

CAPEL ANTIOCH, CRYMYCH

ARCHAEOLOGICAL WATCHING BRIEF

Report No. 2002/80

Report Prepared for:
PEMBROKESHIRE COUNTY COUNCIL

CAMBRIA ARCHAEOLOGY

REPORT NO. 2002/80
PROJECT RECORD NO. 46411

NOVEMBER 2002

CAPEL ANTIOCH, CRYMYCH

By

Hubert Wilson

Cambria Archaeology is the marketing name of the Dyfed Archaeological Trust Limited.

The report has been prepared for the specific use of the client. The Dyfed Archaeological Trust Ltd can accept no responsibility for its use by any other person or persons who may read it or rely on the information it contains.

ARCHAEOLEG CAMBRIA
Ymddiriedolaeth Archaeolegol Dyfed Cyf
Neuadd y Sir, Stryd Caerfyrddin, Llandeilo, Sir Gaerfyrddin SA19 6AF
Ffon: Ymholiadau Cyflfredinol 01558 823121
Adran Rheoli Treftadaeth 01558 823131
Ffacs: 01558 823133
Ebost: cambria@acadat.com Gwefan: www.acadat.com

CAMBRIA ARCHAEOLOGY
Dyfed Archaeological Trust Limited
The Shire Hall, Carmarthen Street, Llandeilo, Carmarthenshire SA19 6AF
Tel: General Enquiries 01558 823121
Heritage Management Section 01558 823131
Fax: 01558 823133
Email: cambria@acadat.com Website: www.acadat.com

The Trust is both a Limited Company (No. 1198990) and a Registered Charity (No. 504616)
CADEIRYDD CHAIRMAN: B.C.BURNHAM, MA PHD FSA MIFA. CYFARWYDDWR DIRECTOR: E G HUGHES BA MIFA

**ARCHAEOLOGICAL WATCHING BRIEF
CAPEL ANTIOCH, CRYMYCH**

CONTENTS	PAGE
Summary	1
1. Introduction	2
2. The site	3
3. Summary of watching brief results	4
Appendix One: Catalogue of watching brief archive	5
Figure One: Location plan of watching brief area	3
Plate 1: The watching brief area after removal of the wall and cutting back	4

SUMMARY

Proposed improvement works by Pembrokeshire County Council on a section of footway adjacent to Capel Antioch, Crymych, were carried out to widen the footway. The works included the removal of the boundary wall of the burial ground for Capel Antioch (NGR SN18153358) and the cutting back of a narrow strip of the burial ground itself. Because of the sensitive nature of the works Pembrokeshire County Council commissioned Cambria Archaeology Field Operations to carry out an archaeological watching brief during the removal of the wall and the cutting back operations.

Other than the chapel boundary wall, which was stone built with a half-round coping, no deposits or features of archaeological interest were noted.

1. INTRODUCTION

1.1 PROJECT COMMISSION

A section of footway adjacent to Capel Antioch, Crymch, was subject to improvement by Pembrokeshire County Council. The works included the removal of the boundary wall of the chapel burial ground and the cutting back of a narrow strip of the burial ground itself. Because of the sensitive nature of the works Pembrokeshire County Council commissioned Cambria Archaeology Field Operations to carry out an archaeological watching brief during the removal of the wall and the cutting back operations.

1.2 SCOPE OF PROJECT

The project was designed to record any features or deposits of archaeological interest exposed during the works.

1.3 REPORT OUTLINE

This report describes the physical environment of the site (Section 2) before summarising the watching brief results and the conclusions (Section 3).

1.4 ABBREVIATIONS

Sites recorded on the county Sites and Monuments Record (SMR) will be identified by their Primary Record Number (PRN) and located by their National Grid Reference (NGR).

Archaeological features and contexts will be referred to using the continuous three-figure numbering system (e.g. 001; 010; 100) employed by Cambria Archaeology Field Operations.

2. THE SITE

2.1 LOCATION

Capel Antioch (PRN 18976) stands close to the centre of Crymych, Pembrokeshire, on the side of the A487 Narberth – Cardigan road at SN18153358. The chapel was constructed in 1845, rebuilt in 1874 and extended in 1927.

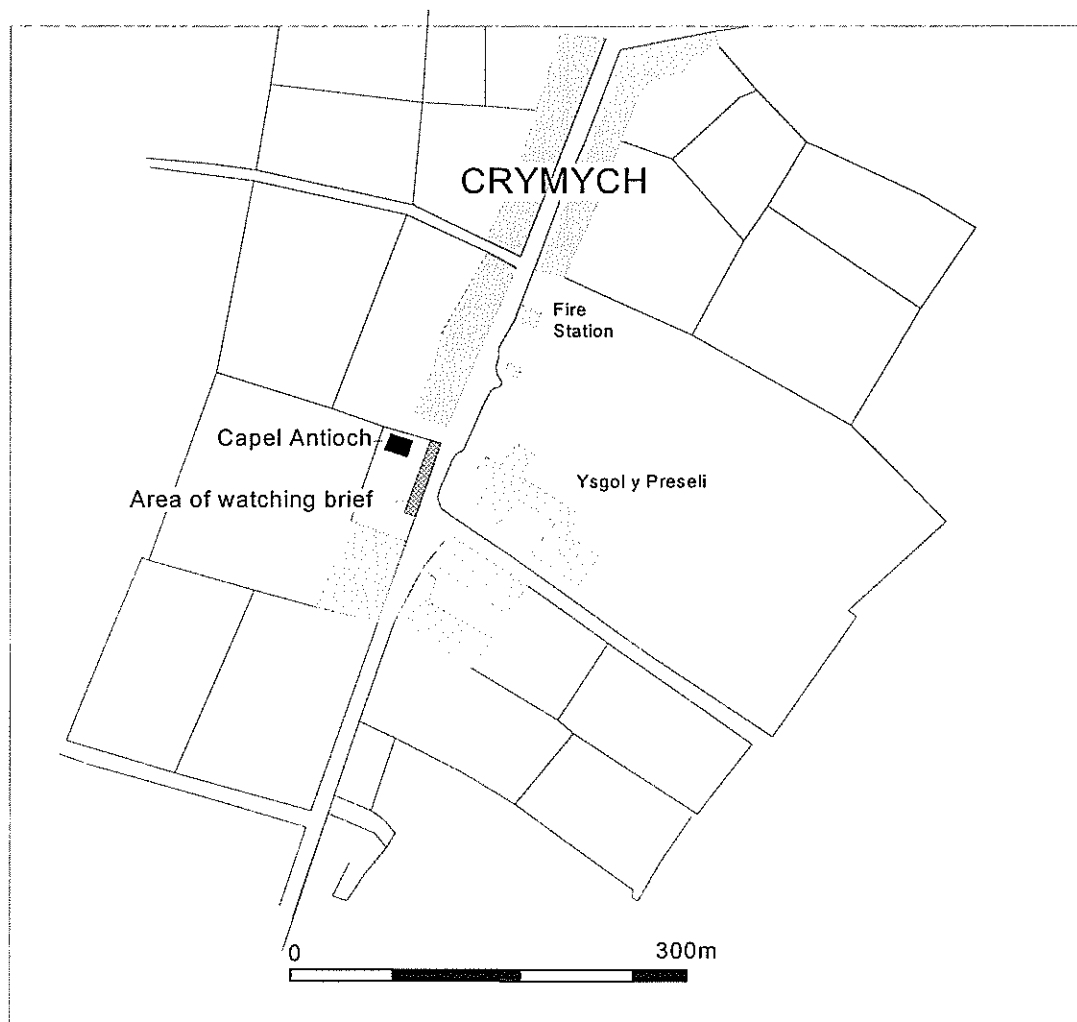


Figure 1: Location plan of watching brief area.

3. SUMMARY OF WATCHING BRIEF RESULTS

3.1 THE CHAPEL BOUNDARY WALL

Prior to demolition the chapel burial ground was bounded along the roadside by a stone wall with a rounded stone coping and a recessed gateway. Square pillars flanked the gateway, which had a metal arch with a central hanging lantern-style light and decorative metal gates.

The wall was removed and no features or deposits of archaeological interest were noted.

3.2 CUTTING BACK INSIDE THE BURIAL GROUND

Following the removal of the wall a short section of the burial ground was cut back, to allow construction of a new wall. It was known from the Trustees of Capel Antioch that it was unlikely that there were burials in the affected section and none were encountered.

The cutting back operations revealed a sequence of topsoil overlying sterile clay, which became shallower from north - south. No archaeological features or deposits were noted.

3.3 CONCLUSIONS

Except for the former chapel boundary wall, no archaeological features or deposits were noted during the footway improvement works.

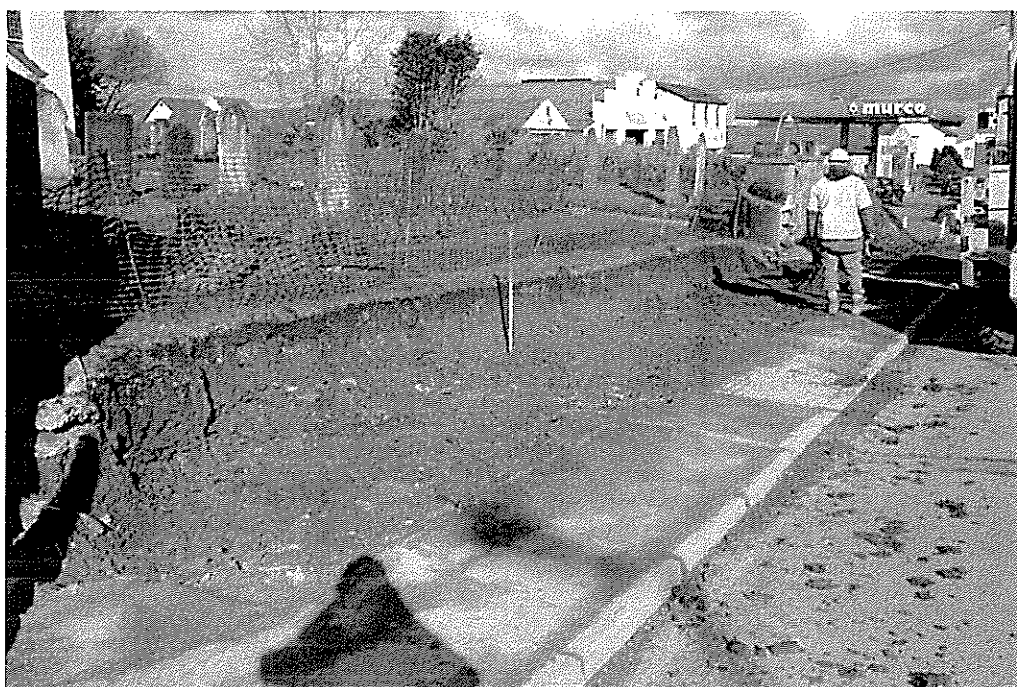


Plate 1: the watching brief area after removal of the wall and cutting back.

APPENDIX ONE: CATALOGUE OF WATCHING BRIEF ARCHIVE

The project archive has been indexed and catalogued according to National Monument Record (NMR) categories and contains the following:

- A.** Copy of final report.
- B.** Site records, including context record sheets and site notebook.
- D.** Site photographs – digital images on disk.
- I.** Archive report and draft copies of final report.
- J.** Publication drawings.
- M.** Miscellaneous correspondence.

There is no material in categories **C, E, F, G, H, K, L** and **N**.

The archive is currently held by Cambria Archaeology Field Operations, Llandeilo, Carmarthenshire as project number 46411.

CAPEL ANTIOCH, CRYMYCH

REPORT NUMBER 2002/80

NOVEMBER 2002

This report has been prepared by Hubert Wilson

Position Archaeologist

Signature Date

This report has been checked and approved by Ken Murphy on behalf of Cambria Archaeology,
Dyfed Archaeological Trust Ltd.

Position Principal Archaeologist Field Operations

Signature Date.....

As part of our desire to provide a quality service we would welcome any comments you may have
on the content or presentation of this report