

PREHISTORIC FUNERARY & RITUAL SITES PROJECT

**YEAR TWO: 2001-02
END OF YEAR INTERIM REPORT**



Report No. 2002/22

Report Prepared for:
CADW



A R C H A E O L O G Y

CAMBRIA

A R C H A E O L O G Y

CAMBRIA ARCHAEOLOGY

REPORT NO. 2002/22
PROJECT RECORD NO. 43600

MARCH 2002

PREHISTORIC FUNERARY & RITUAL SITES PROJECT
Year Two: 2001-02
End of year interim report

By

Nikki Cook

Cambria Archaeology is the marketing name of the Dyfed Archaeological Trust Limited.

The report has been prepared for the specific use of the client. The Dyfed Archaeological Trust Ltd can accept no responsibility for its use by any other person or persons who may read it or rely on the information it contains.

ARCHAEOLEG CAMBRIA
Ymddiriedolaeth Archaeolegol Dyfed Cyf
Neuadd y Sir, Stryd Caerfyrddin, Llandeilo, Sir Gaerfyrddin SA19 6AF
Ffon: Ymholiadau Cyffredinol 01558 823121
Adran Rheoli Treftadaeth 01558 823131
Ffacs: 01558 823133
Epost: cambria@acadat.com Gwefan: www.acadat.com

CAMBRIA ARCHAEOLOGY
Dyfed Archaeological Trust Limited
The Shire Hall, Carmarthen Street, Llandeilo, Carmarthenshire SA19 6AF
Tel: General Enquiries 01558 823121
Heritage Management Section 01558 823131
Fax: 01558 823133
Email: cambria@acadat.com Website: www.acadat.com

The Trust is both a Limited Company (No. 1198990) and a Registered Charity (No. 504616)
CADEIRYDD CHAIRMAN: B.C.BURNHAM, MA PHD FSA MIFA. CYFARWYDDWR DIRECTOR: E G HUGHES BA MIFA

Prehistoric Funerary and Ritual Sites project

END OF YEAR REPORT

March 2002

Introduction

During the first year of the Prehistoric Funerary and Ritual Sites (PFRS) project in 2000-2001 Cambria Archaeology (Dyfed Archaeological Trust) undertook a rapid assessment of the form and condition of known Neolithic and Bronze Age funerary and ritual sites from the area of west Carmarthenshire as extracted from the regional Sites and Monuments Record (SMR). As a result of the fieldwork part of this project a further 23 new sites were identified and added to the SMR, the vast majority of which were round barrows. A number of new hierarchical records were also created (prehistoric monument complexes, round barrow cemeteries, etc.) which further enhance our knowledge of the potential patterns of distribution and association of different types of prehistoric funerary and ritual monuments within this particular region of south-west Wales.

For the second year of this project in 2001-2002 Cambria Archaeology chose to focus on the area of east Carmarthenshire, comprising the Llanelli and Dinefwr districts of the modern political county of Carmarthenshire, as the logical next phase of the PFRS project. The main reason behind this choice was the intention to have completed the project within an entire county area by the end of March 2002, with a view to submitting a publication to a local journal (Carmarthenshire Antiquaries) shortly afterwards.

However, as a result of the outbreak of Foot and Mouth disease, the beginning of the fieldwork phase of the PFRS project in east Carmarthenshire was postponed until October 2001, thereby significantly reducing the amount of time available to fully complete the east Carmarthenshire part of the project during its second year. After the initial desk-based assessment was completed for east Carmarthenshire during the first quarter of the financial year, attention was then focussed on the desk-based assessment for subsequent years of the PFRS project, resulting in the preparation of the Pembrokeshire project database, comprising the south Pembrokeshire and Preseli districts during the second quarter.

As a result, this end of year report is presented in two parts: first, there is a summary of work completed so far in east Carmarthenshire, including a breakdown of figures for sites recorded so far and those yet to be visited, with accompanying distribution maps; *and*, secondly, the preliminary results of the desk-based assessment of the Pembrokeshire database are outlined, with an analysis of the distribution of sites within the south Pembrokeshire and Preseli districts, also with accompanying maps.

Part One: East Carmarthenshire

Methodology and results of the desk-based assessment

The first quarter of the financial year was spent preparing and undertaking the desk-based assessment part of the project for east Carmarthenshire. The SMR was interrogated to produce a project database of all sites which potentially fell into the category of Neolithic and Bronze Age funerary and ritual monuments within the east Carmarthenshire area. Included within this were all sites which have been positively identified as belonging to a known set of monument types relevant to the project (e.g. round barrows, standing stones, etc.) as well as including those sites for which there may be alternative classifications (e.g. barrows which may be clearance cairns, standing stones which may be rubbing stones, etc.). In the initial search those sites recorded from documentary sources and place-name evidence alone were also incorporated into the database, as were both known destroyed sites and those listed as cropmarks or 'other' (e.g. findspots, landforms). The various site types extracted from the regional SMR are listed in Table 1 and largely compare with those drawn from the initial assessment of the west Carmarthenshire area in year 1 of the PFRS project.

Table 1 Site types initially extracted from the SMR for East Carmarthenshire

<u>Site type</u>	<u>total number</u>	<u>no. with SAM status</u>
Barrow cemetery	3	
Barrow cemetery?	3	
Barrow cemetery?;Cairnfield?	1	
Barrow cemetery-linear	1	
Boundary stone?;Standing stone	1	
Burnt mound?;Round barrow?	1	
Cairn	67	
Cairn?	6	
Cairn?;Ring cairn?	1	
Cairnfield	22	
Cairnfield;Mound group	1	
Cairnfield?	1	
Chambered tomb	1	1
Chambered tomb cemetery?;Pillow mound?	1	
Chambered tomb?	4	
Chambered tomb?;Long barrow?	1	1
Chambered tomb?;Round barrow?	1	1
Cist	1	
Cist grave cemetery	2	
Clearance cairn	62	
Clearance cairn;Mound group	1	
Clearance cairn?	20	
Clearance cairn?;Cairn	1	
Clearance cairn?;Round barrow?	1	

continued

<u>Site type</u>	<u>total number</u>	<u>no. with SAM status</u>
Coal quarry?;Round barrow?	1	
Cremation?	1	
Finds*	52	
Henge	1	1 (part)
Henge?;Hillfort?	1	
Hut circle?;Clearance cairn?	1	
Longhouse?;Clearance cairn?	1	
Megalithic structure	1	
Mound	2	
Mound group	2	
Ring barrow	14	3
Ring barrow?	1	
Ring cairn	3	1
Ring cairn?	1	
Round barrow	125	33
Round barrow?	106	3
Round barrow?;Beacon?	1	
Round barrow?;Clearance cairn?	16	
Round barrow?;Motte?	1	
Round barrow?;Ring barrow?	2	
Round barrow?;Shooting hide?	1	
Round barrow?;Spoil tip?	1	
Round barrow?;Standing stone?	1	
Scoop grave	43	
Scoop grave?	27	
Standing stone	31	12
Standing stone;Round barrow?	1	1
Standing stone;Stone pair?	1	1
Standing stone?	91	
Standing stone?;Boundary stone?	3	
Stone circle	4	3
Stone circle?	3	
Stone circle?;Ring barrow?	1	
Stone pair	1	1
Stone pair?	2	
Stone row	1	1
Stone row?	2	1
TOTALS	751	64

* 'Finds' have been included from the initial trawl of the SMR into the east Carmarthenshire database to give an indication of the types of artefacts that are recovered from the area, and to also show the general distribution of this material and how this relates to the distribution patterns of the various types of Neolithic and Bronze Age funerary and ritual monuments. Findspots will not be routinely visited as part of the project unless it is suspected that there may be the remains of a potential monument in situ.

From this initial enquiry, 751 sites were extracted. All of these entries were then assessed both on the basis of the records held on the computerised SMR database and any other paper records held in the offices of Cambria. These paper records included Site Record Forms (SRF), Detailed Record Files (DRF) and other sources of information such as Ordnance Survey record cards, AM107 reports for sites with SAM status and Project reports which included references to prehistoric funerary and ritual sites (e.g. the Forest Enterprise Welsh Historic Assets survey). Where possible, aerial photographs were consulted, as were other bibliographic references.

Following this assessment a refined database was prepared which highlighted 535 sites potentially requiring a visit during the fieldwork phase of the project, primarily based on their recorded form and condition (see Table 2). The sites excluded from this refined database included 20 sites visited in recent years and found to have no surviving, visible archaeological presence (i.e. 'destroyed sites'). The refined database also excluded 133 sites identified on the basis of place-name or documentary evidence alone, 6 sites recorded as 'moved', and 57 sites recorded as findspots (without accompanying monuments) or as 'other' (e.g. landforms). Arranging a site visit to the large number of sites known only from place-name or documentary references was beyond the scope of the project. However, a separately funded project to undertake this exercise might be worthy of consideration in the future.

Table 2 Form/Condition of sites within the project database before fieldwork

SITE TYPE	A	B	C	D	E	U	M	R	Place	Docs	Crop	Other
Barrow cemetery		1	2									
Barrow cemetery?				2							1	
Barrow cemetery?;Cairnfield?		1										
Barrow cemetery-linear		1										
B'dary stone?;Standing stone		1										
Burnt mound?;Round barrow?			1									
Cairn	5	16	7	4		34						1
Cairn?		1				5						
Cairn?;Ring cairn?			1									
Cairnfield	1	14	6									1
Cairnfield;Mound group		1										
Cairnfield?			1									
Chambered tomb		1										
Ch tomb c'tery?;Pillow mound					1							
Chambered tomb?	1	1	1	1								
Ch tomb?;Long barrow?		1										
Ch tomb?;Round barrow?			1									
Cist				1								
Cist grave cemetery										2		
Clearance cairn	11	45	5			1						
Clearance cairn;Mound group		1										
Clearance cairn?	1	4	5			10						
Clearance cairn?;Cairn		1										
Clearance cairn?;Rnd barrow?		1										
Coal quarry?;Round barrow?			1									

continued

SITE TYPE	A	B	C	D	E	U	M	R	Place	Docs	Crop	Other
Cremation?												1 finds
Finds												52 finds
Henge				1								
Henge?;Hillfort?			1									
Hut circle?;Clearance cairn?		1										
Longhouse?;Clearance cairn?			1									
Megalithic structure					1							
Mound			1			1						
Mound group		2										
Ring barrow	1	6	5			2						
Ring barrow?			1									
Ring cairn		3										
Ring cairn?		1										
Round barrow	1	26	41	29	3	22				3		
Round barrow?	2	9	12	17	7	5			47	7		
Round barrow?;Beacon?										1		
Rnd barrow?;Clearance cairn?		8	5	2		1						
Round barrow?;Motte?									1			
Round barrow?;Ring barrow?		1	1									
Rnd barrow?;Shooting hide?				1								
Round barrow?;Spoil tip?		1										
Rnd barrow?;Standing stone?									1			
Scoop grave		42	1									
Scoop grave?		27										
Standing stone	2	14	1		3	2	3	1		5		
Standing stone;Rnd barrow?		1										
Standing stone;Stone pair?	1											
Standing stone?		7	2	1	3	10	3		56	7		2 landform
Standing stone?;B'dary stone?			1		1	1						
Stone circle		2	1	1								
Stone circle?			1							2		
Stone circle?;Ring barrow?						1						
Stone pair												
Stone pair?		1										
Stone row		1										
Stone row?		1								1		
TOTALS	25	245	107	60	20	96	6	1	105	28	1	57

Summary of the code used to record monument condition as used within the SMR:

A	Intact
B	Substantially intact
C	Damaged
D	Substantial destruction
E	Destroyed
M	Moved from original location
R	Restored
U	Unknown

However, a word of caution is needed here. Two groups of site types in particular, which together form a large part of the database, were deemed to require particular evaluation within the fieldwork phase of the project. These are sites listed within the SMR under 'cairn' (73 sites) and 'scoop grave' (70 sites). Very little information exists about these sites: the problem with the sites listed under 'cairn' is that the records fail to identify whether these cairns are sepulchral or agricultural, and there is no accompanying description within the SMR database which may shed any further light. However, there are some paper copies of records belonging to the RCAHMW and permission was sought and granted for the use of this material to inform the PFRS project. These 'cairns' were identified as part of the 'Meithrin Mynydd' projects undertaken by various agencies, and it is hoped that a rapid assessment of these sites, all of which occur within a closely-defined geographical area, may allow for the possibility of discounting a large number of them from the project database, or at least that their geographical concentration will allow for them to be visited reasonably quickly. Conversely, whilst more information exists to a certain extent about the 'scoop graves', inasmuch as each site has a short description, there is much to doubt their authenticity, which again will only be established by fieldwork. Once again, it is fortunate that this group share a particular geographical location (Mynydd Mallaen) and were identified as a result of a survey of the area in 1995: again, it is hoped that after fieldwork it may be possible to discount some or all of them from the project database, and their density and clustering should again allow for the fairly rapid assessment of these monuments. In both cases, these two monument groups are located within remote uplands. The potential removal of both these groups of sites from the project database refines the final figure for the number of sites to be visited from 535 to a more realistic 392. The large number of 'clearance cairns', which also seem to be predominantly recorded as located within these two upland areas, may also allow for the sampling of these sites, and thus a further reduction in the overall number of sites requiring a field visit.

By far the largest represented site type within the project database is that of round barrow and possible round barrows (125 and 106 sites respectively). So far, 36 of these sites are scheduled and it is hoped that many more will be recommended for scheduling once the fieldwork part of the project has been completed. Initial assessment also suggests that pairs of round barrows (as identified during the west Carmarthenshire project) continue to be represented within the east Carmarthenshire area, which may help to lend further weight to the argument that these sites should be considered as a purposefully constructed monument type in its own right. Standing stones are also well represented with 128 possible sites, although only 31 of these are definite sites.

The figures drawn from the initial trawl of the SMR for east Carmarthenshire, as presented in Table 2, encouragingly show a large number of sites falling within the A-C condition, and particularly within the B category (although it should be noted that this figure is distorted by the 'scoop grave' monument type, all but one of which are recorded as substantially intact within the SMR database). This is partly the result of the isolated and/or marginal landscape location of many of the monuments which has no doubt contributed to their preservation. However, it should also be noted that these condition statements are also a reflection of the distinct lack in many cases of any field assessments having been made of these sites since the late 1970s/early 1980s, and it was expected that some of these monuments would have deteriorated since their

last visit. Sixty-four individual monuments enjoy SAM status, and in keeping with the methodology employed last year for the west Carmarthenshire area, it was decided that despite their numerous and more recent assessment, all SAM sites in the east Carmarthenshire area would be visited during the fieldwork phase of the project. Many of these sites are in the same locality as unscheduled sites and their assessment allows a benchmark from which to make management and scheduling recommendations for the other monuments within the study area. A visit to these sites also provides an opportunity to produce an updated report on their form and condition and facilitates the recording of additional information fields for these sites which have been added to the project Site Visit Forms (e.g. topographical siting, viewshed, etc.).

For all sites visited during the fieldwork part of the project the following information is recorded where available: current form, condition, land-use, size, topographical siting, and viewshed (including intervisibility), as well as other observations such as vegetational cover, palaeoenvironmental potential, proximity to other natural landscape features, aspect and associations. National Grid References are checked and details of generic type altered as necessary, based on the glossary of terminology and monument type definitions developed by CPAT and used by Cambria Archaeology within the regional SMR. Photographs are taken as and when appropriate using colour slide, black and white print and digital formats.

The Fieldwork Phase: work so far

The area chosen for this second year of the PFRS project within Cambria Archaeology's region (Carmarthenshire, Ceredigion and Pembrokeshire) was that of east Carmarthenshire (see Figure 1), which corresponds to the former Llanelli and Dinefwr districts. This is a rich and varied landscape, incorporating part of the coast, as well as inland upland areas, characterised by rolling hills and numerous valleys. Large tracts of uninhabited upland, in particular the area of Black Mountain and Mynydd Mallaen, also characterise this area, and yet whilst only forming perhaps one-third of the total area these two upland areas account for approximately two-thirds of the sites requiring evaluation in the field.

In the limited time afforded for fieldwork in the third and fourth quarters of the financial year after the Foot and Mouth outbreak it has been possible to visit and record 153 sites covering roughly geographically two-thirds of the east Carmarthenshire area (see Figure 2). During this time approximately 20 new sites have been identified and recorded, and they are currently in the process of being written up and added to the project database. Of these new sites, there are 13 potential round barrows and 7 possible standing stones.

Table 3 shows the breakdown of site types in terms of their form and condition for the area of east Carmarthenshire for which fieldwork has been completed. These figures are based on the original database extracted from the regional SMR and are currently in the process of being updated. Preliminary findings suggest that for the vast majority of monuments their condition statement remains largely unchanged, which is encouraging in terms of predicting future preservation. Indeed, in the case of at least two sites recorded as 'destroyed' fieldwork revealed a substantial archaeological presence (prns 901 and 902).

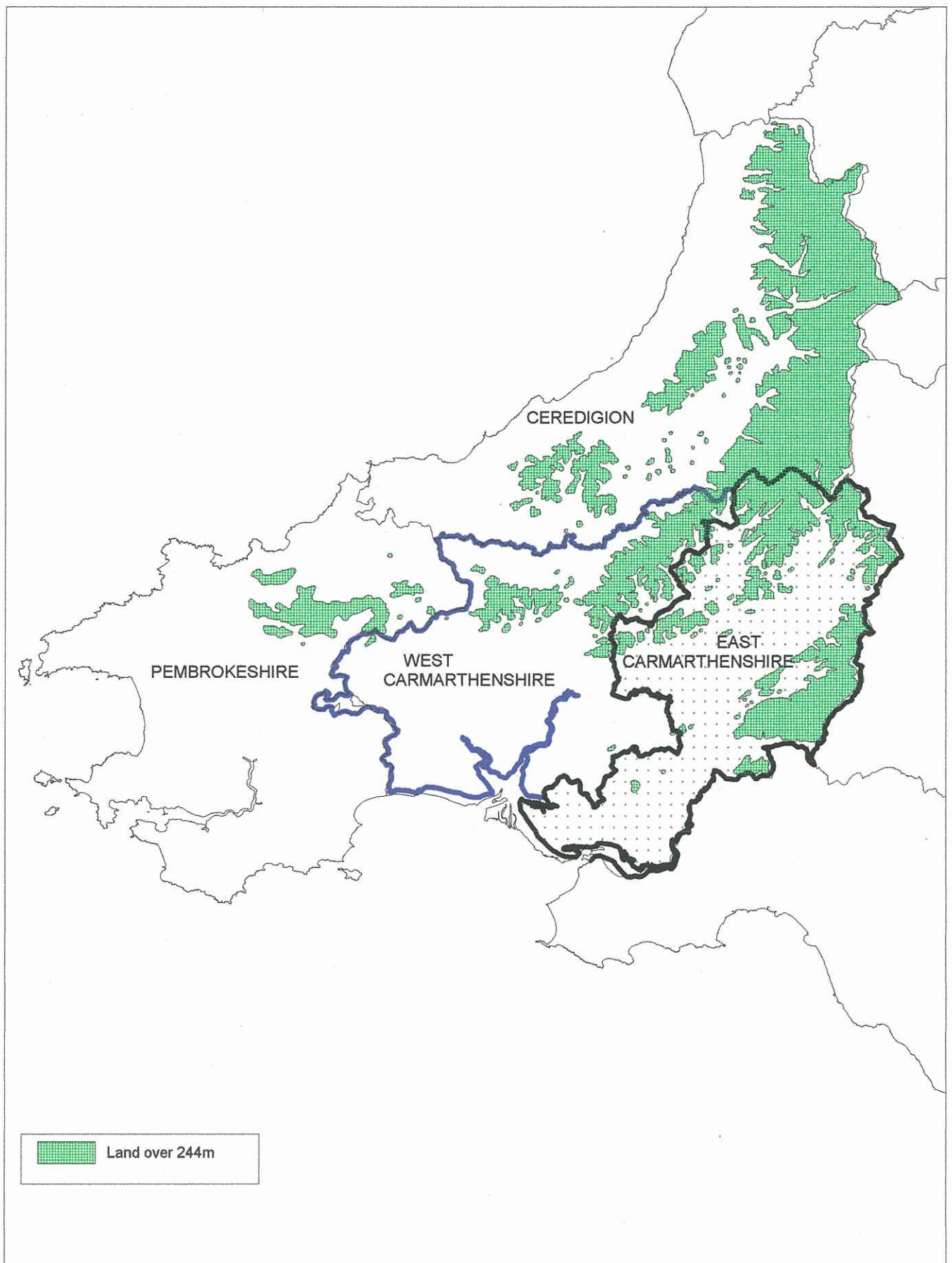


Figure 1 Location of the east Carmarthenshire study area

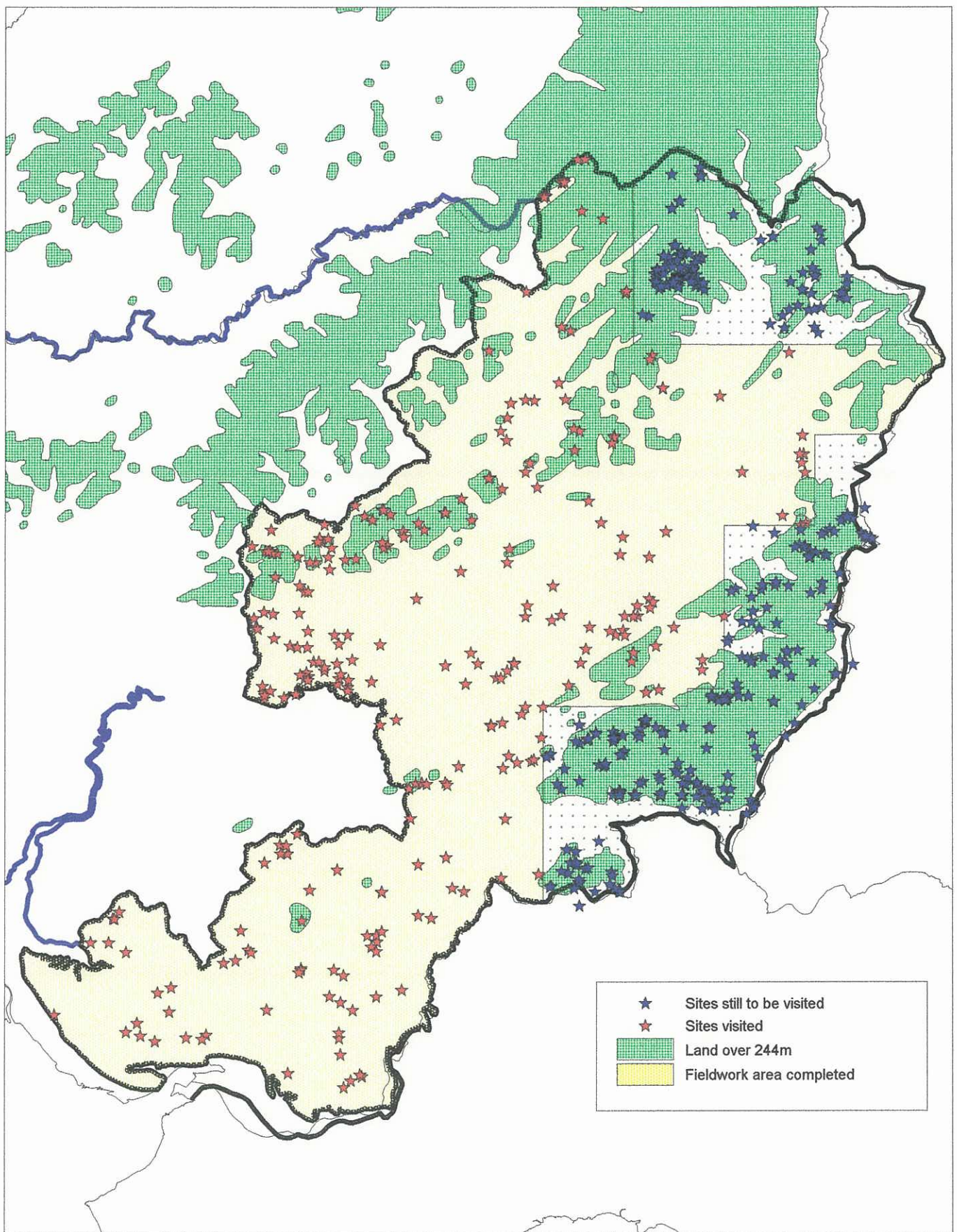


Figure 2 Map showing areas of fieldwork completed in east Carmarthenshire, and those sites visited and yet to be visited

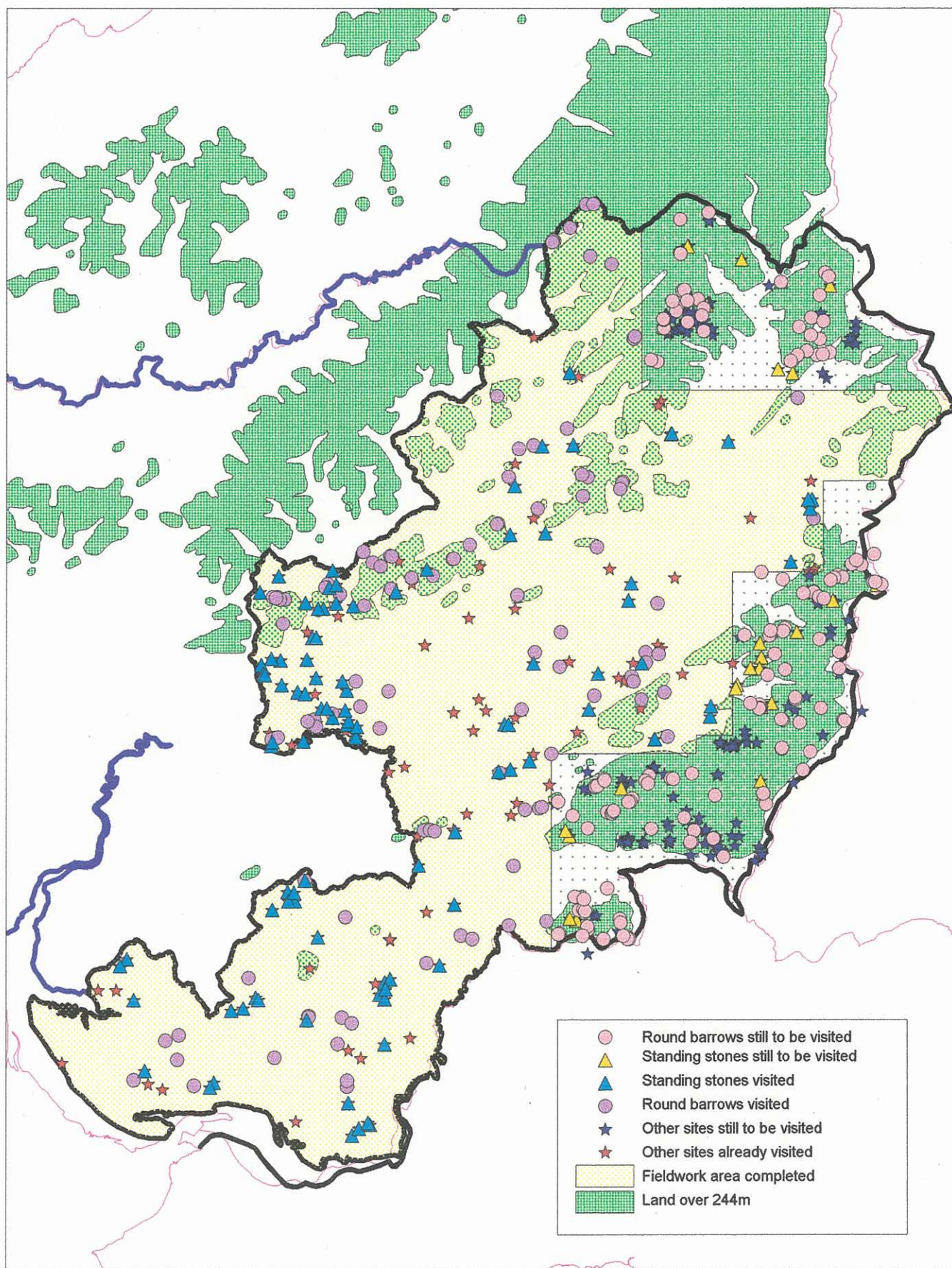


Figure 2a Distribution of round barrows and standing stones in areas visited and yet to be visited

Table 3 Breakdown of sites in ECarms area which have been visited

SITE TYPE	A	B	C	D	E	R	U	Crop	Docs	Total
Barrow cemetery?	0	0	0	0	0	0	0	1	0	1
Barrow cemetery?;Cairnfield?	0	1	0	0	0	0	0	0	0	1
Burnt mound?;Round barrow?	0	0	1	0	0	0	0	0	0	1
Cairn	0	1	2	0	0	0	0	0	0	5
Cairnfield	0	2	1	0	0	0	0	0	0	3
Chambered tomb?	0	1	1	1	1	0	0	0	0	4
Chambered tomb?;Long barrow?	0	1	0	0	0	0	0	0	0	1
Chambered tomb?;Round barrow?	0	0	1	0	0	0	0	0	0	1
Cist	0	0	0	1	0	0	0	0	0	1
Cist grave cemetery	0	0	0	0	0	0	0	0	2	2
Clearance cairn?	0	1	1	0	0	0	0	0	0	2
Clearance cairn?;Round barrow?	0	0	1	0	0	0	0	0	0	1
Coal quarry?;Round barrow?	0	0	1	0	0	0	0	0	0	1
Henge	0	0	0	1	0	0	0	0	0	1
Henge?;Hillfort?	0	0	1	0	0	0	0	0	0	1
Megalithic structure	0	0	0	0	1	0	0	0	0	1
Mound	0	0	1	0	0	0	0	0	0	1
Ring barrow	0	1	2	0	0	0	0	0	0	3
Ring barrow?	0	0	1	0	0	0	0	0	0	1
Ring cairn	0	1	0	0	0	0	0	0	0	1
Round barrow	1	5	6	14	1	0	3	0	1	31
Round barrow?	2	6	7	9	6	0	3	0	3	36
Round barrow?;Beacon?	0	0	0	0	0	0	0	0	1	1
Round barrow?;Clearance cairn?	0	2	1	1	0	0	1	0	0	5
Round barrow?;Standing stone?	0	0	0	0	0	0	0	0	0	1
Standing stone	1	7	0	0	3	1	1	0	4	17
Standing stone;Stone pair?	1	0	0	0	0	0	0	0	0	1
Standing stone?	0	2	0	1	3	0	9	0	7	20
Standing stone?;Boundary stone?	0	0	0	0	1	0	1	0	0	2
Stone circle	0	0	0	1	0	0	0	0	0	1
Stone circle?	0	0	1	0	0	0	0	0	2	3
Stone pair?	0	0	1	0	0	0	1	0	0	2
Stone row?	0	0	0	0	0	0	0	0	1	1
Totals	5	31	30	29	16	1	19	1	21	153

A number of E category ('destroyed') sites as well as some sites recorded from documentary sources alone were visited and recorded as part of the fieldwork conducted so far, accounting for the 153 sites so far completed. This figure does not include the 20 new sites discovered during the course of this fieldwork phase.

Work still to do

The first quarter of the next financial year will be spent completing the fieldwork for the east Carmarthenshire area, which is concentrated in the two distinct areas of Mynydd Mallaen and Black Mountain.

Table 4 reveals the breakdown of the site types and their form/condition for the remaining fieldwork areas.

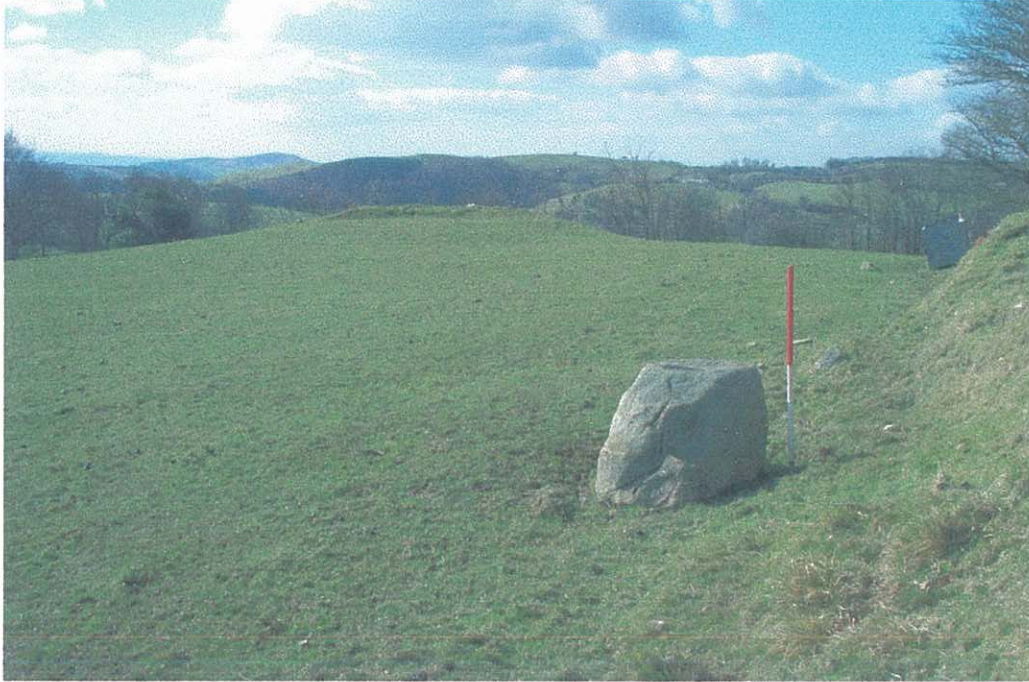
Table 4 Breakdown of sites in ECarms area yet to be visited

SITE TYPE	A	B	C	D	E	M	U	Docs	Finds	Place	Totals
Barrow cemetery	0	1	2	0	0	0	0	0	0	0	3
Barrow cemetery?	0	0	0	2	0	0	0	0	0	0	2
Barrow cemetery-linear	0	1	0	0	0	0	0	0	0	0	1
B'dary stone?;Standing stone	0	1	0	0	0	0	0	0	0	0	1
Cairn	5	15	5	4	0	0	35	0	0	0	64
Cairn?	0	1	0	0	0	0	5	0	0	0	6
Cairn?;Ring cairn?	0	0	1	0	0	0	0	0	0	0	1
Cairnfield	1	12	5	0	0	0	1	0	0	0	19
Cairnfield;Mound group	0	1	0	0	0	0	0	0	0	0	1
Cairnfield?	0	0	1	0	0	0	0	0	0	0	1
Chambered tomb	0	1	0	0	0	0	0	0	0	0	1
Ch tomb cemetery?;Pillow mnd	0	0	0	0	1	0	0	0	0	0	1
Clearance cairn	11	45	5	0	0	0	1	0	0	0	62
Clearance cairn;Mound group	0	1	0	0	0	0	0	0	0	0	1
Clearance cairn?	1	3	4	0	0	0	10	0	0	0	18
Clearance cairn?;Cairn	0	1	0	0	0	0	0	0	0	0	1
Finds	0	0	0	0	0	0	0	0	11	0	11
Hut circle?;Clearance cairn?	0	0	0	1	0	0	0	0	0	0	1
Longhouse?;Clearance cairn?	0	0	1	0	0	0	0	0	0	0	1
Mound	0	0	0	0	0	0	1	0	0	0	1
Mound group	0	2	0	0	0	0	0	0	0	0	2
Ring barrow	1	5	3	0	0	0	2	0	0	0	11
Ring cairn	0	1	0	0	0	0	0	0	0	0	1
Ring cairn?	0	1	0	0	0	0	0	0	0	0	1
Round barrow	0	22	34	15	2	0	19	2	0	0	94
Round barrow?	0	3	5	8	1	0	2	4	0	17	40
Rnd barrow?;Clearance cairn?	0	6	4	1	0	0	0	0	0	0	11
Round barrow?;Motte?	0	0	0	0	0	0	0	0	0	1	1
Round barrow?;Ring barrow?	0	1	1	0	0	0	0	0	0	0	2
Round barrow?;Shooting hide?	0	1	0	0	0	0	0	0	0	0	1
Round barrow?;Spoil tip?	0	1	0	0	0	0	0	0	0	0	1
Scoop grave	0	43	0	0	0	0	0	0	0	0	43
Scoop grave?	0	27	0	0	0	0	0	0	0	0	27
Standing stone	1	7	1	0	0	1	1	1	0	0	12
Standing stone;Round barrow?	0	1	0	0	0	0	0	0	0	0	1
Standing stone?	0	5	2	0	0	0	1	0	0	8	16
Standing stone?;B'dary stone?	0	0	1	0	0	0	0	0	0	0	1
Stone circle	0	2	1	0	0	0	0	0	0	0	3
Stone circle?;Ring barrow?	0	0	0	0	0	0	1	0	0	0	1
Stone pair	0	1	0	0	0	0	0	0	0	0	1
Stone row	0	1	0	0	0	0	0	0	0	0	1
Stone row?	0	1	0	0	0	0	0	0	0	0	1
Totals	20	215	75	31	4	1	79	7	11	26	469

With the possible removal of all the scoop graves from this total, as well as a selection of destroyed sites, finds, place-name sites and those recorded from documentary sources alone, plus a likely significant reduction in the need to visit all the clearance cairns and unspecified 'cairns', it is likely that the total number of sites left to visit could be reduced to something in the region of c.260.

Digital photos of two newly discovered sites in east Carmarthenshire

- 1) Possible standing stone recorded at SN6887834369 Mynydd Llansadwrn looking SW towards the new round barrow (cairn) pictured below



- 2) New round barrow (cairn) recorded at SN6885734352 Mynydd Llansadwrn



Part two: South Pembrokeshire and Preseli

Methodology and results of desk-based assessment

Due to the continued restrictions imposed as a result of the Foot and Mouth crisis after the first quarter of the financial year, which halted the progress of the east Carmarthenshire project, the second quarter of the financial year was spent preparing the desktop assessment for what will eventually be years 3 and 4 of the PFRS project, namely the county of Pembrokeshire. This area is itself divided into two districts: south Pembrokeshire and Preseli, and both areas were initially combined for the preliminary querying of the regional SMR.

Following the methodology used for both the west and east Carmarthenshire projects, the SMR was interrogated to produce a project database for Pembrokeshire as a whole, with the initial enquiry returning a total of 1210 potentially relevant sites. Tables 5, 6 and 7 show a breakdown of these initial figures by site type, condition and form. However, within the initial figure of 1210 sites are included 342 findspots, which can immediately be withdrawn from the total. 'Finds' were included in the initial trawl of the SMR for this area, as indeed they were for east Carmarthenshire, primarily to give an indication of the types of artefacts that are recovered from the area, and to also show the general distribution of this material and how this relates to the distribution patterns of the various types of Neolithic and Bronze Age funerary and ritual monuments. However, these findspots will not be routinely visited as part of the project unless it is suspected that they may indicate the remains of a potential monument *in situ*. On this basis, work began on the desktop assessment of the remaining 868 sites, of which 215 were recorded from place-name evidence alone, and 65 from documentary sources alone. These 280 sites were removed from the total, as were the 4 sites recorded as buried features, the 3 sites recorded as landforms, and the 67 known destroyed sites, thus leaving a final provisional total of 514 sites to be visited during the fieldwork phase of the project.

Within the database there is an encouraging number of monuments currently recorded with an A-C condition, and equally there are also a good proportion of sites with SAM status, including 2 chambered tombs within Cadw's guardianship. However, there is a large proportion of the final database for which no condition statement has been made, or the condition of the monument is unknown (for c.156 sites), and these sites are a priority for visits during the fieldwork phase of the project to fully assess their authenticity as monuments and to record their current condition. The multiple entries in many cases for some of the monument site types extracted from the SMR also prioritises these sites as requiring field visits to affirm their correct site type classification, where this is possible.

In keeping with both the west and east Carmarthenshire project areas, the Pembrokeshire database contains a large number of definite and possible round barrows (305 sites) and standing stones (306), although in Pembrokeshire their numbers are more evenly matched. However, the most notable difference between the Carmarthenshire and Pembrokeshire databases is the much higher number of chambered tombs within the south Pembs/Preseli districts, with 43 definite and 51 possible chambered tomb sites (94), compared with 28 in west Carmarthenshire and only 7 for east Carmarthenshire.

Table 5 Site types initially extracted from the SMR for south Pembs/Preseli

<u>Site type</u>	<u>total number</u>	<u>no. with SAM status</u>
Barrow cemetery	4	2
Barrow cemetery?	3	1
Cairn	10	
Cairnfield	1	
Cairnfield?	1	
Chambered tomb	43	35 (+ 2 GAMs)
Chambered tomb cemetery	2	
Chambered tomb cemetery?	1	
Chambered tomb?	41	4
Chambered tomb?; Megalithic structure?	1	
Chambered tomb?; Standing stone?	6	2
Chambered tomb?; Stone pair?	2	
Chambered tomb?; Unknown	1	
Chapel; Cist grave cemetery	1	1
Cist	2	
Cist grave cemetery	4	
Cist grave cemetery; Church	1	
Cist?	1	
Cist?; Round barrow?	1	
Clearance cairn	29	8
Clearance cairn?	5	
Clearance cairn?; Round barrow?	1	
Cremation	3	
Cremation cemetery	1	
Cremation cemetery?	1	
Cremation cemetery?; Round barrow?	1	
Cremation; Round barrow?	1	
Cremation?	1	
Cremation?; Round barrow?	1	
Cup marked stone	1	
Cursus?	1	
Enclosure?; Henge?	1	
Finds*	342	4
Henge	1	1
Henge?;	2	
Henge?; Vallum enclosure?	1	
Hengiiform monument?	1	1
Inhumation	7	1
Inhumation?	2	
Inhumation-mass?	1	
Megalithic structure	2	
Megalithic structure?	2	
Pit circle	1	1
Ring barrow	5	2

continued

<u>Site type</u>	<u>total number</u>	<u>no. with SAM status</u>
Ring barrow?	6	
Ring barrow?; Enclosed settlement?	2	1
Ring barrow?; Hut circle?	1	
Ring cairn	1	1
Ring cairn?	1	
Ring ditch?; Ring barrow?	2	
Ritual complex	1	
Ritual monument?	1	
Round barrow	150	79
Round barrow reuse	3	1
Round barrow; Standing stone	1	1
Round barrow?	135	1
Round barrow?; Burnt mound?	1	
Round barrow?; Clearance cairn?	2	
Round barrow?; Motte?	4	
Round barrow?; Rabbit warren?	1	
Round barrow?; Ring barrow?	1	
Round barrow?; Round barrow reuse?	1	
Round barrow?; Spoil tip?	3	
Round barrow?; Standing stone?	2	
Round barrow?; Well?	1	
Rubbing stone?; Standing stone?	1	
Scoop grave?; Weapon pit?	2	
Standing stone	82	26
Standing stone; Ritual complex	1	1
Standing stone?	203	1
Standing stone?; Boundary stone?	2	1
Standing stone?; Chambered tomb?	1	1
Standing stone?; Commemorative stone?	1	
Standing stone?; Modern feature	1	
Standing stone?; Navigation marker?	1	
Standing stone?; Rubbing stone?	12	
Standing stone?; Stone pair?	2	
Stone avenue?	1	
Stone circle	4	1
Stone circle?	8	1
Stone circle?; Clearance cairn?	1	
Stone circle?; Field system	1	
Stone circle?; Megalithic structure?	1	1
Stone circle?; Round barrow?	2	1
Stone circle?; Standing stone?	1	
Stone pair	7	6
Stone pair?	3	
Stone pair?; Stone row	1	
Stone pair?; Unknown	1	
Stone row	2	1
Stone row?	7	
Stone row? Field boundary?	1	
TOTALS	1210	190

Table 6 Condition of sites within the project database for S.Pembs/ Preseli before fieldwork

SITE TYPE	A	B	C	D	E	M	None	U	Total
Barrow cemetery	0	1	2	0	0	0	0	1	4
Barrow cemetery?	0	0	1	0	2	0	0	0	3
Cairn	3	0	1	0	0	0	6	0	10
Cairnfield	0	1	0	0	0	0	0	0	1
Cairnfield?	0	0	1	0	0	0	0	0	1
Chambered tomb	0	13	15	8	4	0	3	0	43
Chambered tomb cemetery	0	0	1	0	0	0	1	0	2
Chambered tomb cemetery?	0	0	0	0	0	0	1	0	1
Chambered tomb?	0	4	8	9	6	1	10	3	41
Chambered tomb?; Megalithic structure?	0	1	0	0	0	0	0	0	1
Chambered tomb?; Standing stone?	0	1	1	0	3	0	0	1	6
Chambered tomb?; Stone pair?	0	2	0	0	0	0	0	0	2
Chambered tomb?; Unknown	0	0	0	0	0	0	1	0	1
Chapel; Cist grave cemetery	0	0	0	0	0	0	1	0	1
Cist	0	0	0	0	0	0	2	0	2
Cist grave cemetery	0	0	1	0	0	0	3	0	4
Cist grave cemetery; Church	0	0	0	0	0	0	1	0	1
Cist?	0	0	0	0	0	0	1	0	1
Cist?; Round barrow?	0	0	0	0	0	0	1	0	1
Clearance cairn	2	8	5	1	0	0	5	8	29
Clearance cairn?	0	1	1	0	1	0	0	2	5
Clearance cairn?; Round barrow?	0	1	0	0	0	0	0	0	1
Cremation	0	0	0	1	0	0	2	0	3
Cremation cemetery	0	0	0	0	0	0	1	0	1
Cremation cemetery?	0	0	0	0	0	0	1	0	1
Cremation cemetery?; Round barrow?	0	0	0	0	0	0	1	0	1
Cremation; Round barrow?	0	0	0	0	1	0	0	0	1
Cremation	0	0	0	0	0	0	1	0	1
Cremation?; Round barrow??	0	0	0	0	1	0	0	0	1
Cup marked stone	0	1	0	0	0	0	0	0	1
Cursus?	0	0	0	0	0	0	1	0	1
Enclosure?; Henge	0	0	0	0	0	0	0	1	1
Finds	0	0	0	0	0	1	339	2	342
Henge	0	0	0	1	0	0	0	0	1
Henge?	0	0	1	0	1	0	0	0	2
Henge?; Vallum enclosure	0	0	0	0	0	0	1	0	1
Hengiform monument	0	1	0	0	0	0	0	0	1
Inhumation	0	0	0	0	0	0	7	0	7
Inhumation?	0	0	0	0	0	0	2	0	2
Inhumation-mass?	0	0	0	0	0	0	1	0	1
Megalithic structure	0	0	0	0	0	0	1	1	2
Megalithic structure?	0	0	0	1	0	0	1	0	2
Pit circle	0	0	0	0	0	0	1	0	1
Ring barrow	0	1	1	0	0	0	0	3	5
Ring barrow?	0	2	1	2	0	0	1	0	6
Ring barrow?; Enclosed settlement?	0	1	1	0	0	0	0	0	2
Ring barrow?; Hut circle	0	0	0	0	0	0	1	0	1
Ring cairn	0	0	1	0	0	0	0	0	1
Ring cairn?	0	0	0	0	0	0	1	0	1
Ring ditch?; Ring barrow?	0	2	0	0	0	0	0	0	2
Ritual complex	0	1	0	0	0	0	0	0	1

continued

SITE TYPE	A	B	C	D	E	M	None	U	Total
Ritual monument?	0	0	0	1	0	0	0	0	1
Round barrow	1	30	58	26	19	0	8	8	150
Round barrow reuse	0	0	1	0	0	0	1	1	3
Round barrow; Standing stone	0	0	0	1	0	0	0	0	1
Round barrow?	0	4	16	12	3	0	82	18	135
Round barrow?; Burnt mound?	0	0	0	0	1	0	0	0	1
Round barrow? Clearance cairn?	0	0	0	0	0	0	0	2	2
Round barrow?; Motte?	0	0	1	0	0	0	3	0	4
Round barrow?; Rabbit warren?	0	0	0	0	0	0	1	0	1
Round barrow?; Ring barrow?	0	0	0	0	0	0	0	1	1
Round barrow?; Round barrow reuse?	0	0	0	0	1	0	0	0	1
Round barrow?; Spoil tip?	0	1	0	1	0	0	0	1	3
Round barrow?; Standing stone?	0	0	0	0	2	0	0	0	2
Round barrow?; Well?	0	1	0	0	0	0	0	0	1
Rubbing stone?; Standing stone?	0	0	0	0	0	0	1	0	1
Scoop grave?; Weapon pit?	0	1	1	0	0	0	0	0	2
Standing stone	9	38	4	1	8	6	12	4	82
Standing stone; Ritual complex	0	1	0	0	0	0	0	0	1
Standing stone	10	15	3	2	10	3	148	12	203
Standing stone?; Boundary stone?	1	0	0	0	0	0	0	1	2
Standing stone?; Chambered tomb?	0	1	0	0	0	0	0	0	1
Standing stone?; Commemorative stone?	0	1	0	0	0	0	0	0	1
Standing stone?; Modern feature	0	0	0	0	0	0	1	0	1
Standing stone?; Navigation marker?	0	0	0	0	0	0	0	1	1
Standing stone?; Rubbing stone?	0	1	0	0	0	1	0	10	12
Standing stone?; Stone pair?	0	0	0	0	0	0	2	0	2
Stone avenue?	0	0	0	0	0	0	0	1	1
Stone circle	0	1	0	0	0	0	3	0	4
Stone circle?	0	0	0	3	1	0	3	1	8
Stone circle?; Clearance cairn?	0	1	0	0	0	0	0	0	1
Stone circle?; Field system	0	0	0	0	0	0	0	1	1
Stone circle?; Megalithic structure	0	1	0	0	0	0	0	0	1
Stone circle?; Round barrow?	0	0	0	2	0	0	0	0	2
Stone circle?; Standing stone?	0	0	0	0	0	0	1	0	1
Stone pair	1	4	2	0	0	0	0	0	7
Stone pair?	0	2	0	0	1	0	0	0	3
Stone pair?; Stone row?	0	0	1	0	0	0	0	0	1
Stone pair?; Unknown	0	1	0	0	0	0	0	0	1
Stone row	0	0	1	0	0	0	0	1	2
Stone row?	0	1	1	0	2	0	2	1	7
Stone row?; Field boundary?	0	0	0	0	0	0	0	1	1
Total	27	147	131	72	67	12	667	87	1210

Summary of the code used to record monument condition as used within the SMR:

A	Intact
B	Substantially intact
C	Damaged
D	Substantial destruction
E	Destroyed
M	Moved from original location
R	Restored
U	Unknown

Table 7 Recorded form of monuments in south Pembs/Preseli before fieldwork

TYPE / FORM	Buildi ng	Buried feature	Crop mark	Docs	Docs; E/work	Docs; P/name	Docs?	E/work	Finds	Land form	Landform / E/work	None	O.Struct	Place- name	P/name; Docs	P/name; E/work	TOTAL
Barrow cemetery	0	0	0	0	1	0	0	3	0	0	0	0	0	0	0	0	4
Barrow cemetery?	0	0	0	0	0	0	0	3	0	0	0	0	0	0	0	0	3
Cairn	0	0	0	0	0	0	0	3	0	0	0	6	1	0	0	0	10
Cairnfield	0	0	0	0	0	0	0	1	0	0	0	0	0	0	0	0	1
Cairnfield?	0	0	0	0	0	0	0	1	0	0	0	0	0	0	0	0	1
Chambered tomb	0	0	0	1	0	0	0	8	0	0	0	0	34	0	0	0	43
Chambered tomb cemetery	0	0	0	1	0	0	0	0	0	0	0	0	1	0	0	0	2
Chambered tomb cemetery?	0	0	0	1	0	0	0	0	0	0	0	0	0	0	0	0	1
Chambered tomb?	0	0	0	9	0	0	0	4	0	0	0	0	27	1	0	0	41
Ch tomb?; Meg structure?	0	0	0	0	0	0	0	0	0	0	0	0	1	0	0	0	1
Ch tomb?; Standing stone?	0	0	0	0	0	0	0	0	0	0	0	0	6	0	0	0	6
Ch tomb?; Stone pair?	0	0	0	0	0	0	0	0	0	0	0	0	2	0	0	0	2
Ch tomb?; Unknown	0	0	0	0	0	0	0	0	0	0	0	0	0	1	0	0	1
Chapel; Cist grave cemetery	0	0	0	1	0	0	0	0	0	0	0	0	0	0	0	0	1
Cist	0	0	0	0	0	0	0	0	0	0	0	2	0	0	0	0	2
Cist grave cemetery	0	2	0	2	0	0	0	0	0	0	0	0	0	0	0	0	4
Cist grave cemetery; Church	0	0	0	1	0	0	0	0	0	0	0	0	0	0	0	0	1
Cist?	0	0	0	1	0	0	0	0	0	0	0	0	0	0	0	0	1
Cist?; Round barrow	0	0	0	1	0	0	0	0	0	0	0	0	0	0	0	0	1
Clearance cairn	0	0	0	0	0	0	0	23	0	0	0	5	1	0	0	0	29
Clearance cairn?	0	0	0	0	0	0	0	1	0	0	0	0	4	0	0	0	5
Clearance cairn?; Rnd barrow?	0	0	0	0	0	0	0	1	0	0	0	0	0	0	0	0	1
Cremation	0	1	0	0	0	0	0	0	1	0	0	0	1	0	0	0	3
Cremation cemetery	0	0	0	0	0	0	0	0	1	0	0	0	0	0	0	0	1
Cremation cemetery?	0	0	0	0	0	0	0	0	1	0	0	0	0	0	0	0	1
Cremation cemetery; Rbarrow?	0	0	0	0	0	0	0	0	1	0	0	0	0	0	0	0	1
Cremation; Round barrow	0	0	0	0	0	0	0	1	0	0	0	0	0	0	0	0	1
Cremation?	0	0	0	0	0	0	0	0	1	0	0	0	0	0	0	0	1
Cremation?; Round barrow?	0	0	0	0	0	0	0	0	0	0	0	0	1	0	0	0	1
Cup marked stone	0	0	0	0	0	0	0	0	0	0	0	0	1	0	0	0	1

TYPE / FORM	Buildi ng	Buried feature	Crop mark	Docs	Docs; E/work	Docs; P/name	Docs?	E/work	Finds	Land form	Landform / E/work	None	O.Struct	Place- name	P/name; Docs	P/name; E/work	TOTAL
Cursus?	0	0	1	0	0	0	0	0	0	0	0	0	0	0	0	0	1
Enclosure?; Henge?	0	0	1	0	0	0	0	0	0	0	0	0	0	0	0	0	1
Finds	0	0	0	2	0	0	0	0	339	0	0	1	0	0	0	0	342
Henge	0	0	0	0	0	0	0	1	0	0	0	0	0	0	0	0	1
Henge?	0	0	0	0	0	0	0	2	0	0	0	0	0	0	0	0	2
Henge?; Vallum enclosure?	0	0	1	0	0	0	0	0	0	0	0	0	0	0	0	0	1
Hengiform monument?	0	0	0	0	0	0	0	1	0	0	0	0	0	0	0	0	1
Inhumation	0	1	0	1	0	0	1	0	3	0	0	1	0	0	0	0	7
Inhumation?	0	0	0	0	0	0	0	0	2	0	0	0	0	0	0	0	2
Inhumation-mass	0	0	0	1	0	0	0	0	0	0	0	0	0	0	0	0	1
Megalithic structure	0	0	0	1	0	0	0	0	0	0	0	0	1	0	0	0	2
Megalithic structure?	0	0	0	1	0	0	0	0	0	0	0	0	1	0	0	0	2
Pit circle	0	0	1	0	0	0	0	0	0	0	0	0	0	0	0	0	1
Ring barrow	0	0	1	0	0	0	0	4	0	0	0	0	0	0	0	0	5
Ring barrow?	0	0	1	0	1	0	0	4	0	0	0	0	0	0	0	0	6
Ring barrow? Encl'd settlement	0	0	0	0	0	0	0	2	0	0	0	0	0	0	0	0	2
Ring barrow?; Hut circle	1	0	0	0	0	0	0	0	0	0	0	0	0	0	0	0	1
Ring cairn	0	0	0	0	0	0	0	1	0	0	0	0	0	0	0	0	1
Ring cairn?	0	0	1	0	0	0	0	0	0	0	0	0	0	0	0	0	1
Ring ditch?; Ring barrow?	0	0	2	0	0	0	0	0	0	0	0	0	0	0	0	0	2
Ritual complex	0	0	1	0	0	0	0	0	0	0	0	0	0	0	0	0	1
Ritual monument?	0	0	0	0	0	0	0	0	0	0	0	0	1	0	0	0	1
Round barrow	0	0	2	6	0	0	0	141	0	0	0	0	1	0	0	0	150
Round barrow reuse	0	0	0	0	0	0	0	2	1	0	0	0	0	0	0	0	3
Round barrow; Standing stone	0	0	0	0	0	0	0	1	0	0	0	0	0	0	0	0	1
Round barrow?	0	0	1	11	0	0	0	48	1	0	1	0	2	70	0	1	135
Round barrow?; Burnt mound?	0	0	0	0	0	0	0	1	0	0	0	0	0	0	0	0	1
Rnd barrow?; Clearance cairn?	0	0	0	0	0	0	0	2	0	0	0	0	0	0	0	0	2
Round barrow?; Motte?	0	0	0	0	0	0	0	1	0	0	0	0	0	3	0	0	4
Round barrow?; Rabbit warren	0	0	0	0	0	0	0	0	0	0	0	0	0	1	0	0	1
Round barrow?; Ring barrow?	0	0	0	0	0	0	0	1	0	0	0	0	0	0	0	0	1
Rnd barrow?; Rd barrow reuse	0	0	0	0	0	0	0	1	0	0	0	0	0	0	0	0	1
Round barrow?; Spoil tip?	0	0	0	0	0	0	0	3	0	0	0	0	0	0	0	0	3

TYPE / FORM	Buildi ng	Buried feature	Crop mark	Docs	Docs; E/work	Docs; P/name	Docs?	E/work	Finds	Land form	Landform / E/work	None	O.Struct	Place- name	P/name; Docs	P/name; E/work	TOTAL
Rnd barrow?; Standing stone?	0	0	0	0	0	0	0	2	0	0	0	0	0	0	0	0	2
Round barrow?; Well?	0	0	0	0	0	0	0	0	0	0	0	0	1	0	0	0	1
Rubbing stone?; St stone?	0	0	0	1	0	0	0	0	0	0	0	0	0	0	0	0	1
Scoop grave?; Weapon pit?	0	0	0	0	0	0	0	2	0	0	0	0	0	0	0	0	2
Standing stone	0	0	0	6	0	1	0	0	0	0	0	5	70	0	0	0	82
Standing stone;Ritual complex	0	0	0	0	0	0	0	0	0	0	0	0	1	0	0	0	1
Standing stone?	1	0	0	9	0	1	0	0	0	2	0	1	54	134	1	0	203
St stone?; Boundary stone?	0	0	0	0	0	0	0	0	0	0	0	0	2	0	0	0	2
St stone?; Chambered tomb?	0	0	0	0	0	0	0	0	0	0	0	0	1	0	0	0	1
St stone?; Commemorative st	0	0	0	0	0	0	0	0	0	0	0	0	1	0	0	0	1
St stone?; Modern feature	0	0	0	0	0	0	0	0	0	0	0	0	1	0	0	0	1
St Stone?; Navigation marker?	0	0	0	1	0	0	0	0	0	0	0	0	0	0	0	0	1
ST stone?; Rubbing stone?	0	0	0	0	0	0	0	0	0	0	0	0	12	0	0	0	12
Standing stone?; Stone pair?	0	0	0	0	0	0	0	0	0	0	0	0	0	2	0	0	2
Stone avenue?	0	0	0	0	0	0	0	0	0	0	0	0	1	0	0	0	1
Stone circle	0	0	0	3	0	0	0	0	0	0	0	0	1	0	0	0	4
Stone circle?	0	0	0	3	0	0	0	0	0	0	0	0	5	0	0	0	8
Stone circle?; Clearance cairn?	0	0	0	0	0	0	0	0	0	0	0	0	1	0	0	0	1
Stone circle?; Field system	0	0	0	0	0	0	0	0	0	0	0	0	1	0	0	0	1
Stone circle?; Meg structure?	0	0	0	0	0	0	0	0	0	0	0	0	1	0	0	0	1
Stone circle?; Round barrow?	0	0	0	0	0	0	0	2	0	0	0	0	0	0	0	0	2
Stone circle?; Standing stone?	0	0	0	0	0	0	0	0	0	0	0	0	0	1	0	0	1
Stone pair	0	0	0	0	0	0	0	0	0	0	0	0	7	0	0	0	7
Stone pair?	0	0	0	0	0	0	0	0	0	0	0	0	3	0	0	0	3
Stone pair?; Stone row?	0	0	0	0	0	0	0	0	0	0	0	0	1	0	0	0	1
Stone pair?; Unknown	0	0	0	0	0	0	0	0	0	0	0	0	1	0	0	0	1
Stone row	0	0	0	0	0	0	0	0	0	0	0	0	2	0	0	0	2
Stone row?	0	0	0	0	0	0	0	0	0	0	0	0	5	2	0	0	7
Stone row?; Field boundary?	0	0	0	0	0	0	0	0	0	0	0	0	1	0	0	0	1
TOTAL	2	4	13	64	2	2	1	271	351	2	1	21	259	215	1	1	1210

Proposed schedule of work for 2002-2003

In terms of managing the PFRS for the coming year 2002-2003, it is proposed that after the first part of the financial year is spent completing the fieldwork for the east Carmarthenshire area (including the writing of the report), the remainder of the year is then spent concentrating on the south Pembrokeshire area, with the aim of producing a final report for SPembs by the end of March 2003. Year 4 of the project will then continue with the county of Pembrokeshire completing the fieldwork and reporting in the larger Preseli district by March 2004.

The breakdown of figures for the south Pembrokeshire and Preseli districts are detailed in tables 8 and 9, and their respective distributions illustrated on Figure 3.

Table 8 Breakdown of sites by condition/form for south Pembrokeshire

SITE TYPE	A	B	C	D	E	M	U	Crop	Docs	Finds	Place	Total
Barrow cemetery	0	0	1	0	0	0	1	0	0	0	0	2
Barrow cemetery?	0	0	0	0	1	0	0	0	0	0	0	1
Chambered tomb	0	2	3	0	0	0	0	0	0	0	0	5
Chambered tomb?	0	0	1	2	3	0	1	0	0	0	0	7
Chambered tomb cemetery	0	0	1	0	0	0	0	0	0	0	0	1
Chambered tomb cemetery?	0	0	0	0	0	0	0	0	1	0	0	1
Cist grave cemetery	0	0	1	0	0	0	0	0	0	0	0	1
Clearance cairn?	0	0	1	0	0	0	0	0	0	0	0	1
Cremation cemetery?	0	0	0	0	0	0	0	0	0	1	0	1
Cup marked stone	0	1	0	0	0	0	0	0	0	0	0	1
Finds	0	0	0	0	0	0	0	0	1	125	0	126
Henge?	0	0	0	0	0	0	0	0	0	0	0	0
Inhumation	0	0	0	0	0	0	2	0	1	2	0	5
Inhumation?	0	0	0	0	0	0	0	0	0	2	0	2
Inhumation-mass?	0	0	0	0	0	0	0	0	1	0	0	1
Ring barrow	0	0	0	0	0	0	2	0	0	0	0	2
Ring barrow?	0	0	0	0	0	0	1	0	0	0	0	1
Ring cairn?	0	0	0	0	0	0	0	1	0	0	0	1
Round barrow	0	15	17	7	4	0	6	0	2	0	0	51
Round barrow reuse	0	0	1	0	0	0	0	0	0	1	0	2
Round barrow?	0	0	6	5	1	0	9	0	2	0	7	30
Round barrow?; Spoil tip?	0	0	0	1	0	0	0	0	0	0	0	1
Rubbing stone?; St. stone?	0	0	0	0	0	0	0	0	1	0	0	1
Standing stone	1	4	0	0	3	2	2	0	0	0	0	12
Standing stone?	0	1	0	2	0	0	4	0	0	0	24	31
St stone?; Navigation marker?	0	0	0	0	0	0	0	0	1	0	0	1
St stone?; Rubbing stone?	0	0	0	0	0	0	1	0	0	0	0	1
Stone circle?	0	0	0	0	1	0	0	0	0	0	0	1
Totals	1	23	32	17	13	2	29	1	10	131	31	290

As can be seen from the above table, the number of sites to be visited in the south Pembrokeshire area totals 159, after 'finds' have been removed. However, this number includes a provision for visiting all place-name sites, sites noted from documentary sources and those currently recorded as 'destroyed', but if these too are removed from the database, the number of sites to be visited could be reduced to 105.

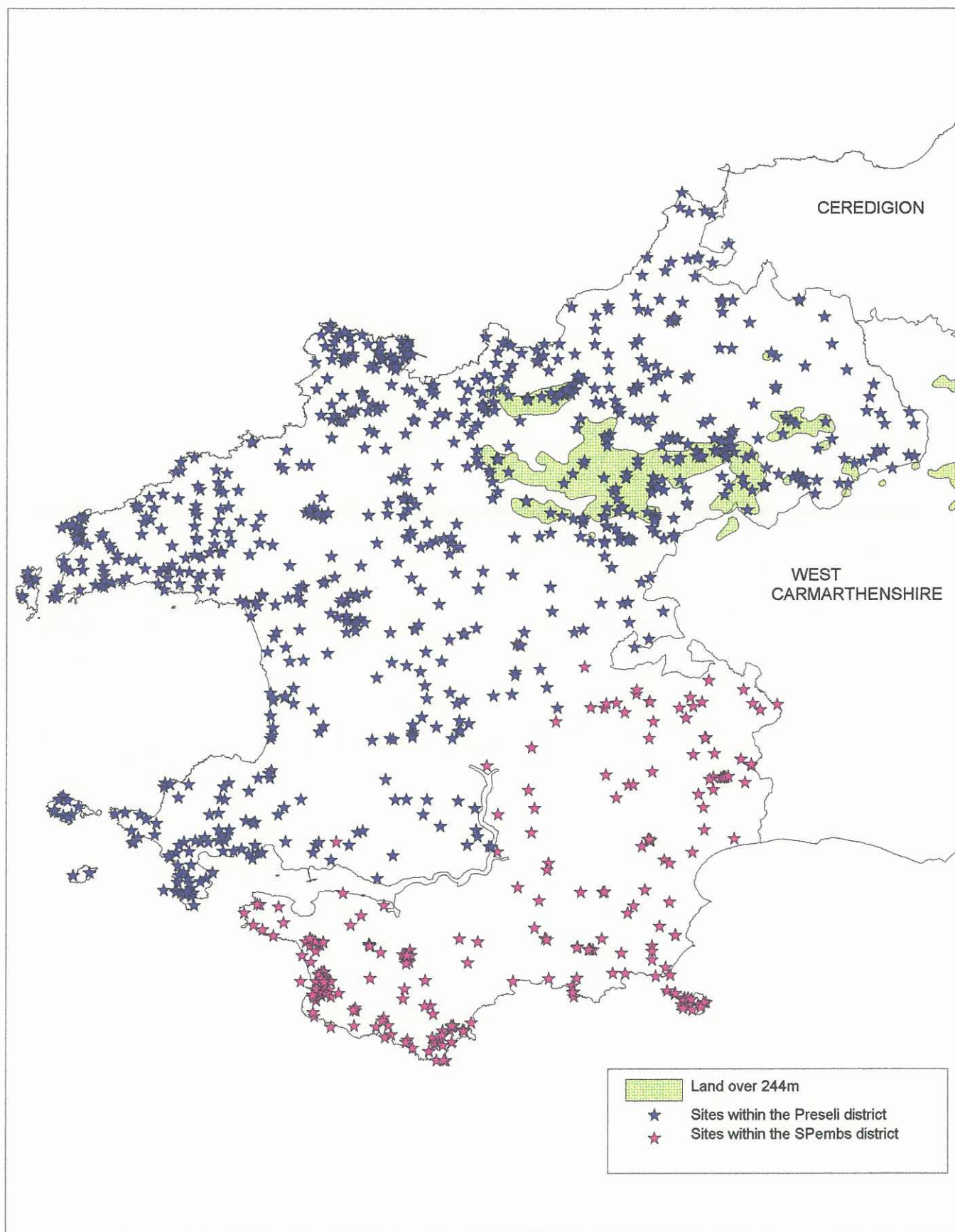


Figure 3 Map demonstrating the respective distributions of sites in the two Pembrokeshire districts of S Pembs & Preseli

Table 9 Breakdown of sites by condition/form for the Preseli district of Pembrokeshire

SITE TYPE	A	B	C	D	E	M	U	Crop	Docs	Other	Place	Total
Barrow cemetery	0	1	0	0	0	0	0	0	1	0	0	2
Barrow cemetery?	0	0	1	0	1	0	0	0	0	0	0	2
Cairn	3	0	1	0	0	0	6	0	0	0	0	10
Cairnfield	0	1	0	0	0	0	0	0	0	0	0	1
Cairnfield?	0	0	1	0	0	0	0	0	0	0	0	1
Chambered tomb	0	11	12	8	4	0	2	0	1	0	0	38
Chambered tomb cemetery	0	0	0	0	0	0	0	0	1	0	0	1
Chambered tomb?	0	4	7	7	3	1	2	0	9	0	1	34
Ch tomb?;Megalithic structure	0	1	0	0	0	0	0	0	0	0	0	1
Ch tomb?;Standing stone?	0	1	1	0	3	0	1	0	0	0	0	6
Ch tomb?;Stone pair?	0	2	0	0	0	0	0	0	0	0	0	2
Ch tomb?;Unknown	0	0	0	0	0	0	0	0	0	0	1	1
Chapel;Cist grave cemetery	0	0	0	0	0	0	0	0	1	0	0	1
Cist	0	0	0	0	0	0	2	0	0	0	0	2
Cist grave cemetery	0	0	0	0	0	0	1	0	2	0	0	3
Cist grave cemetery;Church	0	0	0	0	0	0	0	0	1	0	0	1
Cist?	0	0	0	0	0	0	0	0	1	0	0	1
Cist?;Round barrow?	0	0	0	0	0	0	0	0	1	0	0	1
Clearance cairn	2	8	5	1	0	0	13	0	0	0	0	29
Clearance cairn?	0	1	0	0	1	0	2	0	0	0	0	4
Clearance cairn?;Round barrow?	0	1	0	0	0	0	0	0	0	0	0	1
Cremation	0	0	0	1	0	0	1	0	0	1 finds	0	3
Cremation cemetery	0	0	0	0	0	0	0	0	0	1 finds	0	1
Crem cemetery?;Rnd barrow?	0	0	0	0	0	0	0	0	0	1	0	1
Cremation;Round barrow?	0	0	0	0	1	0	0	0	0	0	0	1
Cremation?	0	0	0	0	0	0	0	0	0	1 finds	0	1
Cremaation?;Round barrow?	0	0	0	0	1	0	0	0	0	0	0	1
Cursus?	0	0	0	0	0	0	0	1	0	0	0	1
Enclosure;Henge?	0	0	0	0	0	0	0	1	0	0	0	1
Finds	0	0	0	0	0	0	0	0	1	219 finds	0	220
Henge	0	0	0	1	0	0	0	0	0	0	0	1
Henge?	0	0	1	0	0	0	0	0	0	0	0	1
Henge?;Vallum enclosure?	0	0	0	0	0	0	0	1	0	0	0	1
Hengiform monument?	0	1	0	0	0	0	0	0	0	0	0	1
Inhumation	0	0	0	0	0	0	0	0	1	1	0	2
Megalithic structure	0	0	0	0	0	0	1	0	1	0	0	2
Megalithic structure?	0	0	0	1	0	0	0	0	1	0	0	2
Pit circle	0	0	0	0	0	0	0	1	0	0	0	1
Ring barrow	0	1	1	0	0	0	1	0	0	0	0	3
Ring barrow?	0	1	1	1	0	0	0	1	1	0	0	5
Ring barrow?;Encl settlement?	0	1	1	0	0	0	0	0	0	0	0	2
Ring barrow?;Hut circle	0	0	0	0	0	0	1	0	0	0	0	1
Ring cairn	0	0	1	0	0	0	0	0	0	0	0	1
Ring ditch?;Ring barrow?	0	0	0	0	0	0	0	2	0	0	0	2
Ritual complex	0	0	0	0	0	0	0	1	0	0	0	1
Ritual monument?	0	0	0	1	0	0	0	0	0	0	0	1
Round barrow	1	14	41	19	15	0	3	1	4	0	0	98
Round barrow reuse	0	0	0	0	0	0	1	0	0	0	0	1
Round barrow;Standing stone	0	0	0	1	0	0	0	0	0	0	0	1
Round barrow?	0	4	10	6	2	0	8	1	9	1 finds	64	105
Round barrow?;Burnt mound?	0	0	0	0	1	0	0	0	0	0	0	1
Round barrow?;Clearance cairn?	0	0	0	0	0	0	2	0	0	0	0	2
Round barrow?;Motte?	0	0	1	0	0	0	0	0	0	0	3	4
Round barrow?;Rabbit warren?	0	0	0	0	0	0	0	0	0	0	1	1
Round barrow?;Ring barrow?	0	0	0	0	0	0	1	0	0	0	0	1
Rnd barrow?;Rnd barrow reuse?	0	0	0	0	1	0	0	0	0	0	0	1
Round barrow?;Spoil tip?	0	1	0	0	0	0	1	0	0	0	0	2

continued

SITE TYPE	A	B	C	D	E	M	U	Crop	Docs	Other	Place	Totals
Round barrow?;St stone?	0	0	0	0	2	0	0	0	0	0	0	2
Round barrow?;Well?	0	1	0	0	0	0	0	0	0	0	0	1
Scoop grave?;Weapon pit?	0	1	1	0	0	0	0	0	0	0	0	2
Standing stone	8	34	4	1	5	4	7	0	7	0	0	70
Standing stone;Ritual complex	0	1	0	0	0	0	0	0	0	0	0	1
Standing stone?	10	14	3	0	10	3	9	0	10	2 landform	111	172
Standing stone?;B'dary stone?	1	0	0	0	0	0	1	0	0	0	0	2
Standing stone?;Ch'd tomb?	0	1	0	0	0	0	0	0	0	0	0	1
St stone?;Commemorative stone?	0	1	0	0	0	0	0	0	0	0	0	1
Standing stone?;Modern feature	0	0	0	0	0	0	1	0	0	0	0	1
Standing stone?;Rubbing stone	0	1	0	0	0	1	9	0	0	0	0	11
Standing stone?;Stone pair?	0	0	0	0	0	0	0	0	0	0	2	2
Stone avenue?	0	0	0	0	0	0	1	0	0	0	0	1
Stone circle	0	1	0	0	0	0	0	0	3	0	0	4
Stone circle?	0	0	0	3	0	0	1	0	3	0	0	7
Stone circle?;Clearance cairn?	0	1	0	0	0	0	0	0	0	0	0	1
Stone circle?;Field system	0	0	0	0	0	0	1	0	0	0	0	1
Stone circle?;Meg structure?	0	1	0	0	0	0	0	0	0	0	0	1
Stone circle?;Round barrow?	0	0	0	2	0	0	0	0	0	0	0	2
Stone circle?;Standing stone?	0	0	0	0	0	0	0	0	0	0	1	1
Stone pair	1	4	2	0	0	0	0	0	0	0	0	7
Stone pair?	0	2	0	0	1	0	0	0	0	0	0	3
Stone pair?;Stone row	0	0	1	0	0	0	0	0	0	0	0	1
Stone pair?;Unknown	0	1	0	0	0	0	0	0	0	0	0	1
Stone row	0	0	1	0	0	0	1	0	0	0	0	2
Stone row?	0	1	1	0	2	0	1	0	0	0	2	7
Stone row?;Field boundary?	0	0	0	0	0	0	1	0	0	0	0	1
Total	26	119	98	53	53	9	82	10	59	227	186	922

It is projected that if year 3 of the PFRS project goes according to plan, and both the east Carmarthenshire and south Pembrokeshire areas are completed by March 2003, then for year 4 attention can be focussed on the remaining part of Pembrokeshire, namely the Preseli district. This area contains a large number of sites, of which at least 388 would ideally require a field visit (after finds, 'landform', 'destroyed', place-name and documentary sites are removed from the total).

Acknowledgements

This interim report was produced with the assistance of Jenny Hall and the fieldwork undertaken with Richard Ramsey. Both Ken Murphy and Gwilym Hughes commented on earlier drafts.

**PREHISTORIC FUNERARY & RITUAL SITES PROJECT
YEAR TWO: 2001-02
END OF YEAR INTERIM REPORT**

REPORT NUMBER 2002/22

MARCH 2002

This report has been prepared by Nikki Cook

Position Project Officer

Signature N.J. Cook Date 29th March 2002

This report has been checked and approved by Ken Murphy on behalf of Cambria Archaeology,
Dyfed Archaeological Trust Ltd.

Position Principal Archaeological Officer

Signature [Signature] Date 27.03.02

As part of our desire to provide a quality service we would welcome any comments you may have
on the content or presentation of this report