

# THE CAMBRIAN MILLS, DRE-FACH FELINDRE, CEREDIGION

## STRUCTURAL SURVEY REPORT APPENDIX 3: THE PHOTOGRAPHS



Report No. 2001/7

Report Prepared for:  
NMAGW



A R C H A E O L O G Y

CAMBRIA

A R C H A E O L O G Y





Plate 1: Southwest elevation of Mill 1, rebuilt in 1919-1920



Plate 2: Boiler house on northwest end of Mill 1





Plate 3: Northwest end of Mill 1.

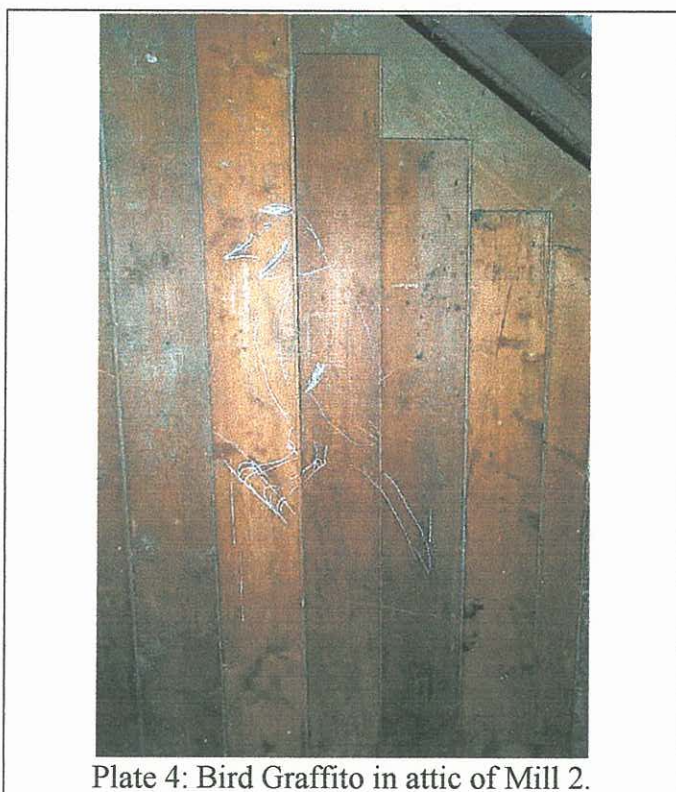


Plate 4: Bird Graffiti in attic of Mill 2.



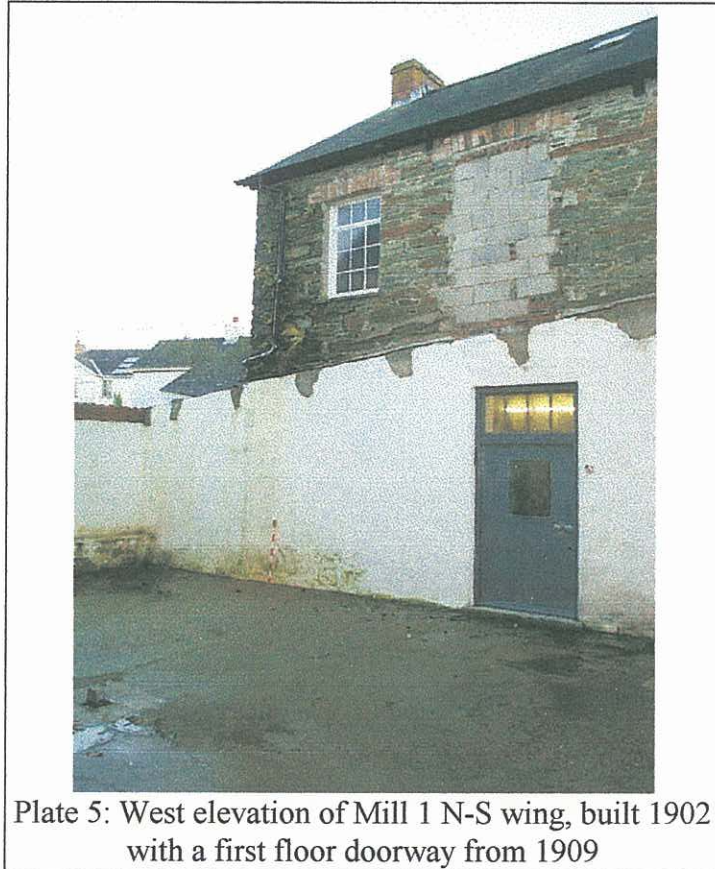


Plate 5: West elevation of Mill 1 N-S wing, built 1902  
with a first floor doorway from 1909

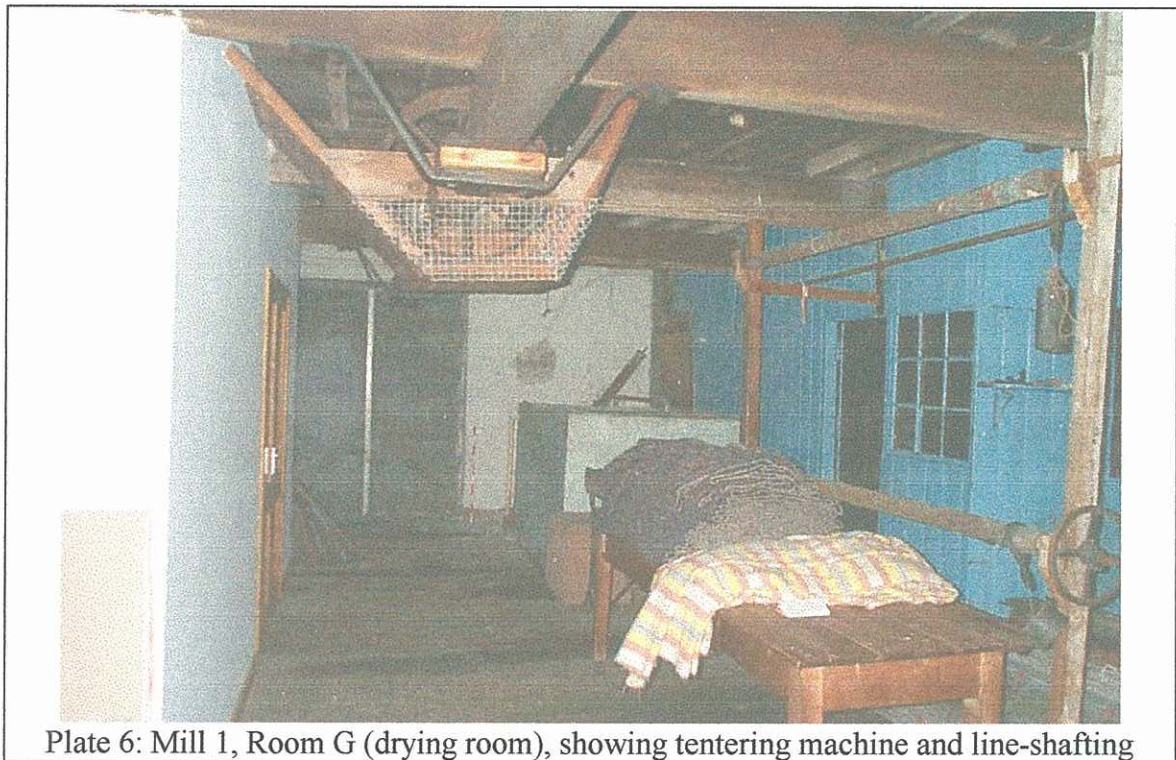


Plate 6: Mill 1, Room G (drying room), showing tentering machine and line-shafting

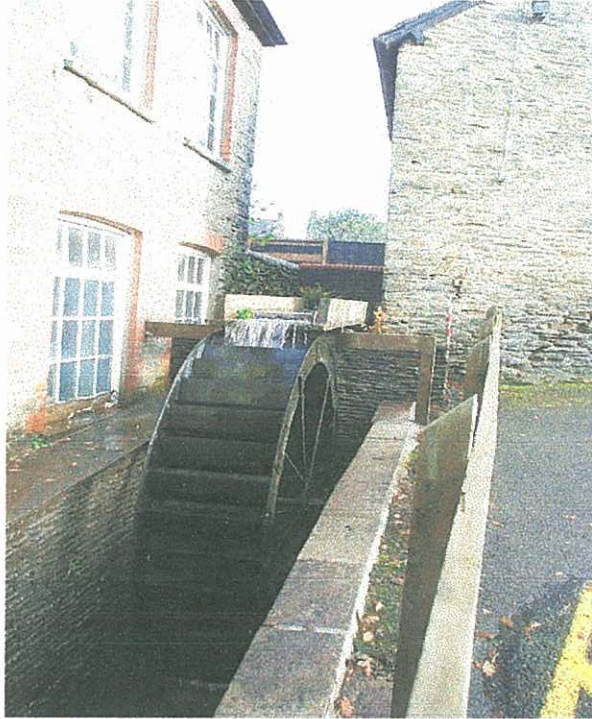


Plate 7: The wheelpit from the west, initially built  
before 1888



Plate 8: East elevation of Mill 2, built 1909





Plate 9: Mill 2, east wall of Room J (Gallery 2) showing hot- and cold-presses



Plate 10: Mill 2, Room K (Gallery 3) showing 1913 mules and belt-drives





Plate 11: Mill 2, attic room L looking west showing hoist and winch



Plate 12: Covered yard, first floor Room N south wall with 1902 doorways blocked/alterd in 1919-20





Plate 13: Open yard, looking west at Mill 2, showing external machine bearing



Plate 14: Exterior of north wall of Ty Pen Pound  
showing vertical ?belt slit





Plate 15: Scar of drive wheel on exterior of southeast elevation



Plate 16: Detail of brick window surround of ground floor southwest wall of Mill 1





Plate 17: Stonework above tailrace. Possibly from the Phase 1, pre-1888 mill.

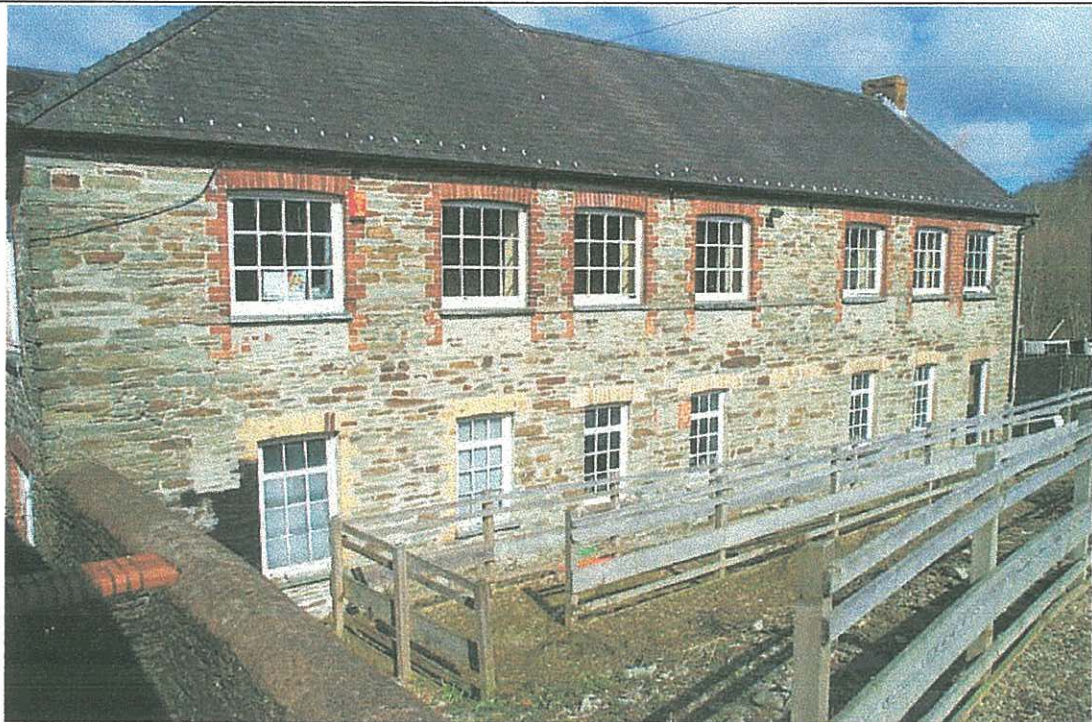


Plate 18: General view of southeast wall. Note the different colour brick window surrounds and the roof scar, at upper sill level, of the former gas-plant.