

Archaeoleg Cambria Archaeology

Tir Gofal Farm Visit Report

Crug y Whil

W/11/0953

ACA Report Number 2001/12

ACA Project Record 40414

**Report prepared for CCW
by ACA**

January, 2001

**Archaeoleg Cambria Archaeology
Shire Hall,
8, Carmarthen Street,
Llandeilo,
Carmarthenshire
SA19 6AF
Tel: (01558) 8231 21/8231 31
Fax: (01558) 8231 33
Email: cambria@acadat.com**



A R C H A E O L E G
CAMBRIA
A R C H A E O L O G Y

Tir Gofal Application Number W/11/0953

Address Crug y Whil **NGR** SN487428
Rhyddian, Llanybydder, Ceredigion SA40 9TB

TG Project Officer Bethan Williams, Aberystwyth

Archaeoleg Cambria Archaeology Project Record Number 40414

Visit Officer Anwen Cooper

Visit Date 12/10/00

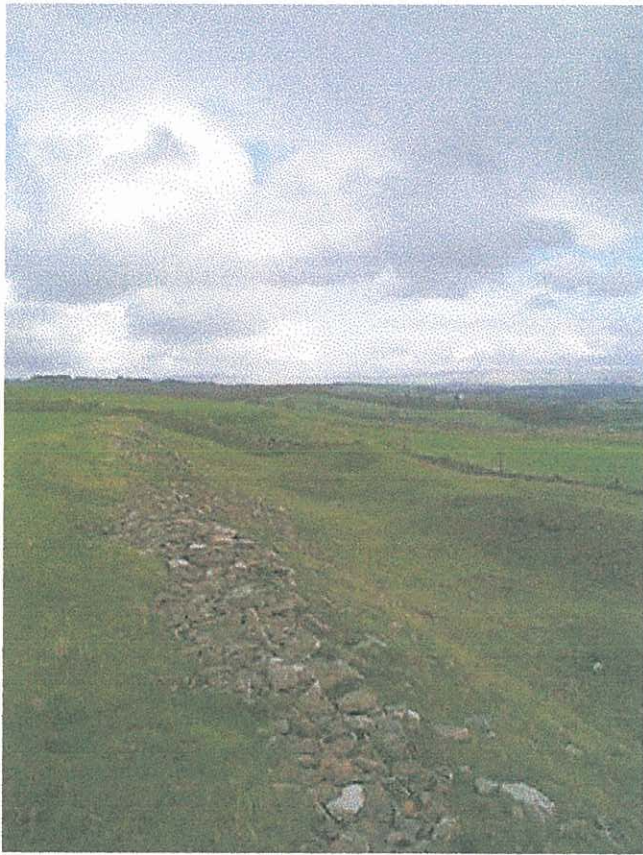


Plate 5 - mineral extraction (PRN 42044).



Plate 6 - rubble remains at Common-fynydd-fawr ruined farmstead (PRN 42050).

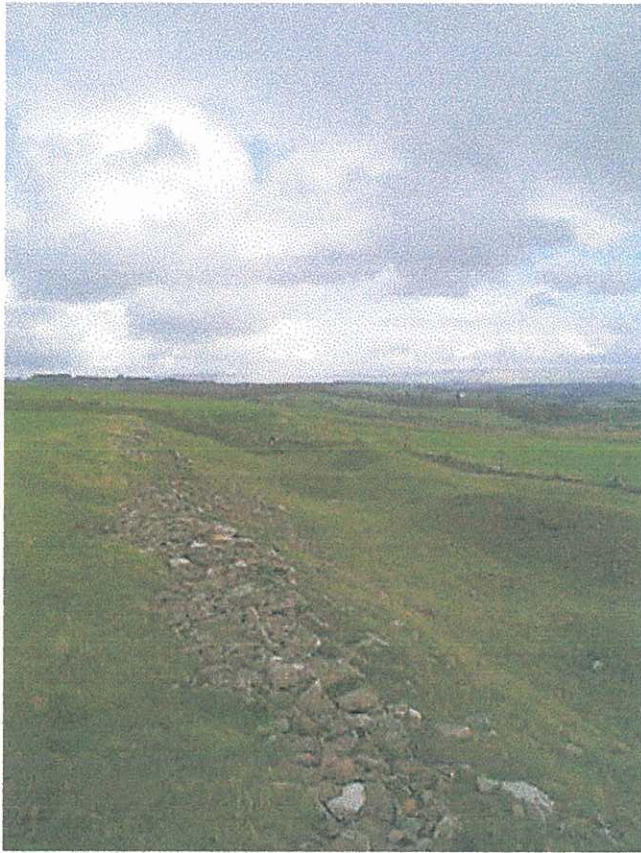


Plate 5 - mineral extraction (PRN 42044).



Plate 6 - rubble remains at Common-fynydd-fawr ruined farmstead (PRN 42050).

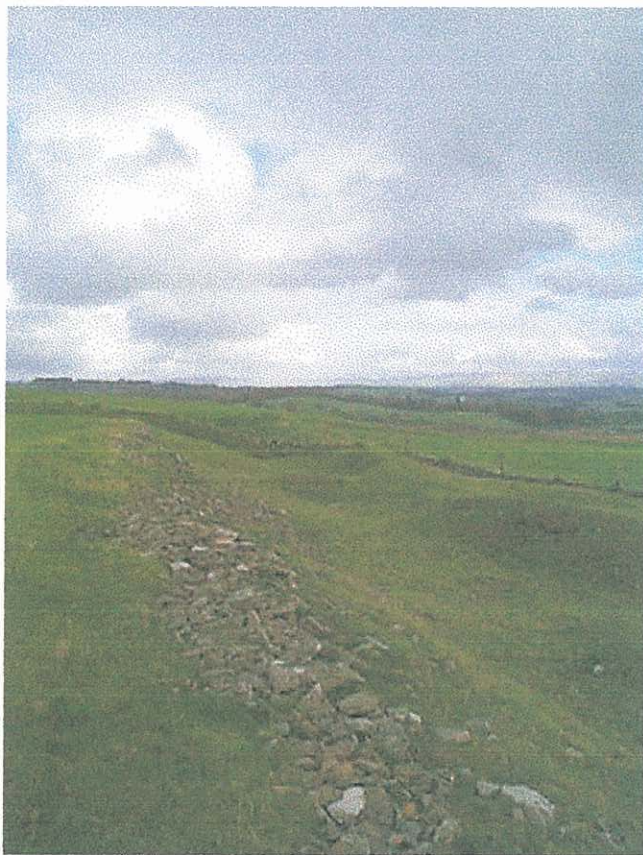


Plate 5 - mineral extraction (PRN 42044).



Plate 6 - rubble remains at Common-fynydd-fawr ruined farmstead (PRN 42050).

Plates



Plate 1 - the barn and stables at Croes Winter Farm (PRN 42033 and 42034).



Plate 2 - the millpond at Croes Winter Farm (PRN 42037).

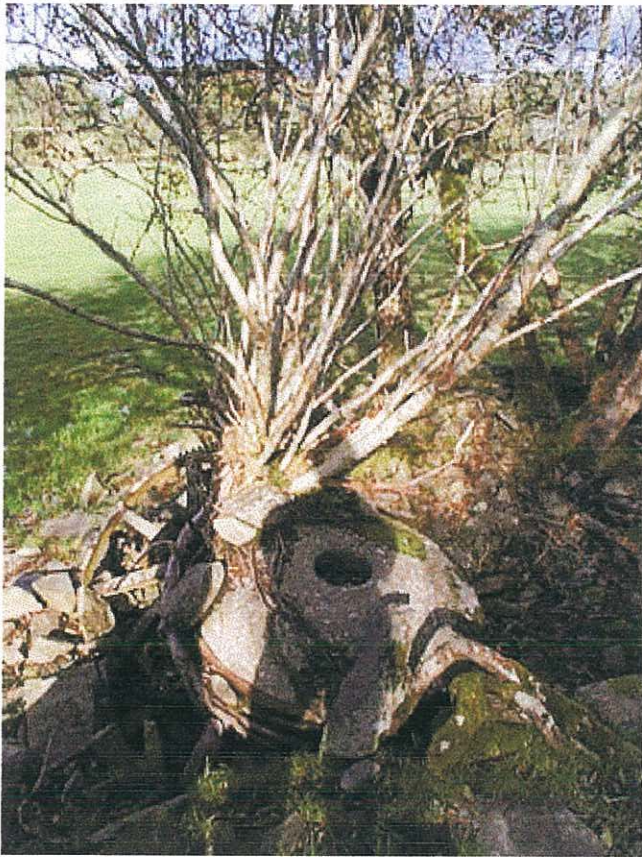


Plate 3 - the mill building and fittings at Croes Winter Farm (PRN 42038).



Plate 4 - the deserted farmstead of Cwm (PRN 42043).

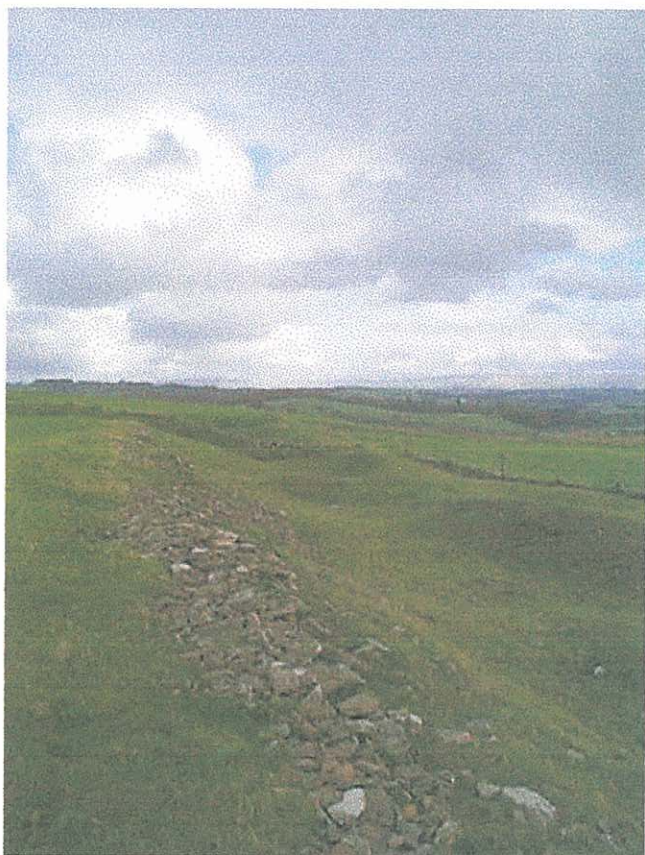


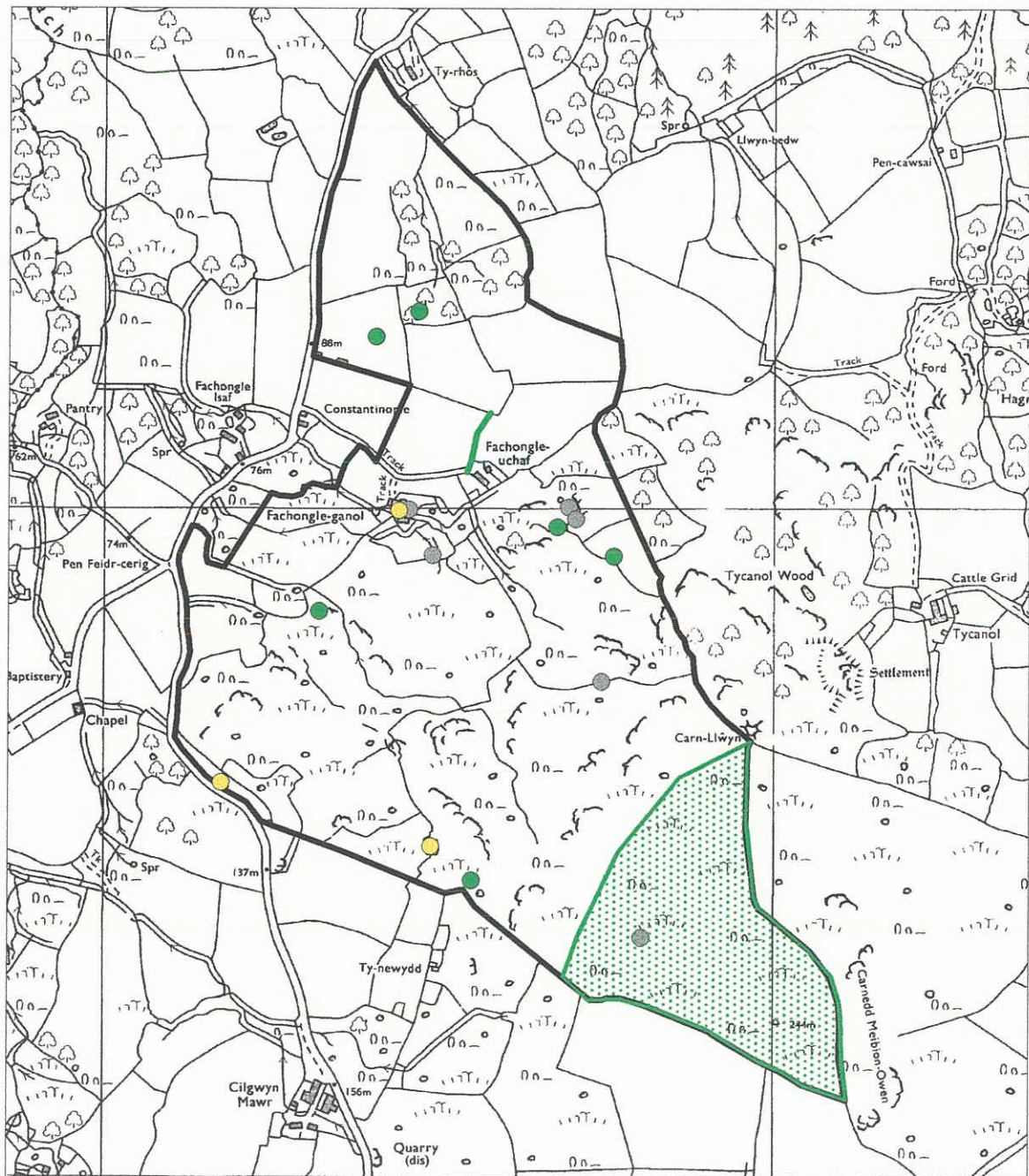
Plate 5 - mineral extraction (PRN 42044).



Plate 6 - rubble remains at Common-fynnedd-fawr ruined farmstead (PRN 42050).

Tir Gofal Farm Visit Report
Fachongle Ganol Farm
ACA Report No. 2001/
SN 03 NE
Scale 1:10000

Reproduced from Ordnance Survey map
with the permission of the Controller
of Her Majesty's Stationary Office.
Crown Copyright reserved.
Countryside Council Fro Wales
Licence No.GD272825G



Tir Gofal Farm Visit Report
Trefayog Farm
ACA Report No.2001/15
Map 3
SM 83 NE/93 NW
Scale 1:10000

Reproduced from Ordnance Survey map
with the permission of the Controller of
Her Majesty's Stationary Office.
Crown Copyright reserved.
Countryside Council for Wales
Licence No.GD272825G

