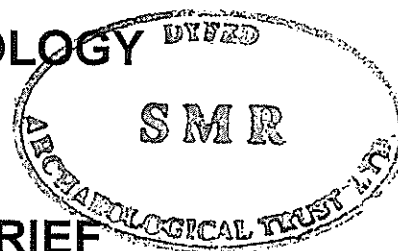


**ARCHAEOLEG CAMBRIA ARCHAEOLOGY
FIELD OPERATIONS**



**ARCHAEOLOGICAL WATCHING BRIEF
NEW 90MM WATERMAIN
AT**

01/03/2000

**PENLANTELYCH-MYDDFAI
CARMARTHENSHIRE**

Project Record No. 40374

MARCH 2000

Prepared
by
ACA Field Operations
for
Dwr Cymru

Archaeoleg Cambria Archaeology
The Shire Hall
Carmarthen Street
Llandeilo
Carmarthenshire
SA19 6AF
TEL: 01558 823121
FAX: 01558 823133
email: cambria@acadat.com



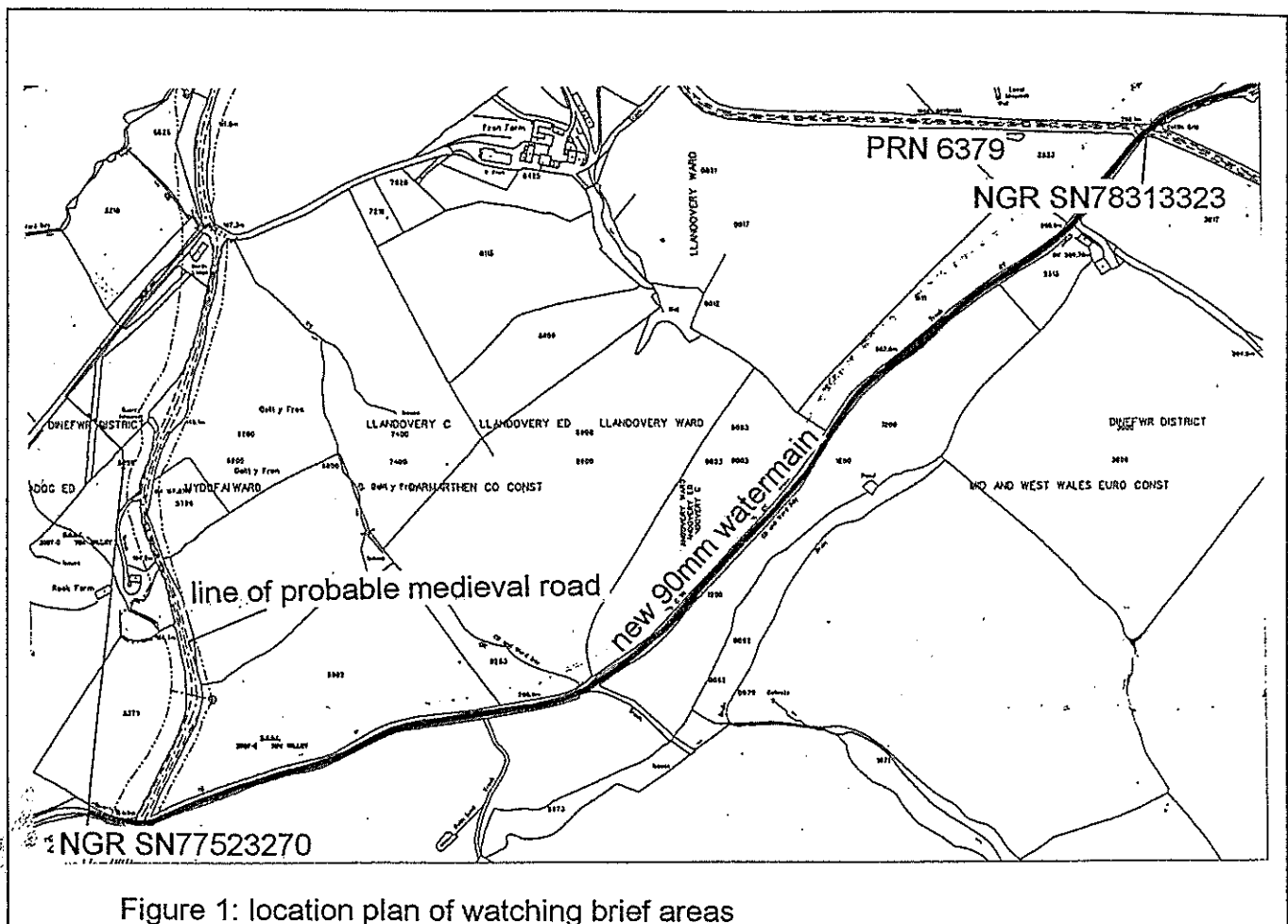
A R C H A E O L E G
CAMBRIA
A R C H A E O L O G Y

ARCHAEOLOGICAL WATCHING BRIEF PENLANTELYCH-MYDDFAI WATERMAIN SCHEME

CONTENTS	PAGE
Summary	2
1. Introduction	3
2. Results of the watching brief	4
Appendix One: Catalogue of watching brief archive	5
Figure One: Location plan	
Plate One: Excavation of the pipeline across the line of the Roman road	

SUMMARY

The route of a new 90mm watermain from Penlantelych - Myddfai passed along the northern edge of the Black Mountain and Mynydd Myddfai registered landscape of outstanding historical interest in Wales. It crossed the lines of a Roman road (PRN 6379) and a probable medieval road. Both areas revealed another possibly tarmaced road beneath the present road surface. There was no evidence for early roads, or other features in either area.



1. INTRODUCTION

1.1 PROJECT COMMISSION

The route of a new 90mm watermain from Penlantelych - Myddfai passed through an area of significant historic interest. It crossed the line of a Roman road (PRN 6379) and a medieval road line, therefore, it was recommended that an archaeological watching brief be carried out where the pipeline crossed the two roads. Dwr Cymru commissioned Archaeoleg Cambria Archaeology Field Operations to carry out the watching brief.

1.2 SCOPE OF PROJECT

The watching brief was intended to monitor the ground disturbance works and to record any structures, features or deposits considered to be of archaeological interest.

1.3 REPORT OUTLINE

This report describes the physical environment of the site (Section 2) before summarising the watching brief results (Section 3) and the conclusions (Section 4) based on the results of Sections 2 and 3. Supporting data, including detailed records of the watching brief (Appendix One), are given in a series of appendices.

1.4 ABBREVIATIONS

Sites recorded on the county Sites and Monuments Record (SMR) will be identified by their Primary Record Number (PRN) and located by their National Grid Reference (NGR). Any new sites discovered during the course of the project will be allocated a new PRN and identified by their NGR.

Archaeological features and contexts will be referred to using the continuous three-figure numbering system (e.g.001) employed by Archaeoleg Cambria Archaeology Field Section.

2. WATCHING BRIEF RESULTS

2.1 LOCATION

The pipeline crossed two areas of archaeological interest, the first, at NGR SN78313323, was the line of a Roman road (PRN 6397) leading south from the fort at Llandovery, and the second as the line of hollow way, at NGR SN77523270 which may have had medieval origins. In both locations the roads are narrow sunken roads and flanked by substantial banks and hedges. The pipeline route is along the north edge of the Black Mountain and Mynydd Myddfai registered landscape of outstanding historic interest.

2.2 METHODOLOGY

The new watermain was laid in a narrow (c.0.3m) trench excavated using a mechanical excavator. Once the trench was open the sides were examined and photographed and rapid field notes were taken. The very wet conditions on the day of the watching brief meant that water and mud were continually running down the trench sides obscuring what detail there was.

2.3 THE RESULTS OF THE WATCHING BRIEF

Both areas revealed very similar stratigraphic sequences. In both trenches the present road and its hardcore foundation overlay a thin layer of cobbles in a loose grey/brown clay matrix. This in turn overlay a layer of angular stones which may have been loosely tarmaced. No other road surfaces or features were identified in either trench. It is clear that in the areas monitored there are no early road surfaces surviving beneath the modern road.

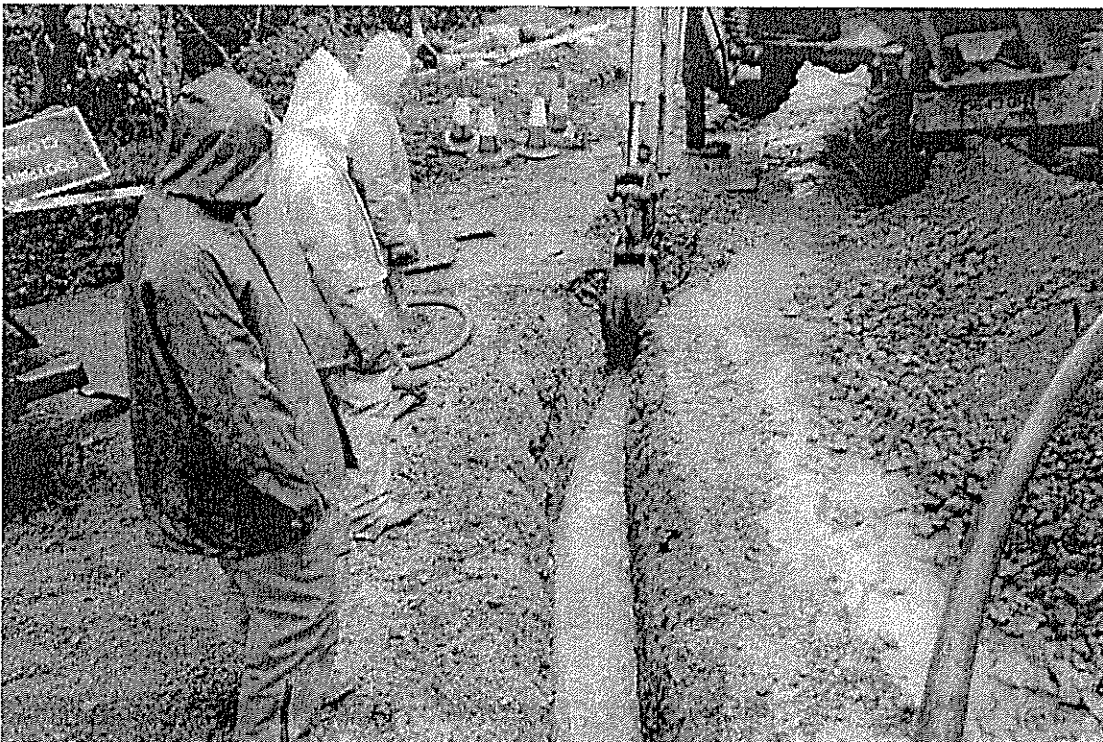


Plate 1: excavating across the line of the Roman road (PRN 6397)

APPENDIX ONE: CATALOGUE OF WATCHING BRIEF ARCHIVE

The project archive has been indexed and catalogued according to National Monument Record (NMR) categories and contains the following:

- A.** Copy of final report.
- B.** Site records, including context record sheets and site notebook.
- C.** Drawing catalogue and site drawings.
- D.** Site photographs - catalogue, colour slide and B/W contact sheets.
- E.** Finds catalogue, individual finds record and finds report.
- G.** List of references, including primary and secondary sources.
- I.** Archive report and draft copies of final report.
- J.** Publication drawings.
- M.** Miscellaneous correspondence.

There is no material in categories **F**, **H**, **K**, **L** and **N**.

The archive is currently held by Archaeoleg Cambria Archaeology Field Operations, Llandeilo, Dyfed as project number 40374.