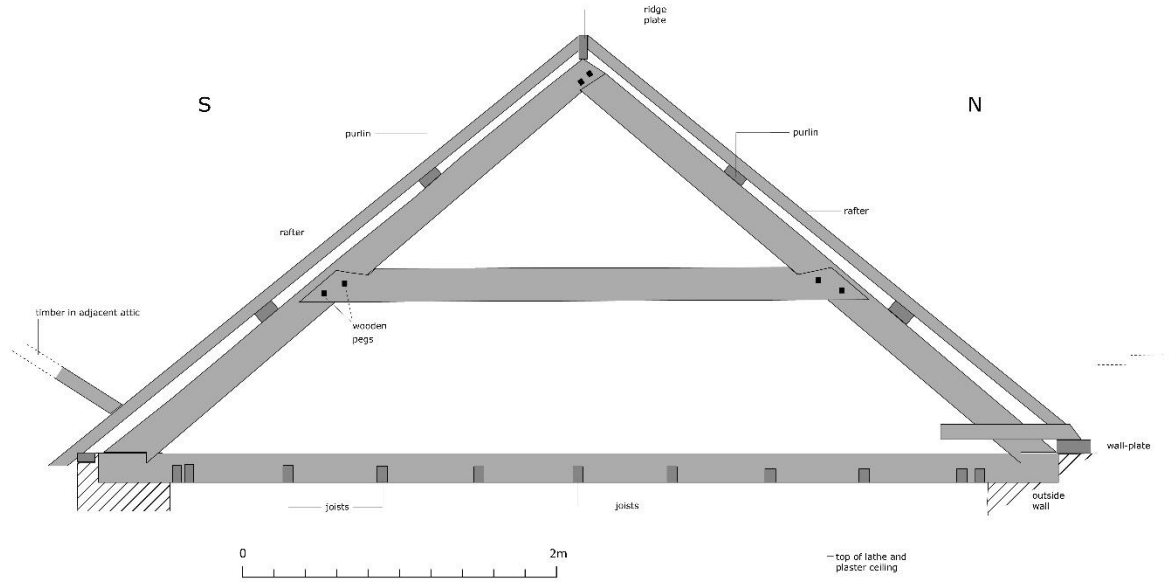


Manor House Farm, Stackpole, Pembrokeshire

Principal rafter in main attic

March 2009
1:50



Manor House Farm, Stackpole, Pembrokeshire

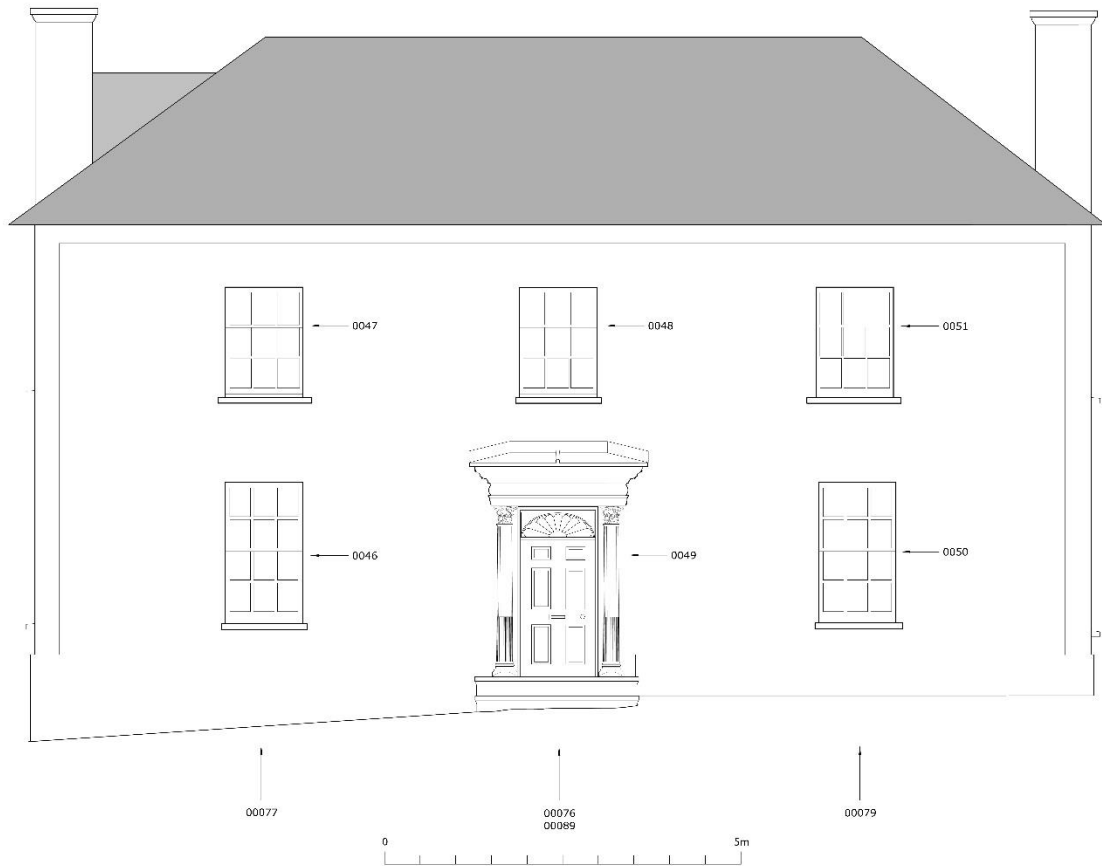
North facing facade

March 2009
1:50

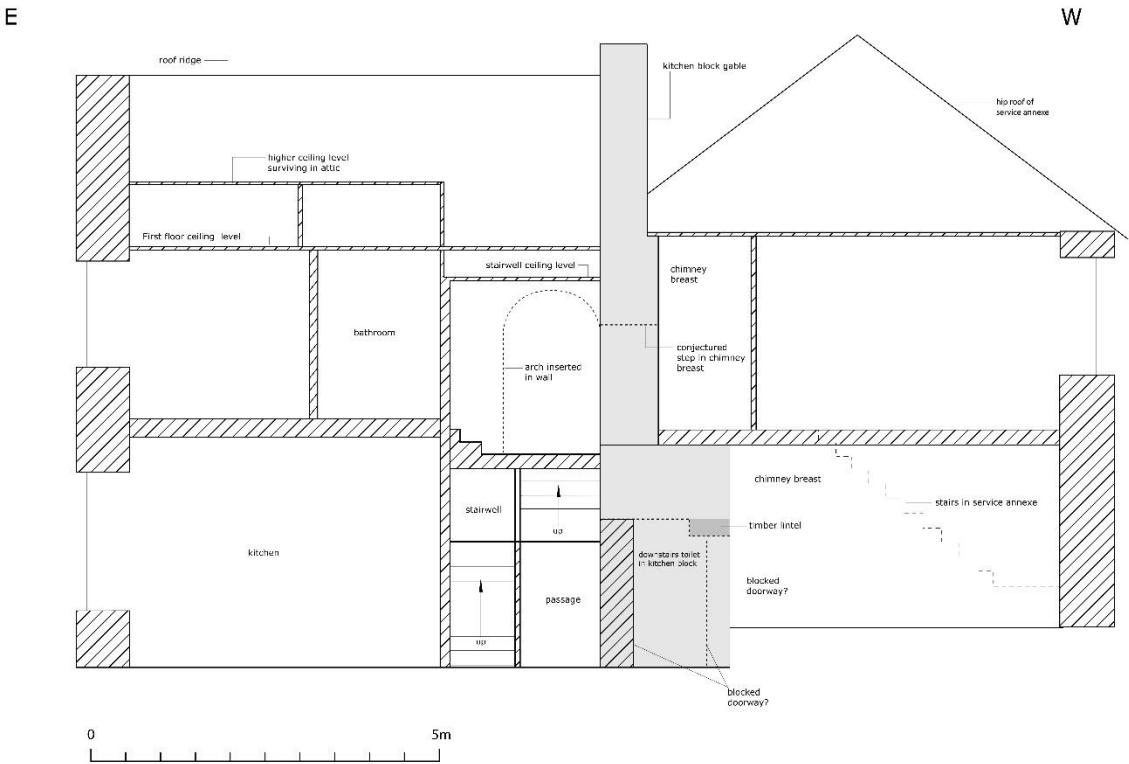


Manor House Farm, Stackpole, Pembrokeshire
North facing facade (photo nos.)

March 2009
1:50



Manor House Farm, Stackpole, Pembrokeshire
 East-west cross section through kitchen block and service annexe
 March 2009
 1:50



Manor House Farm, Stackpole, Pembrokeshire
 East facing facade
 March 2009
 1:50





Manor House Farm, Stackpole, Pembrokeshire

Elevation, plan and profile of Dairy window

March 2009

1:20

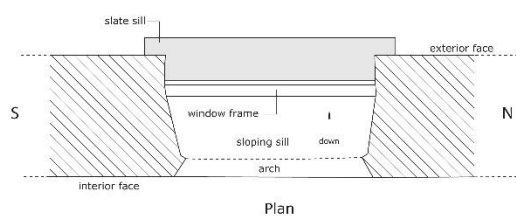
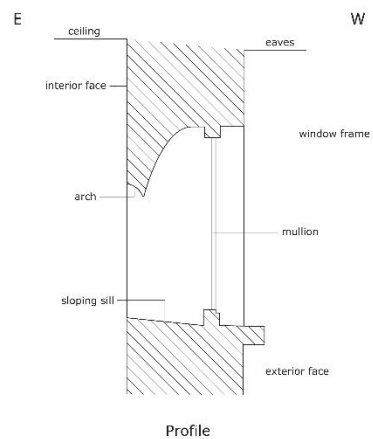
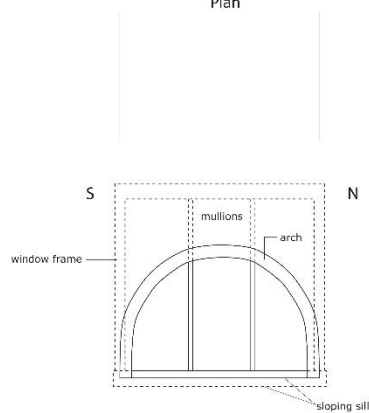


photo nos. 1015, 1016, 1017

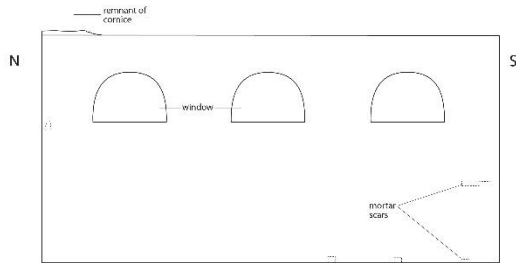


0 1m

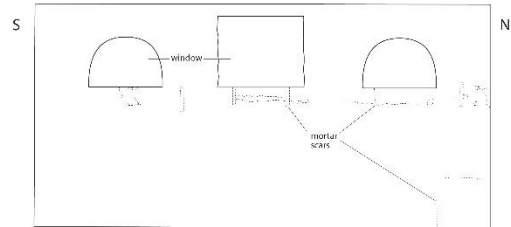
Manor House Farm, Stackpole, Pembrokeshire
Interior elevations of Dairy with photo nos.

March 2009

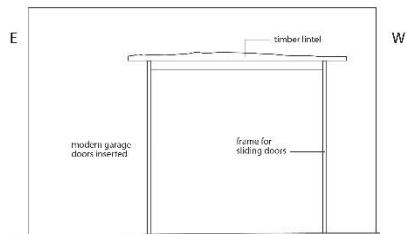
1:50



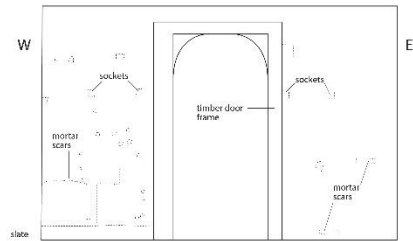
West facing elevation - photo nos. 1029, 1030, 1031, 1032, 1035



East facing elevation - photo nos. 1027, 1028



North facing elevation - photo no. 1033



South facing elevation - photo nos. 1023, 1024, 1025, 1026, 1042, 1043

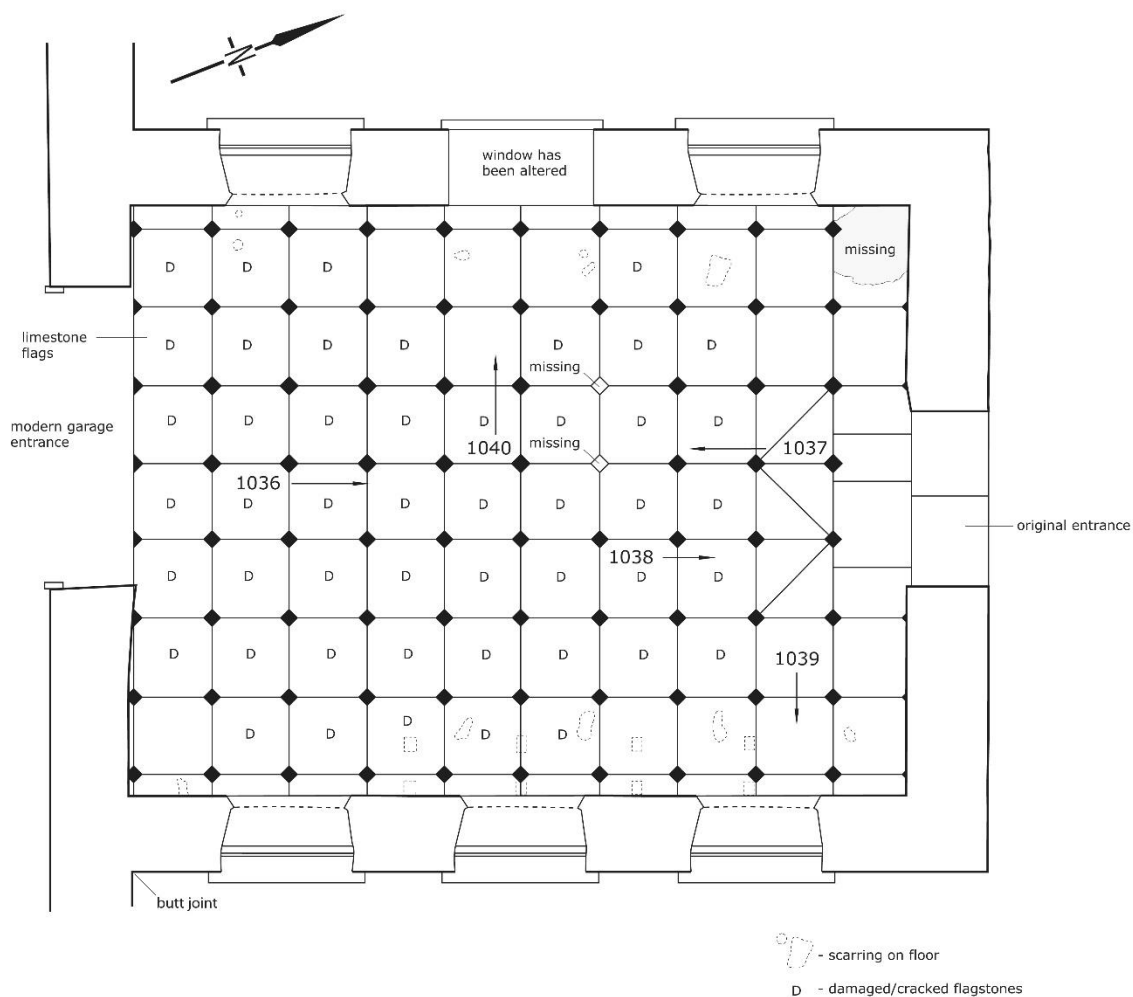


Manor House Farm, Stackpole, Pembrokeshire

Plan of Dairy floor with photo nos.

March 2009

1:50

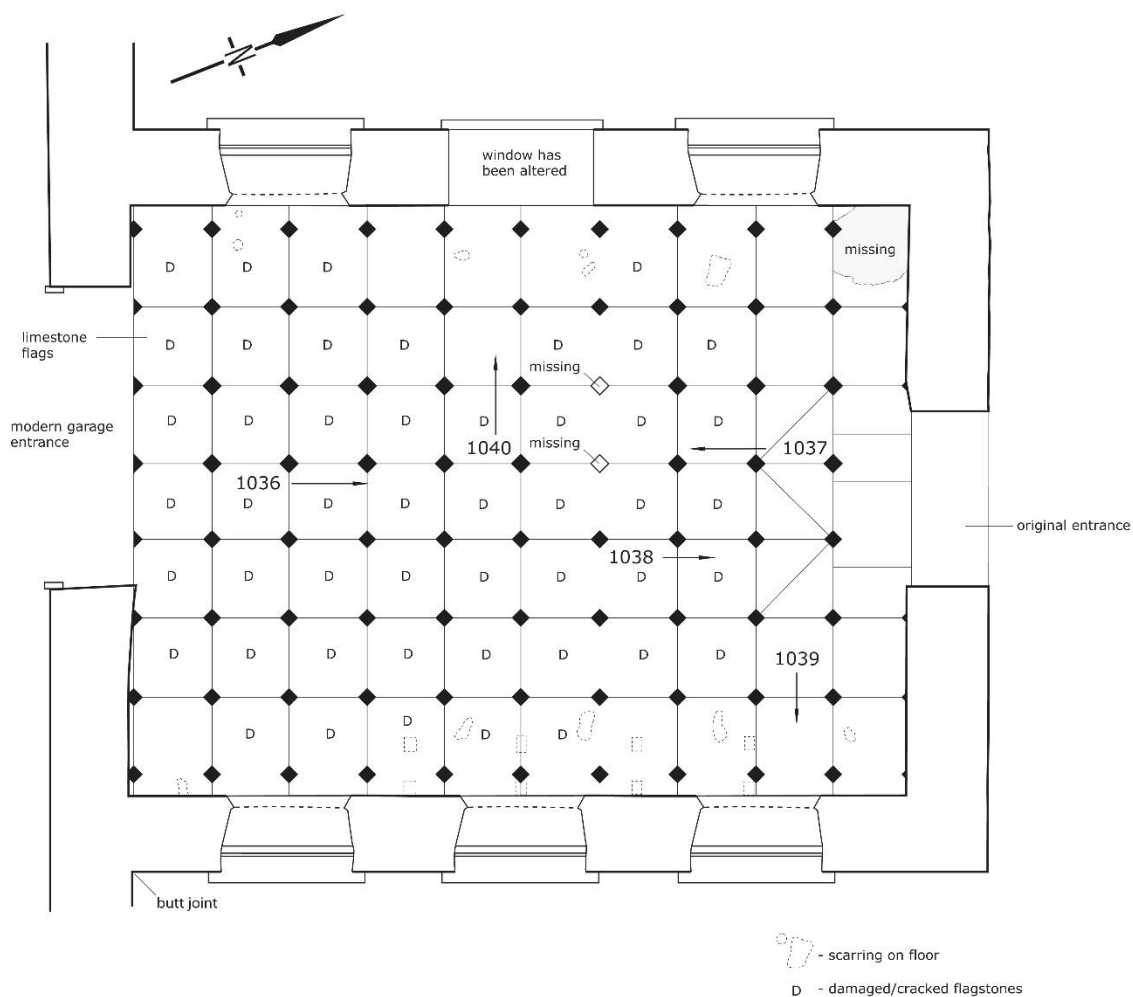


Manor House Farm, Stackpole, Pembrokeshire

Plan of Dairy floor with photo nos.

March 2009

1:50

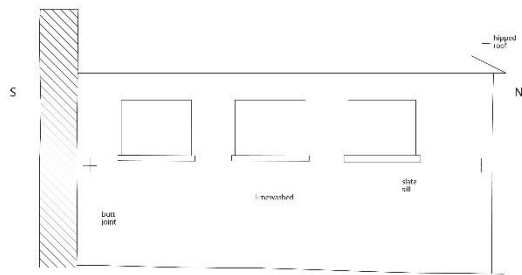


Manor House Farm, Stackpole, Pembrokeshire

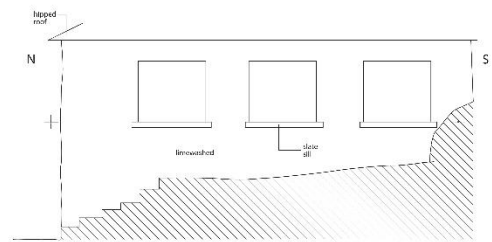
Exterior elevations of Dairy with photo nos.

March 2009

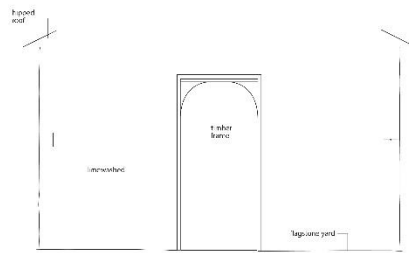
1:50



East facing elevation - photo no. 1022



West facing elevation - photo nos. 1018, 1019



North facing elevation photo nos. 1020, 1021

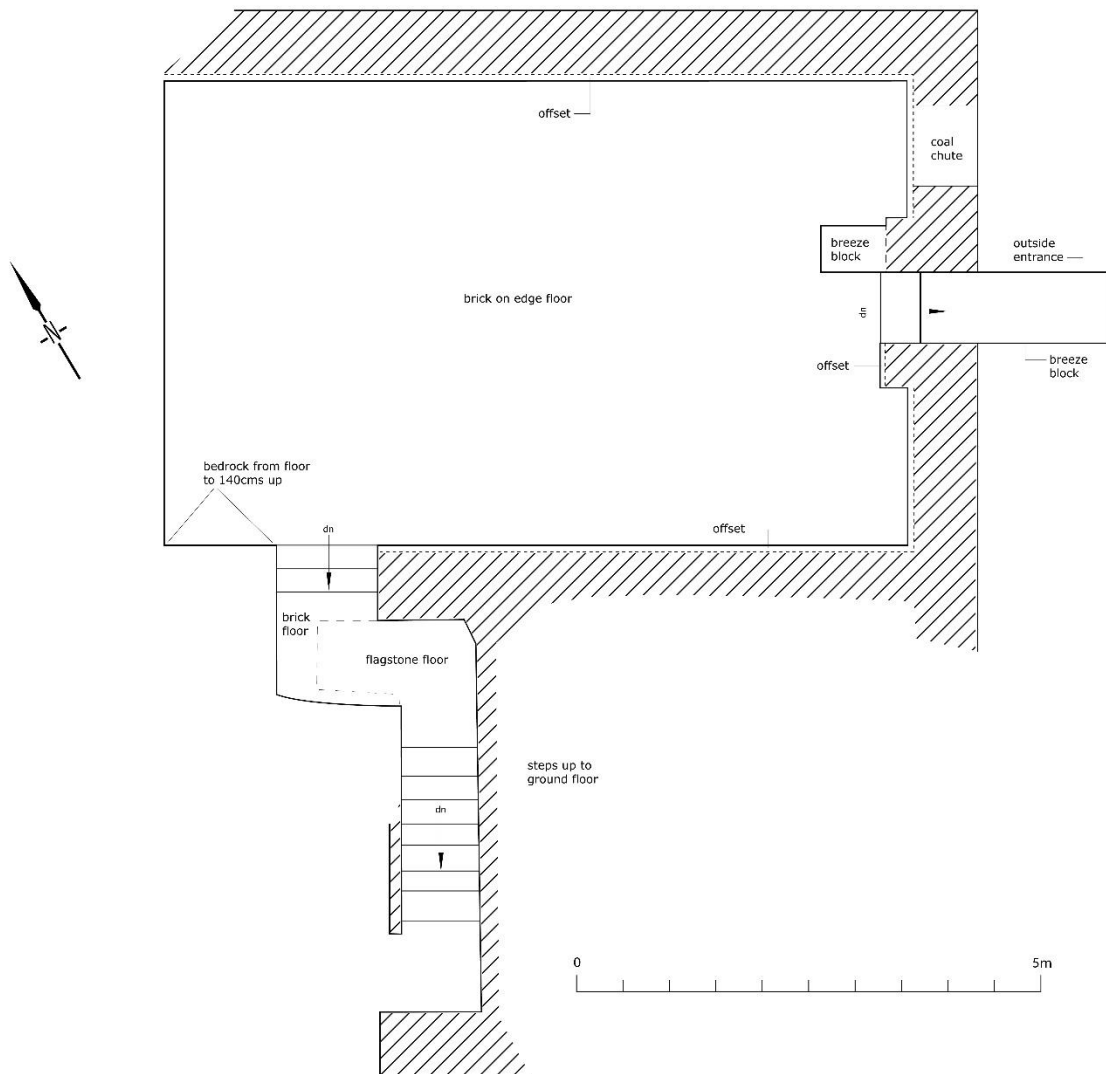


Manor House Farm, Stackpole, Pembrokeshire

Cellar plan

March 2009

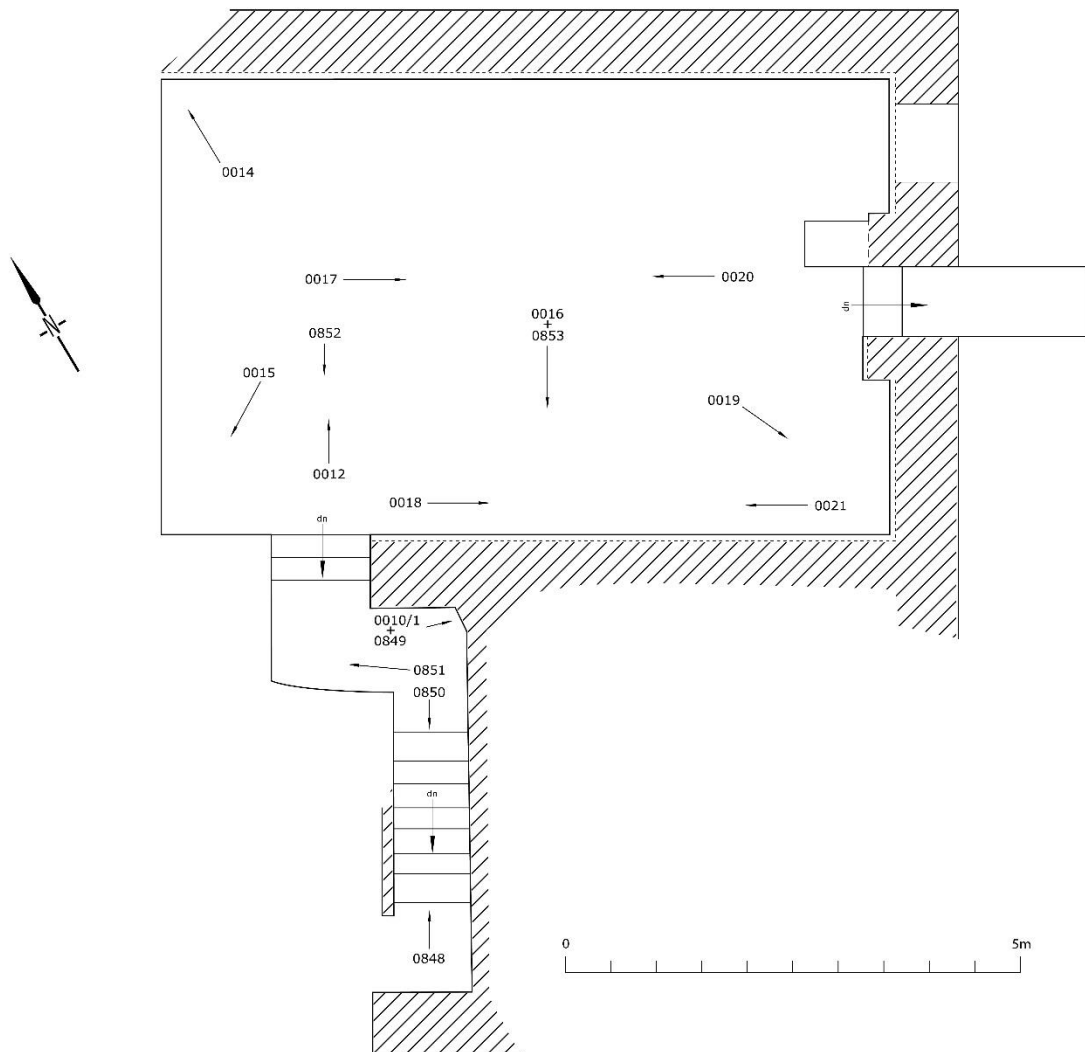
1:50



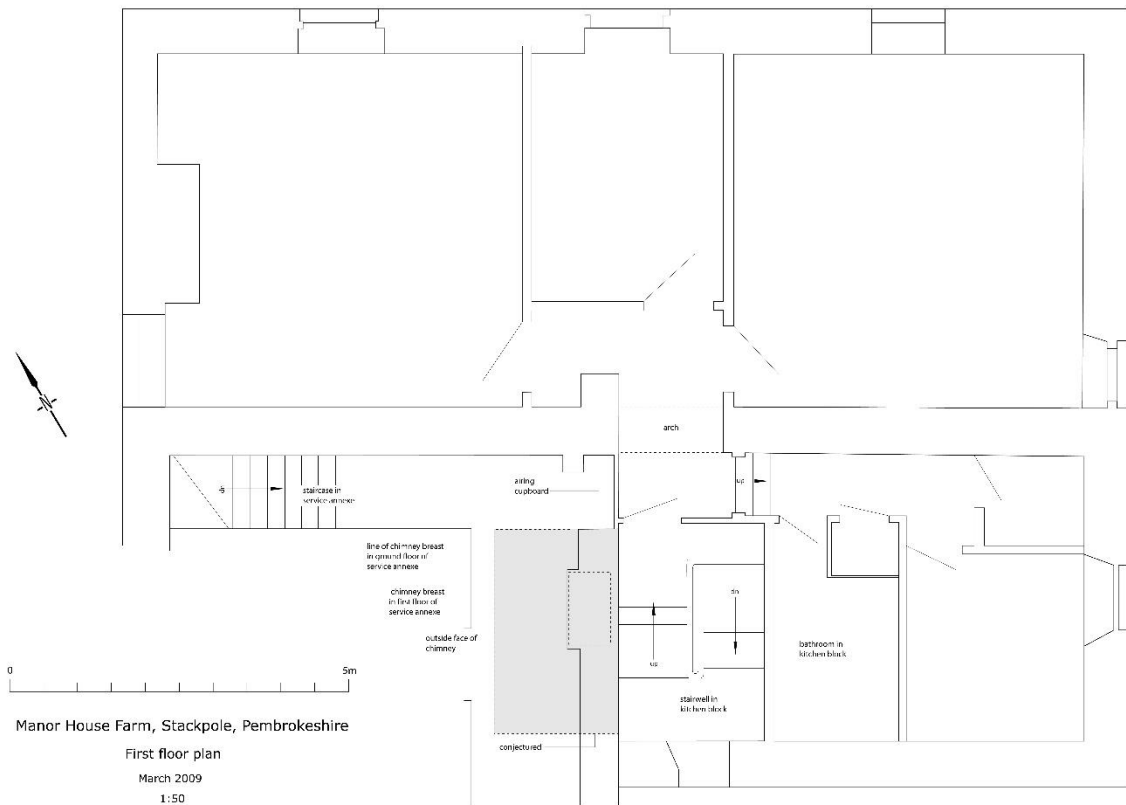
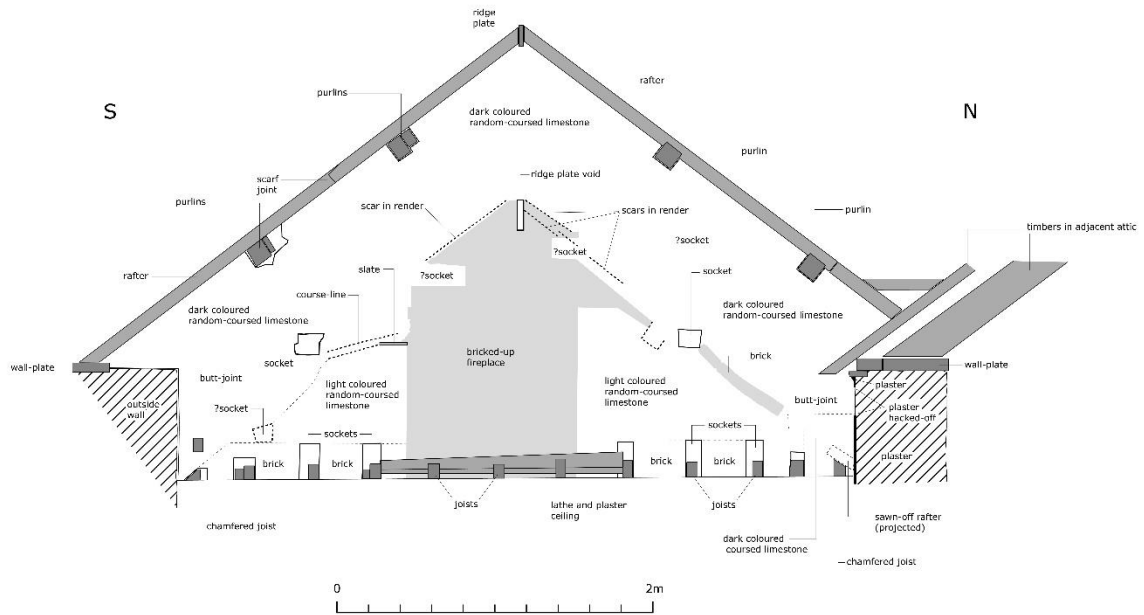
Manor House Farm, Stackpole, Pembrokeshire
Cellar plan (photo nos.)

March 2009

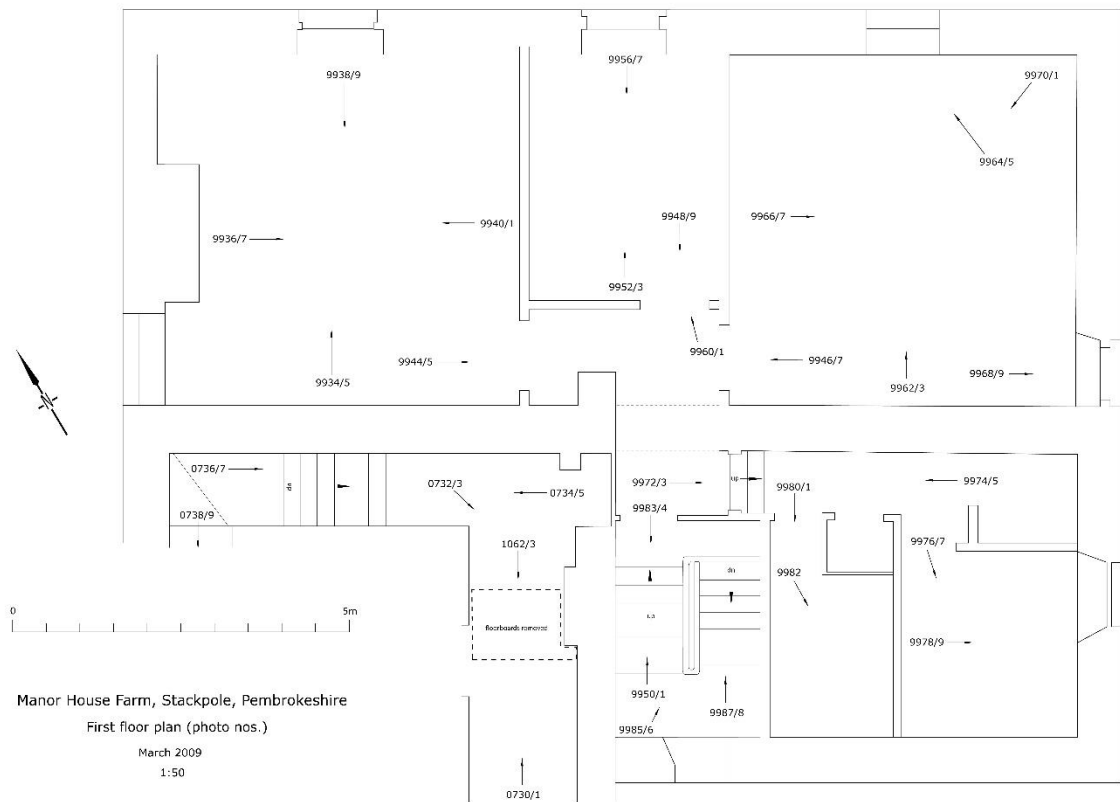
1:50



Manor House Farm, Stackpole, Pembrokeshire
 Interior elevation of east facing gable in 'kitchen block'
 March 2009



Manor House Farm, Stackpole, Pembrokeshire
 First floor plan
 March 2009
 1:50



Manor House Farm, Stackpole, Pembrokeshire

West facing facade

March 2009

1:50

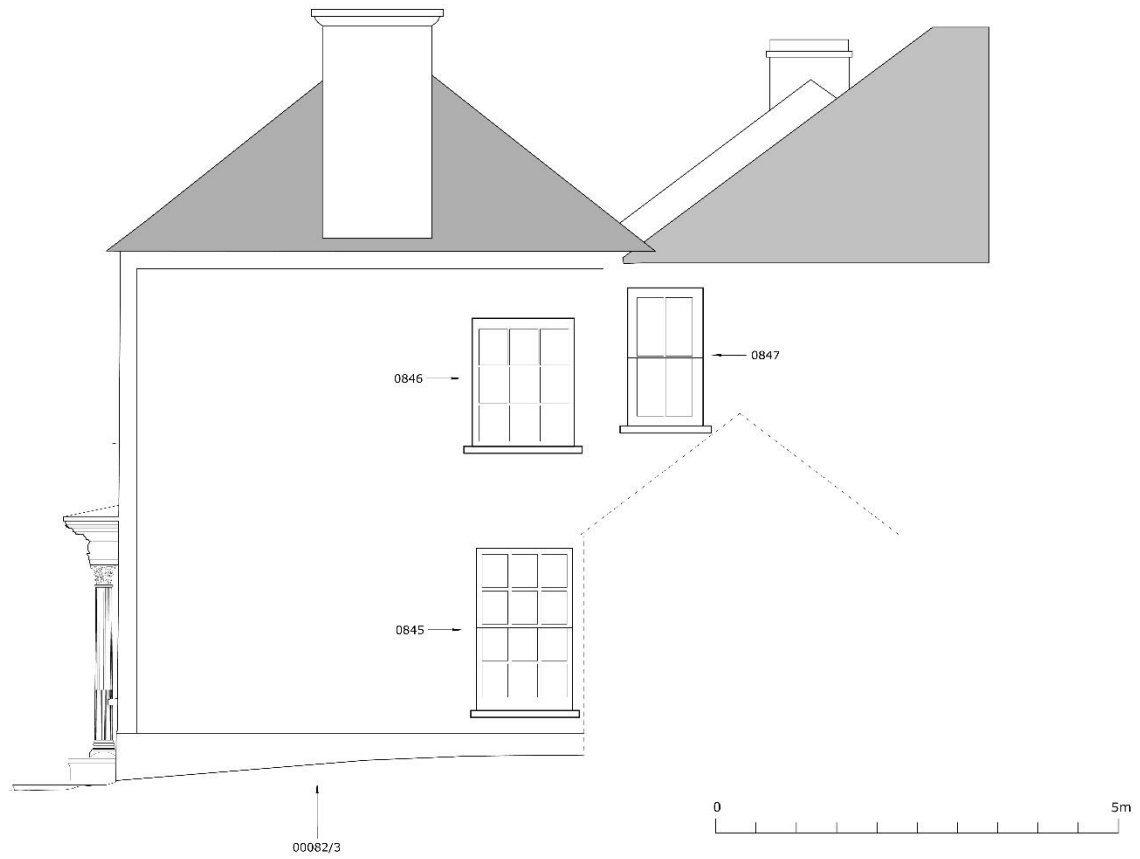


Manor House Farm, Stackpole, Pembrokeshire

West facing facade (photo nos.)

March 2009

1:50

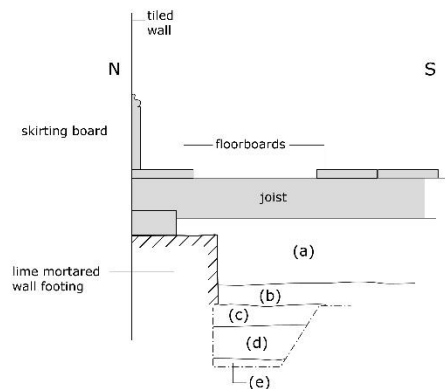


Manor House Farm, Stackpole, Pembrokeshire

Kitchen test pit

March 2009

1:10



- (a) - very dark grey, loose, ashy layer
- (b) - compact, white mortar layer
- (c) - compact, brown soil with small mortar lumps
- appears to go under wall footing
- (d) - compact, white mortar layer
- (e) - firm, brown clayish soil. Natural?

see photo nos. 1067-9

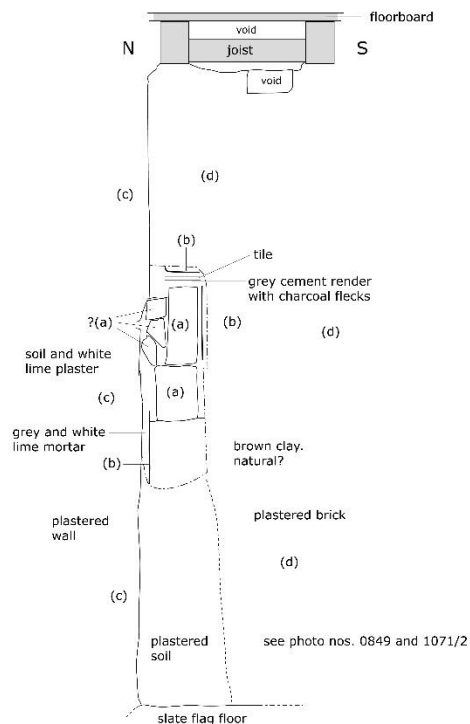


Manor House Farm, Stackpole, Pembrokeshire

Cellar entrance corner

March 2009

1:10



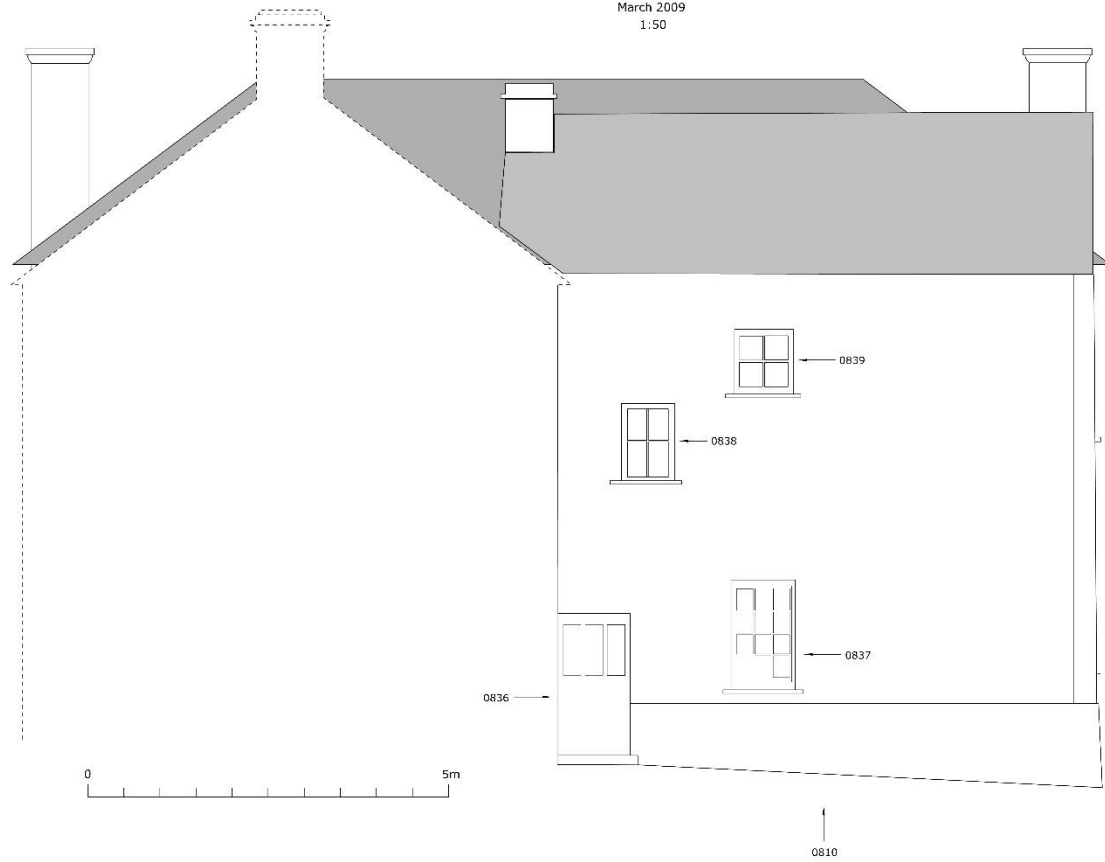
Note: shallow footing (a), probably cut (b), construction trench for cellar wall (c) = later phase. Cement rendered brick wall later again. Therefore early footing (a) is only



Manor House Farm, Stackpole, Pembrokeshire
South facing facade
March 2009
1:50



Manor House Farm, Stackpole, Pembrokeshire
South facing façade (photo nos.)
March 2009
1:50



March 2009

1:50



Plan of attic in Georgian front

March 2009

1:50

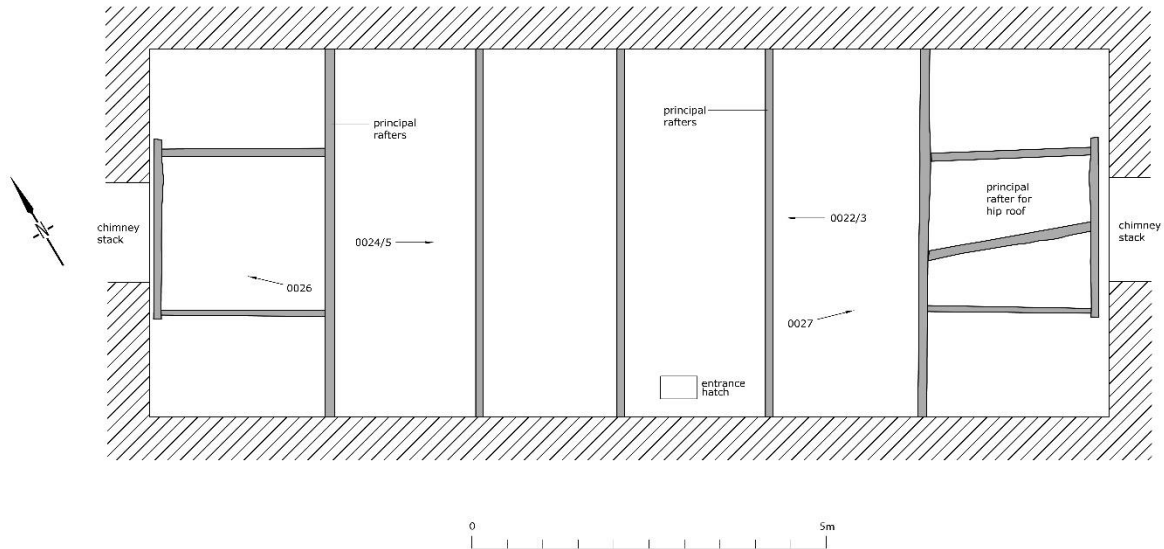


Manor House Farm, Stackpole, Pembrokeshire

Plan of attic in Georgian front (with photo nos.)

March 2009

1:50

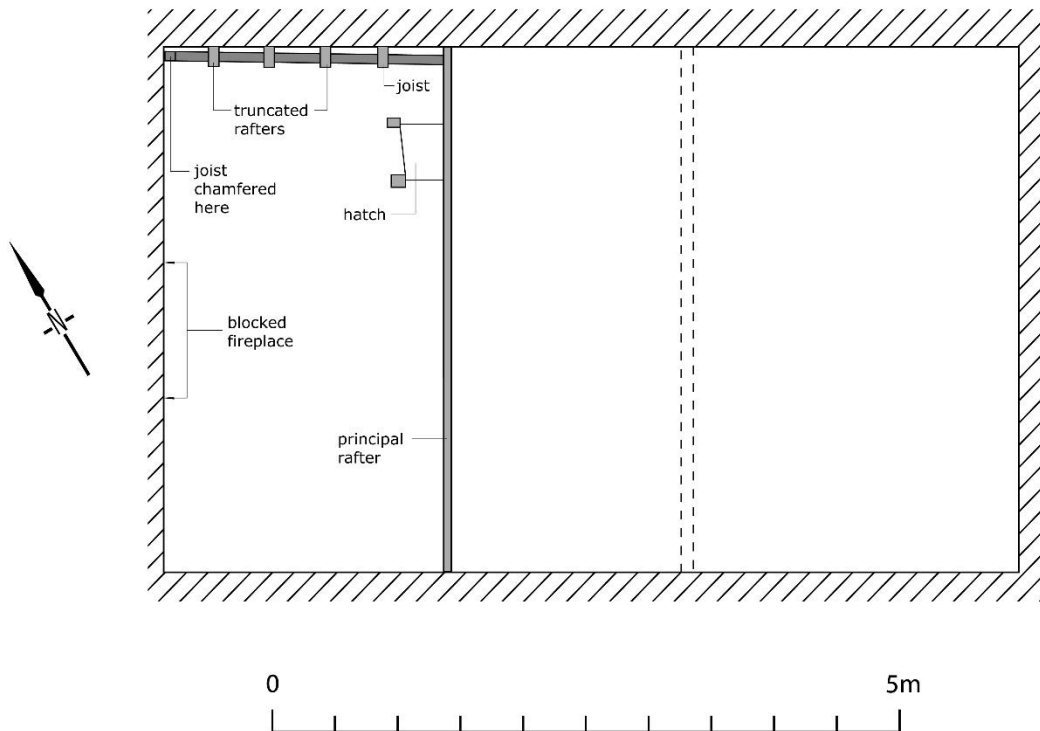


Manor House Farm, Stackpole, Pembrokeshire

Plan of attic in 'kitchen block'

March 2009

1:50

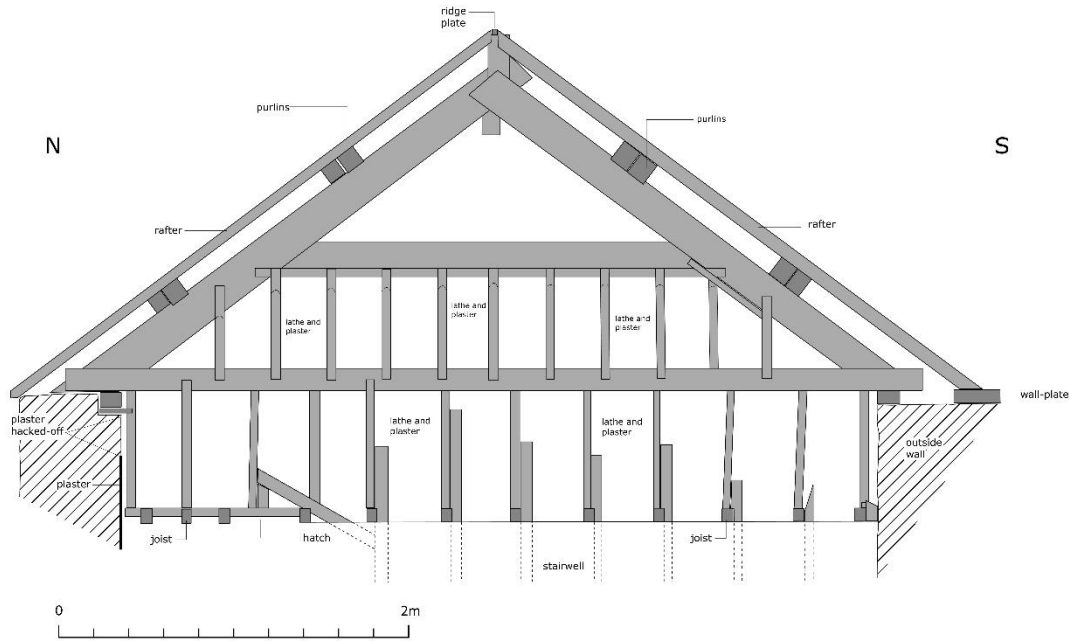


Manor House Farm, Stackpole, Pembrokeshire

Principal rafter in kitchen block

March 2009

1:50



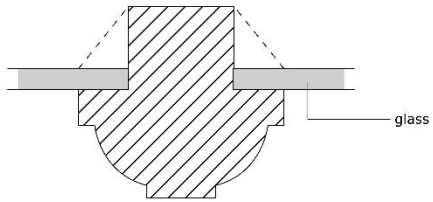
Manor House Farm, Stackpole, Pembrokeshire

Internal details

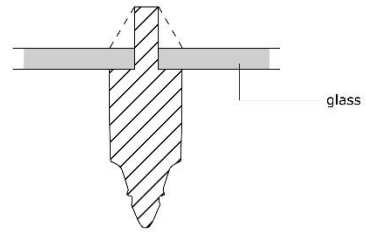
March 2009

1:10

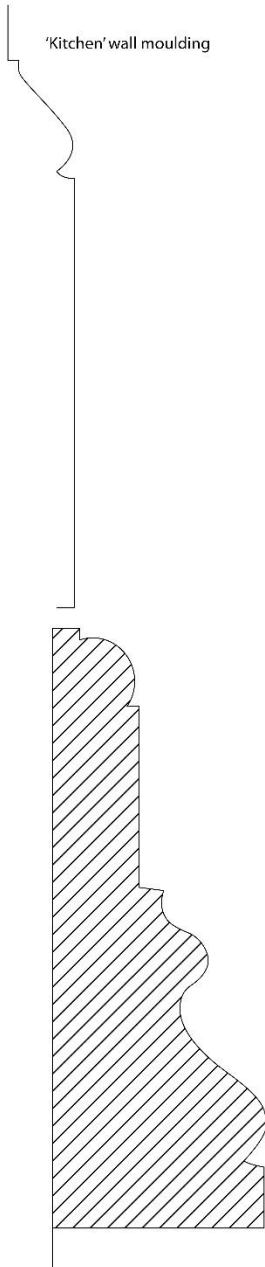
Mullion moulding of front east window, ground floor



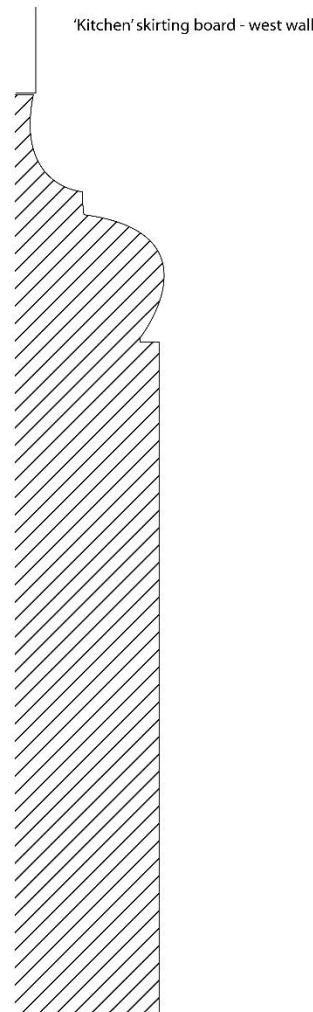
Mullion moulding of 'kitchen' east window



'Kitchen' wall moulding



'Kitchen' skirting board - west wall



0 10cms

