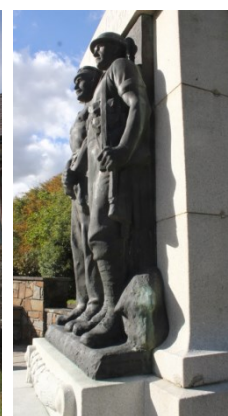


# Threat-Related Assessment of Twentieth Century Military Sites:

## FIRST WORLD WAR – COMMEMORATION



Prepared by Dyfed Archaeological  
Trust  
For Cadw

**DYFED ARCHAEOLOGICAL TRUST**

DAT Event Record No. 112269

Report No. 2018/26

Cadw Project No. DAT 115B

March 2019

**Threat-Related Assessment of Twentieth Century Military Sites:  
FIRST WORLD WAR – COMMEMORATION**

By

A Pyper, F Sage, K Murphy and R Jones

The copyright of this report is held by Cadw and Dyfed Archaeological Trust Ltd.

The maps are based on Ordnance Survey mapping provided by the National Assembly for Wales with the permission of the Controller of Her Majesty's Stationary Office, Crown Copyright. All rights reserved. Unauthorised reproduction infringes Crown Copyright and may lead to prosecution or civil proceedings. License No.: 100017916 (2014).

Historic mapping reproduced here is covered under Crown Copyright and Landmark Information Group. All rights reserved. Dyfed Archaeological Trust Ltd. On behalf of Welsh Government 2014.

Scheduled Ancient Monument polygon data in this report is based on Cadw's Historic Assets Data. Crown Copyright. Cadw.



Llywodraeth Cymru  
Welsh Government

*Ymddiriedolaeth Archaeolegol Dyfed Cyf*  
Corner House, 6 Stryd Caerfyrddin, Llandeilo, Sir  
Gaerfyrddin SA19 6AE

*Ffon: Ymholiadau Cyffredinol 01558 823121*

*Ebost: [info@dyfedarchaeology.org.uk](mailto:info@dyfedarchaeology.org.uk)*

*Gwefan: [www.archaeolegdyfed.org.uk](http://www.archaeolegdyfed.org.uk)*

*Dyfed Archaeological Trust Limited*  
Corner House, 6 Carmarthen Street, Llandeilo,  
Carmarthenshire SA19 6AE

*Tel: General Enquiries 01558 823121*

*Email: [info@dyfedarchaeology.org.uk](mailto:info@dyfedarchaeology.org.uk)*

*Website: [www.dyfedarchaeology.org.uk](http://www.dyfedarchaeology.org.uk)*

*The Trust is both a Limited Company (No. 1198990) and a Registered Charity (No. 504616)*

*CADEIRYDD CHAIR: J PROTHEROE JONES, CYFARWYDDWR DIRECTOR: K MURPHY BA MIFA*

## CONTENTS

CONTENTS .....	3
FIGURES .....	4
SUMMARY .....	5
INTRODUCTION .....	6
Project Aims and Objectives.....	6
Methodology .....	6
Background .....	7
RESULTS .....	7
Number of sites.....	7
Memorial types .....	8
Crosses.....	10
Calvaries.....	13
Cenotaphs.....	14
Obelisks.....	14
Pillars and columns.....	15
Sculpture. ....	15
Other freestanding memorials.....	17
Gates. ....	17
Gardens.....	18
Halls.....	19
Modern .....	21
Locations of free-standing memorials.....	22
Materials of free-standing memorials .....	25
Artists and masons of free standing memorials .....	26
The language of inscriptions .....	27
Date of erection .....	28
Condition.....	28
Designation of free-standing monuments .....	30
Acknowledgements .....	31
BIBLIOGRAPHY .....	32

## FIGURES

Figure 1: Distribution of freestanding war memorials across Dyfed .....	8
Figure 2: Distribution of cross type memorials .....	11
Figure 3: The Celtic crosses of St Clears, Lampeter Velfrey and Llandissilio West .....	12
Figure 4: The Latin crosses of Narberth, Llangynog and Marloes.....	12
Figure 5: St Issells wheel cross .....	13
Figure 6: The Pembroke Dock calvary and the Freshwater West calvary. ....	13
Figure 7: The cenotaphs at Tenby, Cardigan and Llanboidy .....	14
Figure 8: The Carew obelisk and the Llanybydder obelisk .....	15
Figure 9: Clynderwen memorial, Merlin's Bridge and Newcastle Emlyn .....	15
Figure 10: The memorials at Llanelli, Dale and Aberbanc.....	16
Figure 11: Allegorical sculptures at Aberystwyth and Pontrhydfendigaid .....	17
Figure 12: The Marros trilithon and the Taliaris pillar. ....	17
Figure 13: The Ammanford Park memorial gates, Llangloffan cemetery gates and Pumsaint gates to the Coronation Hall. ....	18
Figure 14: St Davids memorial garden. ....	19
Figure 15: Pontyberem Hall and Angle Hall .....	21
Figure 16: The Ffos Las memorial, Eglwysrwrw and St Dogmaels. ....	22
Figure 17: The memorials at Mathry and Talley.....	23
Figure 18: The Llanbadarn Fawr memorial.....	23
Figure 19: The Llanddewi Velfrey and Llanfarian memorials. ....	24
Figure 20: The memorials at Lampeter and Milford Haven. ....	24
Figure 21: The Dale, Blaenporth/Aberporth and Borth memorials. ....	25
Figure 22: The Pembrokeshire County Memorial at Haverfordwest showing the use of bronze and stone. ....	26
Figure 23: William Goscombe John's Carmarthen memorial and Mario Rutteli's Aberystwyth Tabernacle memorial.....	26
Figure 24: John Carter Coates's elegant lettering on the Pembroke Dock memorial, his Pencarreg memorial and the mason's name recorded on the Milford Haven Memorial...	27
Figure 25: The front and reverse of the Llanddewi Velfrey memorial and the inscription on the Pembroke Dock memorial. ....	28
Figure 26: One of the inscription panels on the Freshwater West memorial.....	29
Figure 27: The St Florence memorial. ....	29

## CRYNODEB

*Mae'r prosiect hwn yn archwilio etifeddiaeth archaeolegol y Rhyfel Byd Cyntaf yn siroedd Sir Benfro, Sir Gaerfyrddin a Cheredigion, ac mae'n edrych ar y thema Coffáu yn y fframwaith ymchwil a amlinellir yn Modern Military Matters. Mae hyn yn adeiladu ar y prosiectau cwmpasu blaenorol a gynhaliwyd gan Ymddiriedolaeth Archaeolegol Dyfed.*

*O fewn y thema hon, mae cofgolofnau yn cynrychioli'r etifeddiaeth ffisegol fwyaf eang - sy'n sefyll mewn nifer o leoliadau amlwg o fewn llawer o gymunedau lleol. Defnyddiwyd sawl ffurf i goffáu'r meirw yn y blynyddoedd ar ôl y rhyfel, o blaciau a llechi wedi eu gosod o fewn gweithleoedd ac addoldai, strwythurau cerrig sylweddol, i adeiladau a sefydliadau, neu barciau a gerddi. O fewn yr ystod hon, nid yw llechi, placiau neu osodiadau o fewn adeiladau wedi cael eu cynnwys yn yr astudiaeth hon, ond mae'r holl strwythurau, adeiladau, parciau neu erddi sy'n sefyll ar eu pen eu hunain wedi cael eu cofnodi. Yn y rhan fwyaf o achosion aethpwyd i ymweld â nhw a thynnwyd lluniau ohonynt.*

*Mae ymgysylltu â'r gymuned yn parhau i fod yn thema allweddol o'r prosiect canmlwyddiant gyda nifer cynyddol o grwpiau a chymdeithasau yn gofyn i ni gynnal sgysiau. Yn ogystal, mae grwpiau, aelodau o'r cyhoedd neu wirfoddolwyr sy'n gweithio'n rheolaidd â'r Ymddiriedolaeth, hefyd wedi cyfrannu llawer o gofnodion.*

*Mae'r asesiad hwn wedi arwain at 177 o gofnodion, sydd wedi cael eu creu neu eu diweddarau yn y Cofnod Amgylchedd Hanesyddol (HER). Roedd 49 yn gofnodion a fodolai eisoes sydd wedi cael eu gwella a'u diweddarau, ac mae 128 yn gofnodion newydd ar gyfer safleoedd nad oedd yn yr HER cynt.*

## SUMMARY

*This project investigates the archaeological legacy of the First World War on the counties of Pembrokeshire, Carmarthenshire and Ceredigion, and looks at the theme of Commemoration in the research framework set out in Modern Military Matters. This builds on the work of the previous scoping projects undertaken by the Dyfed Archaeological Trust.*

*Within this theme war memorials represent the most widespread physical legacy - standing in prominent locations within many local communities. The memorialisation of the dead in the post war years took many forms, from plaques and tablets mounted within places of work or worship, monumental masonry structures, to buildings and institutions, or parks and gardens. Within this range tablets, plaques, fixtures or fittings within buildings have not been included in this study, but all freestanding structures, buildings, parks or gardens have been recorded and in most cases visited and photographed.*

*Community engagement continues to be a key theme of the centenary project with increasing numbers of talks being requested by groups and societies. In addition many records have also been contributed by groups, members of the public or volunteers who work routinely with the Trust.*

*This assessment has resulted in **177** records which have been updated or created in the Historic Environment Record (HER). **49** were existing records which have been enhanced and updated and **128** are new records for sites not previously in the HER.*

## INTRODUCTION

This assessment forms part of an on-going project to assess the archaeological legacy from the First World War being carried out across Wales by all the Welsh Archaeological Trusts and funded by Cadw.

Over the centenary years different themes, as set out in the research agenda *Modern Military Matters* (Schofield 2004) are being addressed. These are:

- The Militarised Landscape
- Research, Development and Manufacturing
- Infrastructure and Support
- Operations
- Commemoration

Dyfed Archaeological Trust has assessed and reported on the first four themes; this report addressed the final theme, commemoration.

## Project Aims and Objectives

The overall **aims** of the centenary projects are:

- to record sites relating to the First World War on the Dyfed HER,
- to make recommendations for statutory protection for sites relating to the First World War,
- to engage local communities in recording sites relating to the First World War.

## Methodology

Building on the research already carried out in the scoping reports the following methodology was adopted:

- Visits to the local archives in Pembrokeshire and Ceredigion, Carmarthenshire Local Studies Library (Carmarthenshire Archives are currently closed).
- Local newspapers now available online have been searched for references to sites.
- Online resources have been searched for sources of information.
- Secondary sources, including books on local histories and articles.
- A number of individuals (see acknowledgements) have been instrumental in providing sources and information on sites in the region.
- Site records have been created as point data and validated for the HER, and where possible polygon data on GIS (MapInfo) has been created.
- GIS polygon data has been created to supplement the HER and to inform future heritage management advice.
- Site records have been updated within the HER and are accessible on the website Archwilio [www.archwilio.org.uk](http://www.archwilio.org.uk)
- References to sources have been listed within the bibliographies for individual site records within the HER.

Individual records of sites are referenced by a Primary Record Number (PRN) and presented in the gazetteer to the rear of this report.

## **Background**

The sites investigated in the period 2018-2019 fall into the thematic category of Commemoration as highlighted in *Modern Military Matters* (Schofield 2006), a research agenda for Conflict Archaeology which has been adopted by the Welsh Conflict Archaeology Advisory Panel (WelCAAP) in lieu of a specific Welsh Research Agenda.

Within Commemoration Modern Military Matters identified three sub-themes:

- War memorials and commemorative sites
- War cemeteries
- Military museums

This report concerns just war memorials and commemorative sites. There are no dedicated First World War cemeteries in south-west Wales and no First World War military museums.

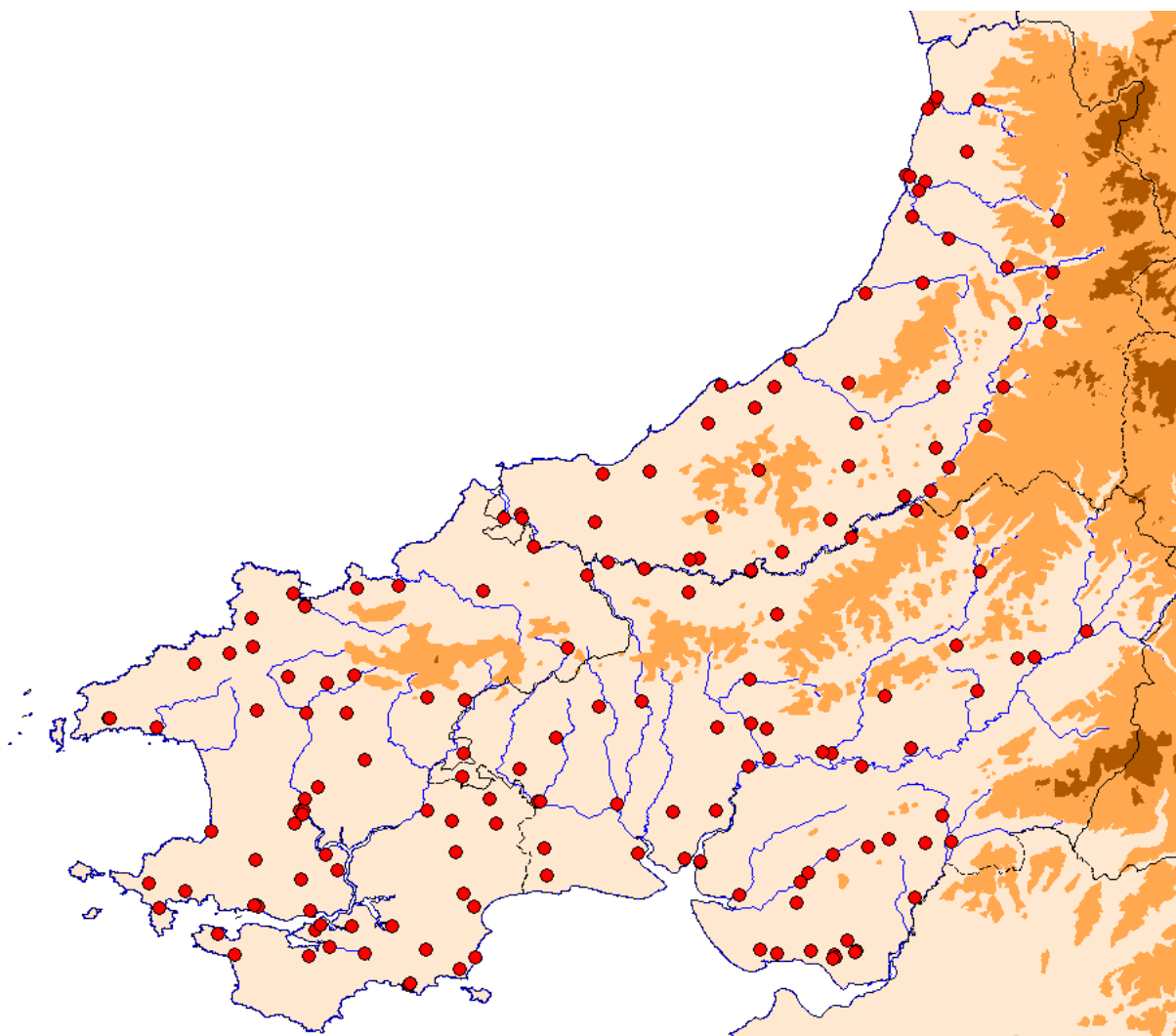
First World War memorials take many forms, with almost every community in Britain having a memorial or commemorative site. They include stone tablets, wooden panels and stained-glass windows in churches, chapels and other public and private buildings, gardens, gates, public architecture and sculpture, halls and other community buildings. This report only concerns itself with what may be termed freestanding structures, that is public architecture, sculpture, memorial halls, gates and gardens, and not with fixtures and fittings that are an element of a building, such as commemorative tablets and stained glass windows.

There is a considerable body of literature on war memorials across Britain and more specifically for Wales and it is not intended to repeat here what is said in those publications. Useful references include Awbery 2018, Bowdler 2018, Cadw 2014, Gaffney 1998 and Mason 2009. Several websites contain useful information on memorials, most prominent are the Imperial War Museum's War Memorials Register, the War Memorials Trust's War Memorials Online database, Swansea University's Welsh Memorials to the Great War and the West Wales War Memorial Project. All have some omissions - the West Wales War Memorial Project is the most comprehensive for this region - and all focus on the people commemorated and their stories rather than the physical monuments, which is the main subject of this report.

## **RESULTS**

### **Number of sites**

Schofield (2004) estimates that there about 50,000 war memorials in Britain of which over 8000 are freestanding. In south-west Wales there are approximately 500 memorials, of which this study has identified 177 as freestanding memorials. See Figure 1 for a distribution. Most towns and larger villages have a freestanding memorial. Some smaller communities also erected memorials to those who died and served in the First World War, but for many the cost was too great or the bereaved and other members of the community preferred more intimate forms of memorialisation such as commemorative panels in churches and chapels.



*Figure 1: Distribution of freestanding war memorials across Dyfed*

## **Memorial types**

Broadly memorials can be divided into utilitarian types, which have a use as well as a commemorative function, such as memorial halls, hospitals, gardens or parks, and monumental memorials such as freestanding structures, or tablets and fixtures or fittings which have been precluded from this survey. Overall figures for the three counties show that there are a total of 45 utilitarian memorials.

### ***Utilitarian Memorials***

Utilitarian Memorials were essentially functional in nature, they generally were bigger, more expensive projects which called for greater organisation and possibly a generous donation from a local council or benefactor.

Memorial halls	37
Hospital	3
Garden	3
Park	2
<b>Total</b>	<b>45</b>



### ***Monumental***

Monumental memorials take many and varied forms; often based on a style and tradition of structures common to graveyards and cemeteries of the late nineteenth and early twentieth centuries. They could often be erected by local stone masons, and were more economical, but also importantly offered an intimate place for bereaved families and communities to carry out ritual or private mourning.

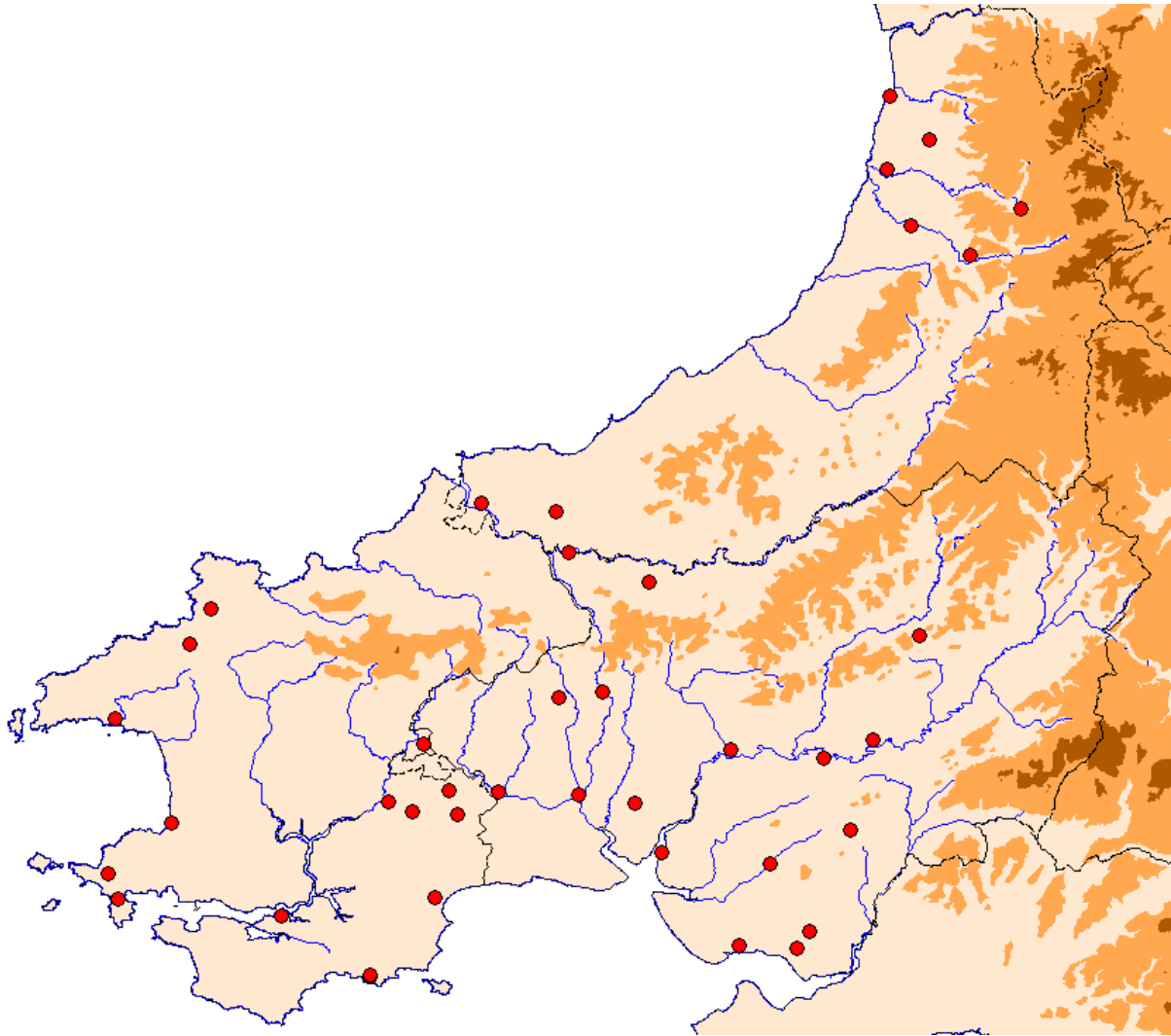
They can be further subdivided into the following types;

Cross	43
Sculpture	16
Pillar / column	15
Plaque	13
Obelisk	12
Monolith	8
Cenotaph	7
Gates	5
Urn	5
Allegory	4
Other	2
Vernacular	2
<b>Total</b>	<b>132</b>

Across the three counties there is some regional variation of memorial types. Celtic crosses are the most popular memorial type in Pembrokeshire (16%) and in Carmarthenshire (20%) whilst in Ceredigion memorial halls (34%) are by far the most widespread.

<b>Pembrokeshire</b>		<b>Carmarthenshire</b>		<b>Ceredigion</b>	
Celtic cross	11	Celtic cross	12	Memorial halls	16
Memorial halls	10	Memorial halls	11	Sculpture	7
Monolith	8	Sculpture	7	Celtic cross	4
Plaque	7	Pillar / column	6	Pillar / column	3
Pillar / column	6	Latin cross	6	Latin cross	3
Obelisk	5	Obelisk	4	Obelisk	3
Cenotaph	4	Plaque	3	Plaque	3
Latin cross	4	Gates	3	Allegory	3
Calvary	3	Cenotaph	2	Urn	2
Gates	2	Garden	2	Cenotaph	1
Hospital	2	Urn	2	Hospital	1
Sculpture	2	Vernacular	2	Park	1
Allegory	1	Other	1	Gates	0
Garden	1	Monolith	0	Garden	0
Park	1	Calvary	0	Vernacular	0
Urn	1	Hospital	0	Other	0
Other	1	Allegory	0	Monolith	0
Vernacular	0	Park	0	Calvary	0
<b>Total</b>	<b>69</b>	<b>Total</b>	<b>61</b>	<b>Total</b>	<b>47</b>

**Crosses.** Crosses are the most common form of free standing memorial, with **43** recorded. There are several basic forms: Latin crosses, wheel crosses, Celtic crosses, and variations on these.



*Figure 2: Distribution of cross type memorials*

Celtic crosses, that is with some form of interlace design are the most common cross type. One of the most impressive is at St Clears in Carmarthenshire (PRN 112711). This red Aberdeen granite monument stands to over 4m high and has panels of interlace carving on its shaft and which is topped by a wheel cross. The memorial at Lampeter Velfry in Pembrokeshire (PRN 59618) is a particular elegant example of a Celtic cross, as is the taller one at Llandissilio West (PRN 60508), also in Pembrokeshire.



*Figure 3: The Celtic crosses of St Clears (left), Lampeter Velfrey (centre) and Llandissilio West (right).*

Probably the most impressive and elegant Latin cross in the region stands in a small public garden in the centre of Narberth, Pembrokeshire (PRN 60367). It stands to c.6m in height. Llangynog memorial in Carmarthenshire (PRN 61467) is also impressive standing to over 4.5m high and located on country road junction. The two examples above are likely to have been designed, and perhaps made, outside the region, but there are many examples which were probably made by local craftsmen, such as the simple cross with a sword and regimental coat-of-arms carved on the shaft at Marloes in Pembrokeshire (PRN 113515), and a slightly more elaborate design at Talley, Carmarthenshire (PRN 112753), which has a sword draped with a wreath carved on the shaft.



*Figure 4: The Latin crosses of Narberth (left), Llangynog (centre) and Marloes (right).*

Wheel crosses are not common, but a good example stands on a small traffic island outside St Issells Church in Pembrokeshire (PRN 114198). In this example, which has affinities with Latin crosses, a small stone wheel cross sits on the top of a long, slender



shaft, the whole being c.5m high. While at Solva, Pembrokeshire (PRN 58707), a wheel cross is closer to Celtic crosses in overall design, though lacking interlace decoration.



*Figure 5: St Issells wheel cross*

**Calvaries.** These are not common, and not surprisingly two of the three identified examples stand in churchyards. John Coates Carter FRIBA designed the memorial (PRN 59234) to the men of Pembroke Dock who fell in the First World War. It consists of a red sandstone calvary standing on six tier stepped plinth in the corner of St John's churchyard. The churchyard example is at St Martin's Church in Haverfordwest (PRN 113522) consists of a bronze sculpture of Christ hanging on a wooden cross mounted on stone plinth on which the names of the fallen are recorded. John Coates Carter also designed the high calvary located on the hill overlooking Freshwater West Bay, Pembrokeshire (PRN 59465).



*Figure 6: The Pembroke Dock calvary (left) and the Freshwater West calvary (right).*

**Cenotaphs.** The largest and most elaborate are modelled (sometimes loosely) on the Edwin Lutyens cenotaph in Whitehall, often with embellishments and decorative elements that detract from the original elegant design. Particularly good examples can be found at Tenby, Pembrokeshire (PRN 59936), which stands in a small garden, Cardigan (PRN 57370) and Haverfordwest (PRN 60656). The latter has large bronze plaques recording the fallen from Pembrokeshire and First World War battles listed in bronze letters. A sculpture of a Welsh dragon sits on top of the monument. Llanboidy in Carmarthenshire (PRN 61408) and Fishguard in Pembrokeshire (PRN 114207) are just two examples of less elaborate cenotaphs.



*Figure 7: The cenotaphs at Tenby (left), Cardigan (centre) and Llanboidy (right).*

**Obelisks.** These are a common type of memorial with approximately **12** recorded in south-west Wales. The smaller ones are similar to monuments found in cemeteries across the region and thus were probably relatively inexpensive and could be constructed and erected by a local mason. Pink, Aberdeen, granite is the most common stone used for obelisks. Carew obelisk in Pembrokeshire (PRN 112485) is good example. It stands in a small walled enclosure outside the entrance to the castle. The obelisk at Llanybydder in Carmarthenshire (112276) is a striking example at over 5m in height and standing in a small walled plot in the centre of the village. An unusual example is The Belgian War Memorial in Milford Haven (PRN 59055) erected in gratitude of the people of Ostend, some of who were resident in the town during the First World War.





Figure 8: The Carew obelisk (left) and the Llanybydder obelisk (right)

**Pillars and columns.** These take a variety of forms and in general are more elaborate than obelisks. At Merlins Bridge outside Haverfordwest a square, cloth-draped, white marble column has a carving of broken guns and oak leaves on one face (PRN 60468). It stands in a small walled enclosure alongside a busy road. The maker was Edwards and Lewis of Haverfordwest. An identical memorial can be found a few miles away at Neyland (PRN 60459), presumably also made by Edwards and Lewis. A round grey-granite column sitting on a black granite plinth outside Clynderwen railway station in Carmarthenshire commemorates 'Our Boys' from the village and surrounding area who fell in the First World War (PRN 114199). The Newcastle Emlyn memorial consists of a c.2.5m high rough granite pillar with the names of the fallen inscribed on a polished panel (PRN 112493).



Figure 9: Clynderwen memorial (left), Merlin's Bridge (centre) and Newcastle Emlyn (right).

**Sculpture.** These were the most expensive type of memorial and only the larger towns could afford commissioned one-off sculptures, although examples of generic sculpture can be found across the region, even in small communities. William Goscombe John, a sculptor born in Cardiff, was renowned for his many war memorials across Britain and further afield and created three for towns in south-west Wales; Lampeter (PRN 25702), Carmarthen (PRN 142) and Llanelli (PRN 25781). At Milford Haven, Pembrokeshire (PRN

59054) life-size sculptures of three figures, an airman, a sailor and a soldier stand on a memorial on the sea-front. Generic sculptures of soldiers are found across the region, most common are variations on the mourning soldier, head down with rifle pointing to the ground, based on the figures on the London and North Western Railway War Memorial outside Euston Station. Examples are Blaenporth/Aberporth, Ceredigion (PRN 114202), Aberbanc, Ceredigion (PRN 57780), Llanwrda, Carmarthenshire (PRN 61225) and Llandovery, Carmarthenshire (PRN 61805). Other stock sculptures show a soldier at ease, such as the one that stands on top of a high column at Dale, Pembrokeshire (PRN 59658).



Figure 10: The memorials at Llanelli (left), Dale (centre) and Aberbanc (right).

**Allegory.** All the above depict soldiers, contrasting with the two memorials designed by Signor Mario Rutteli in Aberystwyth. These are allegorical sculptural monuments where such ideals as liberty, justice and freedom are expressed by a human form, most commonly a woman. The most imposing of these two stands on the promenade and consists of a c.15m high column on which stands the allegorical winged victory and at the base is a figure representing humanity (PRN 25195). The second, is of figure bringing news of victory (PRN 25250). It formerly stood outside the Tabernacle Chapel, but has been moved when the chapel was demolished and the site redeveloped, it now stands in a nearby location. At Pontrhydfendigaid, Ceredigion (PRN 58202) a stock sculpture of peace stands on a high pedestal. Surprisingly sculptures or depictions of Welsh dragons rarely appear on memorials. An exception is at the Pembrokeshire county memorial in Haverfordwest (PRN 60656) where a dragon stands on top of the cenotaph.





Figure 11: Allegorical sculptures at Aberystwyth and Pontrhydfendigaid

**Other freestanding memorials.** These can take the form of tablets built into a wall or plinth such as at Dinas Cross, Pembrokeshire (PRN 114206), or can be more idiosyncratic such as at Penrhynogoch, Ceredigion (PRN 112303) where a massive unshaped local quartz block is topped by a small stone cross, the whole surrounding by iron railings, and at Marros, Carmarthenshire (PRN 61361) where a trilithon of local gritstone stands on a stepped plinth. The inspiration for this is likely to have come from George Treherne an antiquary and member of the Inn and Out Club, a local archaeological society active in the years before and after the First World War. A pillar with a local hand-crafted appearance stands alongside a now busy road and commemorates the fallen from Taliaris, Carmarthenshire (PRN 60933) is a monument unique in the region.



Figure 12: The Marros trilithon and the Taliaris pillar.

**Gates.** These are not common. The best example is the iron gates, piers and railings at Ammanford Park, Carmarthenshire (PRN 60918). Other examples are on a smaller scale and consist of simple plaques mounted on gate pillars such as at Cilgerran, Pembrokeshire (PRN 114205), where the gates are the entrance to the medieval castle,

and on gate pillars to a small cemetery at Llangloffan, Pembrokeshire (PRN 114209). Some rather fine ornamental iron gates were erected at the entrance to Pumpsaint Coronation Hall in 1925 to commemorate the fallen of the community (PRN 60980).



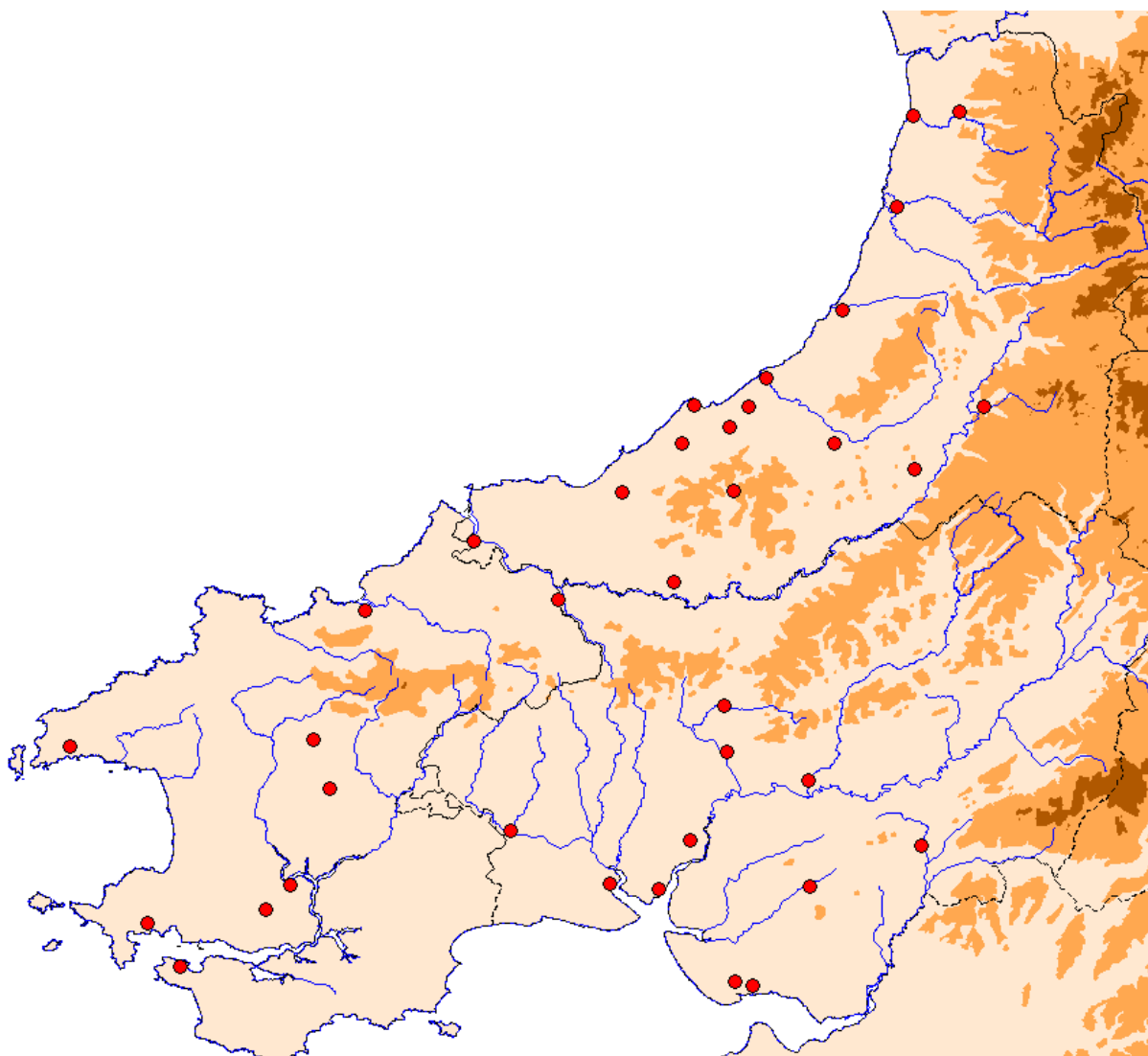
*Figure 13: The Ammanford Park memorial gates and the Llangloffan cemetery gates and below Pumpsaint gates to the Coronation Hall.*

**Gardens and Parks.** These are relatively rare with good examples being Llandysul Memorial Park, Ceredigion, where a memorial plaque (PRN 114924) was unveiled in 2016, and Pembroke Dock Memorial Park, Pembrokeshire where paths are laid out in the shape of a cross (PRN 117033). At St Davids a small memorial garden in the centre of the city commemorates the fallen of the First and Second World Wars as well as lifeboat men who have lost their lives (PRN 112710). In these three examples the names of the fallen are recorded on roles of honour located elsewhere in the community.



*Figure 14: St Davids memorial garden.*

**Halls.** A hall was a common alternative to some form of free-standing memorial, with the names of the fallen recorded on tablets mounted inside the building, or more rarely externally.



*Figure 15: Distribution of memorial halls*

Generally they are utilitarian, but there are exceptions such as at Pontyberem, Carmarthenshire (PRN 61124), and most have been modernised making them suitable for the community's current needs. Some, as at Laugharne, Carmarthenshire (PRN 112296) have been completely rebuilt. At Angle, Pembrokeshire (PRN 114194) the village hall was built in 1913 but was effectively transformed into a memorial hall by the addition of two granite tablets to the outside recording the men from the community who served in the First World War. At St Davids funds were raised in 1915 for a city hall, but it was not built until the 1920s and then had an attached memorial hall (PRN 112709). At St Dogmaels, Pembrokeshire (PRN 114204) the memorial hall was not opened until 1951 and commemorates the fallen from both World Wars.





*Figure 16: Pontyberem Hall (left) and Angle Hall (right).*

Some memorial halls are simple corrugated metal sheeted halls, such as that at Llangybi (PRN 112309) or Llanrhystud (PRN112306) where a modest tin hall is masked by a nicely detailed rendered front gable with a Diocletian window over the flat roofed entrance porch.



*Figure 17: Simple tin memorial halls such as Llangybi (left) and Llanrhystud (right)*

Other architectural designs include the Arts and Crafts hall at Pembrey (PRN 111343) built with a pan tile roof and mock Tudor timber framing. The hall was opened in 1933 and included a billiard room and a games room around a central Assembly hall.



*Figure 18: Pembrey Arts and Crafts style memorial hall.*

**Modern.** During the centenary of the First World War several communities that did not have a memorial erected one. These are generally much more modest than those put up in the immediate aftermath of the War, but nevertheless serve as focus for memorial services on Armistice Day. Examples can be found at Eglwyswrw churchyard, Pembrokeshire (PRN 114201) where a slate slab incised with a Welsh dragon was unveiled in 2014 and at Llanarthne, Carmarthenshire (PRN 114935) where granite cross standing immediately outside the churchyard was unveiled in 2018. A slightly more unusual memorial can be found at St Dogmaels, Pembrokeshire (PRN 114203) where a boulder with a ring-cross incised into one face has been erected on a two tier plinth. The design of the cross is based on an 8<sup>th</sup>-10<sup>th</sup> century stone found at St Dogmaels Abbey. A very usual modern memorial has been erected by the Woodland Trust at Ffos Las racecourse (PRN 114936). It consists of metal sculpture of a horse with a crouching soldier on its back.



Figure 19: The Ffos Las memorial (left), Eglwyswrw (right) and St Dogmaels (right).

### Locations of free-standing memorials

War memorials were meant to serve as a constant reminder of those who lost their lives during the First World War and so were usually positioned where members of the community would pass by them every day, or at least every week of their working lives. Less commonly they were located where travellers and visitors would see them.

Within a churchyard was a favoured location, particular where a church lay within the centre of a village. A prominent position was chosen, either where worshippers had to pass by the memorial on their way into the church, as at Talley, Carmarthenshire (PRN 112753) and Mathry, Pembrokeshire (PRN 112755), or where the memorial could be easily seen from the road, as at Marloes, Pembrokeshire (PRN113515) and Llanboidy, Carmarthenshire (PRN 61408).





*Figure 20: The memorials at Mathry (left) and Talley (right).*

Where location within a churchyard was not possible or not considered appropriate then a popular choice was to place the memorial on the roadside or at a road junction close to the church, as at Marros, Carmarthenshire (PRN 61361) and Llanbadarn Fawr, Ceredigion (PRN 58039). At Lampeter Velfrey, Pembrokeshire (PRN 59618) a semi-circular recess was created in the churchyard wall to accommodate a fine Celtic cross memorial ensuring that it was highly visible to all who passed by.



*Figure 21: The Llanbadarn Fawr memorial.*

Visibility was the key factor in deciding a location and so where the church was not the geographic focus of a community other locations were chosen, either in the centre of a town or hamlet, as at Narberth, Pembrokeshire (PRN 60367) and Penrhynogoch, Ceredigion (PRN 112303) or the side of a busy road or at a road junction, sometimes some distance from the heart of the community. There are numerous examples of these, and to give just a couple of examples: Llanddewi Velfrey, Pembrokeshire (PRN 47233) and Llanfarian, Ceredigion (PRN 112751).



*Figure 22: The Llanddewi Velfrey (left) and Llanfarian (right) memorials.*

Memorials commemorating large numbers of men, which normally means memorials in towns, were sometimes located in a specially built paved area, or fenced-off garden emphasising their importance and providing space to conduct ceremonies, such as at Tenby (PRN 59936), Lampeter (PRN 25702), and Milford Haven (PRN 59054) where the memorial is located on a wide paved area on the sea-front.



*Figure 23: The memorials at Lampeter (left) and Milford Haven (right).*

Memorials in other locations are relatively rare, but a handful stand in cemeteries. One example is the Aberporth/Blaenporth memorial, Ceredigion (PRN 114202) which stands in an isolated cemetery, the location possibly chosen as it is roughly mid-way between the two communities. The impressive memorial at Dale, Pembrokeshire (PRN 59658) also stands in a cemetery just outside the village. It is uncertain why this location was chosen, but it may be to accompany the memorial to the eight bodies that were washed up at Dale from the Japanese Ocean Liner SS Hirano Maru torpedoed off the Pembrokeshire Coast on 4 October 1918. Isolated memorials are rare, but examples are the cross at Borth, Ceredigion (PRN 25521) which stands in a prominent location on the sea cliffs above the village and the calvary at Freshwater West, Pembrokeshire (PRN 59465) which is in a very exposed location overlooking a beach. At Newcastle Emlyn, Carmarthenshire (PRN 112493) the memorial originally stood on the castle earthworks but was moved to a small walled-off area close to the parish church.





*Figure 24: The Dale (left), Blaenporth/Aberporth (centre) and Borth (right) memorials.*

### **Materials of free-standing memorials**

It is not surprising that the use of bronze is generally reserved for most expensive sculptured memorials, as at Carmarthen, Lampeter, Llanelli and Aberystwyth (PRNs 142, 25702, 25781, 25195, 25250), or for small plaques or tablets attached to stone monuments. The Pembrokeshire County memorial at Haverfordwest (PRN 60656) is unusual having several very large plaques attached to the stone cenotaph.

Stone is ubiquitous, but the type used varies considerably. Stone sculpture is invariably in a pure white stone, probably Italian marble, but this cannot be confirmed without a geological survey. The calvary at Pembroke Dock (PRN 59234) is unusual (at least for the region) being of red sandstone. Granite is by far the most common stone used, with many memorials using more than one type of stone. It was probably chosen on account of its resistance to weathering and its common usage at the time by local monumental masons. Aberdeen granite, called pink granite or red granite, is used in numerous memorials, but whether this was because its red colour had particular significance or whether it was simply a popular stone for use in funeral monuments at the time has not been determined. The large obelisk at Llanybydder (PRN 112276) is a striking example of the use of Aberdeen granite.

The use of local stone is mainly confined to the more mundane elements of memorials such as steps, plinths and surrounding walls. There are however some notable exceptions such as the three large blocks of gritstone used in the Marros, Carmarthenshire trilithon (PRN 61361), what appears to be gritstone (perhaps quarried from outcrops a several kilometres to the south) in the unusual Taliaris, Camarthenshire pillar (PRN 60933), and the massive quartz boulder at Penrhyncoch, Ceredigion (PRN 112303). It has been suggested that the latter was a prehistoric standing stone removed from its original position and placed on a plinth in the centre of the village. Local stone was not favoured for monuments that had carved or sculptured elements, but one exception is Llanddewi Velfry, Pembrokeshire (PRN 47233) where a Celtic cross is carved from sedimentary rock, possibly of local origin.



*Figure 25: The Pembrokeshire County Memorial at Haverfordwest showing the use of bronze and stone.*

### **Artists and masons of free standing memorials**

Apart from the works of the sculptors William Goscombe John (Carmarthen, Lampeter and Llanelli memorials) and Signor Mario Rutteli (Aberystwyth memorials), and some of the other more costly memorial such as the Tenby cenotaph (PRN 59936) – makers Mr J Howard Morgan FRIBA – and the makers of the Milford Haven memorial (PRN 59054) - Evan Jones, J C Ward and Admiral Charles Dare – the majority of monuments in the region were made by local masons, most of them anonymous.



*Figure 26: William Goscombe John's Carmarthen memorial (left) and Mario Rutteli's Aberystwyth Tabernacle memorial.*

This is not always the case. In some examples the name of maker is inscribed on the memorial and occasionally contemporary newspaper reports on unveiling ceremonies record the makers' names. For example, one maker known to have been commissioned for several monuments is E J Williams; his name is recorded on the Llanybydder obelisk (PRN 112276) – 'E J Williams Sculpture Llanybyther' and on other memorials in the region, as is E Jones also of Llanybydder (one of the makers of the Milford Haven memorial). Where a piece of sculpture forms part of the memorial it would seem to have been general practice to buy it in the case of a stock item, or specially commission a piece, and then employ a local mason to erect it on a plinth or pedestal as at Pencarreg, Carmarthenshire (PRN 43374) where the maker is recorded as John Coates Carter FRIBA and the mason W Davies & Son Lampeter. This memorial is one of John Coates Carter's lesser known works. Two other works by him are recorded in the region – the calvaries at Pembroke Dock (PRN 59234) and Freshwater West (PRN 59465), both in Pembrokeshire.



*Figure 27: John Carter Coates's elegant lettering on the Pembroke Dock memorial (left), his Pencarreg memorial (centre) and the mason's name recorded on the Milford Haven Memorial.*

### **The language of inscriptions**

An analysis of the inscriptions on memorials is a fascinating topic but anything other than general observations is beyond the scope of this project. Much has been written on the subject, and for south-west Wales Mason (2009, Chapter 11) has addressed the topic as well as Awbery (2017, 2018).

The type and range of memorials in the region mirrors those found across Britain and therefore whether English or Welsh or a combination of both languages is used, and how language is used, is one of the few pieces of evidence for an expression of local, regional and Welsh identity in the years following the First World War. Without much prior knowledge it might be assumed that English would be the dominant language in the more Anglicised areas of south Pembrokeshire (and this is generally the case) with Welsh more common in stronger Welsh speaking areas north Pembrokeshire, northern Carmarthenshire and Ceredigion. But the pattern is much more complex. A fairly common feature is English used as the main language but with a Welsh epitaph, as at Llanddewi Velfrey, Pembrokeshire (PRN 47233). Interestingly this memorial records the names of the farms or houses of the fallen, a feature only noted on memorials in Welsh-



speaking areas and an indication of the importance placed on place of birth in these agricultural communities. In some examples it is not easy to understand the choice of language. For instance at Blaenporth/Aberporth Ceredigion (PRN 114202) the memorial stands in a cemetery called 'Claddfa Hen Capel' in which the gravestones have Welsh only inscriptions but the memorial inscription is English only. In south Pembrokeshire English identity was so strong – and perhaps reinforced by a strong military presence – that not only was English only used on memorials but at Pembroke and Pembroke Dock 'England' rather than Wales is the name of the country appearing on the inscription.



Figure 28: The front and reverse of the Llanddewi Velfrey memorial (left and centre) and the inscription on the Pembroke Dock memorial (right).

## Date of erection

In common with memorials across Britain the early years of the 1920s witnessed a flurry of activity with the formation of local and regional committees and the commissioning and erection of monuments. Most monumental memorials were in place by 1925, though often memorial halls took longer to see completion. The centenary of the First World War witnessed a second period of memorialisation, with as noted above some communities that had no focus for commemoration ceremonies erecting a memorial to the fallen.

## Condition

First World War memorials are the best cared for and best maintained class of monument recorded on the HER. Field visits rarely recorded any vandalism, evidence of neglect or lack of maintenance. Some minor wear and tear was noted, such as the bayonet broken off from the sculpture of the soldier at Pencarreg (PRN 43374) and paint flaking off from the gun-stock of the gun held by the figure of a soldier at Blaenporth/Aberporth (PRN 114202). The lettering on memorials is still legible and shows little sign of weathering. The reason for this is the common use of hard-wearing granite and the likelihood that some refreshment has taken place over past hundred years. The memorial to have suffered most from the elements is the calvary designed by John Coates Carter FRIBA, located on a hill overlooking Freshwater West, Pembrokeshire

(PRN 59465) and exposed to the westerly Atlantic gales. The inscriptions are becoming illegible. At Mathry, Pembrokeshire (PRN 112755) part of the inscription is difficult to read on the most exposed side of the memorial.



*Figure 29: One of the inscription panels on the Freshwater West memorial.*

The only example where thoughtless development has affected a memorial is at St Florence, Pembrokeshire (PRN 114197). Here when an Aberdeen granite obelisk had been erected a section of the churchyard wall had been removed and replaced by railings to allow the memorial to be seen from outside the cemetery. This view has now been blocked by a modern garage.



*Figure 30: The St Florence memorial.*

All the memorial halls visited remain in use, though some suffer from lack of maintenance as clearly the costs of maintaining a building are somewhat more onerous on a small community. Many have seen improvements and updating, the Art Deco hall at Llansteffan (PRN 112297) was visited just as its original windows were being replaced, or as mentioned above at Laugharne (PRN 112296), have been completely rebuilt to fulfil a community's needs. This has meant that those that do retain their original fabric, such as the hall at Llanyby (PRN 112309), are one of a few surviving examples of its type.

## **Designation of free-standing monuments**

Figurative memorials are designated listed buildings as are large cenotaphs, high Latin crosses and ornate Celtic crosses. There are some exceptions, such as the Blaenporth/Aberporth memorial. Almost all churches in the region are designated listed buildings and thus any memorial in a churchyard is also listed as it lies within the church's curtilage. There are anomalies, with some memorials in churchyards being listed separately, some not. Generally speaking, the larger more impressive memorials are listed, the smaller ones not. It is recommended that all free-standing First World War memorials should be designated listed buildings unless they consist of just a plaque or tablet, or if they are modern.

## **CONCLUSION**

War memorials are the most tangible and physical legacy of the First World War, being so commonplace in almost every town and village, it is easy to accept their existence as part of the landscape. However they came out of a collective grief, from the response to a decision not to return the bodies of the dead for burial at home, and so communities and families were left without a body to bury or a place to mourn the loss of their loved one.

A wave of memorialisation to the dead swept the country and thousands of monuments, and hundreds across Dyfed, were constructed. Despite their numbers, each one is unique, erected by individual communities responding to their grief, and the result of decisions made at a local level.

This was not a national initiative, communities were already considering erecting memorials to the dead as the war went on. However, there were efforts to influence the process and in 1919 the Royal Academy War Memorials Committee stated in their annual report,

'that the most satisfactory way of guiding promoters of Memorials in the choice of suitable designs would be to hold an Exhibition of approved designs as soon as possible'

This was held in October 1919 and over 5000 paying visitors attended. The catalogue (unfortunately without illustrations) itemises such exhibits as a 'Model of Design for a War Memorial for the market-place of a large town' and also includes models of memorials already commissioned.

In the list of exhibitors, none of the noted artists or architects who went on to provide pieces of work in southwest Wales - John Coates Carter, William Goscombe John or Mario Rutelli - are represented, suggesting that these Wales based artists were not in the market for war memorials at that time.

There were, of course, outside influences to the memorials we see in southwest Wales - the most obvious being the construction of Edwin Lutyens Cenotaph at Whitehall, initially built as a temporary wooden structure in 1919, it was immediately commissioned as a permanent monument and constructed in 1920 ready for the internment of the Unknown Soldier in Westminster Abbey. We see the emulation of this national monument, albeit on a smaller scale, in the cenotaphs at Cardigan, Tenby and Llanboidy. These are notable for their lack of religious iconography; drawing on classical architecture and motifs such as laurel wreaths symbolising victory and peace.

Other types of memorials draw more on the local traditions of monumental masonry similar to those found in cemeteries across the region and thus were probably relatively inexpensive and could be constructed and erected by a local mason.

As such each memorial is unique, representing its own local community and how they wished to mourn and commemorate their dead. Each has its own story to tell and while

it has not been possible to research each memorial's story, the work carried out here is preserved within the HER providing a comprehensive record of the commemoration of the First World War at its centenary.

## **Acknowledgements**

The Trust would like to gratefully acknowledge the funding of the project by Cadw, specifically the support of Jon Berry, Senior Inspector. In addition records of memorials in north Ceredigion have been carried out by a group of MIND volunteers from Aberystwyth, under the guidance of Will Rathouse. Rebecca Davey, a work placement student from Gorseinon college also worked on this project, undertaking practical recording work, desk-based HER enhancement and also putting together an exhibition for the Archaeology Day held in Llanelli in March 2019. A number of individuals have also submitted photographs and information on their local memorials and these have been credited in the individual record descriptions.

## **BIBLIOGRAPHY**

Appleby, C, Cocroft, W and Schofield J, 2015. The Home Front in Britain 1914-1918, an Archaeological Handbook.

Awbery, G M, 2017. The language of remembrance: Welsh and English on First World War war memorials, in Folk Life

Awbery, G M, 2018 First World War memorials in Carmarthenshire: the language of remembrance, in Carmarthenshire Antiquary Vol 54

Bowdler, R, 2018. Remembering the dead, in W Cocroft and P Stamper (eds), *Legacies of the First World War*, Swindon: Historic England, 199-212.

Cadw, 2014. *Caring for War Memorials in Wales*, Cardiff: Cadw.

Gaffney, A, 1998. *Aftermath. Remembering the Great War in Wales*, Cardiff: University of Wales Press.

Mason, L, 2009. Communities in mourning: commemoration and memorial construction in west Wales following the Great War, unpublished PhD thesis University of Wales, Lampeter.

Royal Academy of Arts War Memorials Exhibition 1919, 20<sup>th</sup> October to 29 November 1919.

Schofield, J, 2004. *Modern Military Matters*, York: Council for British Archaeology.

## **Websites**

Imperial War Museum's War Memorials Register <https://www.iwm.org.uk/memorials>

War Memorials Trust database <https://www.warmemorialsonline.org.uk/>

Swansea University's Welsh Memorials to the Great War <http://war-memorials.swan.ac.uk/>

West Wales War Memorial Project <https://www.wwwwmp.co.uk/>



## GAZETTEER

**PRN 142 NAME** PRIORY STREET, CARMARTHEN

**TYPE** WAR MEMORIAL **PERIOD** MODERN

**NGR** SN4164720316 **COMMUNITY** Carmarthen

**CONDITION** INTACT **STATUS** *Listed Building 82207 II* **EVIDENCE** EXTANT STRUCTURE

### SUMMARY

War memorial to those from Carmarthenshire who fell during First World War, and also to those of the Second World War and the Korean War. It is a bronze statue of a soldier standing on a high octagonal plinth. Sculpture: W. Goscombe John RA.

### DESCRIPTION

This war memorial consists of a bronze statue of a hat-less soldier mounted on a high octagonal stone plinth set within a semi-circular stone bench in front of Carmarthen Infirmary. It is c.4.5m high in total. The front of the plinth records the men of Carmarthenshire who fell in the Great War 1914-1918, the rear the 1910 nurses and officers and men of all ranks from the county, the west side those who fell in the Second World War and the east side the fallen in Korea 1950-1953. The commemorative text is written in English, "TO THE IMMORTAL MEMORY OF THE MEN OF CARMARTHENSHIRE WHO FELL IN THE GREAT WAR 1914-1918" "ALSO TO THE SACRED MEMORY OF ALL THOSE FROM CARMARTHENSHIRE WHO FELL IN THE SECOND WORLD WAR 1939-1945" "REMEMBER THE FALLEN KOREA 1950-1953" "TO ONE THOUSAND NINE HUNDRED AND TEN NURSES AND OFFICERS AND MEN OF ALL RANKS FROM THIS COUNTY" and around the bottom plinth are the Welsh phrases, "MEWN ANGHOF NI CHANT FOD", "ER COF AM Y RHAI A GOLLWYD" "CYFAREDD COF YW HIRAETH" on three sides. The sculpture was W. Goscombe John RA. The memorial was unveiled on 4 September 1924. K Murphy June 2018. A memorial to the 1914-18 war, also later used as a memorial to the 1939-45 war. Consists of a statue on a pedestal with a curving stone bench surround, built and erected in 1923-4.(PP 25/5/04 from Cadw listed buildings info).

**SOURCES** Mm Database Cadw Listed Buildings database, no 82207 Access database, SMR

Pm Desc Text Lodwick,J & V 1972 Story of Carmarthen p.189

### OTHER SOURCES

Report A. PYPER 2015 FIRST WORLD WAR: THE MILITARISED LANDSCAPE INTERIM REPORT YEAR 1

---

**PRN 6602 NAME** CARDIGAN BENEDICTINE PRIORY; CARDIGAN AND DISTRICT MEMORIAL HOSPITAL

**TYPE** HOSPITAL , Mansion , Priory **PERIOD** Medieval , MODERN , POST MEDIEVAL

**NGR** SN18144605 **COMMUNITY** Cardigan

**CONDITION** Intact **STATUS** *None recorded* **EVIDENCE** Building

### SUMMARY

Site of medieval Benedictine priory. The site is now occupied by Cardigan and District Memorial hospital.

### DESCRIPTION

The beginnings of Cardigan Priory are obscure, and the exact time of its foundation cannot be known with certainty. It is first heard of after Rhys ap Gruffudd, Prince of South Wales, had recovered Cardigan from the Normans in 1165. A charter given by him, probably soon after that date, grants and confirms to the great Benedictine abbey of St Peter, Chertsey, Surrey "the cell of Cardigan with all its appurtenances." The

priory, with its church of St. Mary of Cardigan, and the chapel of St. Peter in the castle, were already in existence at that time. Cardigan was always a very small priory and it probably never housed more than a few monks. On the eve of the Dissolution the priory was a centre of pilgrimage, famed for the Burning Taper of Our Lady. However, the Dissolution of the Monasteries saw Chertsey forced to "surrender" its possessions to the king on July 6th, 1537. A brief respite ensued when Henry VIII re-founded Bisham as a Benedictine Abbey on December 18th, 1537, and the abbot of Chertsey and his monks were established there. This meant that the priory of Cardigan also continued under the new house. But by the following year both Bisham and Cardigan had to be "surrendered" anew on June 19th, 1538. Just a week later an order was issued to remove the prior and to confiscate the priory and its belongings. Subsequently the priory fell into private hands and a succession of large houses were built on the site. An earlier 17th century house was the residence of Catherine Phillips 1631-1664. In 1805 a large country house was designed by John Nash and built by John Bowes. This building was essentially rectangular in shape and was enlarged in 1922 when it became Cardigan hospital that stands today in 2012. No remains are left above ground of the former Benedictine priory. F Murphy 2012 based on many sources

**SOURCES** Mm List RCAHM 1976 10c,CD

Ph Desc Text Meyrick,SR 1810 History of Cardiganshire p.171

Ph Mention Laws,E 1888 Little England Beyond Wales p.355

Ph Mention Lewis,S 1833 Topog.Dict.Wales Cardigan

**OTHER SOURCES**

Descriptive Text Lester Mason 2009 COMMUNITIES IN MOURNING: COMMEMORATION AND MEMORIAL CONSTRUCTION IN WEST WALES FOLLOWING THE GREAT WAR

Unpublished PhD Thesis

Report Page, M and Murphy, F 2012 Later Medieval and Early Post-Medieval Threat Related Assessment Work 2012: Monasteries

---

**PRN 20375 NAME** BURRY PORT

**TYPE** Commemorative Monument , WAR MEMORIAL **PERIOD** MODERN , POST MEDIEVAL

**NGR** SN44640089 **COMMUNITY** Cefn Sidan

**CONDITION** Not Known **STATUS** *None recorded* **EVIDENCE** Structure

**SUMMARY**

A war memorial originally erected to commemorate lives lost during the First World War.

**DESCRIPTION**

The Granite monument which lies within a memorial garden adjacent to the Memorial Hall. Consists of a plinth mounted with a plain cross containing text. The monument was unveiled by the Burry Port and Pembrey Branch of the Royal British Legion in 2001 (date from IWM record 36611). The west face and the three remaining cardinal faces contain the names of those who had fallen in the 1914-1918 and 1939-1945 World Wars. RJones 2018

**SOURCES** Pm Map OS 1969 SN40SE

**OTHER SOURCES**

---

**PRN 20376 NAME** BURRY PORT

**TYPE** Dwelling , MEMORIAL HALL **PERIOD** MODERN

**NGR** SN4468500894 **COMMUNITY** Cefn Sidan

**CONDITION** Not Known **STATUS** *None recorded* **EVIDENCE** Building

## SUMMARY

A substantial two storey brick building situated to the North of the Memorial Gardens. R Jones 2018

## DESCRIPTION

**SOURCES** Pm Map OS 1969 SN40SE

## OTHER SOURCES

---

**PRN** 25195 **NAME** NEW PROMENADE

**TYPE** Commemorative Monument , WAR MEMORIAL **PERIOD** MODERN , POST MEDIEVAL

**NGR** SN5788081600 **COMMUNITY** Aberystwyth

**CONDITION** Intact **STATUS** *Listed Building 10314 II* **EVIDENCE** Structure

## SUMMARY

A Free-standing Allegory column commemorating the men and women of Aberystwyth, Ceredigion situated near the castle for those who served in the Second World War. It is a bronze statue of a woman bearing a laurel wreath. There has been some vandalism on the memorial. R.Davey based on W.Rathouse 2018

## DESCRIPTION

**SOURCES** Pm Desc Text CADW 1987 BSAHI Aberystwyth p.62

Pm Desc Text Cambrian News 1979 07:12:1979

Pm Desc Text Welsh Gazette 1923 20:09:1923

## OTHER SOURCES

Report Rathouse, W. 2017 Archaeology For Mental Health : War Memorials Survey : Project Report

---

**PRN** 25250 **NAME** TABERNACLE CHAPEL

**TYPE** WAR MEMORIAL **PERIOD** MODERN

**NGR** SN5831381454 **COMMUNITY** Aberystwyth

**CONDITION** Intact **STATUS** *Listed Building 10376 II* **EVIDENCE** Structure

## SUMMARY

A war memorial erected to commemorate lives lost during the First World War.

## DESCRIPTION

Allegory statue commemorating the First and Second World Wars, listed because it is an especially, 'fine example' of a small war memorial. Made in bronze it is a replica of the seal of the 'Calvanistic Methodist connexion'; winged figure of Victory stands with one leg on a globe inscribed with the names of the fallen of the First World War. Marble plinth with Second World War memorial tablet; rests on slate platform.' Once located in the grounds of the Tabernacle chapel, which was demolished following a fire, it now lies within a site being developed for flats. A.Pyper from the listing description 2018.

**SOURCES** Pm Desc Text CADW 1987 BSAHI Aberystwyth p.81

Pm Desc Text Cambrian News 1979 7:12:1979

## OTHER SOURCES

**PRN 25521 NAME** BORTH

**TYPE** WAR MEMORIAL **PERIOD** MODERN

**NGR** SN6017188524 **COMMUNITY** Borth

**CONDITION** Intact **STATUS** *Listed Building 19155 II, Site of Special Scientific Interest* **EVIDENCE** Structure

### SUMMARY

A memorial dedicated to soldiers of World War I.

### DESCRIPTION

Borth War Memorial is dedicated to the soldiers of World War I and situated about 100 metres up the hill from the Western end of Ffordd Y Fullfurn on a cliff-top overlooking the sea, including a roll of honour. It was constructed as a High Cross made of stone. The memorial is described as having been damaged by a thunderbolt on March 21st 1984. Found during two visits to the memorial were beach pebbles featuring a poppy, a daffodil inscribed with 'Nan RIP'. R.Davey based on W.Rathouse 2018

**SOURCES** Mm Desc Text Sambrook,P & Williams,G 1996 Cardigan Bay Coastal survey SMR Library

Pm Desc Text Ceredigion District Council Ceredigion's Coastal Heritage p.40-41,Illustration

### OTHER SOURCES

Report Rathouse, W. 2017 Archaeology For Mental Health : War Memorials Survey : Project Report

---

**PRN 25702 NAME** LAMPETER

**TYPE** WAR MEMORIAL **PERIOD** MODERN

**NGR** SN5787548383 **COMMUNITY** Lampeter

**CONDITION** INTACT **STATUS** *Listed Building 10425 II* **EVIDENCE** STRUCTURE

### SUMMARY

War memorial to the 42 men of Lampeter and of Nurse Richards who died in the First World War. Also of the 22 men who died in the Second World War. The memorial is a bronze statue of a soldier by W Goscombe John RA on a square granite plinth. The memorial stands in a small garden surrounded by walls and railings.

### DESCRIPTION

A bronze statue of a soldier with a slung rifle with one foot resting on rock by W Goscombe John RA exhibited at the Royal Academy as 'The Victor'. The statue stands on a square granite plinth resting on rough stone block. Total height 4.5m. The names of the 42 men of Lampeter and of Nurse Richards who died in the First World War are inscribed on the plinth. The memorial was unveiled on 14 October 1921. The names of the 22 men who died in the Second World War are inscribed on a separate tablet. The memorial is located in triangular garden surrounded by wall and railings on a road junction in the centre of Lampeter. K Murphy June 2018. War Memorial, comprises of bronze figure on polished granite plinth. Inscriptions to WWI and II. Figure inscribed with artists W Goscombe-John RA 1921 based on UWL field report RJ

**SOURCES** Pm Desc Text CADW 1992 BSAHI,Lampeter p2

Pm Desc Text Davies,DE 1927 Guide to Lampeter

### OTHER SOURCES

---

**PRN 25757 NAME** ALL SAINTS CHURCH  
**TYPE** Commemorative Monument **PERIOD** MODERN  
**NGR** SN5056300699 **COMMUNITY** Llanelli  
**CONDITION** Intact **STATUS** *Listed Building 11913 II* **EVIDENCE** Structure

**SUMMARY**

Circa 1920 War Memorial in forms of granite Celtic Cross with interlace decoration. CADW 1992.

**DESCRIPTION**

A large granite monument with a Celtic Cross design containing interlaced knot-work design. Located on a platform with two granite steps beneath surrounded by 8 obelisk style bollards c. 900mm in height for chain link fencing. Monument contains an is inscribed panel to the front. Unable to make more detailed description as access to church unavailable. Description in part from War Memorials Register and site visit by author. R.Jones 2018

**SOURCES** Mm Note CADW 1992 SRF  
Pm Desc Text CADW 1992 BSAHI,Llanelli p23  
**OTHER SOURCES**

---

**PRN 25781 NAME** LLANELLI  
**TYPE** Commemorative Monument , WAR MEMORIAL **PERIOD** MODERN  
**NGR** SN5047500366 **COMMUNITY** Llanelli  
**CONDITION** Moved **STATUS** *Listed Building 11964 II* **EVIDENCE** Structure

**SUMMARY**

1923 War Memorial to dead of Great War; bronze sculpture by W. Goscombe John set against grey granite cenotaph.... originally sited opposite Town Hall but later moved for road widening. CADW 1992.

**DESCRIPTION**

This location also contains monuments to other conflicts. To the West a granite cenotaph style monument to the 1939-45 conflict (WWII). Another located to the east of the WW1 monument to those who fell in successive conflicts namely Palestine, Korea, Cypress, Malaya, Falklands, Northern Ireland, Iraq and Afghanistan. Smaller commemorative stones represent Burma, Royal Air force Association, Welsh Guards, and individuals R.Jones 2018

**SOURCES** Mm Note CADW 1992 SRF  
Pm Desc Text CADW 1992 BSAHI,Llanelli p54  
Pm Desc Text Hughes,G(ed) 1985 Looking Around Llanelli p174-5  
**OTHER SOURCES**

---

**PRN 43374 NAME** PENCARREG  
**TYPE** War Memorial **PERIOD** MODERN  
**NGR** SN5896246803 **COMMUNITY** Pencarreg  
**CONDITION** MOVED, Restored **STATUS** *Listed Building 81236 II* **EVIDENCE** MOVED STRUCTURE, Structure

**SUMMARY**

War memorial to those from Pencarreg Parish who fell in the First World War, with names added of the fallen in the Second World War and in Northern Ireland. It is a white stone statue of a soldier standing on square plinth located in a small garden. It was moved to its present position in the mid-1980s.

#### DESCRIPTION

War memorial of a sculptured life-size figure of a soldier at the ready in a white stone (marble or Portland Stone?) on top of a square stone plinth. The upper and lower elements of the plinth are in a grey stone, the central section onto which the names are inscribed is red granite. The memorial commemorates 11 men who fell in the First World War from Pencarreg Parish. The names of three men who died during the Second World War have been added on a separate tablet at the foot of the front of the plinth and the name of one man who was killed in Northern Ireland is inscribed on a tablet on the side of the memorial. The whole stands to approximately 3m high. The maker was John Coates Carter FRIBA. The mason name 'W Davies & Son Lampeter' is inscribed on the foot of the plinth. It was unveiled in 1921. It stands in a small garden alongside a main road. It was moved to this location in the mid-1980s. K Murphy July 2018. The memorial was moved to present location c. 1980's and consists of statue of soldier with rifle, name plaques. Based on UWL 2001 project RJ

**SOURCES** Mm Desc Text UWL 2001 DRF for PRN

#### OTHER SOURCES

---

**PRN** 47233 **NAME** LLANDDEWI VELFREY

**TYPE** War Memorial **PERIOD** Modern

**NGR** SN1476516897 **COMMUNITY** Llanddewi Velfrey

**CONDITION** INTACT **STATUS** *Listed Building 18983 II* **EVIDENCE** EXTANT  
STRUCTURE

#### SUMMARY

A war memorial in the form of a Celtic cross to the seven men of Llanddewi Velfrey who died in the First World War.

#### DESCRIPTION

The memorial is in the form of a Celtic cross carved from a sedimentary rock. It is c.2.5m high. The names of the seven who died during the First World War from the parish of Llanddewi Velfrey are inscribed on a panel on the face of the shaft with Celtic knot-work above and below. The cross stands on a stone plinth and is surrounded by low stone pillars linked by chains. The memorial stands alongside the A40 main road. K Murphy June 2018.

#### SOURCES

#### OTHER SOURCES

---

**PRN** 57370 **NAME** CARDIGAN

**TYPE** WAR MEMORIAL **PERIOD** MODERN

**NGR** SN1811546466 **COMMUNITY** Cardigan

**CONDITION** INTACT, Not Known **STATUS** *Listed Building 10497 II* **EVIDENCE** Building,  
STRUCTURE

#### SUMMARY

War memorial in the form of a cenotaph to the 91 men from Cardigan who died in the First World War and the 48 who died in the Second World War. It is of white granite with

the names on a bronze plaque. It is located in a small garden.

### DESCRIPTION

War memorial in the form of a cenotaph, modelled on the one in Whitehall, to the 91 men from Cardigan who died in the First World War and the 48 who died in the Second World War. It is constructed from white granite standing on a two-step stone plinth and stands c.5m high. The names of those who died are cast on a bronze plaque on the front face of the memorial. It stands in a small garden surrounded by a low chain fence at the south end of Victoria Gardens at a junction of two roads. It's makers were Mr Boadle (local surveyor and D J Jenkins (mason). It was unveiled on 29 August 1923. It is a listed building grade II. K Murphy September 2018.

### SOURCES

#### OTHER SOURCES

---

**PRN** 57780 **NAME** ABERBANC

**TYPE** War Memorial **PERIOD** MODERN

**NGR** SN3562341764 **COMMUNITY** Llandyfriog

**CONDITION** INTACT, Not Known **STATUS** *Listed Building 17597 II* **EVIDENCE** Building, STRUCTURE

### SUMMARY

War memorial to the 23 men from Aberbanc who fell in the First World War with the names of five who died in the Second World War added. It is a life-size white marble sculpture on a black granite square column on a stone plinth. It is located in a prominent position at a road junction.

### DESCRIPTION

War memorial to the 23 men from Aberbanc who fell in the First World War with the names of five who died in the Second World War added. It is a life-size white marble sculpture of a soldier holding a rifle with the barrel pointing down. It stands on a black granite square column which rests on a stone plinth surrounded by low iron railings. The inscriptions are on the faces of the granite column. It is located on a large stone-built plinth at a road junction. It was unveiled on 23 September 1923. K Murphy October 2018. Grade II listed war memorial

### SOURCES

#### OTHER SOURCES

---

**PRN** 57911 **NAME** LLANDYGWYDD

**TYPE** War Memorial **PERIOD** MODERN

**NGR** SN2573145637 **COMMUNITY** Beulah

**CONDITION** Not Known **STATUS** *Listed Building 17965 II* **EVIDENCE** Building

### SUMMARY

Grade II listed war memorial

### DESCRIPTION

A limestone Celtic cross set on 3 hexagonal steps. A slate tablet is inscribed with the names of 25 men from the parish who lost their lives in the First World War. A Pyper based on the Cadw listing description.

### SOURCES

## OTHER SOURCES

---

**PRN** 57944 **NAME** DREFACH

**TYPE** War Memorial **PERIOD** MODERN

**NGR** SN5019145869 **COMMUNITY** Llanwenog

**CONDITION** Not Known **STATUS** *Listed Building 18371 II* **EVIDENCE** Building

### SUMMARY

Grade II listed war memorial.

### DESCRIPTION

Constructed from White Marble, the monument consists of a soldier 'at ease' pose with rifle at right side with right leg resting upon a cannon. This surmounts a tall granite pedestal (bi-colour). A grey plinth consisting of two steps sits below. R. Jones 2018

### SOURCES

#### OTHER SOURCES

---

**PRN** 57992 **NAME** LLANGEITHO

**TYPE** WAR MEMORIAL **PERIOD** MODERN

**NGR** SN6188959731 **COMMUNITY** Llangeitho

**CONDITION** INTACT **STATUS** *Listed Building 19011 II* **EVIDENCE** STRUCTURE

### SUMMARY

Grade II listed World War I memorial.

### DESCRIPTION

Consisting of a statue in White marble depicting a soldier, standing with hands clasped above his reversed rifle. The statue surmounts a Red granite pedestal with a chamfered top and an ogee moulded top of the pedestal. R.Jones 2018 14 men are commemorated on the pedestal with rank, regiment, home, place, date and age at death. The commemoration is written in Welsh with gold lettering. The southeast face is commemorating the three men who lost their lives in the Second World War. A Pyper 2019.

### SOURCES

#### OTHER SOURCES

Report Rathouse, W. 2017 Archaeology For Mental Health : War Memorials Survey : Project Report

---

**PRN** 58039 **NAME** LLANBADARN FAWR

**TYPE** War Memorial **PERIOD** MODERN

**NGR** SN5999080927 **COMMUNITY** Llanbadarn Fawr

**CONDITION** INTACT **STATUS** *Listed Building 27049 II* **EVIDENCE** , Building

### SUMMARY

Grade II listed war memorial. This monument is a First and Second World War memorial dedicated to fallen soldiers from Aberystwyth, situated in Llabadarn Fawr. It is a Freestanding Cross next to a wall with plaques, made with stone and incised with ink. R.Davey based on W.Rathouse 2018

### DESCRIPTION



## SOURCES

### OTHER SOURCES

Report Rathouse, W. 2017 Archaeology For Mental Health : War Memorials Survey : Project Report

---

**PRN** 58202 **NAME** YSTRAD FFLUR

**TYPE** War Memorial **PERIOD** MODERN

**NGR** SN7297066374 **COMMUNITY** Ystrad Fflur

**CONDITION** INTACT **STATUS** *Listed Building 82983 II* **EVIDENCE** Building

## SUMMARY

Grade II listed war memorial to those who fell in WWI and WWII. R. Jones 2018

## DESCRIPTION

The Memorial consists of a White marble female figure set on top of a high stone and red granite pedestal. The monument is enclosed by cast-iron railings. The figure, in Grecian dress and has one arm upraised holding an olive branch. The pedestal has two rendered steps, then grey sandstone base of two big steps, the lower one chamfered, the upper one coved on upper edge. Taken from CADW. R.Jones 2018

## SOURCES

### OTHER SOURCES

Report Rathouse, W. 2017 Archaeology For Mental Health : War Memorials Survey : Project Report

---

**PRN** 58707 **NAME** WHITCHURCH/SOLVA

**TYPE** War Memorial **PERIOD** MODERN

**NGR** SM8029724268 **COMMUNITY** Solva

**CONDITION** Not Known **STATUS** *Listed Building 12458 II, Pembrokeshire Coast National Park* **EVIDENCE** Building

## SUMMARY

Grade II listed war memorial of c. 1920

## DESCRIPTION

The cross made by Sir John Lavery dedicated to those who fell in WW1 and WW11. A Cornish Granite Celtic cross on large tapering stone block. Raised on five steps. The monument contains is inscribed with the words "EIN MEIRW GOGONEDDUS/ OUR GLORIOUS DEAD" description from War Memorials Register that references The History of Solva, 1944-39 - Auth. F.W.Warburton. R. Jones 2018

## SOURCES

### OTHER SOURCES

---

**PRN** 59054 **NAME** MILFORD HAVEN

**TYPE** WAR MEMORIAL **PERIOD** MODERN

**NGR** SM9048205842 **COMMUNITY** Milford

**CONDITION** INTACT, Not Known **STATUS** *Listed Building 12899 II* **EVIDENCE** Building, STRUCTURE

## SUMMARY

War Memorial the 242 individuals from Milford Haven who fell during the First World War, with names added from those who died in the Second World War, Korea and Iraq. A life-size sculpture of an airman stands on top of a pedestal with on the base a sailor and a soldier.

### DESCRIPTION

An impressive memorial to the 242 individuals from Milford Haven who died during the First World War. It stands to over 5m high and consists of a black granite and grey granite column resting on a double grey granite plinth. A life-size white stone (marble or Portland Stone) sculpture of an airman stands on top of the column, a sculpture of a soldier stands on the plinth facing west and a sculpture of a sailor stand on the plinth facing east. The names of the fallen are inscribed on the black granite column. Brass plaques attached to the plinth record the names of the fallen the Second World War (in 2018 these were obscured by poppy wreaths). Separate plaques record the fallen in the Korean War and in Iraq. The makers were Evan Jones, J C Ward and Admiral Charles Dare. It was unveiled in 1924. It is listed grade II.K Murphy September 2018.

### SOURCES

#### OTHER SOURCES

---

**PRN** 59055 **NAME** MILFORD HAVEN

**TYPE** WAR MEMORIAL **PERIOD** MODERN

**NGR** SM9067305796 **COMMUNITY** Milford

**CONDITION** INTACT, Not Known **STATUS** *Listed Building 12900 II* **EVIDENCE** Building, STRUCTURE

### SUMMARY

The Belgian War Memorial. An obelisk erected in gratitude of the people of Ostend resident in Milford Haven during the First World War to the British Nation and the people of Milford Haven.

### DESCRIPTION

A c.4.5m high polished red granite obelisk standing on a white stone plinth located in the centre of a busy road junction. An inscription on one face reads: 'Erected by the steam trawler owners and people of Ostend who were resident in this town during the Great War 1914-1919 as a mark of gratitude to the British nation in general and the people of Milford Haven in particular for the hospitality received here during the period of exile from Belgium'. The inscription is repeated in Flemish on the opposite face. It was unveiled in 1919. Listed grade II. K Murphy September 2018.

### SOURCES

#### OTHER SOURCES

---

**PRN** 59234 **NAME** PEMBROKE DOCK

**TYPE** WAR MEMORIAL **PERIOD** MODERN

**NGR** SM9676903315 **COMMUNITY** Pembroke Dock

**CONDITION** INTACT, Not Known **STATUS** *Listed Building 14346 II* **EVIDENCE** Building, STRUCTURE

### SUMMARY

War memorial to the men of Pembroke Dock who fell in the First World War. It is a red sandstone calvary standing on tiered limestone plinth. A dedication to the men who fell in the Second World War has been added. It stands in St John's churchyard.

## DESCRIPTION

War memorial to the men of Pembroke Dock who fell in the First World War, plus those who fell in the Second World War. There are no individual names on the memorial. It consists of a red sandstone calvary standing on a six tier stepped plinth constructed of limestone blocks. The whole stands to c.5m high. It stands in the northeast corner of St John's churchyard on the corner of Bush Street and Church Street. The maker was John Coates Carter FRIBA. It was unveiled on 30 July 1921. It is a listed building grade II. K Murphy September 2018.

## SOURCES

### OTHER SOURCES

---

**PRN** 59465 **NAME** FRESHWATER WEST

**TYPE** WAR MEMORIAL **PERIOD** MODERN

**NGR** SM8836000734 **COMMUNITY** Angle

**CONDITION** INTACT, Not Known **STATUS** *Listed Building 17162 II, Pembrokeshire Coast National Park* **EVIDENCE** Building, STRUCTURE

## SUMMARY

First World War memorial. It is a calvary standing on an octagonal column resting on an octagonal two-tier plinth carved out of a course gritstone. It stands on a hill on the side of a road overlooking Freshwater West Bay.

## DESCRIPTION

This First World War memorial consists of a calvary on top of an octagonal column resting on a two-tier octagonal plinth. Three faces of the upper part of the octagonal plinth have a raised-gothic letter inscription, now illegible. The lower tier serves as a seat. The whole is c. 4m high. It stands alongside a road in a grassy area on a hill overlooking Freshwater West Bay. It is by John Coates Carter. It is a listed building grade II. K Murphy September 2018.

## SOURCES

### OTHER SOURCES

---

**PRN** 59618 **NAME** LAMPETER VELFREY

**TYPE** WAR MEMORIAL **PERIOD** MODERN

**NGR** SN1550014410 **COMMUNITY** Lampeter Velfrey

**CONDITION** INTACT, Not Known **STATUS** *Listed Building 18989 II* **EVIDENCE** Building, STRUCTURE

## SUMMARY

War memorial to the fallen in the First World War from Lampeter Velfrey parish. It is a Celtic cross standing on square plinth on which the names of the 14 fallen are inscribed. The names of the four who fell in the Second World War are inscribed on a separate tablet attached to the foot of the memorial. It stands outside the graveyard of the parish church. It is a listed building grade II.

## DESCRIPTION

This war memorial stands on the edge of graveyard of Lampeter Velfrey parish church in a semi-circular recess. It consists of a grey granite Celtic cross with interlace decoration approximately 1.5m high resting on a tapering grey granite square plinth on which are inscribed the names of the 14 men from the parish who fell in the First World War. This

sits on a square concrete plinth with chamfered top. The whole monument is c.3m high. A marble tablet recording the four men who fell during the Second World War is attached to the foot of the memorial. Listed Grade II. K Murphy July 2018.

## SOURCES

### OTHER SOURCES

---

**PRN** 59658 **NAME** DALE

**TYPE** War Memorial **PERIOD** MODERN

**NGR** SM8055205653 **COMMUNITY** Dale

**CONDITION** INTACT, Not Known **STATUS** *Listed Building 19141 II, Pembrokeshire Coast National Park* **EVIDENCE** Building, STRUCTURE

## SUMMARY

War memorial to five men of Dale who fell in the First World War, with the name of one man who died in the Second World War added. The memorial is a statue of a soldier on a granite plinth. It stands in the cemetery.

## DESCRIPTION

An impressive war memorial to the five men from Dale who died in the First World War with the name of the one man who died in the Second World War added. It consists of a white stone (Portland Stone?) statue of a soldier at ease holding a rifle with one leg resting on a cannon on a polished red granite and grey-stone column set on a double stone-plinth. The whole is c.5m high. It stands in the local cemetery. The inscriptions are carved onto the granite column. The sculptor was E Jones and Son of Llanybyther. Unveiled in 1923. Listed grade II. K Murphy September 2018.

## SOURCES

### OTHER SOURCES

---

**PRN** 59936 **NAME** TENBY

**TYPE** War Memorial **PERIOD** MODERN

**NGR** SN1329800442 **COMMUNITY** Tenby

**CONDITION** INTACT, Not Known **STATUS** *Listed Building 26422 II, Pembrokeshire Coast National Park* **EVIDENCE** Building, STRUCTURE

## SUMMARY

War memorial to the 133 men of Tenby who fell in the First World War, with the names added of 111 men who died in the Second World War, five civilians and two men who died in Far East prisoner of war camps. It is a 3.5m high four-sided limestone cenotaph with the inscriptions on marble tablets. It stands in a small fenced garden.

## DESCRIPTION

A four-sided cenotaph 3.5m in height standing upon two broad limestone steps with a base standing within a garden. The 6 o'clock face at the base has lettering in gold. At the four angles above the base are square limestone pilasters finished with capitals of bronze. Decoration with limestone frieze with laurel wreaths. Set on each side is a white marble panel on which the inscription is in leaded letters. Above the capitals rises a moulded fascia, a frieze, and a dintel cornice in limestone. The town crest, ship and castle is on the front face. Marble plaque at base has been added for Second World War names. Made by Mr J Howard Morgan FRIBA and Mr. G H Beynon. Description taken from War Memorials Register (2810) R. Jones 2018 Grade II listed war memorial, WWI, WWII and Civilians killed in WWII and WWII far East Prisoners of War.

## SOURCES

### OTHER SOURCES

---

**PRN** 60367 **NAME** NARBERTH  
**TYPE** War Memorial **PERIOD** MODERN  
**NGR** SN1097314596 **COMMUNITY** Narberth  
**CONDITION** INTACT **STATUS** *Listed Building 6495 II* **EVIDENCE** EXTANT STRUCTURE

### SUMMARY

War memorial to the men of Narberth, Narberth North and Crinow who died in the First World War and the Second World War. It is a c.6m high stone cross on a plinth in a small walled garden. It is a listed building.

### DESCRIPTION

This memorial is a granite latin cross on an octagonal base set on a stepped limestone plinth. Total height c.6m. It lies in a small triangular garden defined by low walls and railings in the centre of Narberth. It names the 31 men who fell during the First World War from Narberth, Narberth North and Crinow, with the names of 11 who fell in the Second World War added. The inscription is written in English: 'THIS MONUMENT WAS ERECTED 1923 OUR GLORIOUS DEAD' around the octagonal base, on three panels below are the list of men with rank name and regiment, the fourth panel reads: 'IN MEMORY OF THOSE GALLANT MEN OF NARBERTH, NARBERTH N., AND CRINOW. WHO IN THE GREAT WAR 1914-1918 GAVE THEIR LIVES TO PRESERVE THE MOTHERLAND AS THE HOME OF LIBERTY & JUSTICE' It was unveiled in 1923. It is a listed building. K Murphy June 2018.

## SOURCES

### OTHER SOURCES

---

**PRN** 60459 **NAME** NEYLAND AND LLANSTADWELL  
**TYPE** WAR MEMORIAL **PERIOD** MODERN  
**NGR** SM9620105353 **COMMUNITY** Neyland  
**CONDITION** INTACT, Not Known **STATUS** *Listed Building 82530 II* **EVIDENCE** Building, STRUCTURE

### SUMMARY

War Memorial to 34 men from Neyland and Llanstadwell who fell in the First World War, with the names of 35 men and four civilians who died in the Second World War recorded on a separate tablet, plus one man who died in the Korean War recorded separately. It is a white stone column draped in cloth relief effect standing on a triple plinth.

### DESCRIPTION

A white stone column draped in cloth relief effect stands on a triple stone-plinth records the names of 34 men from Neyland and Llanstadwell who fell in the First World War. A separate tablet records the 35 men who died in the Second World War plus the names of four women who were killed by an enemy bomb at Hazelbeach. The name of one death during the Korean War is also recorded. The monument stands to c.3m high and is located in the centre of a quiet road. Listed grade II. K Murphy September 2018.

## SOURCES

### OTHER SOURCES

**PRN** 60468 **NAME** MERLINS BRIDGE

**TYPE** WAR MEMORIAL **PERIOD** MODERN

**NGR** SM9468214407 **COMMUNITY** Merlin's Bridge

**CONDITION** INTACT, Not Known **STATUS** *Listed Building 82636 II* **EVIDENCE** Building, STRUCTURE

### **SUMMARY**

A white marble column memorial to the eight men from Merlins Bridge and district who fell in the First World War. The names of three who fell in the Second World War have been added. It stands in a walled enclosure by the side of a main road.

### **DESCRIPTION**

The names of eight men from Merlins Bridge and district who fell in the First World War are recorded on a white marble column. A drape covers the top of the square, broken column and it sits on a plinth and base. Oak leaves and broken cannons are carved onto the front face of the column, below which on the plinth are inscribed the names of the fallen. The names of three men who fell during the Second World War have been added on a side face of the plinth. The whole stands to c3m high. It is located in a small, walled enclosure on the side of a main road. The maker was Edwards and Lewis of Haverfordwest. It is a listed building grade II. K Murphy September 2018.

### **SOURCES**

#### **OTHER SOURCES**

---

**PRN** 60508 **NAME** LLANDISSILIO

**TYPE** WAR MEMORIAL **PERIOD** MODERN

**NGR** SN1213521577 **COMMUNITY** Llandissilio West

**CONDITION** INTACT, Not Known **STATUS** *Listed Building 82947 II* **EVIDENCE** Building, STRUCTURE

### **SUMMARY**

Celtic Cross war memorial commemorating the ten men from Llandissilio West Parish who died in the First World War. The inscription also honours those who fell during the Second World War. It stands in a curved recess alongside the main road through the village.

### **DESCRIPTION**

War memorial to those who died from Llandissilio West Parish in the First World War and Second World War. It consists of finely carved Celtic revival cross with interlaced decoration on a curved-sided pyramidal pedestal. The whole standing on a double plinth. It stands to c.4.5m high. The names of the ten who fell in the First World War are inscribed on polished sides of the pedestal. There are no names from the fallen of the Second World War. The memorial stands in a walled curved recess alongside the main road through the village. It was unveiled in 1922. It is listed grade II. K Murphy September 2018.

### **SOURCES**

#### **OTHER SOURCES**

Report Hall, J and Sambrook, P 2012 Cleddau Ddu Hub Heritage and Natural Environment Audit: Part B Llandysilio Community Audit

---

**PRN** 60619 **NAME** PEMBROKE AND MONKTON  
**TYPE** War Memorial **PERIOD** MODERN  
**NGR** SM9823301550 **COMMUNITY** Pembroke  
**CONDITION** INTACT, Not Known **STATUS** *Listed Building 84989 II* **EVIDENCE** Building, STRUCTURE

### **SUMMARY**

Grade II listed war memorial erected in 1924.

### **DESCRIPTION**

The war memorial lies just outside the entrance to Pembroke Castle in a prominent position on the street. The memorial is in the form of a cenotaph, a plain design with just a laurel wreath on the east face bearing a commemorative inscription, TO OUR GLORIOUS DEAD 1914-1918 FORGET US NOT O LAND FOR WHICH WE FELL, MAY IT GO WELL WITH ENGLAND. STILL GO WELL. KEEP HER BRIGHT BANNERS WITHOUT SPOT OR STAIN. LEST WE SHOULD DREAM THAT WE HAVE DIED IN VAIN. On each of the other three faces are the names of the dead, listed by parish; St Mary's, St Michael's and Monkton. A further plaque has been added for those who died in the 1939-1945 war. It was erected in 1924, by T. W. Colley & Son of Pembroke, supervised by E. W. Lucas, surveyor to the Rural District Council. Unveiled 1924 by Lt-Gen. Sir Francis Lloyd, KCB, GCVO, DSO, colonel of Royal Welch Fusiliers, commander of 2nd Battalion Grenadier Guards in Boer War, officer commanding London District 1913-18. A Pyper 2019

### **SOURCES**

#### **OTHER SOURCES**

---

**PRN** 60656 **NAME** HAVERFORDWEST  
**TYPE** WAR MEMORIAL **PERIOD** MODERN  
**NGR** SM9560515695 **COMMUNITY** Haverfordwest  
**CONDITION** INTACT, Not Known **STATUS** *Listed Building 87049 II* **EVIDENCE** Building, STRUCTURE

### **SUMMARY**

War memorial to the 410 men of Pembrokeshire who fell during the First World War. It is a column of sandstone masonry topped with a sandstone sculpture of a Welsh dragon. An inscription and the names of the fallen are on bronze panels on the sides on the column.

### **DESCRIPTION**

War memorial to the 410 men of Pembrokeshire who fell during the First World War. It is a column and plinth of sandstone masonry topped with a sandstone sculpture of a Welsh dragon. The whole stands to c.4.5m high. An inscription and the names of the fallen are on bronze panels on the sides on the column and plinth. The names of battles are recorded on the chamfered corners of the column. It was unveiled in 1921. The memorial stands in a paved area of Salutation Square in Haverfordwest. It is listed grade II. K Murphy September 2018. Erected by T. Morgan and Sons of Perrots Avenue, Haverfordwest, Architects Milne and Phipps of London.

### **SOURCES**

#### **OTHER SOURCES**

Descriptive Text Lester Mason 2009 COMMUNITIES IN MOURNING: COMMEMORATION AND MEMORIAL CONSTRUCTION IN WEST WALES FOLLOWING THE GREAT WAR  
Unpublished PhD Thesis



---

**PRN** 60837 **NAME** ST.ELLYW  
**TYPE** War Memorial **PERIOD** MODERN  
**NGR** SN5065300516 **COMMUNITY** Llanelli  
**CONDITION** Not Known **STATUS** *Listed Building 11891 II* **EVIDENCE** Building

#### **SUMMARY**

Grade II listed war memorial (11891) Situated at south west angle of churchyard of Church of St Ellyw facing south over Bridge Street. Taken from Cadw R.Jones 2018

#### **DESCRIPTION**

A Granite Celtic cross with interlace decoration. Battered base with "1914" and "1919" in raised letters each side of carved Prince of Wales' feathers, above inscription to the men of the 4th Battalion, The Welsh Regiment. Three granite steps below. Taken from Cadw R.Jones 2018 The inscription reads: 1914 - 1919 ERECTED BY THE LOCAL OFFICERS N.C.Os AND MEN OF THE 4TH BATTALION THE WELSH REGT. IN MEMORY OF THEIR COMRADES WHO MADE THE SUPREME SACRIFICE IN THE WAR On the other four sides of the plinth are the rank and names of the 75 who lost their lives. Stone mason; M.L.EDWARDS, LLANELLY A. Pyper 2019

#### **SOURCES**

#### **OTHER SOURCES**

---

**PRN** 60918 **NAME** AMMANFORD PARK  
**TYPE** Gates,piers , WAR MEMORIAL **PERIOD** MODERN  
**NGR** SN6273312465 **COMMUNITY** Ammanford  
**CONDITION** Not Known **STATUS** *Listed Building 14809 II* **EVIDENCE** Building

#### **SUMMARY**

War Memorial gate piers and gates. A Pyper 2018

#### **DESCRIPTION**

Four stuccoed pillars with ornamental iron railings set on a low stuccoed wall and iron gates with the name 'Memorial Avenue' set high across both gates. A plaque on the right gate pier says, 'Erected by the Ammanford Branch of the British Legion July 1937' and below, 1914-1918 'IN COMMEMORATION OF THOSE WHO PAID THE SUPREME SACRIFICE PRO PATRIA' Below are 89 names of those who died. The left had pier commemorates the 1939-1945 war and 42 names of those who died. Reconstructed in c1982. Iron lanterns are set on each of the four pillars. A Pyper 2018 Grade II listed gates,piers

#### **SOURCES**

#### **OTHER SOURCES**

---

**PRN** 60933 **NAME** TALIARIS  
**TYPE** WAR MEMORIAL **PERIOD** MODERN  
**NGR** SN6534028107 **COMMUNITY** Manordeilo and Salem  
**CONDITION** INTACT, Not Known **STATUS** *Listed Building 15190 II* **EVIDENCE** Building, STRUCTURE

#### **SUMMARY**

War memorial to seven men who fell during the First World War from Taliaris Parish,

with the names of the three who fell during the Second World War added on a separate tablet. It consists a massive mortared-stone cairn with an inlaid red-granite cross and panel with the names of the fallen inscribed. It is reached by two curving flights of steps. Listed Grade II.

### DESCRIPTION

An unusual war memorial, consisting of massive cairn constructed from a coarse grit-stone, mortared, and reached by two curving flight of steps of similar construction. The whole is approximately 5m high. It is set on the side of a main road 100m from Taliaris Church. A red granite cross is set flush with the front surface of the cairn, below which is a red granite tablet inscribed, IN MEMORY OF THE FALLEN HEROES OF TALIARIS PARISH then the names of seven men who fell in the First World War, recording their rank, name, regiment and where and when they fell, below which is an ashlar plaque with a laurel leaf and crossed swords carving. The names of three men who fell in the Second World War in inscribed on separate red granite tablet. A low iron fence separates the monument from the field to its east. Commissioned by the Peel family of Taliaris, partly in commemoration of Capt A Peel killed in 1914 and Lt R Peel killed in 1917. Dedicated in 1923. Listed Grade II. K Murphy July 2018

### SOURCES

#### OTHER SOURCES

---

**PRN** 60980 **NAME** PUMPSAINT

**TYPE** Gates & Railings , WAR MEMORIAL **PERIOD** MODERN , POST MEDIEVAL

**NGR** SN6564140552 **COMMUNITY** Cynwyl Gaeo

**CONDITION** INTACT, Not Known **STATUS** *Listed Building 16255 II* **EVIDENCE** Building, EXTANT STRUCTURE

### SUMMARY

Grade II listed war memorial gates and railings.

### DESCRIPTION

Ornate iron gates, gate piers and iron arch with lantern built as a war memorial in 1925. Bronze commemorative plaques attached to either gate pier. 16 names on the left pier and 15 on the right and a second plaque on both piers for the 4 men who lost their lives in the Second World War. A plaque in the arch over the gates reads 'COF-ADAIL PLWYF CAIO I'R MEIBION A SYRTHIODD YN Y 1914 RHYFEL MAWR 1918'. Listed grade II. A Pyper 2018

### SOURCES

#### OTHER SOURCES

---

**PRN** 61050 **NAME** KIDWELLY

**TYPE** War Memorial **PERIOD** POST MEDIEVAL

**NGR** SN4070106971 **COMMUNITY** Kidwelly

**CONDITION** Not Known **STATUS** *Listed Building 20193 II* **EVIDENCE** Building

### SUMMARY

Grade II listed war memorial (20193) Cadw. R. Jones 2018

### DESCRIPTION

White marble statue of soldier with reversed rifle on large Portland stone pedestal, the whole some 6.5m (20') high. Pedestal is ornate with moulded plinth under raised broad

band of Greek key ornament, with moulding above and below. Shaft is plain but for carved laurel wreath on front over affixed name and date plaques, and is capped by a similar broad raised band of Greek-key ornament. Contemporary railed enclosure with upper finials and side gates. War Memorial of 1924 designed by Glendinning Moxham FRIBA, of Swansea. Description taken from Cadw. R. Jones 2018

## SOURCES

### OTHER SOURCES

---

**PRN** 61124 **NAME** PONTYBEREM

**TYPE** Public Hall **PERIOD** MODERN

**NGR** SN5038411082 **COMMUNITY** Pontyberem

**CONDITION** Not Known **STATUS** *Listed Building 21294 II* **EVIDENCE** Building

## SUMMARY

Grade II listed public hall

## DESCRIPTION

There was a public hall on the rear part of the site before the construction of the present building. The front part of the present building was built by Edwin Richards of Bryndeyrn, Pontyates, in front of the old public hall, and was opened officially by Sir Alfred Cope on the 16th of July 1927 (though dated 1926). The auditorium then constructed on the site of the old hall was opened in 1934. The identity of the architect has not been ascertained. It is said, according to local tradition, that the interiors were by a Cardiff designer. The two buildings originally functioned separately, with side entrances to the auditorium foyer, but are now fully integrated. The war-memorial in the front lobby has been moved to a side position. A plaque in the entrance records the renovation of the building in 1994. Taken from Cadw R. Jones 2018

## SOURCES

### OTHER SOURCES

---

**PRN** 61225 **NAME** LLANWRDA

**TYPE** Memorial **PERIOD** POST MEDIEVAL

**NGR** SN7133431663 **COMMUNITY** Llanwrda

**CONDITION** Not Known **STATUS** *Listed Building 22019 II* **EVIDENCE** Building

## SUMMARY

A war memorial constructed to commemorate lives lost in the First World War. A Pyper 2018

## DESCRIPTION

The memorial consists of a white marble soldier with a rifle, pointing downwards, between his feet. The soldier stands on a red granite plinth on two concrete steps within a small enclosure surrounded by railings. Inscription in Welsh on the front of plinth to seven men from the parish who died in the First World War 'Y Rhyfel Mawr 1914-1918'. The north side has 'ADEILADWYD GAN Y PLWYFOLION' - Built by the parishoners. On the south side is an inscription to the two men who died in the Second World War, 'Y Rhyfel Mawr 1939-45' On the concrete steps is an inscription by the monumental mason, 'W Thomas. Llandovery' A Pyper 2018 Grade II listed memorial

## SOURCES

## OTHER SOURCES

---

**PRN** 61241 **NAME** LLANSADWRN  
**TYPE** War Memorial **PERIOD** POST MEDIEVAL  
**NGR** SN6948631436 **COMMUNITY** Llansadwrn  
**CONDITION** Not Known **STATUS** *Listed Building 22110 II* **EVIDENCE** Building

### SUMMARY

Grade II listed war memorial c. 1920 made by J Thomas. Contains memorial for Boer War, WW1 and WWII. R.Jones 2018

### DESCRIPTION

War memorial, grey granite, classically-derived with square base, moulded plinth, polished square shaft with battered sides, two square polished blocks above and bulbous pyramidal cap. Matt tooled finish to cap, plinth, base, and rebated rounded edges of polished blocks. Square base has coved upper moulding, plinth has square thin base with upper cove then ogee profiled main part. Battered shaft with names of dead, then two polished square blocks above, one with inscriptions, upper one with etched military and funereal motifs of a sword and rifle crossed within a laurel wreath. Heavy bulbous pyramid capstone with acanthus leaves wrapped around angles. Stone coping surround with iron railings to interlinked oval pattern. Cadw. R. Jones 2018 Inscriptions read; GWELL ANGAU NA CHYWILYDD COF ADAIL A ADEILADWYD DRWY DANYSSCRIFIADAU CYHOEDDUS ER ANRHYDEDD I'R DEWRION O BLWYF LLANSADWRN ARODDASANT EU BYWYDAU DROS EU GWLAD YN RHYFEL Y BYD 1914-1918 Below are listed the names of the seven men who lost their lives inscribed with their rank, name, address, regiment, place and year of death. The monumental mason is recorded, J. Thomas. Llanelli.

### SOURCES

#### OTHER SOURCES

---

**PRN** 61361 **NAME** MARROS  
**TYPE** WAR MEMORIAL **PERIOD** MODERN  
**NGR** SN2075508966 **COMMUNITY** Eglwyscumin  
**CONDITION** INTACT, Not Known **STATUS** *Listed Building 24497 II* **EVIDENCE** Building, STRUCTURE

### SUMMARY

A war memorial in the form of a gritstone trilithon standing on a stone platform. The names of 16 men from Marros who served and two who died in the First World War are recorded on brass plaques attached to the stones.

### DESCRIPTION

An unusual war memorial in the form of a trilithon constructed from roughly shaped columns of local gritstone. It is located alongside the road through Marros close to the parish church. The trilithon sits on a stone-built platform accessed by five steps facing the road. The names of 16 men who served in the First World War from Marros are recorded on a bronze plaque on the left-hand upright. The names of two men who died are recorded on a plaque on the right-hand upright. The inspiration for such an unusual design is not known, though it may well have been the idea of George Treherne, a local antiquary and archaeologist, who was active in the area before and after the First World War. The memorial is listed grade II. K Murphy September 2018.

### SOURCES

## OTHER SOURCES

---

**PRN** 61408 **NAME** LLANBOIDY

**TYPE** WAR MEMORIAL **PERIOD** MODERN

**NGR** SN2167123215 **COMMUNITY** Llanboidy

**CONDITION** INTACT, Not Known **STATUS** *Listed Building 25627 II* **EVIDENCE** Building, STRUCTURE

### SUMMARY

White granite column memorial to the eleven men from Llanboidy who fell in the First World War. The name of one man who died in the Second World War has been added. It stands to c.6m high and is located in a prominent position in the churchyard alongside the road.

### DESCRIPTION

A c.6m high white granite memorial to eleven men from Llanboidy who fell in the First World War. The name of man who fell in the Second World War has been added. The names are inscribed on a panel on the front face of the column. It stands on a four-tiered concrete plinth in a prominent, elevated position on the edge of the churchyard overlooking the main road through the village. Steps lead up to the memorial from the road. It is a listed building grade II. K Murphy September 2018.

### SOURCES

### OTHER SOURCES

---

**PRN** 61467 **NAME** LLANGYNOG

**TYPE** WAR MEMORIAL **PERIOD** MODERN

**NGR** SN3387515576 **COMMUNITY** Llangynog

**CONDITION** INTACT **STATUS** *Listed Building 25803 II* **EVIDENCE** STRUCTURE

### SUMMARY

Free-standing roadside cross memorial erected in 1922 in memory of those who died in the First World War. L/Corp James Eric Howell Davies who fell in the Second World War added and also to Thomas Morris killed in the Boer War. The 4.6m high octagonal-section cross of limestone(?) stands on an octagonal plinth containing the inscriptions, on a granite base. Made by Martin L Edwards of Llanelli. Listed Grade II. K Murphy April 2018

### DESCRIPTION

Free-standing roadside cross memorial erected in 1922 in memory of those who died in the First World War. L/Corp James Eric Howell Davies who fell in the Second World War added and also to Thomas Morris killed in the Boer War. The 4.6m high octagonal-section cross of limestone(?) stands on an octagonal plinth containing the inscriptions, on a granite base. Inscription is primarily in English with rank, name and regiment. Made by Martin L Edwards of Llanelli. Listed Grade II. K Murphy April 2018 Two lines from a poem by William Ambrose is written in Welsh, 'SEGURDOD YW CLOD Y CLEDD A RHWD YW EI ANRHYDEDD' [idleness is praiseworthy in a sword, and its honour is rust]. English inscription reads, REMEMBER WITH ALL HONOUR THE NAMES OF CORPL TE DAVIES 9THWELSH PTE WDAVIES RE. PTE WDAVIES 2ND SWB. PTE S J EDWARDS 9THWELSH PTE J EVANS 8TH RWF GNR W HOWELLS 32ND DIV RATMB PTE WA KILLA 4THWELSH PTE BJ LEWIS 50THCANADIAN 2ND LIEUT B G REES 19TH RWF PTE E THOMAS RWF PTE DJ THOMAS 24THWELSH PTE BWILLIAMS KSLI AB SEAMAN AE WILLIAMS HMS GOODHOPE WHO GAVE THEIR LIVES FOR THEIR KING AND EMPIRE IN THE GREAT WAR



1914-1918 based on information on GM Awbery, in Carms Ant. 2018. A Pyper 2019

## SOURCES

### OTHER SOURCES

Article GM Awbery 2018 First World War memorials in Carmarthenshire: the language of remembrance

---

**PRN** 61546 **NAME** PENCADER

**TYPE** War Memorial **PERIOD** MODERN

**NGR** SN4455336022 **COMMUNITY** Llanfihangel ar Arth

**CONDITION** Not Known **STATUS** *Listed Building 81002 II* **EVIDENCE** Building

## SUMMARY

Grade II listed war memorial. R. Jones 2018

## DESCRIPTION

The monument depicts a soldier leaning against a tree stump holding his rifle vertically to his right leg. The figure surmounts a square plinth (red with stepped base. The lettering is in gold and the whole is surrounded by posts and railings. R. Jones 2018 The monument, written in Welsh depicts a soldier leaning against a tree stump holding his rifle vertically to his right leg. The figure surmounts a square plinth (red with stepped base. R Davey 2018.

## SOURCES

### OTHER SOURCES

---

**PRN** 61560 **NAME** LLANFYNYDD

**TYPE** War Memorial **PERIOD** POST MEDIEVAL

**NGR** SN5582927575 **COMMUNITY** Llanfynydd

**CONDITION** Not Known **STATUS** *Listed Building 81024 II* **EVIDENCE** Building

## SUMMARY

A war memorial erected to commemorate lives lost during the First World War.

## DESCRIPTION

Opposite the church in an semicircular enclosure with square piers to either side and a double chain across the front with cast iron pedestals by William Isaac & Son of Carmarthen. The monument is a red polished granite obelisk set on two stepped rustic stone plinth. The inscription is inscribed in gold on the column base, The text is entirely written in Welsh, remembering the five men who lost their lives in the Great War. The monumental mason, J W Davies, sculptor of Llanfynydd, is written on the face to the right. A Pyper and Cadw listing description 2018 Grade II listed war memorial

## SOURCES

### OTHER SOURCES

---

**PRN** 61805 **NAME** LLANDOVERY

**TYPE** War Memorial **PERIOD** MODERN

**NGR** SN7667034331 **COMMUNITY** Llandovery

**CONDITION** INTACT **STATUS** *Listed Building 82911 II* **EVIDENCE** Building

## SUMMARY

Grade II listed war memorial. Located close to the centre of Llandovery. Stone monument topped by Bronze figure of soldier, head bowed and rifle reversed. R Jones 2018

### DESCRIPTION

Llandovery town war memorial, of 1924, made by Boultons of Cheltenham, the statue a casting of one of the 4 figures on the LNER memorial outside Euston Station, London (sculptor unknown, memorial designed by R.Wynne Owen). It cost £900 and the five parts of the granite pedestal were said to represent the 5 years of the Great War. A chain-link fence is shown on granite posts around the memorial itself after c1930, and a photograph in Llandovery Official Guide of 1952 shows the coping of the present enclosure but not the posts and chains. War memorial, 1924, bronze soldier in greatcoat and cap holding a reversed rifle, on a tapering grey granite pedestal inscribed with names of the fallen. Front has 1914-19 inscription in incised panel, side has 1939-45 inscription in similar panel. Granite plinth and 3 granite steps. The memorial and lawns to E and W are surrounded by a low chain-link fence with 2 chains to each section on short cast-iron posts with ball finials, on rendered plinth. Description taken from Cadw (82911) R. Jones 2018 The memorial garden has a latin cross laid out within the grass. The inscription reads; THIS MEMORIAL IS ERECTED IN MEMORY OF THE MEN FROM THIS PARISH WHO DIED IN THEIR COUNTRY'S SERVICE DURING THE GREAT WAR AND WHOSE NAMES ARE RECORDED HEREON below which are 43 names and below which, PRO PATRIA MORI

### SOURCES

#### OTHER SOURCES

---

**PRN** 102540 **NAME** LAMPHEY REGIMENTAL MEMORIAL

**TYPE** Memorial **PERIOD** Modern

**NGR** SN01890088 **COMMUNITY** Lamphey

**CONDITION** Damaged **STATUS** None recorded **EVIDENCE** Structure

### SUMMARY

Concrete memorial slab located in woodland to the east of Lamphey Bishop's Palace. Concrete, cast with the Fleur de Lys within a wreath of laurels? Apparently the Manchester Regiment were stationed here in a huttred camp during the First World War, however the crest appears to represent the South Lancashire Regimental badge. The cast concrete was fractured and broken and encroached on by self-seeded trees when visited in January 2013. A Pyper

### DESCRIPTION

### SOURCES

#### OTHER SOURCES

Book PLANED A Guide to the Military Heritage of Pembrokeshire  
Letter Davies, M 2013 5th August 2013

---

**PRN** 111343 **NAME** PEMBREY

**TYPE** MEMORIAL HALL **PERIOD** MODERN

**NGR** SN42870133 **COMMUNITY** Cefn Sidan

**CONDITION** INTACT **STATUS** None recorded **EVIDENCE** BUILDING

### SUMMARY

A memorial hall erected to commemorate lives lost during the First World War. A Pyper

2018

### DESCRIPTION

The hall is built in an 'Arts and Crafts' style with red ceramic pan tile roof and half timbered dormer gablets. Architect's drawings show the hall consisting of a one and half storey building with a large central Assembly Hall with a stage at one end (Ladies and Gents dressing Room to either side) at the other end a 'Crush Hall' with Kitchen on one side and Ladies on the other. In a cross wing is a Billiard Room and Games Room. To either side of the entrance is a Gents and Porter's lodge. In the roof is a Reading room. A Pyper 2018. The hall was opened in 1933. The cost of construction was £5000, and money was raised from 1919-1933 through various events and £1,700 was contributed towards the total cost. The Miners' Welfare Fund made up the shortfall. It was also used by the army during the 1939-1945 war. On January 1st, 1970 the building and surrounding 3 acres of land were given by deed of gift to the Camarthenshire Education Committee. A Pyper based on BBC Domesday article 1985.

### SOURCES

#### OTHER SOURCES

Article 1986 Domesday Reloaded: Pembrey Memorial Hall  
Plan Pembrey Memorial Hall, drawings

---

**PRN** 112271 **NAME** CLARBESTON ROAD

**TYPE** COMMEMORATIVE MONUMENT **PERIOD** MODERN

**NGR** SN01852099 **COMMUNITY** Wiston

**CONDITION** NOT KNOWN **STATUS** *None recorded* **EVIDENCE** DOCUMENTARY  
EVIDENCE

### SUMMARY

The Memorial Hall was built as a memorial to those who lost their lives in the conflicts of the 20th century. A Pyper 2018 based on contributions from G Lloyd.

### DESCRIPTION

Within the foyer of the hall is a brass plaque which is dedicated to those who lost their lives from the parishes of Wiston, Walton East and Clarboston. It records nine casualties from 1914-1918 and three casualties from 1939-1945. The founding meeting for the Building Fund Committee was 8th June 1943, but it took 25 years to raise funds and the hall was not opened until 3rd July 1968. A Pyper 2018 based on information from Geraint Lloyd.

### SOURCES

#### OTHER SOURCES

Article Western Telegraph 1968 A Dream is Realised after Twenty-five Years.  
Documents 1968 Invitation Card to the Official Opening of the Memorial Hall, Clarboston Road  
Pers. Comm. Geraint Lloyd 2018 The War Memorial Plaque for World Wars I & II at the Memorial Hall, Clarboston Road

---

**PRN** 112276 **NAME** LLANYBYDDER

**TYPE** WAR MEMORIAL **PERIOD** MODERN

**NGR** SN5223944047 **COMMUNITY** Llanybydder

**CONDITION** INTACT **STATUS** *None recorded* **EVIDENCE** STRUCTURE

### SUMMARY

A war memorial originally erected to the people of the parish who lost their lives in the First World War. A.Pyper 2018.

## DESCRIPTION

A polished red granite obelisk is located at the crossroads in Llanybydder, set within a memorial plot enclosed by ornate iron railings with a gate on the corner. The tapered obelisk rises from a pediment. Set on a two stepped plinth of pale granite, and three red granite steps (the lowest bears the mason's name, 'E.J. Williams, Sculptor, Llanybyther') The pedestal is engraved with gold painted inscriptions on the three sides, southwest facing, northwest facing, and southeast facing. All inscriptions in Welsh. The southeast facing inscription appears to have the last two names added with a larger font, and may represent names added after the Second World War. An inscription on the highest granite step commemorates the fallen of the Second World War, 1939-1945. A.Pyper 2018.

## SOURCES

### OTHER SOURCES

Report Rathouse, W. 2017 Archaeology For Mental Health : War Memorials Survey : Project Report

---

**PRN** 112282 **NAME** LLANGATHEN

**TYPE** WAR MEMORIAL **PERIOD** MODERN

**NGR** SN5843722125 **COMMUNITY** Llangathen

**CONDITION** **STATUS** *None recorded* **EVIDENCE**

## SUMMARY

A war memorial erected to commemorate lives lost during the First and Second World Wars.

## DESCRIPTION

Located within St Cathen's Church yard. The monument of white granite has a Celtic wheel cross design. Decorated with knot-work upon cross and shaft. The latter has a reversed sword set above a Laurel Wreath on front face. Inscriptions to those who fell in both Wars. Stands on large plinth with two steps to base of cross next to church entrance. R. Jones 2018 The inscription reads; THE GREAT WAR 1914-1918 TO THE GLORY OF GOD AND IN PROUD MEMORY OF THE MEN OF THIS PARISH WHO FOR RIGHT AND LIBERTY MADE THE SUPREME SACRIFICE below are listed 6 names and their home address. 11 names are listed on the north face beneath which is written, 'THEIR NAME LIVETH FOR EVERMORE' The monumental mason is M.L.EDWARDS LLANELLY & AMMANFORD On the west face are commemorated the names of three men who died in the 1919-1945 war. A Pyper 2019

## SOURCES

### OTHER SOURCES

---

**PRN** 112283 **NAME** WHITLAND

**TYPE** WAR MEMORIAL **PERIOD** MODERN

**NGR** SN19831670 **COMMUNITY** Whitland

**CONDITION** INTACT **STATUS** *None recorded* **EVIDENCE** EXTANT STRUCTURE

## SUMMARY

A war memorial in the shape of a celtic cross A Pyper 2018

## DESCRIPTION

War memorial located in the grounds of the English Congregational Chapel Whitland, West Street. Set on a plinth of three steps and below that a further two cement rendered



steps. The cross is carved out of a red conglomerate stone and the inscription which is on the south face of the three steps of the plinth is now very difficult to read. A new slate plaque has been attached to the bottom step with the names of the servicemen lost in both world wars. A Pyper 2019.

## **SOURCES**

### **OTHER SOURCES**

---

**PRN** 112284 **NAME** PONTARGOTHI

**TYPE** WAR MEMORIAL HALL **PERIOD** MODERN

**NGR** SN50322171 **COMMUNITY** Llanegwad

**CONDITION** INTACT **STATUS** *None recorded* **EVIDENCE** BUILDING

## **SUMMARY**

War Memorial Hall, built to commemorate the World War. A Pyper 2018

## **DESCRIPTION**

The Memorial Hall lies perpendicular to the main road (A40). The roadside gable end has a stone plaque above the central door with the inscription; War Memorial Hall 1914-1918 Built 1925

## **SOURCES**

### **OTHER SOURCES**

---

**PRN** 112285 **NAME** LLANWINIO

**TYPE** WAR MEMORIAL **PERIOD** MODERN

**NGR** SN26092643 **COMMUNITY** Llanwinio

**CONDITION** INTACT **STATUS** *None recorded* **EVIDENCE** STRUCTURE

## **SUMMARY**

War memorial in Llanwinio, in a churchyard. A Pyper 2018 The memorial, which stands in St Gwynno's Church commemorates 3 men from Llanwinio who died in World War I. R.Davey based on W.Rathouse 2018

## **DESCRIPTION**

A Celtic cross carved in granite on a three stepped plinth, set on a concrete pad. Located at the southwestern edge of the churchyard. The inscription is set in the southwestern faces of the plinths. ER COF ANNWYL AM Y BECHGYN DEWR OR PLWYF HWN A GWYMPODD YN Y RHYFEL MAWR three names are listed with their regiments below reads, 'MEWN ANGOF NI CHANT FOD 1914-1918' A Pyper 2018

## **SOURCES**

### **OTHER SOURCES**

---

**PRN** 112286 **NAME** CENARTH

**TYPE** WAR MEMORIAL **PERIOD** MODERN

**NGR** SN27034147 **COMMUNITY** Cenarth

**CONDITION** INTACT **STATUS** *None recorded* **EVIDENCE** STRUCTURE

## **SUMMARY**

War memorial to the five men from Cenarth who fell during the First World War with the

names of the one man who died in the Second World War added. It is a stone Celtic cross on a pedestal located in a small garden outside the churchyard alongside the main road through the village.

#### **DESCRIPTION**

War memorial to the five men from Cenarth who fell during the First World War with the names of the one man who died in the Second World War added. It is a roughly carved celtic cross made from a conglomerate stone. It stands on a pedestal of the same material. The inscriptions are raised metal lettering on polished panels on the cross shaft and pedestal. The whole sits on a two-tier concrete plinth and stands to x.3m high. It was unveiled in January 1922. A brass plaque attached to the pedestal records the names of the crew of a Wellington that crashed on 23rd August 1944. K Murphy October 2018 A war memorial erected to commemorate lives lost during the First World War.

#### **SOURCES**

#### **OTHER SOURCES**

---

**PRN** 112287 **NAME** DREFACH FELINDRE  
**TYPE** WAR MEMORIAL **PERIOD** MODERN  
**NGR** SN3538738395 **COMMUNITY** Llangeler  
**CONDITION** **STATUS** *None recorded* **EVIDENCE**

#### **SUMMARY**

A war memorial erected to commemorate lives lost during the First World War and World War II.

#### **DESCRIPTION**

A grey polished granite column with a Latin cross at the top and set upon a square three stepped plinth in polished Aberdeen granite. The inscription is painted with gold lettering. The monument is set to the north of the entrance to St Barnabas Church with the inscription facing onto the road to the east. The inscription is written in English and commemorates the 13 men of Penboyer Parish with their addresses. Below the inscription is recorded that the monument was, 'Erected through the efforts of the Penboyer Farmers Union'. On the south face is an inscription to the six men who lost their lives in the Second World War. A Pyper 2018

#### **SOURCES**

#### **OTHER SOURCES**

---

**PRN** 112288 **NAME** PONTHENRI  
**TYPE** WAR MEMORIAL **PERIOD** MODERN  
**NGR** SN4782209246 **COMMUNITY** Llanelli Rural  
**CONDITION** **STATUS** *None recorded* **EVIDENCE**

#### **SUMMARY**

A war memorial erected to commemorate lives lost during the First and Second World Wars.

#### **DESCRIPTION**

The monument is located in the grounds of Bethesda Chapel in the village of Ponthenri. The monument is cast in concrete? (IWM site) or Granite and is of a traditional Celtic wheel design decorated with knot-work. Set upon a plinth containing the names of those who fell on both conflicts, which is set upon four steps. The monument lies within an

enclosure defined by chain link fencing. R Jones 2018

**SOURCES**  
**OTHER SOURCES**

---

**PRN 112289 NAME** FELINFOEL  
**TYPE** , WAR MEMORIAL **PERIOD** MODERN  
**NGR** SN5187802230 **COMMUNITY** Llanelli Rural  
**CONDITION** INTACT **STATUS** *None recorded* **EVIDENCE**

**SUMMARY**

A war memorial erected to commemorate lives lost during the Boer, First and Second World Wars.

**DESCRIPTION**

The monument located near the lych gate of Holy Trinity Church Felinfoel. The granite? monument is of Celtic wheel cross design with front face decorated with knot-work. Cross set on plinth inscribed on all cardinal faces with the conflicts and and the names of those who fell and is itself set upon three steps which define the monument area. R.Jones 2018

**SOURCES**  
**OTHER SOURCES**

---

**PRN 112290 NAME** NANTGAREDIG  
**TYPE** WAR MEMORIAL **PERIOD** MODERN  
**NGR** SN4936221759 **COMMUNITY** Llanegwad  
**CONDITION** INTACT **STATUS** *None recorded* **EVIDENCE** STRUCTURE

**SUMMARY**

Red granite column memorial to five men from Siloam Chapel, Nantgaredig who fell in the First World War. The name of one man who fell in the Second World War has been added. The monument stands in a yard in front of the chapel.

**DESCRIPTION**

War memorial to five men from Siloam Chapel, Nantgaredig who fell in the First World War. It consists of a column on a two-tier plinth topped with a urn. The whole is in red granite and stands to c.2m high. It is located in a yard to the front of chapel. The names with a dedication in Welsh are inscribed on the front face of the column. The name of one man who fell in the Second World War is inscribed on a side of the column. K Murphy September 2018.

**SOURCES**  
**OTHER SOURCES**

---

**PRN 112291 NAME** PENIEL  
**TYPE** WAR MEMORIAL **PERIOD** MODERN  
**NGR** SN4358024165 **COMMUNITY** Abergwili  
**CONDITION** INTACT **STATUS** *None recorded* **EVIDENCE**

**SUMMARY**

A war memorial erected to commemorate lives lost during the First World War and WWII.

### DESCRIPTION

The monument is consists of a mottled black marble column topped by an urn of the same material. The whole is mounted on a double stepped concrete plinth. Carved inscriptions originally in gold painted lettering. Dimensions are : depth 610mm, height 2200mm, width 610mm. Taken from War Memorial Webs description. R. Jones 2018 The monument lies within the chapel enclosure next to the adjoining chapel house. The east facing inscription is in Welsh and records 3 names, their regiment and address and date/place of death, on the north side is an English inscription to five more men and records place and date of death. Records the Great War 1914-1919. A Pyper 2019.

### SOURCES

### OTHER SOURCES

---

**PRN** 112292 **NAME** PEMBROKESHIRE

**TYPE** PLAQUE **PERIOD** MODERN

**NGR** SM95741686 **COMMUNITY** Haverfordwest

**CONDITION** **STATUS** *None recorded* **EVIDENCE**

### SUMMARY

A memorial plaque from the Pembrokeshire War Memorial Hospital (1923 to 1935) which was formerly located on Winch Lane, and now moved to the new hospital at Withybush.

### DESCRIPTION

### SOURCES

### OTHER SOURCES

---

**PRN** 112293 **NAME** ABERGWILI

**TYPE** WAR MEMORIAL **PERIOD** MODERN

**NGR** SN43842104 **COMMUNITY** Abergwili

**CONDITION** **STATUS** *None recorded* **EVIDENCE**

### SUMMARY

A war memorial erected to commemorate lives lost during the First World War.

### DESCRIPTION

A celtic cross War Memorial, carved in white granite on a tapered granite step and plinth and set on two further concrete steps. The shaft and cross are decorated with knotwork. Set within a raised paved area flanked with low walls to either side, railings to the rear. Sixteen lives commemorated on the front face of tapered cross base including one female nurse and an airman who died in 1920 in Ireland. The right hand face commemorates those lost during 1939-1945 war. A Pyper based on photographs from J Holland. 2018.

### SOURCES

### OTHER SOURCES

---

**PRN 112294 NAME** CROSSHANDS  
**TYPE** WAR MEMORIAL **PERIOD** MODERN  
**NGR** SN5616812761 **COMMUNITY** Llannon  
**CONDITION** **STATUS** *None recorded* **EVIDENCE**

#### **SUMMARY**

A war memorial originally erected to commemorate lives lost during the First and Second World Wars and the Malayan Emergency (1948-60) .

#### **DESCRIPTION**

The white Granite? cross lies within the village memorial gardens. The cross is inscribed with the names of those who fell in each of the above conflicts. The cross is set on a simple tapered shaft decorated with Gothic 'window' decoration at base of shaft. The cross is set upon a base of three steps which has a Laurel leaf design. R Jones 2018

#### **SOURCES**

#### **OTHER SOURCES**

---

**PRN 112295 NAME** LLANGAIN  
**TYPE** MEMORIAL HALL **PERIOD** MODERN  
**NGR** SN3829715739 **COMMUNITY** Llangain  
**CONDITION** NOT KNOWN **STATUS** *None recorded* **EVIDENCE** DOCUMENTARY  
EVIDENCE

#### **SUMMARY**

A memorial hall constructed to commemorate lives lost during the World Wars.

#### **DESCRIPTION**

LLANGAIN & DISTRICT MEMORIAL HALL was built in 1963 at a cost of £7,000 (just over £100,000 in today's money in 2018), on land donated by Mr Tom Roberts of Penycoed (Farm). The architect was Berwyn Thomas & Partners of Cardiff and the builder was D.Geo Lewis & Son of Priory Street, The hall was officially opened on Friday, 3 April, 1964. The unveiling of the memorial plaque containing the names of those who died in both World Wars was performed by Mrs May Davies, sister to Lce-Cpl Willie Davies of Green Castle who died of wounds received 23 March, 1918, aged 20. from Llangain Community Council website. A Pyper 2018

#### **SOURCES**

#### **OTHER SOURCES**

---

**PRN 112296 NAME** LAUGHARNE  
**TYPE** MEMORIAL HALL **PERIOD** MODERN  
**NGR** SN3015511224 **COMMUNITY** Laugharne Township  
**CONDITION** NOT KNOWN **STATUS** *None recorded* **EVIDENCE** DOCUMENTARY  
EVIDENCE

#### **SUMMARY**

A memorial hall constructed to commemorate lives lost during the World Wars.

#### **DESCRIPTION**

The memorial hall was originally constructed to commemorate the 35 men of Laugharne who lost their lives in the First World War. Construction began in 1925 with a foundation stone being laid in a ceremony on 5th June 1925 and it was then opened on 17th



March 1926. The hall's architect was Mr WSP Cottrell from Carmarthen, and it was described as, 'stone built with a grey Caernarfon slated roof. The external walls are remembered, and although perfectly plain, the external elevations are quite pleasing. The interior has been carefully planned, and treated in every way, with seating capacity for 500.' (The Welshman newspaper 26th March 1926). A memorial tablet was designed also by the architect and erected by Mr A. M. Lewis monumental mason, Carmarthen, which was placed in the external wall. The original hall suffered from subsidence and has been replaced by a new hall with a further memorial stone placed at the side of the hall. A Pyper based on information in 'Laugharne in the Great War' Talacharn Community History 2018.

#### **SOURCES**

##### **OTHER SOURCES**

Book Talacharn Community History. Editors Denize McIntyre & Peter Stopp 2018  
Laugharne in the Great War. Reflections 100 years on.

---

**PRN** 112297 **NAME** LLANSTEFFAN

**TYPE** MEMORIAL HALL **PERIOD** MODERN

**NGR** SN3507110786 **COMMUNITY** Llansteffan

**CONDITION** NOT KNOWN **STATUS** *None recorded* **EVIDENCE** DOCUMENTARY EVIDENCE

#### **SUMMARY**

A memorial hall constructed to commemorate lives lost during the World Wars.

#### **DESCRIPTION**

A memorial hall erected in 1938-9 by Leonard Crabbe, with an Art Deco style gabled frontage and a parapet to the front porch. Inscribed foundation stones either side of the entrance record that the stone to the left of the entrance was laid by Mrs. S Cliff John of Solva and Llanstephan 14th September 1938, to the right, a foundation stone was laid by Thomas Brown Stephens Esq High Sheriff of Carmarthenshire, 1937-38, The Grove, Llanstephan 14th September 1938. A Pyper 2019

#### **SOURCES**

##### **OTHER SOURCES**

---

**PRN** 112298 **NAME** PONTIATES

**TYPE** WAR MEMORIAL **PERIOD** MODERN

**NGR** SN4702408317 **COMMUNITY** Llangyndeyrn

**CONDITION** INTACT **STATUS** *None recorded* **EVIDENCE** DOCUMENTARY EVIDENCE

#### **SUMMARY**

A war memorial in commemoration of those who fell in the First and Second World Wars.

#### **DESCRIPTION**

The monument is a simple Obelisk design in polished red marble. Inscribed with the names who fell in each conflict. It is situated in front of the local village Welfare Hall. Set within an area defined by four bollards linked by chain link fencing. R. Jones 2018

#### **SOURCES**

##### **OTHER SOURCES**

---

**PRN** 112300 **NAME** CRIBYN  
**TYPE** WAR MEMORIAL **PERIOD** MODERN  
**NGR** SN52065143 **COMMUNITY** Llanfihangel Ystrad  
**CONDITION** NOT KNOWN **STATUS** *None recorded* **EVIDENCE** DOCUMENTARY EVIDENCE

#### **SUMMARY**

A war memorial constructed to commemorate lives lost in the World Wars. Moved to this location from its original site at the crossroads.

#### **DESCRIPTION**

The monument consists of a white marble statue of a soldier at ease with his left foot resting on recumbent shell and a rifle held against his right side. He stands on a chamfered plinth on top of a grey polished granite square column. An inscription is written on the front panel to commemorate those who lost their lives during the Great War 1914-1919. The side panels record the 12 men who lost their lives with their rank, name, address and regiment, where they fell, the date and their age. Two large inscribed panels resting on the ground at the foot of the monument record those who served and survived the war. An additional polished grey granite stone is inscribed with those who lost their lives in the Second World War. The monument which is not in its original location is sited to the north of St Silin's church in a square enclosure with galvanised railings. A Pyper based on information and photographs from B Burnham 2018.

#### **SOURCES**

##### **OTHER SOURCES**

---

**PRN** 112301 **NAME** LLANAFAN  
**TYPE** WAR MEMORIAL **PERIOD** MODERN  
**NGR** SN6844472098 **COMMUNITY** Trawsgoed  
**CONDITION** INTACT **STATUS** *None recorded* **EVIDENCE** STRUCTURE

#### **SUMMARY**

A war memorial constructed originally to commemorate lives lost in the First World War and Second World War.

#### **DESCRIPTION**

A memorial dedicated to the soldiers of World War I and II, it was built as a Celtic stone cross In Llanafan, Aberystwyth located in a graveyard by a roadside. Imagery used is of a Celtic cross with a sword. R.Davey based on W.Rathouse 2018

#### **SOURCES**

##### **OTHER SOURCES**

Report Rathouse, W. 2017 Archaeology For Mental Health : War Memorials Survey : Project Report

---

**PRN** 112302 **NAME** DEVILS BRIDGE  
**TYPE** WAR MEMORIAL **PERIOD** MODERN  
**NGR** SN7370476886 **COMMUNITY** Pontarfynach  
**CONDITION** INTACT **STATUS** *None recorded* **EVIDENCE** DOCUMENTARY EVIDENCE

#### **SUMMARY**

A stone cross memorial painted in black, commemorating World War I and II soldiers, as

well as a Sergeant who died of a terminal illness. R.Davey based on Will Rathouse 2018

#### **DESCRIPTION**

The monument is the form of a Celtic style wheel cross which is supported by a tapering shaft. This located within its own enclosure of painted railings. description taken from IWM war monuments record. R. Jones 2018 The rustic plinth is inscribed with 10 names and their home address. A further 4 names are inscribed on a plaque for those from Cymystwyth, that as been added to the side face, and on the other side face those from Ponterwyd and Ystumtuen 1914-1918 (7 names), 1939-45 (6 names) and Staff Sargent Sandra Evans, who died in 2011.

#### **SOURCES**

##### **OTHER SOURCES**

Report Rathouse, W. 2017 Archaeology For Mental Health : War Memorials Survey : Project Report

---

**PRN** 112303 **NAME** PENRHYN-COCH

**TYPE** WAR MEMORIAL **PERIOD** MODERN

**NGR** SN6422984060 **COMMUNITY** Trefeurig

**CONDITION** NOT KNOWN **STATUS** *None recorded* **EVIDENCE** DOCUMENTARY EVIDENCE

#### **SUMMARY**

A war memorial originally constructed to commemorate lives lost during the First and Second World War.

#### **DESCRIPTION**

Monument consists of a small cross surmounting a large quartz block. This located within and enclosure defined by low metal railings. R.Jones 2018

#### **SOURCES**

##### **OTHER SOURCES**

---

**PRN** 112304 **NAME** LLANILAR

**TYPE** WAR MEMORIAL **PERIOD** MODERN

**NGR** SN6237075084 **COMMUNITY** Llanilar

**CONDITION** NEAR INTACT **STATUS** *None recorded* **EVIDENCE** STRUCTURE

#### **SUMMARY**

A war memorial originally constructed to commemorate lives lost during the First and Second World Wars.

#### **DESCRIPTION**

A war memorial is located alongside the path leading up to St Hilary's church. It is a white marble Latin cross with an oak branch and a sword draped over it. It sits on a three stepped plinth commemorating one man who lost his life in the First World War, recording his name, regiment, where and when he was killed and his age, written in Welsh. The southern side of the plinth records a man who was killed in the Second World War, written in English. A Pyper 2019

#### **SOURCES**

##### **OTHER SOURCES**

Report Rathouse, W. 2017 Archaeology For Mental Health : War Memorials Survey : Project Report

---

**PRN 112305 NAME** LLANARTH  
**TYPE** MEMORIAL HALL **PERIOD** MODERN  
**NGR** SN4235857530 **COMMUNITY** Llanarth  
**CONDITION** NOT KNOWN **STATUS** *None recorded* **EVIDENCE** DOCUMENTARY  
EVIDENCE

**SUMMARY**

A memorial hall originally constructed to commemorate lives lost during the First and Second World Wars.

**DESCRIPTION**

**SOURCES**

**OTHER SOURCES**

---

**PRN 112306 NAME** LLANRHYSTUD  
**TYPE** MEMORIAL HALL **PERIOD** MODERN  
**NGR** SN5371969423 **COMMUNITY** Llanrhystyd  
**CONDITION** NOT KNOWN **STATUS** *None recorded* **EVIDENCE** DOCUMENTARY  
EVIDENCE

**SUMMARY**

A memorial hall originally constructed to commemorate lives lost during the First World War. R.L. Davey

**DESCRIPTION**

The memorial hall is constructed as a simple corrugated metal hall but with a nicely detailed rendered front gable, with a Diocletian window over the flat roofed entrance porch. 1914 and 1918 and NEUADD GOFFA are recorded on the gable end. A Pyper 2019.

**SOURCES**

**OTHER SOURCES**

---

**PRN 112307 NAME** ABERAERON  
**TYPE** MEMORIAL HALL **PERIOD** MODERN  
**NGR** SN4597162550 **COMMUNITY** Aberaeron  
**CONDITION** NOT KNOWN **STATUS** *None recorded* **EVIDENCE** DOCUMENTARY  
EVIDENCE

**SUMMARY**

A memorial hall constructed to commemorate lives lost during the First World War. R.L. Davey

**DESCRIPTION**

Built in 1923 by L Bankes-Price, with a Venetian window over the central entrance; MEMORIAL HALL 1914-1919 written in the pediment, and with 1939-1945 added. Within the foyer is a pair of brass plaques, written in English; to the left recording those who were lost in the First World War; 16 in the Navy and Army 8 in the Mercantile Marine and one man, a Munition Worker. Each is recorded with his name and home address. The

right hand plaque records those who died in the Second World War; 3 in the Navy and Army 3 in the Royal Air Force 8 in the Mercantile Marine. A Pyper 2019

## SOURCES

### OTHER SOURCES

---

**PRN 112309 NAME** LLANGYBI

**TYPE** MEMORIAL HALL **PERIOD** MODERN

**NGR** SN6109453284 **COMMUNITY** Llangybi

**CONDITION** INTACT **STATUS** *None recorded* **EVIDENCE** BUILDING

## SUMMARY

A memorial hall constructed to commemorate lives lost during the First World War.

## DESCRIPTION

A simple corrugated metal hall, with wooden matchboard interior. A slate plaque above the entrance door records, NEUADD GOFFADWRIAETHOL 1926 ADEILADYDD W. WILLIAMS CEFNBEDD. Slated roof, with ornate finials at either gable end and a roof vent on the ridge. Wooden casement windows with three panes in each, plus an overlight of three panes with coloured glass. Inside is a stage at the southeast end, and on the east wall a marble plaque with the names of seven people and their home address. Below a further plaque records those six people killed in the 1939-1945 war. A Pyper 2019

## SOURCES

### OTHER SOURCES

---

**PRN 112310 NAME** PENPARCAU

**TYPE** MEMORIAL HALL **PERIOD** MODERN

**NGR** SN5923179982 **COMMUNITY** Aberystwyth

**CONDITION** INTACT **STATUS** *None recorded* **EVIDENCE** STRUCTURE

## SUMMARY

A Memorial Hall constructed to commemorate lives lost during the First World War and Second World War.

## DESCRIPTION

The Memorial Hall was constructed with marble plaques in black, with a handwritten roll of honour, which is topped with an image of soldiers and flags framed photographs, shale/slate plaque incised with silver lettering. R.Davey based on W.Rathouse 2018.

## SOURCES

### OTHER SOURCES

Report Rathouse, W. 2017 Archaeology For Mental Health : War Memorials Survey : Project Report

---

**PRN 112311 NAME** PENRHIWLLAN

**TYPE** MEMORIAL HALL **PERIOD** MODERN

**NGR** SN36594184 **COMMUNITY** Llandyfriog

**CONDITION** NOT KNOWN **STATUS** *None recorded* **EVIDENCE** DOCUMENTARY  
EVIDENCE

## SUMMARY



A memorial hall built to commemorate those who lost their lives in the World Wars.

#### **DESCRIPTION**

A memorial hall rebuilt in 1992, and containing two war memorials with photographs of the fallen of both world wars, both of which were brought here from Aberbanc School when it was closed down. A Pyper based on WWWMP website 2019

#### **SOURCES**

##### **OTHER SOURCES**

Digital Archive Steve John West Wales War Memorial Project Website

---

**PRN 112312 NAME** CAERWEDROS

**TYPE** MEMORIAL HALL **PERIOD** MODERN

**NGR** SN3744755936 **COMMUNITY** Llandysiliogogo

**CONDITION** NEAR DESTROYED **STATUS** *None recorded* **EVIDENCE** DOCUMENTARY EVIDENCE

#### **SUMMARY**

A memorial hall originally constructed to commemorate lives lost during the World Wars.

#### **DESCRIPTION**

The Imperial War Museum register lists the memorial plaque record 6 names of those who lost their lives in the First World War and 7 names for the Second World War. It also mentions that 2007, 1 January: The hall in which the memorial was housed was destroyed by an overnight lighting strike which caused the hall to burn down, the memorial is presumed lost. A Pyper from IWM War Memorials Register, Reference No. 36600.

#### **SOURCES**

##### **OTHER SOURCES**

Online Resource Imperial War Museum

---

**PRN 112313 NAME** SARNAU

**TYPE** MEMORIAL HALL **PERIOD** MODERN

**NGR** SN3137650957 **COMMUNITY** Penbryn

**CONDITION** NOT KNOWN **STATUS** *None recorded* **EVIDENCE** DOCUMENTARY EVIDENCE

#### **SUMMARY**

A memorial hall originally constructed to commemorate lives lost during the World Wars.

#### **DESCRIPTION**

A rendered slate roofed hall with and in raised lettering on the front gable end is written; NEUADD GOFFA PENBRYN 1914-1918 A Pyper based on various sources. 2019

#### **SOURCES**

##### **OTHER SOURCES**

Database War Memorials Trust War Memorials Online

Digital Archive Steve John West Wales War Memorial Project Website

Online Resource Imperial War Museum

---

**PRN 112314 NAME** FELINFACH  
**TYPE** MEMORIAL HALL **PERIOD** MODERN  
**NGR** SN5286655959 **COMMUNITY** Llanfihangel Ystrad  
**CONDITION** NOT KNOWN **STATUS** *None recorded* **EVIDENCE** DOCUMENTARY  
EVIDENCE

**SUMMARY**

A memorial hall built originally to commemorate lives lost during the First World War.  
R.L. Davey

**DESCRIPTION**

A brick and rendered, roughcast hall, five bays long. Slate roofed, with an entrance in the long side and a further entrance in the gable end through a porch. Extended to the rear. A Pyper 2018

**SOURCES**

**OTHER SOURCES**

---

**PRN 112315 NAME** NEW QUAY  
**TYPE** MEMORIAL HALL **PERIOD** MODERN  
**NGR** SN3874659736 **COMMUNITY** New Quay  
**CONDITION** NOT KNOWN **STATUS** *None recorded* **EVIDENCE** DOCUMENTARY  
EVIDENCE

**SUMMARY**

A memorial hall built originally to commemorate lives lost during the First World War.

**DESCRIPTION**

**SOURCES**

**OTHER SOURCES**

---

**PRN 112316 NAME** BORTH  
**TYPE** MEMORIAL HALL **PERIOD** MODERN  
**NGR** SN6091189164 **COMMUNITY** Borth  
**CONDITION** NOT KNOWN **STATUS** *None recorded* **EVIDENCE** DOCUMENTARY  
EVIDENCE

**SUMMARY**

Dedicated to those who fell in WWI and WWII. R. Jones 2018

**DESCRIPTION**

The original hall was gutted by fire and a new hall erected to replace it. A Pyper based on IWM database.

**SOURCES**

**OTHER SOURCES**

Online Resource Imperial War Museum

---

**PRN 112317 NAME** LLWYNCELYN  
**TYPE** MEMORIAL HALL **PERIOD** MODERN

**NGR** SN4429159700 **COMMUNITY** Henfynyw  
**CONDITION** NOT KNOWN **STATUS** *None recorded* **EVIDENCE** DOCUMENTARY  
EVIDENCE

#### **SUMMARY**

A memorial hall originally constructed to commemorate lives lost during the World Wars.

#### **DESCRIPTION**

#### **SOURCES**

#### **OTHER SOURCES**

---

**PRN** 112318 **NAME** TAL-Y-BONT  
**TYPE** MEMORIAL HALL **PERIOD** MODERN  
**NGR** SN6552389513 **COMMUNITY** Ceulanamaesmawr  
**CONDITION** INTACT **STATUS** *None recorded* **EVIDENCE** STRUCTURE

#### **SUMMARY**

A memorial hall originally constructed to commemorate lives lost during the World Wars.

#### **DESCRIPTION**

Talybont Memorial Hall in Ceredigion. It commemorates the First and Second World Wars, as well as soldier lost to the Indonesian-Malaysian conflict of Borneo in 1965. The hall contains interior brick and stone plaques, benefactor stones with a Borneo plaque and roll of honour. The building also contains two outdoor motto stones at the front, inscribed in Welsh with the words 'Er cof am y rhala gollwyd gan gydfilwyr' and 'Er anrhydedd y cynfilwyr'. R.Davey based on Will Rathouse 2018

#### **SOURCES**

#### **OTHER SOURCES**

Report Rathouse, W. 2017 Archaeology For Mental Health : War Memorials Survey : Project Report

---

**PRN** 112319 **NAME** PENALLY  
**TYPE** WAR MEMORIAL **PERIOD** MODERN  
**NGR** SS11789923 **COMMUNITY** Penally  
**CONDITION** INTACT **STATUS** *None recorded* **EVIDENCE** EXTANT STRUCTURE

#### **SUMMARY**

A war memorial constructed to commemorate lives lost during the World Wars.

#### **DESCRIPTION**

A commemorative monolith, rock cut, lies within an area of the village green with a dwarf stone wall arching around the back and sides. In front of the memorial is a paved area with steps leading up to the memorial and plaque. The stone has a polished marble plaque attached to the front face with the inscription in gold incised lettering. Commemorates the six men who died in the First World War and six men who died in the Second. A Pyper August 2018.

#### **SOURCES**

## OTHER SOURCES

---

**PRN** 112321 **NAME** FFALDYBRENIN  
**TYPE** WAR MEMORIAL **PERIOD** MODERN  
**NGR** SN6371144553 **COMMUNITY** Llanycrwys  
**CONDITION** INTACT **STATUS** *None recorded* **EVIDENCE** STRUCTURE

### SUMMARY

Ffaldybrennin War Memorial dedicated to those who fell in the First and Second World Wars.

### DESCRIPTION

The monument has been relocated to this present position. It is a column and finial design, which together with the first two steps of the plinth are made of polished black marble. The first plinth records the 3 names of men who fell, below it is 'Gwell angau - o rwydau'n rhydd - a cholofn, Na chywilydd.' This all inscribed with gold lettering. The rear of the plinth is decorated with a laurel wreath and inscribed in Latin "Finis Coronat Opus". The monumental mason is recorded as E.J-Williams, Llanybyther. Below the black marble is a further sandstone? plinth which records 22 men injured. Two further newer cement plinths below that record the 1939-1945 conflict in which 13 names are recorded. All the inscription is in Welsh. A Pyper & R. Jones 2018

### SOURCES

#### OTHER SOURCES

---

**PRN** 112323 **NAME** NEWPORT  
**TYPE** MEMORIAL HALL **PERIOD** MODERN  
**NGR** SN0538139045 **COMMUNITY** Newport  
**CONDITION** INTACT **STATUS** *None recorded* **EVIDENCE** BUILDING

### SUMMARY

Memorial Hall commemorating WWI. R Jones 2018

### DESCRIPTION

Hall built by public subscription in 1922 to commemorate those who fell in WWI. It is suggested that much of the building's stone was reused from its original location a redundant warehouse on Parrog. From Newport Memorial Halls website. R.Jones 2018

### SOURCES

#### OTHER SOURCES

---

**PRN** 112324 **NAME** RED ROSES  
**TYPE** WAR MEMORIAL **PERIOD** MODERN  
**NGR** SN20451178 **COMMUNITY** Eglwyscummyn  
**CONDITION** INTACT **STATUS** *None recorded* **EVIDENCE** STRUCTURE

### SUMMARY

A memorial garden with a monument located at the north end to commemorate those who lost their lives during the Second World War. A Pyper 2019.

### DESCRIPTION

A grey polished granite monument with five names inscribed.

## SOURCES

### OTHER SOURCES

---

**PRN** 112329 **NAME** PEMBROKESHIRE

**TYPE** HOSPITAL **PERIOD** MODERN

**NGR** SM9539915273 **COMMUNITY** Haverfordwest

**CONDITION** NOT KNOWN **STATUS** *None recorded* **EVIDENCE** DOCUMENTARY  
EVIDENCE

## SUMMARY

Site of the County War Memorial Hospital. Built in 1923 to commemorate those who died in the war. Hospital was funded by voluntary subscriptions and the Red Cross. £30,000 was raised to construct it. A Pyper based on Western Telegraph 05/09/2018.

## DESCRIPTION

## SOURCES

### OTHER SOURCES

Article Lynch, D. 2018 Healthcare in Pembrokeshire: From 'County' to Withybush

---

**PRN** 112330 **NAME** CELLAN

**TYPE** WAR MEMORIAL **PERIOD** MODERN

**NGR** SN60574889 **COMMUNITY** Llanfair Clydogau

**CONDITION** INTACT **STATUS** *None recorded* **EVIDENCE** STRUCTURE

## SUMMARY

An obelisk commemorates the fallen of WWI and WWII.

## DESCRIPTION

The white granite obelisk is set on a two tier base surmounted by the square plinth and obelisk. Inscriptions on base and two sides of obelisk. R. Jones 2018 The stone commemorates two men who died 20th July 1916. A further 14 names are recorded as wounded. A further 27 names are commemorated as serving overseas. A Pyper 2019

## SOURCES

### OTHER SOURCES

---

**PRN** 112331 **NAME** LLANFAIR CLYDOGAU

**TYPE** WAR MEMORIAL **PERIOD** MODERN

**NGR** SN62465126 **COMMUNITY** Llanfair Clydogau

**CONDITION** INTACT **STATUS** *None recorded* **EVIDENCE** STRUCTURE

## SUMMARY

The memorial commemorates those who fell in WWI and WWII.

## DESCRIPTION

The recently constructed (2018) memorial . A blue/grey brick construction topped by a slate roofing. Names are set to the front on slate panels which form part of the structure. R.Jones 2018



## SOURCES

### OTHER SOURCES

---

**PRN** 112332 **NAME** LLANDDEWI BREFI  
**TYPE** WAR MEMORIAL **PERIOD** MODERN  
**NGR** SN6614555615 **COMMUNITY** Llanddewi Brefi  
**CONDITION** INTACT **STATUS** *None recorded* **EVIDENCE** STRUCTURE

### SUMMARY

The monument commemorates those who fell in WWI and WWII and up to 1995.

### DESCRIPTION

The monument is located in the main cemetery of the village facing the main gates. The monument depicts a soldier of standing 'at ease' on top of a pedestal. The structure is constructed of stone, possible sandstone and red marble. The marble holds the Gold leaf text dedicating the monument to WWI and WWII. There is an additional plaque (also of red marble) added taking the dedication from 1945 to 1995. The monument is sited in an small octagonal enclosure surrounded by 8 small obelisk style post linked by chain link. R. Jones 2018 The memorial is broken and needs proper repair, described as having been 'repaired crudely' with a link chain still dangling (as seen in report image). R.Davey based on Will Rathouse 2018.

## SOURCES

### OTHER SOURCES

---

**PRN** 112333 **NAME** TREGARON  
**TYPE** MEMORIAL HALL **PERIOD** MODERN  
**NGR** SN68075970 **COMMUNITY** Tregaron  
**CONDITION** INTACT **STATUS** *None recorded* **EVIDENCE** BUILDING

### SUMMARY

Tregaron memorial hall opened 1922 in commemoration of those who fell in WWI and later included WWII.

### DESCRIPTION

## SOURCES

### OTHER SOURCES

---

**PRN** 112334 **NAME** YSBYTY YSTWYTH  
**TYPE** WAR MEMORIAL **PERIOD** MODERN  
**NGR** SN73177150 **COMMUNITY** Ysbyty Ystwyth  
**CONDITION** INTACT **STATUS** *None recorded* **EVIDENCE** STRUCTURE

### SUMMARY

A Granite column. Located at the centre of the village along the B4343. R.Jones 2018

### DESCRIPTION

The Granite memorial is around 2.2 m in height and consisting of a two stepped base

which is surmounted by a plinth and tapering column. The front face of the column has a carving of a sword of sacrifice. At the base is a smaller marble tablet dedicated to those who fell in WWII. R.Jones 2018 This is a World War I and II memorial in Ceredigion, Aberystwyth located on a roadside. It is an obelisk, constructed in granite (possibly intended to be a Celtic cross, the stone is fractured), inscribed and leaded. The monument is described as 'unusual' in its design as it is a monolith/obelisk but with a pair of notches on either side. It is curved on the outer side, right angled on sides closest to one another. However the Celtic cross memorials in Penparcau, Llanbadan Fawr and Devil's Bridge are different. R.Davey based on W.Rathouse 2018

## SOURCES

### OTHER SOURCES

Digital Archive Steve John West Wales War Memorial Project Website  
Report Rathouse, W. 2017 Archaeology For Mental Health : War Memorials Survey : Project Report

---

**PRN** 112348 **NAME** ST JAMES

**TYPE** WAR MEMORIAL **PERIOD** MODERN

**NGR** SS0648597650 **COMMUNITY** Manorbier

**CONDITION** INTACT **STATUS** *None recorded* **EVIDENCE** STRUCTURE

## SUMMARY

A war memorial in the churchyard to commemorate lives lost during the First World War. A Pyper 2018.

## DESCRIPTION

A Celtic cross monument is positioned to the west St James's Church. Constructed out of white and grey granite with a pecked rustic finish. An inscription on the west face of the plinth is set in a polished panel, it reads, "IN HONOURED MEMORY OF TWENTY-THREE MEN FROM THIS PARISH WHO GAVE THEIR LIVES IN THE GREAT WAR 1914 - 1918 THEY SOUGHT THE GLORY OF THEIR COUNTRY THEY SEE THE GLORY OF GOD"

## SOURCES

### OTHER SOURCES

---

**PRN** 112350 **NAME** BRONWYDD

**TYPE** MEMORIAL HALL **PERIOD** MODERN

**NGR** SN41962468 **COMMUNITY** Bronwydd

**CONDITION** INTACT **STATUS** *None recorded* **EVIDENCE** BUILDING

## SUMMARY

A Memorial Hall, built by the Bronwydd Community Council dedicated to local soldiers who died in WWI and II, as well as a soldier who died in 2010. Written bilingually in Welsh and English. R.L. Davey

## DESCRIPTION

A polished marble? plaque is hung on the external gable wall recording the two men who died in the First World War, a further 6 men who died in the Second World War and a another who died in 2010. The plaque has Bronwydd Community Council engraved on the long side. A Pyper 2019

## SOURCES

### OTHER SOURCES

Digital Archive Steve John West Wales War Memorial Project Website

---

**PRN** 112351 **NAME** LLANPUMSAINT  
**TYPE** MEMORIAL HALL **PERIOD** MODERN  
**NGR** SN41732930 **COMMUNITY** Bronwydd  
**CONDITION** INTACT **STATUS** *None recorded* **EVIDENCE** BUILDING

#### **SUMMARY**

A Memorial Hall, dedicated to the soldiers of WWI. One storey high building, with slate roof. Entrance was added later on as an extension. The original entrance name plaque, is written only in Welsh, stating that the building was opened in 1928, however a newer sign added to the extension is translated in both Welsh and English. R. Davey 2018

#### **DESCRIPTION**

#### **SOURCES**

#### **OTHER SOURCES**

---

**PRN** 112352 **NAME** PENYBONT  
**TYPE** WAR MEMORIAL **PERIOD** MODERN  
**NGR** SN30612708 **COMMUNITY** Trelech  
**CONDITION** INTACT **STATUS** *None recorded* **EVIDENCE** STRUCTURE

#### **SUMMARY**

A black WWI memorial, built in polished black granite with inscription. It is in the shape of a Latin cross, set on a three-step plinth. Written in Welsh. R.L. Davey

#### **DESCRIPTION**

The steps of the plinths area inscribed with the rank, names, place, date and age at death. The monument is set within a small concrete gated enclosure prominently set in front of the doors to the chapel. A Pyper 2019

#### **SOURCES**

#### **OTHER SOURCES**

---

**PRN** 112353 **NAME** LLANDYBIE  
**TYPE** MEMORIAL HALL **PERIOD** MODERN  
**NGR** SN61791517 **COMMUNITY** Llandybie  
**CONDITION** INTACT **STATUS** *None recorded* **EVIDENCE** BUILDING

#### **SUMMARY**

A Memorial Hall with two plaques on either side of the entrance, dedicated to the soldiers of WWI. The foundation stone was laid on December 27th 1924 by Col.D.Watts. Partly written in both Welsh and English. R Davey 2018.

#### **DESCRIPTION**

The hall is constructed with a red brick dwarf wall with roughcast rendered finish above. A two storey hall with wooden casement windows. Extended to the northeast side. The two plaques record that the foundation stone was laid in 1924 (in English) and the second (in Welsh) records the opening of the hall on 5th November 1925, by the Earl Cawdor (who bequeathed the site and the playing field.)

**SOURCES**  
**OTHER SOURCES**

---

**PRN** 112354 **NAME** SARON  
**TYPE** WAR MEMORIAL **PERIOD** MODERN  
**NGR** SN59981236 **COMMUNITY** Llandybie  
**CONDITION** INTACT **STATUS** *None recorded* **EVIDENCE** STRUCTURE

**SUMMARY**

In a memorial garden at the back of the chapel, is a white marble memorial plaque attached to the brick wall of the enclosure, separated from the rest of the graveyard and dedicated to the soldiers of WWI and II.

**DESCRIPTION**

The upper plaque commemorates the memorial to those boys of Saron and the area who lost their lives in the wars 1914 and 1939, "CARIAD MWY NA HYN NID OES" A second plaque records two names of those lost in 1914-1918 and a further 17 lost in 1939-1945. The garden is enclosed by a red brick wall, with gate piers. Other memorials have been added to the garden. A Pyper 2019

**SOURCES**  
**OTHER SOURCES**

---

**PRN** 112355 **NAME** ST EDY  
**TYPE** WAR MEMORIAL **PERIOD** MODERN  
**NGR** SN5886206638 **COMMUNITY** Llanedi  
**CONDITION** INTACT **STATUS** *None recorded* **EVIDENCE** STRUCTURE

**SUMMARY**

The white Granite monument set within the grounds of Llanedi church. The monument is an octagonal column with stylised bud on the top and decorated with a spiralling train of Laurel leaves. The column sits upon a tapered plinth containing the dedications to those who fell during both world Wars. R. Jones 2018

**DESCRIPTION**

The west face of the plinth has embossed crossed rifles with 1914-1919 inscribed either side and below TO THE GLORY OF GOD AND IN LOVING MEMORY OF THE MEN FROM THIS PARISH WHO GAVE THEIR LIVES IN THE GREAT WAR. Below are listed five names then CARIAD MWY NA HWN NID OES GAN NEB SEF BOD I UN ROI EI EINIOES DROS EI GYFEILLION. The north face includes the names of 6 able seamen, two sergeants and two privates. The names of 17 privates are inscribed on the south face. The east face includes later conflicts; two from 1939-45, and two from 1955, and a further 14 names are on an additional plaque which rests against the plinth. A Pyper 2019

**SOURCES**  
**OTHER SOURCES**

---

**PRN** 112356 **NAME** ST MICHAEL AND ALL ANGELS  
**TYPE** Lych Gate **PERIOD** POST MEDIEVAL  
**NGR** SN5274601049 **COMMUNITY** Llanelli Rural  
**CONDITION** INTACT **STATUS** *None recorded* **EVIDENCE** STRUCTURE

### SUMMARY

Timber Lych gate in the style of the Gothic Revival belonging to the church which is Grade II listed. The Lych Gate also contains 4 plaques commemorating those from the village who fell in both World Wars. R. Jones 2018

### DESCRIPTION

On the north side of the lych gate are two white marble plaques built into the wall, the upper one is a commemoration in Welsh, the lower plaque records the names of 17 people who lost their lives in the 1914-1918 war. On the south side of the lych gate the upper plaque is a commemoration in English and below are the names of 16 people who lost their lives in the 1939-1945 war. A Pyper 2019

### SOURCES

#### OTHER SOURCES

---

**PRN** 112357 **NAME** DAFEN

**TYPE** WAR MEMORIAL **PERIOD** MODERN

**NGR** SN5284601102 **COMMUNITY** Llanelli Rural

**CONDITION** INTACT **STATUS** *None recorded* **EVIDENCE** STRUCTURE

### SUMMARY

Memorial Gardens set along Maescanner Road in Dafen. The memorial consists of planters and a memorial stone with a plaque affixed. The garden also contains steel bench seating decorated with Poppies and doves and silhouetted service personnel of the period. The seating is dedicated to those who fell from the First World War to 2018. R. Jones 2018

### DESCRIPTION

### SOURCES

#### OTHER SOURCES

---

**PRN** 112358 **NAME** PWLL

**TYPE** WAR MEMORIAL **PERIOD** MODERN

**NGR** SN4810001110 **COMMUNITY** Llanelli Rural

**CONDITION** INTACT **STATUS** *None recorded* **EVIDENCE** STRUCTURE

### SUMMARY

Memorial gardens set within the village of Pwll close to Holy Trinity Church PRN 5350. R. Jones 2019

### DESCRIPTION

A terraced garden has been laid out and built into the rear retaining stone wall is a polished slate stone around which in Welsh and English records the residents of Pwll who died in the 1st and 2nd World Wars. 18 names are recorded for the 1914-1918 war, and 14 names for the 1939-1945 war. A Pyper 2019

### SOURCES

#### OTHER SOURCES

---

**PRN** 112365 **NAME** NEWCHURCH  
**TYPE** WAR MEMORIAL **PERIOD** MODERN  
**NGR** SN3837424288 **COMMUNITY** Newchurch and Merthyr  
**CONDITION** INTACT **STATUS** *None recorded* **EVIDENCE** EXTANT STRUCTURE

#### **SUMMARY**

A memorial erected to those who lost their lives during the First World War.

#### **DESCRIPTION**

A red granite stone monolith, roughly hewn and rusticated to rear and sides, but smoothly polished panel with inscription with Welsh and English, naming the six men of the parish who fell in the Great War 1914-1919. The inscription records their rank, regiment and address. The panel at the top of the monument has carved the three feathers of 'The Welsh', and below the inscription is carved a dress sword and the military colours. The left side of the monument has a laurel wreath with 1914 carved and to the right 1919 with a laurel wreath. A Pyper 2019

#### **SOURCES**

##### **OTHER SOURCES**

---

**PRN** 112485 **NAME** CAREW  
**TYPE** War Memorial **PERIOD** MODERN  
**NGR** SN0466703653 **COMMUNITY** Carew  
**CONDITION** INTACT **STATUS** *None recorded* **EVIDENCE** EXTANT STRUCTURE

#### **SUMMARY**

Obelisk war memorial to those who died in the First and Second World Wars from Carew.

#### **DESCRIPTION**

War memorial to those who died in the First and Second World Wars from Carew. A pink granite obelisk set on a stepped tiled base, in total approximately 2.7m high. It stands in a small, square enclosure defined by a low stone wall with low railings. It is on a roadside location at the entrance to Carew Castle car park. It commemorates 11 men who died in WW1 and 11 in WW2. According to the Imperial War Museum website it was made by Messrs T W Colley and Sons/Messrs T Picton and was unveiled on 1 September 1929. K Murphy May 2018.

#### **SOURCES**

##### **OTHER SOURCES**

Online Resource Imperial War Museum Carew Memorial Obelisk record

---

**PRN** 112486 **NAME** BEGELLY AND KILGETTY  
**TYPE** War Memorial **PERIOD** MODERN  
**NGR** SN1215907133 **COMMUNITY** Kilgetty-begelly  
**CONDITION** RESTORED **STATUS** *None recorded* **EVIDENCE** MOVED STRUCTURE

#### **SUMMARY**

War memorial to those who died in the First World War from Kilgetty and Begelly.

#### **DESCRIPTION**

A war memorial commemorating those who died in the First World War from Kilgetty and



Begelly. It was originally located in Begelly Zion Methodist Chapel, but was moved to its present location in a small community garden in 2009 (Tenby Observer 26.05.2010). it consists of a marble tablet resting on un-carved stone boulder. The names of six men who died are recorded. K Murphy May 2018.

## **SOURCES**

### **OTHER SOURCES**

Online Resource Imperial War Museum Kilgetty and Begelly Parishioners WW1 memorial

---

**PRN** 112493 **NAME** NEWCASTLE EMLYN

**TYPE** WAR MEMORIAL **PERIOD** MODERN

**NGR** SN3079640733 **COMMUNITY** Newcastle Emlyn

**CONDITION** MOVED **STATUS** *None recorded* **EVIDENCE** MOVED STRUCTURE

## **SUMMARY**

Granite monolith war memorial to the fallen from Newcastle Emlyn in the First War War with the fallen in World War Two added on a separate tablet.

## **DESCRIPTION**

This war memorial consists of a rough granite pillar standing c.2.5m high on a two-step plinth. The names of 31 who died in the First World War from Newcastle Emlyn are inscribed on a smooth panel on the front of the stone. A sloping tablet at the base of the pillar in the same stone type records 13 men who fell in the Second World War. The memorial now stands in a small walled off area by the parish church, but originally it stood on the castle. It was unveiled on 10 October 1923 and rededicated on 1 July 1952. K Murphy June 2018

## **SOURCES**

### **OTHER SOURCES**

Online Resource Imperial War Museum Newcastle Emlyn memorial

---

**PRN** 112709 **NAME** CITY HALL St. DAVIDS

**TYPE** MEMORIAL HALL , TOWN HALL **PERIOD** MODERN

**NGR** SM7542325276 **COMMUNITY** St Davids and The Cathedral Close

**CONDITION** INTACT **STATUS** *None recorded* **EVIDENCE** BUILDING

## **SUMMARY**

St Davids City Hall and Memorial Hall built in the 1920s.

## **DESCRIPTION**

St Davids City Hall and Memorial Hall was probably built in the 1920s. A tablet records that Captain Samuel Roach donated £1000 towards its construction in 1915. It is a two-storey building, cement rendered with stone door and window jambs and a slate roof. The name CITY HALL is carved over the main door with MEMORIAL HALL over a door at the west end of the building. Brass plaques in the memorial hall record the names of the fallen in the First World War and in the Second World War, with other plaques commemorating those who lost their lives whilst serving on lifeboat duty. A stone tablet in the hallway records 'St Davids Memorial Hall and Museum'. K Murphy June 2018

## **SOURCES**

### **OTHER SOURCES**

---

**PRN 112710 NAME** ST. DAVIDS  
**TYPE** MEMORIAL GARDEN **PERIOD** MODERN  
**NGR** SM7532525325 **COMMUNITY** St Davids and The Cathedral Close  
**CONDITION** INTACT **STATUS** *None recorded* **EVIDENCE** STRUCTURE

#### **SUMMARY**

Memorial garden in the centre of St Davids to those who fell in the two World Wars and to those who lost their lives serving on the lifeboat.

#### **DESCRIPTION**

A roughly circular memorial garden 18m across surrounded by a stone wall in the centre of St Davids. Stone plaques either side of the south entrance to the garden simply record the dates 1914-1918 and 1939-1945. Plaques inside the garden are to lifeboat men who lost their lives. K Murphy June 2018

#### **SOURCES**

#### **OTHER SOURCES**

---

**PRN 112711 NAME** ST CLEARS  
**TYPE** WAR MEMORIAL **PERIOD** MODERN  
**NGR** SN2801516420 **COMMUNITY** St Clears  
**CONDITION** INTACT **STATUS** *None recorded* **EVIDENCE** EXTANT STRUCTURE

#### **SUMMARY**

First World War memorial to the fallen of St Clears and District. Also of those who fell in the Second World War. The memorial is a granite obelisk.

#### **DESCRIPTION**

A red granite Celtic cross war memorial in paved area in the centre of St Clears commemorates the fallen of St Clears and District who fell in the First World War. The names of 17 are inscribed on the front face of the base of the obelisk, with six names on the right-hand face and three on the left-hand face. The names of seven who fell in the Second World War have been added to the plinth of the monument. The memorial was unveiled on 9 March 1921. A separate tablet records in the same granite records evacuees from London who were lodged with local families during the Second World War (erected 1990). A white stone memorial is for Group Captain J Ira Jones, a First World War pilot. K Murphy June 2018

#### **SOURCES**

#### **OTHER SOURCES**

---

**PRN 112751 NAME** LLANFARIAN  
**TYPE** WAR MEMORIAL **PERIOD** MODERN  
**NGR** SN5857877378 **COMMUNITY** Llanfarian  
**CONDITION** INTACT **STATUS** *None recorded* **EVIDENCE** STRUCTURE

#### **SUMMARY**

Granite obelisk, 3.5m high commemorating six men from Llanfarian who fell in the First World War, with a separate tablet commemorating three men who died in the Second World War.

#### **DESCRIPTION**

Llanfarian war memorial is located on the main A487(T) road at a junction with a minor

road 700m to the south of Llanfarian village. It consists of a roughly carved granite obelisk on a square plinth, the whole being c.3m high. It is surrounded by iron railings. Metal lettering on a panel at the foot of the plinth reads 'THE LLANFARIAN ROLL OF HONOUR' and below on the plinth 'THESE - ARE THOSE OF US WHO FOUGHT AND DIED FOR THEIR COUNTRY AND FOR LIBERTY AUG 4 1918 - NOV 11 1918. The names of six men from Llanfarian who died in the First World War are recorded on other panels on the plinth. The names of three men who fell in the Second World War are recorded on a sloping tablet immediately outside the railings. K Murphy July 2018 Llanfarian Pentre Bont War Memorial in Aberystwyth, Ceredigion commemorates the First and Second World Wars. It is located on the side of a road and incised in lead, constructed with concrete and surrounded by a fence. The condition of the memorial is described as showing cracks and the WWII section tilted slightly to the right. R.Davey based on W.Rathouse 2018

## **SOURCES**

### **OTHER SOURCES**

Report Rathouse, W. 2017 Archaeology For Mental Health : War Memorials Survey : Project Report

---

**PRN** 112753 **NAME** TALLEY

**TYPE** WAR MEMORIAL **PERIOD** MODERN

**NGR** SN6323732828 **COMMUNITY** Talley

**CONDITION** INTACT **STATUS** *Listed Building 11151 II\** **EVIDENCE** STRUCTURE

## **SUMMARY**

Memorial to the 12 men of Talley Parish who died during First World War. It is a stone cross draped with a laurel wreath standing on octagonal plinth set on three stone steps. It stands in Talley churchyard immediately outside the west end of the church. It is approximately 3m high.

## **DESCRIPTION**

This memorial to the 12 men of Talley Parish who died during the First World War consists of a stone latin stone-cross draped in a wreath. A sword is carved into the face of the cross. The cross stands on an octagonal plinth on the faces of which are inscribed the names of the 12 men, with rank and regiment, and their home address. The inscription is painted black. "GREATER LOVE HATH NO MAN. GREAT WAR 1914-1918 TO THE GLORIOUS MEMORY OF THE MEN OF THIS PARISH WHO MADE THE SUPREME SACRIFICE." on the opposite face is, THIS MONUMENT WAS ERECTED BY PUBLIC SUBSCRIPTION This rests on three octagonal stone steps, the middle step is inscribed, "GWELL ANGAU NA CHWILYDD" The memorial is c.3m high and stands immediately outside the west end of the parish church in the churchyard. It is listed on account of it being within the curtilage of the church. K Murphy June 2018.

## **SOURCES**

### **OTHER SOURCES**

---

**PRN** 112754 **NAME** LETTERSTON

**TYPE** WAR MEMORIAL **PERIOD** MODERN

**NGR** SM9388229605 **COMMUNITY** Letterston

**CONDITION** INTACT **STATUS** *None recorded* **EVIDENCE** STRUCTURE

## **SUMMARY**

War memorial to the 12 men for Letterston who fell in the First World War. It is a grey granite pillar located outside the graveyard of the parish church. Names of six men who

died have been added to the memorial. A marble tablet records the names of the four men from the parishes of Llanfair-Nant-y-Gof and Llanstinan who died in the First World War.

#### **DESCRIPTION**

This war memorial consists of a grey granite pillar c.2m high located in a small quarter-circle paved area flanked by a white-washed wall, carved out of a corner of the graveyard of Letterston parish church. The names of 12 men from the parish who died in the First World War are inscribed on the front of the memorial and the names of six men who died in the Second World War have been added to one side. A white marble tablet mounted on the wall records the names of the four men from the parishes of Llanfair-Nant-y-Gof and Llanstinan who died in the First World War. This was moved from Mamre Chapel, Trecwn in 2009 when the chapel was closed. K Murphy July 2018

#### **SOURCES**

#### **OTHER SOURCES**

---

**PRN** 112755 **NAME** MATHRY

**TYPE** WAR MEMORIAL **PERIOD** MODERN

**NGR** SM8791832003 **COMMUNITY** Mathry

**CONDITION** INTACT **STATUS** *Listed Building 12936 II* **EVIDENCE** STRUCTURE

#### **SUMMARY**

War memorial of grey granite recording the names of the men of Mathry parish who fell in the First World War, with the names of those who died in the Second World War added. It is a pillar topped with a cross and resting on two-step base. It is located to the west of Mathry parish church in the graveyard.

#### **DESCRIPTION**

A grey granite memorial to those who lost their lives from Mathry parish. It is located in the graveyard of the parish church, outside the west end of the church. It is square pillar topped with a stone cross and resting on a two-stepped base, the whole sitting on a grey-stone square base. Total height c.3m. The names of the men who lost their lives during the First World War are inscribed on the west face of the pillar and the names of those who died in the Second World War have been added to the north face. Some of the inscriptions on the lower part of the pillar are weathered and are becoming difficult to read. It is listed on account of it being within the curtilage of the list church. K Murphy July 2018.

#### **SOURCES**

#### **OTHER SOURCES**

---

**PRN** 112756 **NAME** WHITLAND

**TYPE** MEMORIAL HALL **PERIOD** MODERN

**NGR** SN20081665 **COMMUNITY** Whitland

**CONDITION** INTACT **STATUS** *None recorded* **EVIDENCE** BUILDING

#### **SUMMARY**

Whitland memorial hall built in 1927. Single storey, cement-rendered.

#### **DESCRIPTION**

**SOURCES**  
**OTHER SOURCES**

---

**PRN 113515 NAME** MARLOES AND ST BRIDES  
**TYPE** WAR MEMORIAL **PERIOD** MODERN  
**NGR** SM7953108205 **COMMUNITY** Marloes and St Brides  
**CONDITION** INTACT **STATUS** *None recorded* **EVIDENCE** STRUCTURE

**SUMMARY**

Granite cross war memorial in Marloes churchyard to the men of Marloes and St Brides who fell in the First World War with the names of those killed in the Second World War added.

**DESCRIPTION**

A roughly carved grey granite stone cross on a granite double-plinth resting on a concrete slab standing just inside the entrance to Marloes churchyard records the eleven men of Marloes and St Brides who fell in the First World War. The names of two men who died in the Second World War are added to the plinth with a third name on a separate tablet. A sword and regimental badge is carved on the face of the cross that faces the road. The whole stands c.4m high. It was unveiled in 1921. The cross is listed on account of it standing in the curtilage of the church. K Murphy September 2018.

**SOURCES**  
**OTHER SOURCES**

---

**PRN 113516 NAME** DALE  
**TYPE** WAR MEMORIAL **PERIOD** MODERN  
**NGR** SM8056005650 **COMMUNITY** Dale  
**CONDITION** INTACT **STATUS** *None recorded* **EVIDENCE** STRUCTURE

**SUMMARY**

Stone cross in Dale cemetery with the inscription: 'In memory of eight unknown heroes washed up at Dale during the Great War 1914-1918'.

**DESCRIPTION**

Simple stone cross on a double stone plinth set within a rectangular plot of ground surrounded by low iron railings. The cross has the inscription: In memory of eight unknown heroes washed up at Dale during the Great War 1914-1918. The bodies were from the from the the Japanese Ocean Liner SS Hirano Maru that was torpedoed off the Pembrokeshire Coast on 4 October 1918. It is located in Dale cemetery. K Murphy September 2018.

**SOURCES**  
**OTHER SOURCES**

---

**PRN 113517 NAME** ST ISHMAEL'S  
**TYPE** MEMORIAL HALL **PERIOD** MODERN  
**NGR** SM8335907298 **COMMUNITY** St Ishmael's  
**CONDITION** INTACT **STATUS** *None recorded* **EVIDENCE** BUILDING

**SUMMARY**

St Ishmaels Memorial Hall commemorating the six men of the parish who fell during the First World War. It is a single-storey building, cement rendered under a slate roof.

#### DESCRIPTION

This single storey, cement-rendered, slate-roofed hall was erected in memory of the six men of St Ishmaels parish who died in the First World War. The names of the fallen are inscribed on a polished red granite tablet mounted on the external east-facing wall. Four very weathered sandstone blocks built into the wall record that they were laid in July 1921. K Murphy September 2018.

#### SOURCES

#### OTHER SOURCES

---

**PRN** 113518 **NAME** COSHESTON

**TYPE** WAR MEMORIAL **PERIOD** MODERN

**NGR** SN0051003696 **COMMUNITY** Cosheston

**CONDITION** INTACT **STATUS** *None recorded* **EVIDENCE** STRUCTURE

#### SUMMARY

War memorial to the seven men who fell during World War One from Cosheston Parish. It is a roughly shaped red granite pillar with the inscription on a polished panel. It stands immediately outside Cosheston bier house.

#### DESCRIPTION

The names of seven men who died during the First World War are inscribed on a polished panel on an otherwise roughly shaped red granite pillar approximately 2m high. The pillar stands within the curtilage of the 'Funeral Car Tenement' (bier house) alongside the main road through Cosheston village. It is listed on account of being with the curtilage of the tenement. K Murphy September 2018.

#### SOURCES

#### OTHER SOURCES

---

**PRN** 113519 **NAME** ROBESTON WATHEN

**TYPE** WAR MEMORIAL **PERIOD** MODERN

**NGR** SN0842515740 **COMMUNITY** Llawhaden

**CONDITION** INTACT **STATUS** *None recorded* **EVIDENCE** STRUCTURE

#### SUMMARY

War memorial to the 10 men from Robeston Wathen who fell during the First World War, with the names of two who died in the Second World War added. It is a granite cross 4m high located in the churchyard of the parish church.

#### DESCRIPTION

A simple granite cross on a plinth in total c.4m high commemorates the 10 men from Robeston Wathen parish who died during the First World War. Their names are inscribed on a polished panel on the front of the plinth. The names of two men who died during the Second World War are added to a side of the plinth. The memorial stands just inside the entrance to the churchyard. It is listed as it lies within the curtilage of the church. K Murphy September 2018.

#### SOURCES

## OTHER SOURCES

---

**PRN 113521 NAME** CRUNDALE  
**TYPE** WAR MEMORIAL **PERIOD** MODERN  
**NGR** SM9702618185 **COMMUNITY** Rudbaxton  
**CONDITION** INTACT **STATUS** *None recorded* **EVIDENCE** ARCHITECTURAL COMPONENT

### SUMMARY

A slate plaque built into a modern garden wall commemorates eleven men who fell in the First World War and three men who died in the Second World War from the parish of Rudbaxton.

### DESCRIPTION

A slate plaque built into a modern garden wall at the junction of Crundale Row (the B4329) and Cross Lane in Crundale village commemorates eleven men who fell in the First World War and three men who died in the Second World War from the parish of Rudbaxton. The plaque was unveiled in 1980. The names of the same men who died in the First World War are also recorded on a plaque in Rudbaxton parish church. K Murphy September 2018.

### SOURCES

#### OTHER SOURCES

---

**PRN 113522 NAME** ST MARTIN'S  
**TYPE** WAR MEMORIAL **PERIOD** MODERN  
**NGR** SM9515515720 **COMMUNITY** Haverfordwest  
**CONDITION** RESTORED **STATUS** *None recorded* **EVIDENCE** STRUCTURE

### SUMMARY

War memorial to the 42 men who fell during the First World War and 23 during the Second World War from the parish of St Martin, Haverfordwest. The memorial is a calvary in the parish churchyard with the names recorded on a stone plinth.

### DESCRIPTION

The names of 42 men who fell during the First World War and 23 during the Second World War from the parish of St Martin, Haverfordwest are recorded on a stone plinth topped by a calvary. The figure of Christ is metal, the cross wood. It is located in the parish churchyard alongside the path leading to the south door of the church. The wooden elements of the calvary are not original. K Murphy September 2018.

### SOURCES

#### OTHER SOURCES

---

**PRN 114193 NAME** TEMPLETON AND DISTRICT  
**TYPE** WAR MEMORIAL **PERIOD** MODERN  
**NGR** SN1127911442 **COMMUNITY** Templeton  
**CONDITION** INTACT **STATUS** *None recorded* **EVIDENCE** STRUCTURE

### SUMMARY

Templeton and District War memorial to the eight men who died in the First World War,



eight who died in the Second World War and also to the crew members who died after take-off from RAF Templeton in 1943. Erected in 2014.

#### DESCRIPTION

Templeton and District War memorial to the eight men who died in the First World War, eight who died in the Second World War and also to the crew members who died after take-off from RAF Templeton in 1943. It consists of a slate slab mounted on a stone boulder set on a two tier concrete plinth on the edge of a car park in Templeton village. Erected in 2014. K Murphy September 2018.

#### SOURCES

#### OTHER SOURCES

---

**PRN** 114194 **NAME** ANGLE

**TYPE** MEMORIAL HALL , VILLAGE HALL **PERIOD** MODERN

**NGR** SM8662002865 **COMMUNITY** Angle

**CONDITION** INTACT **STATUS** *None recorded* **EVIDENCE** BUILDING

#### SUMMARY

Angle village hall built in 1913. Single-storey, stone-built. Two granite tablets attached to the front of the hall commemorate the men from Angle who served in the First World War.

#### DESCRIPTION

Angle village hall built in 1913. Single-storey, stone-built. Two granite tablets attached to the front of the hall commemorate the men from Angle who served in the First World War. K Murphy September 2018.

#### SOURCES

#### OTHER SOURCES

---

**PRN** 114195 **NAME** HUNDLETON

**TYPE** WAR MEMORIAL **PERIOD** MODERN

**NGR** SM9613600672 **COMMUNITY** Hundleton

**CONDITION** INTACT **STATUS** *None recorded* **EVIDENCE** STRUCTURE

#### SUMMARY

War memorial to the 10 men from Hundleton Parish who died in the First World War and to the three men who died in the Second World War. It is a polished red granite square pillar resting on a three-tier stepped plinth. It stands on the village green.

#### DESCRIPTION

War memorial to the 10 men from Hundleton Parish who died in the First World War and to the three men who died in the Second World War. It is a polished red granite square pillar resting on a three-tier stepped plinth of roughly carved red granite. The names and dedication are inscribed on the sides of the pillar. It stands on the village green. K Murphy September 2018.

#### SOURCES

#### OTHER SOURCES

---

**PRN 114196 NAME** MANORBIER  
**TYPE** WAR MEMORIAL **PERIOD** MODERN  
**NGR** SS0655797840 **COMMUNITY** Manorbier  
**CONDITION** INTACT **STATUS** *None recorded* **EVIDENCE** STRUCTURE

#### **SUMMARY**

Manorbier war memorial. It is a granite celtic cross on a tapered plinth. The names of 27 men from the parish who died in the First World War are recorded on the plinth plus the names of three men who fell in the Second World War. The monument stands in a small walled enclosure immediately outside the entrance to Manorbier Castle.

#### **DESCRIPTION**

Grey-granite roughly-carved celtic cross on a tapered plinth. The names of 27 men from Manorbier parish who died in the First World War are recorded on the plinth plus the names of three men who fell in the Second World War. The lettering is in raised metal characters. The cross with plinth stands to c.3m in height. It stands in a small enclosure surrounded by low walls and metal railings immediately outside the entrance to Manorbier Castle. K Murphy September 2018.

#### **SOURCES**

#### **OTHER SOURCES**

---

**PRN 114197 NAME** ST FLORENCE  
**TYPE** WAR MEMORIAL **PERIOD** MODERN  
**NGR** SN0824201216 **COMMUNITY** St Florence  
**CONDITION** INTACT **STATUS** *None recorded* **EVIDENCE** STRUCTURE

#### **SUMMARY**

Red granite obelisk war memorial to the seven men of St Florence Parish who fell in the First World War with the names of three men who died in the Second World War added. It stands in the parish church cemetery just inside the entrance.

#### **DESCRIPTION**

A polished red granite obelisk stands on a tapering red granite pedestal on a three-step stone plinth commemorates seven men from St Florence Parish who fell in the First World War with the names of three men who died in the Second World War added. It stands in total to c.4m high and is located just inside the parish church cemetery close to the entrance. A section of the stone wall surrounding the cemetery has been lowered and replaced by iron railings so that the memorial is visible from outside. This view is now largely obscured by a garage. K Murphy September 2018.

#### **SOURCES**

#### **OTHER SOURCES**

---

**PRN 114198 NAME** ST ISSELLS SAUNDERFOOT  
**TYPE** WAR MEMORIAL **PERIOD** MODERN  
**NGR** SN1324805756 **COMMUNITY** Saundersfoot  
**CONDITION** INTACT **STATUS** *None recorded* **EVIDENCE** STRUCTURE

#### **SUMMARY**

War memorial to the 24 men from St Issells parish who fell in the First World War with the names of 18 men who died in the Second World War added. It is a stone wheel cross on a long shaft mounted on a pedestal located in a small walled area in the centre of a

road junction.

### DESCRIPTION

War memorial to the 24 men from St Issells parish (which includes Saundersfoot) who fell in the First World War with the names of 18 men who died in the Second World War added. It consists of a stone wheel cross on top of a long, slender tapering shaft resting on a square stone pedestal, mounted on a stepped stone plinth. The whole is c.5m high. It is located in a small paved area surrounded by low stone walls of late 20th century/early 21st century date – this is now essentially a traffic island at the junction of minor roads by the parish church. A dedication is inscribed into the stone of the pedestal and plinth. The names of the fallen are inscribed on black marble tables attached to the pedestal. K Murphy September 2018.

### SOURCES

### OTHER SOURCES

---

**PRN** 114199 **NAME** CLYNDERWEN

**TYPE** WAR MEMORIAL **PERIOD** MODERN

**NGR** SN1206019259 **COMMUNITY** Clynderwen

**CONDITION** INTACT **STATUS** *None recorded* **EVIDENCE** STRUCTURE

### SUMMARY

War memorial to 'Our Boys' (10) who died in the First World War with the names of four men who died in the Second World War added. It is a black and grey granite column on a three-tier plinth located just off the main road through Clynderwen village close to the railway station.

### DESCRIPTION

War memorial to 'Our Boys' (10) who died in the First World War with the names of four men who died in the Second World War added. It consists of a grey granite column topped with a finial resting on a wider, squatter, two-tier black granite column. It stands on a white painted three-tier plinth and is surrounded by iron posts connected by iron chains. The total height is c.3.5m. It is located on the approach to Clynderwen railway station just off the main road through the village. The names of those recorded are from the surrounding area, not just from Clynderwen. It was unveiled on 22 September 1922. K Murphy September 2018.

### SOURCES

### OTHER SOURCES

---

**PRN** 114200 **NAME** MAENCLOCHOG

**TYPE** WAR MEMORIAL **PERIOD** MODERN

**NGR** SN0833727380 **COMMUNITY** Maenclochog

**CONDITION** INTACT **STATUS** *None recorded* **EVIDENCE** STRUCTURE

### SUMMARY

War memorial to those locally who lost their lives in war. It is a bronze plaque attached to a stone boulder located immediately outside Maenclochog churchyard. There are no names on the memorial.

### DESCRIPTION

**SOURCES**  
**OTHER SOURCES**

---

**PRN** 114201 **NAME** EGLWYSWRW  
**TYPE** WAR MEMORIAL **PERIOD** MODERN  
**NGR** SN1418938497 **COMMUNITY** Eglwyswrw  
**CONDITION** INTACT **STATUS** *None recorded* **EVIDENCE** STRUCTURE

**SUMMARY**

War memorial to 24 men who died in the First World War and to one who died in the Second World War. It consists of a slate slab incised with a Welsh dragon. The names of the fallen are inscribed on a polished black granite tablet attached to the slab. In stands in Eglwyswrw churchyard. Unveiled on 10 August 2014.

**DESCRIPTION**

**SOURCES**  
**OTHER SOURCES**

---

**PRN** 114202 **NAME** BLAENPORTH AND ABERPORTH  
**TYPE** WAR MEMORIAL **PERIOD** MODERN  
**NGR** SN2659450640 **COMMUNITY** Aberporth  
**CONDITION** INTACT **STATUS** *None recorded* **EVIDENCE** STRUCTURE

**SUMMARY**

War memorial to the 18 men of Aberporth and Blaenporth parishes who fell in the First World War with the names of 16 who fell in the Second World War added. It is a white marble statue of a soldier holding a rifle facing down on a black granite column. In stands in a cemetery (15893) on the outskirts of Aberporth.

**DESCRIPTION**

War memorial to the 18 men of Aberporth and Blaenporth parishes who fell in the First World War with the names of 16 who fell in the Second World War added. It is a life-size white marble statue of a soldier holding a rifle facing down on a black granite column standing on a grey granite plinth. The dedication and names are inscribed on the column. There is a carving of crossed guns on face of the plinth and an anchor on another. It stands to c.4m high. It is located immediately inside the gates of a cemetery on the outskirts of Aberporth. The soldier faces the gates. Although the statue is marble, including the gun-stock the rest of the gun is another material painted white, possibly a real gun. The makers were T Jones and J Thomas Jones. It was unveiled on 11 August 1922. K Murphy September 2018.

**SOURCES**  
**OTHER SOURCES**

---

**PRN** 114203 **NAME** ST DOGMAELS  
**TYPE** WAR MEMORIAL **PERIOD** MODERN  
**NGR** SN1626446089 **COMMUNITY** St Dogmaels  
**CONDITION** INTACT **STATUS** *None recorded* **EVIDENCE** STRUCTURE

### SUMMARY

War memorial to those who lost their lives during both World Wars from St Dogmaels. It is a cross incised stone on a two tier plinth. Unveiled on 11 November 2014.

### DESCRIPTION

War memorial to those who lost their lives during both World Wars from St Dogmaels. It consists of a boulder with a latin ring-cross incised into one face. The design is based on a cross found at St Dogmaels Abbey. The memorial cross stands on a two tier plinth. It is located at the corner of a road junction. Unveiled on 11 November 2014. Undergoing restoration in 2018. K Murphy September 2018.

### SOURCES

#### OTHER SOURCES

---

**PRN** 114204 **NAME** LLANDUDOCH

**TYPE** MEMORIAL HALL **PERIOD** MODERN

**NGR** SN1632946078 **COMMUNITY** St Dogmaels

**CONDITION** INTACT **STATUS** *None recorded* **EVIDENCE** BUILDING

### SUMMARY

Memorial hall commemorating those who lost their lives from St Dogmaels in both World Wars. Opened on 6th April 1951.

### DESCRIPTION

### SOURCES

#### OTHER SOURCES

---

**PRN** 114205 **NAME** CILGERRAN

**TYPE** WAR MEMORIAL **PERIOD** MODERN

**NGR** SN1944343104 **COMMUNITY** Cilgerran

**CONDITION** INTACT **STATUS** *None recorded* **EVIDENCE** STRUCTURE

### SUMMARY

A slate tablet on a gatepost to Cilgerran Castle records the names of 25 men who fell in the First World War. A tablet on the wall to the right of the gate records the names of nine men who fell in the Second World War.

### DESCRIPTION

A slate tablet on a gatepost to Cilgerran Castle records the names of 25 men who fell in the First World War. Unveiled 9 May 1930. A tablet on the wall to the right of the gate records the names of nine men who fell in the Second World War. Unveiled April 1957. K Murphy September 2018.

### SOURCES

#### OTHER SOURCES

---

**PRN** 114206 **NAME** DINAS CROSS

**TYPE** WAR MEMORIAL **PERIOD** MODERN

**NGR** SN0106538794 **COMMUNITY** Dinas Cross

**CONDITION** INTACT **STATUS** *None recorded* **EVIDENCE** STRUCTURE

### SUMMARY

War memorial to the 13 men of Dinas and district who lost their lives in the First World War and to the 21 men who served in the Second World War. It consists of three red granite tablets attached to a wall in front of the old school alongside the main road through the village.

### DESCRIPTION

### SOURCES

### OTHER SOURCES

---

**PRN** 114207 **NAME** FISHGUARD

**TYPE** WAR MEMORIAL **PERIOD** MODERN

**NGR** SM9575337025 **COMMUNITY** Fishguard and Goodwick

**CONDITION** INTACT **STATUS** *None recorded* **EVIDENCE** STRUCTURE

### SUMMARY

War memorial in the form of a small granite cenotaph to the 62 men from the parish of Fishguard who fell in the First World War and 31 men who fell in the Second World War. It stands in a small paved area on the north side of The Square in the centre of the town.

### DESCRIPTION

War memorial in the form of a small cenotaph to the 62 men from the parish of Fishguard who fell in the First World War and 31 men who fell in the Second World War. It consists of a white granite square column on a white granite pedestal, resting on a stone plinth/step. It stands to c.2m high. The names of the fallen during WW1 are recorded on a bronze plaque attached to the pedestal. The WW2 names on a bronze plaque attached to the plinth. The monument stands in a small raised yard on the north side of The Square in the centre of the town. K Murphy October 2018.

### SOURCES

### OTHER SOURCES

---

**PRN** 114208 **NAME** ST NICHOLAS

**TYPE** WAR MEMORIAL **PERIOD** MODERN

**NGR** SM9012535607 **COMMUNITY** Pencaer

**CONDITION** INTACT **STATUS** *None recorded* **EVIDENCE** STRUCTURE

### SUMMARY

War memorial to the men from Granston and St Nicholas parishes who fell in the First World War. It consists of a white granite cross and pedestal on a three tier plinth standing in a small walled enclosure in the centre of St Nicholas (Tremarchog) village.

### DESCRIPTION

War memorial to the men from Granston and St Nicholas parishes who fell in the First World War. No names are recorded on the memorial, but they are recorded on tablets on a gateway to Llangloffan cemetery 3km to the south (114209). The memorial consists of wheel-headed white granite cross on a pedestal of the same stone, resting on a white painted, three tier plinth, in a small square enclosure surrounded by a low stone wall

topped with iron railings. The memorial stands to c.2.5m high. It stands in the centre of St Nicholas (Tremarchog) village to the front of Bethel Chapel. K Murphy October 2018.

## **SOURCES**

### **OTHER SOURCES**

---

**PRN** 114209 **NAME** LLANGLOFFAN

**TYPE** WAR MEMORIAL **PERIOD** MODERN

**NGR** SM9027632672 **COMMUNITY** Pencaer

**CONDITION** INTACT **STATUS** *None recorded* **EVIDENCE** STRUCTURE

## **SUMMARY**

War memorial to six men who fell in the First World War in the form of white stone tablets built into the brick gate posts of a cemetery near Llangloffan hamlet.

## **DESCRIPTION**

War memorial to six men who fell in the First World War in the form of white stone tablets built into the brick gate posts of a cemetery near Llangloffan hamlet. The tablet on the left-hand gate posts records in Welsh that it is a memorial gate (Porth Goffa); the one on the right records the names of the men. A separate tablets records that the cemetery was donated by Mr Thomas Mathias in January 1920. It would seem that the memorial in St Nicholas 3 km to the north is also to these fallen men (114208). K Murphy October 2018.

## **SOURCES**

### **OTHER SOURCES**

---

**PRN** 114210 **NAME** FERRYSIDE

**TYPE** WAR MEMORIAL **PERIOD** MODERN

**NGR** SN3666610383 **COMMUNITY** St Ishmael

**CONDITION** INTACT **STATUS** *None recorded* **EVIDENCE** STRUCTURE

## **SUMMARY**

War memorial to the seven men who died in the First World War from Ferryside with the names of six men who died in the Second World War added. It is a stone cross standing the churchyard in the centre of the village.

## **DESCRIPTION**

War memorial to the seven men who died in the First World War with the names of six men who died in the Second World War added. It is a wheel-headed cross on a pedestal resting on a plinth, the whole made of white granite and standing to c.2m high. The lettering is in raised metal, and is beginning to decay, though still legible. The dedication is on the shaft of the cross, the WW1 names on the pedestal and the WW2 names on the plinth. It stands in the churchyard in the centre of the village. K Murphy September 2018.

## **SOURCES**

### **OTHER SOURCES**

---

**PRN** 114211 **NAME** FERRYSIDE

**TYPE** WAR MEMORIAL **PERIOD** MODERN



**NGR** SN3665110386 **COMMUNITY** St Ishmael  
**CONDITION** INTACT **STATUS** *None recorded* **EVIDENCE** STRUCTURE

#### **SUMMARY**

Small garden in the corner of a car park with a memorial to the men from Ferryside who served in the Second World War and a memorial to those who died in the Falklands War.

#### **DESCRIPTION**

#### **SOURCES**

#### **OTHER SOURCES**

---

**PRN** 114904 **NAME** CAPEL DEWI  
**TYPE** WAR MEMORIAL **PERIOD** MODERN  
**NGR** SN4519642485 **COMMUNITY** Llandysul  
**CONDITION** INTACT **STATUS** *None recorded* **EVIDENCE** STRUCTURE

#### **SUMMARY**

War memorial to the 12 men from Capel Dewi who fell in the First World War with the name of one man who died in the Second World War added. It is a black granite column topped with urn resting on a pedestal. It stands in a small fenced area in the centre of the village.

#### **DESCRIPTION**

War memorial to the 12 men from Capel Dewi who fell in the First World War with the name of one man who died in the Second World War added. It is a column topped with urn and standing on a pedestal, all in black granite. The pedestal sits on a two-tier stone plinth. In total it is c.3m high. It stands in a very small triangular plot surrounded by iron railings at a road junction in the centre of the village. The inscription is carved into the faces of the pedestal. It was made by Davies of Lampeter and was unveiled on 2 October 1920. K Murphy October 2018.

#### **SOURCES**

#### **OTHER SOURCES**

---

**PRN** 114924 **NAME** LLANDYSUL  
**TYPE** WAR MEMORIAL **PERIOD** MODERN  
**NGR** SN4187640588 **COMMUNITY** Llandysul  
**CONDITION** INTACT **STATUS** *None recorded* **EVIDENCE** STRUCTURE

#### **SUMMARY**

A World War I and II memorial commemorating Ceredigion soldiers, placed in Llandysul between Memorial Park (PRN117012) and a church yard. It is a plaque set into a wall, constructed with stone and incised and painted in white. The imagery used on the memorial is a crucifix. The plaque was unveiled on Saturday 20th September 2016. R.Davey based on W.Rathouse 2018

#### **DESCRIPTION**

#### **SOURCES**

## OTHER SOURCES

Report Rathouse, W. 2017 Archaeology For Mental Health : War Memorials Survey : Project Report

---

### PRN 114930 NAME

**TYPE** WAR MEMORIAL **PERIOD** MODERN

**NGR** SN6115189758 **COMMUNITY** Borth

**CONDITION** INTACT **STATUS** *None recorded* **EVIDENCE** STRUCTURE

### SUMMARY

Graves in Borth, Ceredigion commemorating loss of seamen discovered on the shore.

### DESCRIPTION

Seamen's Graves in Borth, Ceredigion is a memorial that is also a grave located in a churchyard commemorating the lives of three men discovered on the shore washed up from sea. The type of memorial is a grave plot, with recumbent plaque and tombstone (added at a later date), gravelled and surrounded by a low wall. It is a stone slab plaque.

### SOURCES

#### OTHER SOURCES

Report Rathouse, W. 2017 Archaeology For Mental Health : War Memorials Survey : Project Report

---

### PRN 114931 NAME BWLCH-Y-GROES

**TYPE** WAR MEMORIAL **PERIOD** MODERN

**NGR** SN3792146242 **COMMUNITY** Troedyr aur

**CONDITION** INTACT **STATUS** *None recorded* **EVIDENCE** STRUCTURE

### SUMMARY

War memorial commemorating soldiers that fell in WWI and WWII. Located within the graveyard of Bwlchygroes Chapel.

### DESCRIPTION

The monument consists of an obelisk located upon a plinth of two square and tapering blocks. The latter carrying the inscriptions in gold. This in turn lies within a kerbed enclosure. R. Jones 2018

### SOURCES

#### OTHER SOURCES

---

### PRN 114932 NAME CILCENNIN

**TYPE** WAR MEMORIAL **PERIOD** MODERN

**NGR** SN5204960122 **COMMUNITY** Ciliau Aeron

**CONDITION** INTACT **STATUS** *None recorded* **EVIDENCE** STRUCTURE

### SUMMARY

Red Marble Monument dedicated to parishioners who fell in WWI and WWII.

### DESCRIPTION

A red marble column with (broken column style), decorated by two rifles crossed each other at the bottom of the column. Carved inscription and names in gold lettering. From IWM record R.Jones 2018

**SOURCES**  
**OTHER SOURCES**

---

**PRN** 114933 **NAME** SWYDDFFYNNON  
**TYPE** WAR MEMORIAL **PERIOD** MODERN  
**NGR** SN6926066275 **COMMUNITY** Ystrad Meurig  
**CONDITION** INTACT **STATUS** *None recorded* **EVIDENCE** STRUCTURE

**SUMMARY**

Red Marble Memorial dedicated to those who fell in WWI. R. Jones 2018

**DESCRIPTION**

Square base surmounted by plinth, a decorated square column and topped by a Greek style urn. Inscription on the front face of the column in gold text. The monument stands within a Chain link fence placed in front of the memorial. The monument is located at the village crossroads near the local school. R. Jones 2018

**SOURCES**  
**OTHER SOURCES**

---

**PRN** 114934 **NAME** LLANGWYRYFON  
**TYPE** WAR MEMORIAL **PERIOD** MODERN  
**NGR** SN59667052 **COMMUNITY** Llangwryfon  
**CONDITION** INTACT **STATUS** *None recorded* **EVIDENCE** STRUCTURE

**SUMMARY**

Memorial dedicated to those who fell in WWI and WWII. R. Jones 2018

**DESCRIPTION**

The memorial is constructed as a square column topped by a capstone in Black Marble. R. Jones 2018

**SOURCES**  
**OTHER SOURCES**

---

**PRN** 114935 **NAME** LLANARTHNE  
**TYPE** WAR MEMORIAL **PERIOD** MODERN  
**NGR** SN5339820234 **COMMUNITY** Llanarthney  
**CONDITION** INTACT **STATUS** *None recorded* **EVIDENCE** STRUCTURE

**SUMMARY**

Newly erected monument (2018) to those fallen in WWI and WWII. R. Jones 2018

**DESCRIPTION**

A White Granite memorial in the form of a Celtic Cross. The cross is set upon a trapezoidal shaped plinth of the same material. Decorated by pecked relief. Inscriptions set against a polished granite front. Located at the Lychgate outside the graveyard. R. Jones 2018

**SOURCES**

## OTHER SOURCES

---

**PRN** 114936 **NAME** COED FFOS LAS  
**TYPE** WAR MEMORIAL **PERIOD** MODERN  
**NGR** SN4668706157 **COMMUNITY** Llanelli Rural  
**CONDITION** INTACT **STATUS** *None recorded* **EVIDENCE** STRUCTURE

### SUMMARY

This monument is part of the 'First World War Centenary Wood Project' with the Woodland Trust and partners. One of four within the UK and the only one in Wales. The monument not only depicts the effect war has on those who took part in the War but also those all citizens that supported the war effort. R. Jones 2018.

### DESCRIPTION

This monument tells the story of how our woodlands were utilised to aided in that endeavour. The the monument consists of a metal sculpture of a horse and soldier lying on the horse. The horse is manufactured out of differing leaf patters from our native woodlands. There is also a Slate headstone to those who fell, it carries a relief of a soldier crouched in a trench as if protecting himself during bombardment. Also scene depicting a battlefield, the stone faces west and the setting sun. R. Jones 2018.

### SOURCES

#### OTHER SOURCES

Article Woodland Trust 2018 Coed Ffos Las, Wales

---

**PRN** 117010 **NAME** LLANION  
**TYPE** WAR MEMORIAL **PERIOD** MODERN  
**NGR** SM9737503860 **COMMUNITY** Pembroke Dock  
**CONDITION** INTACT **STATUS** *None recorded* **EVIDENCE** STRUCTURE

### SUMMARY

A war memorial located in the middle of Llanion military cemetery.

### DESCRIPTION

### SOURCES

#### OTHER SOURCES

---

**PRN** 117011 **NAME** HENLLAN AMGOED  
**TYPE** WAR MEMORIAL **PERIOD** MODERN  
**NGR** SN17922006 **COMMUNITY** Henllanfallteg  
**CONDITION** INTACT **STATUS** *None recorded* **EVIDENCE** STRUCTURE

### SUMMARY

A war memorial constructed to commemorate those who lost their lives in the First World War.

### DESCRIPTION

An obelisk war memorial located in the grounds of the Congregational chapel. Inscription is written on the east face of the pedestal, "GWELL ANGAU NA CHYWILYDD" IN LOVING REMEMBRANCE OF THE YOUNG MEN CONNECTED WITH THIS CHURCH WHO FELL IN

THE GREAT WAR 1914-1918 THEY DIED FOR THEIR COUNTRY IN THE INTEREST OF  
RIGHTEOUSNESS, JUSTICE AND FREEDOM. Five names with their rank, regiment, place  
and date of death. Monumental mason is inscribed as H.F.DAVIES, CARMN. A Pyper  
2019

#### **SOURCES**

#### **OTHER SOURCES**

---

**PRN 117012 NAME** LLANDYSUL

**TYPE** PUBLIC PARK **PERIOD** MODERN

**NGR** SN41874055 **COMMUNITY** Llandysul

**CONDITION** NOT KNOWN **STATUS** *None recorded* **EVIDENCE** DESIGNED LANDSCAPE

#### **SUMMARY**

A memorial park was established by the people of Llandysul to commemorate those of  
the town who lost their lives in the First World War.

#### **DESCRIPTION**

An account of its opening on the 22nd July 1932, describes the park, formerly known as  
"Cae Maesllan" as, 'about four acres in extent. Bordered on one side by the old oaks of  
Dol'llan and the river Teify, and on the other by rising grounds, from which a good view  
of the town is obtained, it forms a pleasant and restful retreat. In the centre is a shelter,  
with a granite memorial tablet.' Welsh Gazette, Thursday, July 28 1932 accessed on the  
Llandysul History Society website March 2019. The park is still in existence with football  
pitches and a cricket club. A new memorial plaque (PRN114924) was erected and  
dedicated on the 10th of September 2016. A Pyper 2019

#### **SOURCES**

#### **OTHER SOURCES**

---

**PRN 117013 NAME** TUMBLE

**TYPE** WAR MEMORIAL **PERIOD** MODERN

**NGR** SN54061199 **COMMUNITY** Llannon

**CONDITION** INTACT **STATUS** *None recorded* **EVIDENCE** STRUCTURE

#### **SUMMARY**

A war memorial erected to commemorate those who lost their lives in the First World  
War.

#### **DESCRIPTION**

A memorial wall composed of a stone wall inlaid with memorial plaques; from left to  
right, One given by Llannon Community Council to those who lost their lives in the  
Gwendraeth Valley, below to Sgt Michael James Winkler killed in Northern Ireland 1988,  
both of red polished granite. A memorial tablet to 48 men listed by rank and name who  
died in the 1914-1919 war. to the right again is a plaque to those who died in the 1913-  
1945 war and one name is listed. The stone wall is capped with coping stones and a  
paved ceremonial area to the front. A Pyper 2018

#### **SOURCES**

#### **OTHER SOURCES**

---

**PRN 117014 NAME** TALGARREG  
**TYPE** MEMORIAL HALL **PERIOD** MODERN  
**NGR** SN42735109 **COMMUNITY** Llandysiliogogo  
**CONDITION** NOT KNOWN **STATUS** *None recorded* **EVIDENCE** DOCUMENTARY  
EVIDENCE

#### **SUMMARY**

A memorial hall built to commemorate those who lost their lives in the First World War.

#### **DESCRIPTION**

The memorial hall has been rebuilt, and houses two memorial plaques which were originally located at the Pigsaw and Bwlchfyfadfa Chapels. A Pyper based on West Wales War Memorial Project 2019.

#### **SOURCES**

##### **OTHER SOURCES**

Digital Archive Steve John West Wales War Memorial Project Website

---

**PRN 117015 NAME** AMBLESTON  
**TYPE** MEMORIAL HALL **PERIOD** MODERN  
**NGR** SN00072583 **COMMUNITY** Ambleston  
**CONDITION** NOT KNOWN **STATUS** *None recorded* **EVIDENCE** DOCUMENTARY  
EVIDENCE

#### **SUMMARY**

A memorial hall built to commemorate those who lost their lives in the First World War.

#### **DESCRIPTION**

#### **SOURCES**

##### **OTHER SOURCES**

Digital Archive Steve John West Wales War Memorial Project Website

---

**PRN 117016 NAME** BROADHAVEN  
**TYPE** WAR MEMORIAL **PERIOD** MODERN  
**NGR** SM86051351 **COMMUNITY** The Havens  
**CONDITION** NOT KNOWN **STATUS** *None recorded* **EVIDENCE** DOCUMENTARY  
EVIDENCE

#### **SUMMARY**

A war memorial erected to commemorate lives lost during the First World War.

#### **DESCRIPTION**

On a prominent position at the junction of two roads, a war memorial is positioned within a terraced enclosure. A Celtic cross carved out of white granite and set on a plinth. A Pyper 2019

#### **SOURCES**

##### **OTHER SOURCES**

Digital Archive Steve John West Wales War Memorial Project Website

---

**PRN 117017 NAME** CROESGOCH  
**TYPE** WAR MEMORIAL **PERIOD** MODERN

**NGR** SM84233090 **COMMUNITY** Llanrhian  
**CONDITION** NOT KNOWN **STATUS** *None recorded* **EVIDENCE** DOCUMENTARY  
EVIDENCE

#### **SUMMARY**

A war memorial built to commemorate those who lost their lives in the First World War.

#### **DESCRIPTION**

#### **SOURCES**

##### **OTHER SOURCES**

Digital Archive Steve John West Wales War Memorial Project Website

---

**PRN** 117018 **NAME** HERMON BAPTIST

**TYPE** WAR MEMORIAL **PERIOD** MODERN

**NGR** SM95653689 **COMMUNITY** Fishguard and Goodwick

**CONDITION** NOT KNOWN **STATUS** *None recorded* **EVIDENCE** DOCUMENTARY  
EVIDENCE

#### **SUMMARY**

A war memorial built to commemorate those who lost their lives in the First World War.

#### **DESCRIPTION**

A pedestal monument within an enclosure lies within the cemetery of the chapel. A Pyper based on West Wales War Memorials 2019

#### **SOURCES**

##### **OTHER SOURCES**

Digital Archive Steve John West Wales War Memorial Project Website

---

**PRN** 117019 **NAME** GOODWICK

**TYPE** WAR MEMORIAL **PERIOD** MODERN

**NGR** SM94473826 **COMMUNITY** Fishguard and Goodwick

**CONDITION** INTACT **STATUS** *None recorded* **EVIDENCE** STRUCTURE

#### **SUMMARY**

A war memorial erected to commemorate lives lost during the World Wars.

#### **DESCRIPTION**

A new memorial erected on a brick plinth on the side of the road on a paved area. The monument is a monolith with a cross inscribed on it and text to commemorate both World Wars. A Pyper 2019

#### **SOURCES**

##### **OTHER SOURCES**

Digital Archive Steve John West Wales War Memorial Project Website

---

**PRN** 117020 **NAME** HAYSCASTLE

**TYPE** WAR MEMORIAL **PERIOD** MODERN

**NGR** SM90652608 **COMMUNITY** Haycastle

**CONDITION** INTACT **STATUS** *None recorded* **EVIDENCE** DOCUMENTARY EVIDENCE

#### **SUMMARY**



A war memorial erected to commemorate those who lost their lives in the World Wars.

#### **DESCRIPTION**

A monolith memorial erected on a corner plot beside the road. The commemorative text is written on a slate plaque afixed to the stone. A Pyper 2019

#### **SOURCES**

##### **OTHER SOURCES**

Digital Archive Steve John West Wales War Memorial Project Website

---

**PRN** 117021 **NAME** HOOK

**TYPE** MEMORIAL HALL **PERIOD** MODERN

**NGR** SM97861113 **COMMUNITY** Llangwm

**CONDITION** NOT KNOWN **STATUS** *None recorded* **EVIDENCE** DOCUMENTARY EVIDENCE

#### **SUMMARY**

A memorial hall built to commemorate those who lost their lives in the First World War.

#### **DESCRIPTION**

A memorial hall is recorded on the West Wales War Memorials website with a war memorial plaque built into the boundary wall at the entrance. A Pyper based on WWWMP website 2019.

#### **SOURCES**

##### **OTHER SOURCES**

Digital Archive Steve John West Wales War Memorial Project Website

---

**PRN** 117022 **NAME** LITTLE NEWCASTLE

**TYPE** WAR MEMORIAL **PERIOD** MODERN

**NGR** SM98002893 **COMMUNITY** Puncteston

**CONDITION** NOT KNOWN **STATUS** *None recorded* **EVIDENCE** DOCUMENTARY EVIDENCE

#### **SUMMARY**

A war memorial constructed to commemorate those who lost their lives in the First World War.

#### **DESCRIPTION**

A war memorial is located just outside the boundary of St Peters Church at Little Newcastle. The monument is a stone obelisk mounted on a pedestal. It commemorates the lives of 11 men. A Pyper 2019

#### **SOURCES**

##### **OTHER SOURCES**

Digital Archive Steve John West Wales War Memorial Project Website

---

**PRN** 117023 **NAME** LLANGOLMAN

**TYPE** WAR MEMORIAL **PERIOD** MODERN

**NGR** SN12332712 **COMMUNITY** Mynachlog-ddu

**CONDITION** NOT KNOWN **STATUS** *None recorded* **EVIDENCE** DOCUMENTARY EVIDENCE

#### **SUMMARY**

A war memorial to commemorate those who lost their lives in the First World War.

#### DESCRIPTION

A war memorial plaque has been relocated from the former memorial hall and attached to a stone and place within an area of hardstanding within the village green. The marble tablet commemorates two men who died in the First World War and two who died in the Second. The text is written in Welsh and the men are listed by name and home address. A Pyper 2019

#### SOURCES

##### OTHER SOURCES

Digital Archive Steve John West Wales War Memorial Project Website

---

**PRN** 117024 **NAME** LLANGWM

**TYPE** WAR MEMORIAL **PERIOD** MODERN

**NGR** SM99020944 **COMMUNITY** Llangwm

**CONDITION** NOT KNOWN **STATUS** *None recorded* **EVIDENCE** DOCUMENTARY EVIDENCE

#### SUMMARY

A war memorial to commemorate those lost during the First World War.

#### DESCRIPTION

A modern stone-built surround of a tablet which reads; In memory of those from the community who gave their lives in the cause of freedom "they liveth for evermore" A Pyper 2019

#### SOURCES

##### OTHER SOURCES

Digital Archive Steve John West Wales War Memorial Project Website

---

**PRN** 117025 **NAME** ABERCYCH

**TYPE** MEMORIAL HALL **PERIOD** MODERN

**NGR** SN24964015 **COMMUNITY** Manordeifi

**CONDITION** NOT KNOWN **STATUS** *None recorded* **EVIDENCE** DOCUMENTARY EVIDENCE

#### SUMMARY

A memorial hall built to commemorate lives lost in the World Wars.

#### DESCRIPTION

A memorial hall built in 1957 to commemorate lives lost in the World Wars. A brass plaque commemorates the names of those killed, On active Service and those who served during the 1914-1918 war.

#### SOURCES

##### OTHER SOURCES

Digital Archive Steve John West Wales War Memorial Project Website

---

**PRN** 117026 **NAME** ROYAL GARRISON ARTILLERY

**TYPE** PLAQUE **PERIOD** MODERN

**NGR** SM90780579 **COMMUNITY** Milford Haven

**CONDITION** NOT KNOWN **STATUS** *None recorded* **EVIDENCE** DOCUMENTARY EVIDENCE

### SUMMARY

A memorial to the members of the Royal Garrison Artillery who lost their lives in the First World War.

### DESCRIPTION

A stone plaque commemorates 14 men of the Milford Haven companies of the RGA who lost their lives in the First World War. A second brass plaque records that the tablet has been relocated from the now demolished outer wall of the the old Tavr complex in 1995. It now lies within a public gardens. A Pyper 2019

### SOURCES

#### OTHER SOURCES

Digital Archive Steve John West Wales War Memorial Project Website

---

**PRN** 117027 **NAME** PUNCHESTON

**TYPE** WAR MEMORIAL **PERIOD** MODERN

**NGR** SN00852977 **COMMUNITY** Puncteston

**CONDITION** NOT KNOWN **STATUS** *None recorded* **EVIDENCE** DOCUMENTARY  
EVIDENCE

### SUMMARY

A war memorial raised to commemorate those who lost their lives in the First World War.

### DESCRIPTION

A war memorial, situated in the graveyard of St Mary's church, is a heastone with the names of three men killed in the First World War and recording those 14 men who served. Additionally one man who died in the Second World War is added and an additional man who served. A Pyper based on IWM. 2019

### SOURCES

#### OTHER SOURCES

Digital Archive Steve John West Wales War Memorial Project Website  
Online Resource Imperial War Museum

---

**PRN** 117028 **NAME** ROSEMARKET

**TYPE** MEMORIAL HALL **PERIOD** MODERN

**NGR** SM95310862 **COMMUNITY** Rosemarket

**CONDITION** NOT KNOWN **STATUS** *None recorded* **EVIDENCE** DOCUMENTARY  
EVIDENCE

### SUMMARY

A memorial hall, built to commemorate those lives lost during the First World War.

### DESCRIPTION

A timber memorial hall, which may be surplus military hut from the war, houses two marble plaques to commemorate the dead from the First World War. A Pyper 2019

### SOURCES

#### OTHER SOURCES

Digital Archive Steve John West Wales War Memorial Project Website

---

**PRN 117029 NAME** TEGRYN  
**TYPE** WAR MEMORIAL **PERIOD** MODERN  
**NGR** SN22853260 **COMMUNITY** Clydau  
**CONDITION** NOT KNOWN **STATUS** *None recorded* **EVIDENCE** DOCUMENTARY  
EVIDENCE

#### **SUMMARY**

A war memorial erected to commemorate those who lost their lives in the First World War.

#### **DESCRIPTION**

A polished round pedestal monument with an urn on top lies within a small enclosure with low railings.

#### **SOURCES**

##### **OTHER SOURCES**

Digital Archive Steve John West Wales War Memorial Project Website

---

**PRN 117030 NAME** TIERS CROSS  
**TYPE** WAR MEMORIAL **PERIOD** MODERN  
**NGR** SM90551062 **COMMUNITY** Tiers Cross  
**CONDITION** NOT KNOWN **STATUS** *None recorded* **EVIDENCE** DOCUMENTARY  
EVIDENCE

#### **SUMMARY**

A war memorial to commemorate those who lost their lives in the First World War.

#### **DESCRIPTION**

A war memorial consisting of a single monolith with a small polished plaque at its base with the words, TO THOSE WHO FOUGHT FOR FREEDOM located within a community garden. A. Pyper 2019 based on WWWMP website.

#### **SOURCES**

##### **OTHER SOURCES**

Digital Archive Steve John West Wales War Memorial Project Website

---

**PRN 117031 NAME** WOLFSCASTLE  
**TYPE** WAR MEMORIAL **PERIOD** MODERN  
**NGR** SM95792581 **COMMUNITY** Wolfscastle  
**CONDITION** NOT KNOWN **STATUS** *None recorded* **EVIDENCE** DOCUMENTARY  
EVIDENCE

#### **SUMMARY**

A war memorial erected to commemorate those who lost their lives in the First World War.

#### **DESCRIPTION**

A stone obelisk with a crucifix has been erected in the churchyard of St Margaret's, the inscription reads; ERECTED to the memory of brave men from the district who made the supreme sacrifice in the great war 1914-1919 H W HATTON WOLFS CASTLE WILLIAM JOHN PONT YR HAFOD LEVI LAMB HAYS CASTLE T WILLIAM OWEN BILL COTTAGE JOHN REES LORDSHIP SIDNEY REYNISH HAYS CASTLE on a lower plinth is: DR REYNOLDS FISHGUARD A Pyper based on various sources. 2019.

#### **SOURCES**

## OTHER SOURCES

Digital Archive Steve John West Wales War Memorial Project Website  
Online Resource SM9525 : St Margaret's Church and War Memorial, Ford, Wolfscastle

---

**PRN** 117032 **NAME** RHYDPENNAU

**TYPE** MEMORIAL HALL **PERIOD** MODERN

**NGR** SN62798553 **COMMUNITY** Tirymynach

**CONDITION** NOT KNOWN **STATUS** *None recorded* **EVIDENCE** DOCUMENTARY  
EVIDENCE

## SUMMARY

A memorial hall built to commemorate those who lost their lives in the First World War.

## DESCRIPTION

According to the IWM entry the original hall was opened in 1921 and was a military hut brought from Pembrokeshire, the current building has replaced it, but still holds the war memorial. A Pyper based on IWM and WWWMP 2019.

## SOURCES

### OTHER SOURCES

Digital Archive Steve John West Wales War Memorial Project Website  
Online Resource Imperial War Museum

---

**PRN** 117033 **NAME** PEMBROKE DOCK

**TYPE** PUBLIC PARK **PERIOD** MODERN

**NGR** SM97060318 **COMMUNITY** Pembroke Dock

**CONDITION** NOT KNOWN **STATUS** *None recorded* **EVIDENCE** DOCUMENTARY  
EVIDENCE

## SUMMARY

A memorial park established to commemorate those who lost their lives in the First World War.

## DESCRIPTION

Opened on 2 May 1925 by Lady Meyrick and it is said attended by several thousand people. The park is laid out with paths in the shape of a cross with a central flower bed. Recreation facilities include tennis courts, a bowling green and a paddling pool. A Pyper based on IWM and Pembroke Dock Bowling Club history 2019

## SOURCES

### OTHER SOURCES

Article Ken Edwards A Brief History of Pembroke Dock Bowling Club  
Online Resource Imperial War Museum

---

Archaeological data, from the Regional Historic Environment Record, supplied by The Dyfed Archaeological Trust in partnership with Local Authorities, Cadw and the partners of ENDEX DAT, 2011 (and in part Crown, 2011).



# **Threat-Related Assessment of Twentieth Century Military Sites: FIRST WORLD WAR – COMMEMORATION**

DAT Event Record No. 112269

Report No. 2018/26

Cadw Project No. DAT 115B

March 2019

This report has been prepared by Alice Pyper

Position: Heritage Management Project Manager

Signature



Date 23.03.2019

This report has been checked and approved by Ken Murphy  
on behalf of Dyfed Archaeological Trust Ltd.

Swydd / Position: Director

Llofnod / Signature



Date 23.03.2019

As part of our desire to provide a quality service we would welcome any comments you may have on the content or presentation of this report



