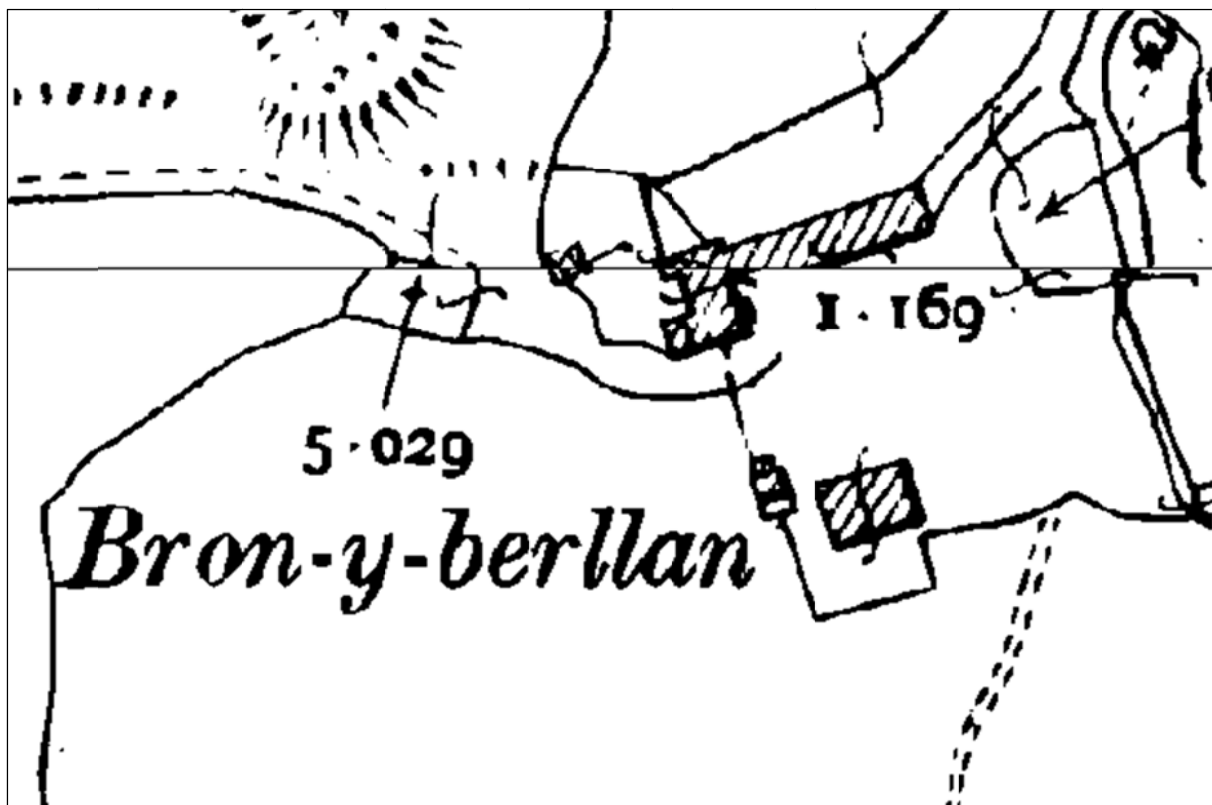


Historic Environment Feature Management Report:

Bron-y-berllan farmstead

Customer Reference Number: A0026389

UID: 311149



Detail from 1905 2nd edition Ordnance Survey map

Maps based upon Ordnance Survey material with the permission of Ordnance Survey on behalf of the Controller of Her Majesty's Stationery Office Crown copyright. Unauthorised reproduction infringes Crown copyright and may lead to prosecution or civil proceedings'. Welsh Assembly Government
100017916. 05.02.13

This management plan has been produced by Dyfed Archaeological Trust Heritage Management to inform the positive management of the identified Priority Historic Environment Feature. The identified management outcome will meet the objective for the Historic Environment Feature Targeted Layer as part of the Glastir Land Management Scheme.

PRN 41068 Name BRON-Y-BERLLAN
Period Post-medieval **Site Type** Farmstead
NGR SN7464766305

Site Description

Bron-y-berllan farmstead is recorded on the 1888 1st edition Ordnance Survey map, including a farmhouse (PRN 41082), pigsty (PRN 41081) and L-shaped farmbuilding . The latter included a cart-shed with hayloft (PRN 41079), a threshing-barn (PRN 94339) with associated wheel-pit (PRN 41069), a possible stable (PRN 94340) and a probable cow shed (PRN 41080). A sheepfold is located on the western edge of the farmstead. This layout appears unchanged on the 1905 2nd edition OS. but modern mapping shows the site to be largely ruinous (M.Ings, 2013)

Management Issues

A recent field visit (Tir Gofal, 2008) and aerial photographs (Ordnance Survey Next Perspectives, 2009) indicate that most elements of the farmstead are ruinous and are being further damaged by vegetation growth, particularly trees growing within the walls of the now roofless buildings, and by falling branches.

The main management issue for this site is the control of damaging vegetation. It is also recommended that the buildings are made weather-tight to help prevent further deterioration. Future maintenance should consider how best to preserve the character of the farmstead as a whole rather than focusing on one particular building at the expense of others. Similar recommendations were made following the Tir Gofal farm visit but it is not known whether or not this was acted upon.

Desired Management Outcome

The management outcome is to maintain the built structural remains of the site in a stable condition.

Management Actions

The following management recommendations are required in order to keep the farmstead remains in a stable condition: Tree and scrub growth is damaging to the long term survival of the site through the disruptive activity of root development.

- Remove mature trees which are at risk of wind throw and could threaten the site through uprooting (root plate damage) or falling limbs.
- Remove any young trees or vegetation growing out of the wall tops but cutting by hand. Do not pull-up by the roots as this is potentially destabilising to masonry bonds. Spot treat to prevent re-growth.
- Cut back any vegetation growing on the masonry by hand in order to retain the visibility of the farm buildings.
- Consolidate areas of loose masonry using a traditional lime mortar mix.

Management Opportunities

Reinstate roof buildings where appropriate/feasible to make them weather-*tight*. Galvanised corrugated-iron, a recognised historic material in its own right, would provide a relatively more economical solution to slate.

PRN 41069 **Name** BRON-Y-BERLLAN
Period Post-medieval **Site Type** Wheel pit
NGR SN7462566295

Site Description

Small wheel pit adjacent to Bron-y-berllan farm carthouse building, measuring 3.5metres x 2.2metres and 2metres deep. Lime mortared walls, in state of collapse. Part of the cast iron wheel frame still stands in the pit. Fed by leat, with water running off via the subterranean tailrace (UWCL 2000)

Management Issues

As for PRN 41068

PRN 41070 **Name** BRON-Y-BERLLAN
Period Post-medieval **Site Type** Enclosure, Sheep fold
NGR SN7459066305

Site Description

Enclosure, probably a sheep fold, recorded on the historic Ordnance Survey maps at Bron-y-berllan farmstead. Recorded in 2000 and 2008 to be of drystone construction (M.Ings, 2013)

Management Issues

As for PRN 41068

PRN 41079 **Name** BRON-Y-BERLLAN
Period Post-medieval **Site Type** Barn, cart shed
NGR SN7463566310

Site Description

Cart-shed, with hay-loft accessed by external steps, recorded during 2008 field visit to Bron-y-berllan farmstead (PRN 41068) The building is now roofed with box-profile corrugated-iron (M.Ings, 2013)

Management Issues

None

PRN 41080 Name BRON-Y-BERLLAN

Period Post-medieval **Site Type** Farm building, cow shed

NGR SN7463466284

Site Description

Long building, part of an L-shaped complex, recorded within Bron-y-berllan farmstead (PRN 41068) on the historic Ordnance Survey maps. Possibly a cow shed. Recorded (2000) to be of lime-rendered masonry, roofless and ruinous. Five entrances were noted during field visit in 2008 (M.Ings, from various sources, 2013)

Management Issues

As for PRN 41068

PRN 41081 Name BRON-Y-BERLLAN

Period Post-medieval **Site Type** Pigsty

NGR SN7463566275

Site Description

The pigsty within Bron-y-berllan farmstead (PRN 41068) comprises a house and open pen built of undressed stone and lime mortar. Recorded in 2000 and 2008 to be ruinous (M.Ings, from various sources, 2013)

Management Issues

As for PRN 41068

PRN 41082 Name BRON-Y-BERLLAN

Period Post-medieval **Site Type** Farmhouse

NGR SN7464066278

Site Description

Farmhouse in an advanced state of decay ,remains of roofing and internal structural material. Constructed of stone, with combination of lime mortar and earth bounding in the walls. Brick-built oven range. A range of outbuildings to North. Small garden to front.

PRN 94339 Name BRON-Y-BERLLAN

Period Post-Medieval **Site Type** threshing barn

NGR SN74626630

Site Description

Threshing-barn recorded within the Bron-y-berllan farmstead (PRN 41068) on the historic Ordnance Survey maps. Associated wheel-pit (PRN 41069) is adjacent to its exterior west wall and a field visit in 2008 noted the remnant of an iron wheel still within it. The two-storey building is now disused and ruinous (M.Ings, 2013)

Management Issues

As for PRN 41068

PRN 94340 **Name** BRON-Y-BERLLAN
Period Post-Medieval **Site Type** stable
NGR SN74636630

Site Description

Possible stable located with Bron-y-Berllan farmstead (PRN 41068). Recorded in 2008 to be a two-storey building, abutted by threshing barn (PRN 94339) to the west and probable cow shed (PRN 41080) to the east. Now roofless and ruinous (M.Ings, 2013)

Management Issues

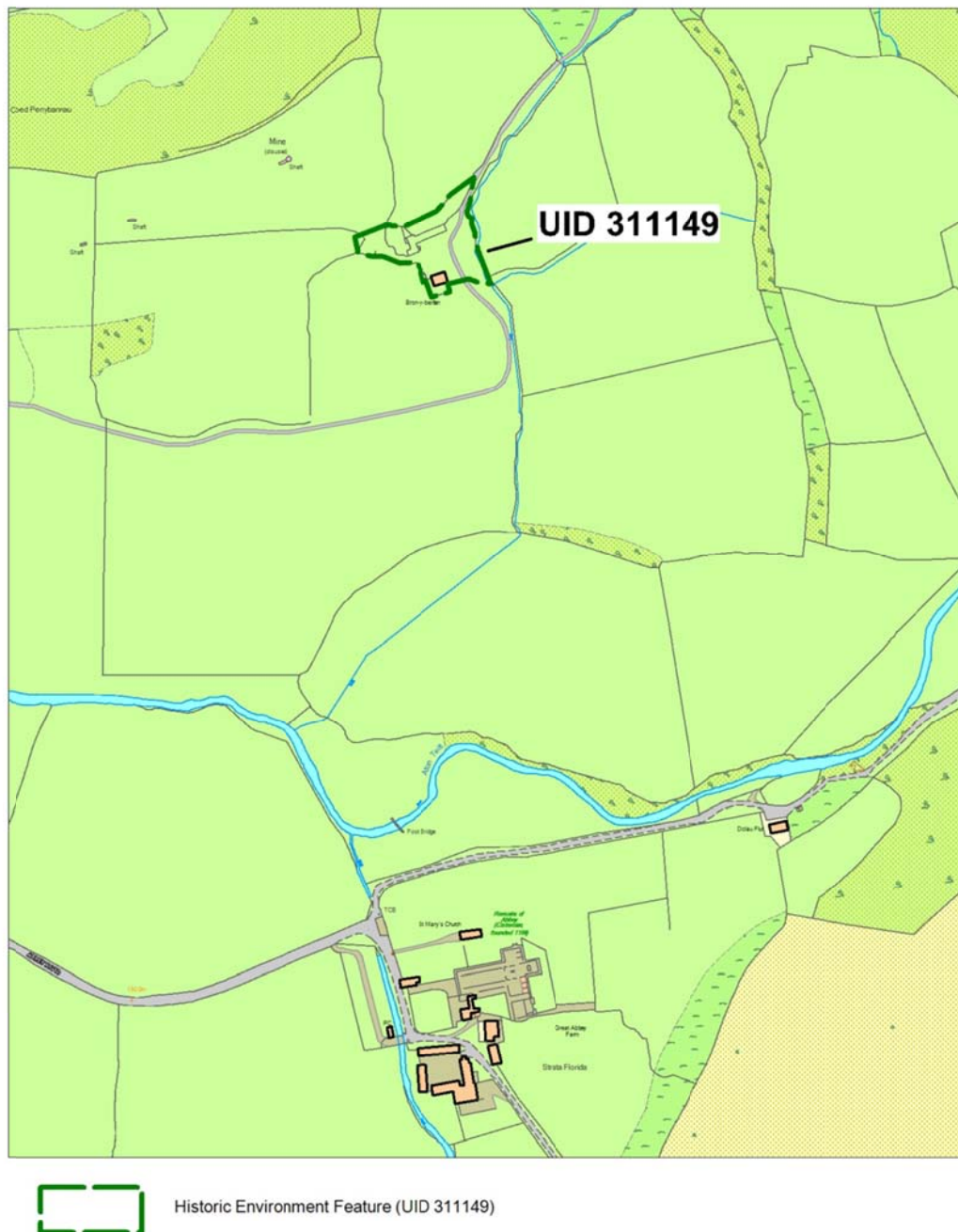
As for PRN 41068

Glastir Whole Farm Code

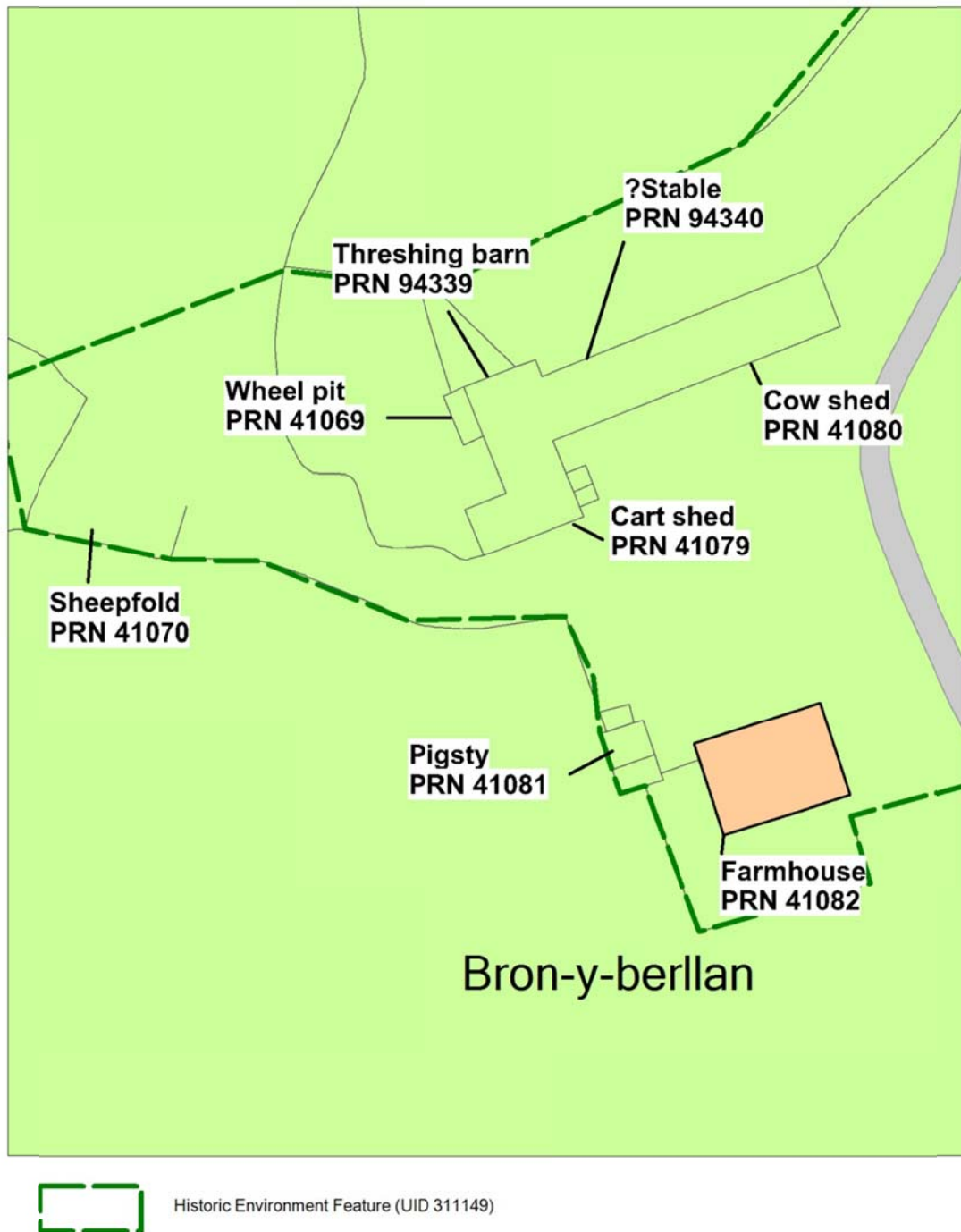
Please also remember that, unless we have indicated otherwise, the Glastir Whole Farm Code should be observed for all historic features on your farm. The Whole Farm Code states that you must not damage any historic feature identified on your agreement map. Definitions of damage to a historic feature include ANY of the following:

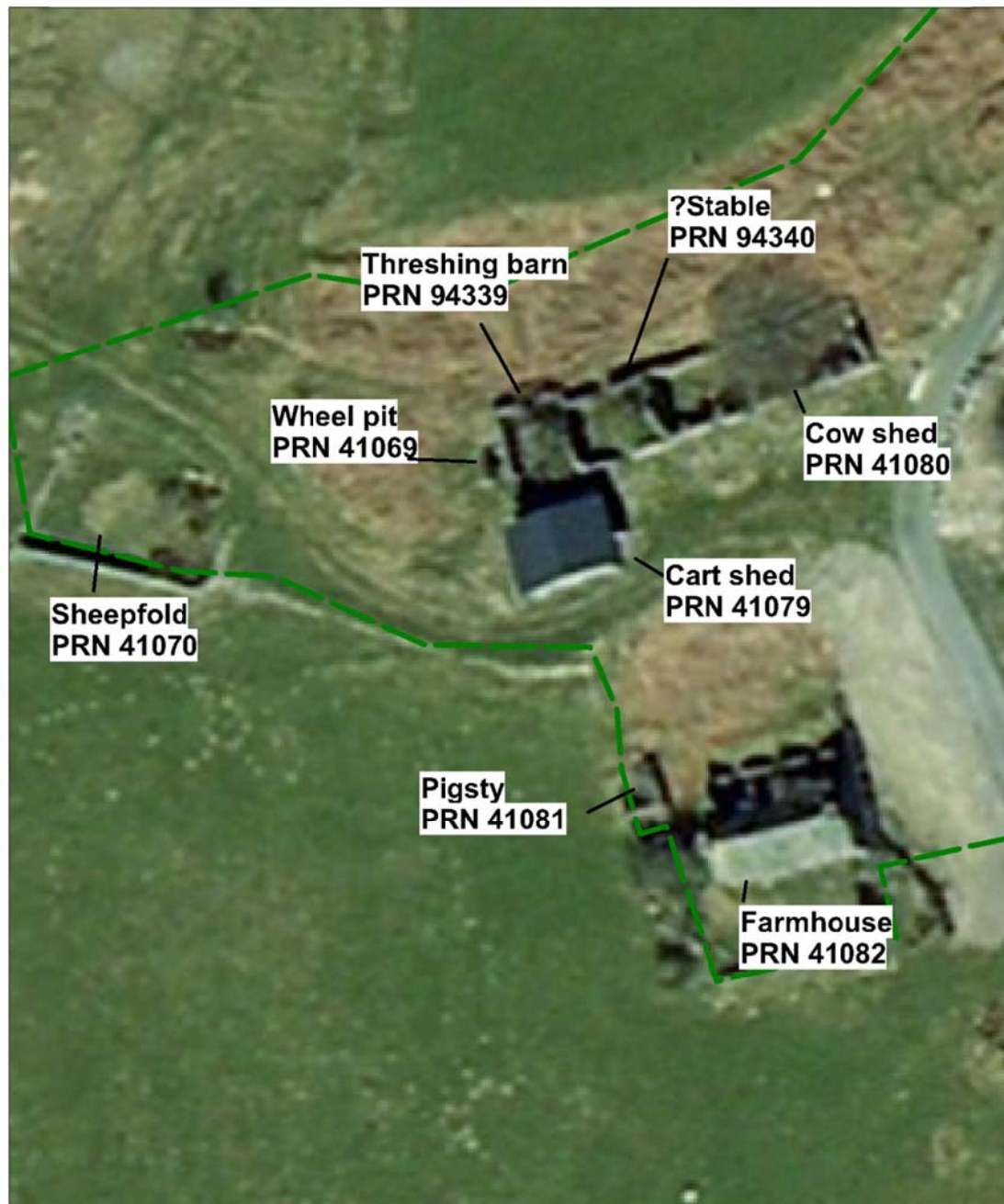
- Ground disturbance or excavation especially extending beneath topsoil.
- Dumping or storage of material, including temporary storage.
- Removal of any material, including stones, soil or subsoil.
- Visible signs of active erosion (loss and disturbance of topsoil) caused by livestock and vehicles or other agricultural practice.
- Planting trees.
- Allowing scrub to develop.
- Ploughing or reseedling.
- Displacing individual stone features.

Location Maps



Maps based upon Ordnance Survey material with the permission of Ordnance Survey on behalf of the Controller of Her Majesty's Stationery Office Crown copyright. Unauthorised reproduction infringes Crown copyright and may lead to prosecution or civil proceedings'. Welsh Assembly Government 100017916. [05.02.13](#)





Historic Environment Feature (UID 311149)

*02.05.13 - HTML file produced for Glastir management report, DAT file number 435.
Dyfed Archaeological Trust, Heritage Management, The Shire Hall, 8 Carmarthen Street,
Llandeilo, Carmarthenshire SA19 6AF.
tel (01558) 823131 , fax (01558) 823133, email info@dyfedarchaeology.org.uk , website
www.dyfedarchaeology.org.uk*

Archaeological data, from the Regional Sites and Monuments Record, supplied by The Dyfed Archaeological Trust in partnership with Local Authorities, Cadw and the partners of ENDEX DAT, 2011 (and in part Crown, 2011).