

Historic Environment Feature Management Report:

Gwndwn-Gwynau farmhouse

Customer Reference Number: A0026726

UID: 311143



'© Next Perspectives. Welsh Assembly Government 2009'

This management plan has been produced by Dyfed Archaeological Trust Heritage Management to inform the positive management of the identified Priority Historic Environment Feature. The identified management outcome will meet the objective for the Historic Environment Feature Targeted Layer as part of the Glastir Land Management Scheme.

PRN 7169 Name GWNDWN-GWYNAU

Period Medieval, Post-medieval **Site Type** Farmhouse

NGR SN73876288

Site Description

Upland farmstead. The ruined dwelling may be in the longhouse tradition. Recorded by RCAHM in 1976 and noted as having a wickerwork chimney hood. (RPS September 2001)

Management Issues

Recent aerial photographs (Ordnance Survey Next Perspectives, 2009) indicate the farmhouse as being ruinous and lying within a grazing area under scrub and tree growth. The main management issue for this site is the control of damaging vegetation which has the potential to damage buried archaeological remains through the disruptive activity of root development, and built structural remains by the prising apart of masonry bonds.

Desired Management Outcome

The management outcome is to maintain the earthwork and built structural remains of the site in a stable and visible condition.

Management Actions

The following management recommendations are required in order to keep the farmhouse remains in a stable condition: Tree and scrub growth is damaging to the long term survival of the site through the disruptive activity of root development.

- Remove mature trees which are at risk of wind throw and could threaten the site through uprooting (root plate damage) or falling limbs.
- Remove any young trees or vegetation growing out of the wall tops but cutting by hand. Do not pull-up by the roots as this is potentially destabilising to masonry bonds. Spot treat to prevent re-growth.
- Cut any scrub back by hand in order to retain the visibility of the cottages.
- If present maintain a canopy of mature trees over the settlement. This will reduce light entering the ground, inhibiting scrubby vegetation growth.

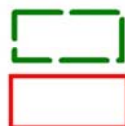
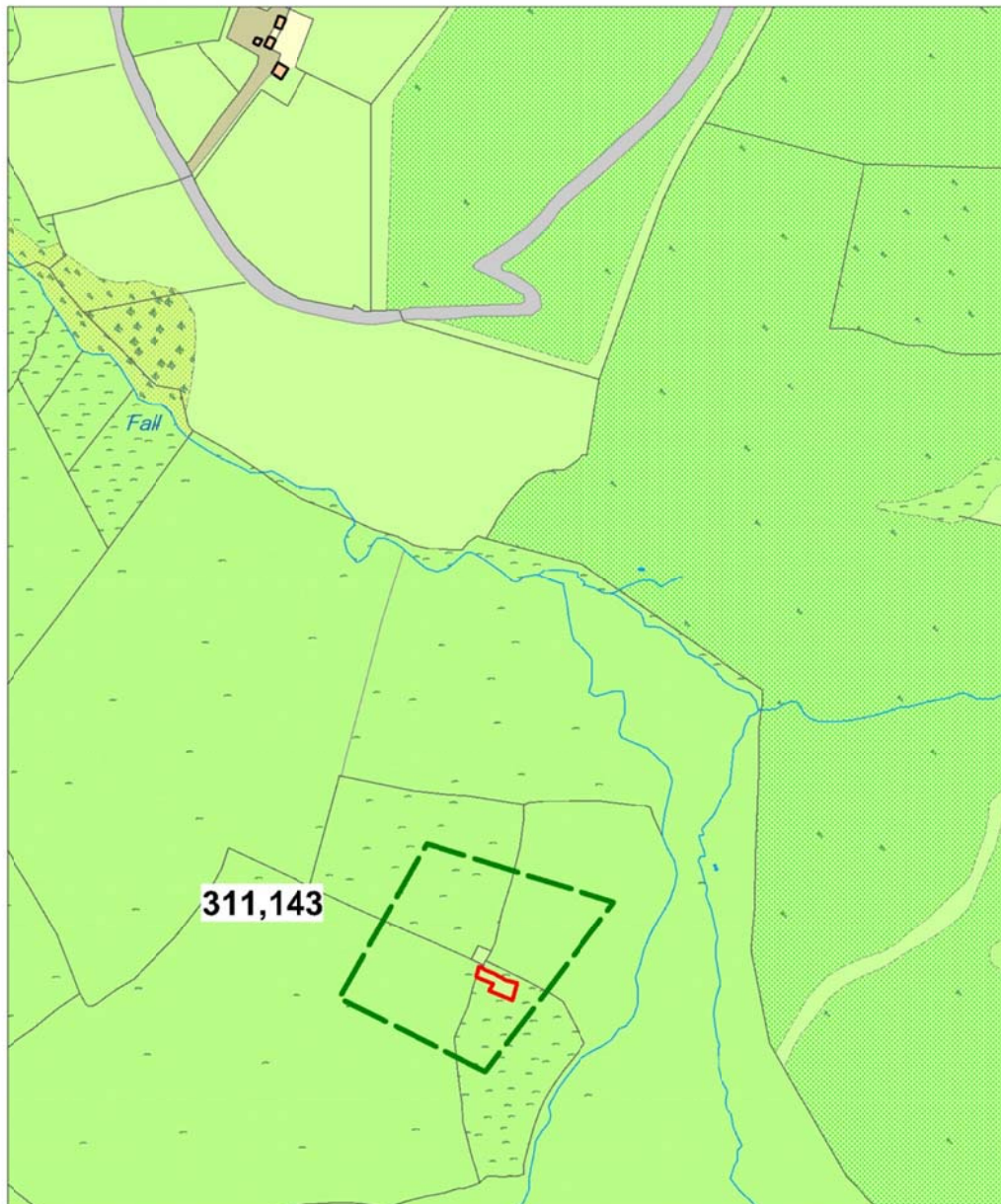
Glastir Whole Farm Code

Please also remember that, unless we have indicated otherwise, the Glastir Whole Farm Code should be observed for all historic features on your farm. The Whole Farm Code states that you must not damage any historic feature identified on your agreement map. Definitions of damage to a historic feature include ANY of the following:

- Ground disturbance or excavation especially extending beneath topsoil.
- Dumping or storage of material, including temporary storage.
- Removal of any material, including stones, soil or subsoil.
- Visible signs of active erosion (loss and disturbance of topsoil) caused by livestock and vehicles or other agricultural practice.

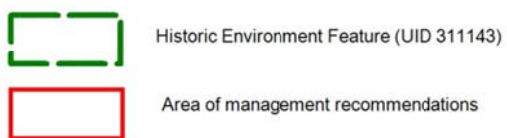
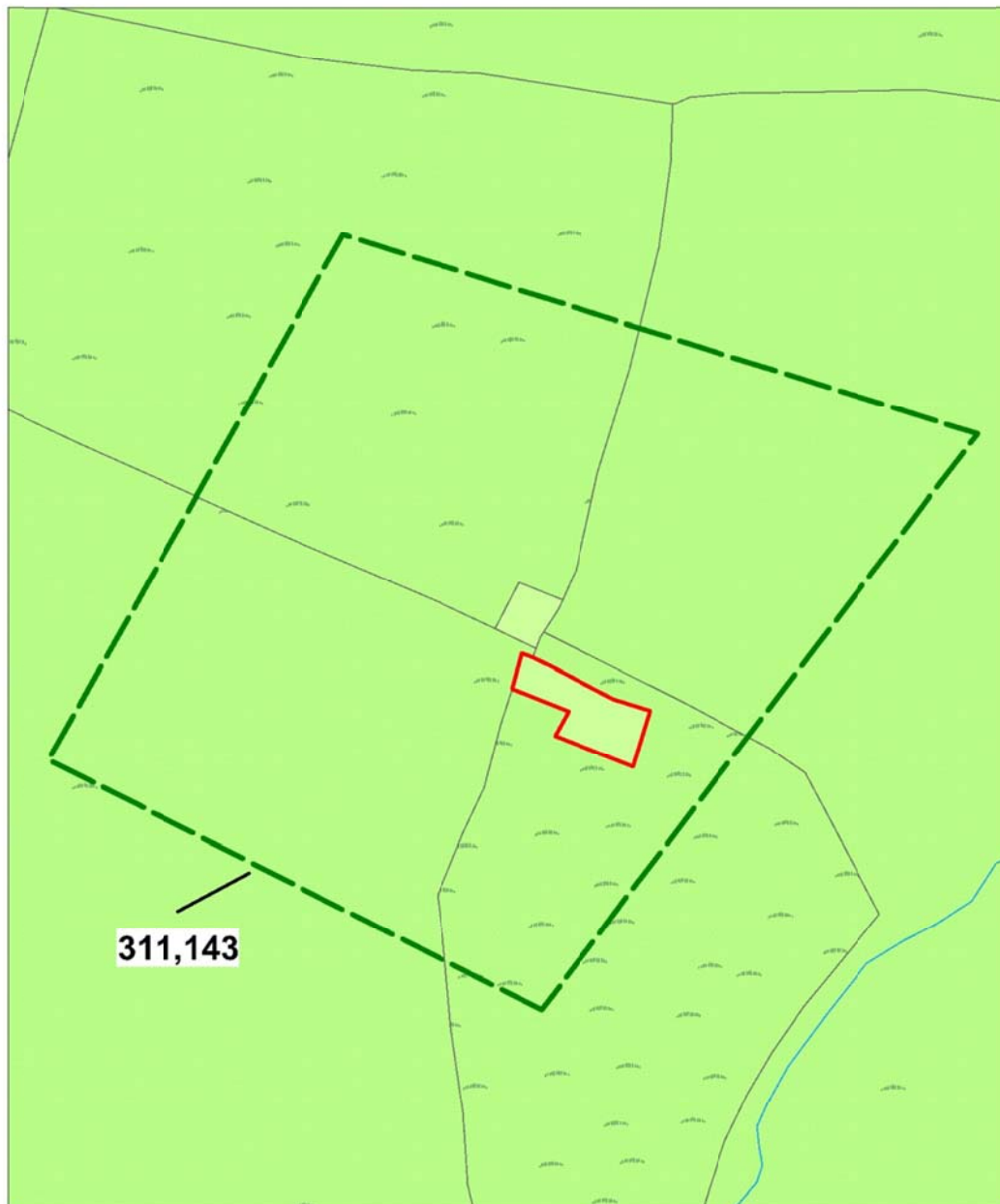
- Planting trees.
- Allowing scrub to develop.
- Ploughing or reseeding.
- Displacing individual stone features.

Location Map

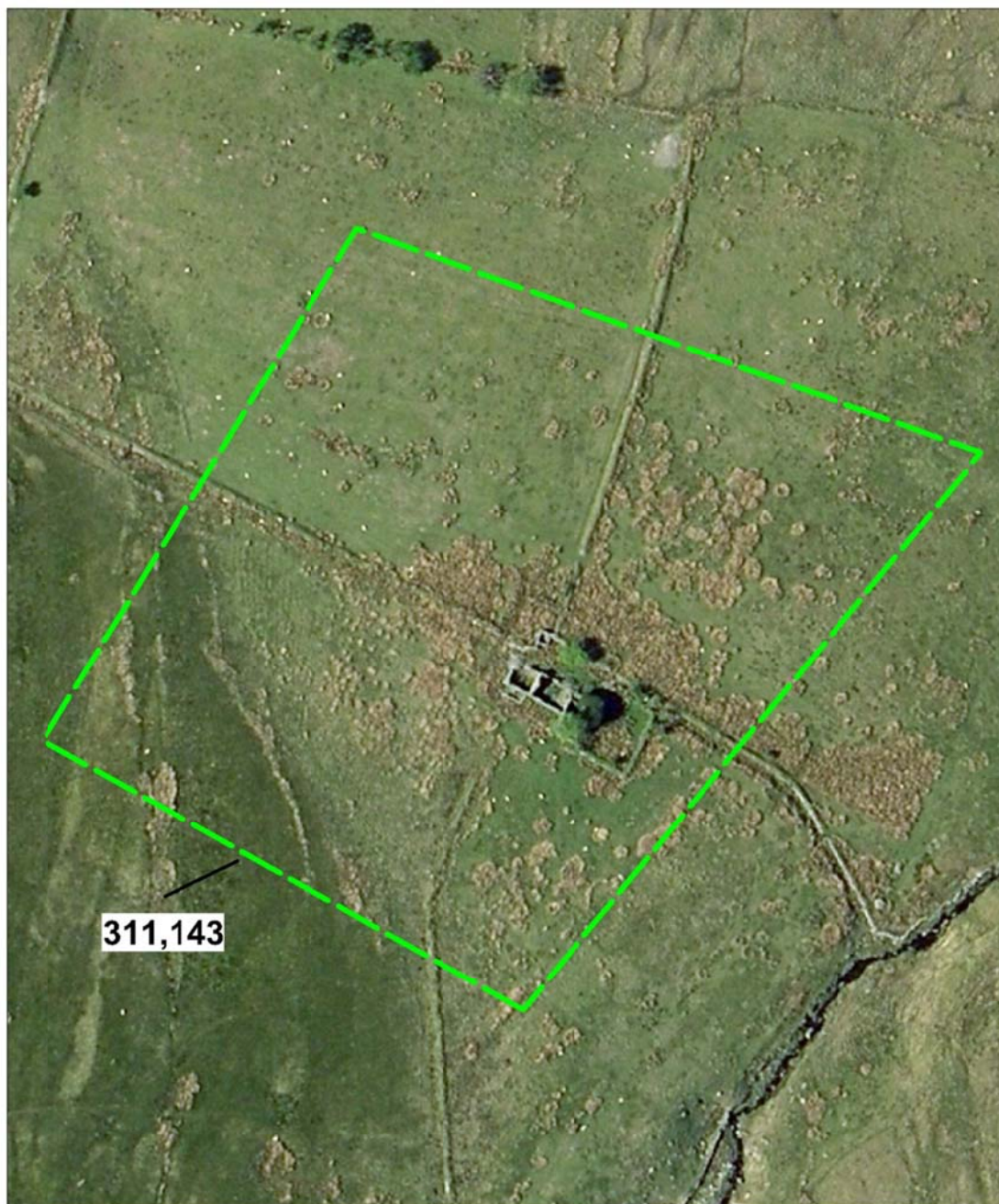


Historic Environment Feature (UID 311143)

Area of management recommendations



Maps based upon Ordnance Survey material with the permission of Ordnance Survey on behalf of the Controller of Her Majesty's Stationery Office Crown copyright. Unauthorised reproduction infringes Crown copyright and may lead to prosecution or civil proceedings'. Welsh Assembly Government 100017916. [04.23.13](#)



311,143



Historic Environment Feature (UID 311143)

23.04.13 - HTML file produced for Glastir management report, DAT file number 423.
Dyfed Archaeological Trust, Heritage Management, The Shire Hall, 8 Carmarthen Street,
Llandeilo, Carmarthenshire SA19 6AF.
tel (01558) 823131 , fax (01558) 823133, email info@dyfedarchaeology.org.uk , website
www.dyfedarchaeology.org.uk

Archaeological data, from the Regional Sites and Monuments Record, supplied by The Dyfed Archaeological Trust in partnership with Local Authorities, Cadw and the partners of ENDEX DAT, 2011 (and in part Crown, 2011).