

Historic Environment Feature Management Report:

Blaen-Waun, Ruined Farmstead

Customer Reference Number: A0030211

UID: 304,116



© DAT 2005

This management plan has been produced by Dyfed Archaeological Trust Heritage Management to inform the positive management of the identified Priority Historic Environment Feature. The identified management outcome will meet the objective for the Historic Environment Feature Targeted Layer as part of the Glastir Land Management Scheme.

PRN 54327 **Name** BLAEN WAUN
Period Post-Medieval **Site Type** Farmstead
NGR SN0135235925

Site Description

A standing but ruined farmstead visible and named as Blaen-Waen on the 1st edition Ordnance Survey map of 1889. The site consists of a mortared rubble built farmhouse, originally 2-storey high with a slate roof. A small barn range is attached to the northern end of the farmhouse, including 3 concrete cattle stalls. Opposite this range stands a detached mortared rubble built barn range. The internal floor and roof of the farmhouse have gone, the interior is rubble filled with a tree growing in the southern end and vegetation covering the rear wall. The attached barn range is greatly ruined. The detached barn range is also greatly ruined and vegetation filled, only the gable and rear walls stand close to their original height. To the front (west) of the farm buildings are two small walled paddocks and the whole complex sits within a wider enclosure. These boundaries survive as ruined walls or grass covered banks. The farmstead complex is not marked on either the old series Ordnance Survey map of 1819 or the tithe map of c1841, suggesting it was built in the mid to late 19th century as it first appears on the 1st edition Ordnance Survey map of 1889. The form of the farmstead is unchanged by the 2nd edition mapping of 1907 but name has altered to Blaen-Waun. It was visited in 2005 and found to be ruinous but standing (Poucher 2005) It is shown on the most recent Ordnance Survey mapping (Mastermap 2011) and recent aerial photographs (Ordnance Survey Next Perspectives 2009) show the walls still survive.

Management Issues

The main management issue for this site is the control of vegetation which has the potential to damage both buried archaeological remains and the built structures through the disruptive activity of root development.

Desired Management Outcome

The management outcome is to maintain the built structural remains and associated boundaries in a stable and visible condition.

Management Actions

The following management actions are required in order to keep the structures including the boundary walls in a stable and visible condition:

- Remove any young trees or vegetation growing out of the wall tops but cutting by hand. Do not pull-up by the roots as this is potentially destabilising to masonry bonds.
- Cut any scrub back by hand in order to retain the visibility of the building ruins.

Management Opportunities

It may be desirable to carry out a programme of masonry consolidation and re-pointing in order to make the structure safe. Contact Dyfed Archaeological Trust for further advice.

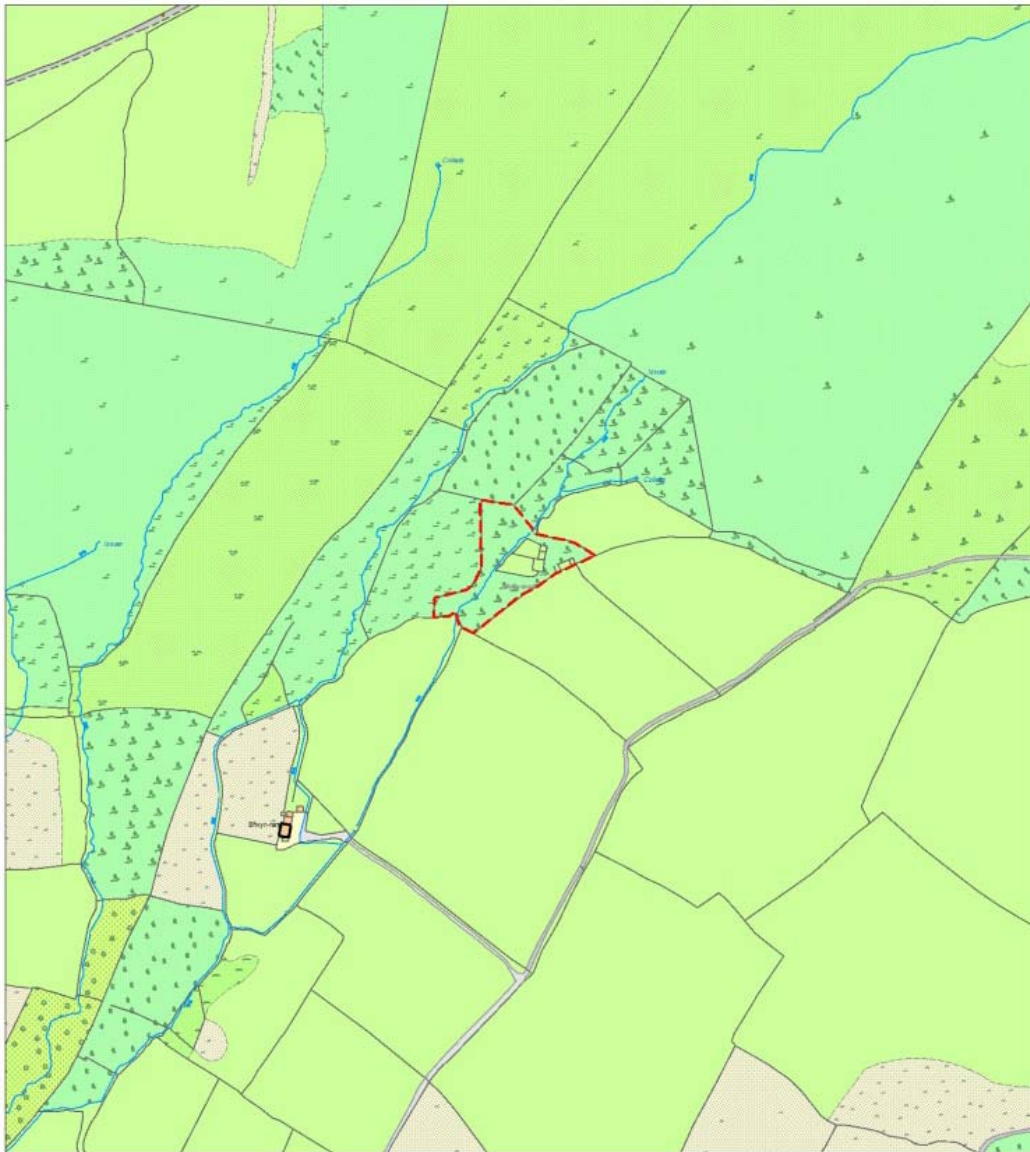
Glastir Whole Farm Code

Please also remember that, unless we have indicated otherwise, the Glastir Whole Farm Code should be observed for all historic features on your farm. The Whole Farm Code states that you must not damage any historic feature identified on your agreement map.

Definitions of damage to a historic feature include ANY of the following:

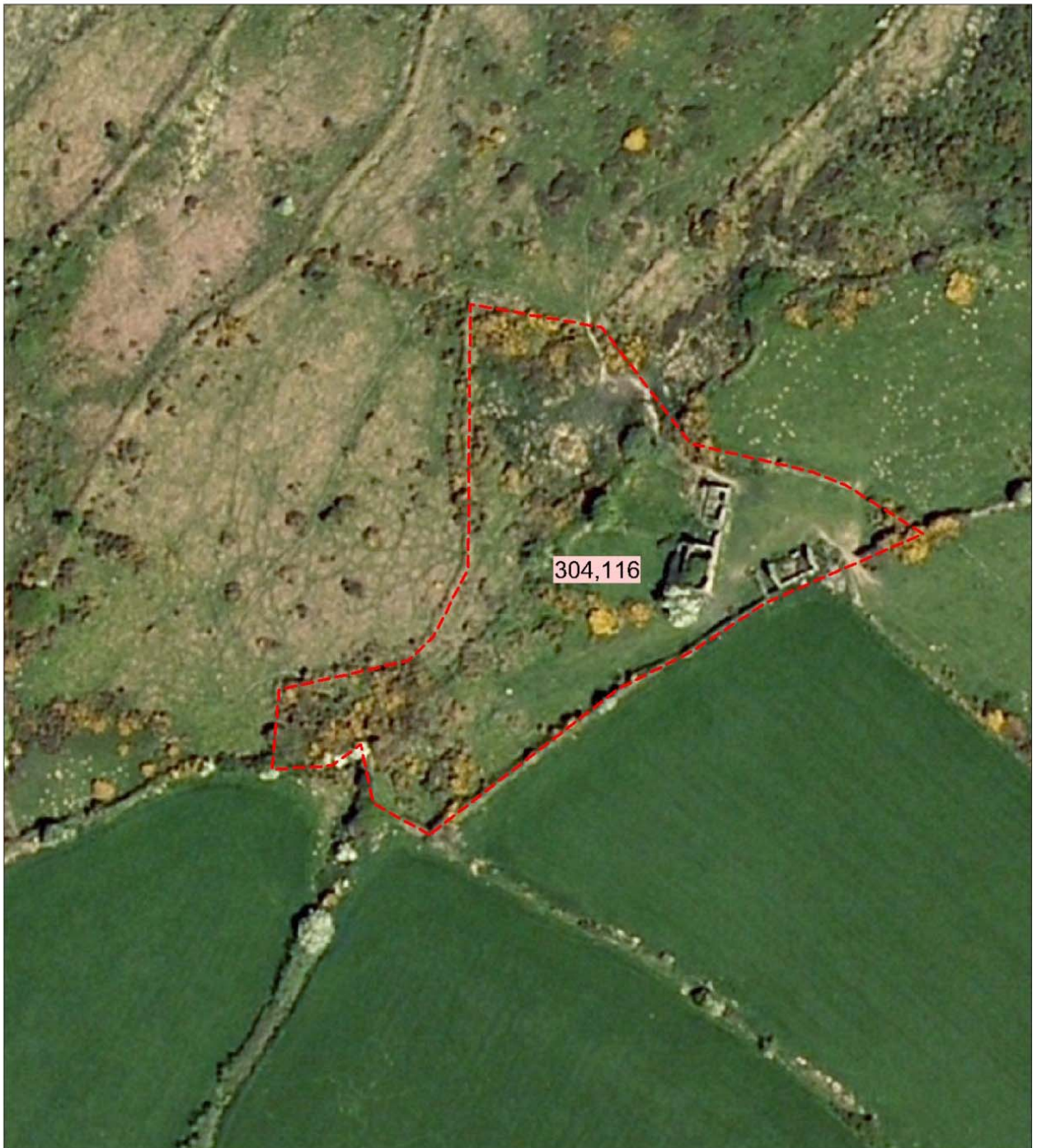
- Ground disturbance or excavation especially extending beneath topsoil.
 - Dumping or storage of material, including temporary storage.
 - Removal of any material, including stones, soil or subsoil.
 - Visible signs of active erosion (loss and disturbance of topsoil) caused by livestock and vehicles or other agricultural practice.
 - Planting trees.
 - Allowing scrub to develop.
 - Ploughing or reseeded.
 - Displacing individual stone features.
-

Location map



Historic Environment Feature UID 304,116

Aerial Photograph



© Next Perspectives, Welsh Assembly Government 2009

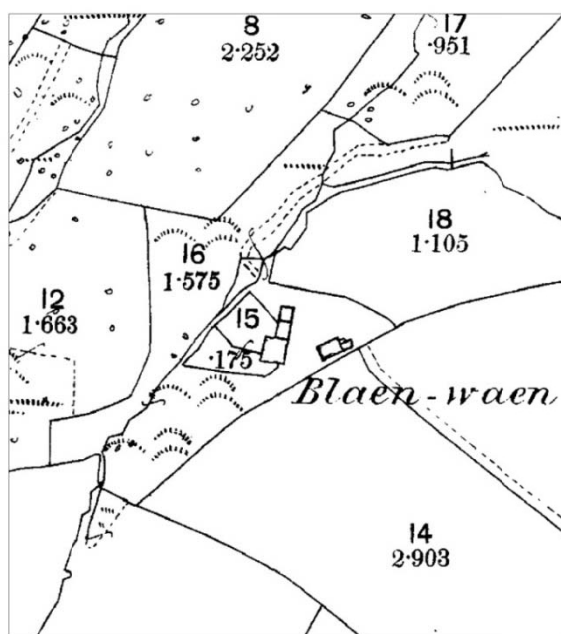


Historic Environment Feature UID 304,116



Barn at Blaen Waun © DAT 2005

1st Edition Ordnance Survey Map



Detail from the Ordnance Survey 1st edition map (1889)
© and database right Crown copyright and Landmark Information Group Ltd (All rights reserved 08/05/2012)

Maps based upon Ordnance Survey material with the permission of Ordnance Survey on behalf of the Controller of Her Majesty's Stationery Office Crown copyright. Unauthorised reproduction infringes Crown copyright and may lead to prosecution or civil proceedings'. Welsh Assembly Government 100017916.
[04.17.13](#)

Archaeological data, from the Regional Sites and Monuments Record, supplied by The Dyfed Archaeological Trust in partnership with Local Authorities, Cadw and the partners of ENDEX DAT, 2011 (and in part Crown, 2011).

[17.04.13](#) - HTML file produced for Glastir management report, DAT file number [413](#).
Dyfed Archaeological Trust, Heritage Management, The Shire Hall, 8 Carmarthen Street, Llandeilo,
Carmarthenshire SA19 6AF.
tel (01558) 823131 , fax (01558) 823133, email info@dyfedarchaeology.org.uk , website
www.dyfedarchaeology.org.uk