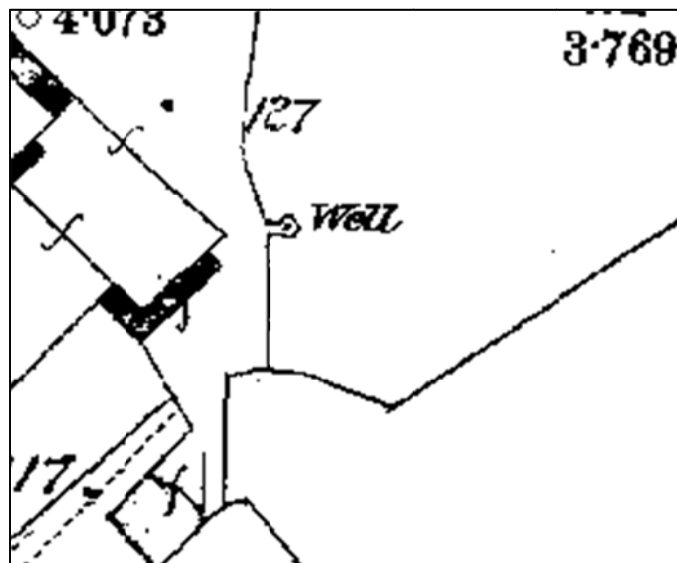


Historic Environment Feature Management Report:

Treginnis Isaf, Well Head

Customer Reference Number: A0029530

UID: 303,431



Detail from the Ordnance Survey 1st edition map (1889) © and database right Crown copyright and Landmark Information Group Ltd
(All rights reserved 08/05/2012)

This management plan has been produced by Dyfed Archaeological Trust Heritage Management to inform the positive management of the identified Priority Historic Environment Feature. The identified management outcome will meet the objective for the Historic Environment Feature Targeted Layer as part of the Glastir Land Management Scheme.

PRN 52033 **Name** Treginnis Isaf
Period Post-Medieval **Site Type** well-head
NGR SM72462391

Site Description

A well head shown on the 1st edition Ordnance Survey map (1889). It is stone built keyhole shaped structure. The most recent aerial photographs (Next Perspectives, 2009) show the structure survives in good condition. It is located at the edge of a pasture field close to a thick hedgerow which is encroaching onto the tail of the structure.

Management Issues

The main management issue is the control of invasive vegetation from the adjacent hedge which has the potential to damage built structural remains by the intrusive action of roots and the prising apart of masonry bonds. Excessive vegetation cover can also obscure the remains from view.

Desired Management Outcome

The desired management outcome is to prevent degradation of the built structural remains and to keep them in a stable and visible condition.

Management Actions

The following management actions are required in order to keep the structure in a stable and visible condition:

- Remove by hand any invasive vegetation from the structure in order to retain the visibility and stability of the structure.
- Spot treat to prevent regrowth.
- Clear and maintain a zone between the structure and the hedge line to prevent further vegetation spread

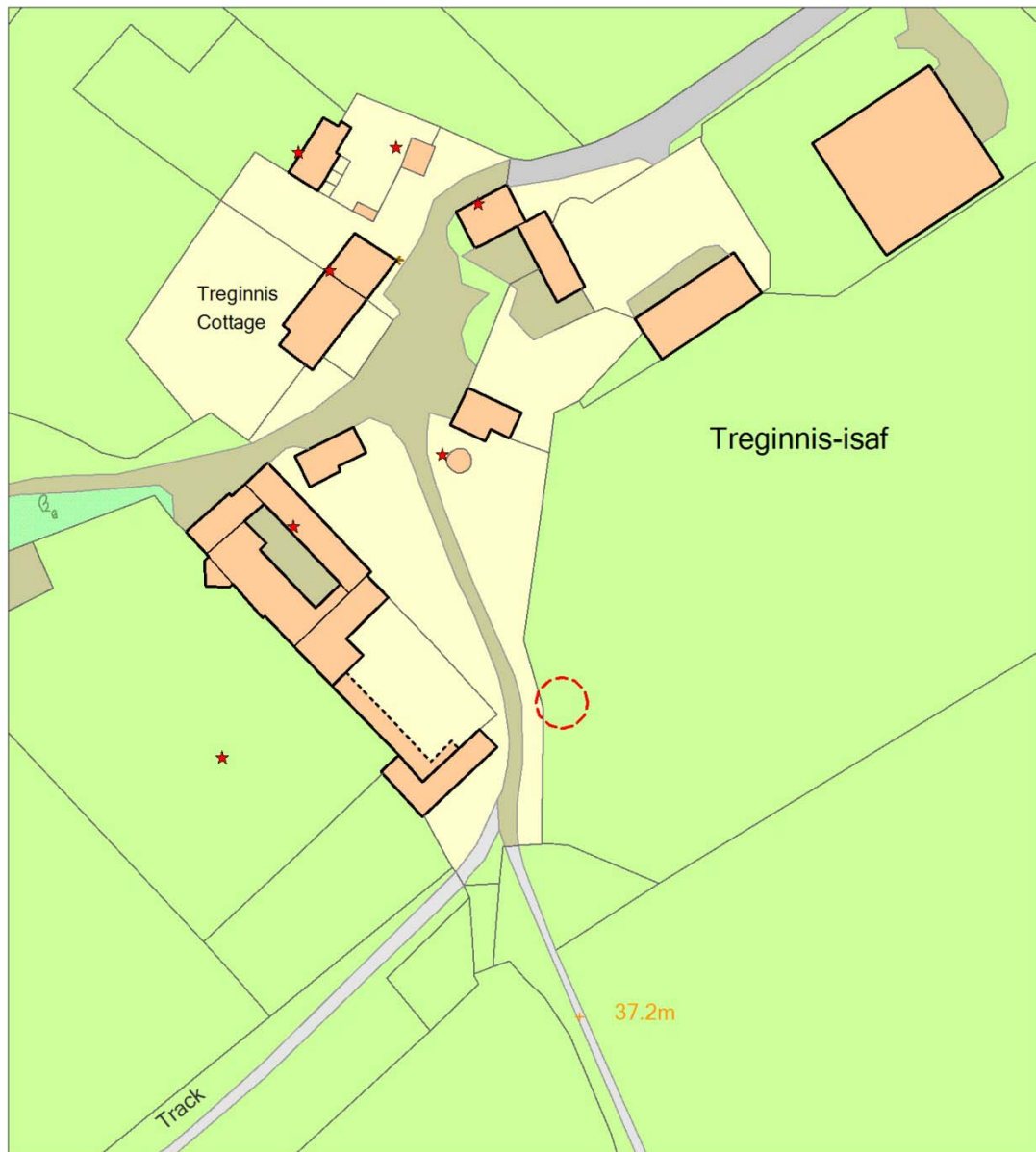
Glastir Whole Farm Code

Please also remember that, unless we have indicated otherwise, the Glastir Whole Farm Code should be observed for all historic features on your farm. The Whole Farm Code states that you must not damage any historic feature identified on your agreement map. Definitions of damage to a historic feature include ANY of the following:

- Ground disturbance or excavation especially extending beneath topsoil.
- Dumping or storage of material, including temporary storage.
- Removal of any material, including stones, soil or subsoil.
- Visible signs of active erosion (loss and disturbance of topsoil) caused by livestock and vehicles or other agricultural practice.
- Planting trees.
- Allowing scrub to develop.

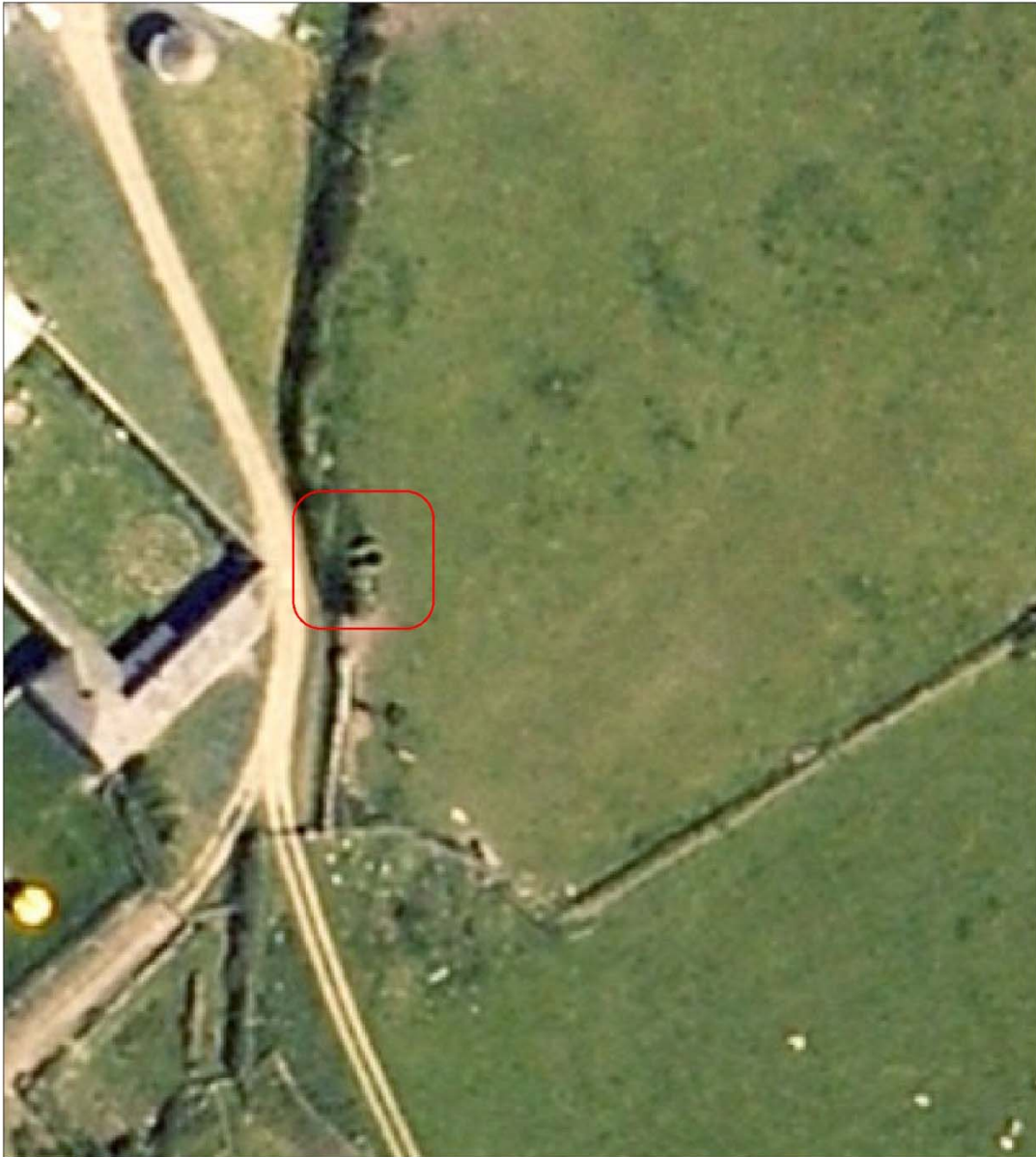
- Ploughing or reseeded.
- Displacing individual stone features.

Location Map



Historic Environment Feature UID 303 431

Aerial Photograph



© Next Perspectives. Welsh Assembly Government 2009

Maps based upon Ordnance Survey material with the permission of Ordnance Survey on behalf of the Controller of Her Majesty's Stationery Office Crown copyright. Unauthorised reproduction infringes Crown copyright and may lead to prosecution or civil proceedings'. Welsh Assembly Government 100017916.
[04.16.13](#)

Archaeological data, from the Regional Sites and Monuments Record, supplied by The Dyfed Archaeological Trust in partnership with Local Authorities, Cadw and the partners of ENDEX DAT, 2011 (and in part Crown, 2011).

[16.04.13](#) - HTML file produced for Glastir management report, DAT file number [410](#).

Dyfed Archaeological Trust, Heritage Management, The Shire Hall, 8 Carmarthen Street, Llandeilo, Carmarthenshire SA19 6AF.

tel (01558) 823131 , fax (01558) 823133, email info@dyfedarchaeology.org.uk , website www.dyfedarchaeology.org.uk

