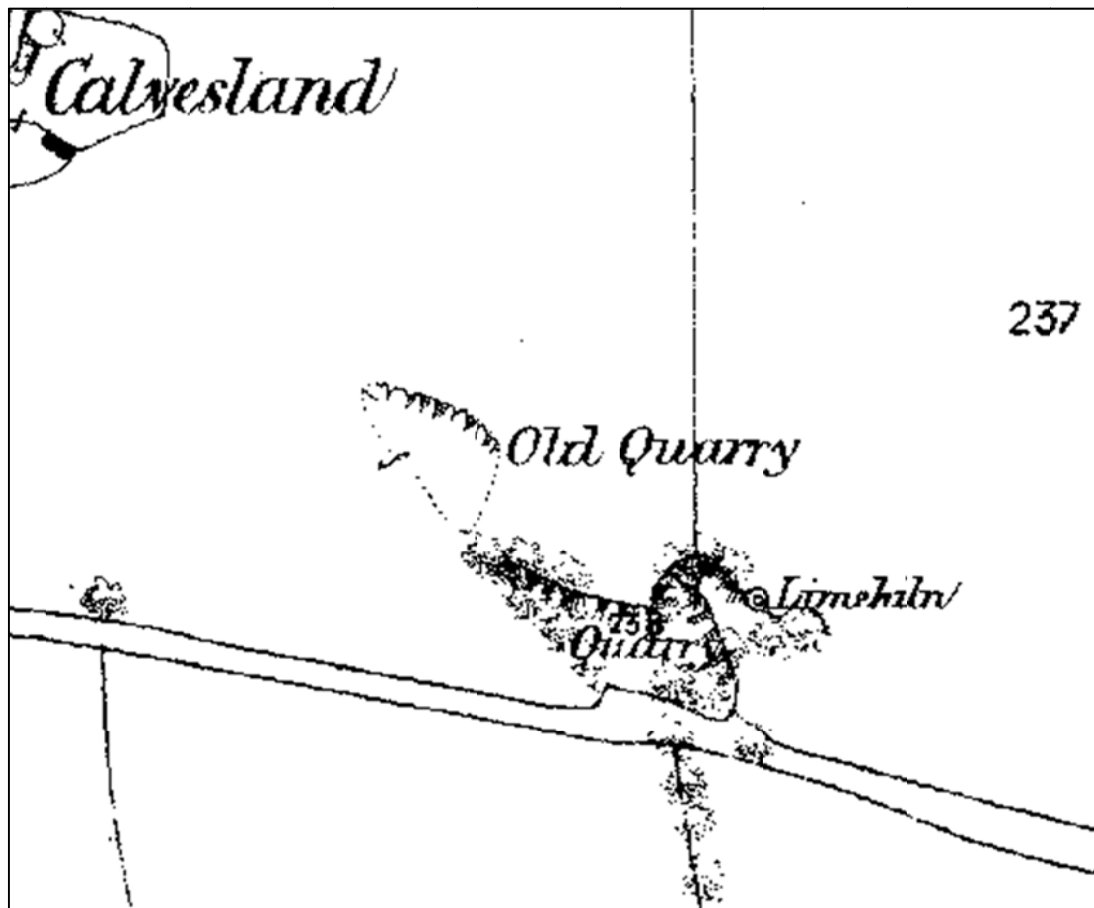


Historic Environment Feature Management Report:

Lime Kiln SE of Calvesland Farm

Customer Reference Number: A0028622

UID: 303,369



Detail from the Ordnance Survey 1st edition map (1889) © and database right Crown copyright and Landmark Information Group Ltd (All rights reserved 08/05/2012)

This management plan has been produced by Dyfed Archaeological Trust Heritage Management to inform the positive management of the identified Priority Historic Environment Feature. The identified management outcome will meet the objective for the Historic Environment Feature Targeted Layer as part of the Glastir Land Management Scheme.

PRN 15973 **Name** Calvesland Farm
Period Post-medieval **Site Type** Lime kiln
NGR SS0477198639

Site Description

A lime kiln shown on the 1st edition Ordnance Survey map (1889). By the 2nd edition it is described as Old Limekiln indicating abandonment. Its associated quarries are shown on the maps lying to the west. It is a three quarter circle draw kiln situated against a south-facing limestone outcrop. It is built of dressed limestone bonded with lime-based mortar. It is a good example of a small quarry based farm kiln which processed lime for use in the immediate area.

The kiln is still shown on the most recent Ordnance Survey mapping (Mastermap, 2011) as kiln (Disused). The most recent aerial photographs (Next Perspectives, 2009) show the area to be covered in woodland so its current condition is unclear.

Management Issues

The main management issue is the control of invasive vegetation which has the potential to damage built structural remains and below ground archaeological deposits by the intrusive action of roots and the prising apart of masonry bonds and also to protect the remains from wind throw and insensitive woodland management. Excessive vegetation cover can also obscure the remains from view.

Desired Management Outcome

The desired management outcome is to prevent degradation of the built structural remains and buried archaeological deposits of the kiln and to keep them in a stable and visible condition.

Management Actions

The following management actions are required in order to keep the structure in a stable and visible condition:

- Remove any young trees growing out of the top of the structure by cutting by hand.
- Do not pull-up by the roots as this is potentially destabilising to masonry bonds.
- Cut any scrub back by hand in order to retain the visibility of the structure.
- Spot treat to prevent regrowth.

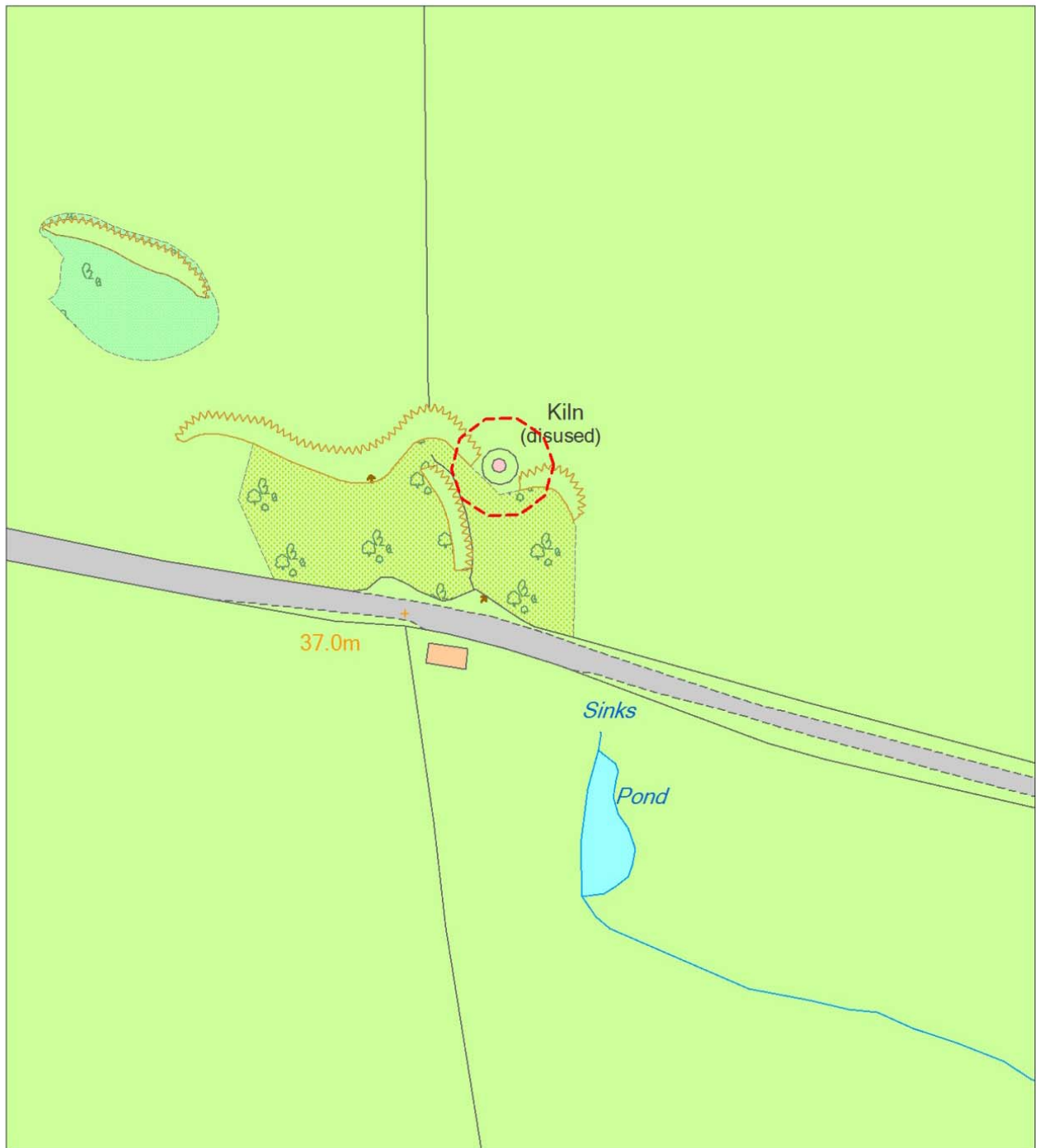
Glastir Whole Farm Code

Please also remember that, unless we have indicated otherwise, the Glastir Whole Farm Code should be observed for all historic features on your farm. The Whole Farm Code states that you must not damage any historic feature identified on your agreement map.

Definitions of damage to a historic feature include ANY of the following:

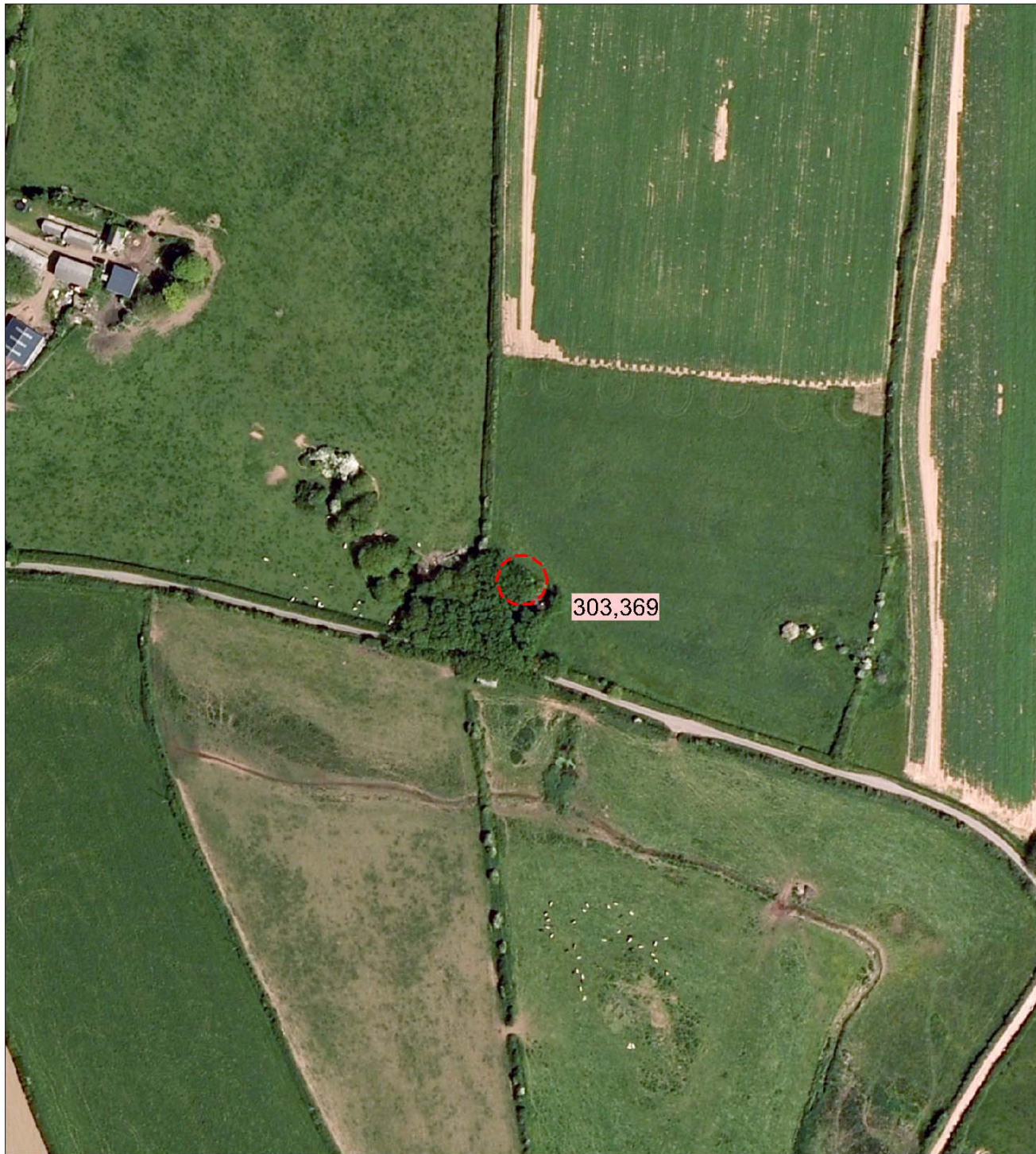
- Ground disturbance or excavation especially extending beneath topsoil.
 - Dumping or storage of material, including temporary storage.
 - Removal of any material, including stones, soil or subsoil.
 - Visible signs of active erosion (loss and disturbance of topsoil) caused by livestock and vehicles or other agricultural practice.
 - Planting trees.
 - Allowing scrub to develop.
 - Ploughing or reseeded.
 - Displacing individual stone features.
-

Location Map



Historic Environment Feature UID 303 369

Aerial Photograph

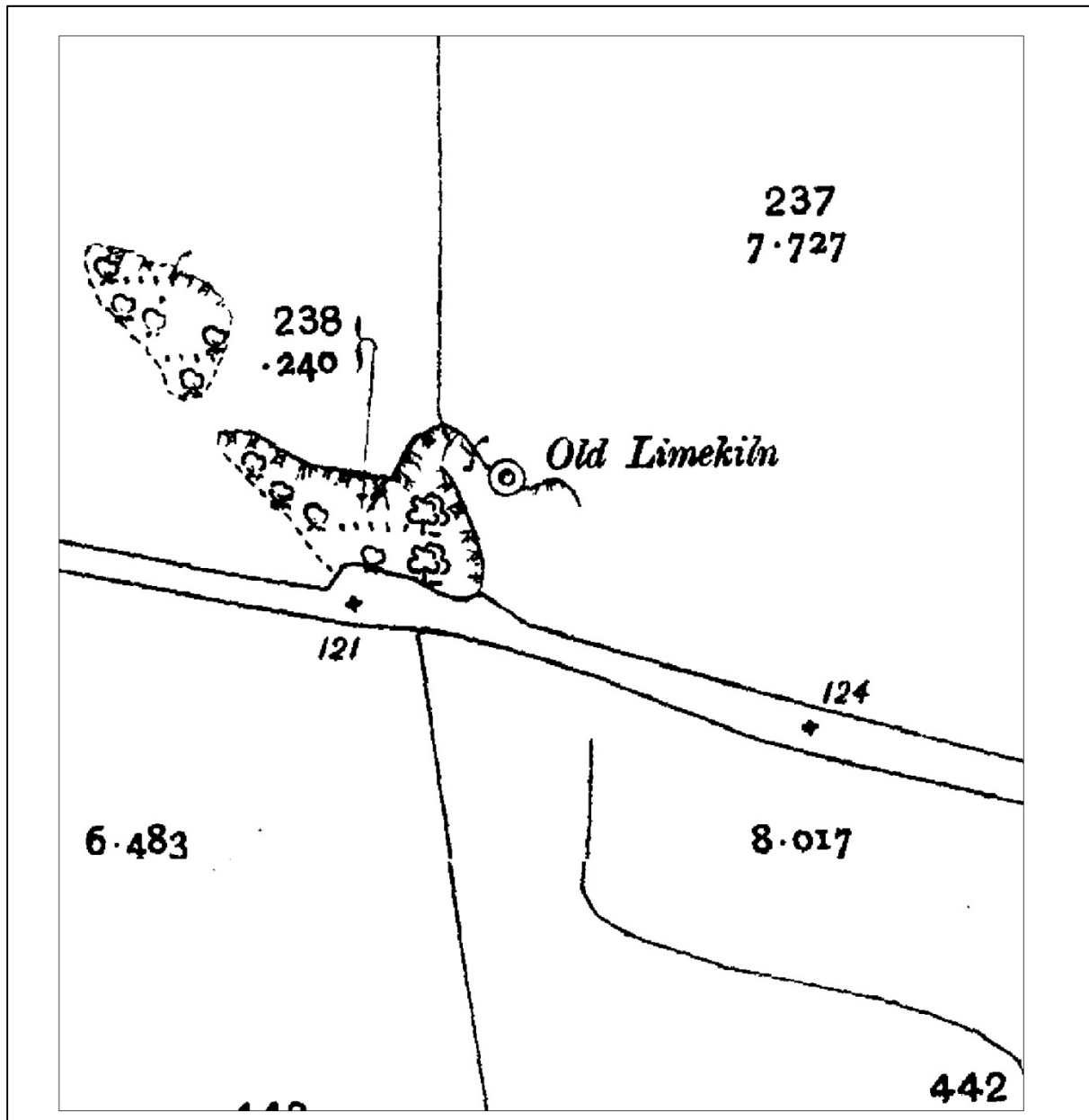


© Next Perspectives. Welsh Assembly Government 2009



Historic Environment Feature UID 303,369

1907 2nd edition Ordnance Survey Map



Maps based upon Ordnance Survey material with the permission of Ordnance Survey on behalf of the Controller of Her Majesty's Stationery Office Crown copyright. Unauthorised reproduction infringes Crown copyright and may lead to prosecution or civil proceedings'. Welsh Assembly Government 100017916.
[04.15.13](#)

Archaeological data, from the Regional Sites and Monuments Record, supplied by The Dyfed Archaeological Trust in partnership with Local Authorities, Cadw and the partners of ENDEX DAT, 2011 (and in part Crown, 2011).

[15.04.13](#) - HTML file produced for Glastir management report, DAT file number [407](#).
Dyfed Archaeological Trust, Heritage Management, The Shire Hall, 8 Carmarthen Street, Llandeilo,
Carmarthenshire SA19 6AF.
tel (01558) 823131 , fax (01558) 823133, email info@dyfedarchaeology.org.uk , website
www.dyfedarchaeology.org.uk

