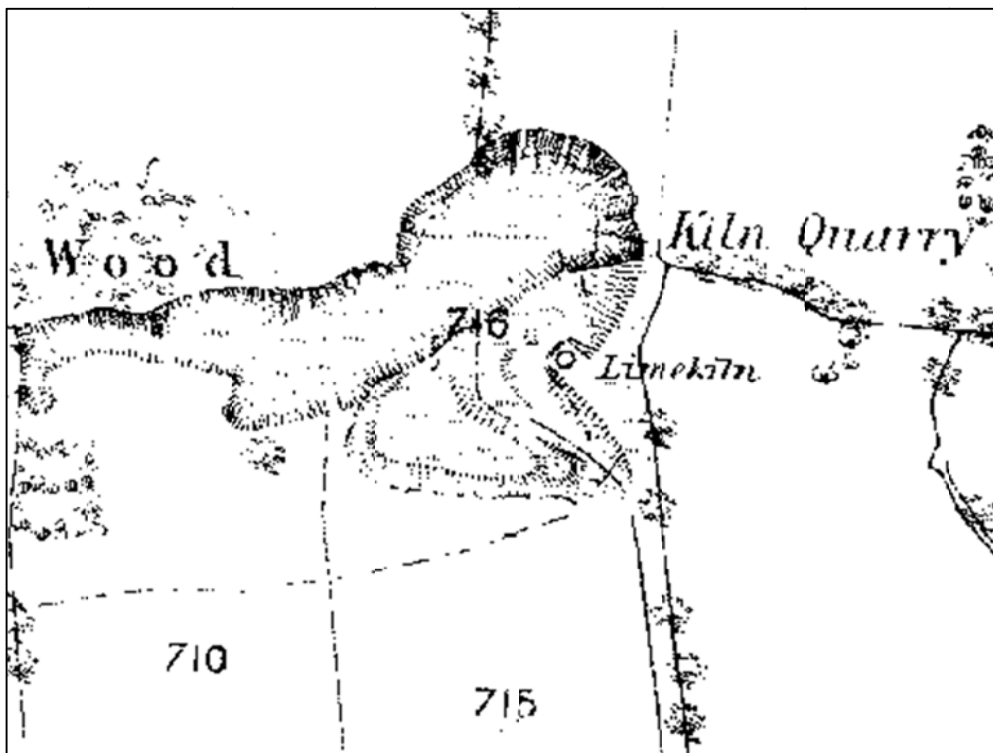


Historic Environment Feature Management Report:

Kiln Quarry and Lime Kiln

Customer Reference Number: A0028557

UID: 301,359



Detail from the Ordnance Survey 1st edition map (1889) © and database right Crown copyright and Landmark Information Group Ltd
(All rights reserved 08/05/2012)

This management plan has been produced by Dyfed Archaeological Trust Heritage Management to inform the positive management of the identified Priority Historic Environment Feature. The identified management outcome will meet the objective for the Historic Environment Feature Targeted Layer as part of the Glastir Land Management Scheme.

HEF Description

An irregular shaped quarry shown on the 1st edition Ordnance Survey map(1889) with a ruined lime kiln on the south eastern edge. By the 2nd edition map in 1907 the kiln is marked as disused showing abandonment by this date. The mapping also shows no change in the size and form of the quarry suggesting that the quarry and presumably kiln became redundant shortly after the 1st edition survey was undertaken. The name of the Kiln Quarry also suggests that the kiln and quarry always worked as a single entity.

The kiln is shown on the most recent Ordnance Survey mapping (Mastermap 2011). The most recent aerial photographs (Next Perspectives, 2009) show the area to be covered with thick woodland so its current condition is unclear

PRN 22867 Name KILN QUARRY

Period Post-medieval **Site Type** Lime kiln

NGR SN03930575

Description

The map evidence shows kiln to be square with a central circular pot. A field visit in 2001 suggested it might have a triangular drawing arch.

Management Issues

The main management issues for this site are focussed on the kiln where it is required to control invasive vegetation which has the potential to damage built structural remains and below ground archaeological deposits by the intrusive action of roots and the prising apart of masonry bonds and also to protect the remains from wind throw and insensitive woodland management. Excessive vegetation cover can also obscure the remains from view.

Desired Management Outcome

The desired management outcome is to prevent degradation of the built structural remains and buried archaeological deposits of the kiln and to keep them in a stable and visible condition. In addition it is desirable for woodland clearance and harvesting to be managed with care, particularly around the kiln.

Management Actions

The following management actions are required in order to keep the structure in a stable and visible condition:

- Remove mature trees which are at risk of wind throw and could threaten the structure through uprooting (root plate damage) or falling limbs.
- Remove any young trees growing out of the top of the structure by cutting by hand. Do not pull-up by the roots as this is potentially destabilising to masonry bonds.

- Cut any scrub back by hand in order to retain the visibility of the structure.
- Spot treat to prevent regrowth.
- Maintain a canopy of mature trees over the kilns. This will prevent light entering the ground, inhibiting scrubby vegetation growth.

PRN 16839 Name KILN QUARRY

Period Post-medieval **Site Type** Limestone quarry

NGR SN03920575

Description

The map shows a series of depressions, working faces and raised ground representing different phases of excavation and dumping of spoil within the quarry floor

Management Issues

Management Issues The main management issues is the potential damage from wind throw and insensitive woodland management. Excessive vegetation cover can also obscure the remains from view.

Desired Management Outcome

The desired management outcome is for woodland clearance and harvesting to be managed with care.

Management Actions

The following management actions are desirable in order to minimise damage to archaeological remains within the quarry

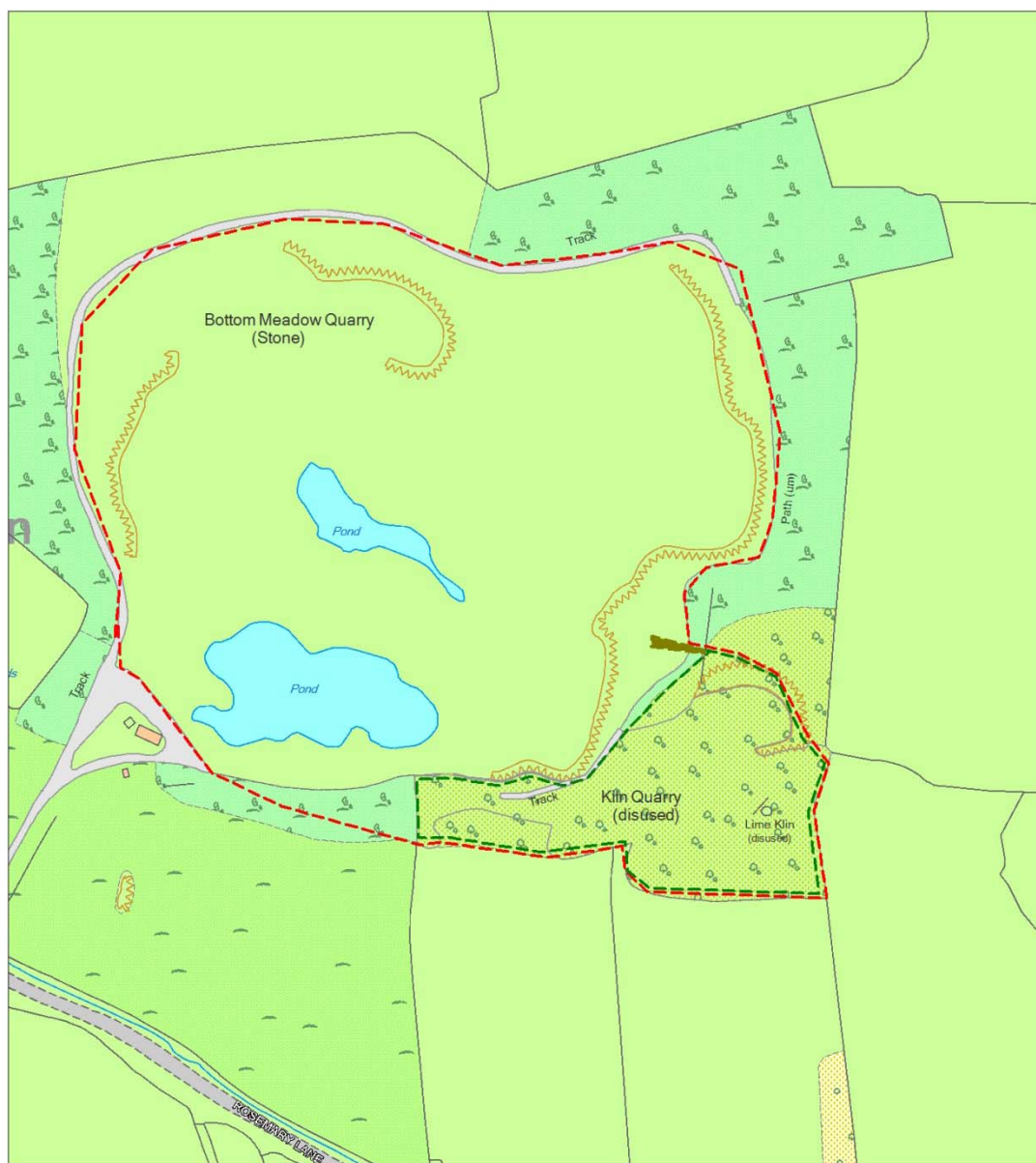
- Any harvesting or thinning of trees to avoid heavy and protracted extraction leading to ground disturbance
- Avoid leaving trees vulnerable to wind throw

Glastir Whole Farm Code

Please also remember that, unless we have indicated otherwise, the Glastir Whole Farm Code should be observed for all historic features on your farm. The Whole Farm Code states that you must not damage any historic feature identified on your agreement map. Definitions of damage to a historic feature include ANY of the following:

- Ground disturbance or excavation especially extending beneath topsoil.
- Dumping or storage of material, including temporary storage.
- Removal of any material, including stones, soil or subsoil.
- Visible signs of active erosion (loss and disturbance of topsoil) caused by livestock and vehicles or other agricultural practice.
- Planting trees.
- Allowing scrub to develop.
- Ploughing or reseedling.
- Displacing individual stone features.

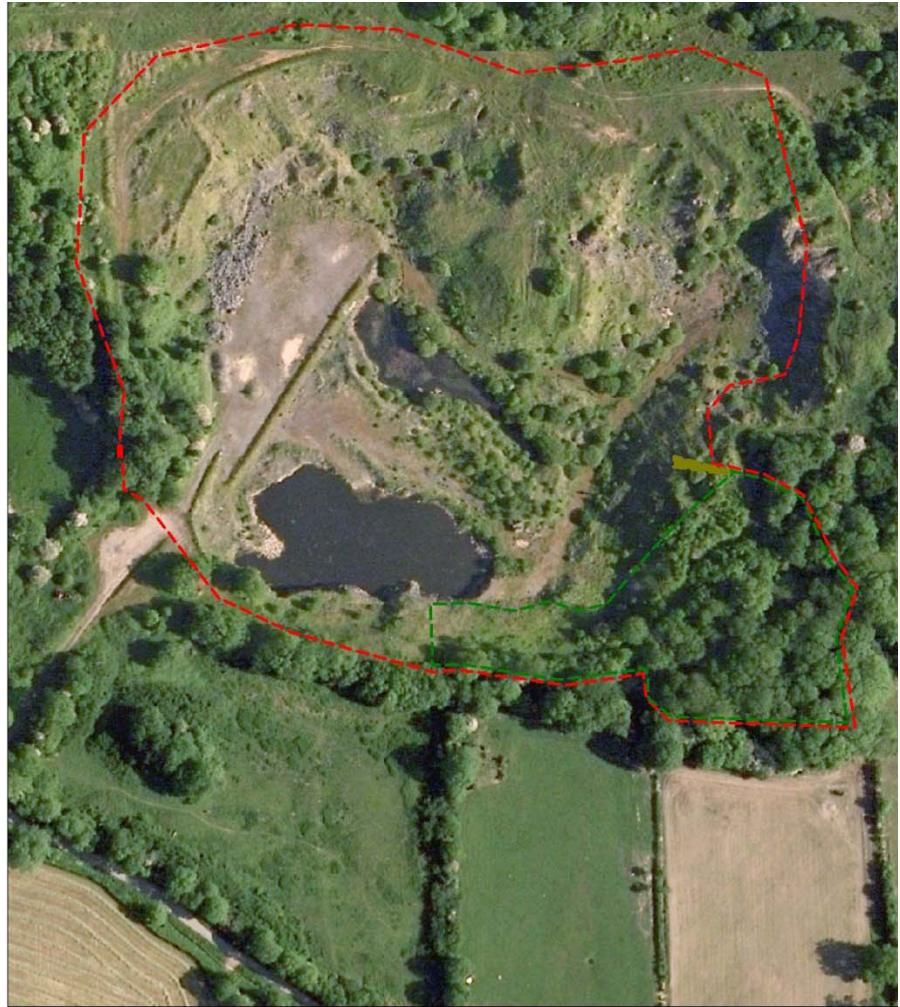
Location map



Historic Environment Feature UID 301 359



Zone of active management



© Next Perspectives. Welsh Assembly Government 2009

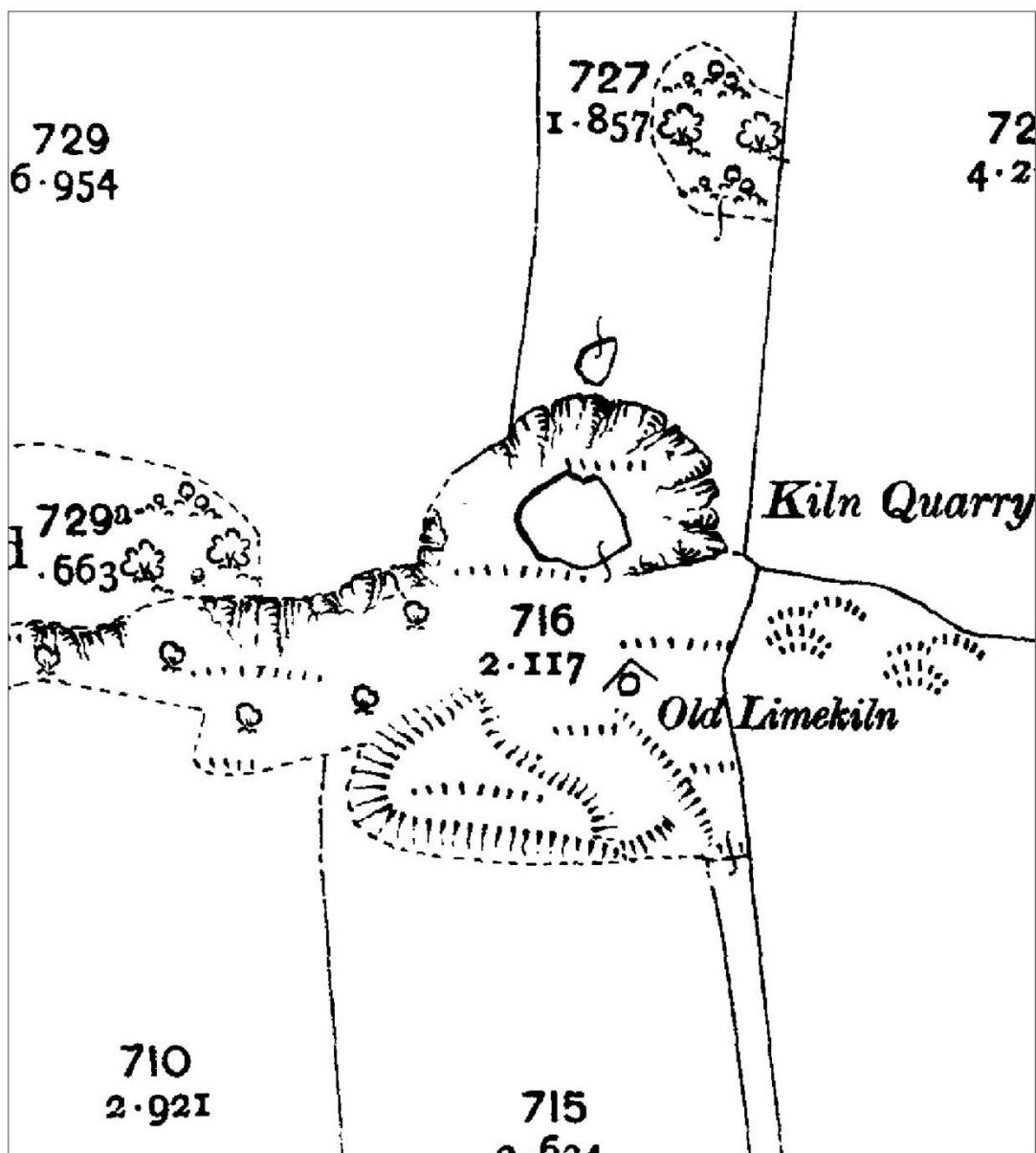


Historic Environment Feature UID 301 359



Zone of active management

Aerial Photograph



Detail from the Ordnance Survey 2nd edition map (1906)
 © and database right Crown copyright and Landmark Information Group Ltd (All rights reserved 08/05/2012)

Maps based upon Ordnance Survey material with the permission of Ordnance Survey on behalf of the Controller of Her Majesty's Stationery Office Crown copyright. Unauthorised reproduction infringes Crown copyright and may lead to prosecution or civil proceedings'. Welsh Assembly Government 100017916.
 04.12.13

Archaeological data, from the Regional Sites and Monuments Record, supplied by The Dyfed Archaeological Trust in partnership with Local Authorities, Cadw and the partners of ENDEX DAT, 2011 (and in part Crown, 2011).

12.04.13 - HTML file produced for Glastir management report, DAT file number 401.
 Dyfed Archaeological Trust, Heritage Management, The Shire Hall, 8 Carmarthen Street, Llandeilo,
 Carmarthenshire SA19 6AF.
 tel (01558) 823131 , fax (01558) 823133, email info@dyfedarchaeology.org.uk , website
www.dyfedarchaeology.org.uk