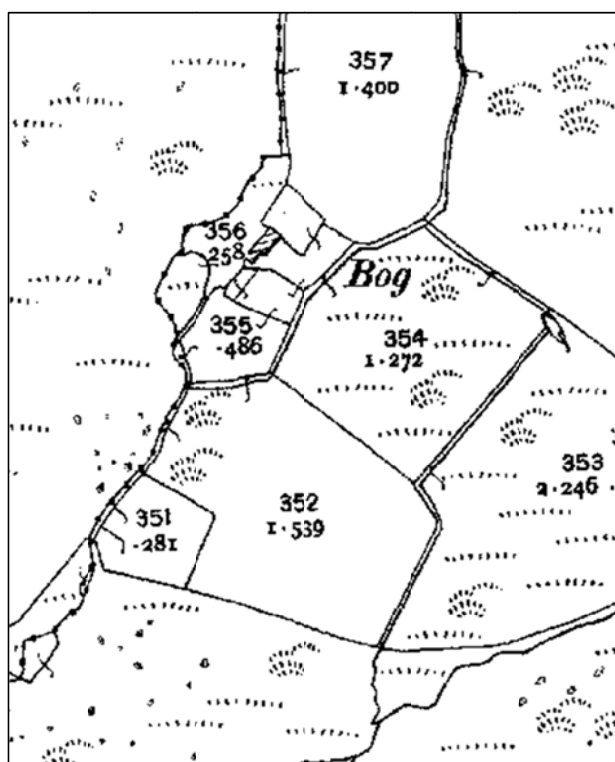


Historic Environment Feature Management Report:

Bog Cottage

Customer Reference Number: A0030255

UID: 304,102



Detail from the Ordnance Survey 1st edition map (1889) © and database right Crown copyright and Landmark Information Group Ltd (All rights reserved 08/05/2012)

ymddiriedolaeth archaeolegol
DYFED
archaeological trust



Llywodraeth Cymru
Welsh Government

This management plan has been produced by Dyfed Archaeological Trust Heritage Management to inform the positive management of the identified Priority Historic Environment Feature. The identified management outcome will meet the objective for the Historic Environment Feature Targeted Layer as part of the Glastir Land Management Scheme.

PRN 63382 **Name** BOG Cottage
Period Post-Medieval **Site Type** cottage
NGR SN00133051

Site Description

A minor farmstead named Bog on the Ordnance Survey 1st edition map (1889); the name and location suggesting a squatter dwelling on extremely marginal land. It is shown on the 1907 map indicating it was still occupied at that date. It is depicted on the most recent Ordnance Survey mapping (Mastermap 2011). Recent aerial photographs (Ordnance Survey Next Perspectives 2009) show the remains of walls still surviving although overgrown with vegetation. The area around the remains is rough grass.

Management Issues

The main management issue for this site is the control of vegetation which has the potential to damage both buried archaeological remains and the built structure.

Desired Management Outcome

The desired management outcome is to reduce further decay of the built structural remains and to keep them in a stable and visible condition.

Management Actions

The following management actions are required in order to keep the structure in a stable condition:

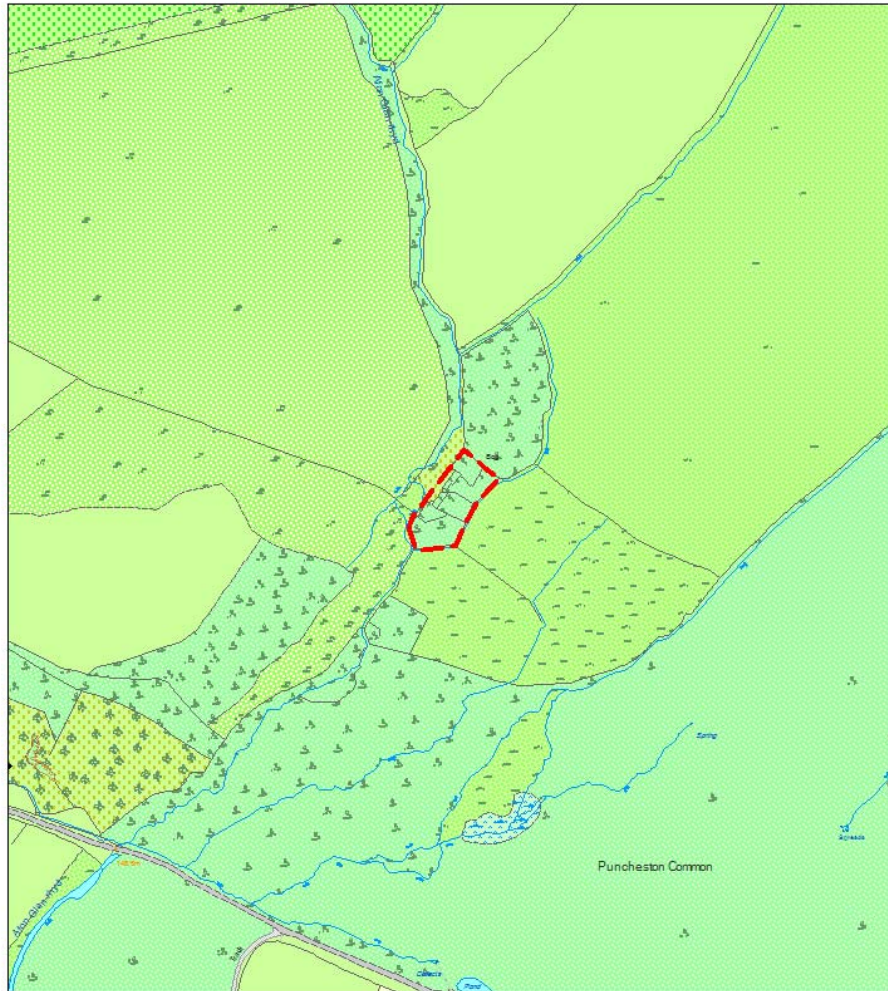
- Cut back vegetation by hand in order to prevent further damage and to enhance the visibility of the structure.
- Do not pull-up by the roots as this is potentially destabilising to masonry bonds.

Glastir Whole Farm Code

Please also remember that, unless we have indicated otherwise, the Glastir Whole Farm Code should be observed for all historic features on your farm. The Whole Farm Code states that you must not damage any historic feature identified on your agreement map. Definitions of damage to a historic feature include ANY of the following:

- Ground disturbance or excavation especially extending beneath topsoil.
- Dumping or storage of material, including temporary storage.
- Removal of any material, including stones, soil or subsoil.
- Visible signs of active erosion (loss and disturbance of topsoil) caused by livestock and vehicles or other agricultural practice.
- Planting trees.
- Allowing scrub to develop.
- Ploughing or reseeded.
- Displacing individual stone features.

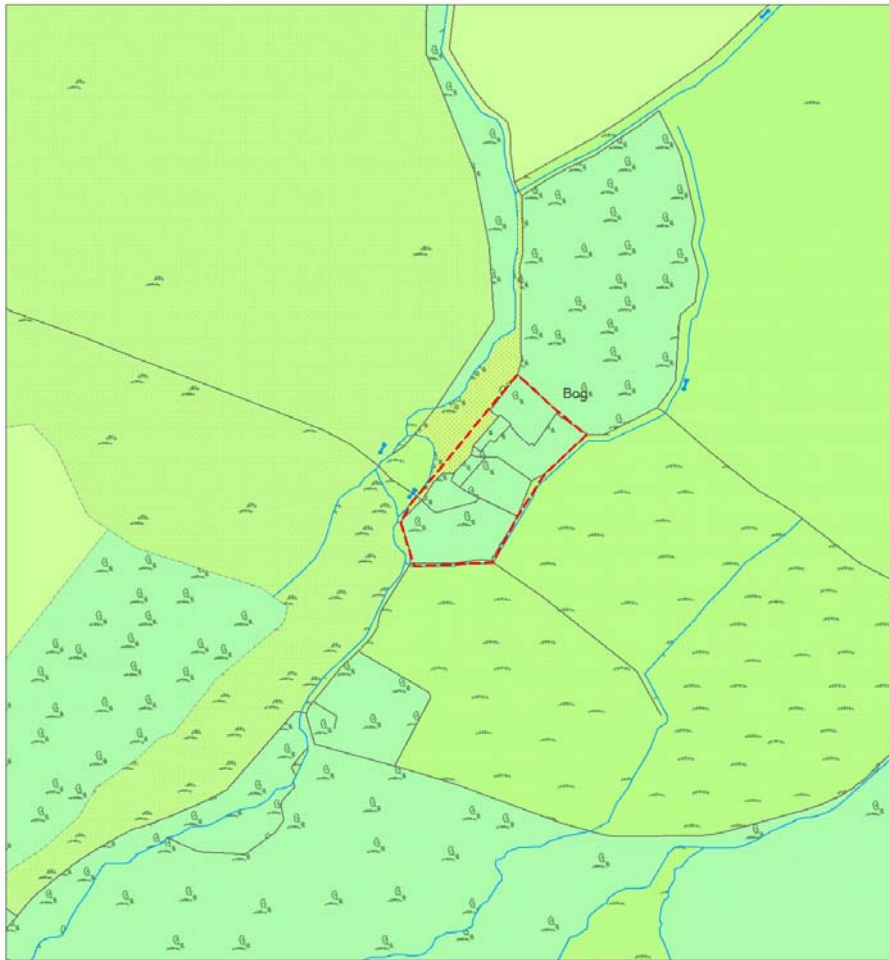
Location Map



Historic Environment Feature UID 304,12

Comment [LA1]: Incorrect UID

Formatted: Font: (Default) Verdana,
10 pt

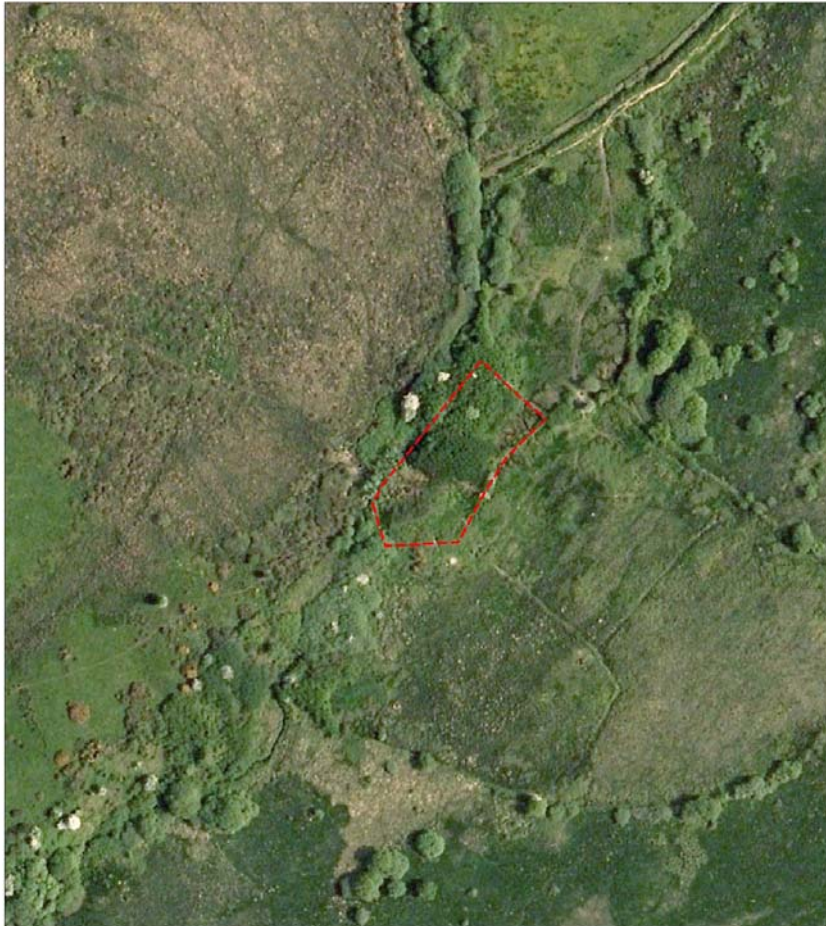


Historic Environment Feature UID 304,102

Formatted: Font: (Default) Verdana, 10 pt

Formatted: Space Before: Auto, After: Auto, Line spacing: single

Aerial Photograph

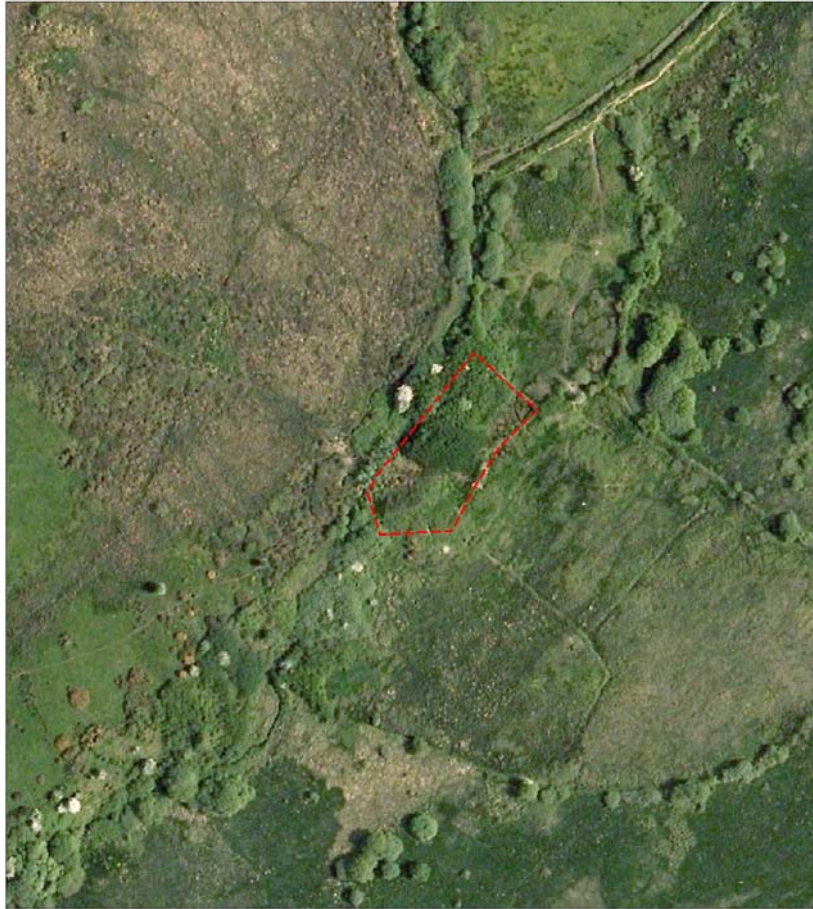


© Next Perspectives. Welsh Assembly Government 2009



Historic Environment Feature UID 304,102

Formatted: Font: (Default) Verdana, 10 pt



© Next Perspectives. Welsh Assembly Government 2009



Historic Environment Feature UID 304,12

Maps based upon Ordnance Survey material with the permission of Ordnance Survey on behalf of the Controller of Her Majesty's Stationery Office Crown copyright. Unauthorised reproduction infringes Crown copyright and may lead to prosecution or civil proceedings'. Welsh Assembly Government 100017916. 03.11.13

Archaeological data, from the Regional Sites and Monuments Record, supplied by The Dyfed Archaeological Trust in partnership with Local Authorities, Cadw and the partners of ENDEX DAT, 2011 (and in part Crown, 2011).

11.03.13 - HTML file produced for Glastir management report, DAT file number 383.
Dyfed Archaeological Trust, Heritage Management, The Shire Hall, 8 Carmarthen Street, Llandeilo,
Carmarthenshire SA19 6AF.
tel (01558) 823131 , fax (01558) 823133, email info@dyfedarchaeology.org.uk , website
www.dyfedarchaeology.org.uk

Comment [LA2]: Incorrect UID

Formatted: Font: (Default) Verdana, 10 pt

Formatted: Space After: 0 pt, Line spacing: single, Tab stops: 1.62 cm, Left + 3.23 cm, Left + 4.85 cm, Left + 6.46 cm, Left + 8.08 cm, Left + 9.69 cm, Left + 11.31 cm, Left + 12.92 cm, Left + 14.54 cm, Left + 16.16 cm, Left + 17.77 cm, Left + 19.39 cm, Left + 21 cm, Left + 22.62 cm, Left + 24.23 cm, Left + 25.85 cm, Left