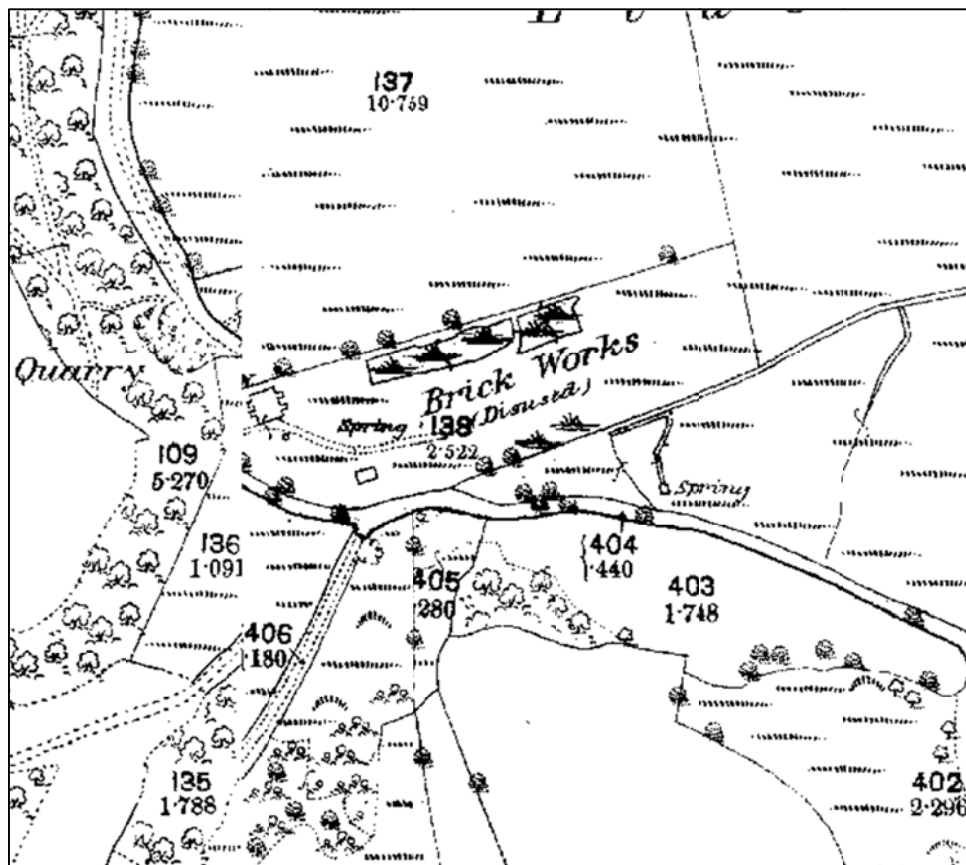


Historic Environment Feature Management Report: Trefloyne Brickworks

Customer Reference Number: A0028666

UID: 304, 640



Detail from the Ordnance Survey 1st edition map (1889) © and database right Crown copyright and
Landmark Information Group Ltd (All rights reserved 08/05/2012)

This management plan has been produced by Dyfed Archaeological Trust Heritage Management to inform the positive management of the identified Priority Historic Environment Feature. The identified management outcome will meet the objective for the Historic Environment Feature Targeted Layer as part of the Glastir Land Management Scheme.

PRN 63810 **Name** Trefloyne Brick works
Period Modern **Site Type** brickworks
NGR NGR SN11340018

Site Description

A brickworks marked on the 1st edition Ordnance Survey (1889) as disused. The map shows a large brick kiln, tracks and other associated structures. The outline of the brick kiln itself is shown on the most recent Ordnance Survey mapping (Mastermap 2011). Recent aerial photographs (Ordnance Survey Next Perspectives 2009) show the site is covered with trees with a thick canopy.

Management Issues

The main management issue for this site is the control of vegetation which has the potential to damage both buried archaeological remains and the built structure through the disruptive activity of root development. Trees can pose a threat through wind throw or falling limbs.

Desired Management Outcome

The management outcome is to maintain the built structural remains in a stable and visible condition.

Management Actions

Scrub growth is damaging to the long term survival of buried and structural remains through the disruptive activity of root development. Trees can pose a threat through wind throw or falling limbs.

- Remove mature trees which are at risk of wind throw and could threaten upstanding remains of the brickworks through uprooting (root plate damage) or falling limbs.
- Remove any young trees or vegetation growing out of the wall tops but cutting by hand. Do not pull-up by the roots as this is potentially destabilising to masonry bonds.
- Cut any scrub back by hand in order to retain the visibility of the building ruins.
- Maintain a canopy of mature trees over the site. This will prevent light entering the ground, inhibiting scrubby vegetation growth.

Management Opportunities

It may be desirable to carry out a programme of masonry consolidation and re-pointing in order to make the structure safe. Contact Dyfed Archaeological Trust for further advice.

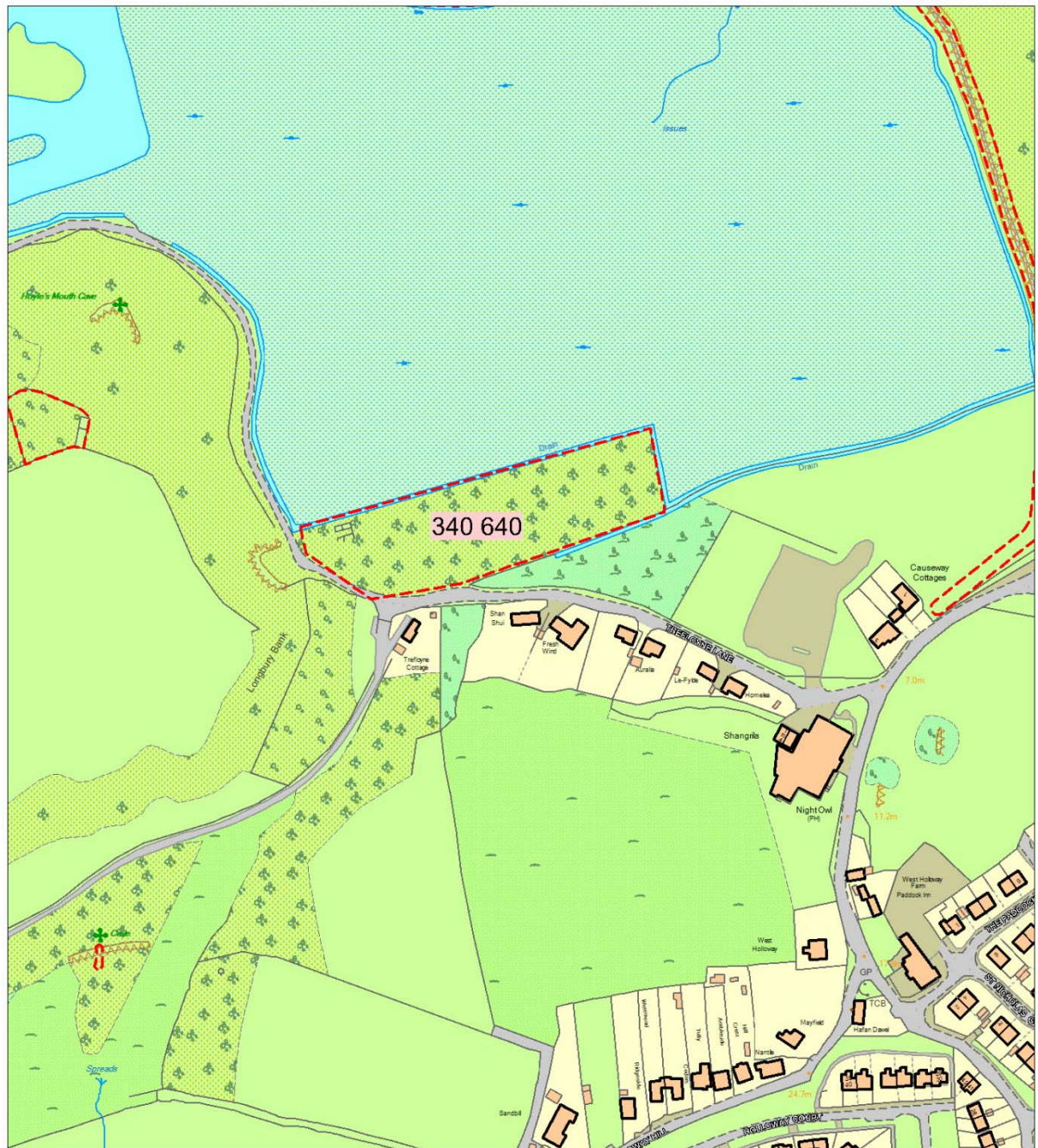
Glastir Whole Farm Code

Please also remember that, unless we have indicated otherwise, the Glastir Whole Farm Code should be observed for all historic features on your farm. The Whole Farm Code states that you must not damage any historic feature identified on your agreement map.

Definitions of damage to a historic feature include ANY of the following:

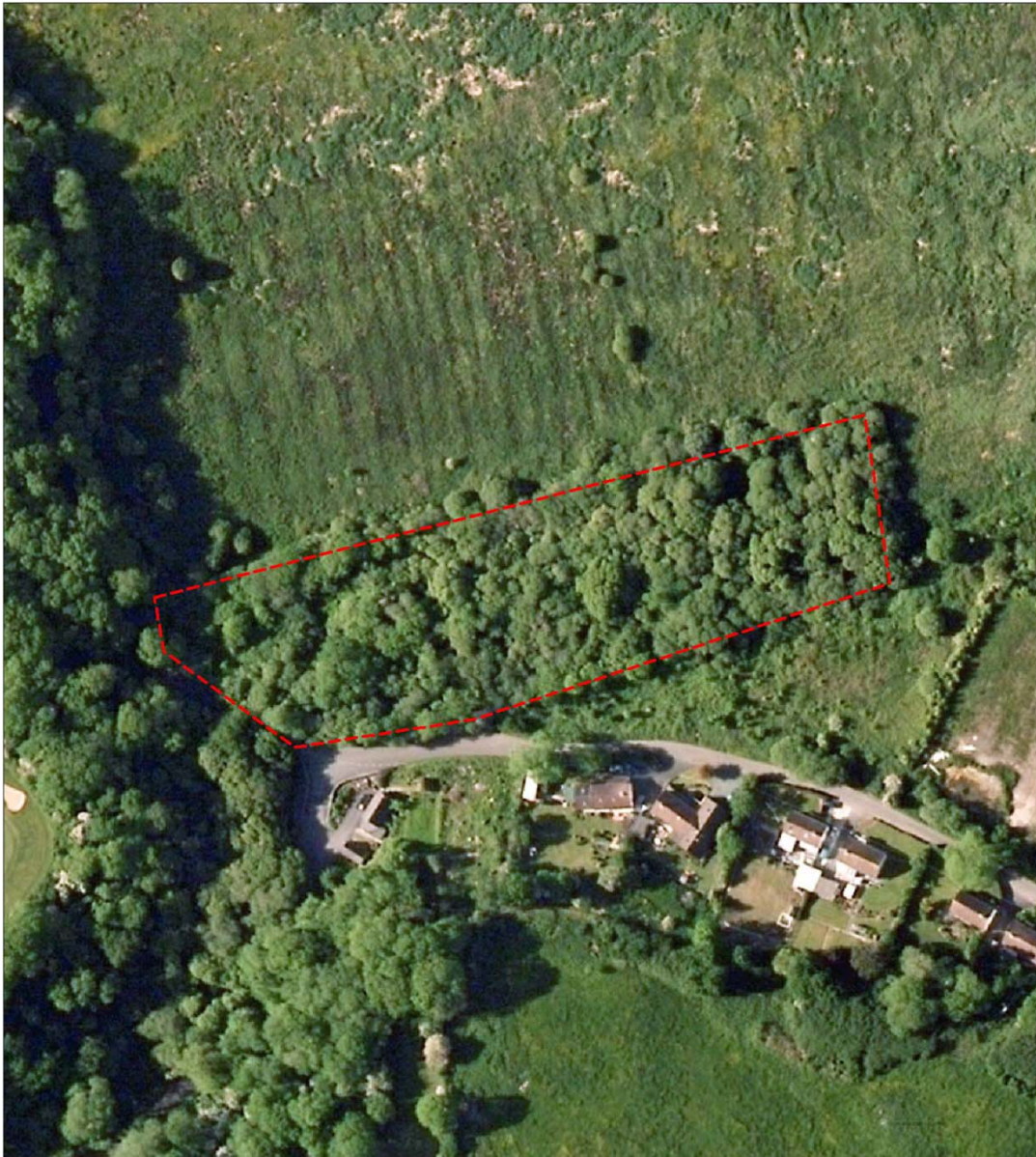
- Ground disturbance or excavation especially extending beneath topsoil.
 - Dumping or storage of material, including temporary storage.
 - Removal of any material, including stones, soil or subsoil.
 - Visible signs of active erosion (loss and disturbance of topsoil) caused by livestock and vehicles or other agricultural practice.
 - Planting trees.
 - Allowing scrub to develop.
 - Ploughing or reseeded.
 - Displacing individual stone features.
-

Location Map



Historic Environment Feature UID 340 640

Aerial Photograph

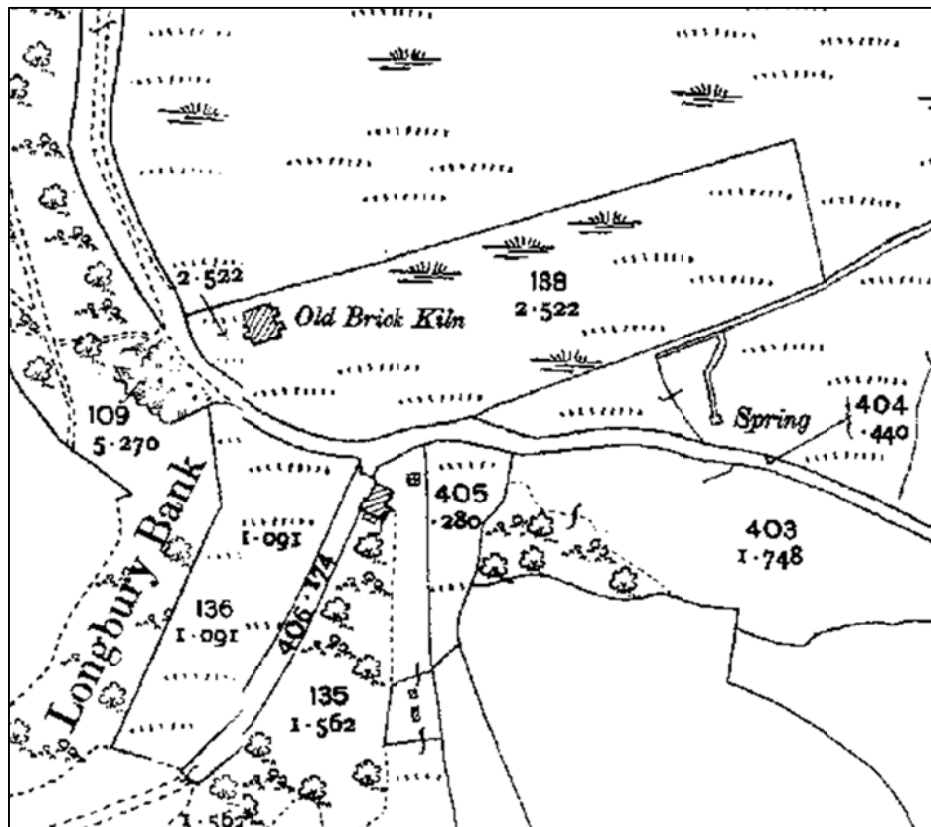


© Next Perspectives. Welsh Assembly Government 2009



Historic Environment Feature UID 340 640

Detail from the Ordnance Survey 1st edition map (1907)



© and database right Crown copyright and Landmark Information Group Ltd (All rights reserved 08/05/2012)

Maps based upon Ordnance Survey material with the permission of Ordnance Survey on behalf of the Controller of Her Majesty's Stationery Office Crown copyright. Unauthorised reproduction infringes Crown copyright and may lead to prosecution or civil proceedings'. Welsh Assembly Government 100017916.
[03.11.13](#)

Archaeological data, from the Regional Sites and Monuments Record, supplied by The Dyfed Archaeological Trust in partnership with Local Authorities, Cadw and the partners of ENDEX DAT, 2011 (and in part Crown, 2011).

[11.03.13](#) - HTML file produced for Glastir management report, DAT file number [380](#).

Dyfed Archaeological Trust, Heritage Management, The Shire Hall, 8 Carmarthen Street, Llandeilo, Carmarthenshire SA19 6AF.

tel (01558) 823131 , fax (01558) 823133, email info@dyfedarchaeology.org.uk , website www.dyfedarchaeology.org.uk