

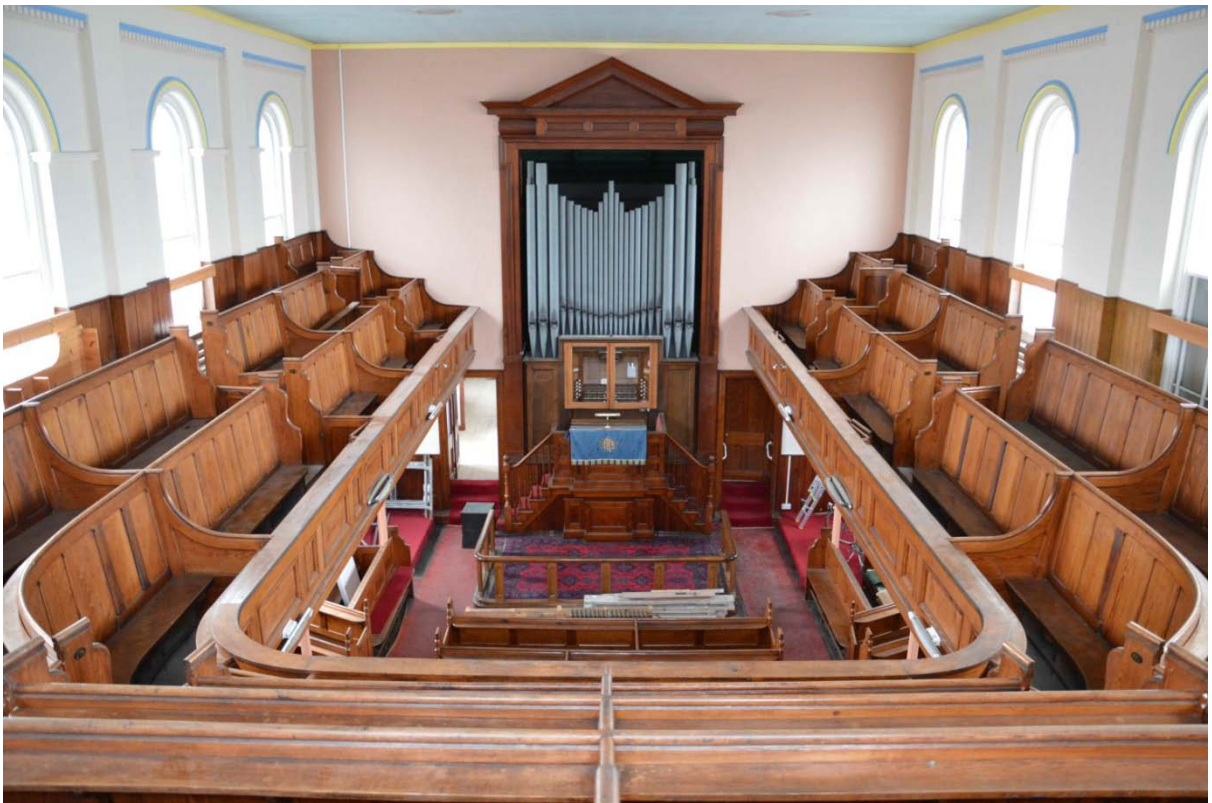
**WESLEYAN CHAPEL  
LONGBRIDGE STREET  
LLANIDLOES**

**Level 2 Building Record**

Planning ref: 23/1741/FUL

Dr Kevin Blockley  
Cambrian Archaeological Projects Ltd

Prepared for:  
Darren Bender



October 2024 (Issue 2)

CAP REPORT 737

## CONTENTS

1	Introduction .....	4
1.1	Location and scope of work .....	4
1.2	Archaeological and historical background .....	5
2	Aims and Objectives.....	5
3	Methodology.....	5
4	Results of the work.....	6
4.1	Phasing.....	6
4.2	Descriptions.....	6
4.3	Archive .....	9
4.4	Desk-based assessment .....	9
5	Conclusions .....	9
6	Acknowledgements .....	10

Appendix I: List of photographs

Appendix II: Archive cover sheet

## List of Figures

Figure 1	Location plan (National Library of Wales)
Figure 2	Plans (National Library of Scotland)
Figure 3	Elevations (National Library of Scotland)
Figure 4	Sections
Figure 5	1995 drawing of expanded toilet facilities
Figure 6	Phase plan
Figure 7	Location of photographs
Figure 8	1886-87 1 <sup>st</sup> edition OS map
Figure 9	1903 2 <sup>nd</sup> edition OS map

## List of Plates

Plate 1	Door to pantry
Plate 2	Windows in east wall of kitchen
Plate 3	West wall of kitchen and doorway to school room
Plate 4	Door between kitchen and school room
Plate 5	Windows in north wall of school room
Plate 6	West wall of school room
Plate 7	South wall of school room with doorway to toilet block
Plate 8	East wall of school room and doorway to kitchen
Plate 9	Oculus window high up in east wall of school room
Plate 10	Ceiling and two plaster roses in school room
Plate 11	Eastern plaster rose in school room
Plate 12	Western plaster rose in school room
Plate 13	Sample of wooden paneling on south wall of school room
Plate 14	Brass door handle on door between school room and lobby
Plate 15	External door to lobby (left) and door to cupboard (right)
Plate 16	External door in hall (left) and door to chapel (right)
Plate 17	Wooden paneling on north side of hall (screening organ works)
Plate 18	Screen between meeting room and school room
Plate 19	Wooden paneling on south side of store room (screening organ works)
Plate 20	Pulpit and railed area
Plate 21-22	Main body of chapel from pulpit
Plate 23	Detail of organ keyboard
Plate 24	Commemorative plaque to keyboard
Plate 25	Main body of chapel and balcony
Plate 26	Decorative bracket supporting balcony
Plate 27	Side pews at east end
Plate 28	Main body of chapel at ground level
Plate 29	Decorative window in vestibule
Plate 30	Stairs to 1 <sup>st</sup> floor and balcony
Plate 31	Main doors into chapel
Plate 32-33	Main body of chapel from 1 <sup>st</sup> floor
Plate 34	Central area of ground floor pews looking from balcony
Plate 35	Pews on ground floor north side from balcony
Plate 36	1 <sup>st</sup> floor pews on south side
Plate 37	1 <sup>st</sup> floor pews at west end
Plate 38	1 <sup>st</sup> floor pews on south side
Plate 39	1 <sup>st</sup> floor pews general view
Plate 40	Ground floor pews, north side, from 1 <sup>st</sup> floor
Plate 41	1 <sup>st</sup> floor pews on north side from 1 <sup>st</sup> floor
Plate 42	Pulpit

Plate 43	North aisle and north pews from low down
Plate 44	North steps to pulpit
Plate 45	Organ works (east end)
Plate 46	Organ works (west side)
Plate 47	Commemorative stone laid by Mrs S Meddins, Nov 1900
Plate 48	Commemorative stone laid by Mr E Hamer, Nov 1900
Plate 49	Commemorative stone laid by the Teachers
Plate 50	Commemorative stone laid by Rev A C Pearce, Nov 1900
Plate 51	Extension added in 1900 and location of commemorative stones
Plate 52	Stone commemorating The Wesleyan Chapel erected 1802, enlarged 1822. Outside west elevation
Plate 53	Foundation stone to current chapel Laid April 3, 1874 (on west elevation)
Plate 54	West front entrance and location of commemorative stones
Plate 55	West elevation of chapel
Plate 56	South side of extensions
Plate 57	South side of extensions
Plate 58	South elevation of chapel and extensions
Plate 59	South elevation of chapel
Plate 60	Stone high up on west elevation. Wesleyan Methodist Chapel
Plate 61	North-west corner of chapel
Plate 62	North and east elevations of Chapel and extensions
Plate 63	North and west elevations of chapel and part of 1900 extension
Plate 64	Kitchen of 1900 extension
Plate 65	Timber roof trusses above main body of chapel

*Copyright Notice:*

Cambrian Archaeological Projects Ltd. retain copyright of this report under the Copyright, Designs and Patents Act, 1988, and have granted a licence to Darren Bender to use and reproduce the material contained within.

The Ordnance Survey has granted Cambrian Archaeological Projects Ltd a Copyright Licence (No. AL 52163A0001) to reproduce map information; Copyright remains otherwise with the Ordnance Survey.



## Non Technical Summary

*Mae'r adroddiad hwn yn deillio o waith a wnaed gan Cambrian Archaeological Projects Ltd (CAP) i baratoi Cofnod Adeiladu Lefel 2 o'r Capel Wesleyaidd, Stryd Longbridge, Llanidloes cyn ei drawsnewid yn annedd. Nid yw'r capel gwreiddiol ar y safle (a adeiladwyd yn 1802 a'i ehangu yn 1822) wedi gadael unrhyw olion. Mae'r capel presennol yn dyddio i 1874 gydag estyniad yn dyddio i 1900 yn y cefn ac ychwanegwyd cyfleusterau toiledau newydd ym 1995. Darperir cofnod ffotograffig, disgrifiadau a chynllun gwedd yn yr adroddiad hwn.*

*This report results from work undertaken by Cambrian Archaeological Projects Ltd (CAP) to prepare a Level 2 Building Record of the Wesleyan Chapel, Longbridge Street, Llanidloes in advance of conversion to a dwelling. The original chapel on the site (built in 1802 and enlarged in 1822) has left no trace. The existing chapel dates to 1874 with an extension dating to 1900 to the rear and new toilet facilities added in 1995. A photographic record, descriptions and phase plan are provided in this report.*

## 1 Introduction

### 1.1 Location and scope of work

- 1.1.1 The Wesleyan Methodist Chapel site on the east side of Longbridge Street, Llanidloes within the medieval core of the town (FIG 1).
- 1.1.2 The chapel is situated at National Grid Ref: SN9549284661 (FIG 1). Planning ref: 23/1741/FUL.
- 1.1.3 A Heritage Impact Assessment was prepared in September 2020 to assess the proposal being put forward as part of a planning application for conversion of the chapel to a dwelling (Blockley, K, *Wesleyan Chapel, Longbridge Street, Llanidloes: Heritage Impact Assessment*, Cambrian Archaeological Projects Report, September 2020). This identified the external impact was minimal, but that the removal of pews was a significant impact, hence the need for a Level 2 Building Record to be undertaken prior to the start of development in 2020 and revised in 2024 to ensure the report meets revised reporting guidelines.
- 1.1.4 The building is Listed NPRN 11403 with the following description by the RCAHMMW (November 2010):

*The first church on the site of the current Long Bridge Methodist Church was built in 1802, but was subsequently destroyed and replaced with the building now extant. A sandstone tablet from the earlier building has been reset into the new church, and is inscribed 'The / Wesleyan / Chapel / Erected 1802 / Enlarged 1822 / God is Love'. There is also a foundation stone inscribed with the date of reconstruction in 1874. The present chapel, dated 1874, is built in the Italianate Gothic style, with snecked rubble walls and ashlar dressings. The entrance is in an advanced central section, with a large semi-circular topped doorway with*

*moulded arch and projecting keystone. Above this is a triplet of tall semi-circular headed lancets with pierced circles above the mainlight and under the moulded head. This central projection has a low-pitch gable between square pilasters with tall pyramidal finials and is flanked by side bays with two-light rectangular windows of a complementary style. The side elevations have rectangular windows below and semi-circular headed windows above. The chapel has flanking turrets.*

#### 1.1.5 Planning Condition 8 comprises:

*No development shall take place until a programme of building recording and analysis, equivalent to an Historic England Level 2 building survey, has been secured and implemented, in accordance with a brief issued by the local planning authority and a written scheme of investigation which has been submitted and approved in writing by the local planning authority. The survey will be completed by a professional archaeological contractor.*

*The programme of building analysis and recording must meet the standards laid down by the Chartered Institute for Archaeologists in their Standard and Guidance for the archaeological investigation and recording of standing buildings or structures.*

*On approval by the Local Planning Authority, project data must be submitted and approved for inclusion in the Clwyd-Powys Archaeological Trust's Historic Environment Record [CPAT HER]. For any questions regarding this submission process, please contact the HER Team at [her@cpat.org.uk](mailto:her@cpat.org.uk). The full digital archive must also be submitted and approved for inclusion within the National Monuments Record, RCAHMW or the Archaeology Data Service, ADS.*

### 1.2 Geology and natural soils

- 1.2.1 The underlying geology of the site comprises Llandovery sedimentary formation of the Silurian Era (*British Geological Survey*, 2001).
- 1.2.2 The chapel lies over the meeting point of three natural soil types. These are Teme, Manod and Brickfield 3, a mixture of riverine alluvium, slatey stone and clay deposits (*Soil Survey of England and Wales*, 1983).

### 1.3 Archaeological and historical background

- 1.3.1 The chapel lies within the medieval core of Llanidloes (Soulsby I, *Towns of Medieval Wales*, 1983).
- 1.3.2 The current Longbridge Wesleyan Methodist Chapel was built on the site of an earlier chapel and a commemorative stone outside the west end is inscribed '*The Wesleyan Chapel Erected 1802 Enlarged 1822 God is Love*' (PLATE 52). There is also a foundation stone inscribed with the date of the current chapel built in 1874 (PLATE 53). The rear, brick section, was added in 1900 and various commemorative stones are set into the south wall of the extension (PLATES 47-50). The toilet extension on the south side of the 1900 build was added in 1995 (plan accompanying owner's deeds, FIG 5).

## 2 Aims and Objectives

- 2.1 To record and analyse the fabric of the building to Historic England's Level 2 specification (Historic England, *Understanding Historic Buildings: A Guide to Good Practice*, 2016) and prepare a report on the results.
- 2.2 To establish the dates of the various phases of the fabric and identify the subsequent repairs and modifications.

## 3 Methodology

- 3.1 All works were undertaken in accordance with both the IFA's Standards and Guidance and current Health and Safety legislation.
- 3.2 The client provided a set of plans for each floor level, as well as elevations and cross-sections. These drawings have been used as a base onto which the fabric recording was undertaken.
- 3.3 An archive list of photographs is provided in Appendix I with reference to the plate numbers in this report.

## 4 Results of the work

### 4.1 Phasing

- 4.1.1 The work was undertaken inside in good conditions with adequate lighting, although strong external lighting did affect some of the internal views of windows. External work was undertaken in good weather.
- 4.1.3 The phasing identified in the chapel is as indicated on the inscribed stones, as follows (FIG 6):

*PHASE I: Rebuilt Wesleyan Methodist Chapel built in 1874 (western end of complex)*

*PHASE II: Eastward extension comprising meeting room, school room and kitchen built in 1900 with organ added in 1925 (eastern end of complex)*

*PHASE III: Expansion of toilet facilities in 1995 and insertion of a cupboard in the lobby (on south side)*

### 4.2 Descriptions

*PHASE I: CHAPEL OF 1874 (FIGS 2-7)*

- 4.2.1 External elevations. The chapel measures 10.23 x 16.7m. The front elevation is in Italianate Gothic Style, with snecked rubble walls and ashlar dressings. The entrance is an advanced central section, with a large semi-circular topped doorway with moulded arch and projecting keystone. Above this is a triplet of semi-circular headed lancets with pierced circles above the mainlight and under a

moulded head. This central projection has a low-pitched gable between square pilasters and tall pyramidal finials and is flanked by side bays with two-light rectangular windows below and semi-circular headed windows above. The chapel is flanked by turrets (PLATES 54-55). The side elevations have two rows of windows: the lower are square headed, the upper with rounded heads. The south elevation is rendered and painted white, the north elevation of exposed yellow brick.

- 4.2.2 Ground floor. The ground floor plan of the chapel measures 9.19m x 15.62m. The floor is of timber planks. At the east end of the chapel is a pulpit accessed by steps from the north and south (PLATE 42) and with a railed area to the west (PLATES 20 and 44). There are three rows of pews, with aisle between (PLATE 21, 34-35). At the east end of the pews in the north and south aisles are three rows of pews facing into the chapel (PLATE 27 and 40) the remainder face east with a slight cant towards the pulpit (PLATES 28 and 40). All of the pews are of the box type in Pitch Pine, with doors (PLATE 43). At the west end is an entrance vestibule with tiled floor. Double doors give access to the vestibule from outside (PLATE 31) and there are two door giving access to the chapel (PLATE 30) with a decorative window between (PLATE 29). To the north and south are stairs to the first floor (PLATE 30). The first floor is supported by cast iron columns with foliate capitals and decorated brackets (PLATE 26).
- 4.2.3 First floor. On the first floor of the chapel is a balcony housing three banks of pews along the north and south sides, facing into the chapel (PLATES 32, 36, 38 and 41). At the west end the pews are arranged in 5 tiers (PLATES 37 and 39). Around the 1<sup>st</sup> floor is a decorated balcony (PLATES 28 and 41).
- 4.2.4 Roof. The timber frame in the roof contains the original, 1874 King Post trusses (PLATE 65).

*PHASE II: EXTENSION ADDED IN 1900 AND ORGAN INSERTED IN 1925 (FIGS 2-7)*

- 4.2.5 External elevations. The extension is built of red brick with bands of yellow brick (PLATES 51, 62-63). On the south wall are two doorways, one to the lobby and the other to the hall. There is a single sash window lighting the hall and a pair of windows lighting the lobby. This wall houses a number of commemorative stones (PLATES 47-50) all dated 1900. The north elevation is similar to the south but has no doors, and four paired sets of windows (PLATE 62). The east wall holds an oculus window at height (PLATES 62) with coloured glass (PLATE 9). Attached to the east side of the extension (offset to the south) and of the same build as the remainder of the extension, is a kitchen lit by three tall windows and with a small pantry off the north side (PLATE 64). The toilet block on the south

side of the 1900 extension is partly original, but extended in 1995. The original toilet was accessed from the kitchen (FIG 5).

4.2.6 Basement. The basement was not investigated.

4.2.7 Ground floor. The ground floor of the extension comprises a number of rooms all with planked floors: A hall and lobby on the south side, store room and meeting room on the north side, with room housing the organ workings between, to the east of the organ. The lobby and meeting room lead onto the school room which runs the full width of the extension. Off the east side of the school room is a kitchen with pantry to the north and toilet to the south-west. FIG 5 shows the original arrangement of the toilet off the kitchen. PLATE 1 records the doorway between the kitchen and pantry; FIG 2, the windows in the east wall of the kitchen and PLATES 3 and 4 show the south wall of the kitchen and doorway into the school room. The screen between the school room and the meeting room and lobby is panelled and has glass at ground floor level (PLATE 6). The school room is panelled below window level (PLATES 5, 7, 8 and detail 13). In the ceiling are two ornate plaster roses (PLATES 10-12). Doors have inset brass handles (PLATE 14). The lobby has had a cupboard inserted as this is not an original part of the 1900 layout (PLATE 15). The lobby continues the theme of panelling (PLATE 16) and with a floor-to-ceiling panelled wall with doors providing access to the organ workings (PLATE 17). The floor-to-ceiling panelling with doors is matched in the meeting room to provide further access to the organ workings (PLATE 19).

4.2.8 Organ. At the east end of the Phase I chapel is an organ (PLATES 23, 28 and 33) with nearby commemorative brass plaque inscribed *"TO THE GLORY OF GOD. THIS ORGAN WAS PRESENTED TO LLANIDLOES WESLEYAN CHURCH, 1925. BY ARTHUR E. WHITBY. STOKE BISHOP, BRISTOL. IN LOVING MEMORY OF HIS WIFE, PEGGY"* (PLATE 24).

#### *PHASE III: ENLARGED TOILET FACILITIES ADDED IN 1995 (FIG 5)*

4.2.9 In this phase the toilet facilities that were originally accessed from the kitchen were enlarged and a new doorway inserted into the south wall of the school room, where a window had originally been sited. The earlier doorway to the kitchen was blocked. Also included in this phase is the cupboard inserted into the lobby at some stage in the 20<sup>th</sup> century (PLATE 15).

#### *WOOD TYPES*

4.2.9 The pulpit and balcony are made from Pitch pine. The pews are Pitch pine with Chestnut seats. The glass frame around the 1925 organ keyboard is in oak.

### 4.3 Archive

- 4.3.1 The digital site archive will be dealt with in accordance with CAPs Digital Data Management Plan and Archiving Policy Selection and Retention Guidelines.
- 4.3.2 Data Final Selection Strategy. All of the site data was selected for inclusion in the final archive, comprising the following items:
- List of Photographs (pdf)
  - Architects plans, elevations and sections at 1:200 (pdf). Total of three files
  - Site photographs (total 65). Both low resolution and high resolution sets are in the archive (pdf)
  - Digital copy of Report 737 (pdf)
- 4.3.3 Data Management Plan. The site archive will be copied to CD and deposited with the RCAHMW. A copy of the full archive will be held by CAPLtd
- 4.3.4 The final archive. *On approval by the Local Planning Authority, project data will be submitted and approved for inclusion in the Clwyd-Powys Archaeological Trust's Historic Environment Record [CPAT HER]. The full digital archive will also be submitted and approved for inclusion within the National Monuments Record, RCAHMW or the Archaeology Data Service, ADS.*

### 4.4 Desk-based assessment

- 4.4.1 The desk based assessment comprised a search for readily available plans and mapping. Located was a 1995 plan of the toilet facilities (included in the descriptions above – FIG 5) and two OS maps: a 1<sup>st</sup> edition map of 1886-87 and a 2<sup>nd</sup> edition map of 1903, both to a scale of 6" to the mile. No plans or maps are available which show the earlier, demolished, chapel).
- 4.4.2 The 1886-87 1<sup>st</sup> edition OS map shows the chapel as built in 1874 (Phase 1 in this report). (FIG 8).
- 4.4.3 The 1903 2<sup>nd</sup> edition OS map shows the chapel and its recent (1900) extension to the east (FIG 9).

## 5 Conclusions

- 5.1.1 The study undertaken as part of this report has identified two main phases of the building complex (1874 and 1900) with an organ being added in 1925. All are firmly attested by various plaques around the building.
- 5.1.2 The only new data recovered was the 1995 plan of the Phase III toilet block.

## **6 Acknowledgements**

- 5.1 My thanks go to Barnaby Tuke and Charmain Ponnuthurai (the owners of the former chapel in 2020) for their help with providing plans and details of the 1995 toilet extension). Darren Bender (the current owner – 2024) has also been very helpful.

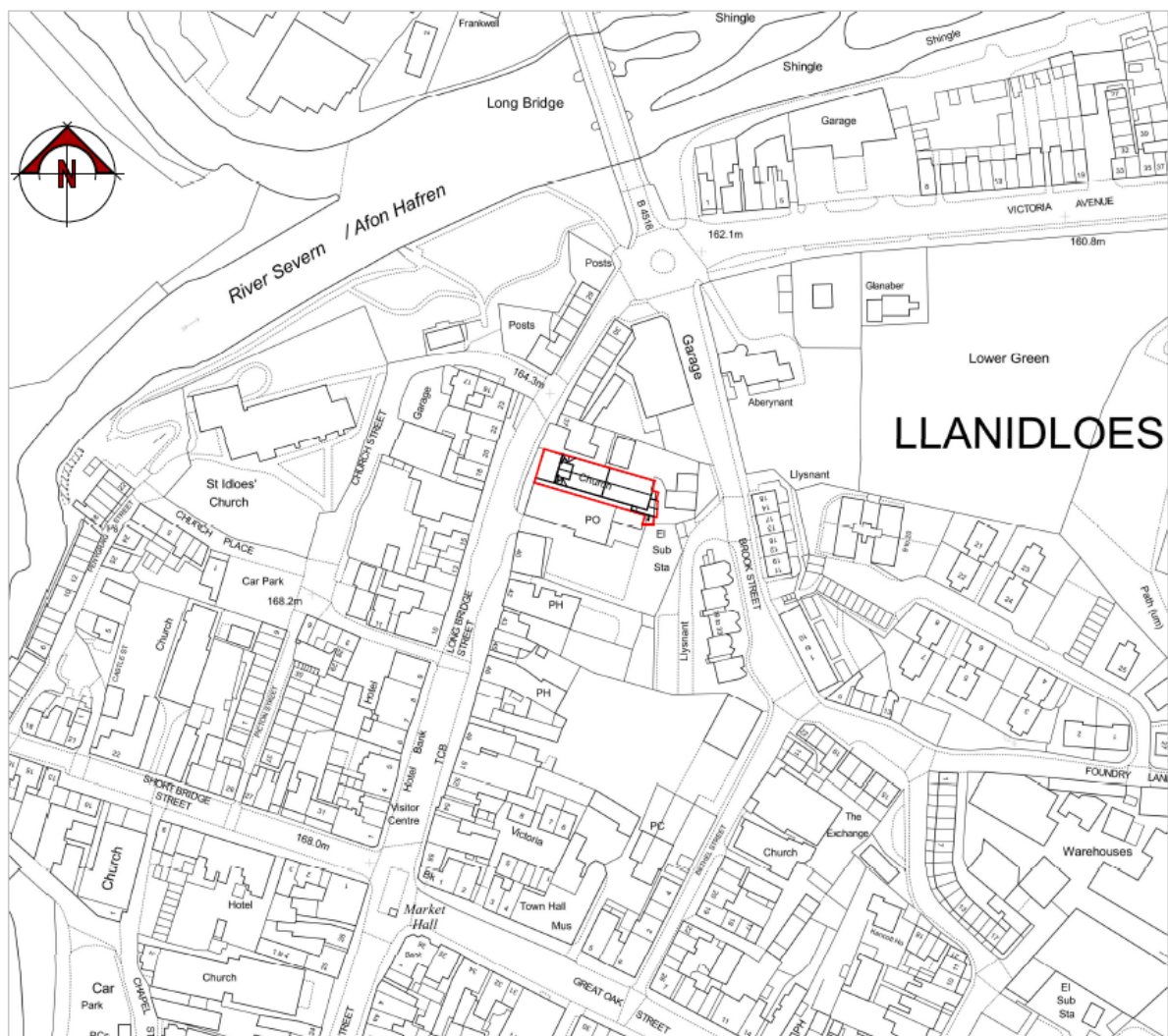
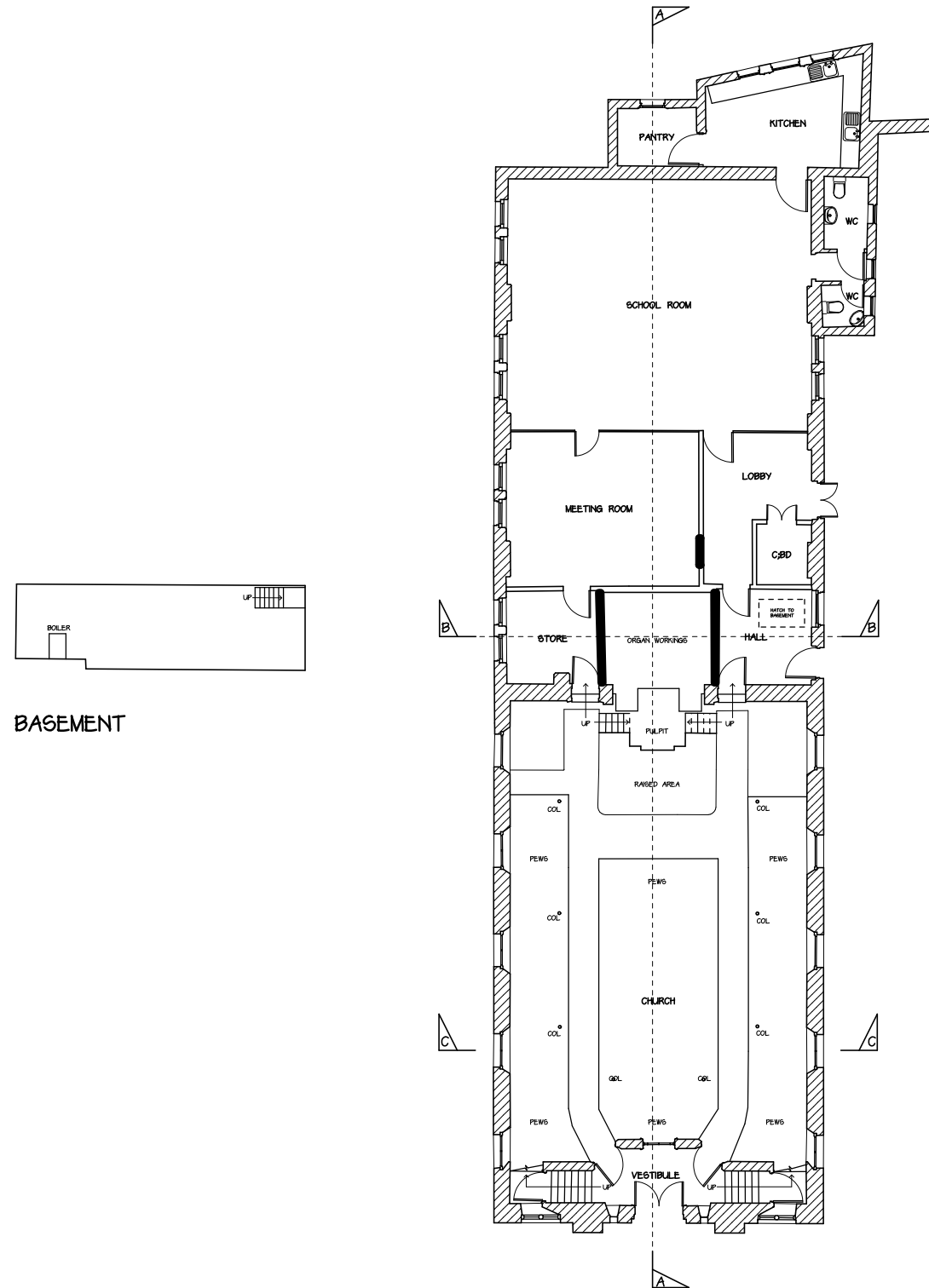


FIG 1: Location of Longbridge Chapel in Llanidloes. Scale 1:2500  
(National Library of Wales)



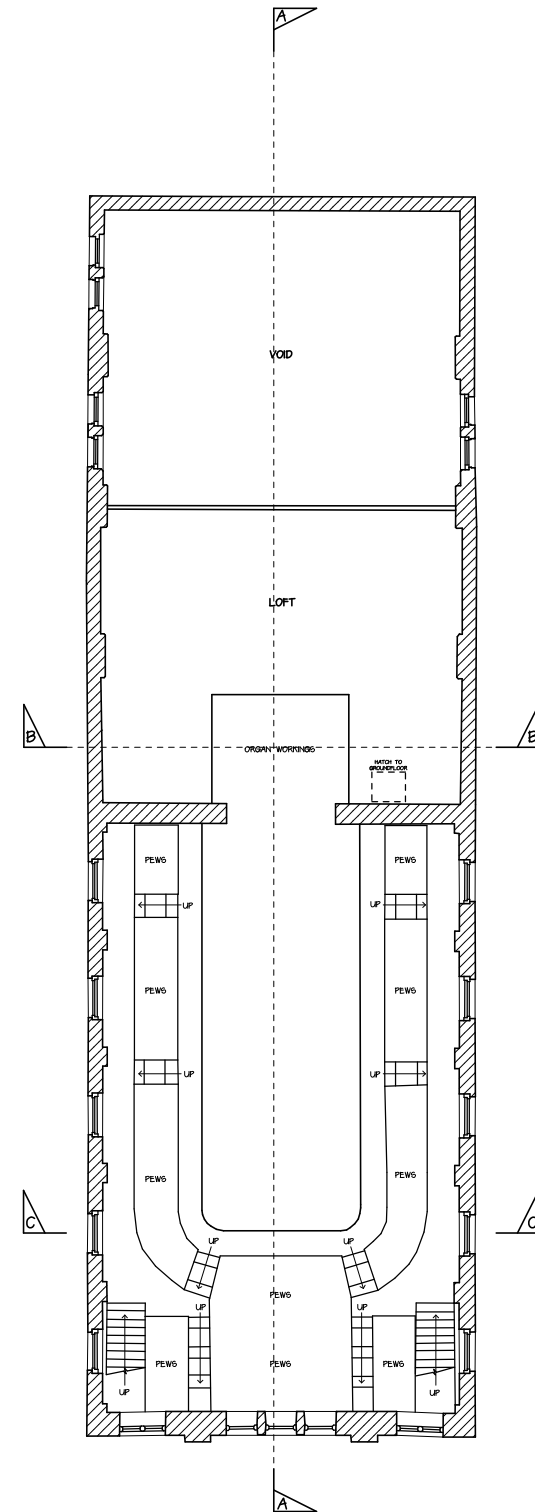


BASEMENT

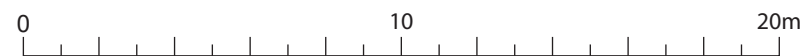


GROUND FLOOR  
EXISTING LAYOUTS

BUILDING SURVEY UNDERTAKEN AND PREPARED BY LIME GREEN ASSOCIATES



FIRST FLOOR



Job Title: Longbridge Chapel  
Llanidloes

Drawing Title: Plans

Date: October 2020

Drawn By: Dr Kevin Blockley

Scale: 1:200 at A3

Figure 2: PLANS



# EXISTING ELEVATIONS

BUILDING SURVEY UNDERTAKEN AND PREPARED BY LIME GREEN ASSOCIATES



FRONT (NORTH WEST)



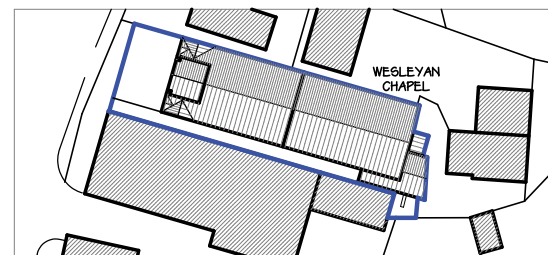
SIDE (SOUTH WEST)



REAR (SOUTH EAST)

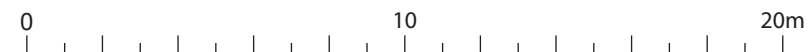


END (NORTH EAST)



BLOCK PLAN

1 / 500



Job Title: Longbridge Chapel  
Llanidloes

Drawing Title: Elevations

Date: October 2020

Drawn By: Dr Kevin Blockley

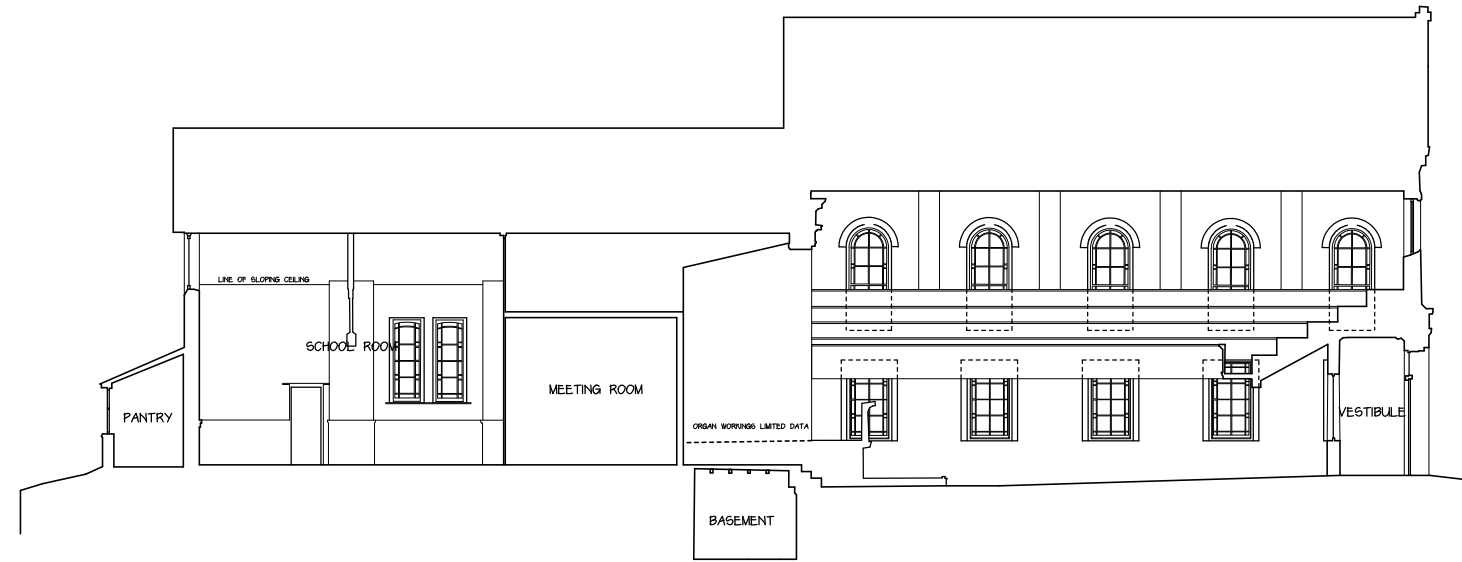
Scale: 1:200 at A3

**Figure 3: ELEVATIONS**

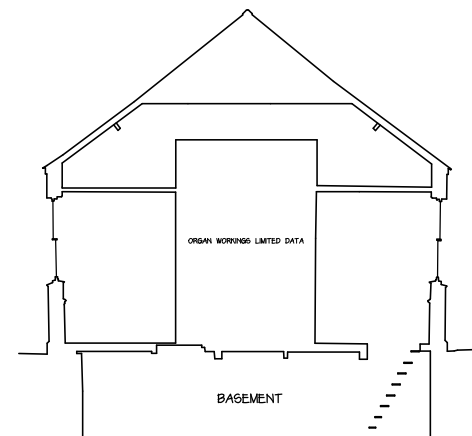


# SECTIONS

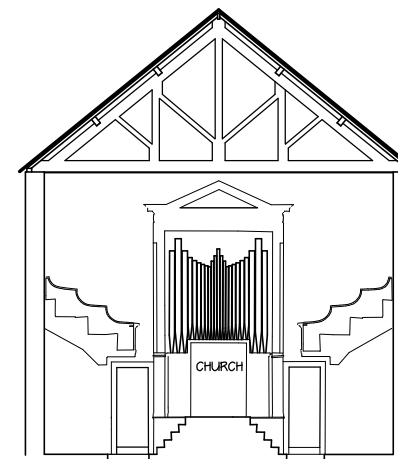
BUILDING SURVEY UNDERTAKEN AND PREPARED BY LIME GREEN ASSOCIATES



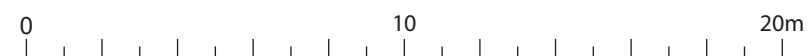
SECTION A - A




SECTION B - B

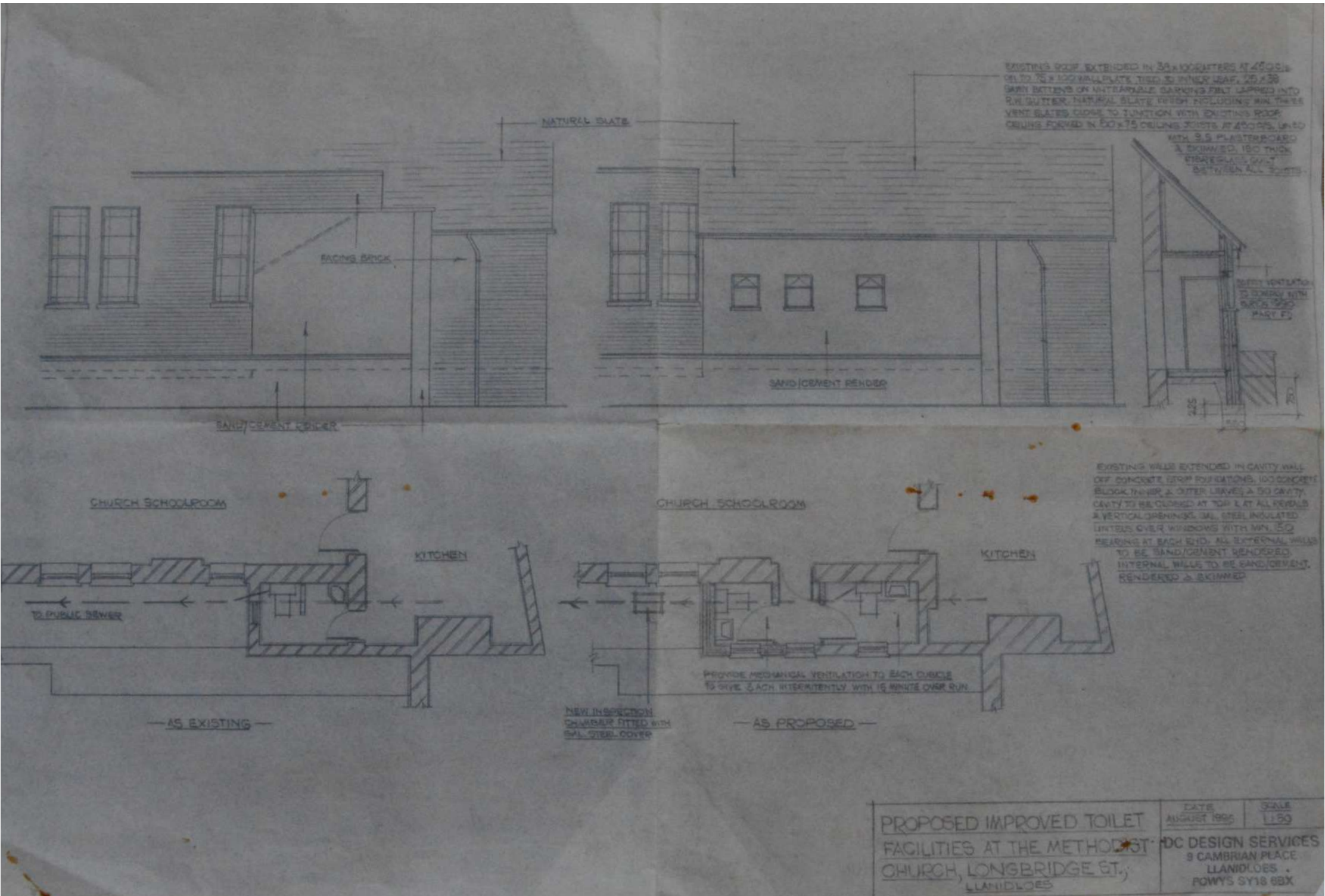


SECTION C - C



<b>Job Title:</b> Longbridge Chapel Llanidloes
<b>Drawing Title:</b> Sections
<b>Date:</b> October 2020
<b>Drawn By:</b> Dr Kevin Blockley
<b>Scale:</b> 1:200 at A3
<b>Figure 4: SECTIONS</b>
 <b>CAMBRIAN ARCHAEOLOGICAL PROJECTS</b>





Job Title: Longbridge Chapel  
Llanidloes

Drawing Title: Toilet block 1995

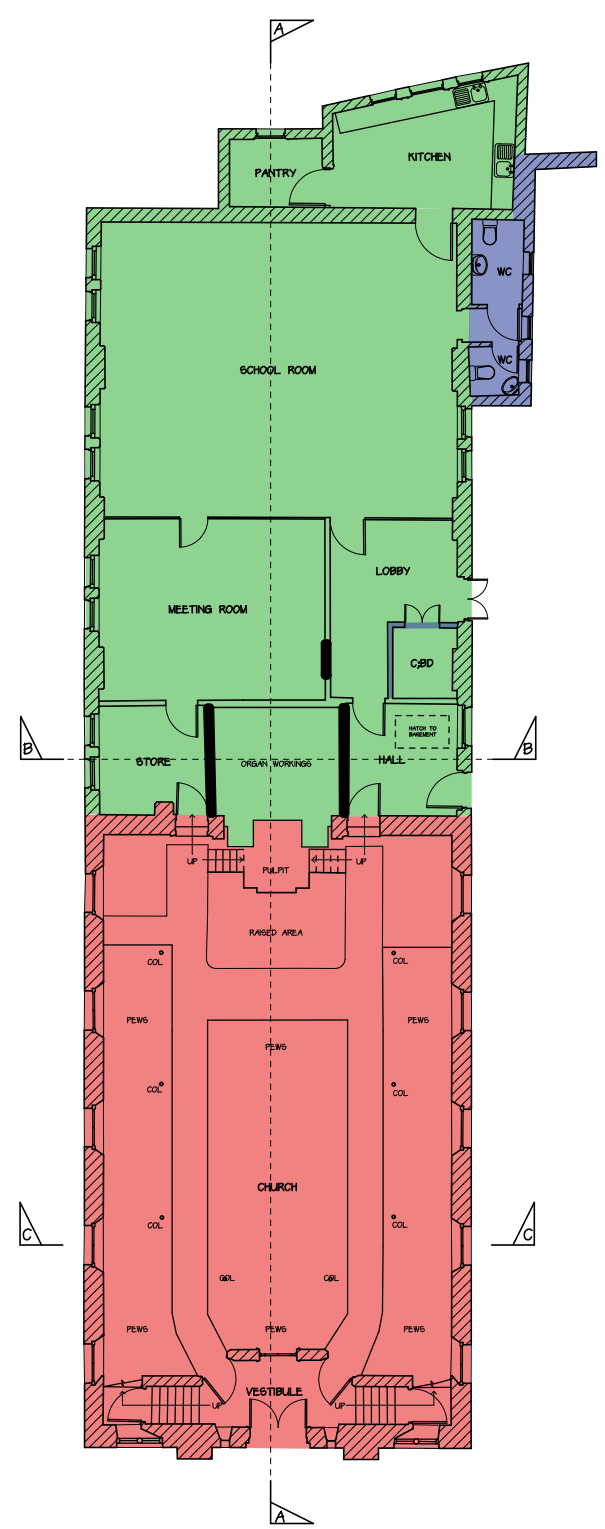
Date: October 2020

Drawn By: Dr Kevin Blockley

Scale: 1:100 at A3

Figure 5: TOILET BLOCK



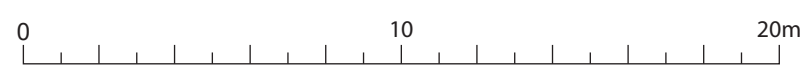



KEY TO PHASES:

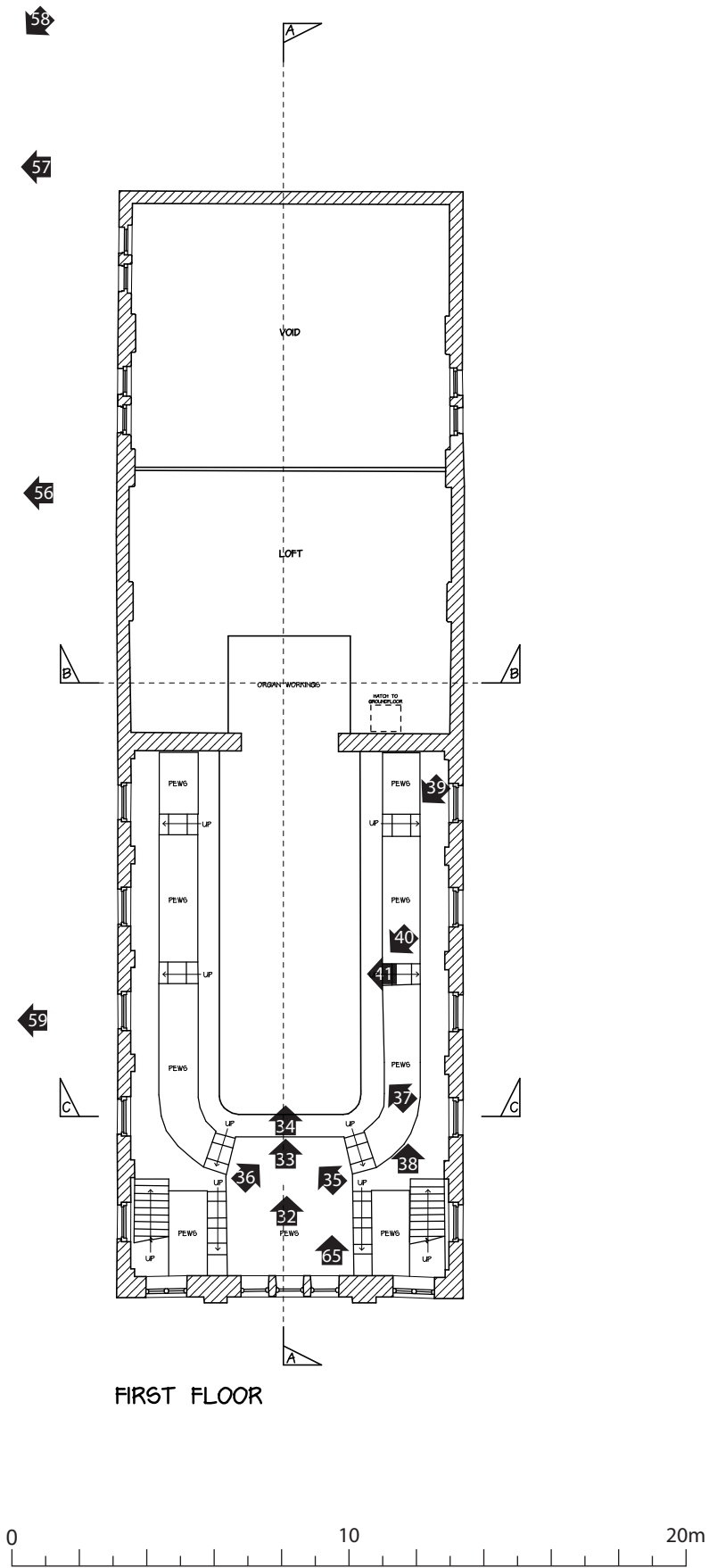
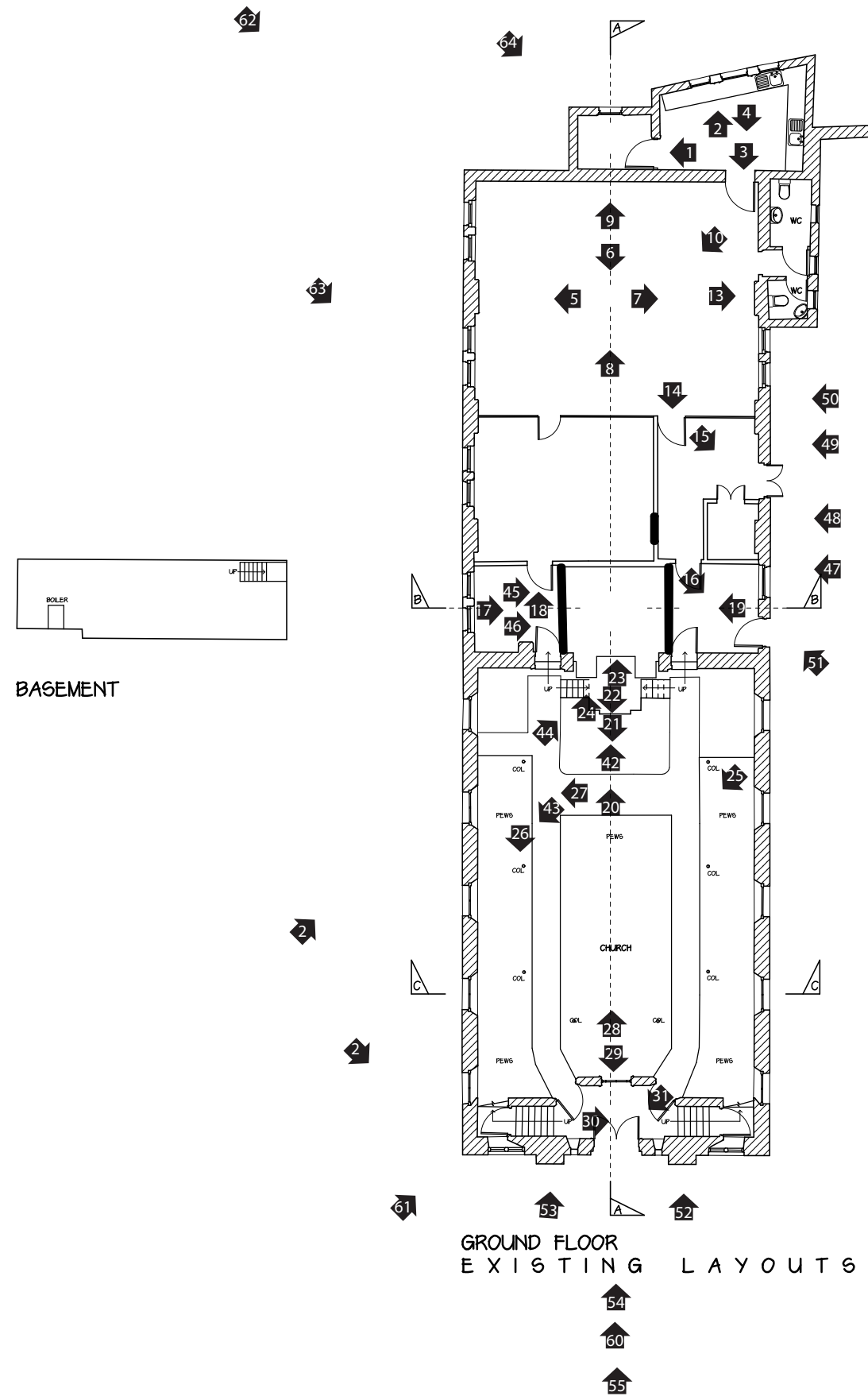
- Phase I 1874
- Phase II 1900, with organ added in 1925
- Phase III 1995

GROUND FLOOR  
EXISTING LAYOUTS

BUILDING SURVEY UNDERTAKEN AND PREPARED BY LIME GREEN ASSOCIATES



Job Title: Longbridge Chapel Llanidloes
Drawing Title: Phased Plan
Date: October 2024
Drawn By: Dr Kevin Blockley
Scale: 1:200 at A3
Figure 6: PHASED PLAN
 CAMBRIAN ARCHAEOLOGICAL PROJECTS




Job Title: Longbridge Chapel Llanidloes
Drawing Title: Photo Location Plans
Date: October 2020
Drawn By: Dr Kevin Blockley
Scale: 1:200 at A3
Figure 7: PHOTO LOCATIONS
 CAMBRIAN ARCHAEOLOGICAL PROJECTS



FIG 8: 1886-87 1st Edition OS map 6" to the mile  
(National Librray of Scotland)





FIG 9: 1903 2nd Edition OS map 6" to the mile  
(National Library of Scotland)



## PLATES



PLATE 1      Door to pantry. Looking north



PLATE 2      Windows in east wall of kitchen. Looking east



PLATE 3      West wall of kitchen and doorway to school room. Looking west



PLATE 4      Door between kitchen and school room. Looking west





PLATE 5      Windows in north wall of school room. Looking north



PLATE 6      West wall of school room. Looking west



PLATE 7 South wall of school room with doorway to toilet block. Looking south



PLATE 8 East wall of school room and doorway to kitchen. Looking east



PLATE 9      Oculus window high up in east wall of school room. Looking east



PLATE 10      Ceiling and two plaster roses in school room. Looking n-w





PLATE 11 Eastern plaster rose in school room



PLATE 12 Western plaster rose in school room



PLATE 13      Sample of wooden panelling on south wall of school room. Looking south

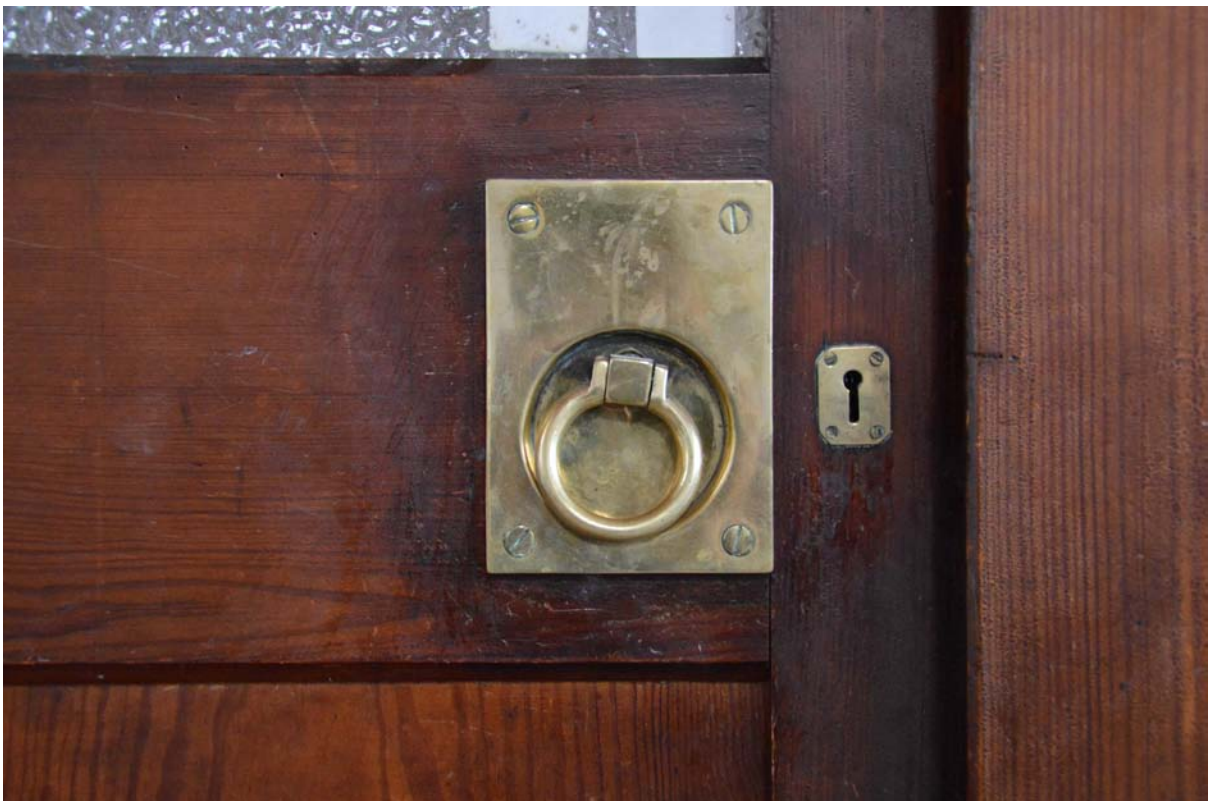


PLATE 14      Brass door handle on door between school room and lobby Looking west





PLATE 15      External door to lobby (left) and door to cupboard (right). Looking s-w



PLATE 16 External door in hall (left) and door to chapel (right). Looking s-w



PLATE 17 Wooden panelling on north side of hall (screening organ works).  
Looking north





PLATE 18      Screen between meeting room and school room. Looking east



PLATE 19      Wooden panelling on south side of store room (screening organ works).  
Looking south

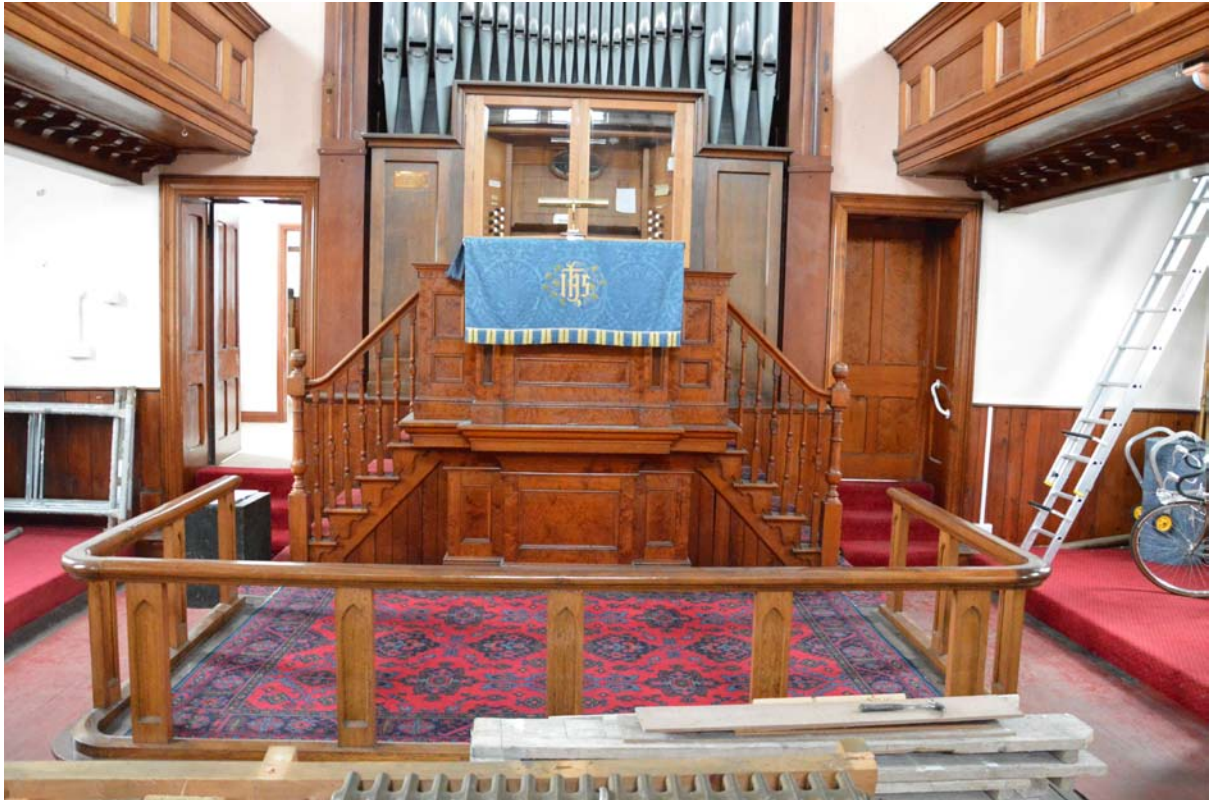


PLATE 20 Pulpit and railed area. Looking east

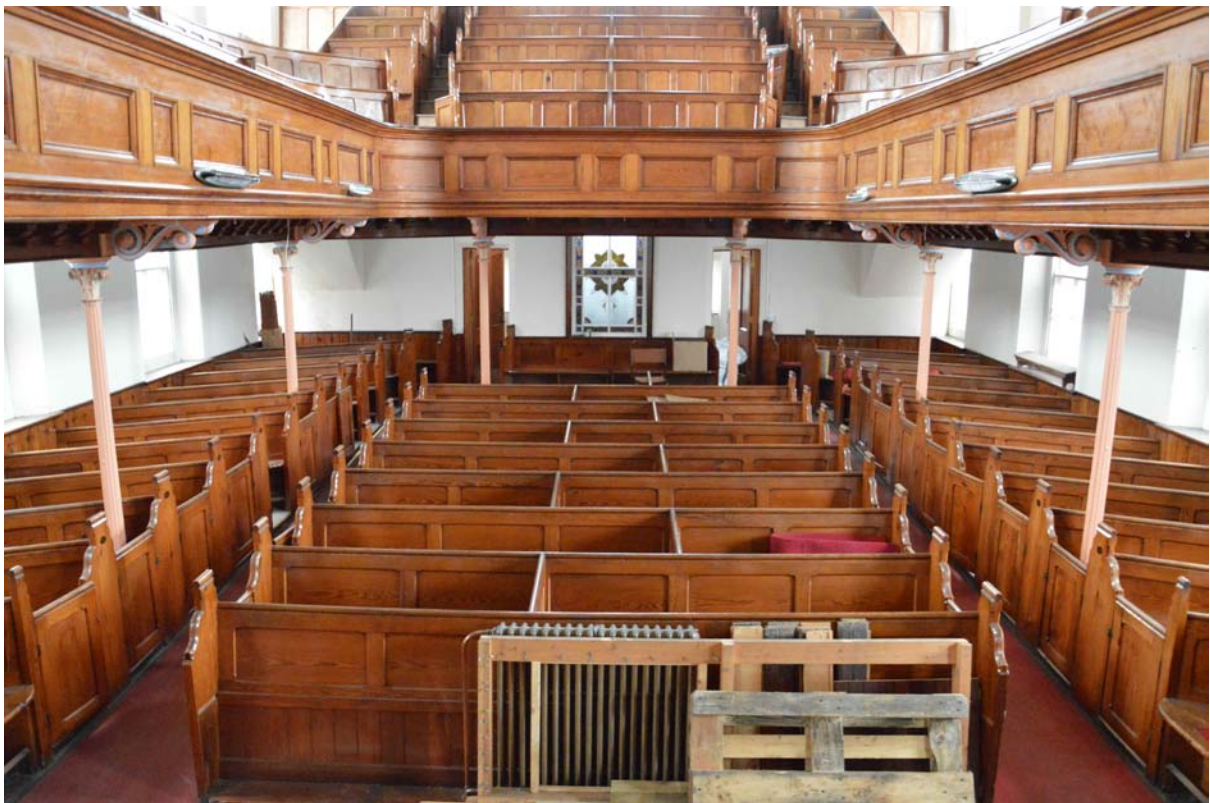


PLATE 21 Main body of chapel from pulpit. Looking west





PLATE 22 Main body of chapel from pulpit. Looking west



PLATE 23 Detail of organ keyboard. Looking east





PLATE 24 Commemorative plaque to keyboard. Looking east



PLATE 25 Main body of chapel and balcony. Looking n-e



PLATE 26      Decorative bracket supporting balcony. Looking west



PLATE 27      Side pews at east end. Looking north





PLATE 28 Main body of chapel at ground level. Looking east



PLATE 29 Decorative window in vestibule. Looking west



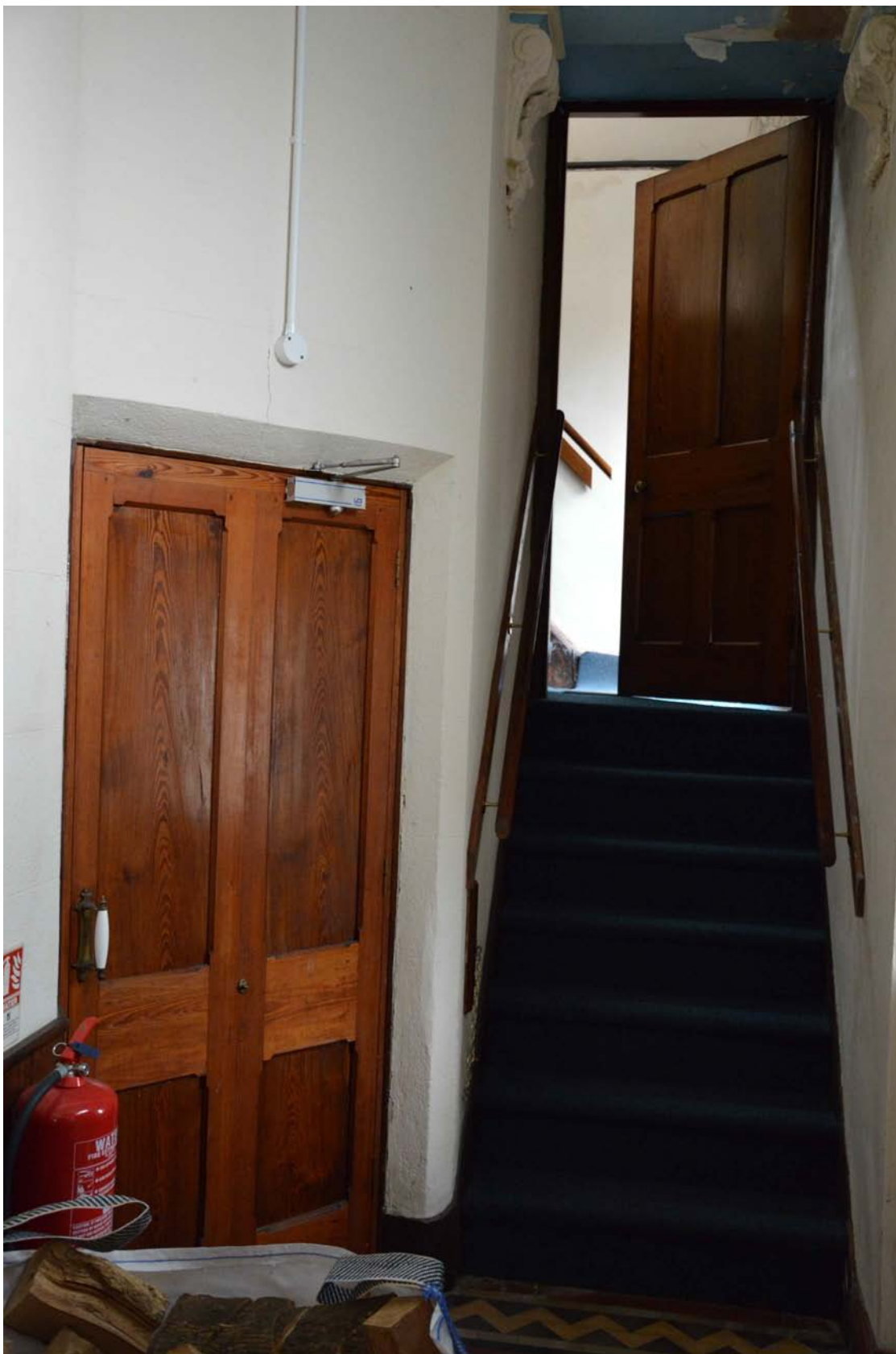


PLATE 30      Stairs to 1<sup>st</sup> floor and balcony. Looking south



PLATE 31 Main doors into chapel vestibule. Looking west





PLATE 32 Main body of chapel from 1<sup>st</sup> floor. Looking east



PLATE 33 Main body of chapel from 1<sup>st</sup> floor. Looking east





PLATE 34 Central area of ground floor pews looking from balcony. Looking east



PLATE 35 Pews on ground floor north side from balcony. Looking n-e





PLATE 36      1st floor pews on south side. Looking s-e



PLATE 37      1<sup>st</sup> floor pews at west end. Looking west



PLATE 38 1<sup>st</sup> floor pews on south side. Looking east

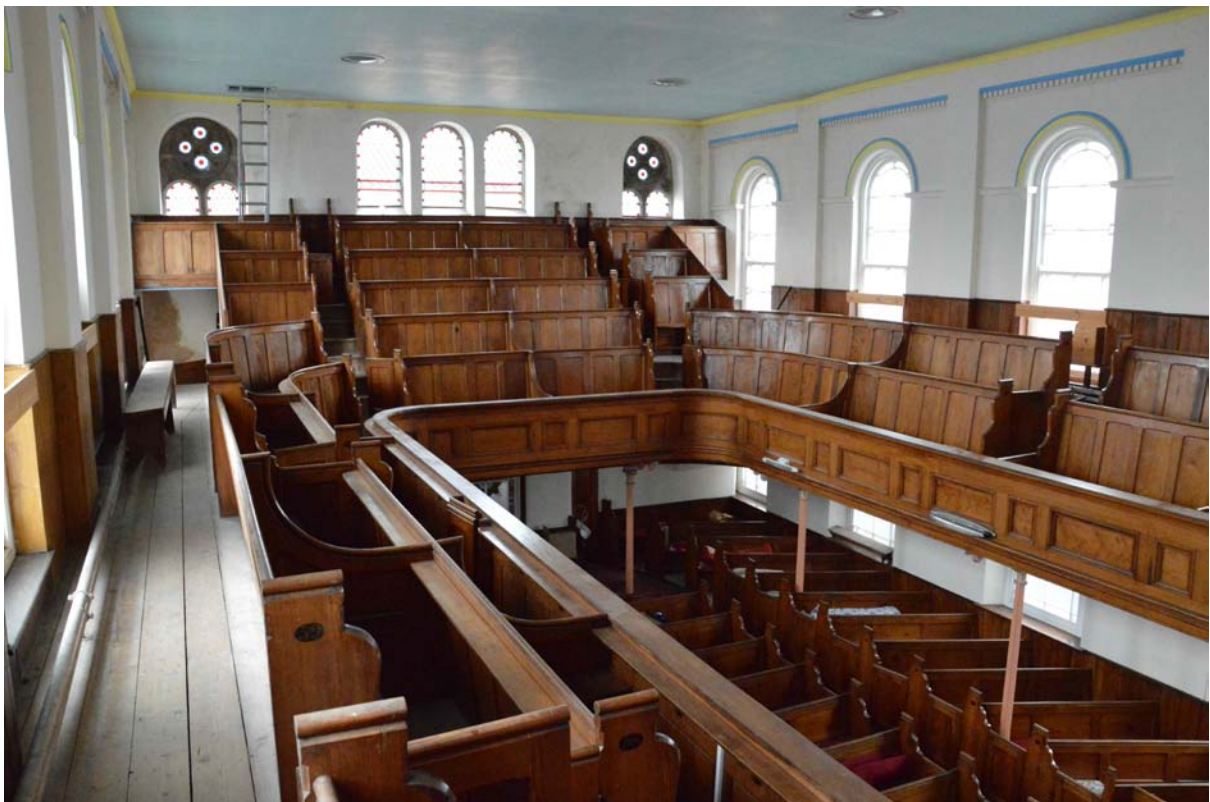


PLATE 39 1<sup>st</sup> floor pews general view. Looking n-w





PLATE 40      Ground floor pews, north side, from 1<sup>st</sup> floor. Looking n-w



PLATE 41      1<sup>st</sup> floor pews on north side from 1<sup>st</sup> floor. Looking north





PLATE 42      Pulpit. Looking east



PLATE 43      North aisle and north pews from low down. Looking west



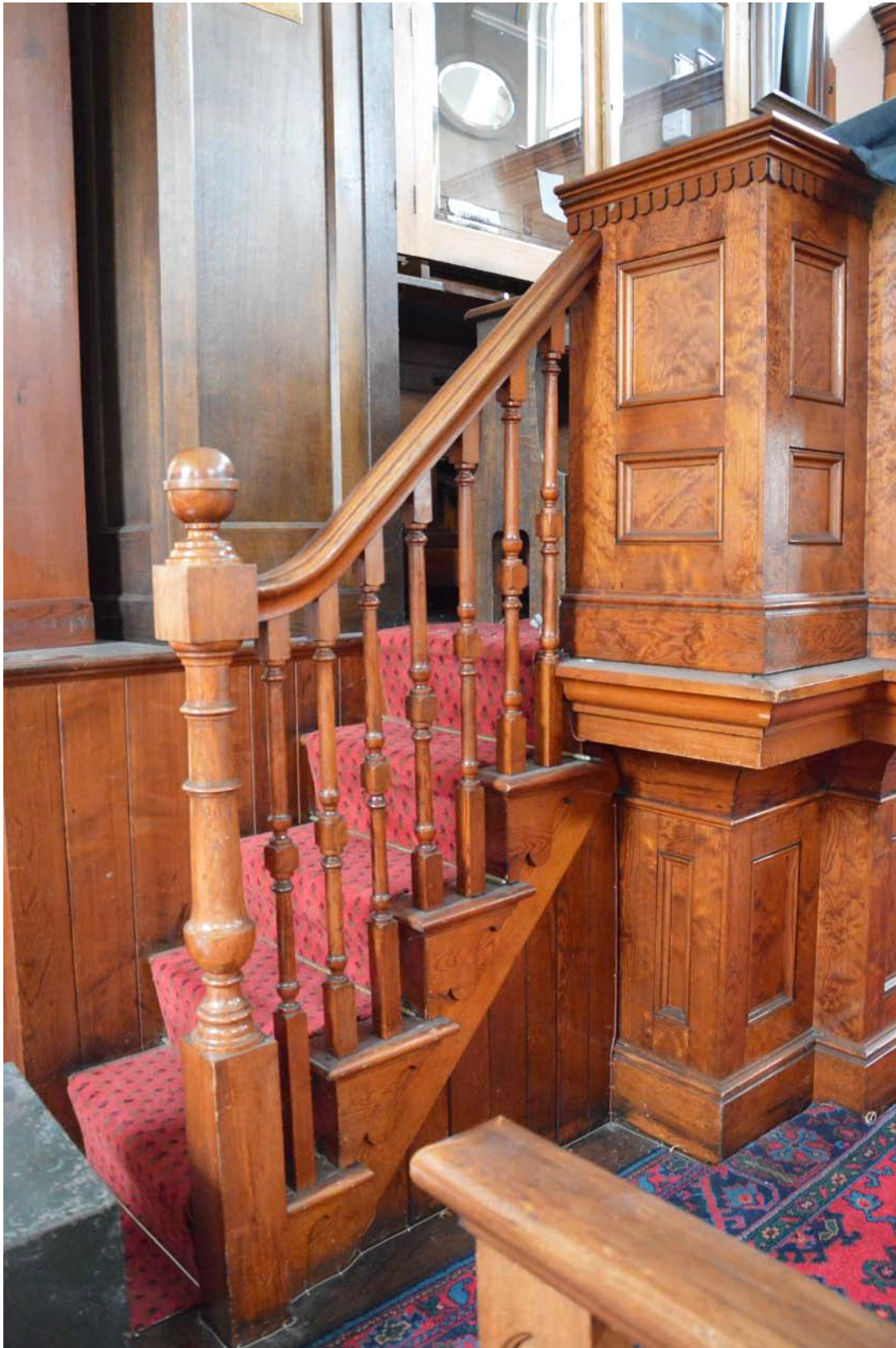


PLATE 44      North steps to pulpit. Looking s-e



PLATE 45      Organ works (east end). Looking south





PLATE 46      Organ works (west side). Looking south





PLATE 47 Commemorative stone laid by Mrs S Meddins, Nov 1900. Looking north



PLATE 48 Commemorative stone laid by Mr E Hamer, Nov 1900. Looking north





PLATE 49 Commemorative stone laid by the Teachers. Looking north

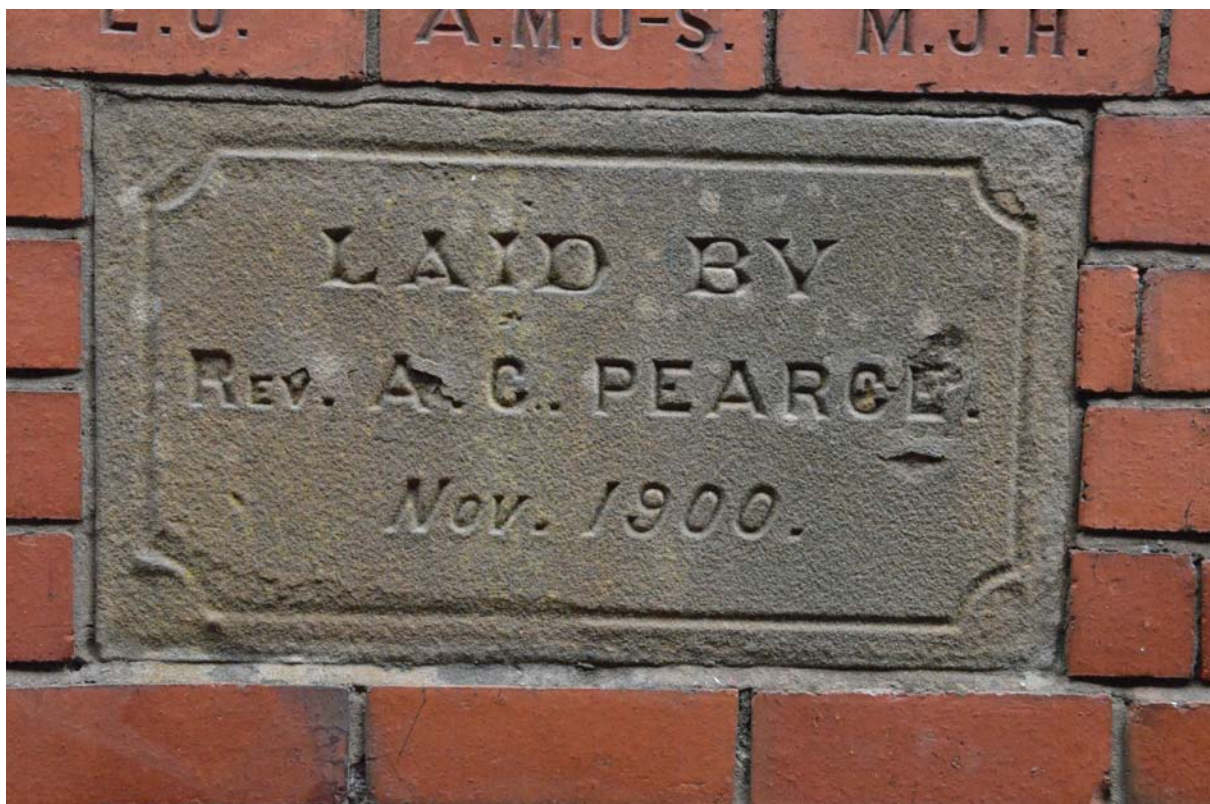


PLATE 50 Commemorative stone laid by Rev A C Pearce, Nov 1900. Looking north





PLATE 51      Extension added in 1900 and location of commemorative stones.  
Looking east



PLATE 52      Stone commemorating The Wesleyan Chapel erected 1802,  
enlarged 1822. Outside west elevation. Looking east





PLATE 53      Foundation stone to current chapel,  
laid April 3, 1874 (on west elevation). Looking east

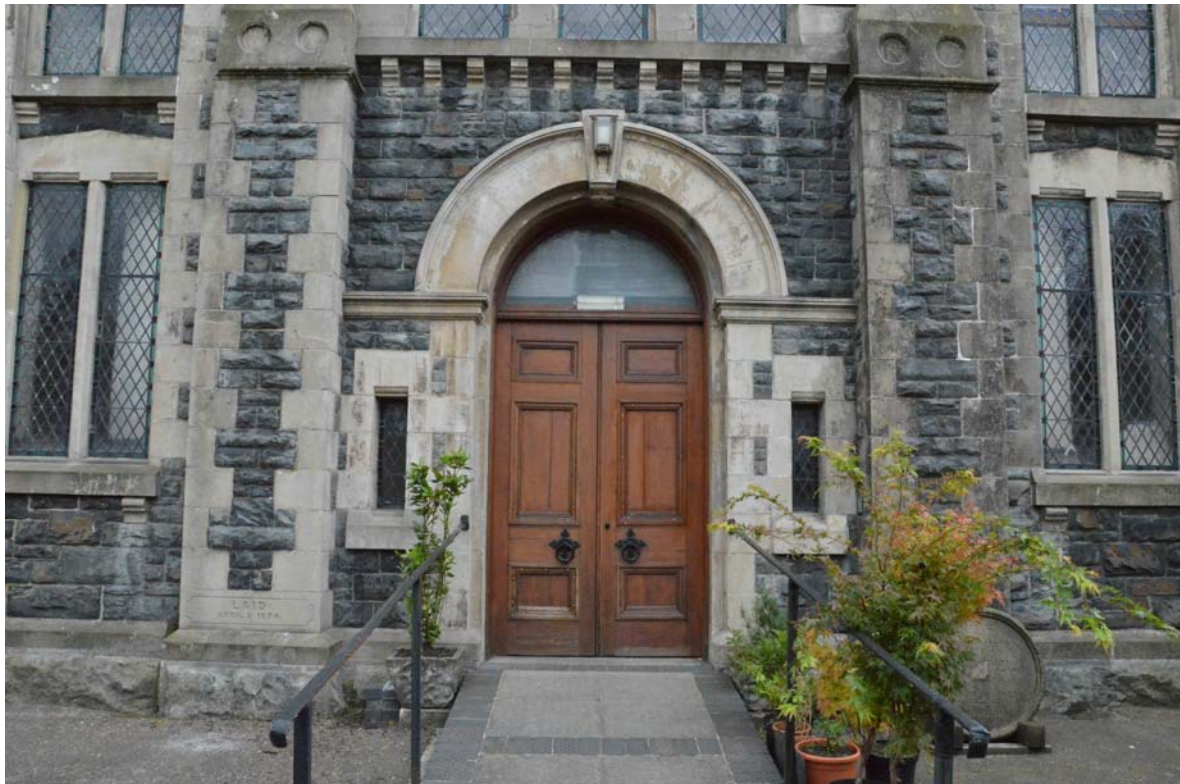


PLATE 54      West front entrance and location of commemorative stones. Looking east



PLATE 55 West elevation of chapel. Looking east



PLATE 56 South side of extensions. Looking north





PLATE 57 South side of extensions. Looking w-n-w



PLATE 58 South elevation of chapel and extensions. Looking w-n-w





PLATE 59 South elevation of chapel. Looking north



PLATE 60 Stone high up on west elevation. Wesleyan Methodist Chapel. Looking east



PLATE 61 North-west corner of chapel. Looking s-e



PLATE 62 North and east elevations of Chapel and extensions. Looking s-w





PLATE 63 North and west elevations of chapel and part of 1900 extension. Looking s-w



PLATE 64 Kitchen of 1900 extension. Looking s-w



PLATE 65      Timber roof trusses above main body of chapel. Looking east



## APPENDIX I: Archive of site photographs

<b>No</b>	<b>Description</b>	<b>Direction</b>	<b>Plate in report</b>
1	Door to pantry	n	1
2	Windows in east wall of kitchen	e	2
3	West wall of kitchen and doorway to school room	w	3
4	Door between kitchen and school room	w	4
5	Windows in north wall of school room	n	5
6	West wall of school room	w	6
7	South wall of school room with doorway to toilet block	s	7
8	East wall of school room and doorway to kitchen	e	8
9	Oculus window high up in east wall of school room	e	9
10	Ceiling and two plaster roses in school room	n-w	10
11	Eastern plaster rose in school room	vertical	11
12	Western plaster rose in school room	vertical	12
13	Sample of wooden panelling on south wall of school room	s	13
14	Brass door handle on door between school room and lobby	w	14
15	External door to lobby (left) and door to cupboard (right)	s-w	15
16	External door in hall (left) and door to chapel (right)	s-w	16
17	Wooden panelling on north side of hall (screening organ works)	n	17
18	Screen between meeting room and school room	e	18
19	Wooden panelling on south side of store room (screening organ works)	s	19
20	Pulpit and railed area	e	20
21-22	Main body of chapel from pulpit	w	21-22
23	Detail of organ keyboard	e	23
24	Commemorative plaque to keyboard	e	24
25	Main body of chapel and balcony	n-e	25
26	Decorative bracket supporting balcony	w	26
27	Side pews at east end	n	27
28	Main body of chapel at ground level	e	28
29	Decorative window in vestibule	w	29
30	Stairs to 1 <sup>st</sup> floor and balcony	s	30
31	Main doors into chapel vestibule	w	31
32-33	Main body of chapel from 1 <sup>st</sup> floor	e	32
34	Central area of ground floor pews looking from balcony	e	34
35	Pews on ground floor north side from balcony	n-e	35

Wesleyan Chapel, Longbridge Street, Llanidloes:  
Level 2 Building Record, 2024

36	1st floor pews on south side	s-e	36
37	1 <sup>st</sup> floor pews at west end	w	37
38	1 <sup>st</sup> floor pews on south side	e	38
39	1 <sup>st</sup> floor pews general view	n-w	39
40	Ground floor pews, north side, from 1 <sup>st</sup> floor	n-w	40
41	1 <sup>st</sup> floor pews on north side from 1 <sup>st</sup> floor	n	41
42	Pulpit	e	42
43	North aisle and north pews from low down	w	43
44	North steps to pulpit	s-e	44
45	Organ works (east end)	s	45
46	Organ works (west side)	s	46
47	Commemorative stone laid by Mrs S Meddins Nov 1900	n	47
48	Commemorative stone laid by Mr E Hamer Nov 1900	n	48
49	Commemorative stone laid by the Teachers	n	49
50	Commemorative stone laid by Rev A C Pearce Nov 1900	n	50
51	Extension added in 1900 and location of commemorative stones	e	51
52	Stone commemorating The Wesleyan Chapel erected 1802, enlarged 1822. Outside west elevation	e	52
53	Foundation stone to current chapel laid April 3, 1874 (on west elevation)	e	53
54	West front entrance and location of commemorative stones	e	54
55	West elevation of chapel	e	55
56	South side of extensions	n	56
57	South side of extensions	w-n-w	57
58	South elevation of chapel and extensions	w-n-w	58
59	South elevation of chapel	n	59
60	Stone high up on west elevation. Wesleyan Methodist Chapel	e	60
61	North-west corner of chapel	s-e	61
62	North and east elevations of Chapel and extensions	s-w	62
63	North and west elevations of chapel and part of 1900 extension	s-w	63
64	Kitchen of 1900 extension	s-w	64
65	Timber roof trusses above main body of chapel	e	65

**APPENDIX II:**  
**ARCHIVE COVER SHEET**

**Wesleyan Methodist Chapel, Longbridge Street, Llanidloes:  
Level 2 Building Record 2024**

Site Name:	Wesleyan Methodist Chapel, Llanidloes
Site Code:	WMCL/BR/24
PRN:	N/A
NPRN :	11403
SAM:	N/A
Other Ref No:	CAP Project No. 1299
NGR:	SN954284661
Site Type:	Urban
Project Type:	Archaeological Building Record
Project Officer:	Dr Kevin Blockley
Project Dates:	September-October 2020 and July 2024
CAP report number:	737
Categories Present:	N/A
Location of Original Archive:	RCAHMW
Location of duplicate Archives:	N/A
Number of Finds Boxes:	N/A
Location of Finds:	N/A
Museum Reference:	N/A
Copyright:	CAP Ltd
Restrictions to access:	None