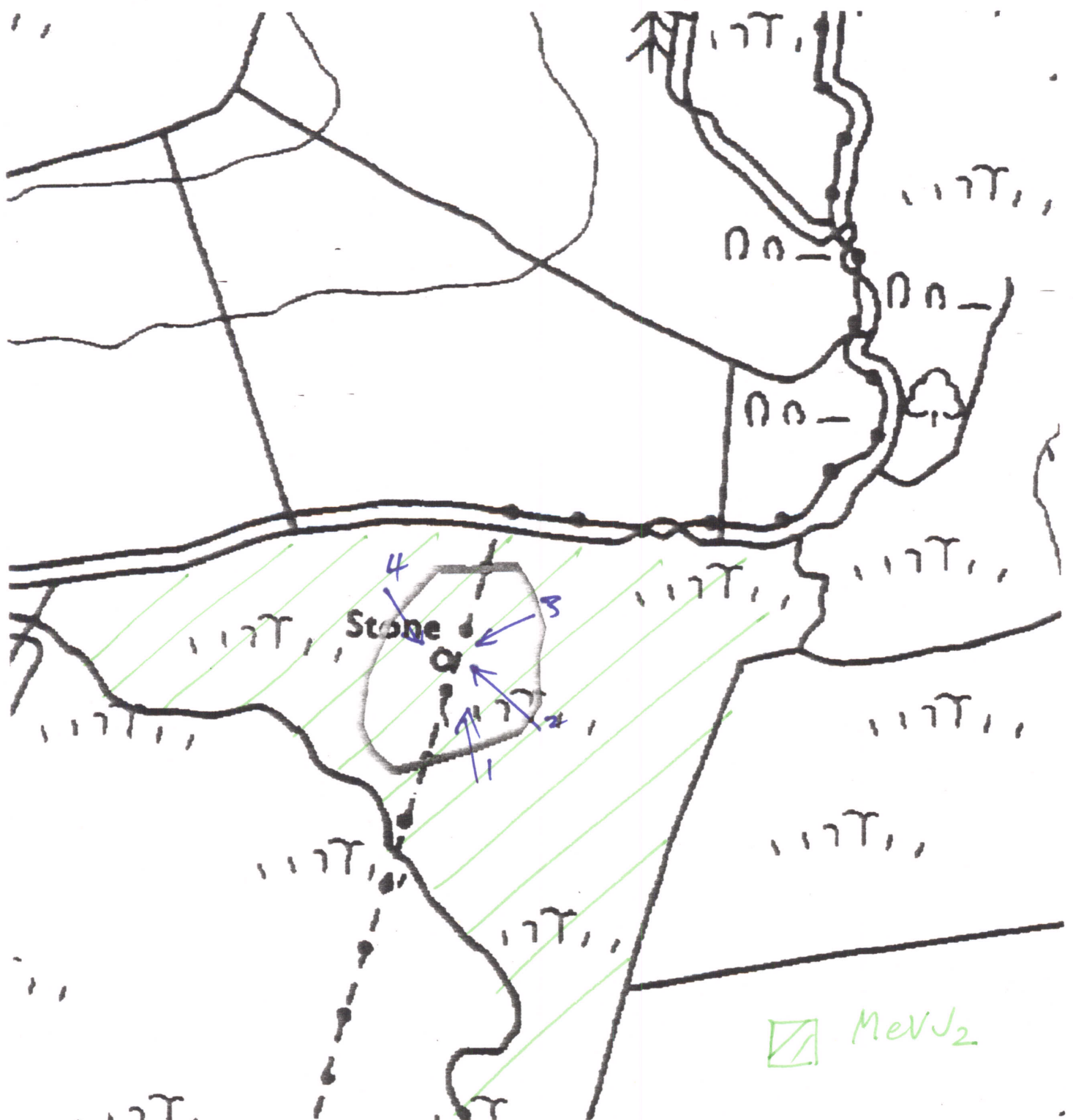


2099

Radnor ESA

SO1463 5850



# RADNOR ESA, HISTORIC MONITORING

7

## BASELINE 1993

A

OS 1:10000 SHEET: <del>SN</del> /SO 15 NW	GRID REF: <del>SN</del> /SO 1463 5850
PRN: 2099 SITE NAME: <i>Standing Stone</i>	
AIR PHOTO No <i>87.7</i>	LANDSCAPE TYPE: <i>Improved upland</i>
No GROUND PHOTOS: <i>5</i>	
DATE SURVEYED: <i>23.2.94</i>	SURVEYED BY: <i>JACF</i>
ACCESS: <i>MR LEWIS</i> <i>4 FEB 94</i>	

B

LAND COVER:	<i>SNCG : M e v d<sub>2</sub></i> <i>Very wet + boggy</i>
SITE:	
HALO:	

RADNOR ESA, HISTORIC MONITORING

BASELINE 1993

PRN:

C

LAND MANAGEMENT:

SITE:

SNAG little sign of grazing  
Some evidence of tractor tracks

HALO:

D

DESCRIPTION/CONDITION OF MONUMENT:

stone is lying down flat in wet +  
boggy land  
almost obscured by vegetation  
(thickly M<sub>2</sub>)

E

POTENTIALLY THREATENING FACTORS: (see Table 1)

little threat. no public access  
main threat is agricultural improvement  
+ drainage but this seems unlikely  
if not already done.

very little sign of grazing in field

CONTINUED? YES ☐ NO ☐

[NB is actual fact drainage might improve  
condition of monument by making it more obvious?]

**RADNOR ESA, HISTORIC MONITORING**

**BASELINE 1993**

**SUPPLEMENTARY NOTES TO FIELD SURVEYS    PAGE ..... OF ..... PRN:**

--

TABLE 1

RADNOR ESA, HISTORIC MONITORING, BASELINE 1993

PRN:

POTENTIALLY THREATENING FACTORS			
AGENT	PRESENT?	ACTION	SIGNIFICANCE
ANIMALS <i>none</i>	<input type="checkbox"/>  <input type="checkbox"/> <input type="checkbox"/> <input type="checkbox"/>	<ul style="list-style-type: none"> <li>■ Burrowing - badgers, foxes, rabbits</li> <li>■ Overgrazing - cattle, horses, sheep</li> <li>■ Poaching - cattle, horses, sheep</li> <li>■ Rubbing point/erosion focus point - cattle, horses, sheep</li> </ul>	<ul style="list-style-type: none"> <li>■ damage/disturbance to underground artefacts</li> <li>■ loss of vegetation cover/soil damage, leading to erosion</li> <li>■ as above, possible damage to upstanding feature</li> </ul>
HUMAN <i>none</i>	<input type="checkbox"/>  <input type="checkbox"/> <input type="checkbox"/> <input type="checkbox"/> <input type="checkbox"/> <input type="checkbox"/> <input type="checkbox"/>	<ul style="list-style-type: none"> <li>■ Demolition or removal of monument</li> <li>■ Rubbish Dumping</li> <li>■ Trampling/poaching - on footpaths/desire lines</li> <li>■ Mountain Bikes/Motorcross etc</li> <li>■ Deep Ploughing/Drainage Works/Building</li> <li>■ Shallow cultivation/Reseeds</li> <li>■ Tree/Scrub removal by uprooting</li> <li>■ Scrub Burning in Bonfires</li> </ul>	<ul style="list-style-type: none"> <li>■ active removal of artefacts/monument</li> <li>■ infilling/contamination</li> <li>■ loss of vegetation cover/soil damage leading to erosion</li> <li>■ as above</li> <li>■ damage/disturbance of artefacts</li> <li>■ as above</li> <li>■ as above</li> <li>■ intense heat at point source, damage to artefacts and alteration of soil profile</li> </ul>
VEGETATION <i>none</i>	<input type="checkbox"/>  <input type="checkbox"/>  <input type="checkbox"/>	<ul style="list-style-type: none"> <li>■ Root damage - trees and scrub (especially where deep rooted (heavy crowns)</li> <li>■ Tree Windthrow</li> <li>■ Scrub Encroachment - bracken, gorse, rhodedendron, thorn</li> </ul>	<ul style="list-style-type: none"> <li>■ damage/disturbance of artefacts</li> <li>■ potential massive damage/disturbance</li> <li>■ root or rhizome damage/disturbance (bracken least significant)</li> </ul>
WEATHER/SITE FACTORS	<input type="checkbox"/> <input type="checkbox"/>	<ul style="list-style-type: none"> <li>■ High rainfall/windspeeds - exposure</li> <li>■ High Gradient</li> </ul>	<ul style="list-style-type: none"> <li>■ greater erosion risk than level, non exposed site</li> </ul>



## RADNOR ESA HISTORIC MONITORING

RESURVEY 1996

A

OS 1:10,000 SHEET: SO/ <del>SH</del> SN 15 NN		GRID REF: SO/ <del>SH</del> SN 1463 5856	
PRN: 2099		SITE NAME: Standing Stone	
AIR PHOTO No: 8717		LANDSCAPE TYPE: improved upland	
No GROUND PHOTOS: 4			
DATE RESURVEYED:		RESURVEYED BY: CB	

IF CHANGES TO ANY OF THE FOLLOWING HAVE OCCURRED SINCE THE BASELINE,  
DETAIL THESE CHANGES IN THE APPROPRIATE SECTION OF THE RESURVEY PROFORMA.

- A: CHANGES TO ACCESS?  
B: CHANGES TO LANDCOVER  
C: CHANGES TO LAND MANAGEMENT  
D: CHANGES IN DESCRIPTION/CONDITION OF MONUMENT  
E: CHANGES IN POTENTIALLY THREATENING FACTORS  
F: CHANGE IN RATE OF DECAY

NO <input checked="" type="checkbox"/>	YES
NO <input checked="" type="checkbox"/>	YES
NO <input checked="" type="checkbox"/>	YES
NO <input checked="" type="checkbox"/>	YES <input checked="" type="checkbox"/>
NO <input checked="" type="checkbox"/>	YES
NO <input checked="" type="checkbox"/>	YES

A: ACCESS

B: LANDCOVER

## C:LAND MANAGEMENT

## D:DESCRIPTION/CONDITION OF MONUMENT

little change - possibly a few less  
rushes - quite wet + boggy around  
the base of the monument.

## E:POTENTIALLY THREATENING FACTORS (see table 1)

F

RATE OF DECAY:

STABLE

SLOW

RAPID

CONTINUED?

YES

NO

RADNOR ESA, HISTORIC MONITORING

RESURVEY 1996

SUPPLEMENTARY NOTES TO FIELD SURVEYS

PAGE..... OF..... PRN:

Note - photos may be a bit dark  
Had difficulties with camera, light fading



TABLE 1

RADNOR ESA, HISTORIC MONITORING, RESURVEY 1996

PRN

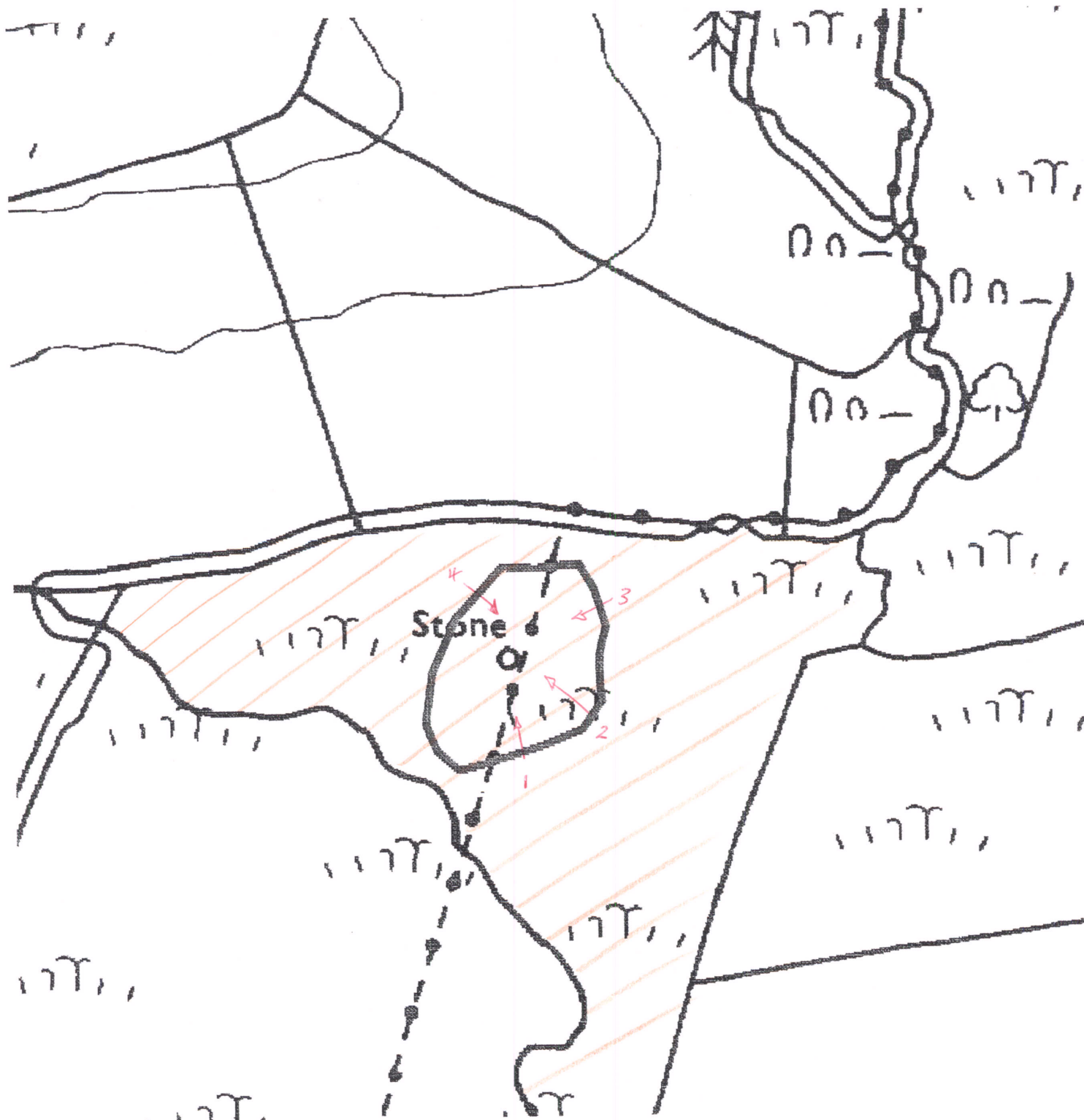
POTENTIALLY THREATENING FACTORS				
AGENT	PRESENT		ACTION	SIGNIFICANCE
ANIMALS	Y	N	Burrowing - badgers, foxes, rabbits	Damage/disturbance to underground artefacts
	Y	N	Overgrazing - cattle, horses, sheep	Loss of vegetation cover/soil
	Y	N	Poaching - cattle, horses, sheep	Damage to vegetation cover, leading to erosion
	Y	N	Rubbing point/erosion focus point - cattle, horses, sheep	As above, plus possible damage to upstanding features
HUMAN	Y	N	Demolition or removal of monument	Active removal of artefacts/monument
	Y	N	Rubbish dumping	Infilling/contamination
	Y	N	Trampling/poaching - on footpaths/desire lines	Loss of vegetation cover/soil damage resulting in erosion
	Y	N	Mountain bikes/Motorcross etc	As above
	Y	N	Deep ploughing/Drainage works/Building	Damage/disturbance of artefacts
	Y	N	Shallow cultivation/reseeds	As above
	Y	N	Tree/Scrub removal by uprooting	As above
	Y	N	Scrub burning in bonfires	Intense heat at point source, damage to artefacts and alteration of soil profile
VEGETATION	Y	N	Root damage - trees and scrub (especially where deep rooted - heavy crowns)	Damage/disturbance of artefacts
	Y	N	Tree windthrow	Potential massive damage/disturbance
	Y	N	Scrub encroachment - bracken, gorse, rhodedendron, thorn	Root or rhizome damage/disturbance (bracken least significant)
WEATHER/SITE FACTORS	Y	N	High rainfall/windspeeds - exposure	Greater erosion risk than level, non exposed site
	<u>Y</u>	N	High gradient	

/// meV<sub>u2</sub>

2099

Radnor ESA

SO1463 5850



AS 1467

# RADNOR ESA HISTORIC MONITORING RESURVEY 2000

OS 1:10,000 SHEET: SO/SN		GRID REF: SO/SN 1463 5850	
PRN: 2099		SITE NAME:	
AIR PHOTO No:		LANDSCAPE TYPE:	
No. GROUND PHOTOS: 5			
DATE RESURVEYED: 25/7/00.		RESURVEYED BY: GAA.	

IF CHANGES TO ANY OF THE FOLLOWING HAVE OCCURRED SINCE THE BASELINE, DETAIL THESE CHANGES IN THE APPROPRIATE SECTION OF THE RESURVEY PROFORMA.

A: CHANGES TO ACCESS

B: CHANGES TO LAND COVER

C: CHANGES TO LAND MANAGEMENT

D: CHANGES IN DESCRIPTION/CONDITION OF MONUMENT

E: CHANGES IN POTENTIALLY THREATENING FACTORS

F: CHANGE IN RATE OF DECAY

NO	YES ✓
NO ✓	YES
NO ✓	YES
NO ✓	YES
NO ✓	YES
NO	YES

A: ACCESS

Rhewsey fm. !

**B: LANDCOVER**

SITE:

HALO:

**C: LAND MANAGEMENT**

SITE:

HALO:

**D: DESCRIPTION/CONDITION OF MONUMENT**

**E: POTENTIALLY THREATENING FACTORS** (see table at back of proforma)**F: RATE OF DECAY:**

STABLE ✓

SLOW

RAPID

CONTINUED?

YES

NO ✓





POTENTIALLY THREATENING FACTORS			
AGENT	PRESENT		SIGNIFICANCE
ANIMALS	Y	N	Burrowing – badgers, foxes, rabbits
	Y	N	Overgrazing – cattle, horses, sheep
	Y	N	Poaching – cattle, horses, sheep
	Y	N	Rubbing point/erosion focus point – cattle, horses, sheep
HUMAN	Y	N	Demolition or removal of monument
	Y	N	Rubbish dumping
	Y	N	Trampling/poaching – on footpaths/desire lines
	Y	N	Mountain bikes/Motorcross etc
	Y	N	Deep ploughing/Drainage works/Building
	Y	N	Shallow cultivation/reseeds
	Y	N	Tree/Scrub removal by uprooting
	Y	N	Scrub burning
VEGETATION	Y	N	Root damage – trees and scrub (especially where deep rooted – heavy crowns)
	Y	N	Tree windthrow
	Y	N	Scrub encroachment – bracken, gorse, rhododendron, thorn
WEATHER/SITE FACTORS	Y	N	High rainfall/windspeeds – exposure
	Y	N	High gradient