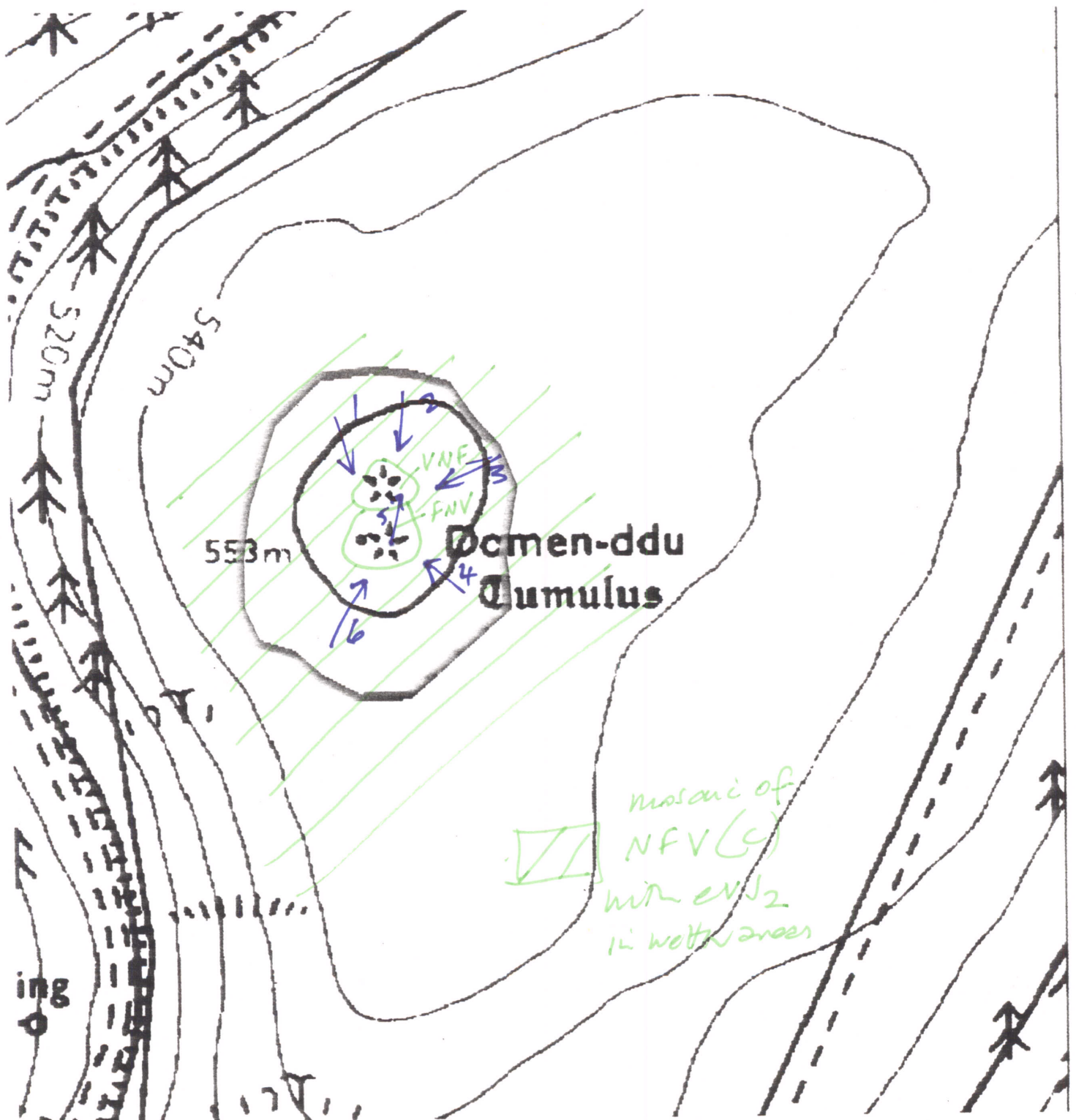


959

Radnor ESA

SOO169 7826



RADNOR ESA. HISTORIC MONITORING

BASELINE 1993

A

OS 1:10000 SHEET: SN /SO 07 NW	GRID REF: SN /SO 0169 7826
PRN: 959 SITE NAME: <i>Roundbarrow</i>	
AIR PHOTO No <i>03 84 054</i> <i>60mW</i>	LANDSCAPE TYPE: <i>Improved Upland.</i>
No GROUND PHOTOS: <i>6</i>	
DATE SURVEYED: <i>4.3.94</i>	SURVEYED BY: <i>JACF</i>
ACCESS: <i>Mr Hamer</i> <i>Trinnant farm</i>	

B

LAND COVER: <i>5veg generally dry bank ^{degraded} heathland</i>
SITE: <i>2 Tomwhin (1) low, VNF</i> <i>(2) higher FNV</i>
HALO: <i>remainder of site NFV some (patches)</i> <i>with ev + S₂ in better areas</i> <i>is form a mosaic of veg. types</i>

RADNOR ESA, HISTORIC MONITORING

BASELINE 1993

PRN:

C

LAND MANAGEMENT:

SITE: SNRA for Grazing
seems to be little grazed now
but looks overgrazed in past
HALO: (ie heather grazed out)

no sheep on 4.3.94 but signs of
some winter grazing

Access difficult for farming operations.

D

DESCRIPTION/CONDITION OF MONUMENT:

monument forms 2 mound
1 larger with pile of stones on top
1 smaller + lower.
veg. different to most of site
some evidence of sheep damage to larger mound
(ie scrapping) + chafes damage to sand

E

POTENTIALLY THREATENING FACTORS: (see Table 1)

little threat apart from ~~the~~ grazing.
Site is general is not overgrazed, but
there is sheep damage to larger mound
with stones dislodged by sheep scrapping
to public access.

Very exposed site

CONTINUED? YES ☐ NO ☐

RADNOR ESA, HISTORIC MONITORING

BASELINE 1993

SUPPLEMENTARY NOTES TO FIELD SURVEYS PAGE OF PRN:

TABLE 1

RADNOR ESA, HISTORIC MONITORING, BASELINE 1993

PRN:

POTENTIALLY THREATENING FACTORS			
AGENT	PRESENT?	ACTION	SIGNIFICANCE
ANIMALS <i>on larger mound</i>	<input type="checkbox"/> <input type="checkbox"/> <input type="checkbox"/> <input checked="" type="checkbox"/>	■ Burrowing - badgers, foxes, rabbits ■ Overgrazing - cattle, horses, sheep ■ Poaching - cattle, horses, sheep ■ Rubbing point/erosion focus point - cattle, horses, sheep	■ damage/disturbance to underground artefacts ■ loss of vegetation cover/soil damage, leading to erosion ■ as above, possible damage to upstanding feature
HUMAN <i>none</i>	<input type="checkbox"/> <input type="checkbox"/> <input type="checkbox"/> <input type="checkbox"/> <input type="checkbox"/> <input type="checkbox"/> <input type="checkbox"/>	■ Demolition or removal of monument ■ Rubbish Dumping ■ Trampling/poaching - on footpaths/desire lines ■ Mountain Bikes/Motorcross etc ■ Deep Ploughing/Drainage Works/Building ■ Shallow cultivation/Reseeds ■ Tree/Scrub removal by uprooting ■ Scrub Burning in Bonfires	■ active removal of artefacts/monument ■ infilling/contamination ■ loss of vegetation cover/soil damage leading to erosion ■ as above ■ damage/disturbance of artefacts ■ as above ■ as above ■ intense heat at point source, damage to artefacts and alteration of soil profile
VEGETATION <i>none</i>	<input type="checkbox"/> <input type="checkbox"/> <input type="checkbox"/>	■ Root damage - trees and scrub (especially where deep rooted (heavy crowns) ■ Tree Windthrow ■ Scrub Encroachment - bracken, gorse, rhododendron, thorn	■ damage/disturbance of artefacts ■ potential massive damage/disturbance ■ root or rhizome damage/disturbance (bracken least significant)
WEATHER/SITE FACTORS	<input checked="" type="checkbox"/> <input type="checkbox"/>	■ High rainfall/windspeeds - exposure ■ High Gradient	■ greater erosion risk than level, non exposed site

WC1006

Very exposed site (w. sheep damage here?)

RADNOR ESA HISTORIC MONITORING

RESURVEY 1996

A

OS 1:10,000 SHEET: SO/SH/SN 07 NW		GRID REF: SO/SH/SN 0169 7826	
PRN: 959 SITE NAME: Dohen - DDU - (ROUND BARROW)			
AIR PHOTO No: 03-84-054		LANDSCAPE TYPE:	
No GROUND PHOTOS: 6			
DATE RESURVEYED: 10/2/97		RESURVEYED BY: GA Hopwood.	

IF CHANGES TO ANY OF THE FOLLOWING HAVE OCCURRED SINCE THE BASELINE,
DETAIL THESE CHANGES IN THE APPROPRIATE SECTION OF THE RESURVEY PROFORMA.

A: CHANGES TO ACCESS?
B: CHANGES TO LANDCOVER
C: CHANGES TO LAND MANAGEMENT
D: CHANGES IN DESCRIPTION/CONDITION OF MONUMENT
E: CHANGES IN POTENTIALLY THREATENING FACTORS
F: CHANGE IN RATE OF DECAY

NO ✓	YES
NO ✓	YES
NO ✓	YES
NO	YES ✓
NO ✓	YES
NO	YES

A: ACCESS

Mr Hawer - Thimnaut Pm.

B: LANDCOVER

C:LAND MANAGEMENT

D:DESCRIPTION/CONDITION OF MONUMENT

As per baseline description but cairn has been rebuilt on top of mound. Now a more substantial square cairn approx 1.5m high. Sheep scrape does not appear to have worsened much - no other damage visible. Monument is probably fairly stable at the moment.

E:POTENTIALLY THREATENING FACTORS (see table 1)

Possible sheep damage, and site V exposed (50 mph wind when surveyed on 10/2/97!)

F

RATE OF DECAY:

STABLE

SLOW

RAPID

CONTINUED?

YES

NO

RADNOR ESA, HISTORIC MONITORING

RESURVEY 1996

SUPPLEMENTARY NOTES TO FIELD SURVEYS

PAGE..... OF..... PRN:

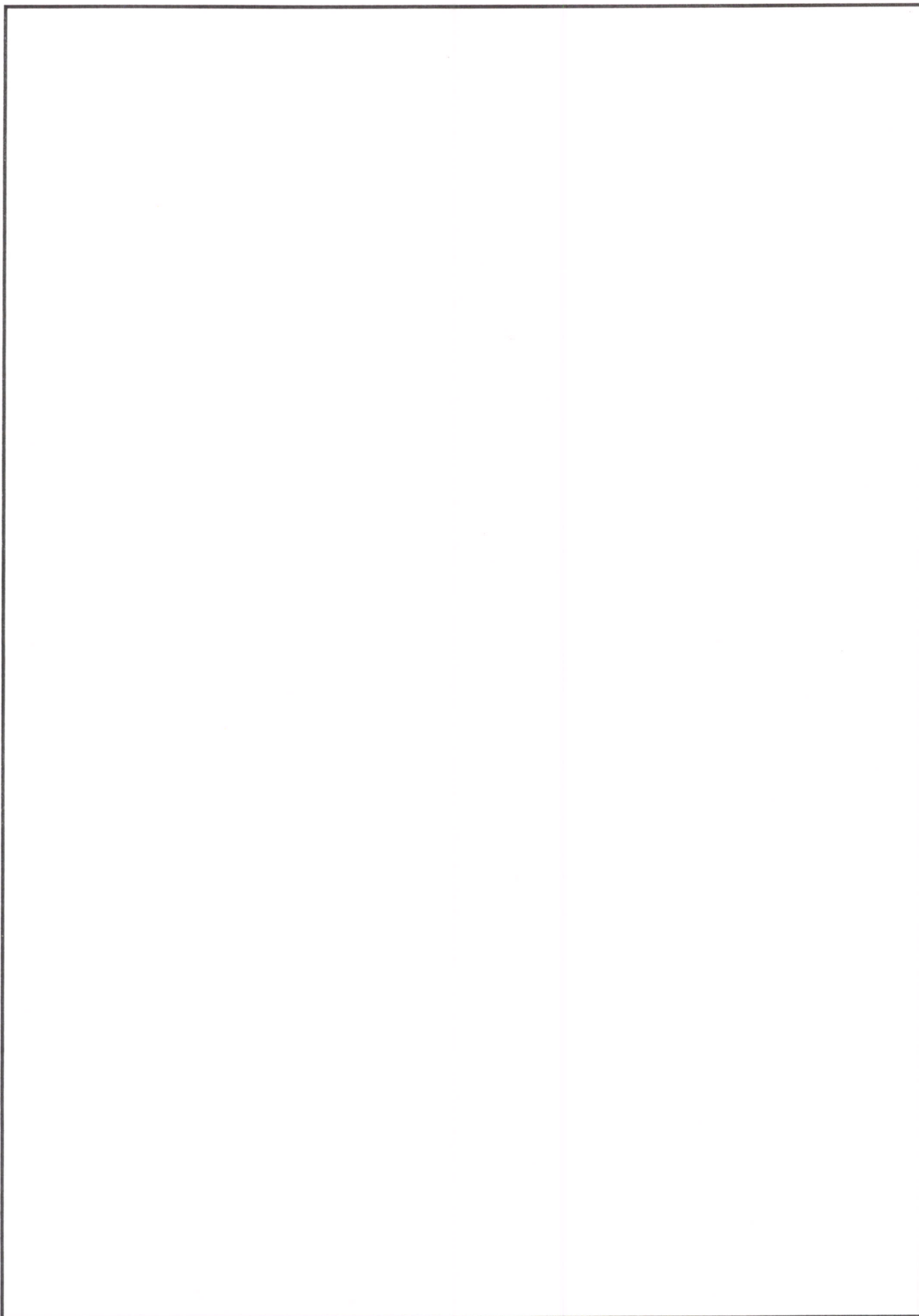





TABLE 1

RADNOR ESA, HISTORIC MONITORING, RESURVEY 1996

PRN 959

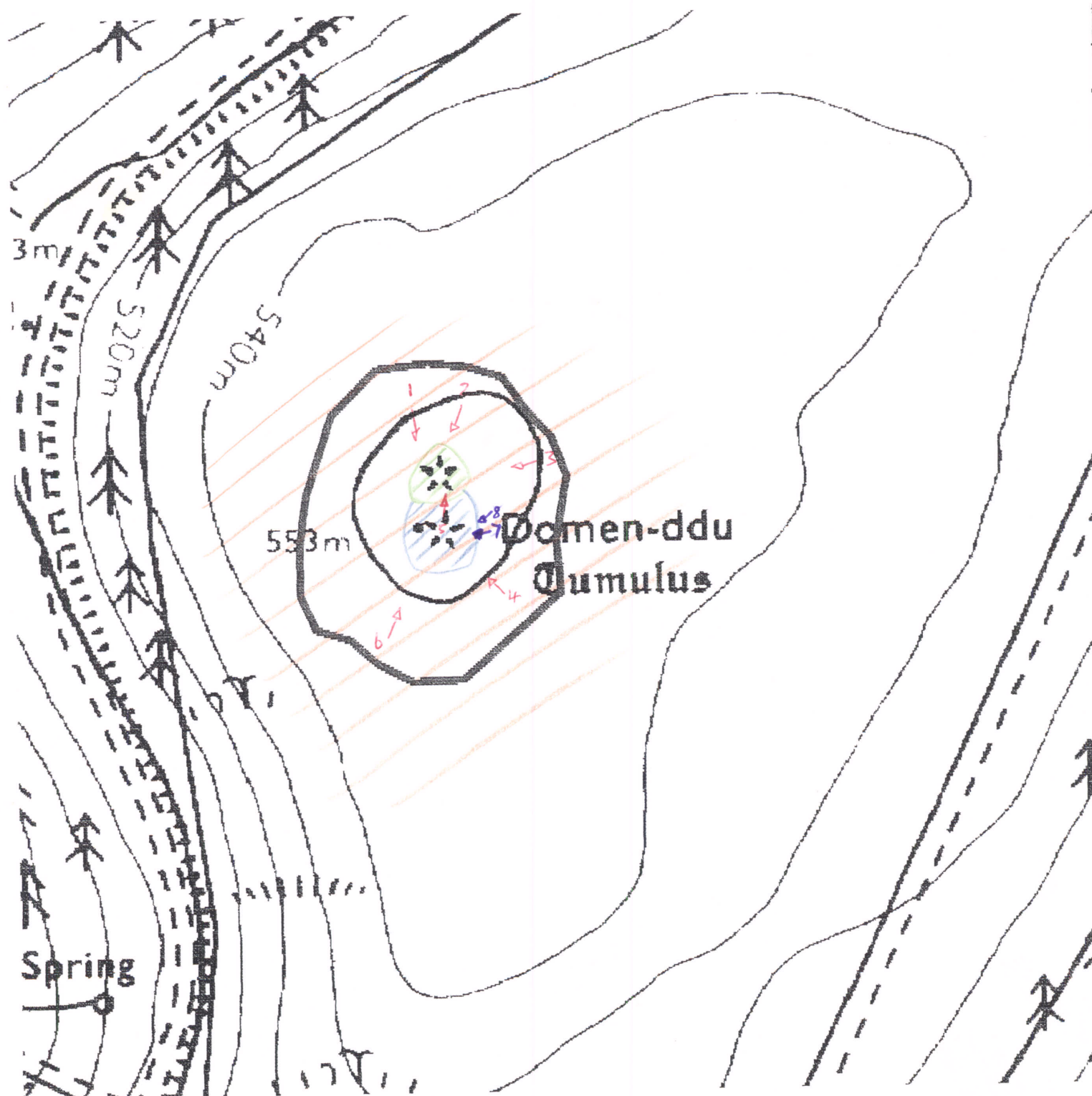
POTENTIALLY THREATENING FACTORS			
AGENT	PRESENT	ACTION	SIGNIFICANCE
ANIMALS	Y N	Burrowing - badgers, foxes, rabbits	Damage/disturbance to underground artefacts
	Y N	Overgrazing - cattle, horses, sheep	Loss of vegetation cover/soil
	Y N	Poaching - cattle, horses, sheep	Damage to vegetation cover, leading to erosion
	Y N	Rubbing point/erosion focus point - cattle, horses, sheep	As above, plus possible damage to upstanding features
HUMAN	Y N	Demolition or removal of monument	Active removal of artefacts/monument
	Y N	Rubbish dumping	Infilling/contamination
	Y N	Trampling/poaching - on footpaths/desire lines	Loss of vegetation cover/soil damage resulting in erosion
	Y N	Mountain bikes/Motorcross etc	As above
	Y N	Deep ploughing/Drainage works/Building	Damage/disturbance of artefacts
	Y N	Shallow cultivation/reseeds	As above
	Y N	Tree/Scrub removal by uprooting	As above
	Y N	Scrub burning in bonfires	Intense heat at point source, damage to artefacts and alteration of soil profile
VEGETATION	Y N	Root damage - trees and scrub (especially where deep rooted - heavy crowns)	Damage/disturbance of artefacts
	Y N	Tree windthrow	Potential massive damage/disturbance
	Y N	Scrub encroachment - bracken, gorse, rhodedendron, thorn	Root or rhizome damage/disturbance (bracken least significant)
WEATHER/SITE FACTORS	Y N	High rainfall/windspeeds - exposure	Greater erosion risk than level, non exposed site
	Y N	High gradient	

-  mosaic of NFV (c) with em_2 in wetter areas.
-  VNF
-  FNV

959

Radnor ESA

SO0169 7826



AG

592

RADNOR ESA HISTORIC MONITORING RESURVEY 2000

OS 1:10,000 SHEET: SO/SN	GRID REF: SO/SN 0169 7826
PRN: 959	SITE NAME:
AIR PHOTO No:	LANDSCAPE TYPE:
No. GROUND PHOTOS: 8	
DATE RESURVEYED: 20/6/00.	RESURVEYED BY: GAT.

IF CHANGES TO ANY OF THE FOLLOWING HAVE OCCURRED SINCE THE BASELINE, DETAIL THESE CHANGES IN THE APPROPRIATE SECTION OF THE RESURVEY PROFORMA.

A: CHANGES TO ACCESS

B: CHANGES TO LAND COVER

C: CHANGES TO LAND MANAGEMENT

D: CHANGES IN DESCRIPTION/CONDITION OF MONUMENT

E: CHANGES IN POTENTIALLY THREATENING FACTORS

F: CHANGE IN RATE OF DECAY

NO ✓	YES
NO ✓	YES
NO ✓	YES
NO	YES ✓
NO WAT	YES ✓
NO	YES

A: ACCESS

B: LANDCOVER

SITE:

HALO:

C: LAND MANAGEMENT

SITE:

HALO:

D: DESCRIPTION/CONDITION OF MONUMENT

Scrape on side of mound more pronounced. Stone hill visible and has been used to build cairn on top of mound.

Stone cairn now slightly taller than 1996.

Ownership unchanged.

E: POTENTIALLY THREATENING FACTORS (see table at back of proforma)

Removal of exposed shore to build cañon is allowing further damage by livestock. ~~by~~. Scrape needs to be filled in if possible rather than enlarged!
See photos 7/8.

F: RATE OF DECAY:

STABLE

SLOW ✓

RAPID

CONTINUED?

YES

NO ✓

POTENTIALLY THREATENING FACTORS			
AGENT	PRESENT		SIGNIFICANCE
ANIMALS	Y	N	Burrowing – badgers, foxes, rabbits
	Y	N	Overgrazing – cattle, horses, sheep
	Y	N	Poaching – cattle, horses, sheep
	Y	N	Rubbing point/erosion focus point – cattle, horses, sheep
HUMAN	Y	N	Demolition or removal of monument
	Y	N	Rubbish dumping
	Y	N	Trampling/poaching – on footpaths/desire lines
	Y	N	Mountain bikes/Motorcross etc
	Y	N	Deep ploughing/Drainage works/Building
	Y	N	Shallow cultivation/reseeds
	Y	N	Tree/Scrub removal by uprooting
	Y	N	Scrub burning
VEGETATION	Y	N	Root damage – trees and scrub (especially where deep rooted – heavy crowns)
	Y	N	Tree windthrow
	Y	N	Scrub encroachment – bracken, gorse, rhododendron, thorn
WEATHER/SITE FACTORS	Y	N	High rainfall/windspeeds – exposure
	Y	N	High gradient