

## PRESELI ESA, HISTORIC MONITORING

BASELINE 1994

A

OS 1:10000 SHEET: SM/SN 13 NW	GRID REF: SM/SN 1141 3859
PRN: 4986 SITE NAME: PARC Y GARN	
AIR PHOTO No 59/92/130 No GROUND PHOTOS: 6	LANDSCAPE TYPE: E
DATE SURVEYED: 1/12/94	SURVEYED BY: GA HUPWOOD
ACCESS: Field owned by Glandwad fach. Grid ref: 113387.	

B

LAND COVER:
SITE: Improved grassland. One corner is very wet and marshy. Some light scrub + broadleaf trees.
HALO:

PRESELI ESA, HISTORIC MONITORING

BASELINE 1994

PRN: 4986.

C

LAND MANAGEMENT:

SITE: Appears well managed - used for grazing  
no livestock present when visited.

Continuous grass cover. Probably not  
HALO: intensively used.

D

DESCRIPTION/CONDITION OF MONUMENT:

Unsure of exact location, but surface irregularities  
visible at top of field. Ground appears to have  
been dug out to form a pronounced bank  
sloping down into a shallow bowl. (see diag  
overleaf). No obvious shape / pattern to feature.  
Some poaching from livestock in wetter areas.

E

POTENTIALLY THREATENING FACTORS: (see Table 1)

Poaching in wetter areas. Farmer mentioned that  
field had been drained 14 years ago, at  
which time a hedgerow was also removed.

CONTINUED? YES ☒ NO ☐



PRESELI ESA, HISTORIC MONITORING

BASELINE 1994

SUPPLEMENTARY NOTES TO FIELD SURVEYS PAGE ..... OF ..... PRN: 4986.

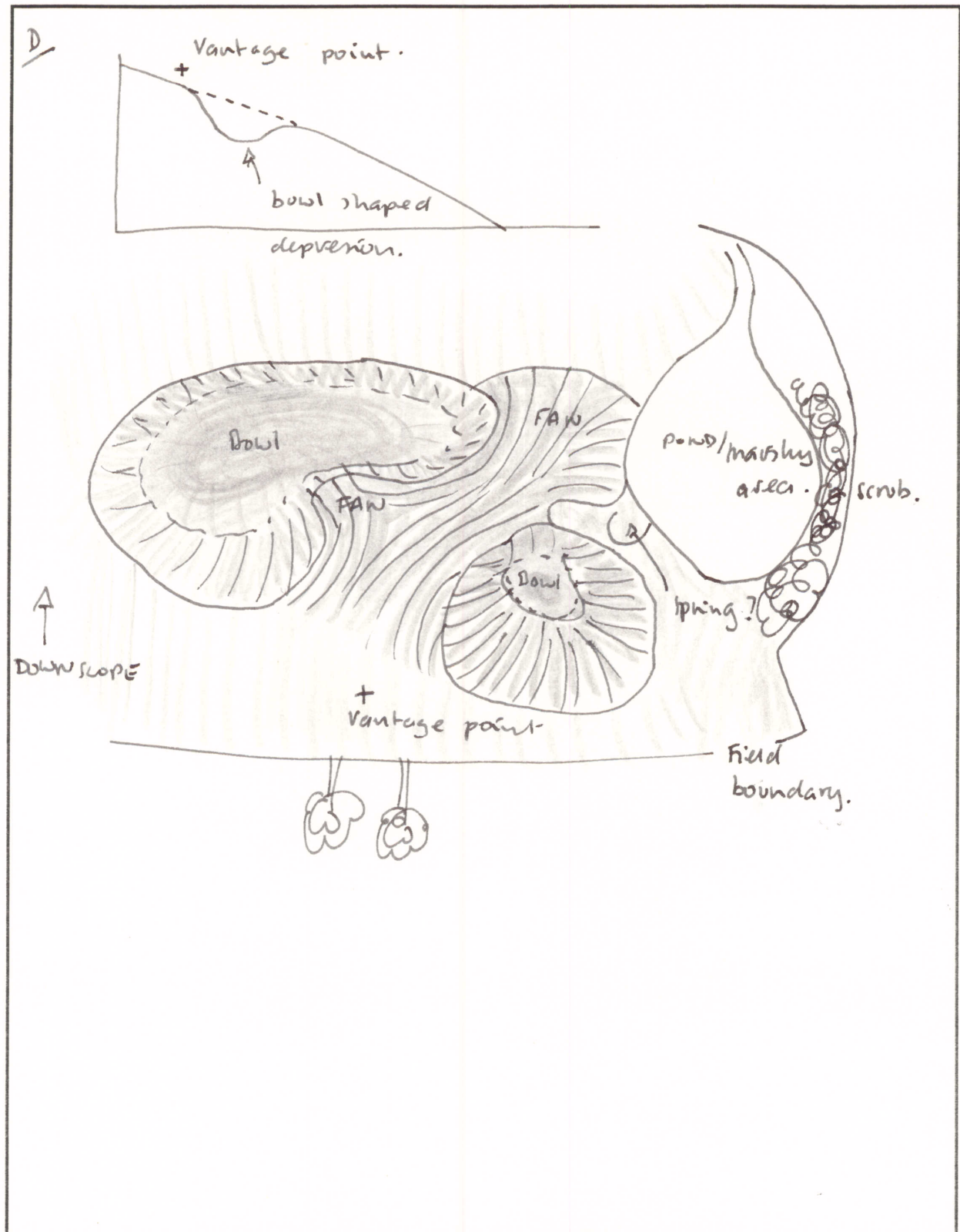


TABLE 1

PRESELI ESA, HISTORIC MONITORING, BASELINE 1994

PRN: 4986

POTENTIALLY THREATENING FACTORS			
AGENT	PRESENT?	ACTION	SIGNIFICANCE
ANIMALS	<input type="checkbox"/>	■ Burrowing - badgers, foxes, rabbits	■ damage/disturbance to underground artefacts
	<input type="checkbox"/>	■ Overgrazing - cattle, horses, sheep	■ loss of vegetation cover/soil damage, leading to erosion
	<input type="checkbox"/>	■ Poaching - cattle, horses, sheep	■ as above, possible damage to upstanding feature
	<input type="checkbox"/>	■ Rubbing point/erosion focus point - cattle, horses, sheep	
HUMAN	<input type="checkbox"/>	■ Demolition or removal of monument	■ active removal of artefacts/monument
	<input type="checkbox"/>	■ Rubbish Dumping	■ infilling/contamination
	<input type="checkbox"/>	■ Trampling/poaching - on footpaths/desire lines	■ loss of vegetation cover/soil damage leading to erosion
	<input type="checkbox"/>	■ Mountain Bikes/Motorcross etc	■ as above
	<input type="checkbox"/>	■ Deep Ploughing/Drainage Works/Building	■ damage/disturbance of artefacts
	<input type="checkbox"/>	■ Shallow cultivation/Reseeds	■ as above
	<input type="checkbox"/>	■ Tree/Scrub removal by uprooting	■ as above
	<input type="checkbox"/>	■ Scrub Burning in Bonfires	■ intense heat at point source, damage to artefacts and
VEGETATION	<input type="checkbox"/>	■ Root damage - trees and scrub (especially where deep rooted (heavy crowns)	■ damage/disturbance of artefacts
	<input type="checkbox"/>	■ Tree Windthrow	■ potential massive damage/disturbance
	<input type="checkbox"/>	■ Scrub Encroachment - bracken, gorse, rhododendron, thorn	■ root or rhizome damage/disturbance (bracken least significant)
WEATHER/SITE FACTORS	<input type="checkbox"/>	■ High rainfall/windspeeds - exposure	■ greater erosion risk than level, non exposed site
	<input type="checkbox"/>	■ High Gradient	



4986

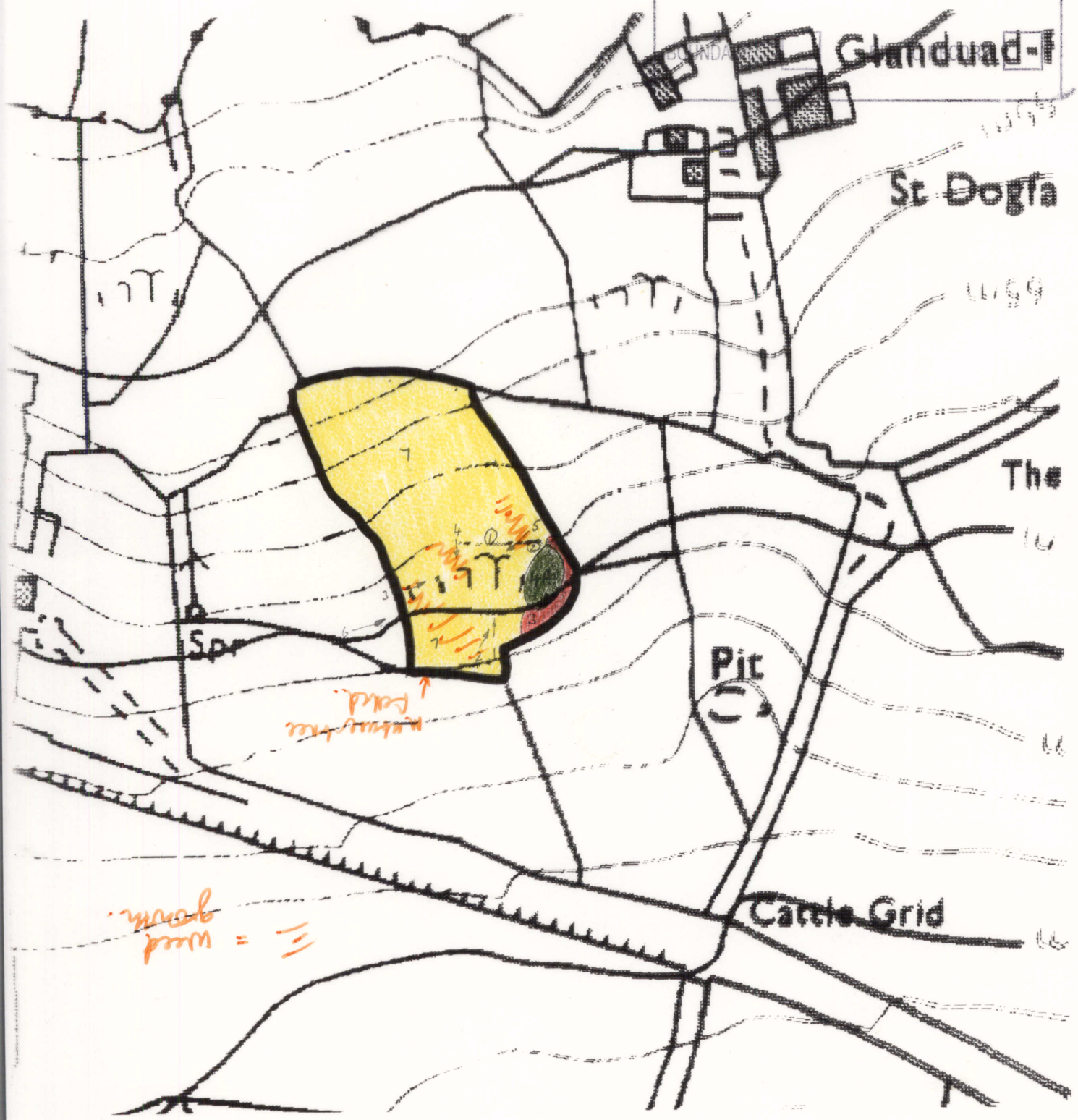
Preseli

SM1141 3859

SQUARE No. ☐

OWNERSHIPS ☐

LAND COVER ☐



## PRESELI ESA HISTORIC MONITORING RESURVEY 1997/98

A

OS 1:10,000 SHEET: SO/SH/SN 13 NW		GRID REF: SO/SH/SN 1141 3859	
PRN: 4986 SITE NAME: PARC Y GARN			
AIR PHOTO No: 59/92/130		LANDSCAPE TYPE: E	
No GROUND PHOTOS: 6			
DATE RESURVEYED: 22/8/97		RESURVEYED BY: C. Bosley	

IF CHANGES TO ANY OF THE FOLLOWING HAVE OCCURRED SINCE THE BASELINE, DETAIL THESE CHANGES IN THE APPROPRIATE SECTION OF THE RESURVEY PROFORMA.

A: CHANGES TO ACCESS?

B: CHANGES TO LANDCOVER

C: CHANGES TO LAND MANAGEMENT

D: CHANGES IN DESCRIPTION/CONDITION OF MONUMENT

E: CHANGES IN POTENTIALLY THREATENING FACTORS

F: CHANGE IN RATE OF DECAY

NO ✓	YES
NO ✓	YES ✓
NO ✓	YES
NO ✓	YES ✓
NO	YES
NO	YES

## A: ACCESS

Owned by Mr. Alan Rogers tel 01239 891600  
 land on which feature  
 occurs - rented to Mr. Ioi Williams tel 01239  
 891452

NOTE MR. I. Williams ALSO MENTIONED HE HAD BEEN  
 CONTACTED REGARDING A LINEAR FEATURE SAMPLE SQUARE  
 SURVEY.

## B:LANDCOVER

SITE: v. weedy in places - see map  
+ photos otherwise no change.

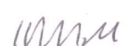

HALO:

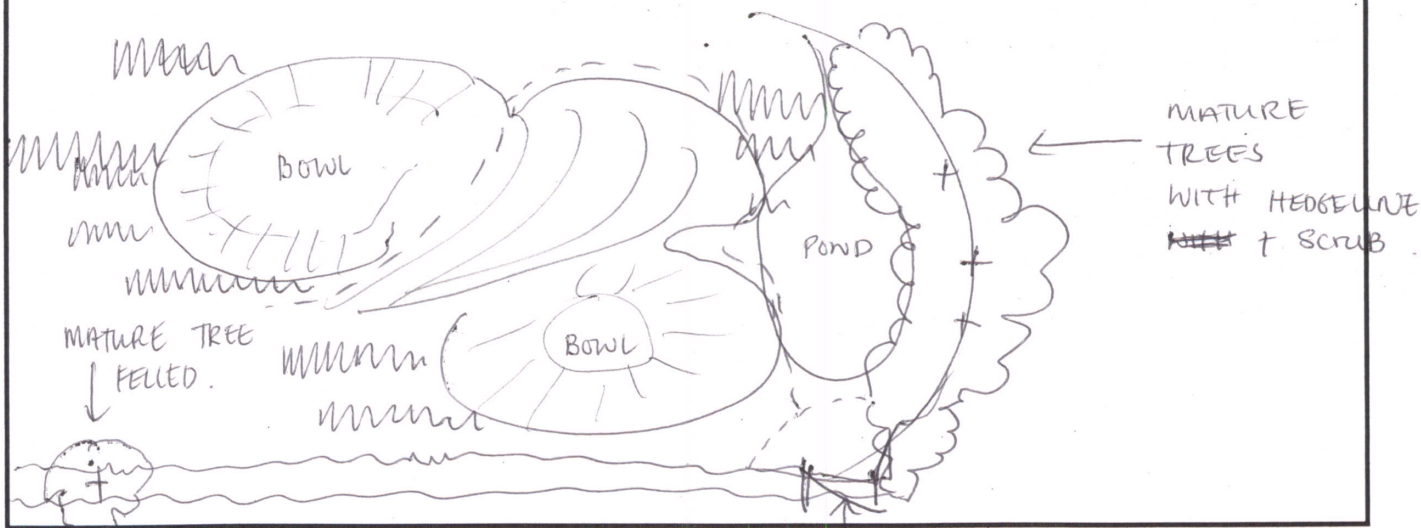
## C:LAND MANAGEMENT




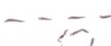
SITE:

HALO:

## D:DESCRIPTION/CONDITION OF MONUMENT

Now weeds and small areas of  
poaching were identified particularly  
in wetter areas. (see map    
for these areas →)



KEY -  - WEEDS  
 - HEDGE LINE  
 - TREES  
 - AREAS OF POACHING + EROSION.

GATE.



E: POTENTIALLY THREATENING FACTORS (see table 1)

NO change.

further poaching by cattle may cause damage in time though ~~at~~ there has been little change - with most of the damage from cattle occurring around the water areas / gates + along hedgebanks.

F

RATE OF DECAY:

STABLE

SLOW

RAPID

CONTINUED?

YES

NO

POTENTIALLY THREATENING FACTORS				
AGENT	PRESENT		ACTION	SIGNIFICANCE
ANIMALS  <i>along banks</i>	Y	N	Burrowing - badgers, foxes, rabbits	Damage/disturbance to underground artefacts
	Y	N	Overgrazing - cattle, horses, sheep	Loss of vegetation cover/soil
	Y	N	Poaching - cattle, horses, sheep	Damage to vegetation cover, leading to erosion
	Y	N	Rubbing point/erosion focus point - cattle, horses, sheep	As above, plus possible damage to upstanding features
HUMAN	Y	N	Demolition or removal of monument	Active removal of artefacts/monument
	Y	N	Rubbish dumping	Infilling/contamination
	Y	N	Trampling/poaching - on footpaths/desire lines	Loss of vegetation cover/soil damage resulting in erosion
	Y	N	Mountain bikes/Motorcross etc	As above
	Y	N	Deep ploughing/Drainage works/Building	Damage/disturbance of artefacts
	Y	N	Shallow cultivation/reseeds	As above
	Y	N	Tree/Scrub removal by uprooting	As above
	Y	N	Scrub burning in bonfires	Intense heat at point source, damage to artefacts and alteration of soil profile
VEGETATION	Y	N	Root damage - trees and scrub (especially where deep rooted - heavy crowns)	Damage/disturbance of artefacts
	Y	N	Tree windthrow	Potential massive damage/disturbance
	Y	N	Scrub encroachment - bracken, gorse, rhodedendron, thorn	Root or rhizome damage/disturbance (bracken least significant)
WEATHER/SITE FACTORS	Y	N	High rainfall/windspeeds - exposure	Greater erosion risk than level, non exposed site
	Y	N	High gradient	