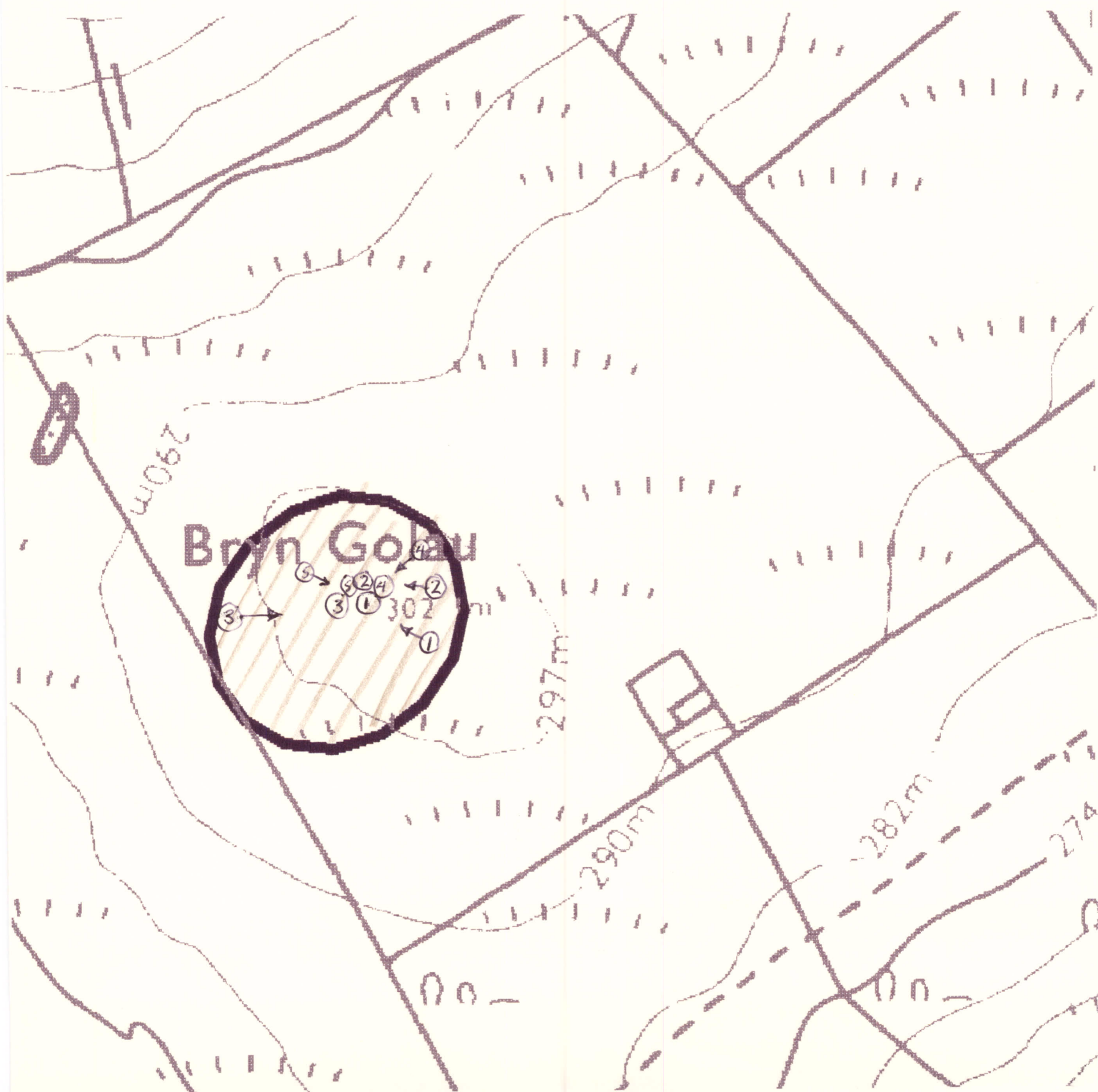


102274

Clwydian Range

SJ 1430 6950



## CLWYDIAN ESA, HISTORIC MONITORING

BASELINE 1994

A

OS 1:10000 SHEET: SJ 16 NW	GRID REF: SJ 143 695
PRN: 102274/S.	SITE NAME: Bryn Golan 4
AIR PHOTO No 148	LANDSCAPE TYPE:
No GROUND PHOTOS: 5	Clwydian Range
DATE SURVEYED: 16/2/95	SURVEYED BY: Dy Hens.
ACCESS: Best approached from Maes y. Esgob, Afon Wen SJ 140 698 Mr GT Jones (who was v. interested in the site)	

B

LAND COVER:
SITE: Upland sheep grazing
HALO: As above

Checked r OK RJ 31/3/95.

CLWYDIAN ESA, HISTORIC MONITORING

BASELINE 1994

PRN:

C

LAND MANAGEMENT:

SITE: Typical upland sheep pasture - well managed. Thin soils over the site

HALO: as site

D

DESCRIPTION/CONDITION OF MONUMENT:

A broad mound on the highest point with fine views in all directions. A single stone lies close to the summit. It is completely grass covered apart from some erosion in the SW of the summit see photo 2

E

POTENTIALLY THREATENING FACTORS: (see Table 1)

Some erosion caused by animals see photo 2 which being at an exposed site could deteriorate further unless it grasses over. No other risks.

CONTINUED? YES ☐ NO ☒

**CLWYDIAN RANGE ESA, HISTORIC MONITORING**

**BASELINE 1994**

**SUPPLEMENTARY NOTES TO FIELD SURVEYS    PAGE ..... OF .....    PRN:**

A large, empty rectangular box with a thin black border, occupying the majority of the page below the header. It is intended for supplementary notes to field surveys.



TABLE 1

CLWYDIAN RANGE ESA, HISTORIC MONITORING, BASELINE 1994

PRN:

POTENTIALLY THREATENING FACTORS			
AGENT	PRESENT?	ACTION	SIGNIFICANCE
ANIMALS	<input type="checkbox"/>	■ Burrowing - badgers, foxes, rabbits	■ damage/disturbance to underground artefacts
	<input type="checkbox"/>	■ Overgrazing - cattle, horses, sheep	■ loss of vegetation cover/soil damage, leading to erosion
	<input type="checkbox"/>	■ Poaching - cattle, horses, sheep	■ as above, possible damage to upstanding feature
	<input checked="" type="checkbox"/>	■ Rubbing point/erosion focus point - cattle, horses, sheep	
HUMAN	<input type="checkbox"/>	■ Demolition or removal of monument	■ active removal of artefacts/monument
	<input type="checkbox"/>	■ Rubbish Dumping	■ infilling/contamination
	<input type="checkbox"/>	■ Trampling/poaching - on footpaths/desire lines	■ loss of vegetation cover/soil damage leading to erosion
	<input type="checkbox"/>	■ Mountain Bikes/Motorcross etc	■ as above
	<input type="checkbox"/>	■ Deep Ploughing/Drainage Works/Building	■ damage/disturbance of artefacts
	<input type="checkbox"/>	■ Shallow cultivation/Reseeds	■ as above
	<input type="checkbox"/>	■ Tree/Scrub removal by uprooting	■ as above
	<input type="checkbox"/>	■ Scrub Burning in Bonfires	■ intense heat at point source, damage to artefacts and alteration of soil profile
VEGETATION	<input type="checkbox"/>	■ Root damage - trees and scrub (especially where deep rooted (heavy crowns)	■ damage/disturbance of artefacts
	<input type="checkbox"/>	■ Tree Windthrow	■ potential massive damage/disturbance
	<input type="checkbox"/>	■ Scrub Encroachment - bracken, gorse, rhodedendron, thorn	■ root or rhizome damage/disturbance (bracken least significant)
WEATHER/SITE FACTORS	<input checked="" type="checkbox"/>	■ High rainfall/windspeeds - exposure	■ greater erosion risk than level, non exposed site
	<input type="checkbox"/>	■ High Gradient	

# CLWYDIAN RANGE ESA HISTORIC MONITORING RESURVEY 1997/98

A

OS 1:10,000 SHEET: SO/SH/SN <i>16 NW</i>		GRID REF: SO/SH/SN <i>143695</i>	
PRN: <i>102274/5</i>		SITE NAME: <i>Bryn Golau</i>	
AIR PHOTO No: <i>148</i>		LANDSCAPE TYPE:  <i>Clwydian Range</i>	
No GROUND PHOTOS: <del>2</del> <i>3</i>			
DATE RESURVEYED: <i>13/8/97</i>		RESURVEYED BY: <i>Dg Peters</i>	

IF CHANGES TO ANY OF THE FOLLOWING HAVE OCCURRED SINCE THE BASELINE, DETAIL THESE CHANGES IN THE APPROPRIATE SECTION OF THE RESURVEY PROFORMA.

A: CHANGES TO ACCESS? - *see note below*

B: CHANGES TO LANDCOVER

C: CHANGES TO LAND MANAGEMENT

D: CHANGES IN DESCRIPTION/CONDITION OF MONUMENT

E: CHANGES IN POTENTIALLY THREATENING FACTORS - *see comment in section*

F: CHANGE IN RATE OF DECAY

NO <input checked="" type="checkbox"/>	YES
NO <input checked="" type="checkbox"/>	YES
NO <input checked="" type="checkbox"/>	YES
NO <input checked="" type="checkbox"/>	YES
NO <input checked="" type="checkbox"/>	YES
NO <input checked="" type="checkbox"/>	YES

## A: ACCESS

At the time of the re-survey, Mr Jones, Maes y- Esgeob could not be contacted. An alternative approach was taken from the public footpath which runs just below the site (SW) shown clearly on OS map

Base photos 1 and 2 were re-taken and an overview photo of site.

B:LANDCOVER

SITE:

HALO:

C:LAND MANAGEMENT

SITE:

HALO:

D:DESCRIPTION/CONDITION OF MONUMENT

E: POTENTIALLY THREATENING FACTORS (see table 1)

The small area of corrosion shown in base photo 2 has not deteriorated further. A repeat photo was taken.

F

RATE OF DECAY:

STABLE

SLOW

RAPID

CONTINUED?

YES

NO



POTENTIALLY THREATENING FACTORS				
AGENT	PRESENT		ACTION	SIGNIFICANCE
ANIMALS	Y	N	Burrowing - badgers, foxes, rabbits	Damage/disturbance to underground artefacts
	Y	N	Overgrazing - cattle, horses, sheep	Loss of vegetation cover/soil
	Y	N	Poaching - cattle, horses, sheep	Damage to vegetation cover, leading to erosion
	Y	N	Rubbing point/erosion focus point - cattle, horses, sheep	As above, plus possible damage to upstanding features
HUMAN	Y	N	Demolition or removal of monument	Active removal of artefacts/monument
	Y	N	Rubbish dumping	Infilling/contamination
	Y	N	Tramplng/poaching - on footpaths/desire lines	Loss of vegetation cover/soil damage resulting in erosion
	Y	N	Mountain bikes/Motorcross etc	As above
	Y	N	Deep ploughing/Drainage works/Building	Damage/disturbance of artefacts
	Y	N	Shallow cultivation/reseeds	As above
	Y	N	Tree/Scrub removal by uprooting	As above
	Y	N	Scrub burning in bonfires	Intense heat at point source, damage to artefacts and alteration of soil profile
VEGETATION	Y	N	Root damage - trees and scrub (especially where deep rooted - heavy crowns)	Damage/disturbance of artefacts
	Y	N	Tree windthrow	Potential massive damage/disturbance
	Y	N	Scrub encroachment - bracken, gorse, rhodedendron, thorn	Root or rhizome damage/disturbance (bracken least significant)
WEATHER/SITE FACTORS	Y	N	High rainfall/windspeeds - exposure	Greater erosion risk than level, non exposed site
	Y	N	High gradient	