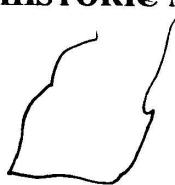


Povys.

CAMBRIAN MOUNTAINS ESA, HISTORIC MONITORING

BASELINE 1995

A



OS 1:10000 SHEET: SO/SH /SN 89	GRID REF: SO/SH /SN 8864 9166
PRN: 7093 SITE NAME: Staylittle South Enclosure	
AIR PHOTO No 649-111	LANDSCAPE TYPE: Ic
No GROUND PHOTOS: 7	
DATE SURVEYED: 30/10/95	SURVEYED BY: G. HOPWOOD
ACCESS: Mr. E. W Jones, Esgair Goch, Staylittle. Tel. 01686 430293. Farm at Grid ref. SN 888 925.	

B

LAND COVER:
SITE: Improved grassland with Juncus and Nettles growing over part of site.
HALO: Improved grassland with wetter semi- improved Juncus dominated land on margins.

CAMBRIAN MOUNTAINS ESA, HISTORIC MONITORING

BASELINE 1995

PRN 7093

C

LAND MANAGEMENT:

SITE: Used for grazing. Appears well managed - no overgrazing / poaching etc. Juncus and nettles on part of feature.

HALO: As above, with nettle areas around drains dominated by Juncus. No evidence of topping to control Juncus.

D

DESCRIPTION/CONDITION OF MONUMENT:

Bowl shaped depression scooped out of gently sloping hillside. Central flat rectangular area some 10m x 4m forming a platform. Stones visible amongst Juncus / nettles in this area. Low bank surrounds $\frac{1}{2}$ to $\frac{2}{3}$ of platform built up-slope just below crest of hillside. Not very obvious with a maximum height of

E

POTENTIALLY THREATENING FACTORS: (see Table 1)

No obvious threats at present. Site does not appear to be deteriorating to any extent.

F

RATE OF DECAY:

STABLE

SLOW

RAPID

CONTINUED?

YES

NO

CAMBRIAN MOUNTAINS ESA, HISTORIC MONITORING

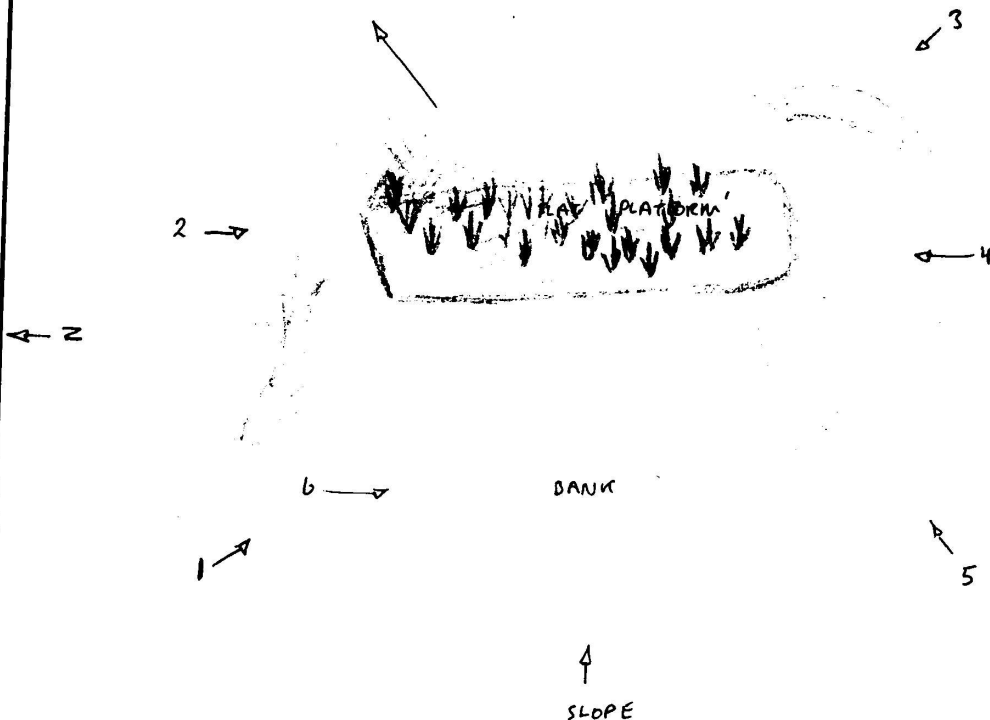
BASELINE 1995

SUPPLEMENTARY NOTES TO FIELD SURVEYS

PAGE...! OF...! PRN: 7093

D/ perhaps 40 cm. whole like some 25-30 m across with a roughly oval shape. Continuous vegetation cover and in good condition.

Enclosure open to NE
overlooking river + valley



Bank 1 → 1.5 m wide and most obvious in photo 3.
Photo 7 taken from B4518 road looking SW across
river at Grid Ref SN 888 918.

TABLE 1

CAMBRIAN MOUNTAINS ESA, HISTORIC MONITORING, BASELINE 1995

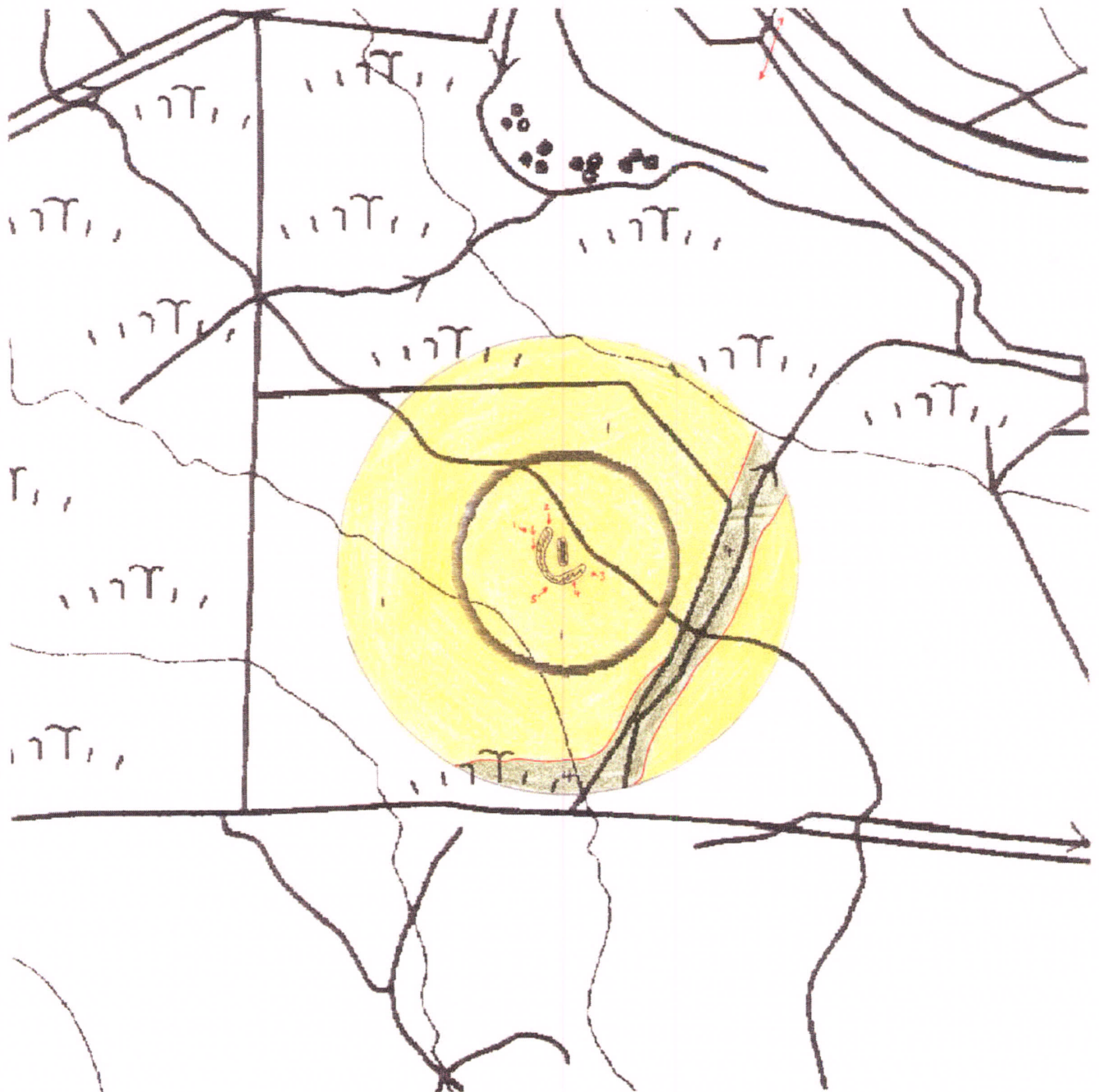
PRN 7093

POTENTIALLY THREATENING FACTORS			
AGENT	PRESENT		ACTION
ANIMALS	Y	N	Burrowing - badgers, foxes, rabbits
	Y	N	Overgrazing - cattle, horses, sheep
	Y	N	Poaching - cattle, horses, sheep
	Y	N	Rubbing point/erosion focus point - cattle, horses, sheep
HUMAN	Y	N	Demolition or removal of monument
	Y	N	Rubbish dumping
	Y	N	Trampling/poaching - on footpaths/desire lines
	Y	N	Mountain bikes/Motorcross etc
	Y	N	Deep ploughing/Drainage works/Building
	Y	N	Shallow cultivation/reseeds
	Y	N	Tree/Scrub removal by uprooting
	Y	N	Scrub burning in bonfires
VEGETATION	Y	N	Root damage - trees and scrub (especially where deep rooted - heavy crowns)
	Y	N	Tree windthrow
	Y	N	Scrub encroachment - bracken, gorse, rhodedendron, thorn
WEATHER/SITE FACTORS	Y	N	High rainfall/windspeeds - exposure
	Y	N	High gradient

7093

Cambrian Mountains ESA

8864 9166



CAMBRIAN MOUNTAINS ESA HISTORIC MONITORING RESURVEY 1999

A

OS 1:10,000 SHEET: SN/ SO /SH 89		GRID REF: SN/ SO /SH 8864 9166	
PRN: 7093 SITE NAME: Staylittle South Enclosure			
AIR PHOTO No: 649-111		LANDSCAPE TYPE: I c	
No GROUND PHOTOS: 7			
DATE RESURVEYED: 14/6/99		RESURVEYED BY: W. Somerfield	

IF CHANGES TO ANY OF THE FOLLOWING HAVE OCCURRED SINCE THE BASELINE, DETAIL THESE CHANGES IN THE APPROPRIATE SECTION OF THE RESURVEY PROFORMA.

A:CHANGES TO ACCESS?

B:CHANGES TO LANDCOVER

C:CHANGES TO LAND MANAGEMENT

D:CHANGES IN DESCRIPTION/CONDITION OF MONUMENT

E:CHANGES IN POTENTIALLY THREATENING FACTORS

F:CHANGE IN RATE OF DECAY

NO <input checked="" type="checkbox"/>	YES
NO <input checked="" type="checkbox"/>	YES
NO <input checked="" type="checkbox"/>	YES
NO <input checked="" type="checkbox"/>	YES
NO <input checked="" type="checkbox"/>	YES
NO <input checked="" type="checkbox"/>	YES

A: ACCESS

checked + Qc'd

G. Atwood 15/6/99

CAMBRIAN MOUNTAINS ESA HISTORIC MONITORING RESURVEY 1999

PRN

B:LANDCOVER

SITE:

HALO:

C:LAND MANAGEMENT

SITE:

HALO:

D:DESCRIPTION/CONDITION OF MONUMENT

E: POTENTIALLY THREATENING FACTORS (see table 1)

F

RATE OF DECAY:

STABLE

SLOW

RAPID

CONTINUED?

YES

NO

CAMBRIAN MOUNTAINS ESA, HISTORIC MONITORING RESURVEY 1999

SUPPLEMENTARY NOTES TO FIELD SURVEYS

PAGE..... OF.... PRN:

POTENTIALLY THREATENING FACTORS			
AGENT	PRESENT		ACTION
ANIMALS	Y	N	Burrowing - badgers, foxes, rabbits
	Y	N	Overgrazing - cattle, horses, sheep
	Y	N	Poaching - cattle, horses, sheep
	Y	N	Rubbing point/erosion focus point - cattle, horses, sheep
HUMAN			Damage/disturbance to underground artefacts
			Loss of vegetation cover/soil
			Damage to vegetation cover, leading to erosion
			As above, plus possible damage to upstanding features
	Y	N	Demolition or removal of monument
	Y	N	Rubbish dumping
	Y	N	Trampling/poaching - on footpaths/desire lines
	Y	N	Mountain bikes/Motorcross etc
VEGETATION	Y	N	Deep ploughing/Drainage works/Building
	Y	N	Shallow cultivation/reseeds
	Y	N	Tree/Scrub removal by uprooting
	Y	N	Scrub burning in bonfires
			Active removal of artefacts/monument
WEATHER/SITE FACTORS	Y	N	Infilling/contamination
	Y	N	Loss of vegetation cover/soil damage resulting in erosion
	Y	N	As above
VEGETATION	Y	N	Damage/disturbance of artefacts
	Y	N	As above
	Y	N	As above
VEGETATION	Y	N	Intense heat at point source, damage to artefacts and alteration of soil profile
	Y	N	Damage/disturbance of artefacts
	Y	N	Potential massive damage/disturbance
WEATHER/SITE FACTORS	Y	N	Root or rhizome damage/disturbance (bracken least significant)
	Y	N	Greater erosion risk than level, non exposed site