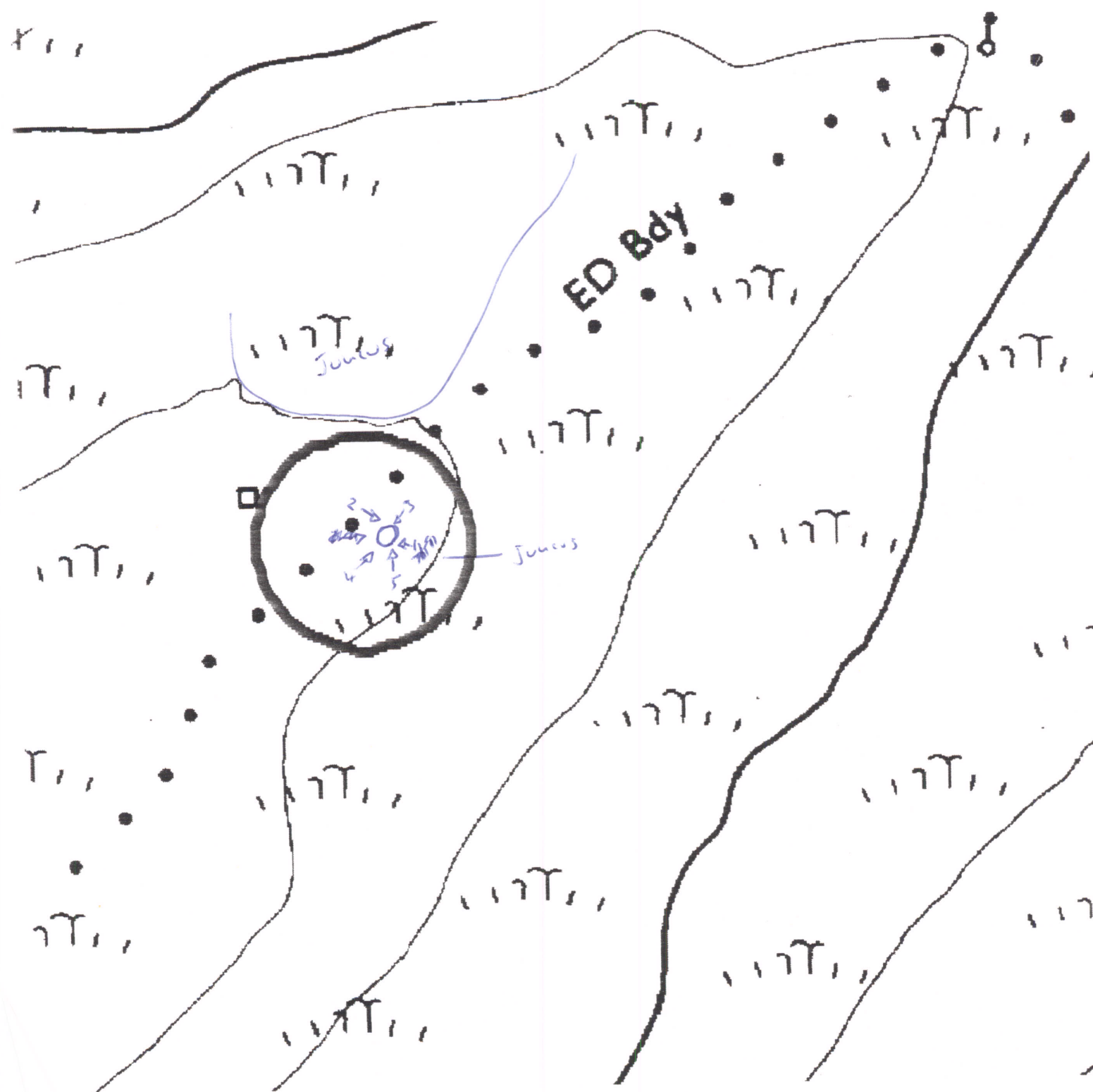


5487

Cambrian Mountains ESA

SN 975 607



CAMBRIAN MOUNTAINS ESA, HISTORIC MONITORING

BASELINE 1995

A

OS 1:10000 SHEET: SO/SH/SN	GRID REF: SO/SH/SN
PRN: 5487 SITE NAME:	
AIR PHOTO No	LANDSCAPE TYPE:
No GROUND PHOTOS:	
DATE SURVEYED: 13/12	SURVEYED BY:
ACCESS:	

B

LAND COVER:
SITE: Grassy SURFS
HALO: Grassy SURFS.

CAMBRIAN MOUNTAINS ESA, HISTORIC MONITORING

BASELINE 1995

PRN

C

LAND MANAGEMENT:

SITE: common forest - rough grazing. sheep.

HALO:

D

DESCRIPTION/CONDITION OF MONUMENT:

Pile of stones approx 1.5m wide x 0.5m high.
no near evidence of cairn - very damaged.
Dislodged stones around central pile - partly
buried sheep tracks run through + across site.
V. exposed to elements

E

POTENTIALLY THREATENING FACTORS: (see Table 1)

sheep nibbling / trampling. Elements

F

RATE OF DECAY:

STABLE

SLOW

RAPID

CONTINUED?

YES

NO

CAMBRIAN MOUNTAINS ESA, HISTORIC MONITORING

BASELINE 1995

SUPPLEMENTARY NOTES TO FIELD SURVEYS

PAGE..... OF..... PRN:

A large, empty rectangular box with a black border, occupying the majority of the page below the header information. It is intended for supplementary notes to field surveys.

TABLE 1

CAMBRIAN MOUNTAINS ESA, HISTORIC MONITORING, BASELINE 1995

PRN

POTENTIALLY THREATENING FACTORS				
AGENT	PRESENT		ACTION	SIGNIFICANCE
ANIMALS	Y	N	Burrowing - badgers, foxes, rabbits	Damage/disturbance to underground artefacts
	Y	N	Overgrazing - cattle, horses, sheep	Loss of vegetation cover/soil
	Y	N	Poaching - cattle, horses, sheep	Damage to vegetation cover, leading to erosion
	Y	N	Rubbing point/erosion focus point - cattle, horses, sheep	As above, plus possible damage to upstanding features
HUMAN	Y	N	Demolition or removal of monument	Active removal of artefacts/monument
	Y	N	Rubbish dumping	Infilling/contamination
	Y	N	Trampling/poaching - on footpaths/desire lines	Loss of vegetation cover/soil damage resulting in erosion
	Y	N	Mountain bikes/Motorcross etc	As above
	Y	N	Deep ploughing/Drainage works/Building	Damage/disturbance of artefacts
	Y	N	Shallow cultivation/reseeds	As above
	Y	N	Tree/Scrub removal by uprooting	As above
	Y	N	Scrub burning in bonfires	Intense heat at point source, damage to artefacts and alteration of soil profile
VEGETATION	Y	N	Root damage - trees and scrub (especially where deep rooted - heavy crowns)	Damage/disturbance of artefacts
	Y	N	Tree windthrow	Potential massive damage/disturbance
	Y	N	Scrub encroachment - bracken, gorse, rhododendron, thorn	Root or rhizome damage/disturbance (bracken least significant)
WEATHER/SITE FACTORS	Y	N	High rainfall/windspeeds - exposure	Greater erosion risk than level, non exposed site
	Y	N	High gradient	

CAMBRIAN MOUNTAINS ESA HISTORIC MONITORING RESURVEY 1999

A

OS 1:10,000 SHEET: SN/ SO /SH 96		GRID REF: SN/ SO /SH 975 607	
PRN: 5487 SITE NAME: DRUM DDU CAIRN			
AIR PHOTO No: 649-190		LANDSCAPE TYPE: Ib	
No GROUND PHOTOS: 5			
DATE RESURVEYED: 29-6-99		RESURVEYED BY: W. Somerfield	

IF CHANGES TO ANY OF THE FOLLOWING HAVE OCCURRED SINCE THE BASELINE, DETAIL THESE CHANGES IN THE APPROPRIATE SECTION OF THE RESURVEY PROFORMA.

A:CHANGES TO ACCESS?

B:CHANGES TO LANDCOVER

C:CHANGES TO LAND MANAGEMENT

D:CHANGES IN DESCRIPTION/CONDITION OF MONUMENT

E:CHANGES IN POTENTIALLY THREATENING FACTORS

F:CHANGE IN RATE OF DECAY

NO <input checked="" type="checkbox"/>	YES
NO <input checked="" type="checkbox"/>	YES
NO <input checked="" type="checkbox"/>	YES
NO <input checked="" type="checkbox"/>	YES
NO <input checked="" type="checkbox"/>	YES
NO <input checked="" type="checkbox"/>	YES

A: ACCESS

checked + qc'd

Autopused. 5/7/99

CAMBRIAN MOUNTAINS ESA HISTORIC MONITORING RESURVEY 1999

PRN

B:LANDCOVER

SITE:

HALO:

C:LAND MANAGEMENT

SITE:

HALO:

D:DESCRIPTION/CONDITION OF MONUMENT

E: POTENTIALLY THREATENING FACTORS (see table 1)

F

RATE OF DECAY:

STABLE

SLOW

RAPID

CONTINUED?

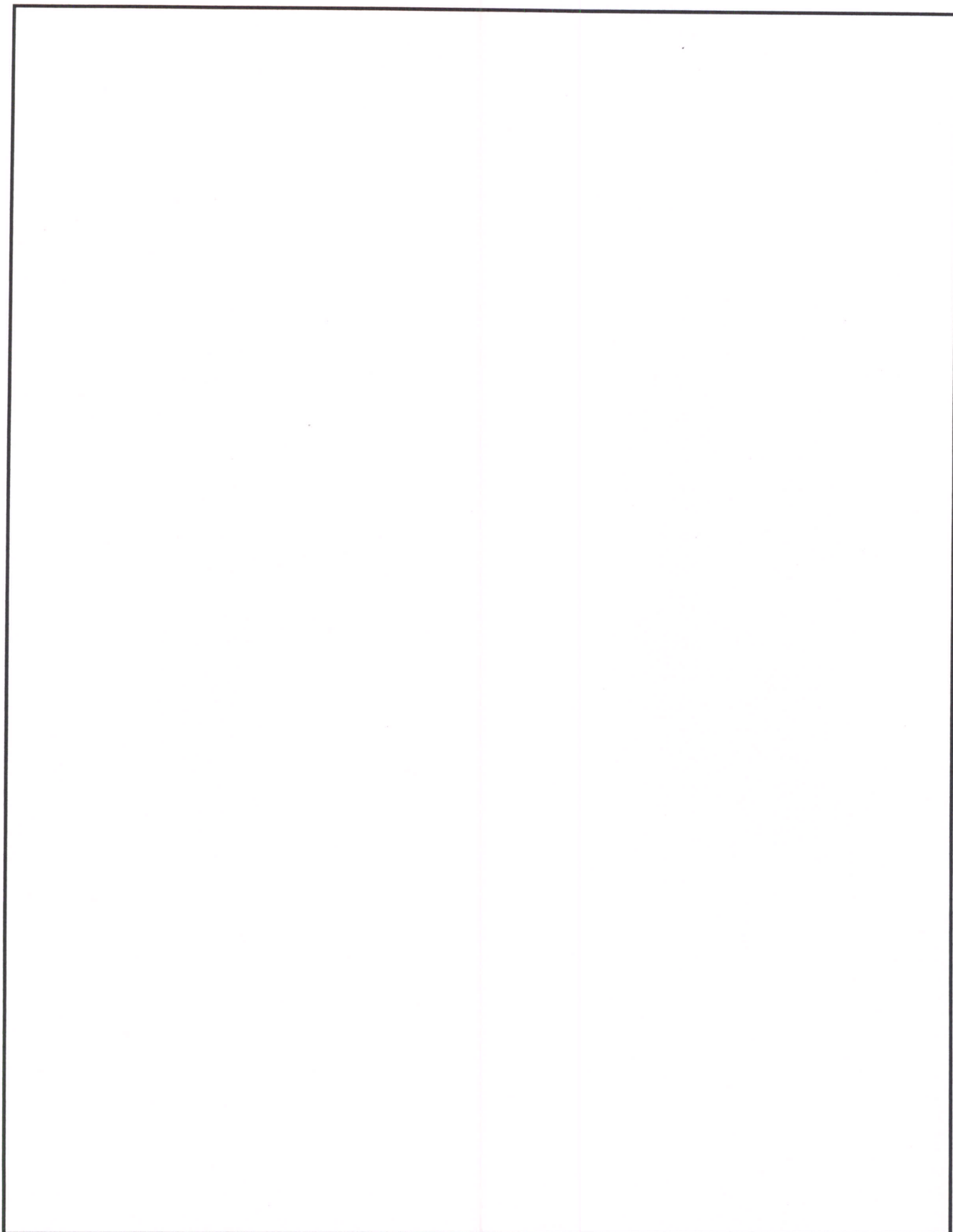
YES

NO

CAMBRIAN MOUNTAINS ESA, HISTORIC MONITORING RESURVEY 1999

SUPPLEMENTARY NOTES TO FIELD SURVEYS

PAGE..... OF.... PRN:

A large, empty rectangular box with a thin black border, occupying the majority of the page below the header information. It is likely a placeholder for a drawing, photograph, or other visual data related to the field surveys.

POTENTIALLY THREATENING FACTORS			
AGENT	PRESENT	ACTION	SIGNIFICANCE
ANIMALS	Y N	Burrowing - badgers, foxes, rabbits	Damage/disturbance to underground artefacts
	Y N	Overgrazing - cattle, horses, sheep	Loss of vegetation cover/soil
	Y N	Poaching - cattle, horses, sheep	Damage to vegetation cover, leading to erosion
	(Y) N	Rubbing point/erosion focus point - cattle, horses, sheep	As above, plus possible damage to upstanding features
HUMAN	Y N	Demolition or removal of monument	Active removal of artefacts/monument
	Y N	Rubbish dumping	Infilling/contamination
	Y N	Trampling/poaching - on footpaths/desire lines	Loss of vegetation cover/soil damage resulting in erosion
	Y N	Mountain bikes/Motorcross etc	As above
	Y N	Deep ploughing/Drainage works/Building	Damage/disturbance of artefacts
	Y N	Shallow cultivation/reseeds	As above
	Y N	Tree/Scrub removal by uprooting	As above
	Y N	Scrub burning in bonfires	Intense heat at point source, damage to artefacts and alteration of soil profile
VEGETATION	Y N	Root damage - trees and scrub (especially where deep rooted - heavy crowns)	Damage/disturbance of artefacts
	Y N	Tree windthrow	Potential massive damage/disturbance
	Y N	Scrub encroachment - bracken, gorse, rhodedendron, thorn	Root or rhizome damage/disturbance (bracken least significant)
WEATHER/SITE FACTORS	(Y) N	High rainfall/windspeeds - exposure	Greater erosion risk than level, non exposed site
	Y N	High gradient	