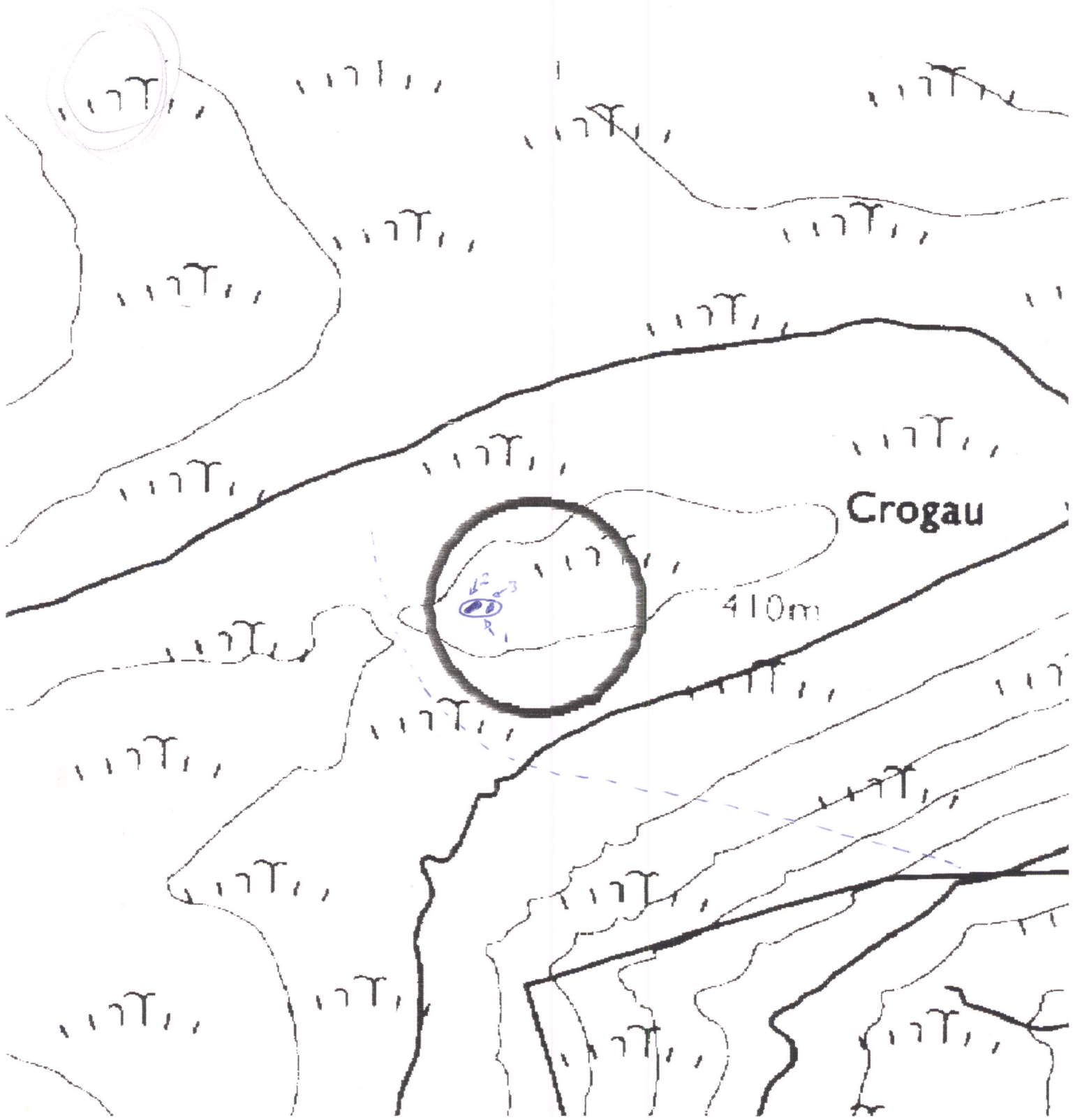


5455

Cambrian Mountains ESA

SN 967 584



# CAMBRIAN MOUNTAINS ESA. HISTORIC MONITORING

BASELINE 1995

A

OS 1:10000 SHEET: SO/SH/SN	GRID REF: SO/SH/SN
PRN: 5455 SITE NAME:	
AIR PHOTO No	LANDSCAPE TYPE:
No GROUND PHOTOS:	
DATE SURVEYED:	SURVEYED BY:
ACCESS:	

B

LAND COVER:
SITE: <i>Granny smrs.</i>
HALO:

**CAMBRIAN MOUNTAINS ESA. HISTORIC MONITORING**

**BASELINE 1995**

**PRN**

**C**

**LAND MANAGEMENT:**

**SITE:** Rough grazing. Common land?

**HALO:**

**D**

**DESCRIPTION/CONDITION OF MONUMENT:**

Unsure of actual location.

Numerous rock outcrops which have a cairn like appearance. One has at least 3 stones associated with it. This may represent feature. Stones are not continuous with bedrock, no cairn mound - stone or earth present.

**E**

**POTENTIALLY THREATENING FACTORS: (see Table 1)**

livestock - rubbing.

**F**

**RATE OF DECAY:**

**STABLE**

**SLOW**

**RAPID**

**CONTINUED?**

**YES**

**NO**

**CAMBRIAN MOUNTAINS ESA, HISTORIC MONITORING**

**BASELINE 1995**

**SUPPLEMENTARY NOTES TO FIELD SURVEYS**

**PAGE..... OF..... PRN:**

TABLE 1

## CAMBRIAN MOUNTAINS ESA, HISTORIC MONITORING, BASELINE 1995

PRN

POTENTIALLY THREATENING FACTORS				
AGENT	PRESENT		ACTION	SIGNIFICANCE
ANIMALS	Y	N	Burrowing - badgers, foxes, rabbits	Damage/disturbance to underground artefacts
	Y	N	Overgrazing - cattle, horses, sheep	Loss of vegetation cover/soil
	Y	N	Poaching - cattle, horses, sheep	Damage to vegetation cover, leading to erosion
	Y	N	Rubbing point/erosion focus point - cattle, horses, sheep	As above, plus possible damage to upstanding features
HUMAN	Y	N	Demolition or removal of monument	Active removal of artefacts/monument
	Y	N	Rubbish dumping	Infilling/contamination
	Y	N	Trampling/poaching - on footpaths/desire lines	Loss of vegetation cover/soil damage resulting in erosion
	Y	N	Mountain bikes/Motorcross etc	As above
	Y	N	Deep ploughing/Drainage works/Building	Damage/disturbance of artefacts
	Y	N	Shallow cultivation/reseeds	As above
	Y	N	Tree/Scrub removal by uprooting	As above
	Y	N	Scrub burning in bonfires	Intense heat at point source, damage to artefacts and alteration of soil profile
VEGETATION	Y	N	Root damage - trees and scrub (especially where deep rooted - heavy crowns)	Damage/disturbance of artefacts
	Y	N	Tree windthrow	Potential massive damage/disturbance
	Y	N	Scrub encroachment - bracken, gorse, rhodedendron, thorn	Root or rhizome damage/disturbance (bracken least significant)
WEATHER/SITE FACTORS	Y	N	High rainfall/windspeeds - exposure	Greater erosion risk than level, non exposed site
	Y	N	High gradient	