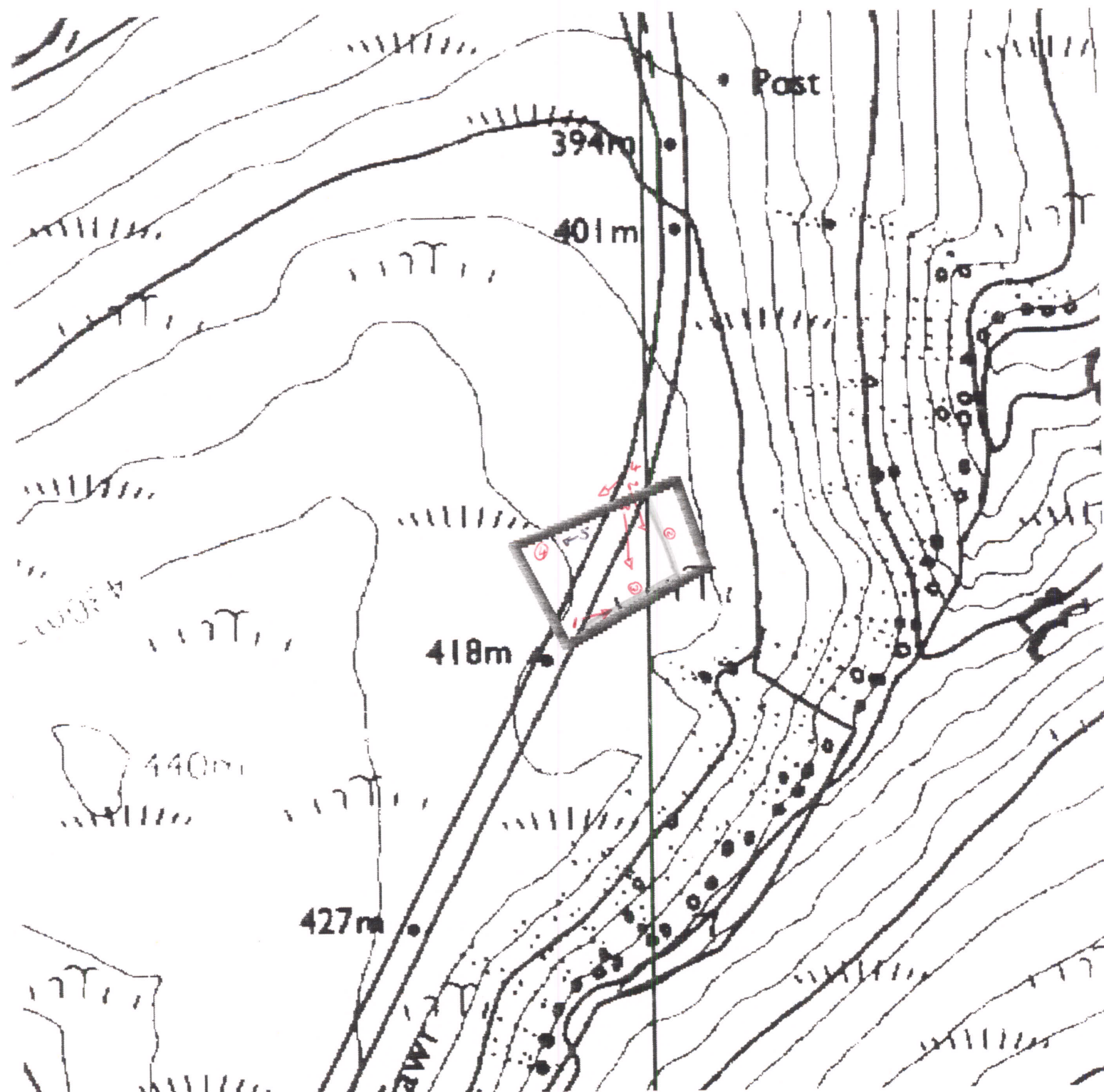


5078

Cambrian Mountains ESA SN 8396 9656



# CAMBRIAN MOUNTAINS ESA, HISTORIC MONITORING

BASELINE 1995

A

OS 1:10000 SHEET: <del>S07SH</del> /SN 89	GRID REF: <del>S07SH</del> /SN 8096 9656
PRN: 5078 SITE NAME: Ruis Faur Enclonne.	
AIR PHOTO No	LANDSCAPE TYPE: IIa
No GROUND PHOTOS: 5	
DATE SURVEYED: 5/11/95.	SURVEYED BY: G. Hopwood.
ACCESS: West of road - Mr Lenn's.	

B

LAND COVER:
SITE: Semi-improved with Junos. West of road. SNRS - grassy with Vaccinium. East of road.
HALO:

## CAMBRIAN MOUNTAINS ESA, HISTORIC MONITORING

BASELINE 1995

PRN 5078

C

### LAND MANAGEMENT:

**SITE:** Grazing. East of road not as improved.  
Mony with Vaccinium, Nardus.

**HALO:** West of road - greener - some junco  
but more improved.

D

### DESCRIPTION/CONDITION OF MONUMENT:

Only one corner of enclosure now visible. East of road on grassy slopes - bank with right angle can be seen. Bank 1.5-2m wide with v. shallow ditch on inside. West of road - semi-improved grassland - no obvious sign of banks - although there may be a faint ditch which formed part of feature. Faint suggestion of corner - photo 5.

E

### POTENTIALLY THREATENING FACTORS: (see Table 1)

West of road - banks have disappeared. East of road banks still present. No obvious threat - good veg cover and no signs of damage. Fairly exposed to elements.

F

**RATE OF DECAY:**

STABLE

SLOW

RAPID

CONTINUED?

YES

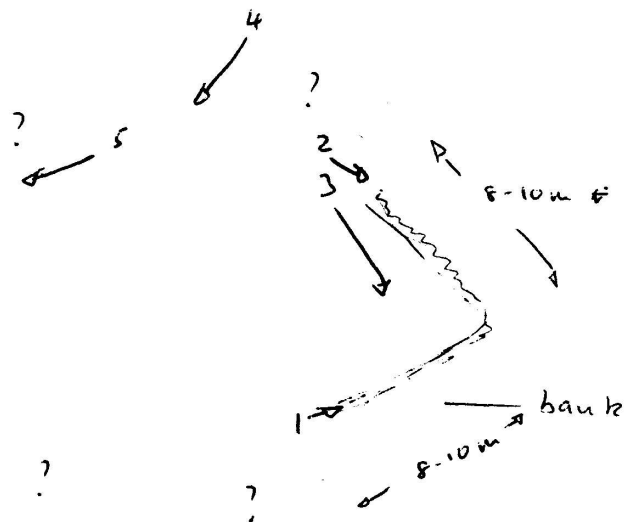
NO

# CAMBRIAN MOUNTAINS ESA, HISTORIC MONITORING

BASELINE 1995

SUPPLEMENTARY NOTES TO FIELD SURVEYS

PAGE...1... OF...1... PRN: 5078



NS Dimensions do not appear to tally with CPAT description of 40m x 30m with 2m wide, 30cm deep ditch. More square than rectangular.

TABLE 1

## CAMBRIAN MOUNTAINS ESA, HISTORIC MONITORING, BASELINE 1995

PRN 5078

POTENTIALLY THREATENING FACTORS				
AGENT	PRESENT		ACTION	SIGNIFICANCE
ANIMALS	Y	N	Burrowing - badgers, foxes, rabbits	Damage/disturbance to underground artefacts
	Y	N	Overgrazing - cattle, horses, sheep	Loss of vegetation cover/soil
	Y	N	Poaching - cattle, horses, sheep	Damage to vegetation cover, leading to erosion
	Y	N	Rubbing point/erosion focus point - cattle, horses, sheep	As above, plus possible damage to upstanding features
HUMAN	Y	N	Demolition or removal of monument	Active removal of artefacts/monument
	Y	N	Rubbish dumping	Infilling/contamination
	Y	N	Trampling/poaching - on footpaths/desire lines	Loss of vegetation cover/soil damage resulting in erosion
	Y	N	Mountain bikes/Motorcross etc	As above
	Y	N	Deep ploughing/Drainage works/Building	Damage/disturbance of artefacts
	Y	N	Shallow cultivation/reseeds	As above
	Y	N	Tree/Scrub removal by uprooting	As above
	Y	N	Scrub burning in bonfires	Intense heat at point source, damage to artefacts and alteration of soil profile
VEGETATION	Y	N	Root damage - trees and scrub (especially where deep rooted - heavy crowns)	Damage/disturbance of artefacts
	Y	N	Tree windthrow	Potential massive damage/disturbance
	Y	N	Scrub encroachment - bracken, gorse, rhodedendron, thorn	Root or rhizome damage/disturbance (bracken least significant)
WEATHER/SITE FACTORS	Y	N	High rainfall/windspeeds - exposure	Greater erosion risk than level, non exposed site
	Y	N	High gradient	

# CAMBRIAN MOUNTAINS ESA HISTORIC MONITORING RESURVEY 1999

A

OS 1:10,000 SHEET: SN/SO/SH 89		GRID REF: SN/SO/SH 8396 9656	
PRN: 5078 SITE NAME: Rhiw Fawr Enclosure.			
AIR PHOTO No: 648-248		LANDSCAPE TYPE: II a	
No GROUND PHOTOS: 5			
DATE RESURVEYED: 10/6/99		RESURVEYED BY: W. Somerfield	

IF CHANGES TO ANY OF THE FOLLOWING HAVE OCCURRED SINCE THE BASELINE, DETAIL THESE CHANGES IN THE APPROPRIATE SECTION OF THE RESURVEY PROFORMA.

A:CHANGES TO ACCESS?

B:CHANGES TO LANDCOVER

C:CHANGES TO LAND MANAGEMENT

D:CHANGES IN DESCRIPTION/CONDITION OF MONUMENT

E:CHANGES IN POTENTIALLY THREATENING FACTORS

F:CHANGE IN RATE OF DECAY

NO <input checked="" type="checkbox"/>	YES
NO <input checked="" type="checkbox"/>	YES
NO <input checked="" type="checkbox"/>	YES
NO <input checked="" type="checkbox"/>	YES
NO <input checked="" type="checkbox"/>	YES
NO <input checked="" type="checkbox"/>	YES

A: ACCESS

Checked + QC'd  
G. Hopwood 15/6/99

CAMBRIAN MOUNTAINS ESA HISTORIC MONITORING RESURVEY 1999

PRN

B:LANDCOVER

SITE:

HALO:

C:LAND MANAGEMENT

SITE:

HALO:

D:DESCRIPTION/CONDITION OF MONUMENT

E: POTENTIALLY THREATENING FACTORS (see table 1)

F

RATE OF DECAY:

STABLE

SLOW

RAPID

CONTINUED?

YES

NO

CAMBRIAN MOUNTAINS ESA, HISTORIC MONITORING RESURVEY 1999

SUPPLEMENTARY NOTES TO FIELD SURVEYS

PAGE..... OF.... PRN:

POTENTIALLY THREATENING FACTORS			
AGENT	PRESENT	ACTION	SIGNIFICANCE
ANIMALS	Y N	Burrowing - badgers, foxes, rabbits	Damage/disturbance to underground artefacts
	Y N	Overgrazing - cattle, horses, sheep	Loss of vegetation cover/soil
	Y N	Poaching - cattle, horses, sheep	Damage to vegetation cover, leading to erosion
	Y N	Rubbing point/erosion focus point - cattle, horses, sheep	As above, plus possible damage to upstanding features
HUMAN	Y N	Demolition or removal of monument	Active removal of artefacts/monument
	Y N	Rubbish dumping	Infilling/contamination
	Y N	Trampling/poaching - on footpaths/desire lines	Loss of vegetation cover/soil damage resulting in erosion
	Y N	Mountain bikes/Motorcross etc	As above
	Y N	Deep ploughing/Drainage works/Building	Damage/disturbance of artefacts
	Y N	Shallow cultivation/reseeds	As above
	Y N	Tree/Scrub removal by uprooting	As above
	Y N	Scrub burning in bonfires	Intense heat at point source, damage to artefacts and alteration of soil profile
VEGETATION	Y N	Root damage - trees and scrub (especially where deep rooted - heavy crowns)	Damage/disturbance of artefacts
	Y N	Tree windthrow	Potential massive damage/disturbance
	Y N	Scrub encroachment - bracken, gorse, rhododendron, thorn	Root or rhizome damage/disturbance (bracken least significant)
WEATHER/SITE FACTORS	Y N	High rainfall/windspeeds - exposure	Greater erosion risk than level, non exposed site
	Y N	High gradient	