

Page 2

# CAMBRIAN MOUNTAINS ESA, HISTORIC MONITORING

BASELINE 1995

A

OS 1:10000 SHEET: <del>SO/SH/SN</del> 89		GRID REF: <del>SO/SH/SN</del> 857 986	
PRN: 4967 SITE NAME: Moelfre Dam.			
AIR PHOTO No 649-39		LANDSCAPE TYPE: IIa	
No GROUND PHOTOS: 8			
DATE SURVEYED: 6/12/95		SURVEYED BY: G A HOWOOD	
ACCESS: Land owned by Mr D.T. Jarman, Ty Isaf Am, Llanbrynmair. Tel 01650 521269.			

B

<p><b>LAND COVER:</b></p> <p><b>SITE:</b> SNRG / open water. Dwarf shrub heath - Calluna/ Vaccinium.</p> <p><b>HALO:</b> SNRG, 100% Dwarf shrub heath, Calluna/ Vaccinium.</p>
--

## CAMBRIAN MOUNTAINS ESA, HISTORIC MONITORING

BASELINE 1995

PRN 4967

C

### LAND MANAGEMENT:

**SITE:** Rough grazing, unimproved enclosed moorland. Heather managed by burning to create mosaic of different aged vegetation. Calluna cover very  
**HALO:** uniform and in good condition. No stock on area when visited. Grouse seen + heard on calluna areas.

D

**DESCRIPTION/CONDITION OF MONUMENT:** 2 dams + ponds built across a natural stream course associated with mine workings further down valley. Dams appear to be constructed of loose slate and have a good cover of vegetation - calluna + vaccinium. Both dams of a similar size, approx 18m long, 11m wide and 4m high. Both have been breached centrally, probably deliberately. The lower dam has a purpose

E

### POTENTIALLY THREATENING FACTORS: (see Table 1)

Damage to dam structure from livestock trampling. Building of road has damaged the upper dam wall slightly. Overall probably stable and not at great risk of serious damage.

F

RATE OF DECAY:

STABLE

SLOW

RAPID

CONTINUED?

YES

NO

# CAMBRIAN MOUNTAINS ESA, HISTORIC MONITORING

BASELINE 1995

## SUPPLEMENTARY NOTES TO FIELD SURVEYS

PAGE... OF... PRN: 4967

D/ built overflow channel running around the N flank of the dam wall and then into the stream valley. Both dams virtually intact and retaining water.

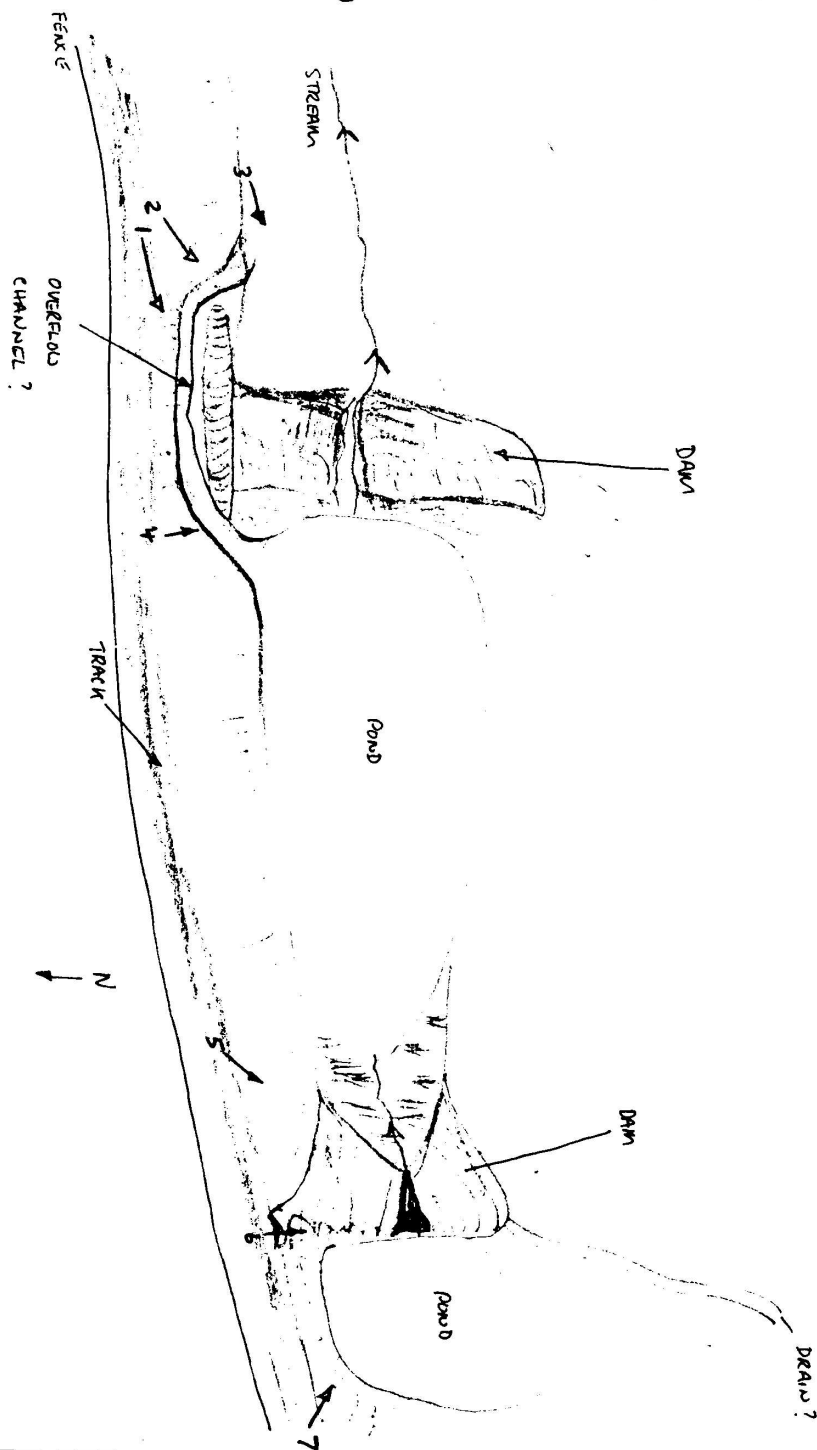


TABLE 1

## CAMBRIAN MOUNTAINS ESA, HISTORIC MONITORING, BASELINE 1995

PRN

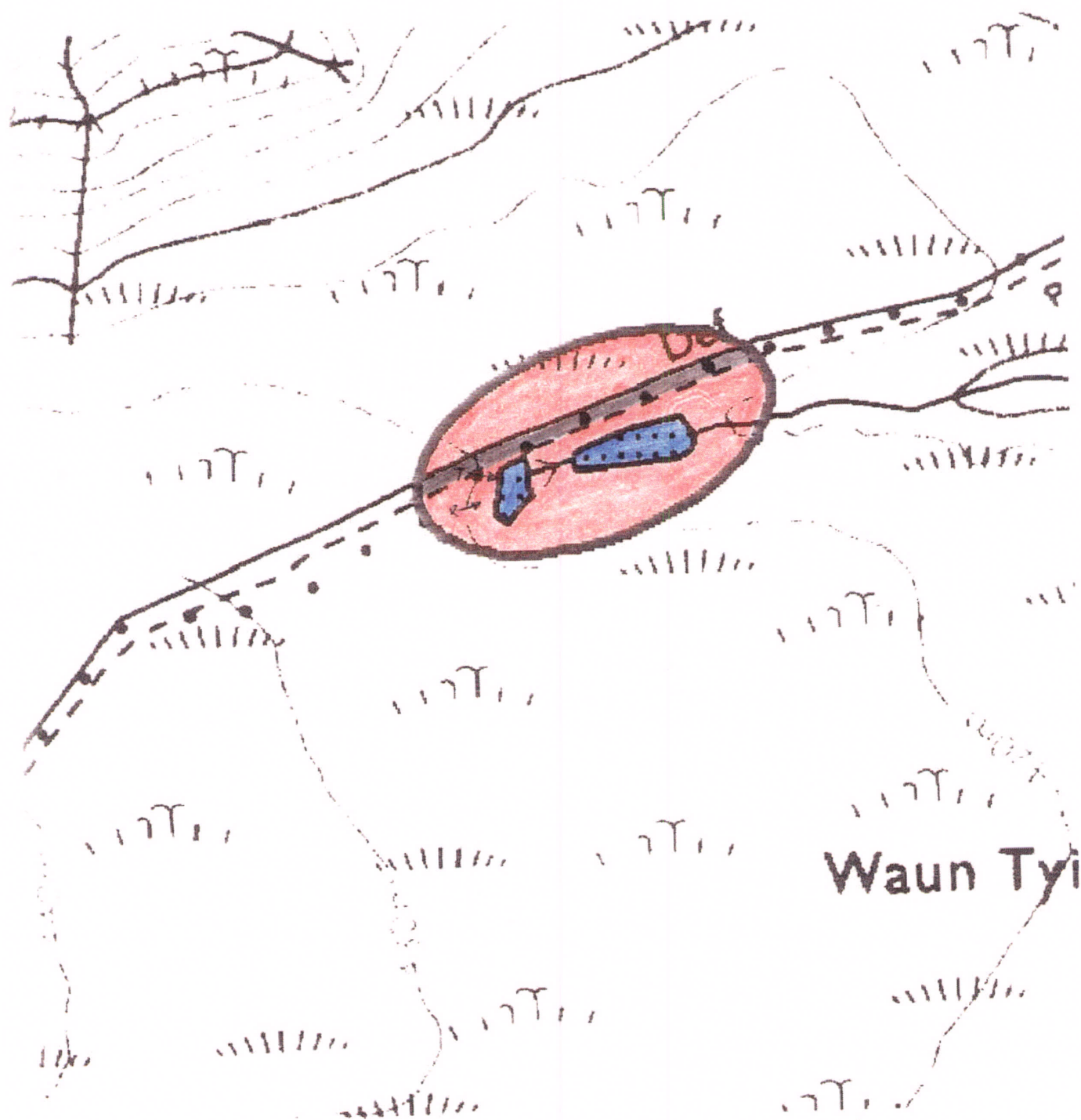
POTENTIALLY THREATENING FACTORS				
AGENT	PRESENT		ACTION	SIGNIFICANCE
ANIMALS	Y	N	Burrowing - badgers, foxes, rabbits	Damage/disturbance to underground artefacts
	Y	N	Overgrazing - cattle, horses, sheep	Loss of vegetation cover/soil
	Y	N	Poaching - cattle, horses, sheep	Damage to vegetation cover, leading to erosion
	Ⓢ	N	Rubbing point/erosion focus point - cattle, horses, sheep	As above, plus possible damage to upstanding features
HUMAN	Y	N	Demolition or removal of monument	Active removal of artefacts/monument
	Y	N	Rubbish dumping	Infilling/contamination
	Y	N	Trampling/poaching - on footpaths/desire lines	Loss of vegetation cover/soil damage resulting in erosion
	Y	N	Mountain bikes/Motorcross etc	As above
	Ⓢ	N	Deep ploughing/Drainage works/Building	Damage/disturbance of artefacts
	Y	N	Shallow cultivation/reseeds	As above
	Y	N	Tree/Scrub removal by uprooting	As above
	Y	N	Scrub burning in bonfires	Intense heat at point source, damage to artefacts and alteration of soil profile
VEGETATION	Y	N	Root damage - trees and scrub (especially where deep rooted - heavy crowns)	Damage/disturbance of artefacts
	Y	N	Tree windthrow	Potential massive damage/disturbance
	Y	N	Scrub encroachment - bracken, gorse, rhodedendron, thorn	Root or rhizome damage/disturbance (bracken least significant)
WEATHER/SITE FACTORS	Y	N	High rainfall/windspeeds - exposure	Greater erosion risk than level, non exposed site
	Y	N	High gradient	

4927

67

Cambrian Mountains ESA

857 985



# CAMBRIAN MOUNTAINS ESA HISTORIC MONITORING RESURVEY 1999

A

OS 1:10,000 SHEET: SN/ <del>SO</del> /SH 89		GRID REF: SN/ <del>SO</del> /SH 857 986	
PRN: 4967 SITE NAME: Moeltre Dam			
AIR PHOTO No: 649-39		LANDSCAPE TYPE: II a	
No GROUND PHOTOS: 8			
DATE RESURVEYED: 11/6/99		RESURVEYED BY: W. Somerfeld	

IF CHANGES TO ANY OF THE FOLLOWING HAVE OCCURRED SINCE THE BASELINE, DETAIL THESE CHANGES IN THE APPROPRIATE SECTION OF THE RESURVEY PROFORMA.

A:CHANGES TO ACCESS?

B:CHANGES TO LANDCOVER

C:CHANGES TO LAND MANAGEMENT

D:CHANGES IN DESCRIPTION/CONDITION OF MONUMENT

E:CHANGES IN POTENTIALLY THREATENING FACTORS

F:CHANGE IN RATE OF DECAY

NO <input checked="" type="checkbox"/>	YES
NO <input checked="" type="checkbox"/>	YES
NO <input checked="" type="checkbox"/>	YES
NO <input checked="" type="checkbox"/>	YES
NO <input checked="" type="checkbox"/>	YES
NO <input checked="" type="checkbox"/>	YES

A: ACCESS

Checked + Qc'd

G. Hopwood 15/6/99

CAMBRIAN MOUNTAINS ESA HISTORIC MONITORING RESURVEY 1999

PRN

B:LANDCOVER

SITE:

HALO:

C:LAND MANAGEMENT

SITE:

HALO:

D:DESCRIPTION/CONDITION OF MONUMENT

E: POTENTIALLY THREATENING FACTORS (see table 1)

F

RATE OF DECAY:

STABLE

SLOW

RAPID

CONTINUED?

YES

NO



CAMBRIAN MOUNTAINS ESA, HISTORIC MONITORING RESURVEY 1999

SUPPLEMENTARY NOTES TO FIELD SURVEYS

PAGE..... OF.... PRN:

A large, empty rectangular box with a black border, intended for handwritten or typed notes related to the field surveys. The box occupies the majority of the page area below the header information.

POTENTIALLY THREATENING FACTORS			
AGENT	PRESENT	ACTION	SIGNIFICANCE
ANIMALS	Y N	Burrowing - badgers, foxes, rabbits	Damage/disturbance to underground artefacts
	Y N	Overgrazing - cattle, horses, sheep	Loss of vegetation cover/soil
	Y N	Poaching - cattle, horses, sheep	Damage to vegetation cover, leading to erosion
	(Y) N	Rubbing point/erosion focus point - cattle, horses, sheep	As above, plus possible damage to upstanding features
HUMAN	Y N	Demolition or removal of monument	Active removal of artefacts/monument
	Y N	Rubbish dumping	Infilling/contamination
	Y N	Trampling/poaching - on footpaths/desire lines	Loss of vegetation cover/soil damage resulting in erosion
	Y N	Mountain bikes/Motorcross etc	As above
	(Y) N	Deep ploughing/Drainage works/Building	Damage/disturbance of artefacts
	Y N	Shallow cultivation/reseeds	As above
	Y N	Tree/Scrub removal by uprooting	As above
	Y N	Scrub burning in bonfires	Intense heat at point source, damage to artefacts and alteration of soil profile
VEGETATION	Y N	Root damage - trees and scrub (especially where deep rooted - heavy crowns)	Damage/disturbance of artefacts
	Y N	Tree windthrow	Potential massive damage/disturbance
	Y N	Scrub encroachment - bracken, gorse, rhodedendron, thorn	Root or rhizome damage/disturbance (bracken least significant)
WEATHER/SITE FACTORS	Y N	High rainfall/windspeeds - exposure	Greater erosion risk than level, non exposed site
	Y N	High gradient	