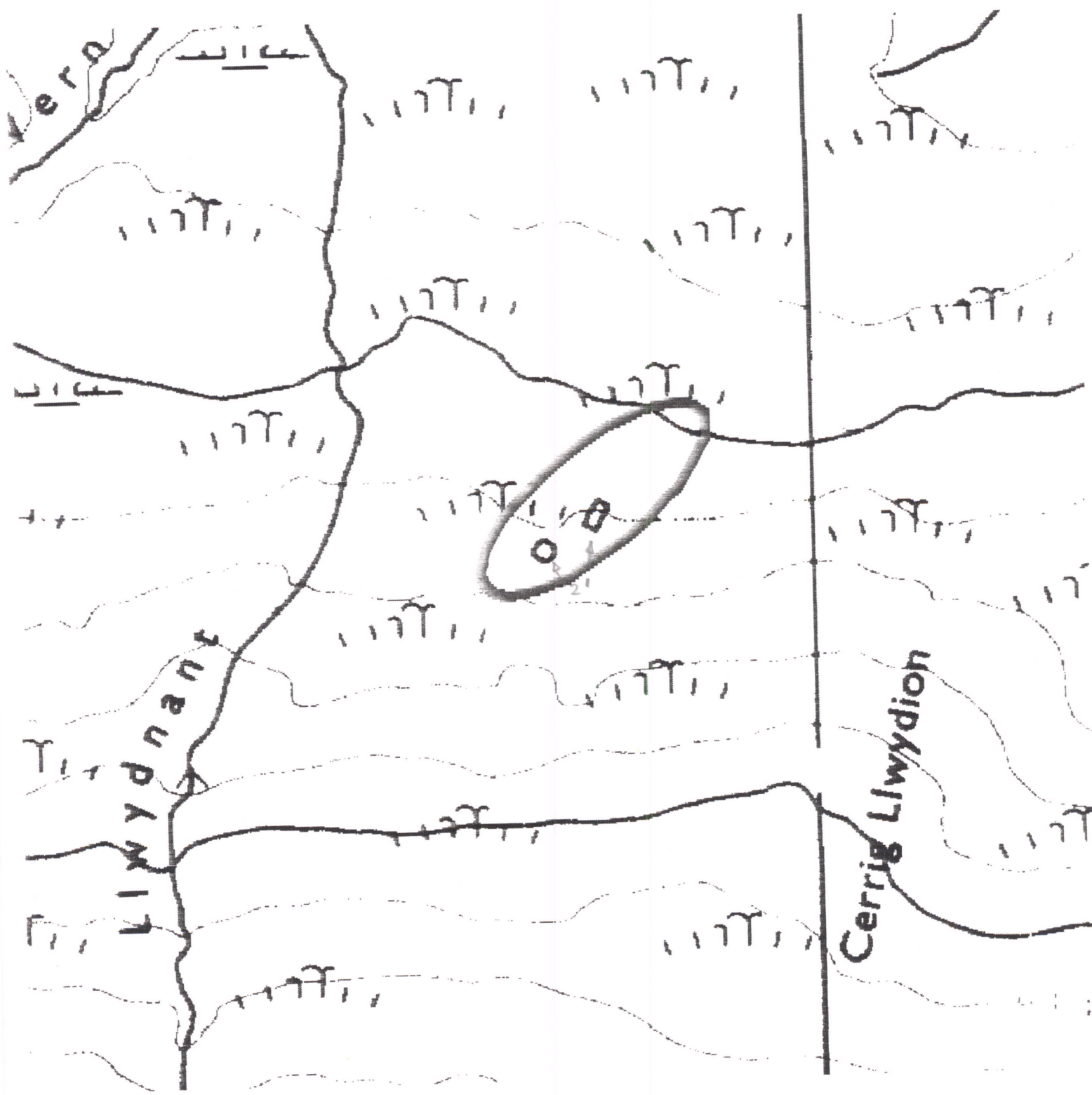


4328\4329

Cambrian Mountains ESA

8788 6235



CAMBRIAN MOUNTAINS ESA, HISTORIC MONITORING

BASELINE 1995

A

OS 1:10000 SHEET: SO/SH/SN	GRID REF: SO/SH/SN
PRN: 4328 SITE NAME:	
AIR PHOTO No	LANDSCAPE TYPE:
No GROUND PHOTOS:	
DATE SURVEYED: 14/12/95	SURVEYED BY:
ACCESS:	

B

LAND COVER:
SITE: 30.00 10.00 10.00 10.00
HALO:

CAMBRIAN MOUNTAINS ESA, HISTORIC MONITORING

BASELINE 1995

PRN

C

LAND MANAGEMENT:

SITE: *discovered, near gate to new road.*

HALO:

D

DESCRIPTION/CONDITION OF MONUMENT:

Area has been used for sheep grazing since 1900. The monument is a small, circular, stone structure, about 12" in diameter, located in a valley. The structure is made of stone and has a low wall around it. The wall is made of stone and is about 12" high. The structure is used for sheep grazing.

E

POTENTIALLY THREATENING FACTORS: (see Table 1)

F

RATE OF DECAY:

STABLE

SLOW

RAPID

CONTINUED?

YES

NO

CAMBRIAN MOUNTAINS ESA, HISTORIC MONITORING

BASELINE 1995

SUPPLEMENTARY NOTES TO FIELD SURVEYS

PAGE..... OF..... PRN:

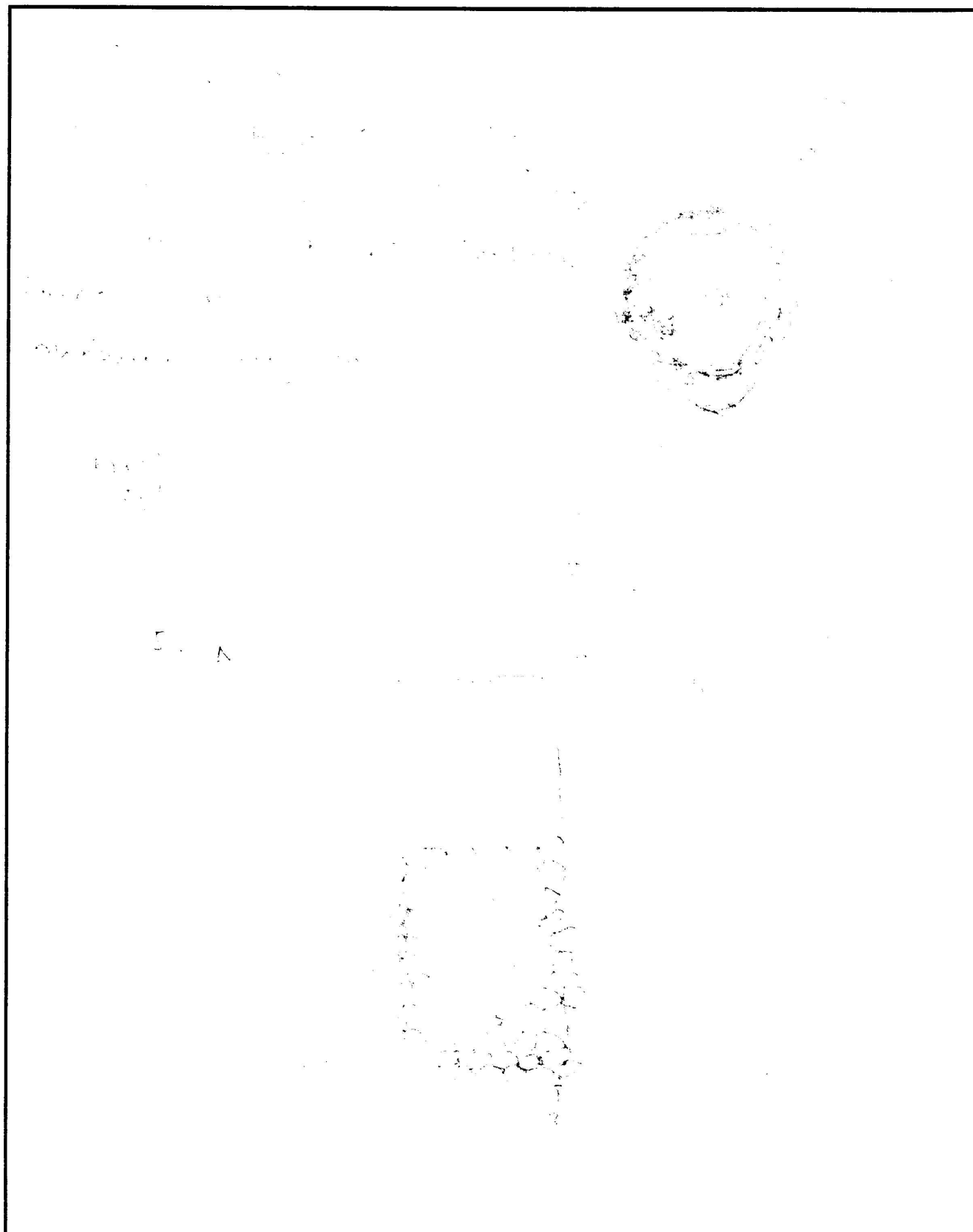


TABLE 1

CAMBRIAN MOUNTAINS ESA, HISTORIC MONITORING, BASELINE 1995

PRN

POTENTIALLY THREATENING FACTORS				
AGENT	PRESENT		ACTION	SIGNIFICANCE
ANIMALS	Y	N	Burrowing - badgers, foxes, rabbits	Damage/disturbance to underground artefacts
	Y	N	Overgrazing - cattle, horses, sheep	Loss of vegetation cover/soil
	Y	N	Poaching - cattle, horses, sheep	Damage to vegetation cover, leading to erosion
	Y	N	Rubbing point/erosion focus point - cattle, horses, sheep	As above, plus possible damage to upstanding features
HUMAN	Y	N	Demolition or removal of monument	Active removal of artefacts/monument
	Y	N	Rubbish dumping	Infilling/contamination
	Y	N	Trampling/poaching - on footpaths/desire lines	Loss of vegetation cover/soil damage resulting in erosion
	Y	N	Mountain bikes/Motorcross etc	As above
	Y	N	Deep ploughing/Drainage works/Building	Damage/disturbance of artefacts
	Y	N	Shallow cultivation/reseeds	As above
	Y	N	Tree/Scrub removal by uprooting	As above
	Y	N	Scrub burning in bonfires	Intense heat at point source, damage to artefacts and alteration of soil profile
VEGETATION	Y	N	Root damage - trees and scrub (especially where deep rooted - heavy crowns)	Damage/disturbance of artefacts
	Y	N	Tree windthrow	Potential massive damage/disturbance
	Y	N	Scrub encroachment - bracken, gorse, rhododendron, thorn	Root or rhizome damage/disturbance (bracken least significant)
WEATHER/SITE FACTORS	Y	N	High rainfall/windspeeds - exposure	Greater erosion risk than level, non exposed site
	Y	N	High gradient	

CAMBRIAN MOUNTAINS ESA HISTORIC MONITORING RESURVEY 1999

A

OS 1:10,000 SHEET: SN/ SO /SH 86		GRID REF: SN/ SO /SH 8788 6235	
PRN: 4328/4329 SITE NAME: Cerrig Llwydchwr longhouse/hut.			
AIR PHOTO No: 649-90		LANDSCAPE TYPE: Ic	
No GROUND PHOTOS: 10			
DATE RESURVEYED: 24/6/99		RESURVEYED BY: W. Somerfield	

IF CHANGES TO ANY OF THE FOLLOWING HAVE OCCURRED SINCE THE BASELINE, DETAIL THESE CHANGES IN THE APPROPRIATE SECTION OF THE RESURVEY PROFORMA.

A:CHANGES TO ACCESS?

B:CHANGES TO LANDCOVER

C:CHANGES TO LAND MANAGEMENT

D:CHANGES IN DESCRIPTION/CONDITION OF MONUMENT

E:CHANGES IN POTENTIALLY THREATENING FACTORS

F:CHANGE IN RATE OF DECAY

NO ✓	YES
NO ✓	YES
NO ✓	YES
NO ✓	YES
NO ✓	YES
NO ✓	YES

A: ACCESS

Checked + Qc'd

GA Hopwood 5/7/99

CAMBRIAN MOUNTAINS ESA HISTORIC MONITORING RESURVEY 1999

PRN

B:LANDCOVER

SITE:

HALO:

C:LAND MANAGEMENT

SITE:

HALO:

D:DESCRIPTION/CONDITION OF MONUMENT

E: POTENTIALLY THREATENING FACTORS (see table 1)

F

RATE OF DECAY:

STABLE

SLOW

RAPID

CONTINUED?

YES

NO

CAMBRIAN MOUNTAINS ESA, HISTORIC MONITORING RESURVEY 1999

SUPPLEMENTARY NOTES TO FIELD SURVEYS

PAGE..... OF.... PRN:

POTENTIALLY THREATENING FACTORS			
AGENT	PRESENT	ACTION	SIGNIFICANCE
ANIMALS	Y N	Burrowing - badgers, foxes, rabbits	Damage/disturbance to underground artefacts
	Y N	Overgrazing - cattle, horses, sheep	Loss of vegetation cover/soil
	Y N	Poaching - cattle, horses, sheep	Damage to vegetation cover, leading to erosion
	Y N	Rubbing point/erosion focus point - cattle, horses, sheep	As above, plus possible damage to upstanding features
HUMAN	Y N	Demolition or removal of monument	Active removal of artefacts/monument
	Y N	Rubbish dumping	Infilling/contamination
	Y N	Trampling/poaching - on footpaths/desire lines	Loss of vegetation cover/soil damage resulting in erosion
	Y N	Mountain bikes/Motorcross etc	As above
	Y N	Deep ploughing/Drainage works/Building	Damage/disturbance of artefacts
	Y N	Shallow cultivation/reseeds	As above
	Y N	Tree/Scrub removal by uprooting	As above
	Y N	Scrub burning in bonfires	Intense heat at point source, damage to artefacts and alteration of soil profile
VEGETATION	Y N	Root damage - trees and scrub (especially where deep rooted - heavy crowns)	Damage/disturbance of artefacts
	Y N	Tree windthrow	Potential massive damage/disturbance
	Y N	Scrub encroachment - bracken, gorse, rhodedendron, thorn	Root or rhizome damage/disturbance (bracken least significant)
WEATHER/SITE FACTORS	Y N	High rainfall/windspeeds - exposure	Greater erosion risk than level, non exposed site
	Y N	High gradient	