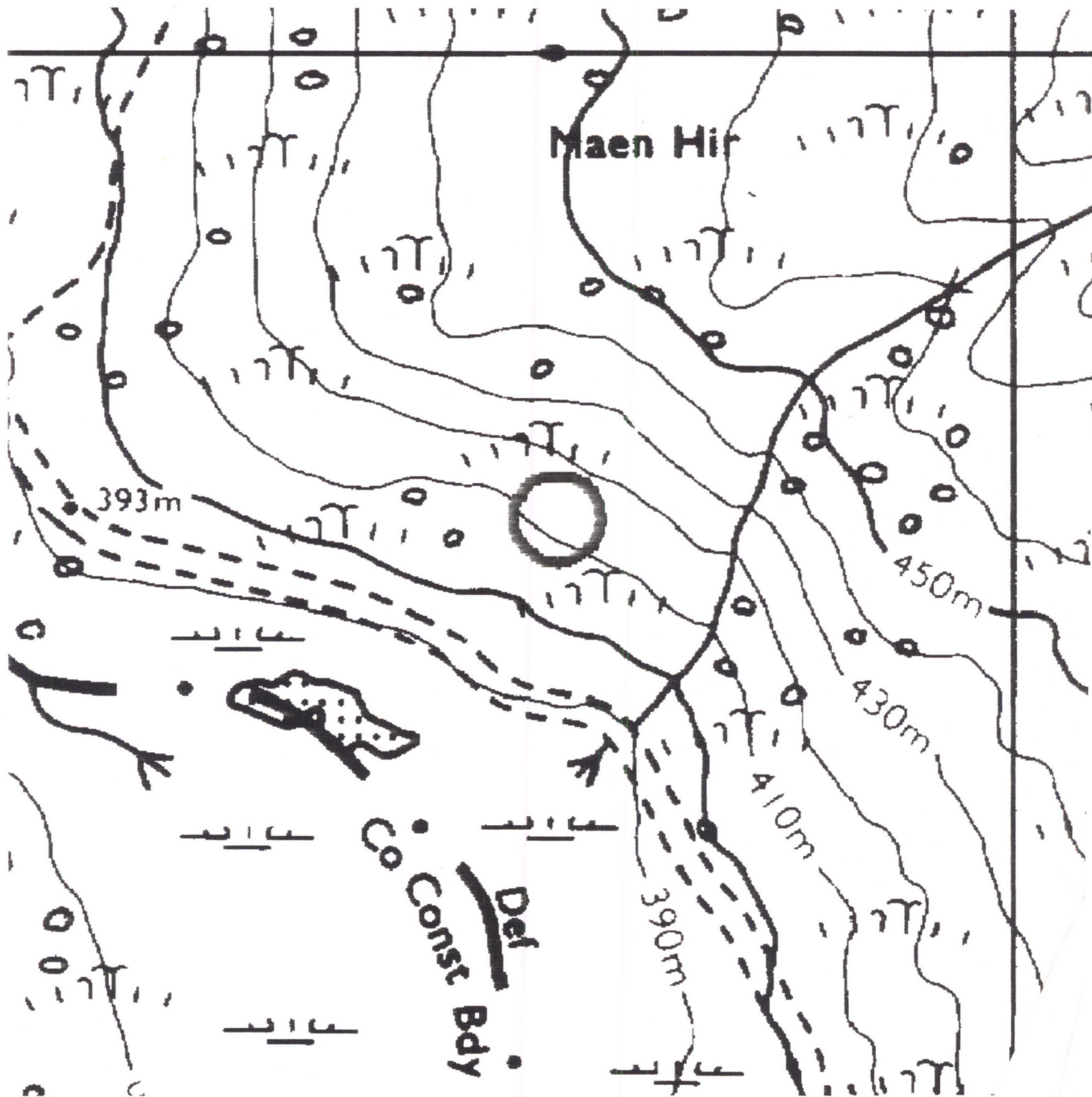


4326

Cambrian Mountains ESA SN 8579 7577



CAMBRIAN MOUNTAINS ESA, HISTORIC MONITORING

BASELINE 1995

A

OS 1:10000 SHEET: SO/SH /SN 87	GRID REF: SO/SH /SN 8579 7517
PRN: 4326 SITE NAME:	
AIR PHOTO No 649-22	LANDSCAPE TYPE:
No GROUND PHOTOS:	
DATE SURVEYED: 12/1/96	SURVEYED BY: GA Horwood
ACCESS:	

B

LAND COVER:
SITE: Grassy swards with Juncus.
HALO:

CAMBRIAN MOUNTAINS ESA, HISTORIC MONITORING

BASELINE 1995

PRN 4326

C

LAND MANAGEMENT:

SITE: Unenclosed, unimproved rough grazing. Sheep present. Area heavily grazed.

HALO:

D

DESCRIPTION/CONDITION OF MONUMENT:

1. The monument is a small, irregularly shaped area of land, approximately 100m x 50m, located in the north-east corner of the Cambrian Mountains National Park. It is bounded to the north and east by the park boundary, and to the south and west by a stream. The monument is a grassy field, and is used for grazing by sheep. It is a typical example of the rough grazing that is found in the park.

E

POTENTIALLY THREATENING FACTORS: (see Table 1)

1. The monument is a small, irregularly shaped area of land, approximately 100m x 50m, located in the north-east corner of the Cambrian Mountains National Park. It is bounded to the north and east by the park boundary, and to the south and west by a stream. The monument is a grassy field, and is used for grazing by sheep. It is a typical example of the rough grazing that is found in the park.

F

RATE OF DECAY:

STABLE

SLOW

RAPID

CONTINUED?

YES

NO

CAMBRIAN MOUNTAINS ESA, HISTORIC MONITORING

BASELINE 1995

SUPPLEMENTARY NOTES TO FIELD SURVEYS

PAGE..... OF..... PRN:

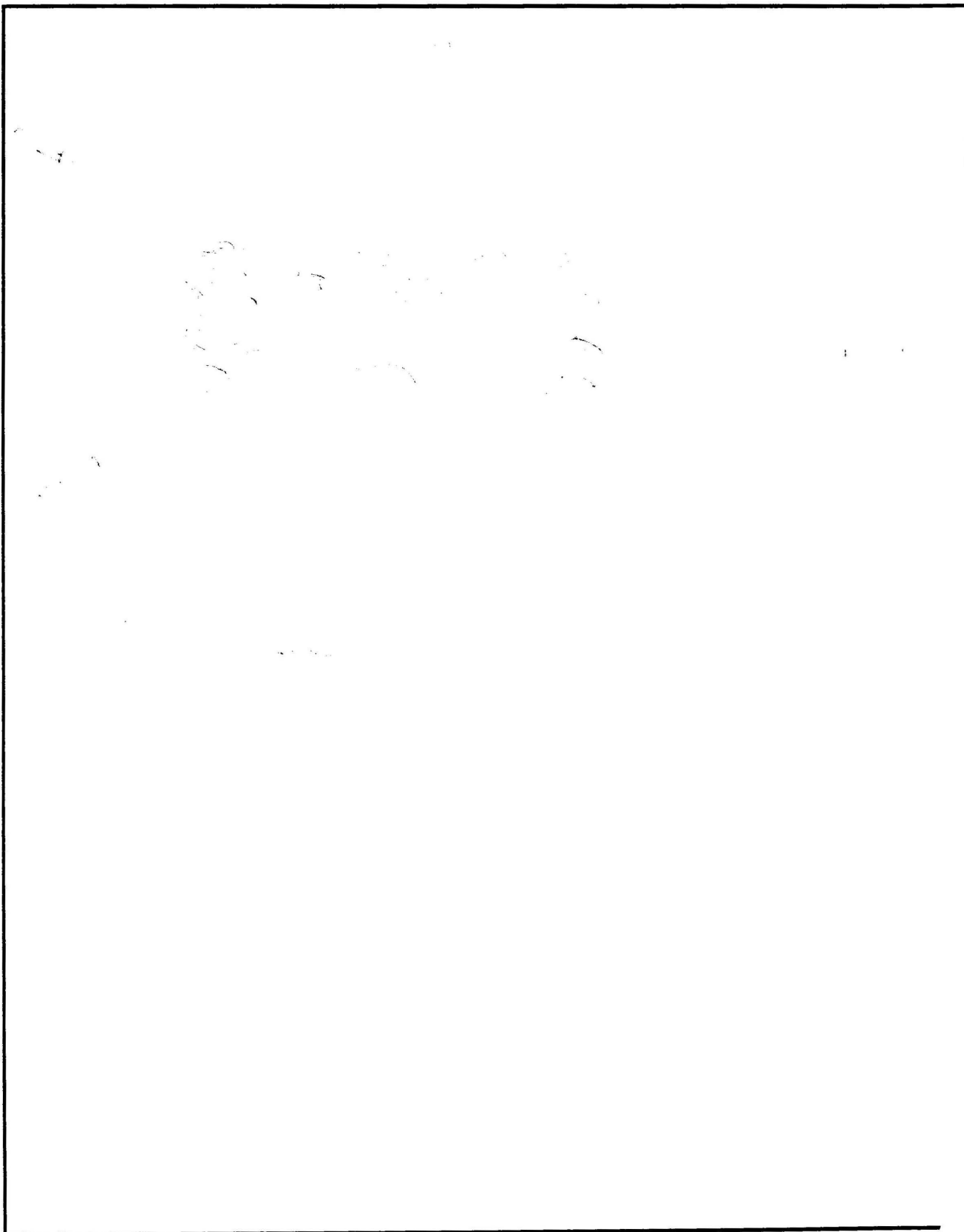


TABLE 1**CAMBRIAN MOUNTAINS ESA, HISTORIC MONITORING, BASELINE 1995****PRN**

POTENTIALLY THREATENING FACTORS				
AGENT	PRESENT		ACTION	SIGNIFICANCE
ANIMALS	Y	N	Burrowing - badgers, foxes, rabbits	Damage/disturbance to underground artefacts
	Y	N	Overgrazing - cattle, horses, sheep	Loss of vegetation cover/soil
	Y	N	Poaching - cattle, horses, sheep	Damage to vegetation cover, leading to erosion
	Y	N	Pudding point erosion focus point - cattle, horses, sheep	As above, plus possible damage to upstanding features
HUMAN	Y	N	Demolition or removal of monument	Active removal of artefacts/monument
	Y	N	Rubbish dumping	Infilling/contamination
	Y	N	Trampling/poaching - on footpaths/desire lines	Loss of vegetation cover/soil damage resulting in erosion
	Y	N	Mountain bikes/Motorcross etc	As above
	Y	N	Deep ploughing/Drainage works/Building	Damage/disturbance of artefacts
	Y	N	Shallow cultivation/reseeds	As above
	Y	N	Tree/Scrub removal by uprooting	As above
	Y	N	Scrub burning in bonfires	Intense heat at point source, damage to artefacts and alteration of soil profile
VEGETATION	Y	N	Root damage - trees and scrub (especially where deep rooted - heavy crowns)	Damage/disturbance of artefacts
	Y	N	Tree windthrow	Potential massive damage/disturbance
	Y	N	Scrub encroachment - bracken, gorse, rhodedendron, thorn	Root or rhizome damage/disturbance (bracken least significant)
WEATHER/SITE FACTORS	Y	N	High rainfall/windspeeds - exposure	Greater erosion risk than level, non exposed site
	Y	N	High gradient	

Site no. (23)

CAMBRIAN MOUNTAINS ESA HISTORIC MONITORING RESURVEY 1999

A

OS 1:10,000 SHEET: SN/SO/SH		GRID REF: SN/SO/SH	
PRN: 4326 SITE NAME: MIREN AIR ENCLOSURE			
AIR PHOTO No:		LANDSCAPE TYPE:	
No GROUND PHOTOS: 5			
DATE RESURVEYED: 4/6/99		RESURVEYED BY: GAT + W.S.	

IF CHANGES TO ANY OF THE FOLLOWING HAVE OCCURRED SINCE THE BASELINE, DETAIL THESE CHANGES IN THE APPROPRIATE SECTION OF THE RESURVEY PROFORMA.

A:CHANGES TO ACCESS?

B:CHANGES TO LANDCOVER

C:CHANGES TO LAND MANAGEMENT

D:CHANGES IN DESCRIPTION/CONDITION OF MONUMENT

E:CHANGES IN POTENTIALLY THREATENING FACTORS

F:CHANGE IN RATE OF DECAY

NO <input checked="" type="checkbox"/>	YES
NO <input checked="" type="checkbox"/>	YES
NO	YES <input checked="" type="checkbox"/>
NO <input checked="" type="checkbox"/>	YES
NO <input checked="" type="checkbox"/>	YES
NO <input checked="" type="checkbox"/>	YES

A: ACCESS

Checked + QCD
GAT + WOOD 15/6/99

CAMBRIAN MOUNTAINS ESA HISTORIC MONITORING RESURVEY 1999

PRN

B:LANDCOVER

SITE:

HALO:

C:LAND MANAGEMENT

SITE:

HALO: Access track for feeding site more pronounced.
May cause increase in rate of erosion of site.
Two more photographs taken (4 x 5) to monitor
this situation.

D:DESCRIPTION/CONDITION OF MONUMENT

E: POTENTIALLY THREATENING FACTORS (see table 1)

F

RATE OF DECAY:

STABLE

SLOW

RAPID

CONTINUED?

YES

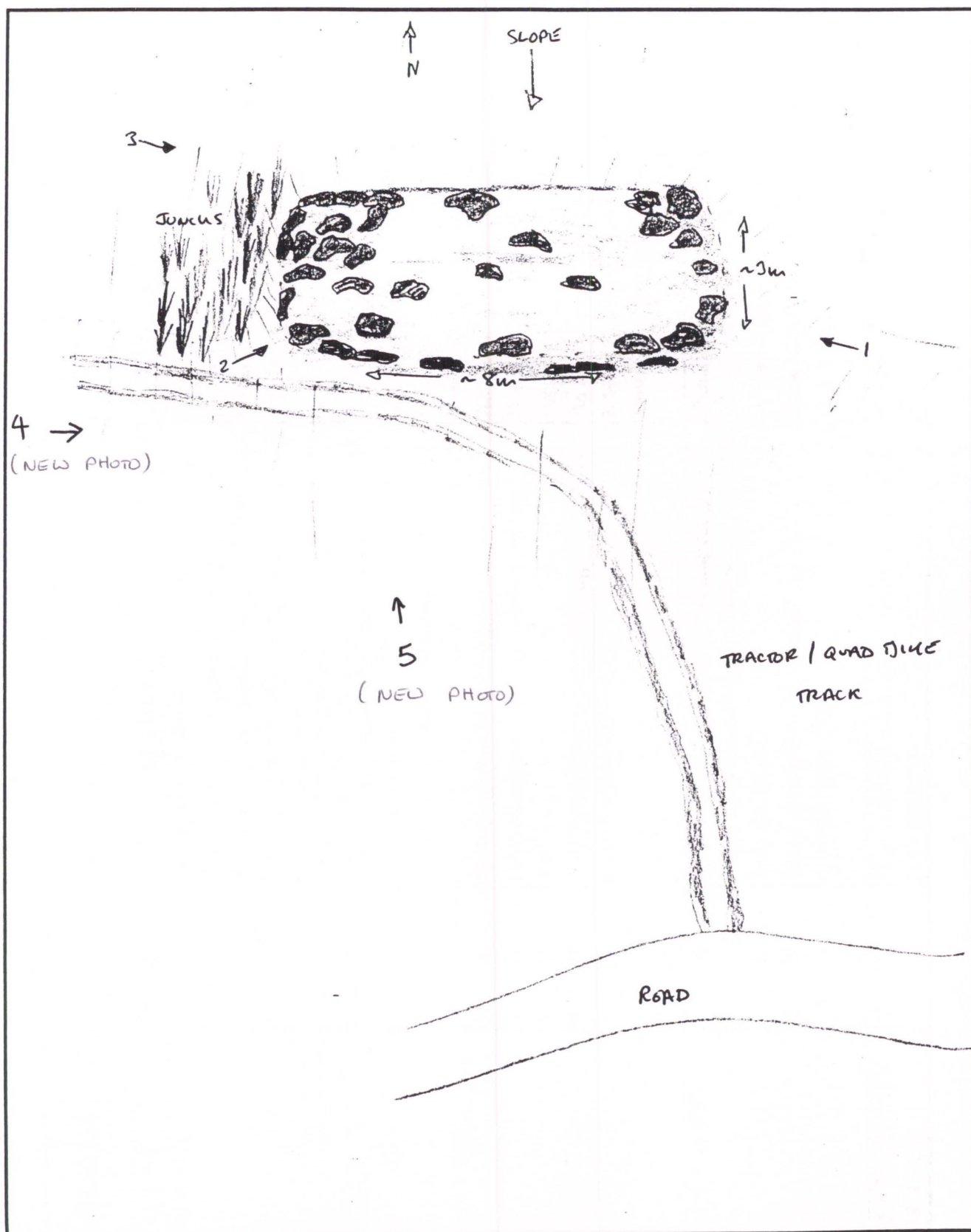
NO

CAMBRIAN MOUNTAINS ESA, HISTORIC MONITORING

~~BASELINE 1995~~ RESURVEY 1999

SUPPLEMENTARY NOTES TO FIELD SURVEYS

PAGE 1... OF 1... PRN: 4326



POTENTIALLY THREATENING FACTORS				
AGENT	PRESENT		ACTION	SIGNIFICANCE
ANIMALS	Y	N	Burrowing - badgers, foxes, rabbits	Damage/disturbance to underground artefacts
	Y	N	Overgrazing - cattle, horses, sheep	Loss of vegetation cover/soil
	Y	N	Poaching - cattle, horses, sheep	Damage to vegetation cover, leading to erosion
	Y	N	Rubbing point/erosion focus point - cattle, horses, sheep	As above, plus possible damage to upstanding features
HUMAN	Y	N	Demolition or removal of monument	Active removal of artefacts/monument
	Y	N	Rubbish dumping	Infilling/contamination
	Y	N	Trampling/poaching - on footpaths/desire lines	Loss of vegetation cover/soil damage resulting in erosion
	Y	N	Mountain bikes/Motorcross etc	As above
	Y	N	Deep ploughing/Drainage works/Building	Damage/disturbance of artefacts
	Y	N	Shallow cultivation/reseeds	As above
	Y	N	Tree/Scrub removal by uprooting	As above
	Y	N	Scrub burning in bonfires	Intense heat at point source, damage to artefacts and alteration of soil profile
VEGETATION	Y	N	Root damage - trees and scrub (especially where deep rooted - heavy crowns)	Damage/disturbance of artefacts
	Y	N	Tree windthrow	Potential massive damage/disturbance
	Y	N	Scrub encroachment - bracken, gorse, rhodedendron, thorn	Root or rhizome damage/disturbance (bracken least significant)
WEATHER/SITE FACTORS	Y	N	High rainfall/windspeeds - exposure	Greater erosion risk than level, non exposed site
	Y	N	High gradient	