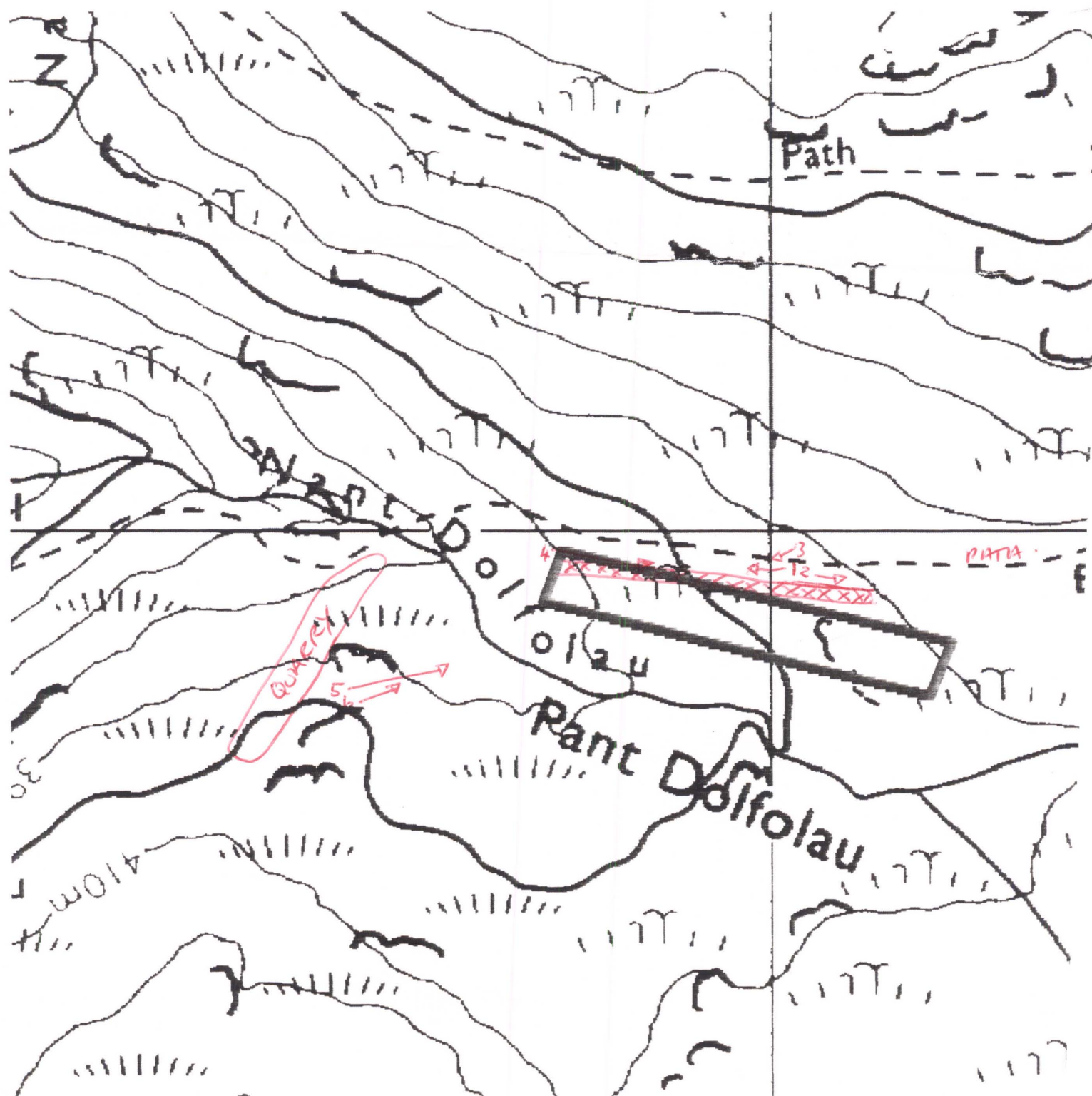


4198

Cambrian Mountains ESA

SN 9190 6599



# CAMBRIAN MOUNTAINS ESA, HISTORIC MONITORING

BASELINE 1995

A

OS 1:1000 SHEET: <del>SM</del> /SN 96	GRID REF: SM/SN 9190 6599
PRN: 4198 SITE NAME: Dol Folan Dyke	
AIR PHOTO No	LANDSCAPE TYPE: Ib
No GROUND PHOTOS: 6	
DATE SURVEYED: 19/10/95	SURVEYED BY: G. HOPWOOD
ACCESS:	

B

LAND COVER:
SITE: 100% SNRS - Hea. Me / Vaccinium.
HALO: As above.

## CAMBRIAN MOUNTAINS ESA. HISTORIC MONITORING

BASELINE 1995

PRN 4198

C

### LAND MANAGEMENT:

**SITE:** Rough grazing - sheep present when visited.  
Very good cover of heather + Vaccinium  
with regeneration

~~HALO:~~

D

### DESCRIPTION/CONDITION OF MONUMENT:

Linear bank with obvious ditch on right  
looking down slope. Complete cover of Heather/  
Vaccinium + bracken.

Ditch to left but obvious.

Appears in good condition - no obvious damage  
Width 3.5m at base, ~1m at top. ~1m high  
from bottom of ditch.

E

### POTENTIALLY THREATENING FACTORS: (see Table 1)

None at present. Bridleway run parallel with  
feature but there is no indication of any  
damage. Feature appears stable at present.

F

RATE OF DECAY:

STABLE

SLOW

RAPID

CONTINUED?

YES

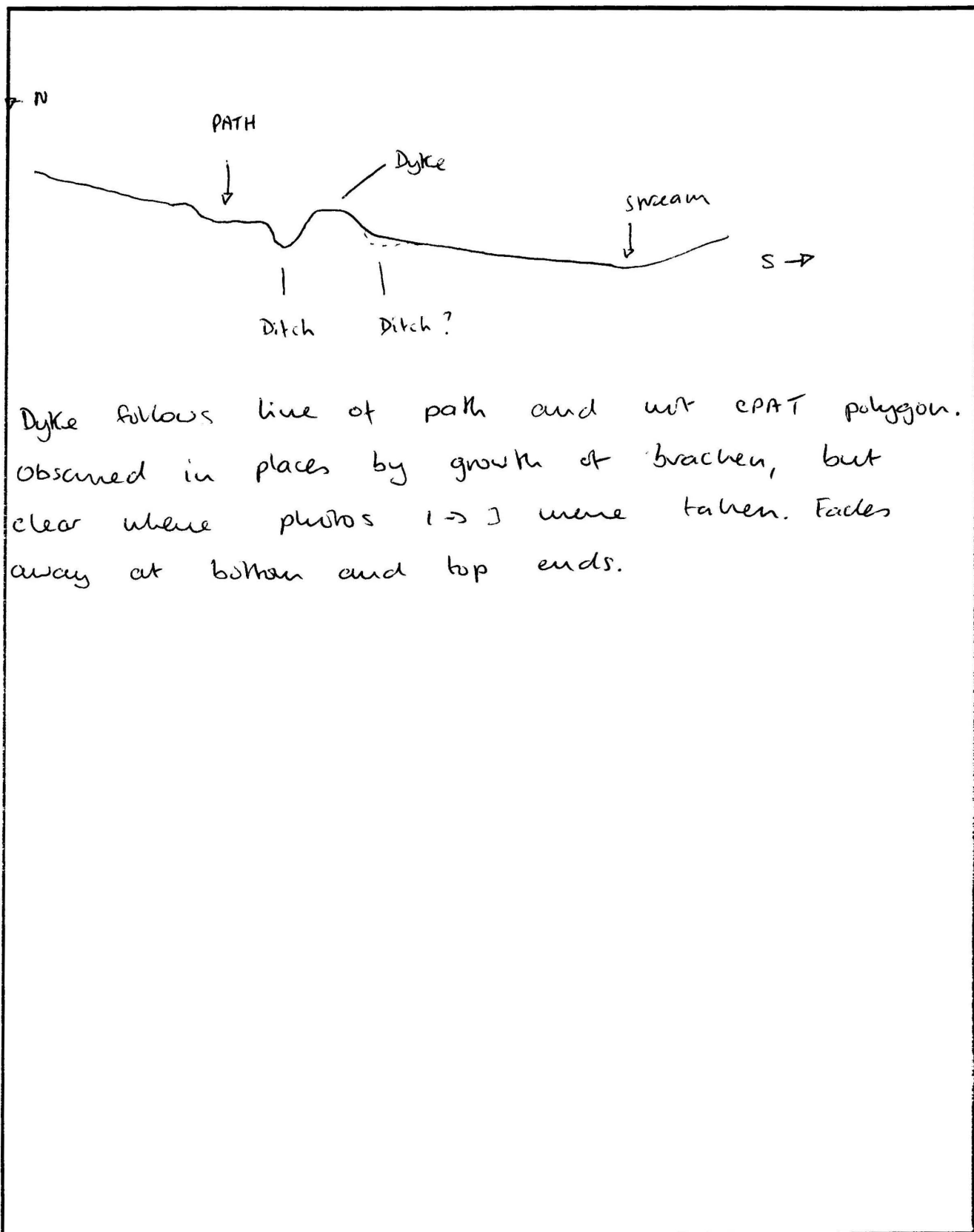
NO

# CAMBRIAN MOUNTAINS ESA. HISTORIC MONITORING

BASELINE 1995

SUPPLEMENTARY NOTES TO FIELD SURVEYS

PAGE...1. OF....1 PRN: 4198



Dyke follows line of path and with CPAT polygon. Obscured in places by growth of bracken, but clear where photos 1-3 were taken. Fades away at bottom and top ends.

**TABLE 1****CAMBRIAN MOUNTAINS ESA, HISTORIC MONITORING, BASELINE 1995****PRN**

<b>POTENTIALLY THREATENING FACTORS</b>			
<b>AGENT</b>	<b>PRESENT</b>	<b>ACTION</b>	<b>SIGNIFICANCE</b>
<b>ANIMALS</b>	Y   N	Burrowing - badgers, foxes, rabbits	Damage/disturbance to underground artefacts
	Y   N	Overgrazing - cattle, horses, sheep	Loss of vegetation cover/soil
	Y   N	Poaching - cattle, horses, sheep	Damage to vegetation cover, leading to erosion
	Y   N	Rubbing point/erosion focus point - cattle, horses, sheep	As above, plus possible damage to upstanding features
<b>HUMAN</b>	Y   N	Demolition or removal of monument	Active removal of artefacts/monument
	Y   N	Rubbish dumping	Infilling/contamination
	Y   N	Trampling/poaching - on footpaths/desire lines	Loss of vegetation cover/soil damage resulting in erosion
	Y   N	Mountain bikes/Motorcross etc	As above
	Y   N	Deep ploughing/Drainage works/Building	Damage/disturbance of artefacts
	Y   N	Shallow cultivation/reseeds	As above
	Y   N	Tree/Scrub removal by uprooting	As above
	Y   N	Scrub burning in bonfires	Intense heat at point source, damage to artefacts and alteration of soil profile
<b>VEGETATION</b>	Y   N	Root damage - trees and scrub (especially where deep rooted - heavy crowns)	Damage/disturbance of artefacts
	Y   N	Tree windthrow	Potential massive damage/disturbance
	Y   N	Scrub encroachment - bracken, gorse, rhodedendron, thorn	Root or rhizome damage/disturbance (bracken least significant)
<b>WEATHER/SITE FACTORS</b>	Y   N	High rainfall/windspeeds - exposure	Greater erosion risk than level, non exposed site
	Y   N	High gradient	

CAMBRIAN MOUNTAINS ESA HISTORIC MONITORING RESURVEY 1999

A

OS 1:10,000 SHEET: SN/ <del>SO</del> /SH 96		GRID REF: SN/ <del>SO</del> /SH 9190 6599	
PRN: 4198 SITE NAME: Dol Fola Dyke			
AIR PHOTO No: 649-62		LANDSCAPE TYPE: Ib	
No GROUND PHOTOS: 6			
DATE RESURVEYED: 23-6-99		RESURVEYED BY: W. Somerfield	

IF CHANGES TO ANY OF THE FOLLOWING HAVE OCCURRED SINCE THE BASELINE, DETAIL THESE CHANGES IN THE APPROPRIATE SECTION OF THE RESURVEY PROFORMA.

A:CHANGES TO ACCESS?

B:CHANGES TO LANDCOVER

C:CHANGES TO LAND MANAGEMENT

D:CHANGES IN DESCRIPTION/CONDITION OF MONUMENT

E:CHANGES IN POTENTIALLY THREATENING FACTORS

F:CHANGE IN RATE OF DECAY

NO <input checked="" type="checkbox"/>	YES
NO <input checked="" type="checkbox"/>	YES
NO <input checked="" type="checkbox"/>	YES
NO <input checked="" type="checkbox"/>	YES
NO <input checked="" type="checkbox"/>	YES
NO <input checked="" type="checkbox"/>	YES

A: ACCESS

Checked + Qcld

G. Atopwood 24/6/99

CAMBRIAN MOUNTAINS ESA HISTORIC MONITORING RESURVEY 1999

PRN

B:LANDCOVER

SITE:

HALO:

C:LAND MANAGEMENT

SITE:

HALO:

D:DESCRIPTION/CONDITION OF MONUMENT



E: POTENTIALLY THREATENING FACTORS (see table 1)

F

RATE OF DECAY:

STABLE

SLOW

RAPID

CONTINUED?

YES

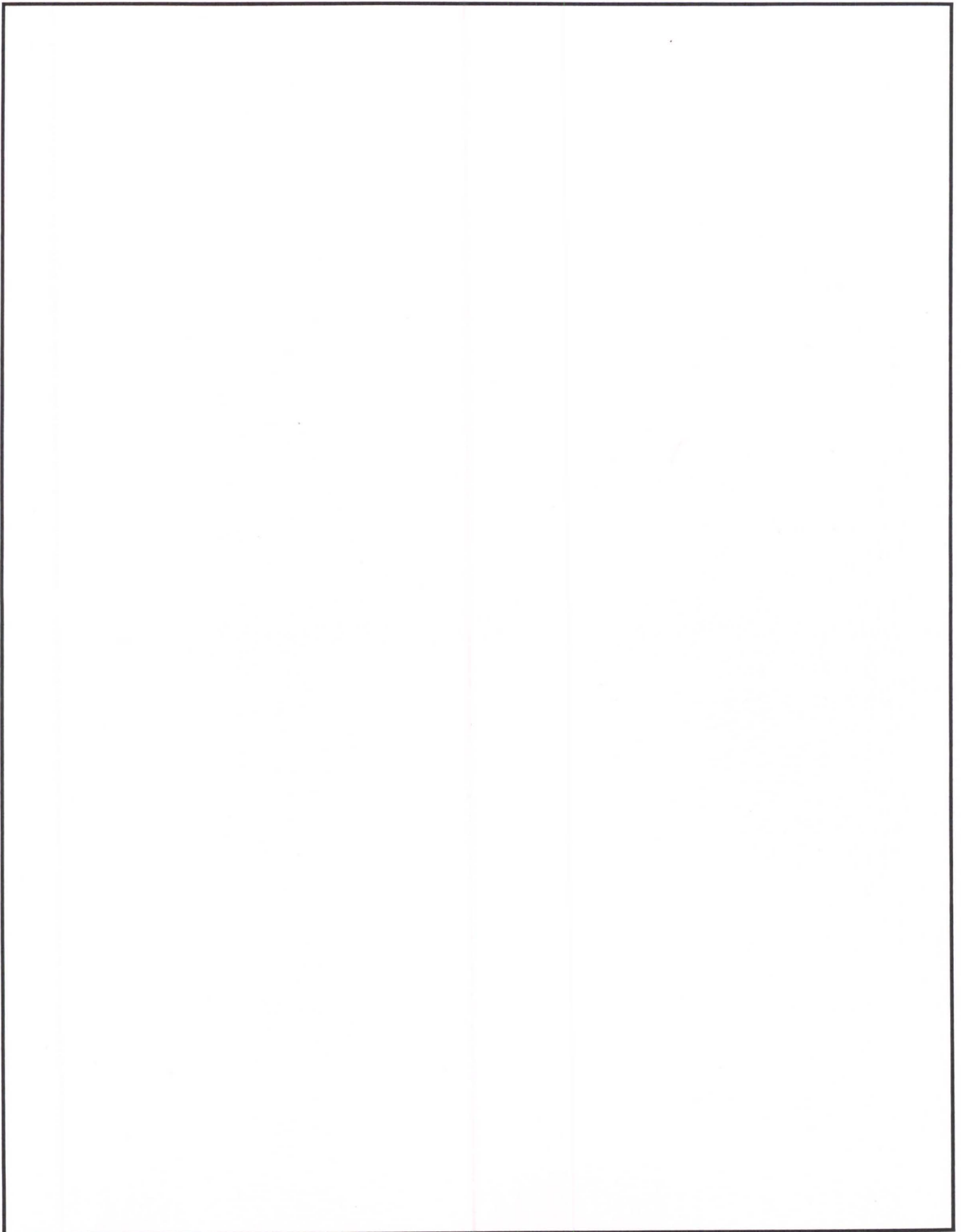
NO



CAMBRIAN MOUNTAINS ESA, HISTORIC MONITORING RESURVEY 1999

SUPPLEMENTARY NOTES TO FIELD SURVEYS

PAGE..... OF.... PRN:



POTENTIALLY THREATENING FACTORS				
AGENT	PRESENT		ACTION	SIGNIFICANCE
ANIMALS	Y	N	Burrowing - badgers, foxes, rabbits	Damage/disturbance to underground artefacts
	Y	N	Overgrazing - cattle, horses, sheep	Loss of vegetation cover/soil
	<del>Y</del>	N	Poaching - cattle, horses, sheep	Damage to vegetation cover, leading to erosion
	Y	N	Rubbing point/erosion focus point - cattle, horses, sheep	As above, plus possible damage to upstanding features
HUMAN	Y	N	Demolition or removal of monument	Active removal of artefacts/monument
	Y	N	Rubbish dumping	Infilling/contamination
	Y	N	Trampling/poaching - on footpaths/desire lines	Loss of vegetation cover/soil damage resulting in erosion
	Y	N	Mountain bikes/Motorcross etc	As above
	Y	N	Deep ploughing/Drainage works/Building	Damage/disturbance of artefacts
	Y	N	Shallow cultivation/reseeds	As above
	Y	N	Tree/Scrub removal by uprooting	As above
	Y	N	Scrub burning in bonfires	Intense heat at point source, damage to artefacts and alteration of soil profile
VEGETATION	Y	N	Root damage - trees and scrub (especially where deep rooted - heavy crowns)	Damage/disturbance of artefacts
	Y	N	Tree windthrow	Potential massive damage/disturbance
	Y	N	Scrub encroachment - bracken, gorse, rhodedendron, thorn	Root or rhizome damage/disturbance (bracken least significant)
WEATHER/SITE FACTORS	Y	N	High rainfall/windspeeds - exposure	Greater erosion risk than level, non exposed site
	Y	N	High gradient	