

Tweed-rhio-draen

(199)

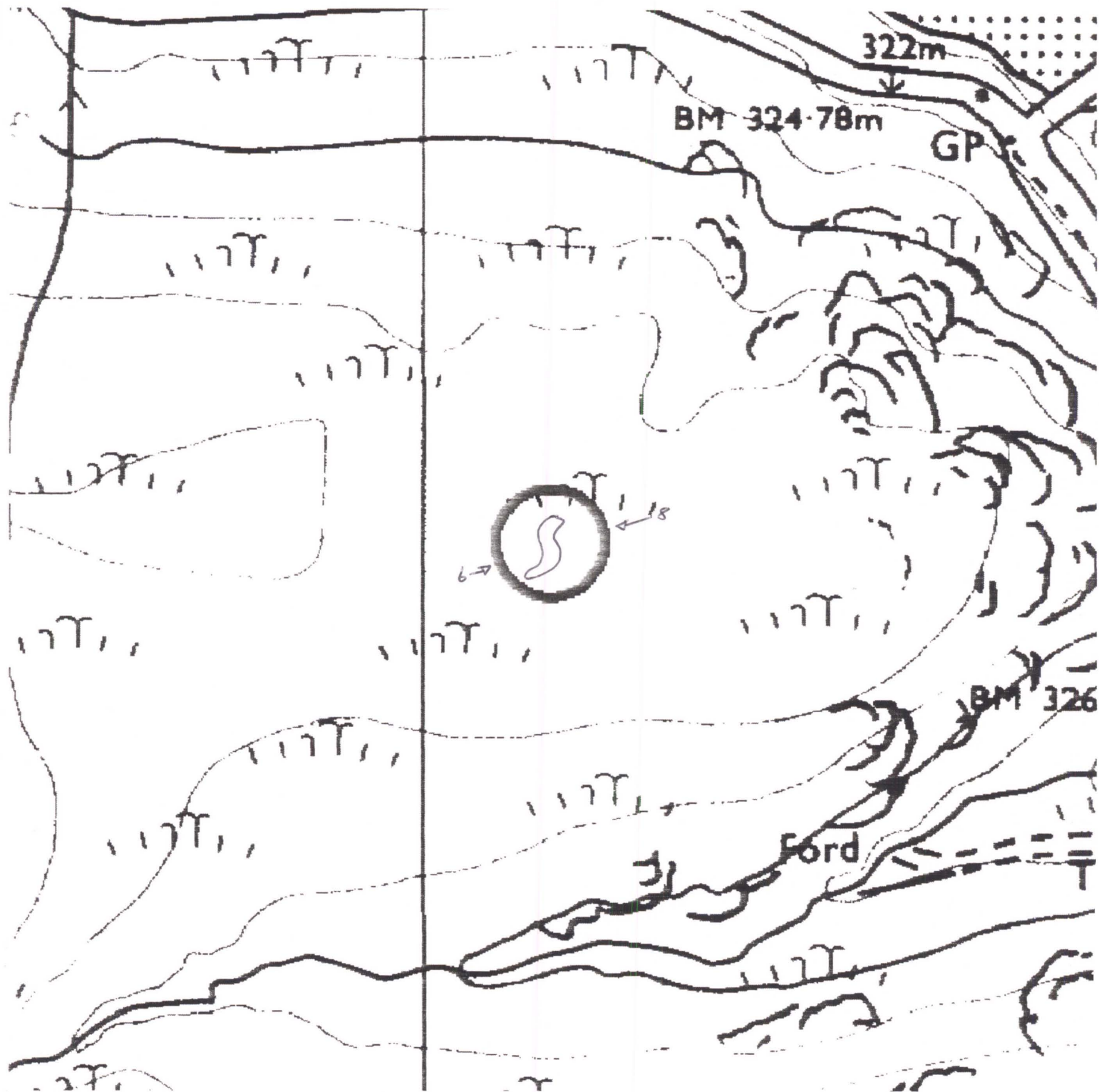
Px 199

The The The The

3734

Cambrian Mountains ESA

8906 6842



# CAMBRIAN MOUNTAINS ESA, HISTORIC MONITORING

## BASELINE 1995

A

OS 1:1000 SHEET: <del>SM</del> /SN 86	GRID REF: <del>SM</del> /SN 8906 6842
PRN: 3734 SITE NAME: Cefn Esgair Enclave	
AIR PHOTO No	LANDSCAPE TYPE: Ic
No GROUND PHOTOS:	
DATE SURVEYED: 19/10/95	SURVEYED BY: G. Hopwood
ACCESS:	

B

LAND COVER:
SITE: Grassy sward - Agrostis / Fescue / Mowdus. Juncus
HALO: Grassy sward - as above + bracken, + Eriophorum.

# CAMBRIAN MOUNTAINS ESA, HISTORIC MONITORING

BASELINE 1995

PRN 3734

C

## LAND MANAGEMENT:

**SITE:** Rough grazing - sheep present when surveyed.

**HALO:**

D

## DESCRIPTION/CONDITION OF MONUMENT:

S shaped hollow with raised banks.  
9m long x 4.5/5 m across. Central depression  
50cm below ground surface. Banks 30-40 cm  
high. Complete grass cover with loose stones  
showing. Sheep scrapes in banks.  
Used as shelter by sheep - droppings in large  
amount.

E

## POTENTIALLY THREATENING FACTORS: (see Table 1)

Sheep grazing + damage from trampling. Grass is  
grazed lightly on feature and sheep scrapes  
are being created for shelter in the banks.  
Fairly exposed to wind + rain. Overall in

F

**RATE OF DECAY:**

STABLE

SLOW

RAPID

CONTINUED?

YES

NO

# CAMBRIAN MOUNTAINS ESA. HISTORIC MONITORING

BASELINE 1995

SUPPLEMENTARY NOTES TO FIELD SURVEYS

PAGE.... OF.... PRN: 3734

E/ good condition and not under great threat.  
Potential  
but site  $\Delta N \downarrow^{3/4}$  problem with bracken invasion  
is clear at present.

D/

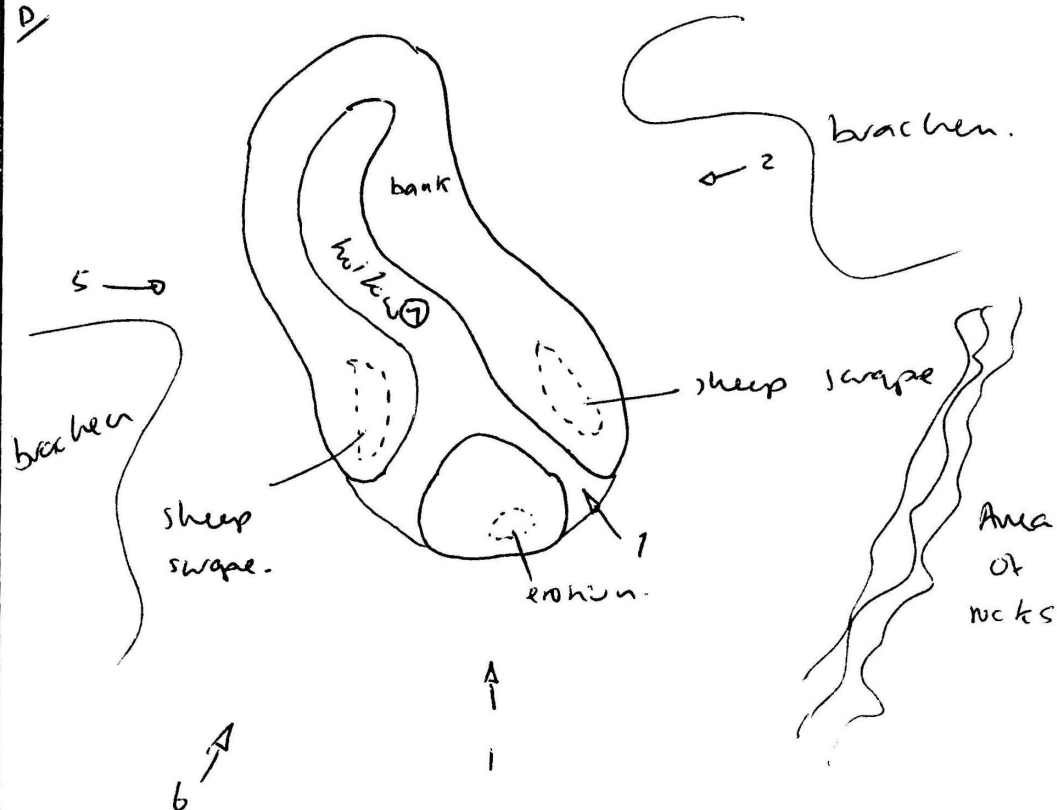


TABLE 1

## CAMBRIAN MOUNTAINS ESA, HISTORIC MONITORING, BASELINE 1995

PRN

POTENTIALLY THREATENING FACTORS				
AGENT	PRESENT		ACTION	SIGNIFICANCE
ANIMALS	Y	N	Burrowing - badgers, foxes, rabbits	Damage/disturbance to underground artefacts
	Y	N	Overgrazing - cattle, horses, sheep	Loss of vegetation cover/soil
	Y	N	Poaching - cattle, horses, sheep	Damage to vegetation cover, leading to erosion
	Y	N	Rubbing point/erosion focus point - cattle, horses, sheep	As above, plus possible damage to upstanding features
HUMAN	Y	N	Demolition or removal of monument	Active removal of artefacts/monument
	Y	N	Rubbish dumping	Infilling/contamination
	Y	N	Trampling/poaching - on footpaths/desire lines	Loss of vegetation cover/soil damage resulting in erosion
	Y	N	Mountain bikes/Motorcross etc	As above
	Y	N	Deep ploughing/Drainage works/Building	Damage/disturbance of artefacts
	Y	N	Shallow cultivation/reseeds	As above
	Y	N	Tree/Scrub removal by uprooting	As above
	Y	N	Scrub burning in bonfires	Intense heat at point source, damage to artefacts and alteration of soil profile
VEGETATION	Y	N	Root damage - trees and scrub (especially where deep rooted - heavy crowns)	Damage/disturbance of artefacts
	Y	N	Tree windthrow	Potential massive damage/disturbance
	Y	N	Scrub encroachment - bracken, gorse, rhododendron, thorn	Root or rhizome damage/disturbance (bracken least significant)
WEATHER/SITE FACTORS	Y	N	High rainfall/windspeeds - exposure	Greater erosion risk than level, non exposed site
	Y	N	High gradient	

# CAMBRIAN MOUNTAINS ESA HISTORIC MONITORING RESURVEY 1999

A

OS 1:10,000 SHEET: SN/ <del>SO</del> /SH 86		GRID REF: SN/ <del>SO</del> /SH 8906 6842	
PRN: 3734 SITE NAME: CEFN ESQAIR ENCLOSURE			
AIR PHOTO No: 649/96		LANDSCAPE TYPE: Ic	
No GROUND PHOTOS: 8			
DATE RESURVEYED: 21/6/99		RESURVEYED BY: W. Somerfield	

IF CHANGES TO ANY OF THE FOLLOWING HAVE OCCURRED SINCE THE BASELINE, DETAIL THESE CHANGES IN THE APPROPRIATE SECTION OF THE RESURVEY PROFORMA.

A:CHANGES TO ACCESS?

B:CHANGES TO LANDCOVER

C:CHANGES TO LAND MANAGEMENT

D:CHANGES IN DESCRIPTION/CONDITION OF MONUMENT

E:CHANGES IN POTENTIALLY THREATENING FACTORS

F:CHANGE IN RATE OF DECAY

NO <input checked="" type="checkbox"/>	YES
NO <input checked="" type="checkbox"/>	YES
NO <input checked="" type="checkbox"/>	YES
NO <input checked="" type="checkbox"/>	YES
NO <input checked="" type="checkbox"/>	YES
NO <input checked="" type="checkbox"/>	YES

A: ACCESS

Checkwell + acid  
Satchwood 22/6/99

CAMBRIAN MOUNTAINS ESA HISTORIC MONITORING RESURVEY 1999

PRN

B:LANDCOVER

SITE:

HALO:

C:LAND MANAGEMENT

SITE:

HALO:

D:DESCRIPTION/CONDITION OF MONUMENT

E: POTENTIALLY THREATENING FACTORS (see table 1)

F

RATE OF DECAY:

STABLE

SLOW

RAPID

CONTINUED?

YES

NO



CAMBRIAN MOUNTAINS ESA, HISTORIC MONITORING RESURVEY 1999

SUPPLEMENTARY NOTES TO FIELD SURVEYS

PAGE..... OF.... PRN:

POTENTIALLY THREATENING FACTORS				
AGENT	PRESENT		ACTION	SIGNIFICANCE
ANIMALS	Y	N	Burrowing - badgers, foxes, rabbits	Damage/disturbance to underground artefacts
	Y	N	Overgrazing - cattle, horses, sheep	Loss of vegetation cover/soil
	Y	N	Poaching - cattle, horses, sheep	Damage to vegetation cover, leading to erosion
	Y	N	Rubbing point/erosion focus point - cattle, horses, sheep	As above, plus possible damage to upstanding features
HUMAN	Y	N	Demolition or removal of monument	Active removal of artefacts/monument
	Y	N	Rubbish dumping	Infilling/contamination
	Y	N	Trampling/poaching - on footpaths/desire lines	Loss of vegetation cover/soil damage resulting in erosion
	Y	N	Mountain bikes/Motorcross etc	As above
	Y	N	Deep ploughing/Drainage works/Building	Damage/disturbance of artefacts
	Y	N	Shallow cultivation/reseeds	As above
	Y	N	Tree/Scrub removal by uprooting	As above
	Y	N	Scrub burning in bonfires	Intense heat at point source, damage to artefacts and alteration of soil profile
VEGETATION	Y	N	Root damage - trees and scrub (especially where deep rooted - heavy crowns)	Damage/disturbance of artefacts
	Y	N	Tree windthrow	Potential massive damage/disturbance
	Y	N	Scrub encroachment - bracken, gorse, rhodedendron, thorn	Root or rhizome damage/disturbance (bracken least significant)
WEATHER/SITE FACTORS	Y	N	High rainfall/windspeeds - exposure	Greater erosion risk than level, non exposed site
	Y	N	High gradient	