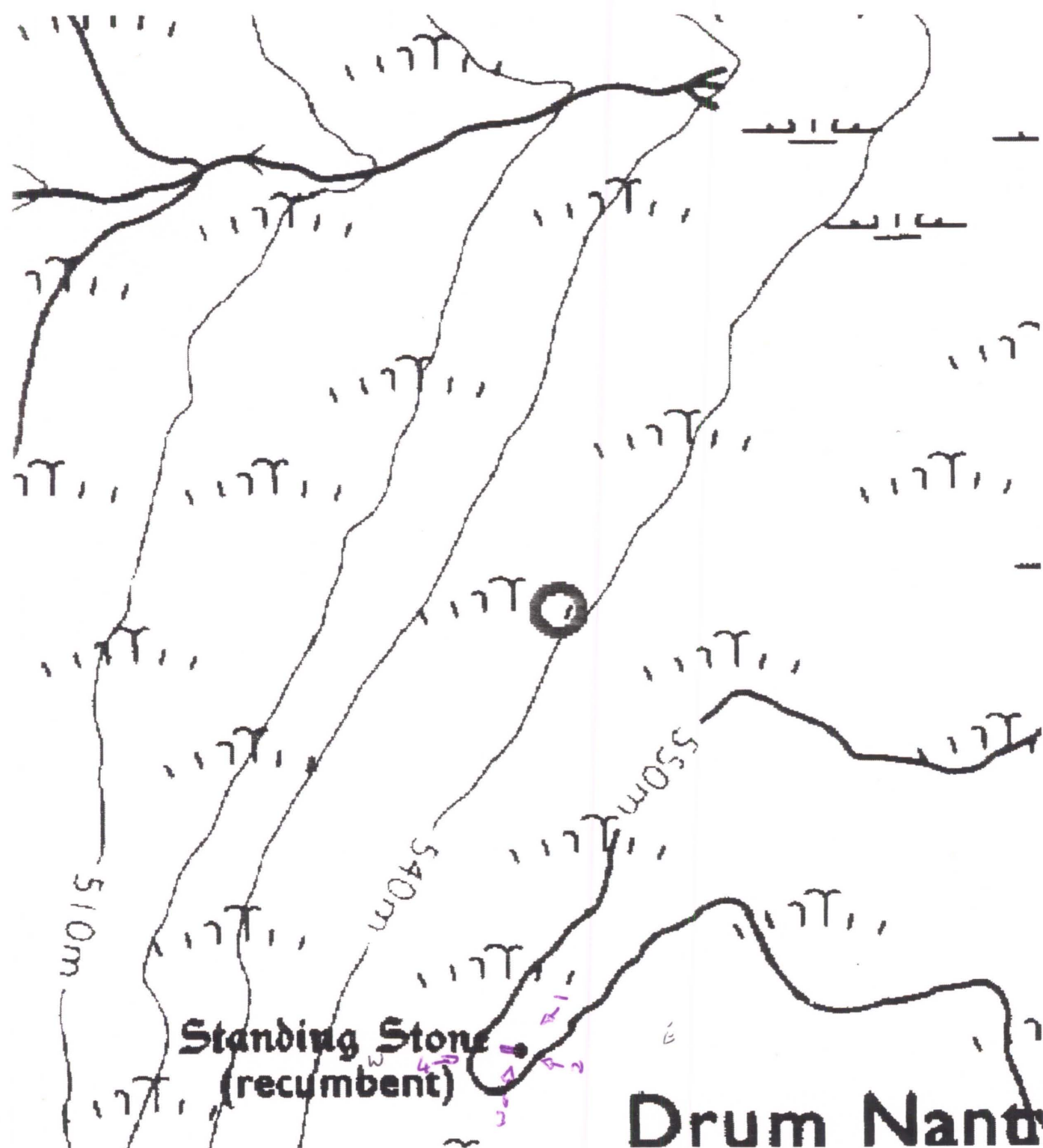


3438

Cambrian Mountains ESA SN 8343 5960



CAMBRIAN MOUNTAINS ESA, HISTORIC MONITORING

BASELINE 1995

A

| | |
|----------------------------|--------------------|
| OS 1:10000 SHEET: SO/SH/SN | GRID REF: SO/SH/SN |
| PRN: 21.28 SITE NAME: | |
| AIR PHOTO No 648 - 276 | LANDSCAPE TYPE: |
| No GROUND PHOTOS: | |
| DATE SURVEYED: 24/11/95 | SURVEYED BY: |
| ACCESS: | |

B

| |
|-------------------|
| LAND COVER: |
| SITE: Gwynn SURG. |
| HALO: |

CAMBRIAN MOUNTAINS ESA, HISTORIC MONITORING

BASELINE 1995

PRN

C

LAND MANAGEMENT:

SITE: Rough quarry.

HALO:

D

DESCRIPTION/CONDITION OF MONUMENT:

Roughly rectangular solid block of granite.
Now dismounted. Approx 2m in length x 70cm
wide x 60 cm thick. Sharp square corner
lowered side - angled area.

E

POTENTIALLY THREATENING FACTORS: (see Table 1)

Footpath runs next to monument.
V. exposed location.
Sheep rubbing point?

F

RATE OF DECAY:

STABLE

SLOW

RAPID

CONTINUED?

YES

NO

CAMBRIAN MOUNTAINS ESA, HISTORIC MONITORING

BASELINE 1995

SUPPLEMENTARY NOTES TO FIELD SURVEYS

PAGE..... OF..... PRN:



Several small pieces of growth around monument
result of weathering?

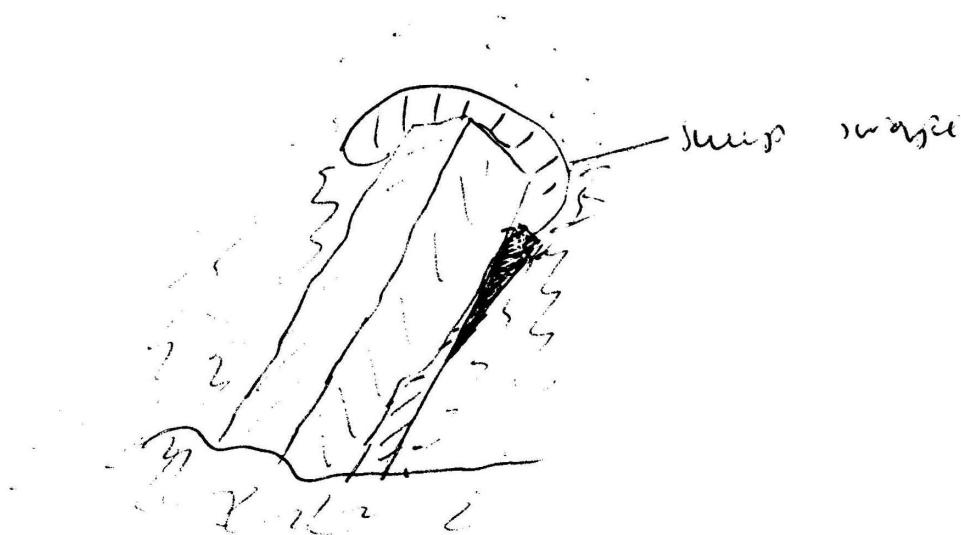


TABLE 1

CAMBRIAN MOUNTAINS ESA, HISTORIC MONITORING, BASELINE 1995

PRN

| POTENTIALLY THREATENING FACTORS | | | |
|--|----------------|---|--|
| AGENT | PRESENT | ACTION | SIGNIFICANCE |
| ANIMALS | Y N | Burrowing - badgers, foxes, rabbits | Damage/disturbance to underground artefacts |
| | Y N | Overgrazing - cattle, horses, sheep | Loss of vegetation cover/soil |
| | Y N | Poaching - cattle, horses, sheep | Damage to vegetation cover, leading to erosion |
| | Y N | Rubbing point/erosion focus point - cattle, horses, sheep | As above, plus possible damage to upstanding features |
| HUMAN | Y N | Demolition or removal of monument | Active removal of artefacts/monument |
| | Y N | Rubbish dumping | Infilling/contamination |
| | Y N | Trampling/poaching - on footpaths/desire lines | Loss of vegetation cover/soil damage resulting in erosion |
| | Y N | Mountain bikes/Motorcross etc | As above |
| | Y N | Deep ploughing/Drainage works/Building | Damage/disturbance of artefacts |
| | Y N | Shallow cultivation/reseeds | As above |
| | Y N | Tree/Scrub removal by uprooting | As above |
| | Y N | Scrub burning in bonfires | Intense heat at point source, damage to artefacts and alteration of soil profile |
| VEGETATION | Y N | Root damage - trees and scrub (especially where deep rooted - heavy crowns) | Damage/disturbance of artefacts |
| | Y N | Tree windthrow | Potential massive damage/disturbance |
| | Y N | Scrub encroachment - bracken, gorse, rhodedendron, thorn | Root or rhizome damage/disturbance (bracken least significant) |
| WEATHER/SITE FACTORS | Y N | High rainfall/windspeeds - exposure | Greater erosion risk than level, non exposed site |
| | Y N | High gradient | |

CAMBRIAN MOUNTAINS ESA HISTORIC MONITORING RESURVEY 1999

A

| | | | |
|--|--|------------------------------|--|
| OS 1:10,000 SHEET: SN/SO/SH 85 | | GRID REF: SN/SO/SH 8343 5960 | |
| PRN: 3438 SITE NAME: Drum Nant y Gortan Stone. | | | |
| AIR PHOTO No: 648-276 | | LANDSCAPE TYPE: Ib | |
| No GROUND PHOTOS: 4 | | | |
| DATE RESURVEYED: 16/6/99 | | RESURVEYED BY: W. Somerfield | |

IF CHANGES TO ANY OF THE FOLLOWING HAVE OCCURRED SINCE THE BASELINE, DETAIL THESE CHANGES IN THE APPROPRIATE SECTION OF THE RESURVEY PROFORMA.

A:CHANGES TO ACCESS?

B:CHANGES TO LANDCOVER

C:CHANGES TO LAND MANAGEMENT

D:CHANGES IN DESCRIPTION/CONDITION OF MONUMENT

E:CHANGES IN POTENTIALLY THREATENING FACTORS

F:CHANGE IN RATE OF DECAY

| | |
|--|-----|
| NO <input checked="" type="checkbox"/> | YES |
| NO <input checked="" type="checkbox"/> | YES |
| NO <input checked="" type="checkbox"/> | YES |
| NO <input checked="" type="checkbox"/> | YES |
| NO <input checked="" type="checkbox"/> | YES |
| NO <input checked="" type="checkbox"/> | YES |

A: ACCESS

Access is the same. However the Forest Enterprise is Ken Rattrap (01970 890500) or Brenda Evans (01550 720394) for access to their land.

checked + Q'd

G. Atkinson. 17/6/99

CAMBRIAN MOUNTAINS ESA HISTORIC MONITORING RESURVEY 1999

PRN

B:LANDCOVER

SITE:

HALO:

C:LAND MANAGEMENT

SITE:

HALO:

D:DESCRIPTION/CONDITION OF MONUMENT

E: POTENTIALLY THREATENING FACTORS (see table 1)

F

RATE OF DECAY:

STABLE

SLOW

RAPID

CONTINUED?

YES

NO

CAMBRIAN MOUNTAINS ESA, HISTORIC MONITORING RESURVEY 1999

SUPPLEMENTARY NOTES TO FIELD SURVEYS

PAGE..... OF.... PRN:

| POTENTIALLY THREATENING FACTORS | | | |
|---------------------------------|--------------------------------------|---|--|
| AGENT | PRESENT | ACTION | SIGNIFICANCE |
| ANIMALS | Y N | Burrowing - badgers, foxes, rabbits | Damage/disturbance to underground artefacts |
| | Y N | Overgrazing - cattle, horses, sheep | Loss of vegetation cover/soil |
| | Y N | Poaching - cattle, horses, sheep | Damage to vegetation cover, leading to erosion |
| | <input checked="" type="radio"/> Y N | Rubbing point/erosion focus point - cattle, horses, sheep | As above, plus possible damage to upstanding features |
| HUMAN | Y N | Demolition or removal of monument | Active removal of artefacts/monument |
| | Y N | Rubbish dumping | Infilling/contamination |
| | <input checked="" type="radio"/> Y N | Trampling/poaching - on footpaths/desire lines | Loss of vegetation cover/soil damage resulting in erosion |
| | Y N | Mountain bikes/Motorcross etc | As above |
| | Y N | Deep ploughing/Drainage works/Building | Damage/disturbance of artefacts |
| | Y N | Shallow cultivation/reseeds | As above |
| | Y N | Tree/Scrub removal by uprooting | As above |
| | Y N | Scrub burning in bonfires | Intense heat at point source, damage to artefacts and alteration of soil profile |
| VEGETATION | Y N | Root damage - trees and scrub (especially where deep rooted - heavy crowns) | Damage/disturbance of artefacts |
| | Y N | Tree windthrow | Potential massive damage/disturbance |
| | Y N | Scrub encroachment - bracken, gorse, rhododendron, thorn | Root or rhizome damage/disturbance (bracken least significant) |
| WEATHER/SITE FACTORS | <input checked="" type="radio"/> Y N | High rainfall/windspeeds - exposure | Greater erosion risk than level, non exposed site |
| | Y N | High gradient | |