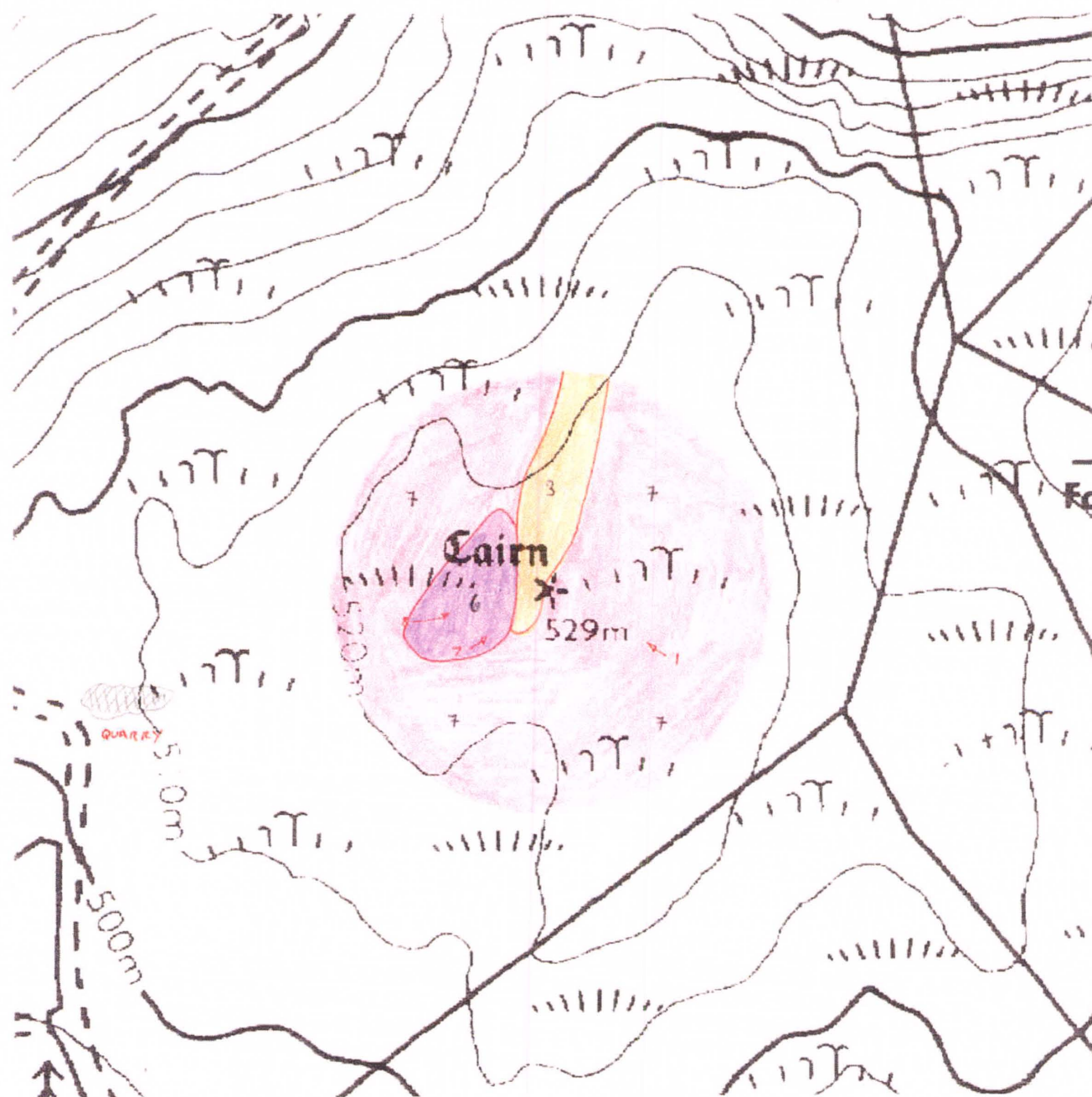


1354\1355

Cambrian Mountains ESA

7643 9431



CAMBRIAN MOUNTAINS ESA, HISTORIC MONITORING

Pays

BASELINE 1995

A

OS 1:1000 SHEET: SM /SN 79	GRID REF: SM /SN 7643 9431
PRN: 1354 SITE NAME: Carneddau Hafod Wnnog.	
AIR PHOTO No 650-91	LANDSCAPE TYPE: IIa
No GROUND PHOTOS: 8	
DATE SURVEYED: 25/10/95	SURVEYED BY: G. Hopwood
<p>ACCESS: Land owned by Mr A. Jones, Cwmgrhanadr fm, Glaspoll. Tel: 01654 702223.</p> <p>Access via track from farm. (get key from above)</p>	

B

<p>LAND COVER:</p> <p>SITE: SNRG - Calluna / Vaccinium with heath.</p> <p>HALO: Similar to above. Boggy SNRG with mown pools on flatter areas.</p>
--

CAMBRIAN MOUNTAINS ESA. HISTORIC MONITORING

BASELINE 1995

PRN

C

LAND MANAGEMENT:

SITE: Rough grazing - unimproved woodland vegetation.

HALO: As above.

D

DESCRIPTION/CONDITION OF MONUMENT: A natural rocky mound covered with calluna / vaccinium and nardus with the cairn built on top. Not immediately obvious as such because of continuous vegetation cover which makes the natural landform and the cairn blend into each other.

Natural mound some 2m high, ovoid in shape

E

POTENTIALLY THREATENING FACTORS: (see Table 1)

Very exposed position - highest point in area at 500m. Vegetation cover is however good and there appears little damage from livestock. Monument is probably stable at present and under little threat.

F

RATE OF DECAY:

STABLE

SLOW

RAPID

CONTINUED?

YES

NO

CAMBRIAN MOUNTAINS ESA. HISTORIC MONITORING

BASELINE 1995

SUPPLEMENTARY NOTES TO FIELD SURVEYS

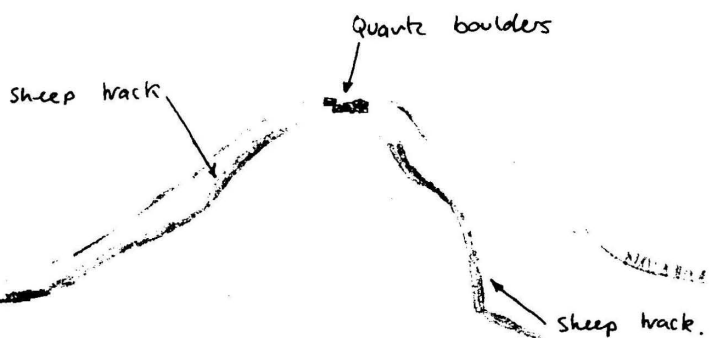
PAGE..... OF..... PRN:

D/ The longest axis being 18-20m. The cairn itself is some 4-6m in diameter with a height of less than 1 metre.

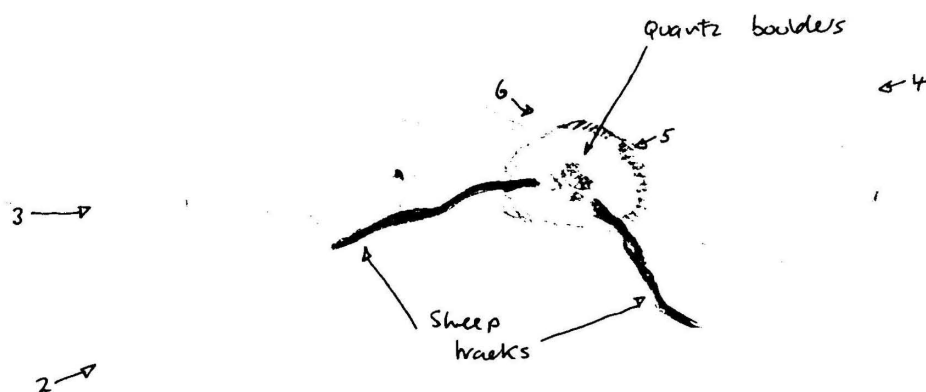
Hollow on top of cairn contains quartz boulders.

Sheep tracks obvious up two faces of monument.

Second mound - cairn site ??



view looking West.



Plan view

Photo 1

Photos 7/8 - See main map.

TABLE 1

CAMBRIAN MOUNTAINS ESA, HISTORIC MONITORING, BASELINE 1995

PRN

POTENTIALLY THREATENING FACTORS				
AGENT	PRESENT		ACTION	SIGNIFICANCE
ANIMALS	Y	N	Burrowing - badgers, foxes, rabbits	Damage/disturbance to underground artefacts
	Y	N	Overgrazing - cattle, horses, sheep	Loss of vegetation cover/soil
	Y	N	Poaching - cattle, horses, sheep	Damage to vegetation cover, leading to erosion
	Y	N	Rubbing point/erosion focus point - cattle, horses, sheep	As above, plus possible damage to upstanding features
HUMAN	Y	N	Demolition or removal of monument	Active removal of artefacts/monument
	Y	N	Rubbish dumping	Infilling/contamination
	Y	N	Trampling/poaching - on footpaths/desire lines	Loss of vegetation cover/soil damage resulting in erosion
	Y	N	Mountain bikes/Motorcross etc	As above
	Y	N	Deep ploughing/Drainage works/Building	Damage/disturbance of artefacts
	Y	N	Shallow cultivation/reseeds	As above
	Y	N	Tree/Scrub removal by uprooting	As above
	Y	N	Scrub burning in bonfires	Intense heat at point source, damage to artefacts and alteration of soil profile
VEGETATION	Y	N	Root damage - trees and scrub (especially where deep rooted - heavy crowns)	Damage/disturbance of artefacts
	Y	N	Tree windthrow	Potential massive damage/disturbance
	Y	N	Scrub encroachment - bracken, gorse, rhodedendron, thorn	Root or rhizome damage/disturbance (bracken least significant)
WEATHER/SITE FACTORS	Y	N	High rainfall/windspeeds - exposure	Greater erosion risk than level, non exposed site
	Y	N	High gradient	

CAMBRIAN MOUNTAINS ESA HISTORIC MONITORING RESURVEY 1999

A

OS 1:10,000 SHEET: SN/ SO /SH 79		GRID REF: SN/ SO /SH 7643 9431	
PRN: 1354 SITE NAME: Carneddau Hafod Wnnog.			
AIR PHOTO No: 650-91		LANDSCAPE TYPE: II a	
No GROUND PHOTOS: 8			
DATE RESURVEYED: 14/6/99		RESURVEYED BY: W. Somerfield	

IF CHANGES TO ANY OF THE FOLLOWING HAVE OCCURRED SINCE THE BASELINE, DETAIL THESE CHANGES IN THE APPROPRIATE SECTION OF THE RESURVEY PROFORMA.

A:CHANGES TO ACCESS?

B:CHANGES TO LANDCOVER

C:CHANGES TO LAND MANAGEMENT

D:CHANGES IN DESCRIPTION/CONDITION OF MONUMENT

E:CHANGES IN POTENTIALLY THREATENING FACTORS

F:CHANGE IN RATE OF DECAY

NO ✓	YES
NO ✓	YES
NO ✓	YES
NO ✓	YES
NO ✓	YES
NO ✓	YES

A: ACCESS

Checked + Qc'd
GABtopswael 15/6/99

CAMBRIAN MOUNTAINS ESA HISTORIC MONITORING RESURVEY 1999

PRN

B:LANDCOVER

SITE:

HALO:

C:LAND MANAGEMENT

SITE:

HALO:

D:DESCRIPTION/CONDITION OF MONUMENT

E: POTENTIALLY THREATENING FACTORS (see table 1)

F

RATE OF DECAY:

STABLE

SLOW

RAPID

CONTINUED?

YES

NO

CAMBRIAN MOUNTAINS ESA, HISTORIC MONITORING RESURVEY 1999

SUPPLEMENTARY NOTES TO FIELD SURVEYS

PAGE..... OF.... PRN:

POTENTIALLY THREATENING FACTORS			
AGENT	PRESENT		SIGNIFICANCE
ANIMALS	Y	N	Burrowing - badgers, foxes, rabbits
	Y	N	Overgrazing - cattle, horses, sheep
	Y	N	Poaching - cattle, horses, sheep
	Y	N	Rubbing point/erosion focus point - cattle, horses, sheep
HUMAN	Y	N	Demolition or removal of monument
	Y	N	Rubbish dumping
	Y	N	Trampling/poaching - on footpaths/desire lines
	Y	N	Mountain bikes/Motorcross etc
	Y	N	Deep ploughing/Drainage works/Building
	Y	N	Shallow cultivation/reseeds
	Y	N	Tree/Scrub removal by uprooting
	Y	N	Scrub burning in bonfires
VEGETATION	Y	N	Root damage - trees and scrub (especially where deep rooted - heavy crowns)
	Y	N	Tree windthrow
	Y	N	Scrub encroachment - bracken, gorse, rhodedendron, thorn
WEATHER/SITE FACTORS	<input checked="" type="radio"/> Y	N	High rainfall/windspeeds - exposure
	Y	N	High gradient