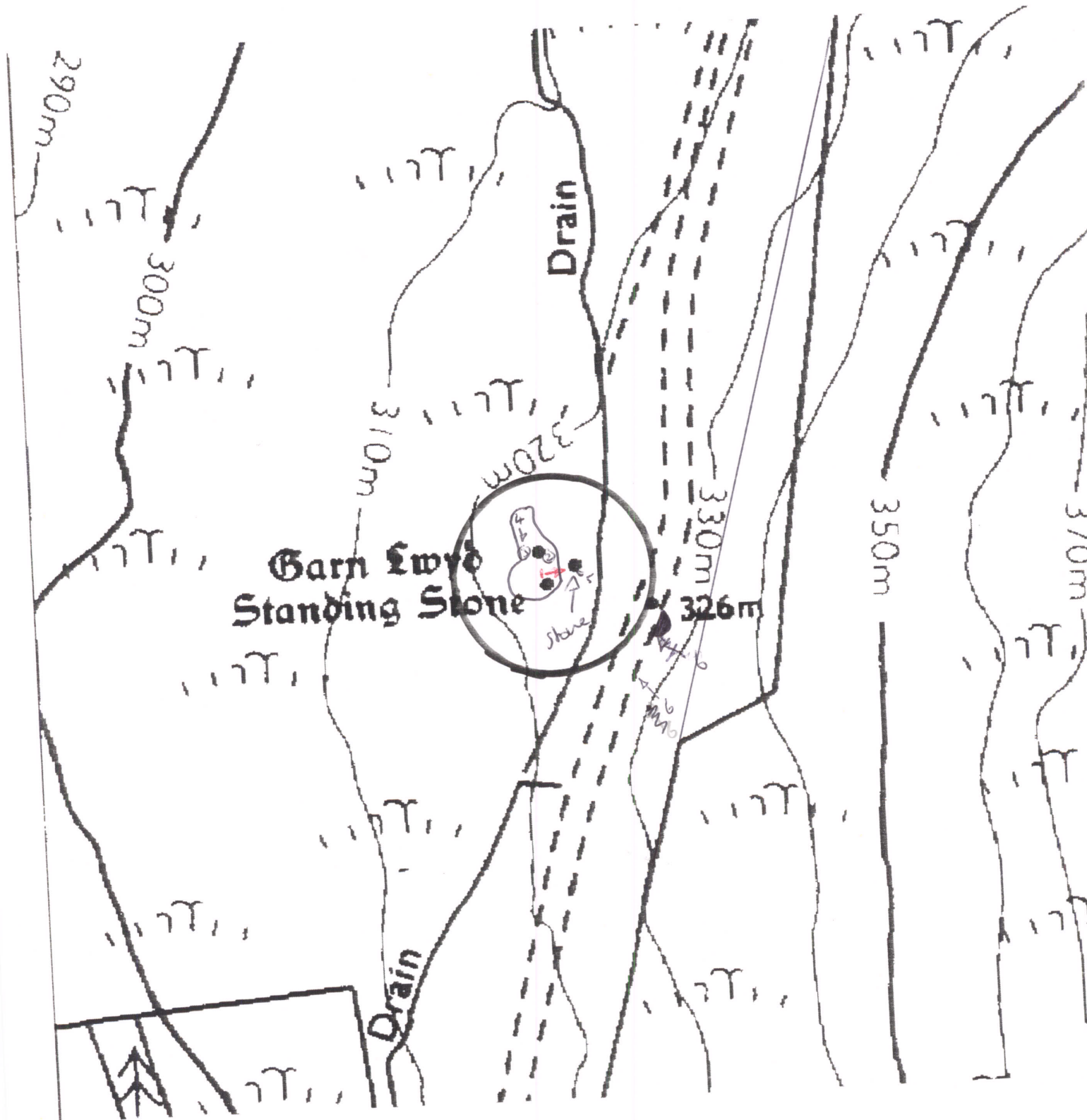


5625\5619

Cambrian Mountains ESA

7524 8335



CAMBRIAN MOUNTAINS ESA, HISTORIC MONITORING

BASELINE 1995

A

OS 1:1000 SHEET: <i>SM/SN 18</i>	GRID REF: <i>SM/SN 7524 8335</i>
PRN: <i>5625</i> / SITE NAME: <i>5619</i>	
AIR PHOTO No	LANDSCAPE TYPE:
No GROUND PHOTOS: <i>6</i>	
DATE SURVEYED: <i>25/10/95</i>	SURVEYED BY:
ACCESS:	

B

LAND COVER:
SITE: <i>Semi-improved grass with Juncus + nardus.</i>
HALO: <i>snags, nardus / whitea / Juncus.</i>

CAMBRIAN MOUNTAINS ESA. HISTORIC MONITORING

BASELINE 1995

PRN

C

LAND MANAGEMENT:

SITE: Grazing (rough) - cattle on site when visited.

HALO:

D

DESCRIPTION/CONDITION OF MONUMENT:

A single standing stone - 60 cm high. Adjacent to very green - almost improved looking patch of disturbed rocky ground. No easily recognisable features although there is a circular depression ~ 1.5 m in diameter which may have been a cairn. Area grazed more than halo and there is probably used as a rubbing point.

E

POTENTIALLY THREATENING FACTORS: (see Table 1)

Definite risk of damage by livestock through poaching and use of stone as rubbing point. Fairly exposed location. Risk of land improvement?

F

RATE OF DECAY:

STABLE

SLOW

RAPID

CONTINUED?

YES

NO

CAMBRIAN MOUNTAINS ESA. HISTORIC MONITORING

BASELINE 1995

SUPPLEMENTARY NOTES TO FIELD SURVEYS

PAGE..... OF..... PRN:

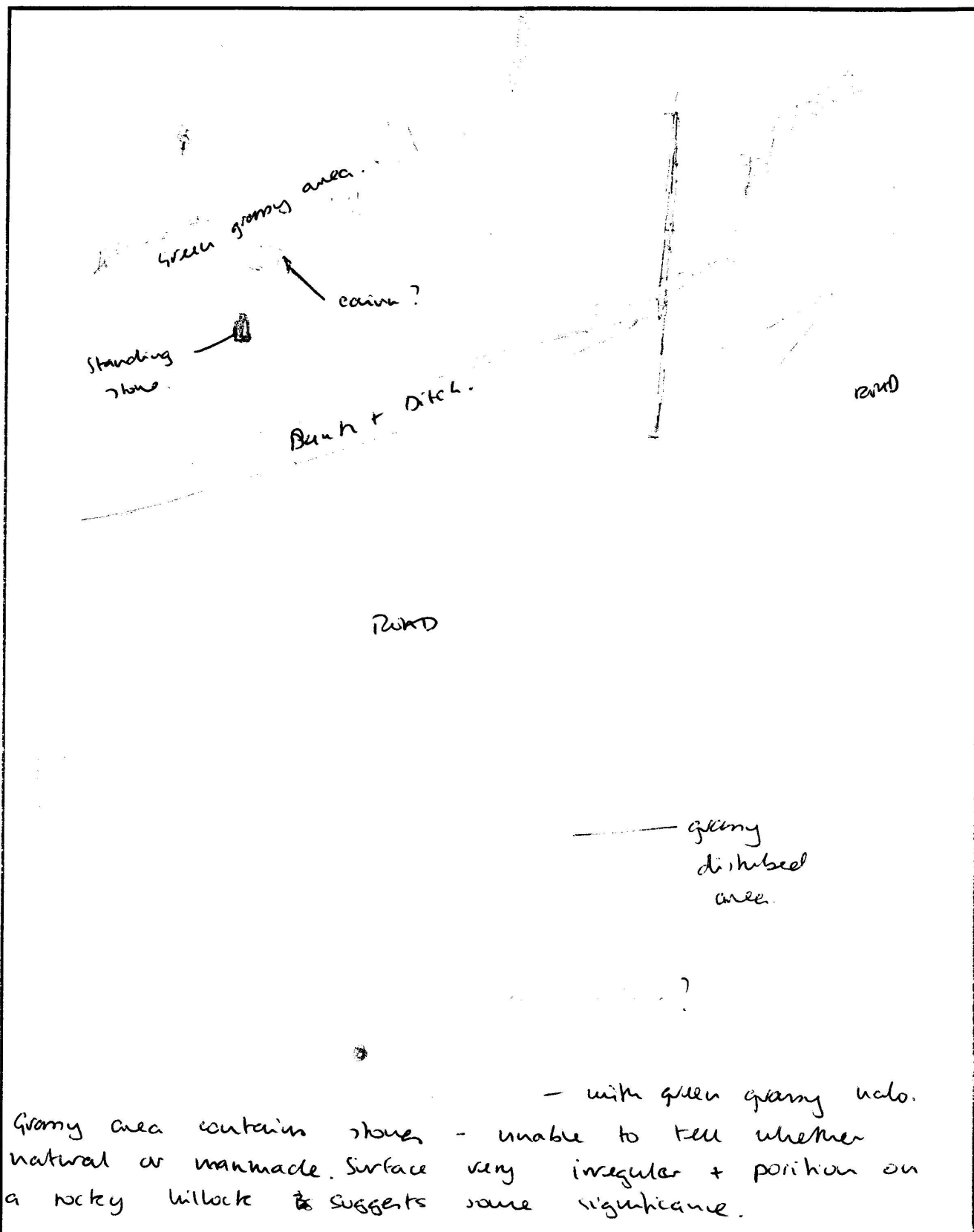


TABLE 1

CAMBRIAN MOUNTAINS ESA, HISTORIC MONITORING, BASELINE 1995

PRN

POTENTIALLY THREATENING FACTORS				
AGENT	PRESENT		ACTION	SIGNIFICANCE
ANIMALS	Y	N	Burrowing - badgers, foxes, rabbits	Damage/disturbance to underground artefacts
	Y	N	Overgrazing - cattle, horses, sheep	Loss of vegetation cover/soil
	Y	N	Poaching - cattle, horses, sheep	Damage to vegetation cover, leading to erosion
	Y	N	Rubbing point/erosion focus point - cattle, horses, sheep	As above, plus possible damage to upstanding features
HUMAN	Y	N	Demolition or removal of monument	Active removal of artefacts/monument
	Y	N	Rubbish dumping	Infilling/contamination
	Y	N	Trampling/poaching - on footpaths/desire lines	Loss of vegetation cover/soil damage resulting in erosion
	Y	N	Mountain bikes/Motorcross etc	As above
	Y	N	Deep ploughing/Drainage works/Building	Damage/disturbance of artefacts
	Y	N	Shallow cultivation/reseeds	As above
	Y	N	Tree/Scrub removal by uprooting	As above
	Y	N	Scrub burning in bonfires	Intense heat at point source, damage to artefacts and alteration of soil profile
VEGETATION	Y	N	Root damage - trees and scrub (especially where deep rooted - heavy crowns)	Damage/disturbance of artefacts
	Y	N	Tree windthrow	Potential massive damage/disturbance
	Y	N	Scrub encroachment - bracken, gorse, rhodedendron, thorn	Root or rhizome damage/disturbance (bracken least significant)
WEATHER/SITE FACTORS	Y	N	High rainfall/windspeeds - exposure	Greater erosion risk than level, non exposed site
	Y	N	High gradient	

Site nos. (3) & (4)

CAMBRIAN MOUNTAINS ESA HISTORIC MONITORING RESURVEY 1999

A

OS 1:10,000 SHEET: SN/SO/SH 78		GRID REF: SN/SO/SH 7524 8335	
PRN: 5625/5619 SITE NAME:			
AIR PHOTO No:		LANDSCAPE TYPE: Ia	
No GROUND PHOTOS: 6			
DATE RESURVEYED: 7/6/99		RESURVEYED BY: W. SOMERFIELD.	

IF CHANGES TO ANY OF THE FOLLOWING HAVE OCCURRED SINCE THE BASELINE, DETAIL THESE CHANGES IN THE APPROPRIATE SECTION OF THE RESURVEY PROFORMA.

A: CHANGES TO ACCESS?

B: CHANGES TO LANDCOVER

C: CHANGES TO LAND MANAGEMENT

D: CHANGES IN DESCRIPTION/CONDITION OF MONUMENT

E: CHANGES IN POTENTIALLY THREATENING FACTORS

F: CHANGE IN RATE OF DECAY

NO ✓	YES
NO ✓	YES
NO	YES ✓
NO ✓	YES
NO ✓	YES
NO ✓	YES

A: ACCESS

checked + QC'd

G. Atkinson 15/6/99

CAMBRIAN MOUNTAINS ESA HISTORIC MONITORING RESURVEY 1999

PRN

B:LANDCOVER

SITE:

HALO:

C:LAND MANAGEMENT

SITE: No significant change. Horses and sheep
were present, rather than cattle.

HALO:

D:DESCRIPTION/CONDITION OF MONUMENT

E: POTENTIALLY THREATENING FACTORS (see table 1)

F

RATE OF DECAY:

STABLE

SLOW

RAPID

CONTINUED?

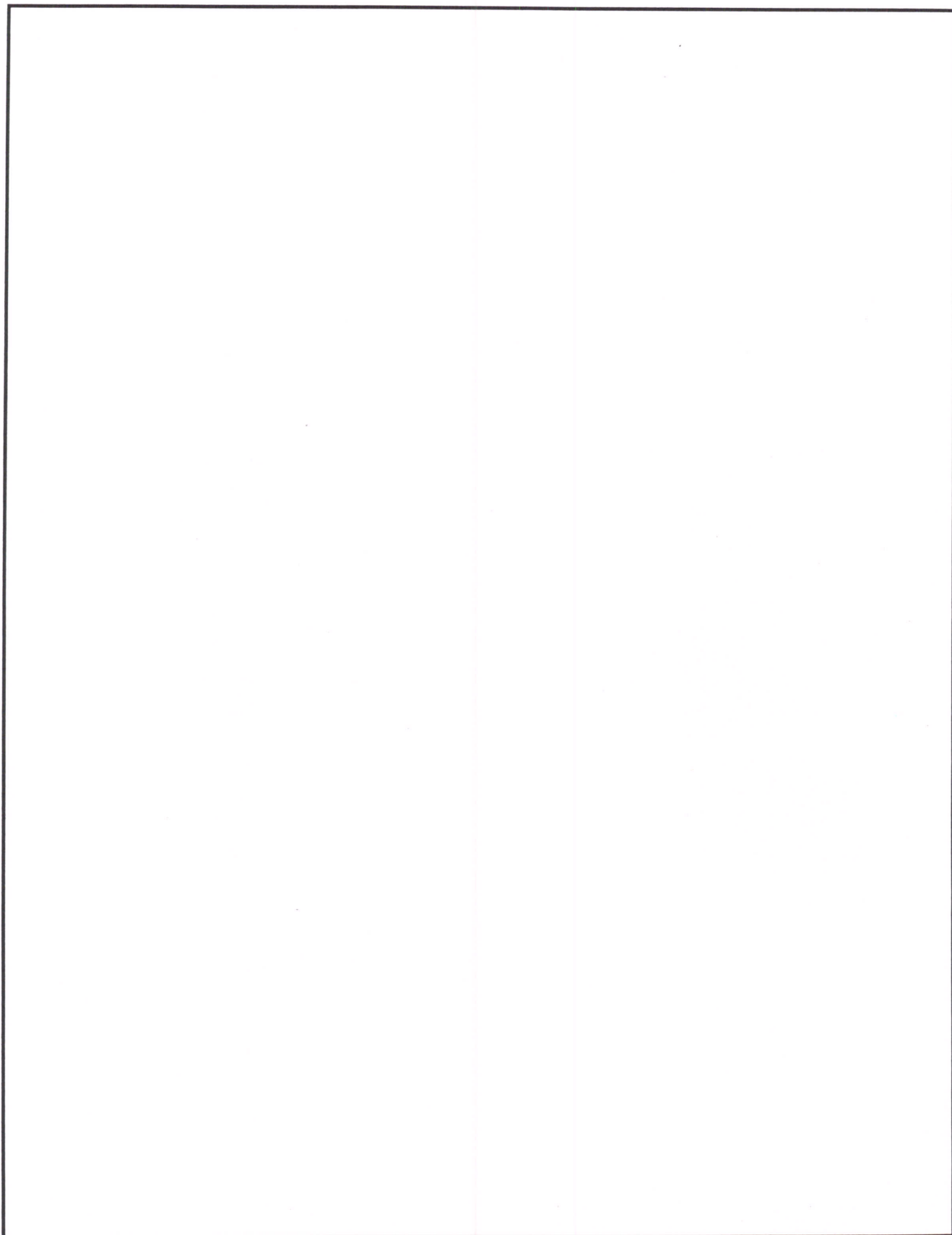
YES

NO

CAMBRIAN MOUNTAINS ESA, HISTORIC MONITORING RESURVEY 1999

SUPPLEMENTARY NOTES TO FIELD SURVEYS

PAGE..... OF.... PRN:



POTENTIALLY THREATENING FACTORS				
AGENT	PRESENT		ACTION	SIGNIFICANCE
ANIMALS	Y	N	Burrowing - badgers, foxes, rabbits	Damage/disturbance to underground artefacts
	Y	N	Overgrazing - cattle, horses, sheep	Loss of vegetation cover/soil
	Y	N	Poaching - cattle, horses, sheep	Damage to vegetation cover, leading to erosion
	Y	N	Rubbing point/erosion focus point - cattle, horses, sheep	As above, plus possible damage to upstanding features
HUMAN	Y	N	Demolition or removal of monument	Active removal of artefacts/monument
	Y	N	Rubbish dumping	Infilling/contamination
	Y	N	Trampling/poaching - on footpaths/desire lines	Loss of vegetation cover/soil damage resulting in erosion
	Y	N	Mountain bikes/Motorcross etc	As above
	Y	N	Deep ploughing/Drainage works/Building	Damage/disturbance of artefacts
	Y	N	Shallow cultivation/reseeds	As above
	Y	N	Tree/Scrub removal by uprooting	As above
	Y	N	Scrub burning in bonfires	Intense heat at point source, damage to artefacts and alteration of soil profile
VEGETATION	Y	N	Root damage - trees and scrub (especially where deep rooted - heavy crowns)	Damage/disturbance of artefacts
	Y	N	Tree windthrow	Potential massive damage/disturbance
	Y	N	Scrub encroachment - bracken, gorse, rhodedendron, thorn	Root or rhizome damage/disturbance (bracken least significant)
WEATHER/SITE FACTORS	Y	N	High rainfall/windspeeds - exposure	Greater erosion risk than level, non exposed site
	Y	N	High gradient	