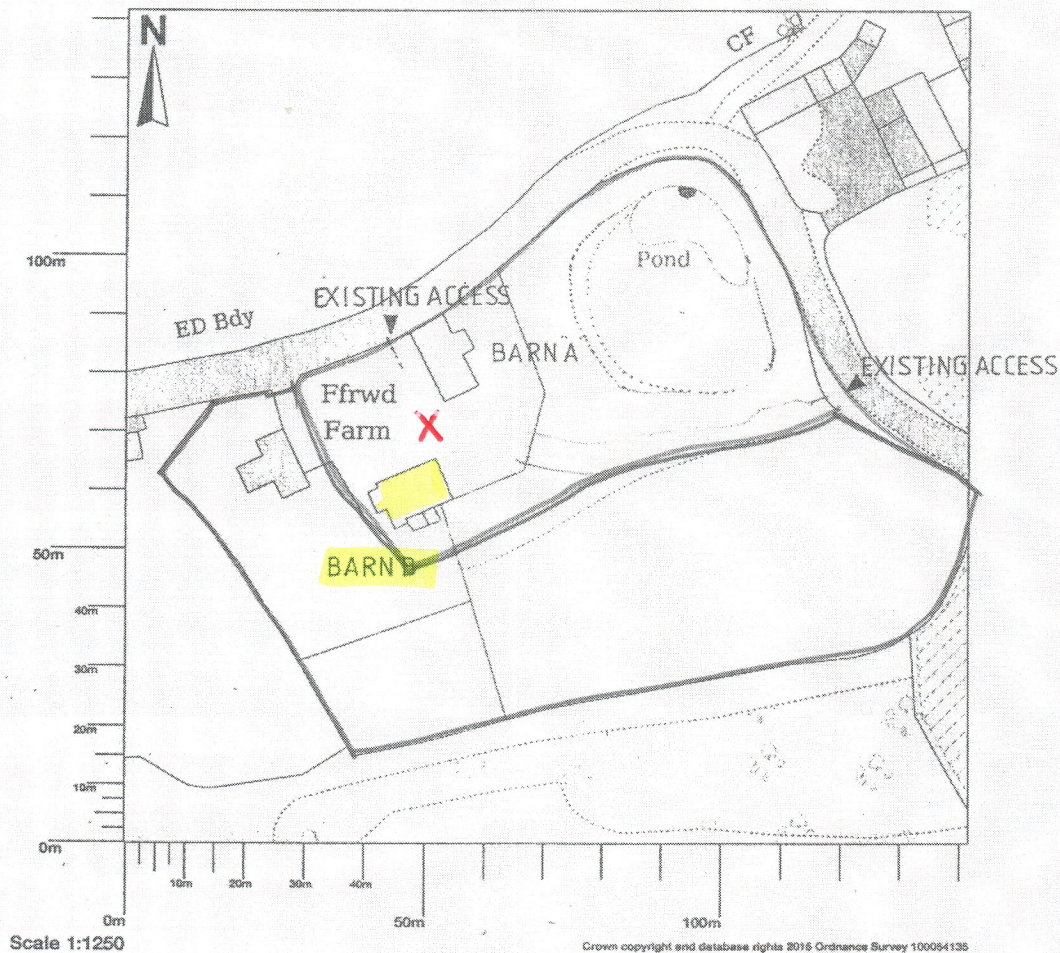


BARN B PHOTOGRAPHS

Ffrwd Farm, Ffrwd, Cefn-Y-Bedd, Wrexham, LL12 9TG



X = SJ 301 547

Map shows area bounded by: 330075.28,354647.28,330216.72,354788.72 (at a scale of 1:1250) The representation of a road, track or path is no evidence of a right of way. The representation of features as lines is no evidence of a property boundary.

Produced on 17 May 2016 from the Ordnance Survey National Geographic Database and incorporating surveyed revision available at this date. Reproduction in whole or part is prohibited without the prior permission of Ordnance Survey. © Crown copyright 2016. Supplied by UKPlanningMaps.com a licensed Ordnance Survey partner (100054135). Unique plan reference: p2b/93087/128970

Ordnance Survey and the OS Symbol are registered trademarks of Ordnance Survey, the national mapping agency of Great Britain. UKPlanningMaps logo and other designs are Copyright © copla ltd 2016

**PROPOSED CONVERSION OF TWO FORMER
AGRICULTURAL BUILDINGS
INTO TWO DWELLINGS AT
FFRWD FARM,
CEFN Y BEDD,
WREXHAM
FOR
MR M. JONES**

Project ref 1210.73

Date: September, 2016.

Scales:

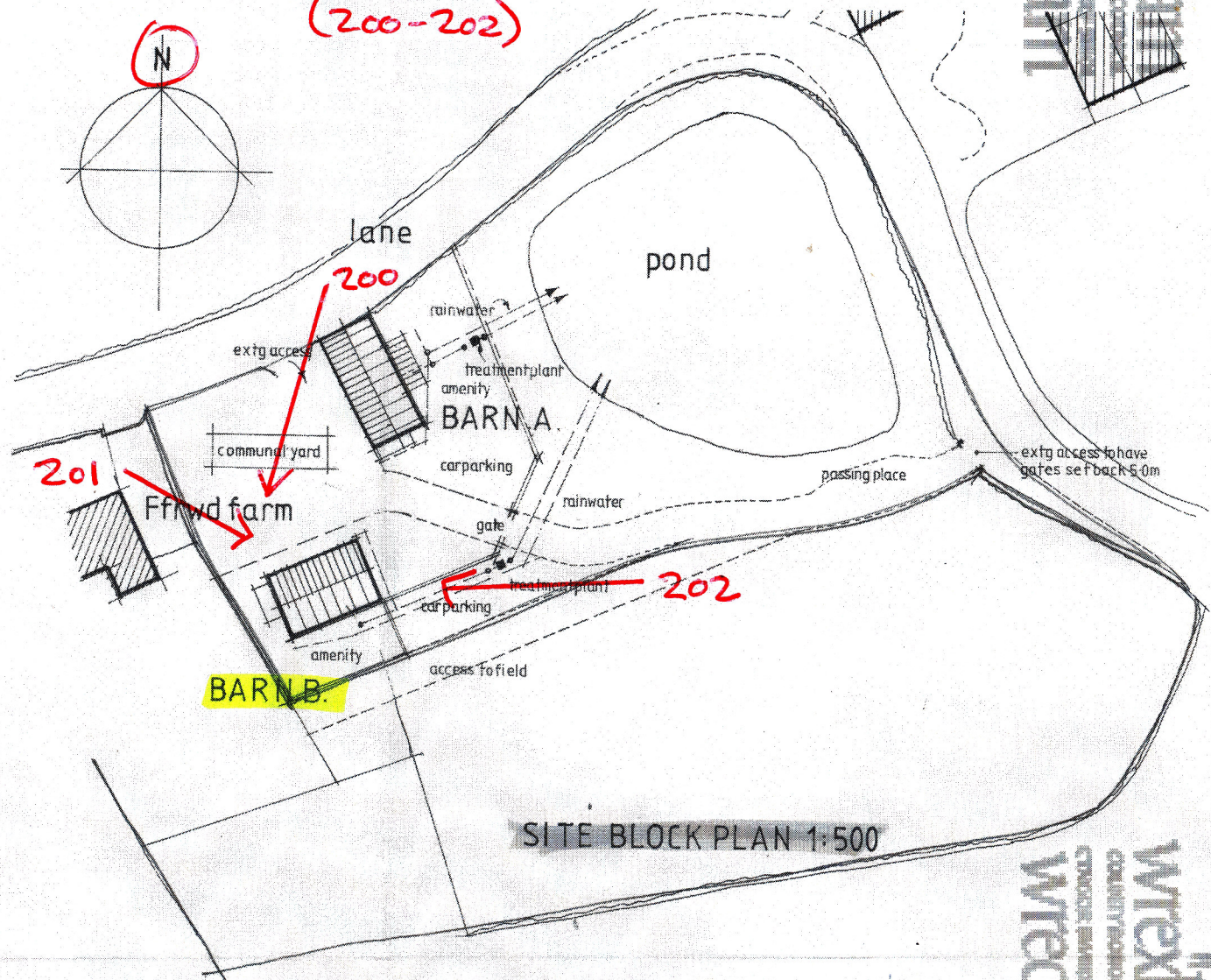
- 1:50 Floor layout plans
- 1:100 Elevations.
- 1:500 Site block plan.
- 1:1250 Site location plan.

Agent

Paul Whale Studio 83
Architecture and Design,
The Fort Offices,
Artillery Business Park,
Oswestry,
Shropshire,
SY11 4AD
Telephone 01691 664239.
Email paulwhale@studio83.co.uk

BARN B
SETTING
(200-202)

P /2016/ 0993



SITE BLOCK PLAN 1:500

BI

Wrexham
WREXHAM COUNTY COUNCIL
27 OCT 2016
PLANNING DEPARTMENT

BARN B - EXTERIOR

NORTH AND WEST ELEVATIONS (210-219 and 234-237)



212 217 218 213/214

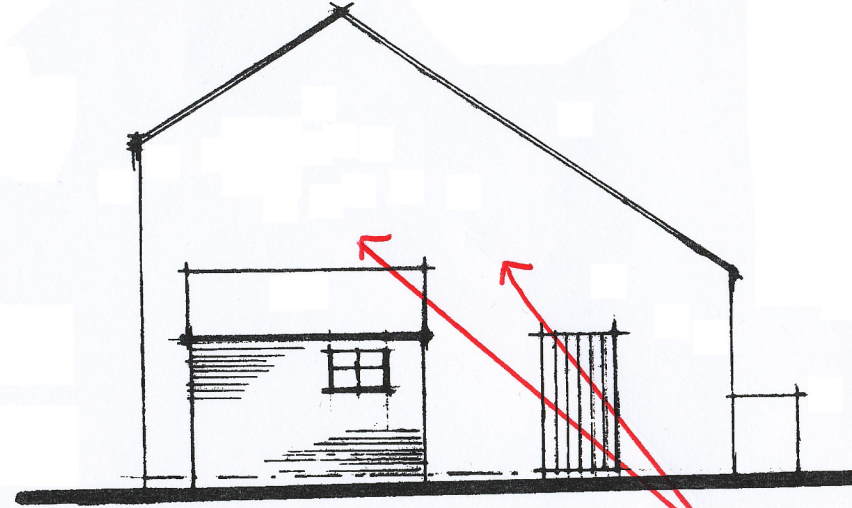
FRONT ELEVATION

(NORTH)

216

210/211

215



235/236

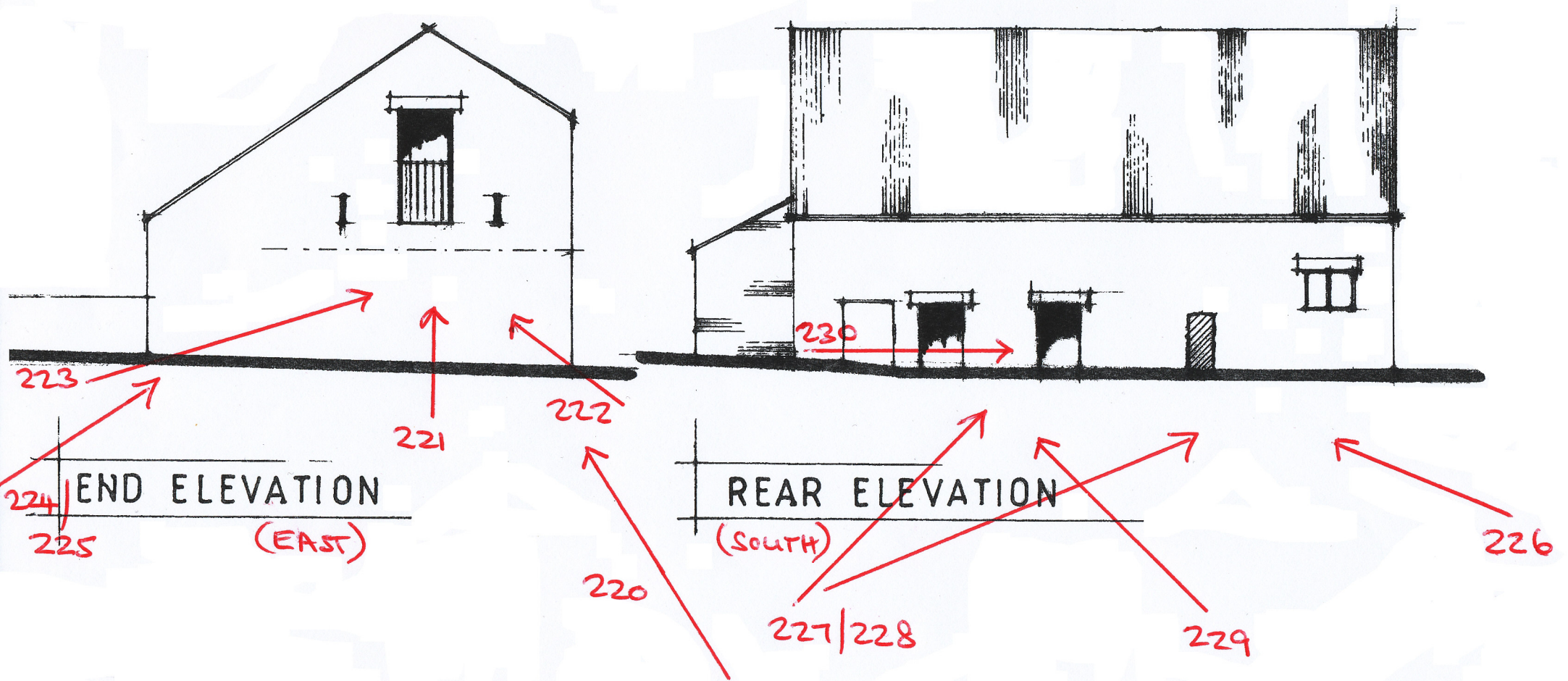
END ELEVATION

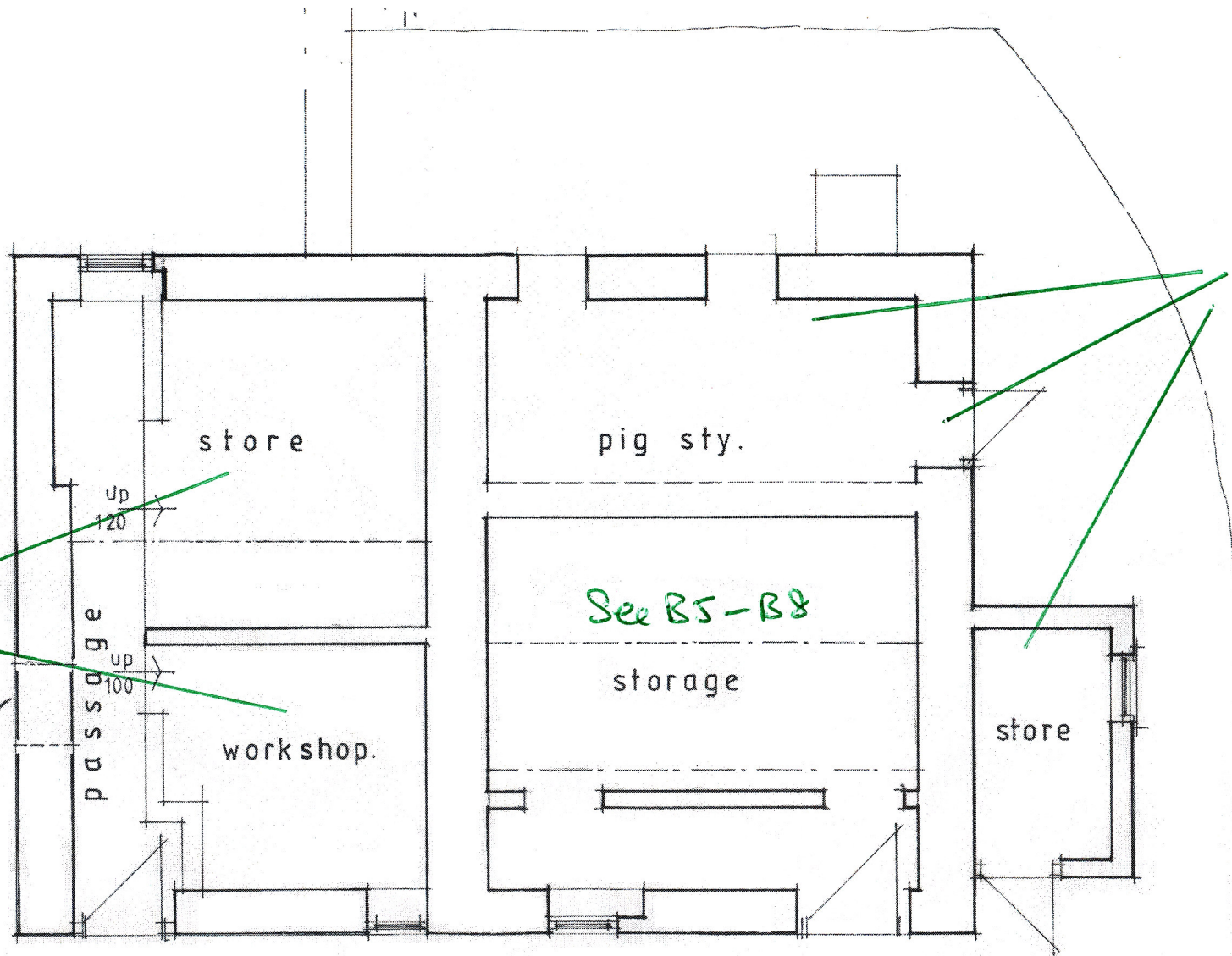
(WEST)

237

234

BARN B - EXTERIOR
EAST AND SOUTH ELEVATIONS
(220-225 and 226-230)





See B9-B13
and
B14-B17
for
loft area

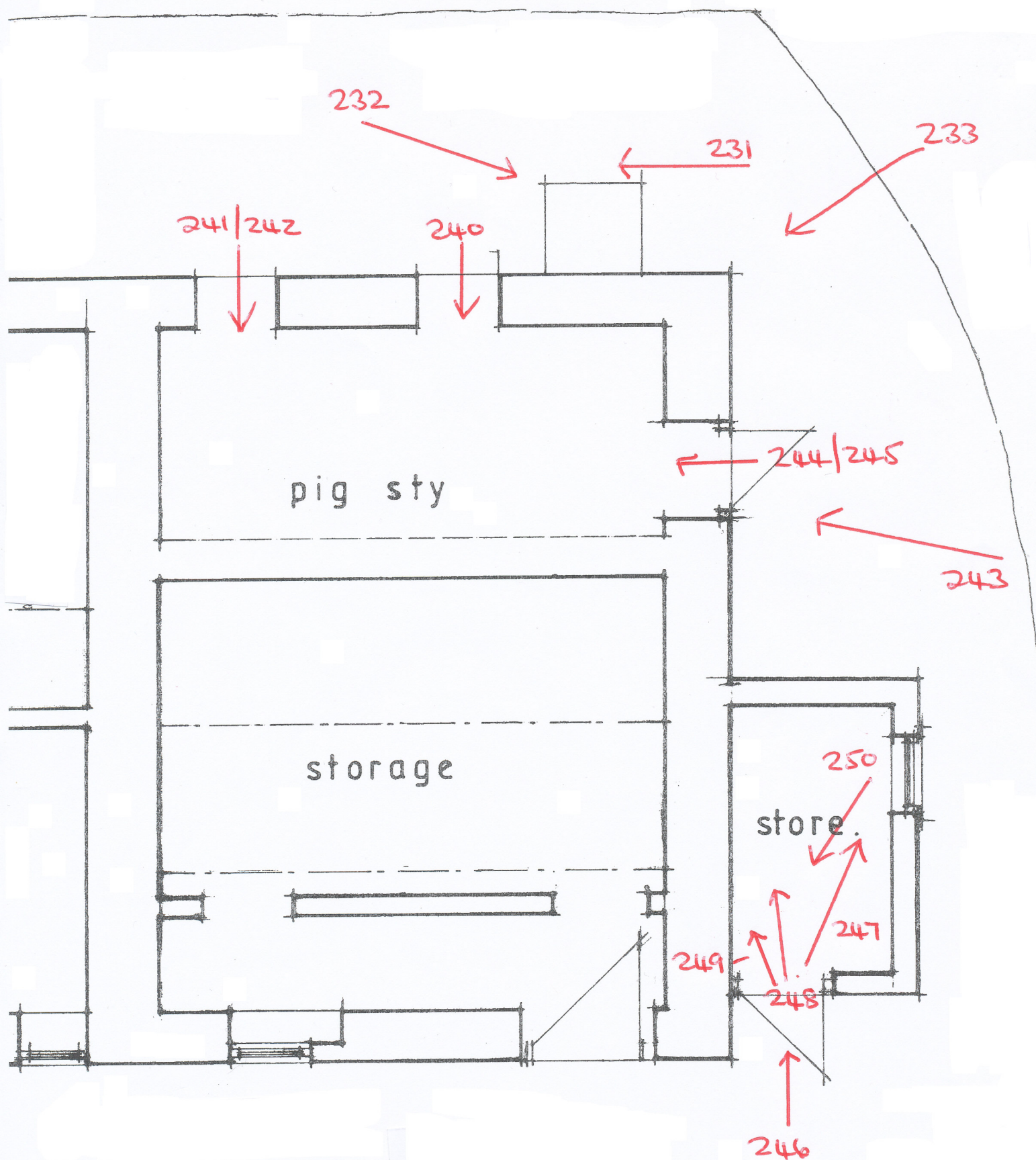
high level
access to loft

See B5-B8

See
B4

Existing

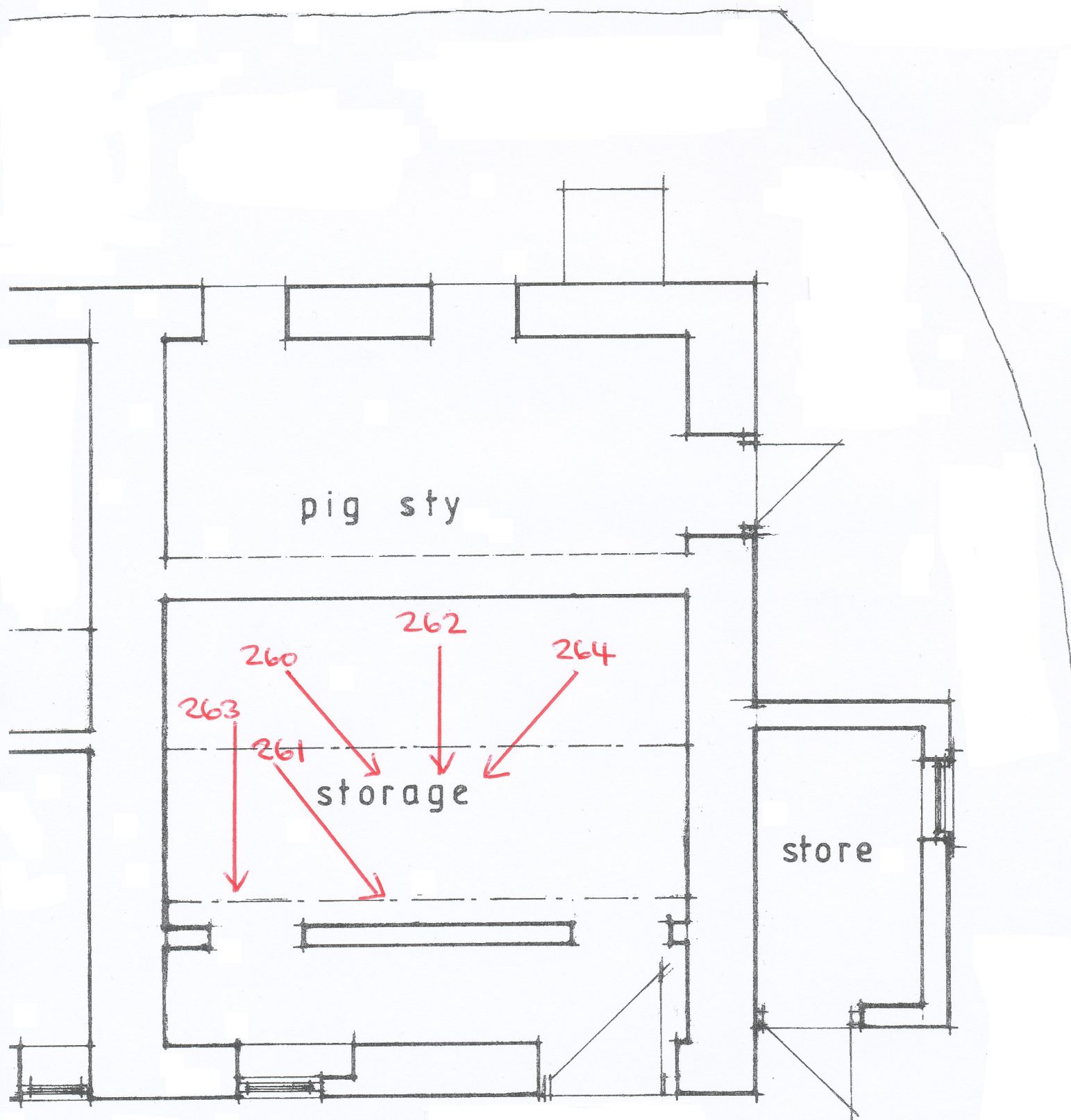
GROUND FLOOR PLAN
(loft over workshop/store)



BARN B - EXTERIOR
STIES AND STORES
 (231-233 and 240-250)

(2)

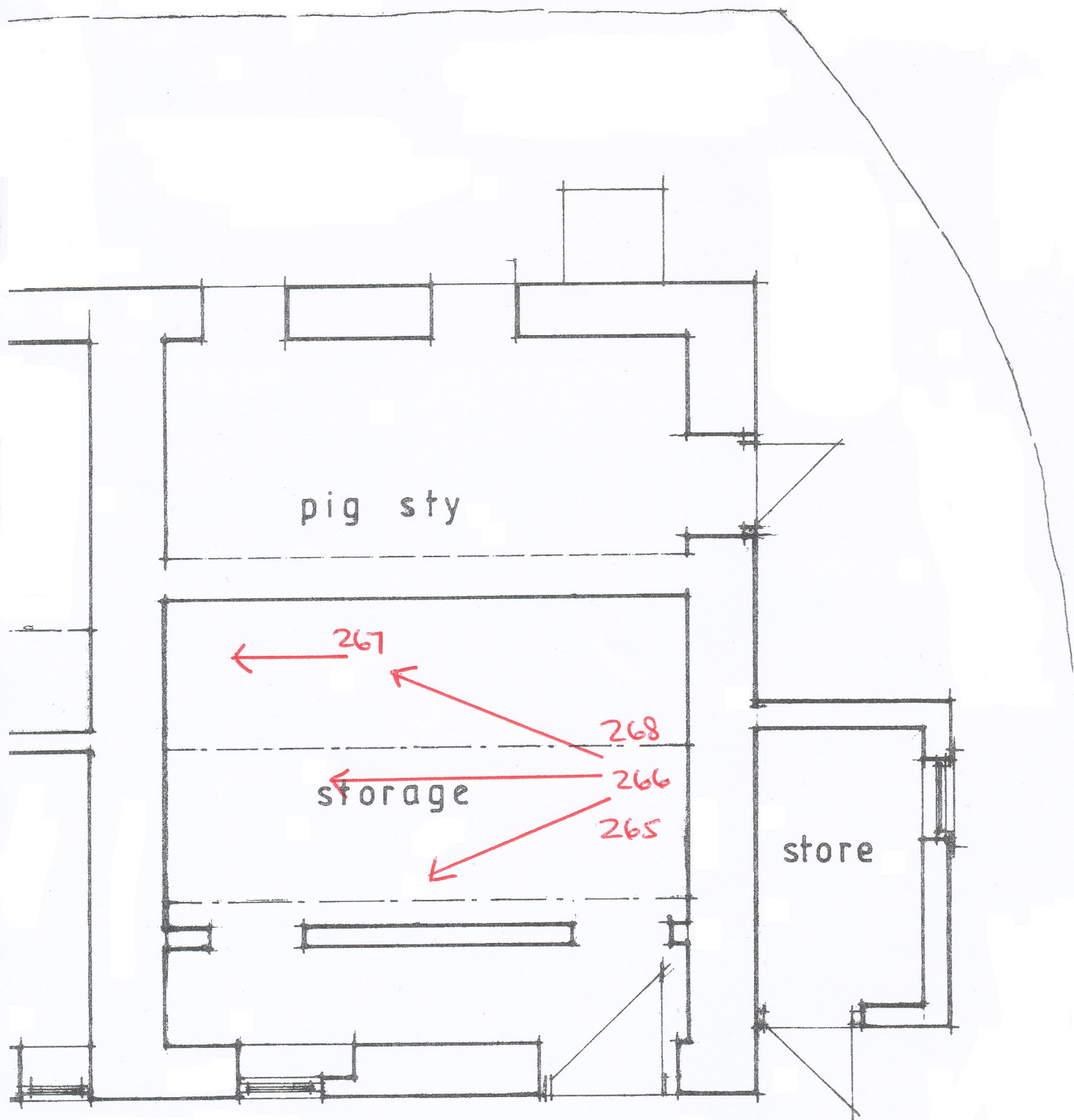
B4



BARN B
WESTERN END - INTERIOR
NW | NORTH | NE
(260 - 264)

(N)

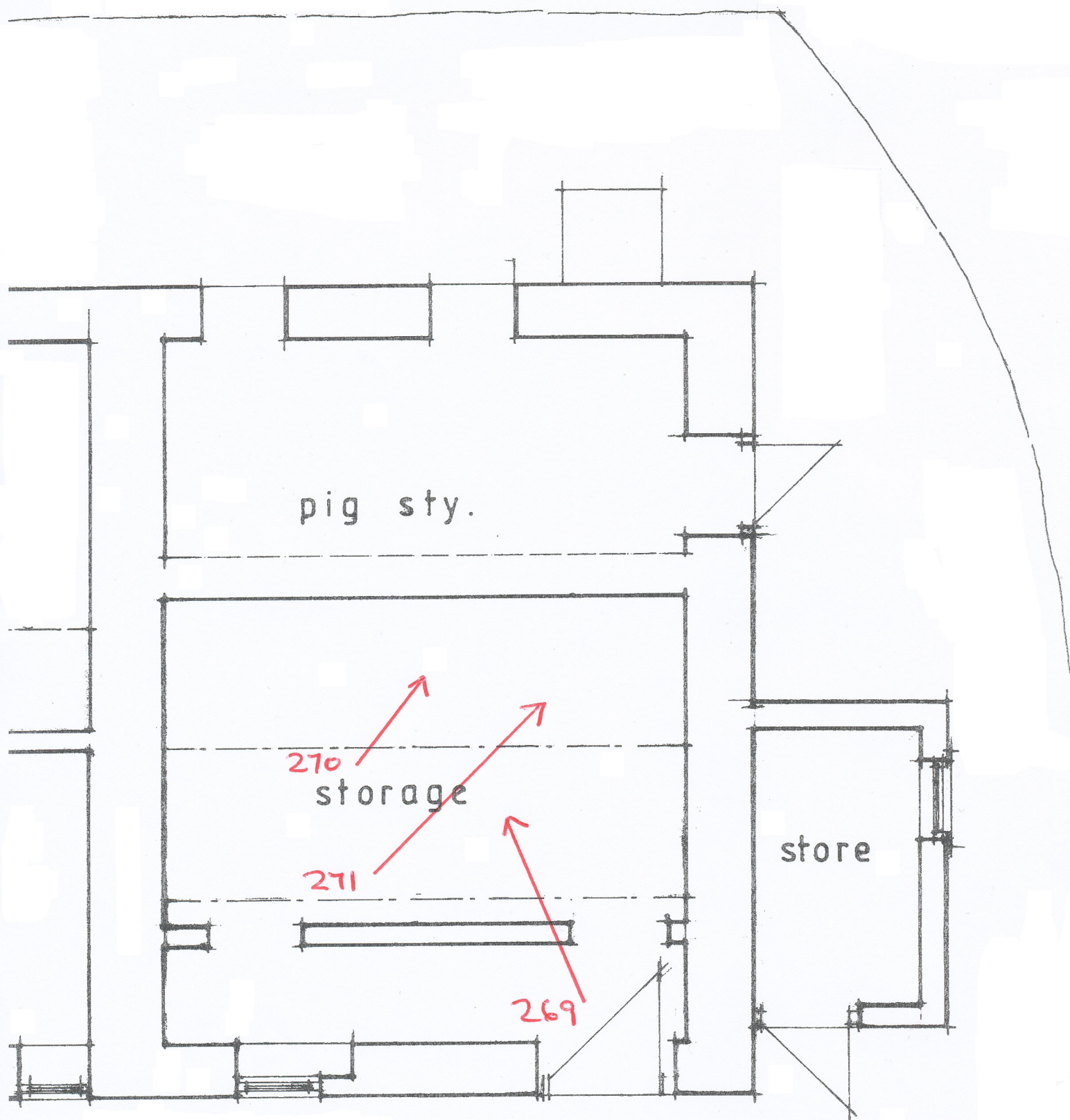
BS



BARN B
WESTERN END - INTERIOR
NE/EAST/SE
(265 - 268)

(N)

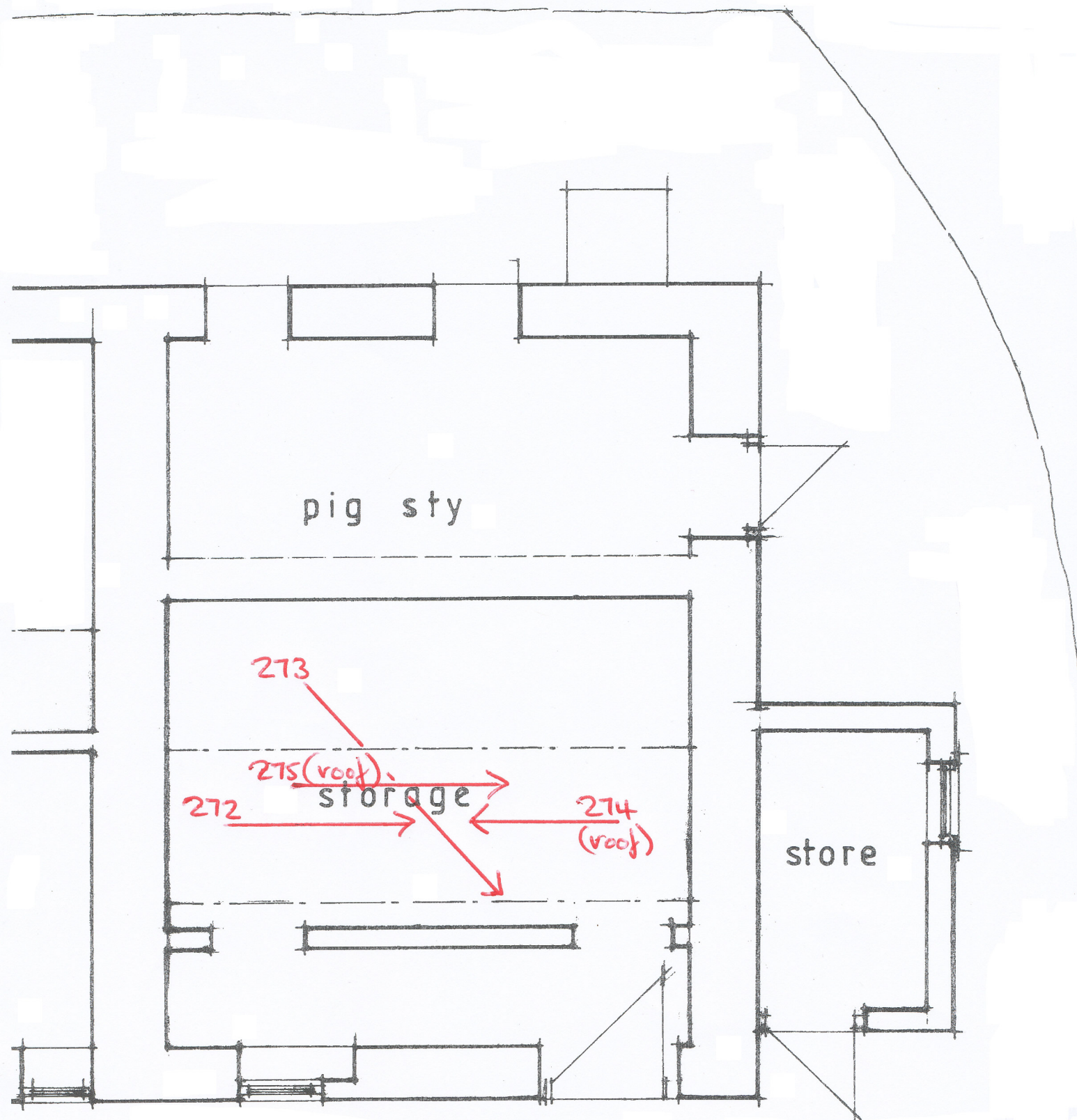
B6



BARN B
WESTERN END - INTERIOR
SE / SOUTH / SW
(269 - 271)

(N)

B7



BARN B

WESTERN END - INTERIOR

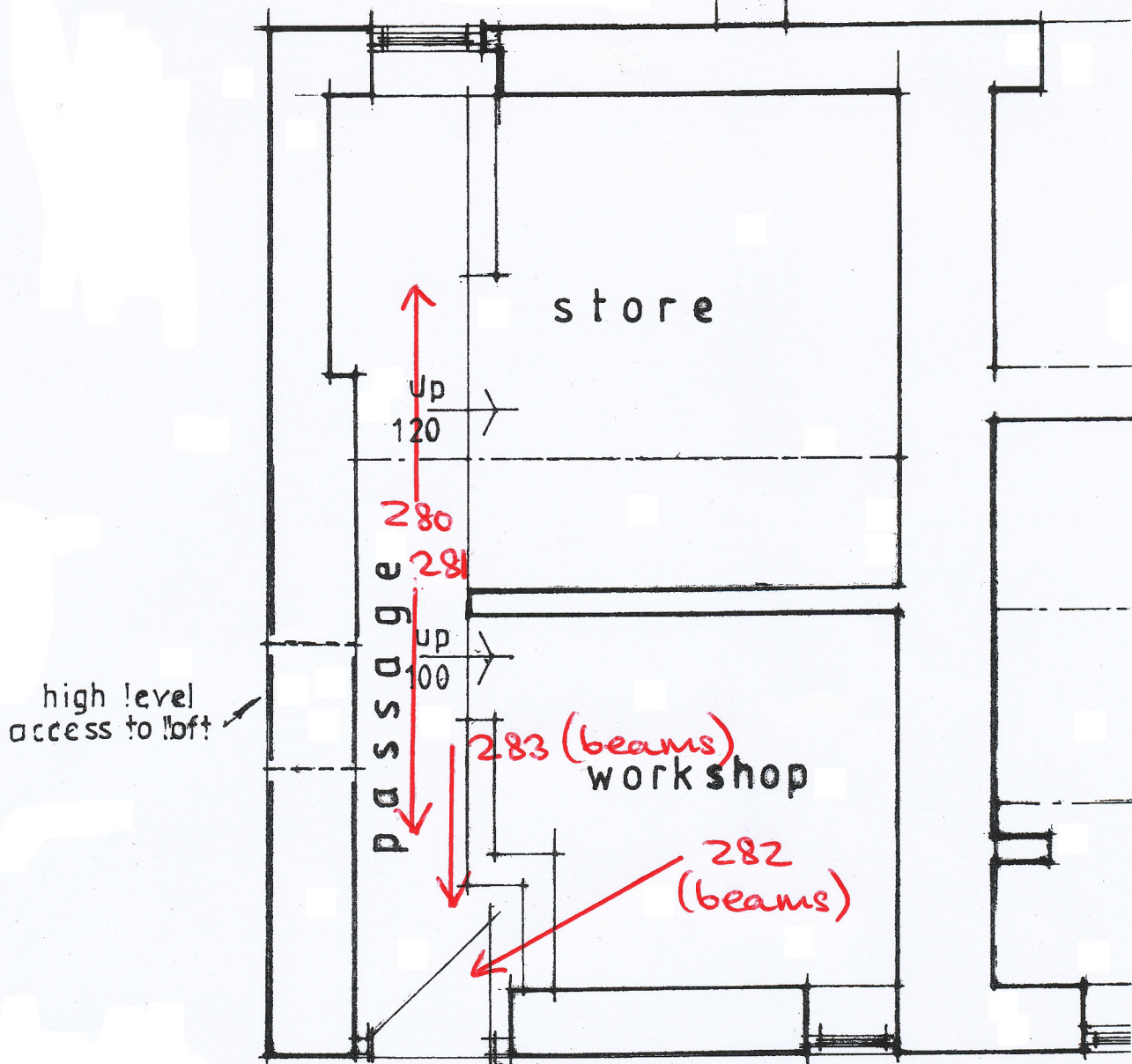
WEST/NW + ROOF

(272-275)

(N)

B8

BARN B
EASTERN END - INTERIOR
PASSAGEWAY
(280-283)



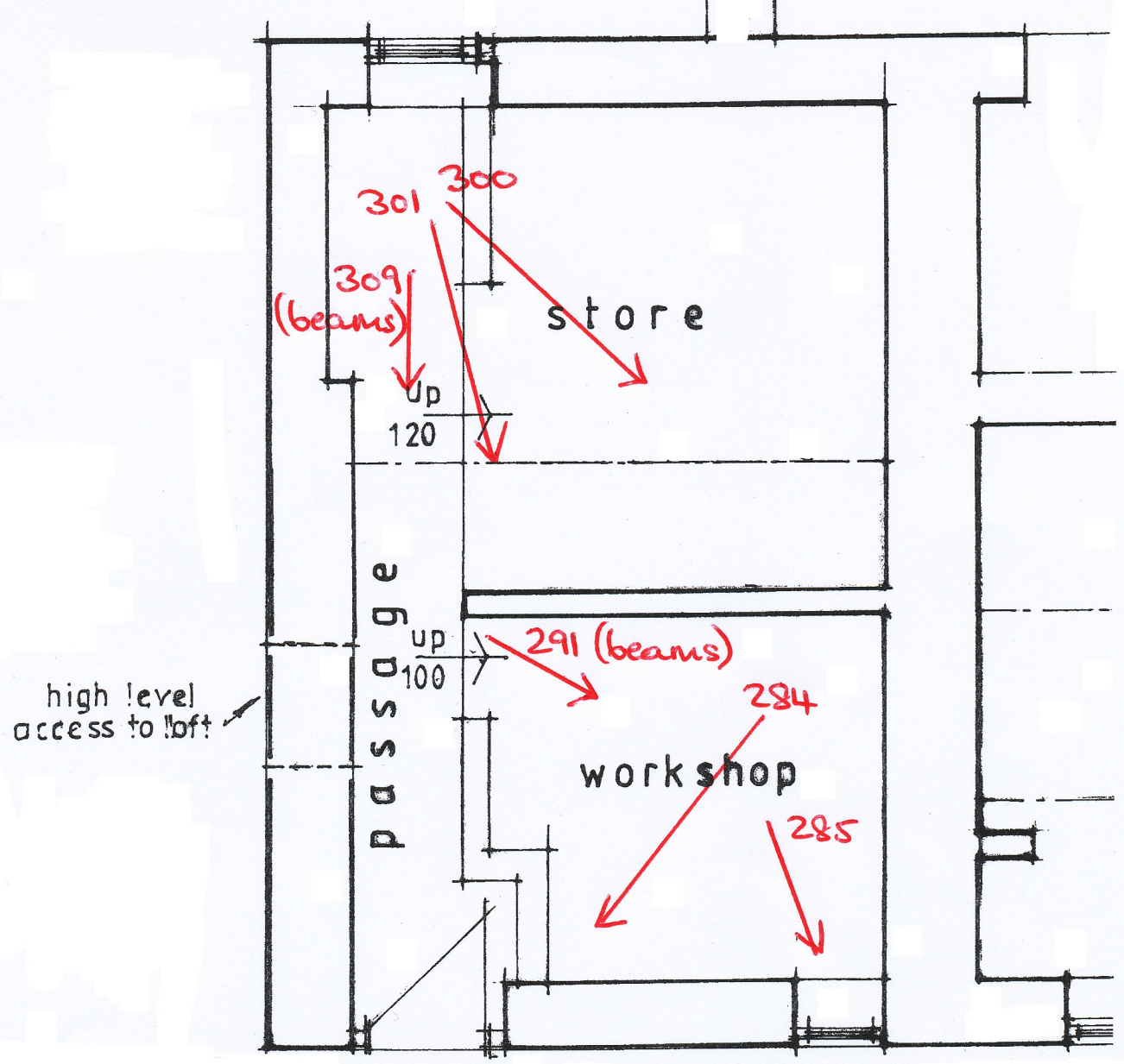
GROUND FLOOR PLAN
(loft over workshop/store)

BARN B

EASTERN END - INTERIOR

NORTH WALLS OF

- FRONT WORKSHOP (284/285 + 291)
- REAR STORE (300/301 + 309)



GROUND FLOOR PLAN
(loft over workshop/store)

N

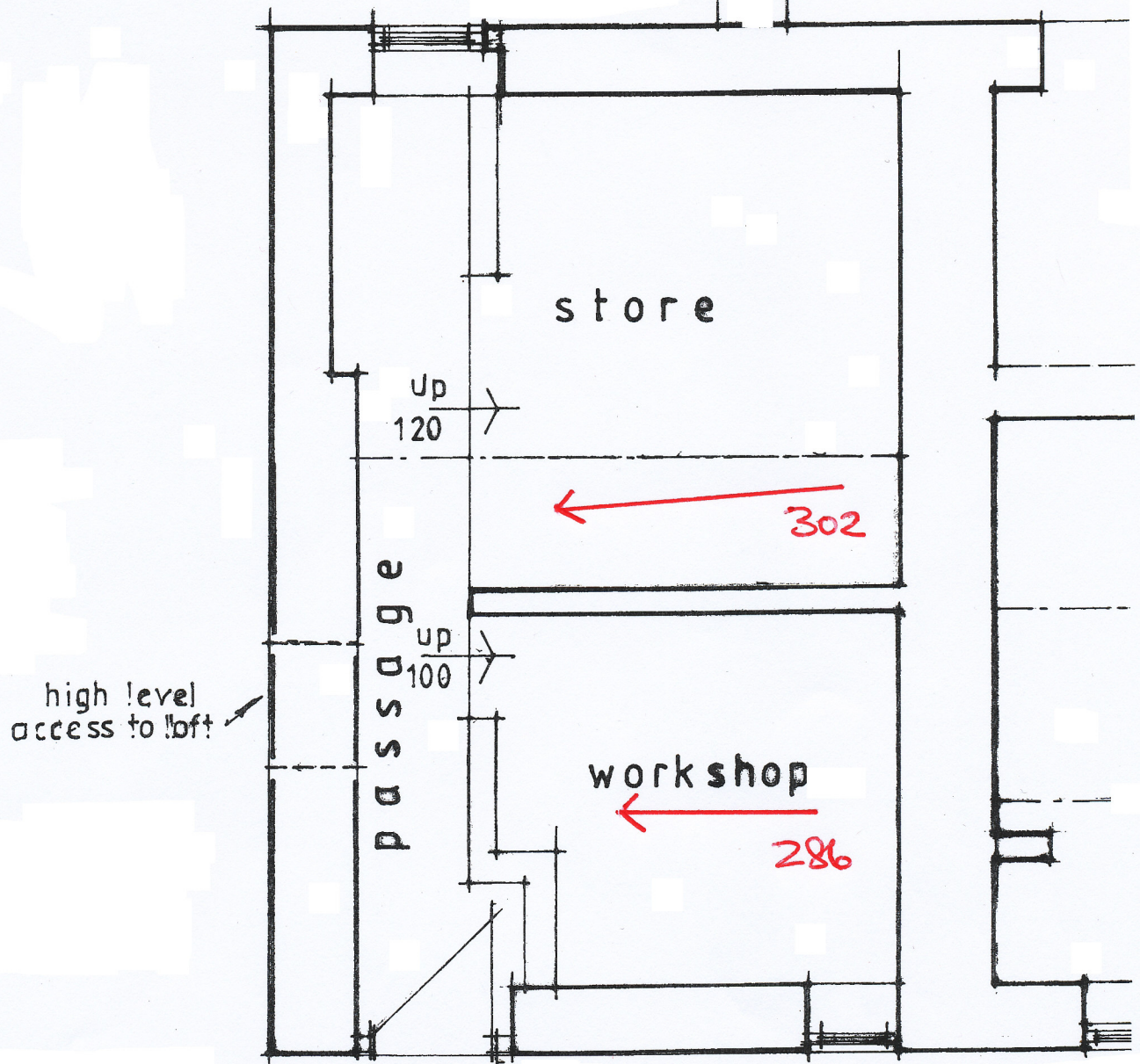
B10

BARN B

EASTERN END - INTERIOR

EAST WALL OF

- FRONT WORKSHOP (286)
- REAR STORE (302)



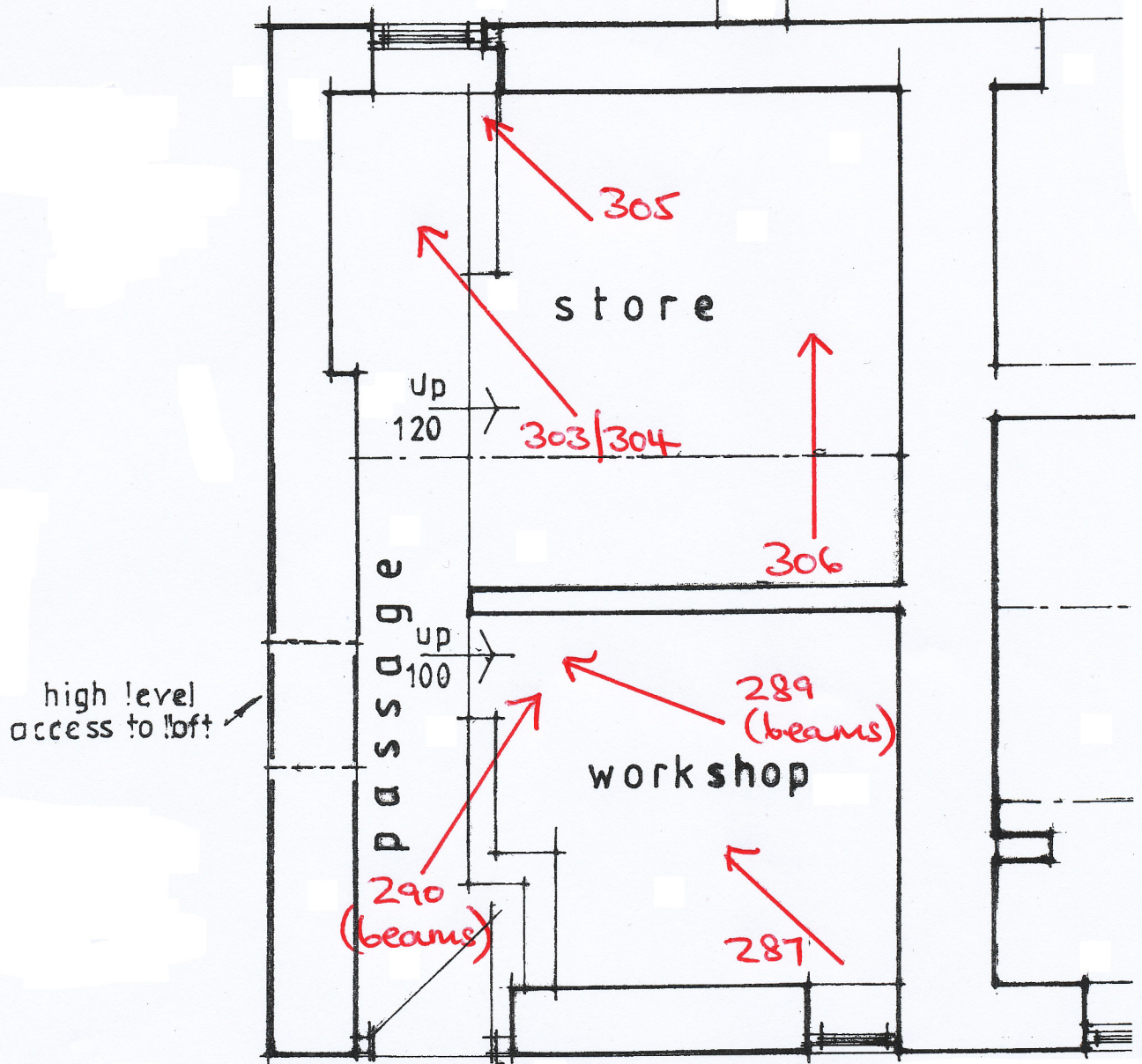
GROUND FLOOR PLAN
(loft over workshop/store)

BARN B

EASTERN END - INTERIOR

SE / SOUTH WALL

- FRONT WORKSHOP (287 + 289/290)
- REAR STORE (303 - 306)



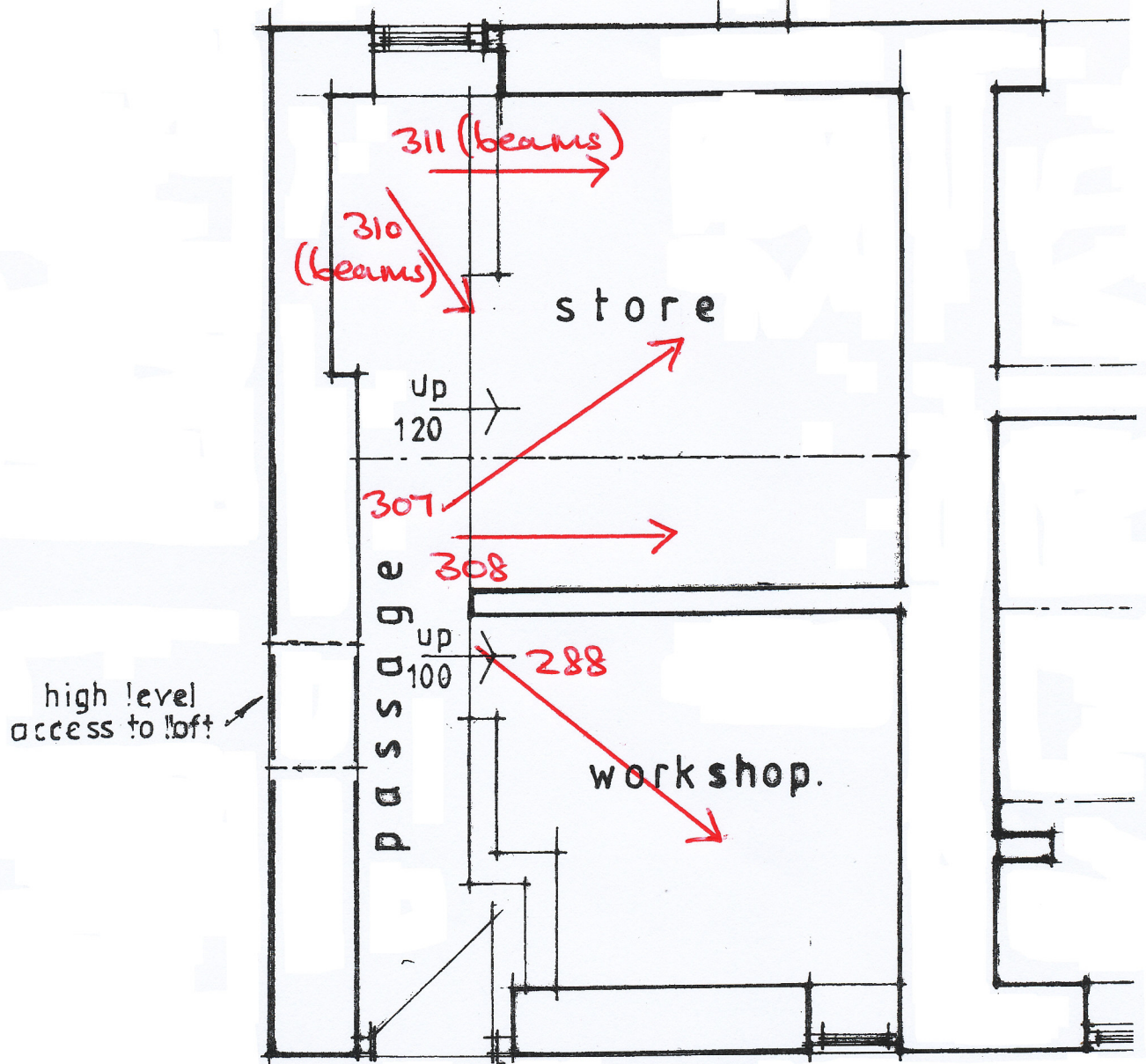
GROUND FLOOR PLAN
(loft over workshop/store)

BARN B

EASTERN END — INTERIOR

SW / WEST WALL

- FRONT WORKSHOP (288)
- REAR STORE (307/308 + 310/311)



GROUND FLOOR PLAN
(loft over workshop/store)

N

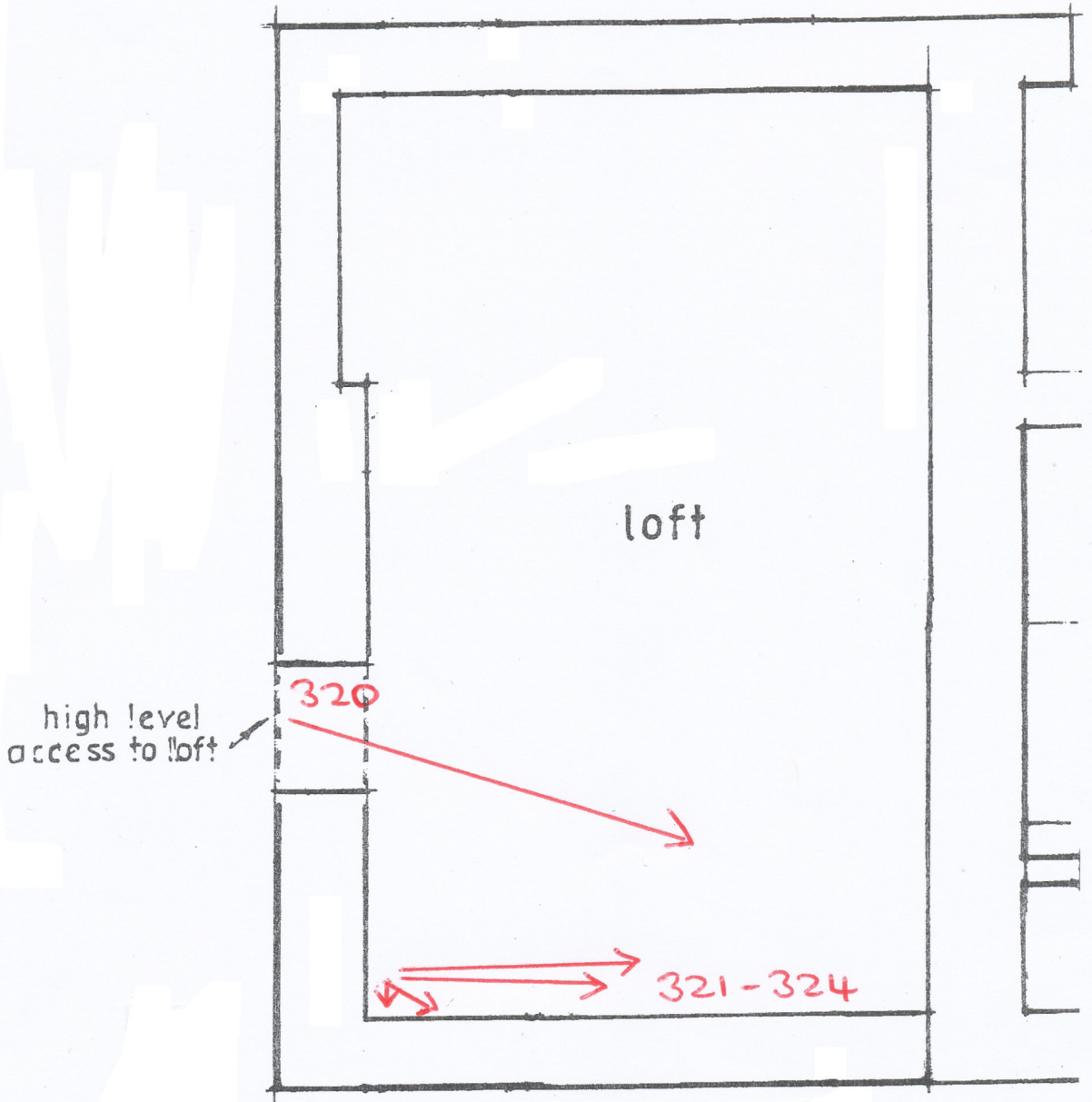
B13

BARN B

EASTERN END - INTERIOR

LOFT AREA - Limited access

NORTH (320-324)



FIRST FLOOR — BARN 'B'
(loft over workshop/store)

(N)

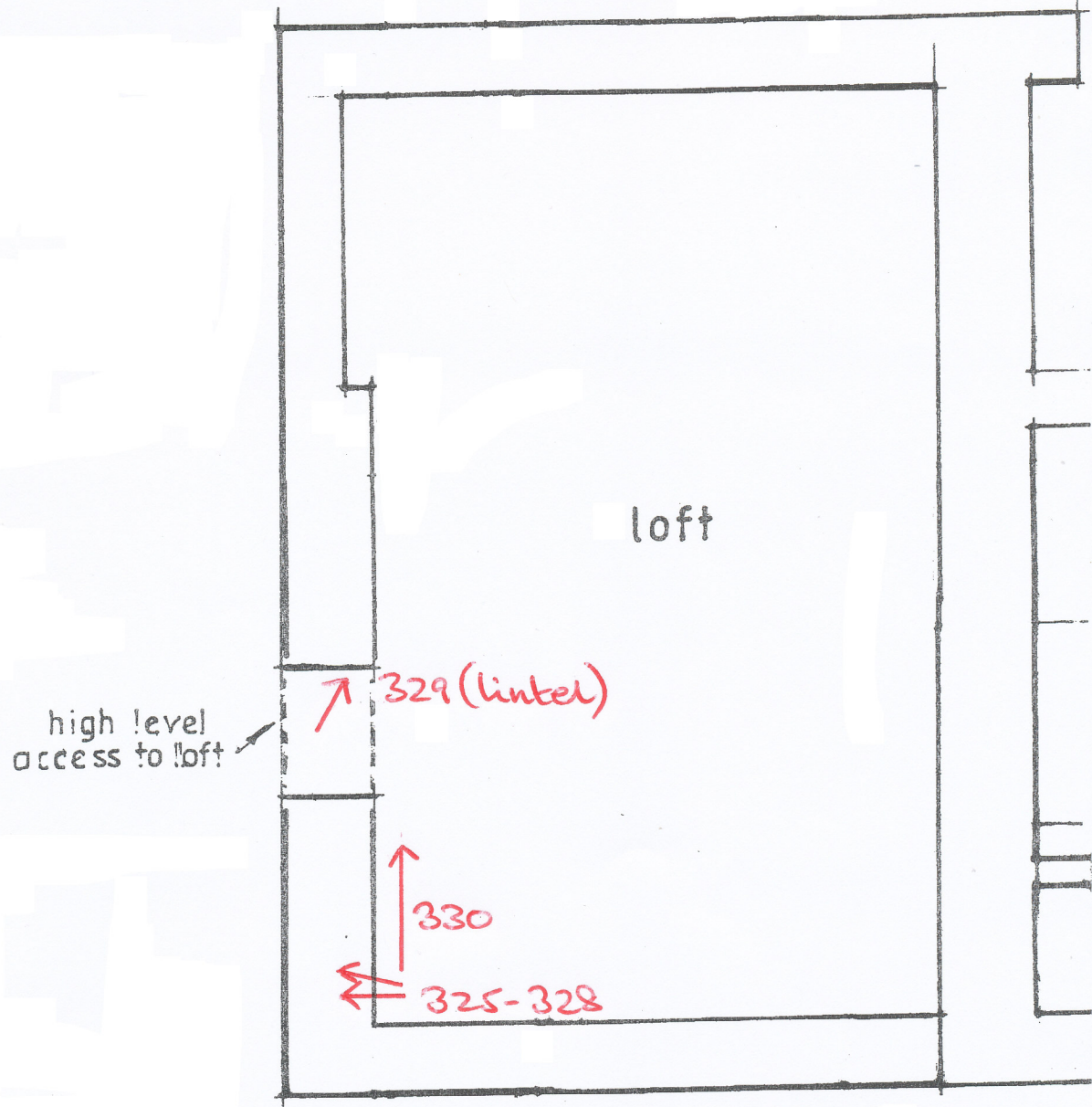
B14

BARN B

EASTERN END - INTERIOR

LOFT AREA - limited access

EAST (325-330)



FIRST FLOOR — BARN 'B'
(loft over workshop/store)

N

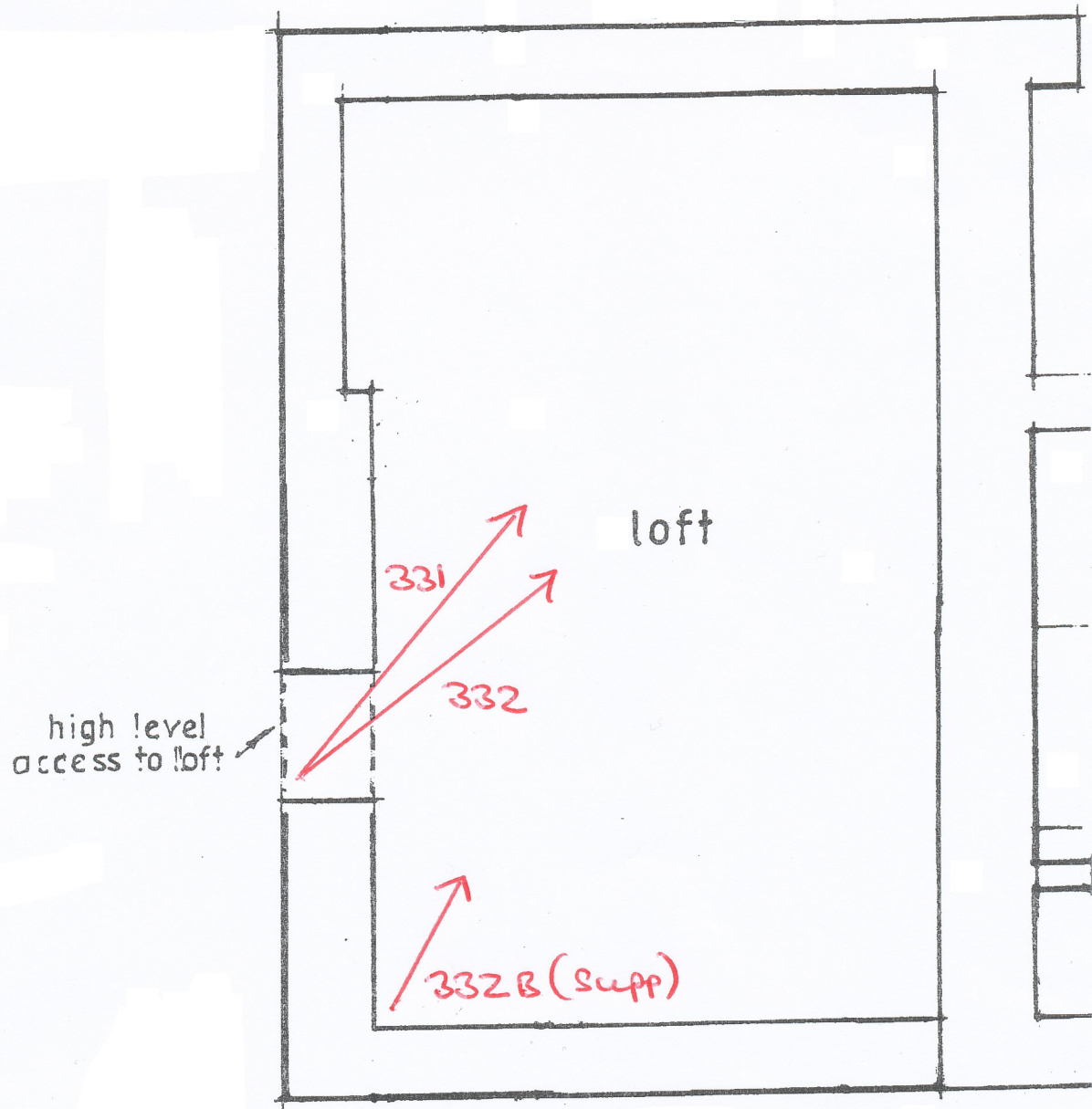
B15

BARN B

EASTERN END - INTERIOR

LOFT AREA - limited access

SOUTH/SW (331/332)



FIRST FLOOR — BARN 'B'
(loft over workshop/store)

N

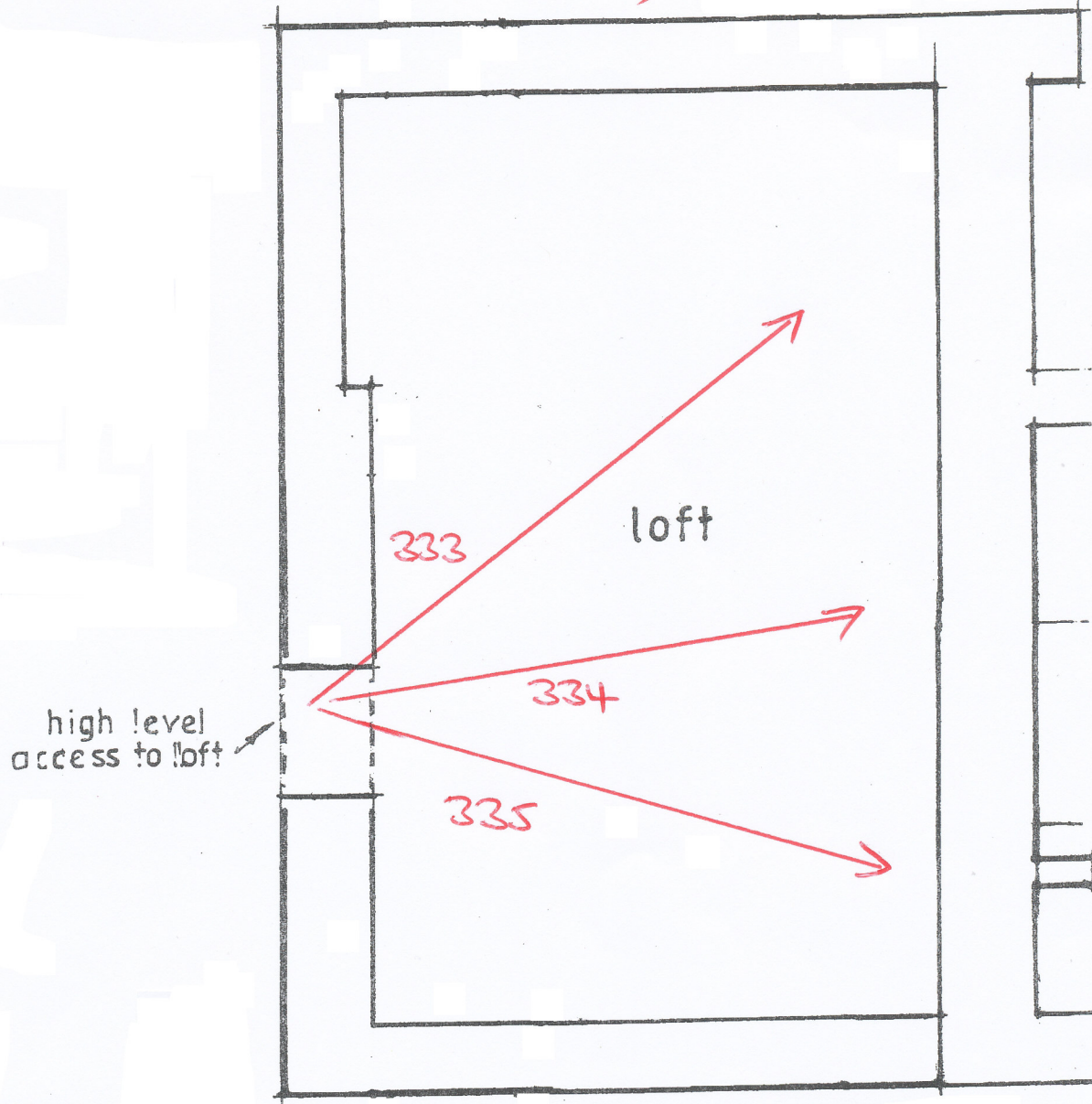
B16

BARN B

EASTERN END — INTERIOR

LOFT AREA — limited access

SW / WEST / NW (333-335)



FIRST FLOOR — BARN 'B'
(loft over workshop/store)

(N)

B17